

**SUN RISE MITALI ENTERPRISES**

**WELCOMES YOU**



**SUN RISE MITALI ENTERPRISES**

## **COMPANY PROFILE**

- **SUN RISE MITALI ENTERPRISES** IS AN ONE STOP SHOP OF ALL SPARE PARTS SOLUTION ALONG WITH DIFFERENT IMPLEMENTS AND EQUIPMENTS.
  
- **SRM** IS ONE OF THE PIONEERS IN THE PARTS INDUSTRY FOR OVER MANY PAST YEARS.
  - ❖ TRACTOR SPARE PARTS
  - ❖ AGRICULTURE IMPLEMENTS/PARTS
  - ❖ DIESEL ENGINE, WATER PUMPS, ELECTRIC MOTORS
  - ❖ AUTOMOTIVE TYRES
  - ❖ BICYCLES PARTS
  - ❖ MOTORCYCLES, SCOOTER, THREE WHEELER PARTS
  - ❖ CAR, TRUCK, GENERATORS SPARE PARTS
  - ❖ BATTERIES



**SUN RISE MITALI ENTERPRISES**

## **MISSION**

**SUN RISE MITALI ENTERPRISES MAIN AIMS / FOCUS IS COMMITTED ONLY TO SUPPLY ALL KIND OF BEST QUALITY PRODUCTS, SYSTEMS AND SERVICES IN THE FIELD OF SPARE PARTS FOR FARM EQUIPMENT INDUSTRY AND ACCOMPLISHING TOTAL CUSTOMER SATISFACTION.**

**RAGHU KANOJIA**  
*(DIRECTOR)*





**SUN RISE MITALI ENTERPRISES**

# OVERSEAS CUSTOMER BASE

**WE EXPORT TO MORE THAN 50 COUNTRIES**



SUN RISE MITALI ENTERPRISES



- MEXICO
- HONDURAS
- COSTA RICA
- GUATEMALA
- POLAND
- SOUTH AFRICA
- AFRICA
- BRAZIL
- AUSTRALIA
- IRAN
- EGYPT



**SUN RISE MITALI ENTERPRISES**

## **OUR BRANDS**

**WE SUPPLY OUR PRODUCTS IN BELOW BRANDS**

**TRACTOR  
SPARE PARTS :**

**SRM**

**AGRICULTURE  
IMPLEMENTS  
AND PARTS :**

**LIBRA**



**SUN RISE MITALI ENTERPRISES**

## **PRODUCT RANGE**

- 1) TRACTOR PARTS**
- 2) AGRICULTURAL IMPLEMENT PARTS**
- 3) AGRICULTURE IMPLEMENTS**
- 4) MISCELLANEOUS PRODUCTS**





# SUN RISE MITALI ENTERPRISES

WE HAVE A RANGE OF MORE THAN 8000 PARTS SUITABLE FOR:



**MASSEY FERGUSON**



**UTB – 650**



**CLAAS – Combine & Harvester**



**DEUTZ – FAHR**



**URSUS**



**FORD**



**SUN RISE MITALI ENTERPRISES**

## ENGINE PARTS



**PISTON**



**LINER**



**CYLINDER HEAD**



**CAMSHAFT**



**CONNECTING ROD**



**CRANKSHAFT**



**EXHAUST MANIFOLD**



**BALANCER UNIT**





**SUN RISE MITALI ENTERPRISES**

## TRANSMISSION PARTS



**DIFFERENTIAL SPIDER KIT**



**SELECTOR FORK**



**GEAR INPUT**



**PINION**



**GEAR**



**CARRIER UNIT**



**GEAR**



**GEAR REVERSE IDLER**



# SUN RISE MITALI ENTERPRISES

## TRANSMISSION PARTS



**SHAFT**



**PTO - SHAFT**



**PINION**



**GEAR SHAFT**



**PTO - SHAFT INPUT**



**MAIN SHAFT**



**BEARING**



**COUNTER SHAFT**





## HYDRAULIC PARTS



**HYD LIFT CYLINDER**



**PLUNGER**



**DRAFT CONTRL ASSEMBLY**



**CAM SHAFT**



**LEVER ASSEMBLY**



**DRAFT CONTROL LINK**



**LUB OIL PUMP**



**HYDRAULIC PUMP**





**SUN RISE MITALI ENTERPRISES**

## HYDRAULIC PARTS



**RELIEF VALVE**



**HYDRAULIC COUPLING**



**PISTON**



**HYDRAULIC PUMP**



**HYD PUMP REPAIR KIT**



**CONTROL VALVE**



**PUMP SUPPORT**



**HYDRAULIC HOSES**



**SUN RISE MITALI ENTERPRISES**

## **AXLE & STEERING PARTS**



**HALF AXLE**



**STEERING ARM**



**SPINDLE**



**STEERING SHAFT**



**POWER STEERING  
PUMP**



**BRACKET  
STEERING SHAFT**



**FRONT  
AXLE**



**CROWN WHEEL &  
PINION**





# CLUTCH COMPONENT



**CARRIER**



**CLUTCH ASSEMBLY**



**CLUTCH MASTER  
CYLINDER**



**CLUTCH  
BEARING**



**MAIN DRIVE  
PLATE**



**CLUTCH  
PRESSURE PLATE**



**COUPLING SLIDING**



**CLUTCH SPRING**





## **AXLE & STEERING PARTS**



**SHAFT ROCKER**



**STEERING SHAFT**



**HUB CAP**



**STEERING  
PUMP**



**STEERING WHEEL**



**TIE ROD END**



**STEERING BOX  
ASSEMBLY**



**STEERING  
ARM**



## **LIGHT LAMP & GAUGES**



**WORK LAMP**



**LIGHT  
REAR**



**GAUGE –  
VOLTMETER**



**TRACTOR HEAD  
LAMP**



**GAUGE-OIL  
PRESSURE**



**GAUGE –  
TEMPERATURE**



**TRACTORMETER**



**FUEL  
GAUGE**





## **BRAKE & WHEEL PARTS**



**BREAK DRUM**



**WHEEL HUB**



**BONNET ASSEMBLY**



**BRAKE LINING**



**WHEEL RIM-FRONT**



**WHEEL RIM-REAR**



**FRONT TYRE**



**REAR TYRE**





## LINKAGE PARTS



**TOP LINK**



**KUBOTA KIT**



**WELD ON END**



**DRAW BAR**



**LEVELLING BOX  
ASSEMBLY**



**STABILIZER CHAIN**



**HYDRAULIC LIFT  
SHAFT**



**HITCH BALLS**



**SUN RISE MITALI ENTERPRISES**

## **ELECTRICAL COMPONENT**



**STARTER MOTOR**



**ARMATURE**



**DRIVE  
ASSEMBLY**



**OIL PRESSURE  
SWITCH**



**ALTERNATOR**



**HEATER PLUG**



**SWITCH-OIL PRESSURE**



**DYNAMO**





## COOLING PARTS



**FAN BLADE**



**RADIATOR**



**WATER PUMP**



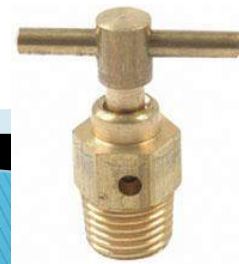
**RADIATOR CAP**



**WATER PUMP  
REPAIR KIT**



**SEAL-WATER  
PUMP**



**DRAIN  
TAP**



**RADIATOR  
HOSE**





# **AGRICULTURE IMPLEMENT PARTS**

## ➤ TILLAGE PARTS

1. HARROW DISC
2. TINES
  - ❖ S – TINE
  - ❖ DOUBLE COIL TINE
  - ❖ CHISEL TINE
3. SPRINGS
  - ❖ TILLER SPRING
  - ❖ HARROW COMPRESSION SPRING
4. SHOVELS
5. PLOUGH BLADES
6. BOLTS
7. DISC HARROW AXLE
8. SCARIFIER SHANK

## ➤ HARVESTER PARTS

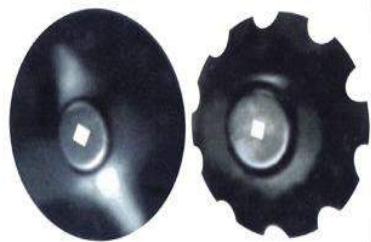
1. FINGERS / GUARDS
2. CROP LIFTER
3. RASP BAR

## ➤ IRRIGATION

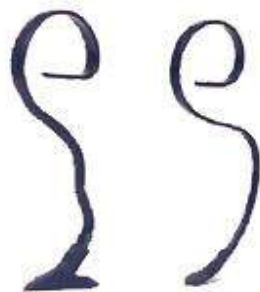
1. SPRAYERS
  - ❖ KNAPSACK SPRAYER
  - ❖ BOOM SPRAYER
2. SPRINKLER



## TILLAGE PARTS



**HARROW DISC**



**S - TINES**



**DOUBLE COIL  
TINES**



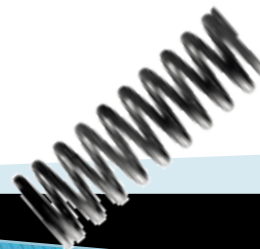
**FORGED FLAIL  
TINES**



**CHISEL  
TYNES**



**TILLER  
SPRINGS**



**HARROW SPRING**



**TOPPER  
BLADE**



## TILLAGE PARTS



**TILLER SHOVELS**



**SWEEP**



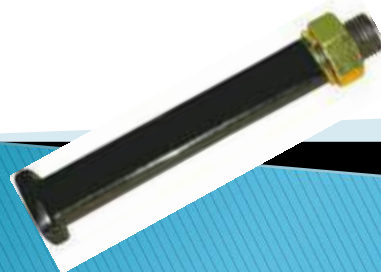
**PLOUGH BLADES**



**POWER TILLER  
BLADE**



**FASTENERS FOR  
HARROW & PLOUGH**



**DISC HARROW  
AXLE**



**SCARIFIER  
SHANK**



**FLAIL MOWER  
BLADE**





## **HARVESTER & IRRIGATION PARTS**



**FINGERS / GUARDS**



**CROP LIFTERS**



**RASP BAR**



**HAY TINE**



**KANTSACK SPRAYER**



**BOOM SPRAYER**



**BLADE FOR CUTTER  
BAR**



**SPRINKLER**



# SUN RISE MITALI ENTERPRISES

## GENERAL PURPOSE ITEMS



**GROUND ENGAGING TOOLS**



**HOOKS**



**PARKING JACKS**



**FORGED SHACKLES**



**BALE  
SPEAR**



**TOWING  
EYES**



**HARROW**



**WHEEL JACK**





**SUN RISE MITALI ENTERPRISES**

## **AGRICULTURE IMPLEMENTS**

- **WE ARE GLOBALLY RENOWNED EXPORTERS OF TRACTORS DRAWN SOIL PREPARATION AND CULTIVATION AGRICULTURE IMPLEMENTS.**
  
- **OUR DIVERSE PRODUCT RANGE INCLUDES**
  - ❖ **ROTARY TILLER**
  - ❖ **LAND LEVELLER**
  - ❖ **DISC RIDGER**
  - ❖ **SUB SOILER**
  - ❖ **TIPPING TRAILOR**
  - ❖ **ROTARY SLASHER**
  
- **WE USE BEST QUALITY RAW MATERIAL TO MEET THE INTERNATIONAL STANDARDS**



## SOIL PREPERATION IMPLEMENTS



**ROTARY TILLER**



**ROTARY TILLER**



**SPRING LOADED  
CULTIVATOR  
/TILLER**



**SUBSOILER**



**TRAILED OFFSET DISC  
HARROW**



**TYNE RIDGER**





**SOIL PREPERATION IMPLEMENTS**



**LAND LEVELLER**



**HEAVY DUTY  
OFFSET  
DISC HARROW**



**MEDIUM DUTY RIGID  
TILLER**



**MOULD BOARD  
PLOWH**



**MOUNTED DISC  
PLOWH**



**MOUNTED DISC  
RIDGER**



## SOIL PREPRATION IMPLEMENTS



**MOUNTED DISC  
RIDGER**



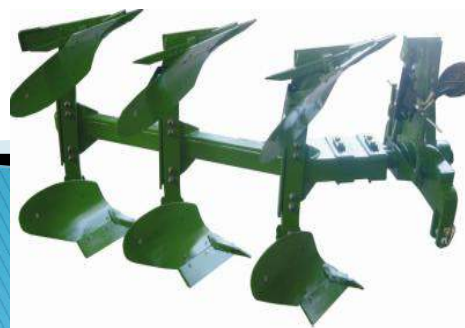
**MOUNTED OFFSET  
DISC HARROW**



**MOUNTED TANDEM DISC  
HARROW**



**POST HOLE DIGGER**



**REVERSIBLE MOUNTED  
MOULD BOARD PLOUGH**



**ROTARY SLASHER**





## **SOWING IMPLEMENTS**



**AXIAL FLOW VEGETABLE SEED  
EXTRACTOR**



**MAIZE PLANTER**



**PADDY GRAIN PLANTER  
(Zero till multi crop planter)**



**RIDGE PLANTER**



## **SOWING IMPLEMENTS**



**VEGETABLE NURSERY TRANSPLANTER**



**ZERO TILL MULTI-CROP PLANTER**



**ZERO TILL MULTI-CROP PLANTER**



**RAISED BED PLANTER**





**SUN RISE MITALI ENTERPRISES**

## **HARVESTER & HULAGE**



**SELF-PROPELLED COMBINE  
HARVESTER**



**TRACTOR DRIVEN COMBINE  
HARVESTER**



**TIPPING TRAILER**



**SUN RISE MITALI ENTERPRISES**

## **DIESEL ENGINES**



**DIESEL ENGINES – MADE IN INDIA**





**SUN RISE MITALI ENTERPRISES**

## GENERAL MOTORS & ELECTRIC MOTORS



**General Purpose  
ODP Motors**



**Totally Enclosed Fan  
Cooled Motors**



**IC Bauer Gearbox &  
Geared Motors**



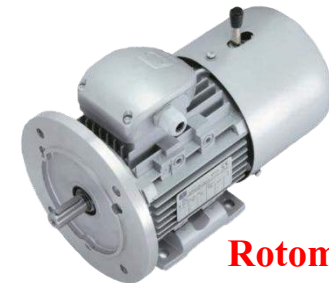
**IC Bauer Gearbox &  
Premium Efficient  
Motors**



**Severe Duty Motors Product Range**



**ABB Motors**



**Rotomotives**

**MOTORS – MADE IN INDIA**



# SUN RISE MITALI ENTERPRISES

## PUMPS



**Back Pull Out  
Centrifugal Pumps**



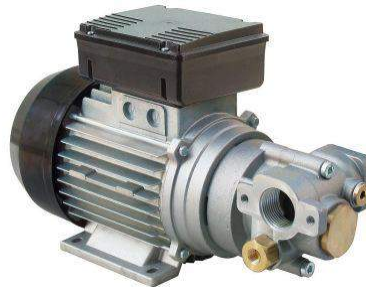
**Centrifugal  
Connector Pumps**



**Gear  
Pumps**



**Gear  
Pumps**



**Gear Pumps**



**Gear Pumps**

**PUMPS – MADE IN INDIA**



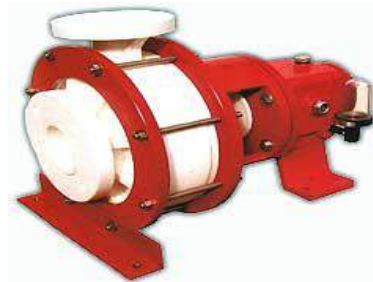


# SUN RISE MITALI ENTERPRISES

## PUMPS



**Polypropylene Magnetic  
Driven Pumps**



**Polypropylene Pumps**



SS-316 High Capacity Magnetic Drive Pump

**Stainless Steel Magnetic Driven  
Pumps**



**Vane Pumps**

**PUMPS – MADE IN INDIA**



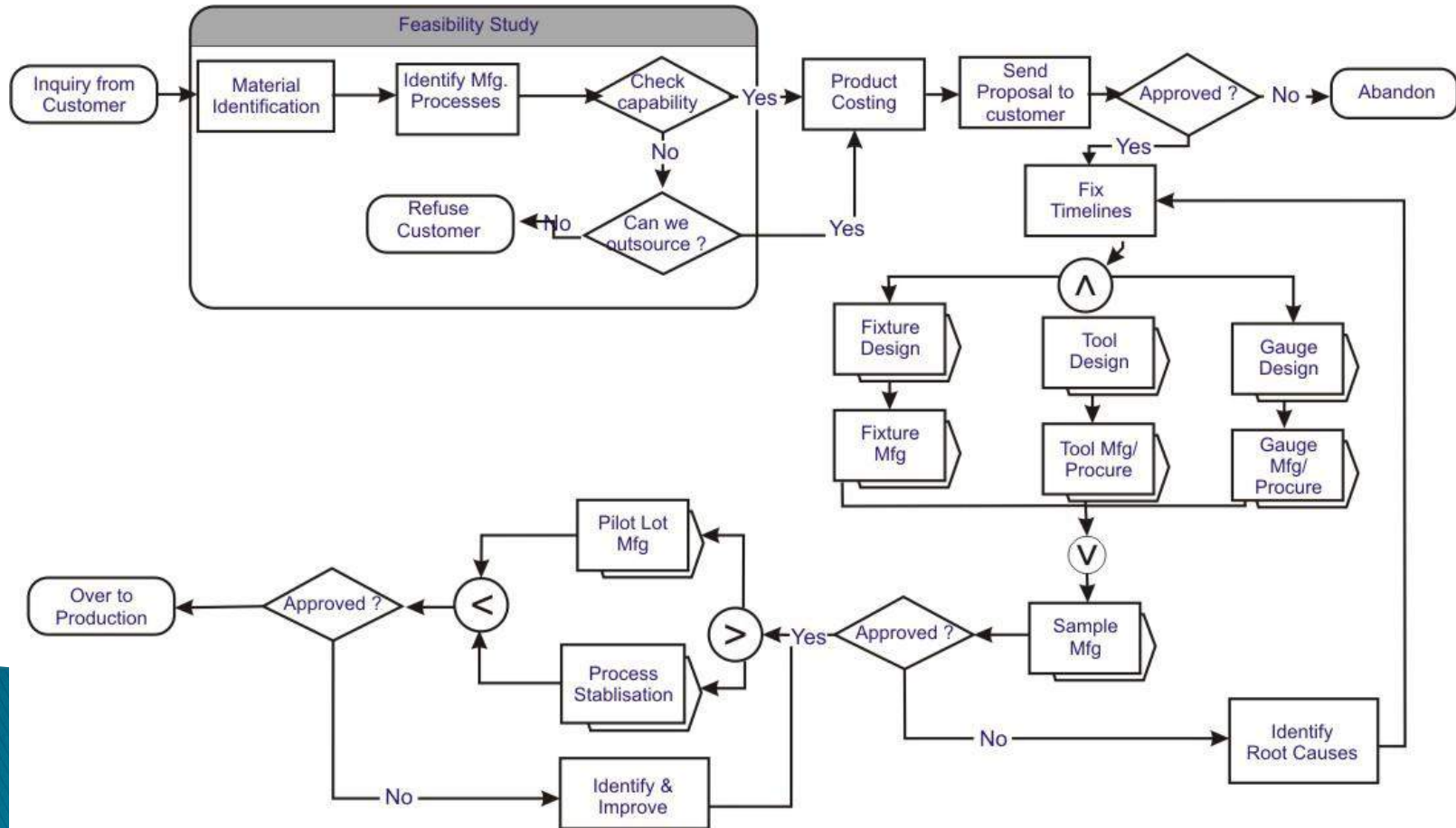
## **PROVIDING ENGINEERING SOLUTIONS**

- **DESIGN & DEVELOPMENT**
- **SAND CASTING (GREY IRON, S.G. IRON & STEEL CASTING)**
- **HIGH PRESSURE DIE CASTING (ALUMINIUM)**
- **FORGINGS**
- **MACHINING**
- **SHEET METAL**
- **HEAVY FABRICATION**
- **WELDING**
- **HEAT TREATMENT**
- **SURFACE COATING**





# PRODUCT DEVELOPMENT CYCLE





# **SUN RISE MITALI ENTERPRISES**

## **QUALITY POLICY**

- **SUN RISE MITALI ENTERPRISES IS COMMITTED TO TOTAL CUSTOMER SATISFACTION BY PROVIDING QUALITY PRODUCTS.**
- **“ZERO FAULT” IS THE GOAL TO OUR QUALITY ASSURANCE SYSTEM.**
- **ALL THE PRODUCTS ARE 100% CHECKED IN THE FRAME WORK OF OUR QUALITY CONTROL POLICY.**
- **WE ACCOMPLISH OUR CUSTOMER EXPECTATIONS BY CONTINUALLY IMPROVING “QUALITY MANAGEMENT SYSTEM”**





# SUN RISE MITALI ENTERPRISES

## QUALITY CONTROL FACILITIES



**SURFACE ROUGHNESS  
TESTER**



**SPECTROMETER FOR METAL  
ANALYSIS**



**PROFILE PROJECTOR**



**COORDINATE MEASURING MACHINE**



# QUALITY CONTROL FACILITIES



**HARDNESS TESTING MACHINE**



**MICROSCOPE WITH IMAGE ANALYZER**



**COMPUTERIZED UTM**



**PROOF LOAD TESTING MACHINE**





## QUALITY CONTROL FACILITIES



**RING GAUGE**



**PROFILE AND LEAD TESTER**



**AIR GAUGE**



**HEIGHT GAUGE**



**CYLINDER BORE GAUGE**



**SNAP GAUGES**



**PLUG GAUGE**



## **BUSINESS PLANS**

### **➤ SALES**

- ❖ TARGET TO ACHIEVE A GROWTH OF 30% IN ANNUAL SALES**

### **➤ EXPORTS**

- ❖ PENETRATION INTO NEW COUNTRIES**
- ❖ EXPANSION OF THIRD COUNTRY TRADE**

### **➤ DIVERSIFICATION INTO NEW PRODUCT SEGMENT LIKE:**

- ❖ CONSTRUCTION TOOLS MACHINERY**
- ❖ SPARE PARTS FOR HEAVY COMMERCIAL VEHICLES.**
- ❖ MINERALS AND METALLURGY**





**SUN RISE MITALI ENTERPRISES**

## COMPANY CONTACT ADDRESS



### **SUN RISE MITALI ENTERPRISES**

A-13, LOVELY APARTMENT,  
MAYUR VIHAR, PHASE – 1 EXT. DELHI-110091  
INDIA

TEL# +91-011-22743854

MOBILE#+91-9953775678 / 8588814020

EMAIL ID: [SRMENT78@GMAIL.COM](mailto:SRMENT78@GMAIL.COM)

SKYPE: KANOJIA\_RAGHU

WEBSITE: [SRMENTINDIA.COM](http://SRMENTINDIA.COM)



**SUN RISE MITALI ENTERPRISES**

