

BADE ISPAT AND METAL PVT LTD



Certified by ISO 9001: 2008, Bade Ispat And Metal Pvt Ltd is an enterprise that is engaged in the business of high quality industrial flanges.

We are a noteworthy manufacturer and supplier of WNRF flanges, threaded-screwed flanges, socket weld flange, slip on flanges, plate flanges, lap joint flanges, forged flanges, and blind flanges.

ABOUT US

Deeply rooted in Mumbai (Maharashtra, India), Bade Ispat And Metal Pvt Ltd is one of the well-known manufacturers and suppliers of the optimum quality industrial flanges. It is operating in the industry since 2018. Since then, we are committed towards our customers by providing fast, friendly, and reliable services.

Manufacturing Process

Our manufacturing unit is equipped with heat treatment machines, welding, grinding, hydraulic testing, annealing, pickling & passivation, packing facilities, and others. We have adopted innovative processes. Our products pass through burst testing as per ASTM standard. Besides this, we have house hydro testing facility.

Quality Policy

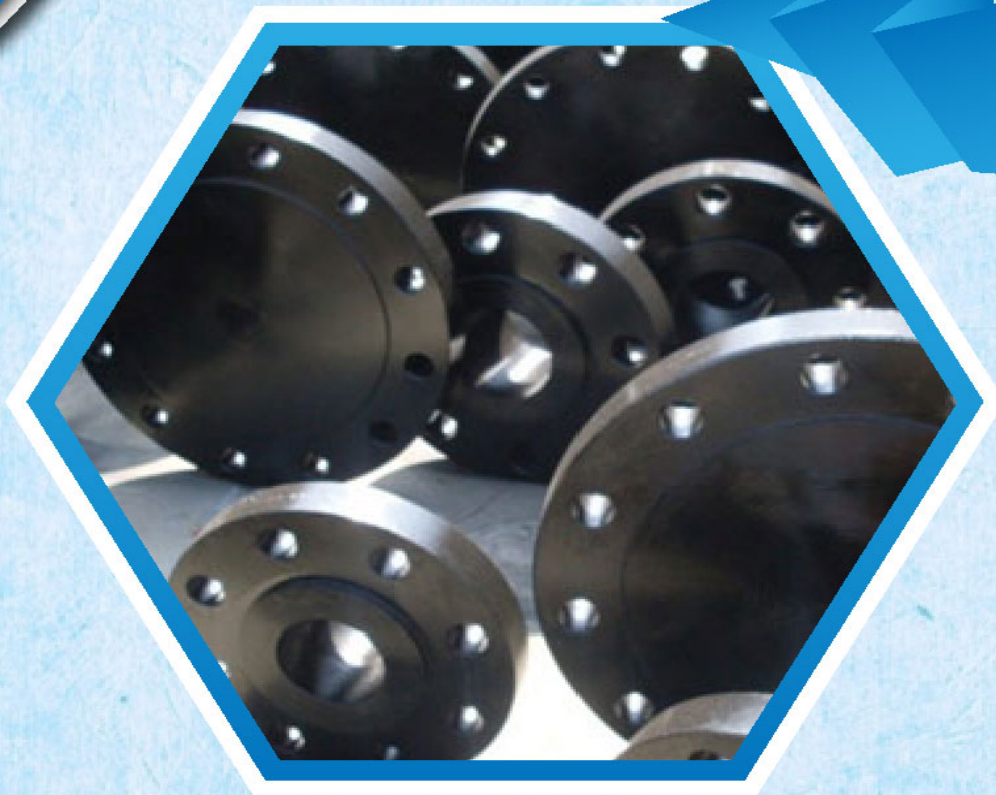
We are committed to achieving high quality & cost-effectiveness products and processes. We aspire to attain constant improvements in diverse levels. Besides, we work on optimum level of environment awareness and protection.

Mission

FitTBch has the mission of providing Quality services related to the fittings and flanges in all grades of metals according to the standards! specification of our Customers. Working towards our Mission, we follow the axioms of total Quality assurance and continuous improvement in product features and processes by upgrading equipment of world's latest technology. We will strive to do this better to achieve world class manufacturing system and continually improve so that all customers and members' of the FitTech team can share prosperity in long term growth.

Name of CEO
Year of Establishment
Nature of Business

Mr. Rahul Bokadia
2018
Manufacturer & Supplier



CARBON STEEL/ STAINLESS STEEL BLIND FLANGE PRESSURE :

- ANSI/ASME B16.5 Blind Flange 150lb
- ANSI/ASME B16.5 Blind Flange 300lb
- ANSI/ASME B16.5 Blind Flange 400lb
- ANSI/ASME B16.5 Blind Flange 600lb
- ANSI/ASME B16.5 Blind Flange 900lb
- ANSI/ASME B16.5 Blind Flange 1500lb
- ANSI/ASME B16.5 Blind Flange 2500lb
- ANSI/ASME B16.47 Series B Blind Flange 75lb
- ANSI/ASME B16.47 Series B Blind Flange 150lb
- ANSI/ASME B16.47 Series B Blind Flange 300lb
- ANSI/ASME B16.47 Series B Blind Flange 400lb
- ANSI/ASME B16.47 Series B Blind Flange 600lb
- ANSI/ASME B16.47 Series B Blind Flange 900lb
- ANSI/ASME B16.47 Series A (MSS SP44) Blind Flange 150lb
- ANSI/ASME B16.47 Series A (MSS SP44) Blind Flange 300lb
- ANSI/ASME B16.47 Series A (MSS SP44) Blind Flange 400lb
- ANSI/ASME B16.47 Series A (MSS SP44) Blind Flange 600lb
- ANSI/ASME B16.47 Series A (MSS SP44) Blind Flange 900lb

DETAILS :

- Forged flange the conventional flange products. It is invented on the basis of the cast flange into production, its intensity to be higher than the cast steel flange many interconnected so that the tube with the tube parts, is connected to the tube end.
- Hammered holes in the flange bolt flange abuts. Forged flange gasket sealing. Forged flange fittings (flanged pipe fittings) fittings with forged flange (flange or disk access). It can be cast from (Figure N), can also be threaded connections, or welding. Flanged connections (flange, joint) by a pair of flange, a gasket and a number of bolts and nuts. Gasket on the between two flange sealing surface, tighten the nut, than on the gasket surface deformation pressure reaches a certain value, and fill the sealing surface asperities join not leak tight.



LAP JOINT FLANGES

LAP JOINT FLANGES HAVE CERTAIN SPECIAL ADVANTAGES :

- Freedom to swivel around the pipe facilitates the lining up of opposing flange bolt holes.
- Lack of contact with the fluid in the pipe often permits the use of inexpensive carbon steel flanges with corrosion resistant pipe.
- In systems which erode or corrode quickly, the flanges may be salvaged for re-use.



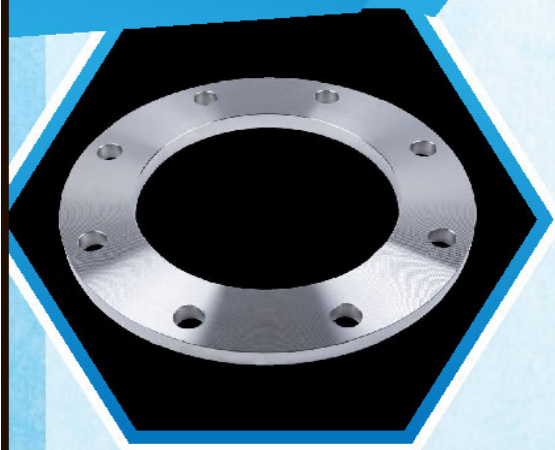
PLATE FLANGES

CARBON STEEL/ STAINLESS STEEL PLATE FLANGE PRESSURE :

- ANSI/ASME B16.5 Plate Flange 150lb
- ANSI/ASME B16.5 Plate Flange 300lb
- ANSI-ASME B16.5 Plate Flange 400lb
- ANSI/ASME B16.5 Plate Flange 600lb
- ANSI/ASME B16.5 Plate Flange 900lb
- ANSI/ASME B16.5 Plate Flange 1500lb
- ANSI/ASME B16.5 Plate Flange 2500lb



SLIP ON FLANGES



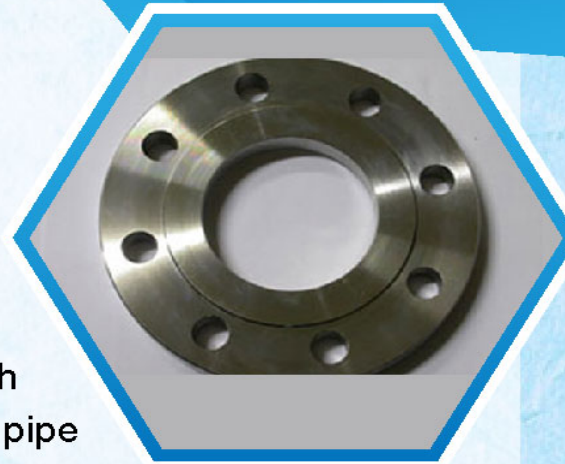
CARBON STEEL SLIP ON FLANGES/ SORF FLANGES :

ASTM A105/A105N, A350 LF1, LF2 CL1/CL2, LF3 CL1/CL2, A694 F42, F46, F48, F50, F52, F56, F60, F65, F70, A516.60, 65, 70 (Spectacle Blind Flange, Spacer Ring/Spade Flange), Steel RST37.2, C22.8.

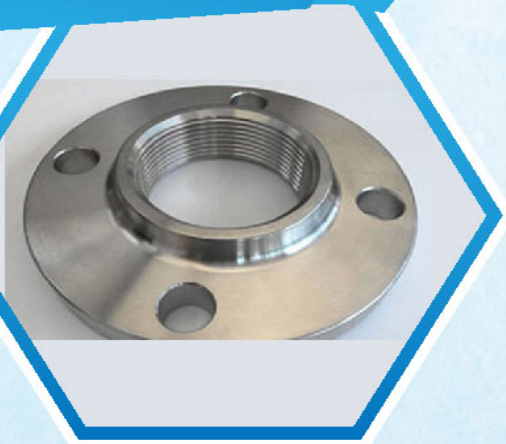
PRODUCTS

SOCKET WELD FLANGES

Socket weld flange is similar to the slip-on flange in outline, but the bore is counter-bored to accept pipe. Socket welding pipe flanges are typically used on smaller sizes of high pressure pipes. Socket weld flanges are widely used in high pressure systems such as hydraulic equipment and steam lines. Socket weld pipe flanges are attached by inserting the pipe into the socket end and then applying fillet weld around the hub of the flange. This allows for a smooth bore and better flow of the fluid or gas inside of the pipe. An optional internal weld may be applied in high stress applications.

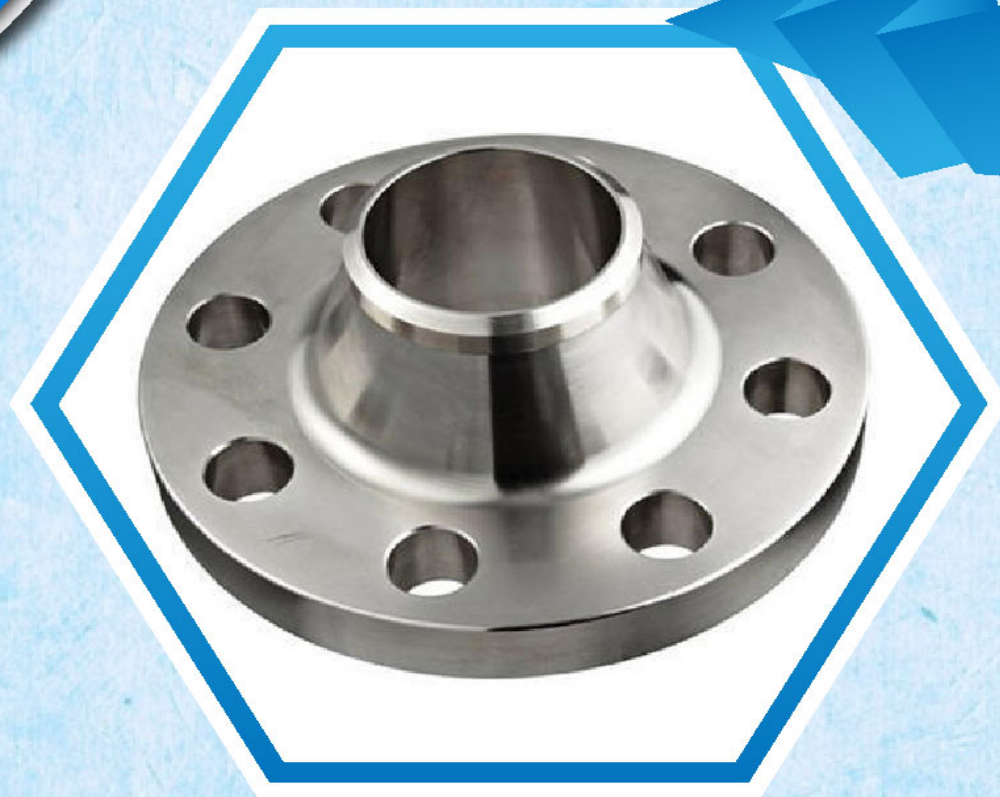


THREADED SCREWED FLANGES



CARBON STEEL THREADED/ SCREWED FLANGES :

ASTM A105/A105N, A350 LF1, LF2 CL1/CL2, LF3 CL1/CL2, A694 F42, F46, F48, F50, F52, F56, F60, F65, F70, A516.60, 65, 70 (Spectacle Blind Flange, Spacer Ring/Spade Flange), Steel RST37.2, C22.8

**CARBON STEEL WNRF FLANGE/ WELD NECK FLANGE :**

ASTM A105/A105N, A350 LF1, LF2 CL1/CL2, LF3 CL1/CL2, A694 F42, F46, F48, F50, F52, F56, F60, F65, F70, A516.60, 65, 70 (Spectacle Blind Flange, Spacer Ring/Spade Flange), Steel RST37.2, C22.8

**CARBON STEEL/ STAINLESS STEEL WELD NECK
FLANGE PRESSURE :**

- ANSI/ASME B16.5 WNRF Flange/ Weld Neck Flange 150lb
- ANSI/ASME B16.5 WNRF Flange/ Weld Neck Flange 300lb
- ANSI-ASME B16.5 WNRF Flange/ Weld Neck Flange 400lb
- ANSI/ASME B16.5 WNRF Flange/ Weld Neck Flange 600lb
- ANSI/ASME B16.5 WNRF Flange/ Weld Neck Flange 900lb
- ANSI/ASME B16.5 WNRF Flange/ Weld Neck Flange 1500lb
- ANSI/ASME B16.5 WNRF Flange/ Weld Neck Flange 2500lb

**CONTACT
US**

BADE ISPAT AND METAL PVT LTD



MR. RAHUL BOKADIA

ADDRESS : 3rd Floor, 21, Dhanji Mulji Building,
Dhirubhai Parekh Marg, 83 A/B Kalbadevi,
Mumbai, Maharashtra, India - 400002

PHONE : +91-9619388667, 08045133375

EMAIL ID : badeispatmetalpvtltd@gmail.com

WEBSITE : <https://www.badeispat.com>

WEBPAGE :
<https://www.exportersindia.com/niraj-forges/>