

**Government Clients**

Jeya Engineering has successfully associated with many prestigious



**Corporate Clients**



....the house of solutions for your needs

**ANYTHING IN STEEL**

....more than you imagine...

**Jeya Engineering & Infrastructures Private Limited**  
 (An ISO 9001:2008 Certified Company)



**Jeya Engineering & Infrastructures Private Limited**

Regd Office : 324, South Beach Road, Tuticorin - 628 001 Ph : 91-461-2322017, 2331331,4042222  
 Fax : 91-461-2327071  
 E-mail : [projects@jeyaengg.in](mailto:projects@jeyaengg.in) Website : [www.jeyaengg.in](http://www.jeyaengg.in)

**Factory :**

C-103 A Sipcot Industrial Complex  
 Tuticorin-628008  
 Ph : +91 461 2331331, 2341443, 2340109  
 Mobile : 95 00 93 70 71

Plot No. 8,11,12,13 (Phase I)  
 SIDCO Industrial Estate, Tuticorin.

Plot No. G-61 B SIDCO Industrial Estate,  
 Kakkalur Chennai - 600032

Jeya Engineering is a leading general contractor based in the State of Tamil Nadu. Established in 1976 as part of Jeya Group - a major conglomerate with over 2 Companies in SIPCOT, SIDCO to undertake projects in contribution to the large ongoing developments. Jeya Engineering has successfully completed numerous turnkey projects for many prestigious clients in different sectors including :

- ✓ Engineering, Procurement, Installation & Commissioning (EPIC).
- ✓ Oil, Gas, Petrochemical and Industrial.
- ✓ Pipeline Construction.
- ✓ Power Generation, Substations & Desalination Plants.
- ✓ Maintenance of Oil & Gas and Petrochemical Installations.
- ✓ Food Processing Industry Equipments.
- ✓ Operation & Maintenance Services.
- ✓ Pre-Engineered buildings (PEB).
- ✓ Solar Power Plants Implements.

Our commitment to execute projects with highest quality, on schedule and within budget while adhering to excellent standards of health, safety and environmental positioned in Tuticorin.

In line with the growing demands to infrastructure and new developments, Jeya Engineering has invested in its resources to meet international standards and upgraded its fleet of equipment in preparation to

**Jeya Strength Includes**

**Mechanical Works:**

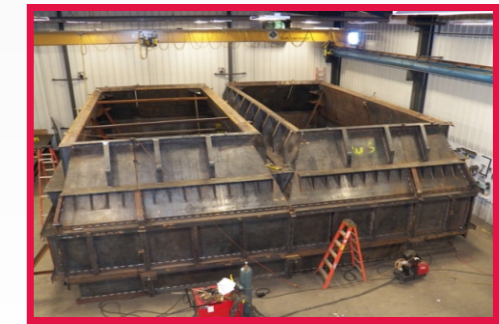
- \* Supply, fabrication & erection of structural work
- \* Supply, fabrication and erection of major process static equipment
- \* Process piping and Pipelines
- \* Fire fighting systems
- \* Pipe gantry's and support systems
- \* Cranes & Bucket Maintenance
- \* Supply and erection of rotary equipment
- \* Insulation, Painting and scaffolding works
- \* Structural cabling
- \* Instrumentation and control works
- \* All Kinds of critical, precision & heavy machining
- \* Operation Maintenance and Services

**Electrical and Instrumentation**

- \* Supply and erection of major electrical equipment.
- \* Power distribution systems
- \* Lighting and power
- \* Fire detection and alarm systems

**Civil work**

- \* Enabling works
- \* Concrete works
- \* Curtain wall systems
- \* Steel structure



## Why PEB STEEL?

Innovative Design (PEB, Truss, Open-Web Joists, 3-10 floors Medium Rise Steel Buildings.)

- ◆ Latest buildings code (IBC 2006)
- ◆ Latest design code (AISC 2005)
- ◆ Indian standards code (IS 801 & IS 811)
- ◆ Fast four weeks delivery
- ◆ Reduced cost and construction time
- ◆ Shot Blasting for All jobs
- ◆ Galvanized or painted purlins
- ◆ ISO 9001-2000 for supply and Erection
- ◆ Large clear span
- ◆ Ease of future expansion
- ◆ Low maintenance cost

## Turnkey Projects :

### PEB

- ◆ Civil works design.
- ◆ Structures ,Truss, Purling, Column side runners
- ◆ EOT Cranes supply with all electrical equipments
- ◆ Roofing sheet
- ◆ Day Light Sheet
- ◆ Side Gladding and wall

### Pre Engineered Building System

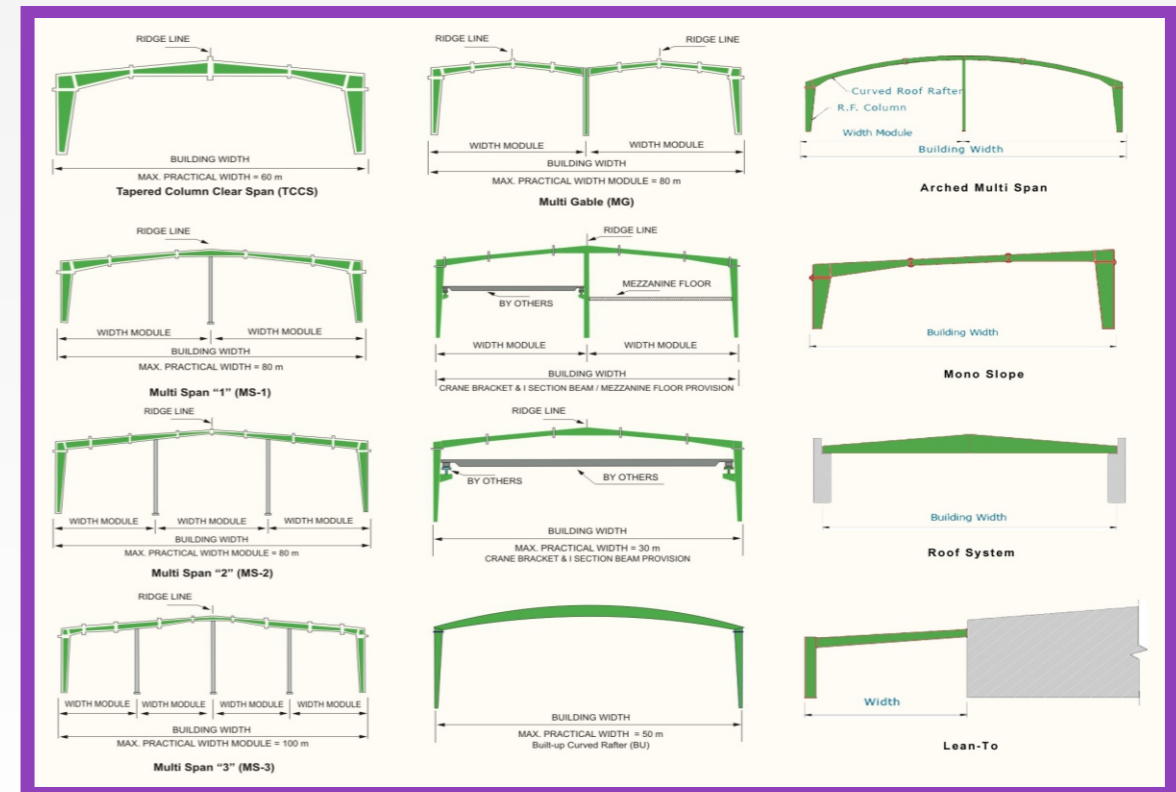
- ◆ Design
- ◆ Engineering
- ◆ Civil
- ◆ Fabrication
- ◆ Erection of PEB

### Application of Pre-engineered Buildings

### PEB finds wide applications in the following areas :

- ☞ Factory sheds
- ☞ Ware Houses
- ☞ Workshops
- ☞ Hangars
- ☞ Power Plants
- ☞ Railway Platforms
- ☞ Fuel & Gas Stations

- ☞ Super Markets
- ☞ Airports Terminal Buildings
- ☞ Cold Storages
- ☞ Retails Showrooms
- ☞ Hospitals
- ☞ Residential Buildings
- ☞ Stadiums



## SOLAR PROJECTS

- ◆ Solar is globally recognized leading energy solutions
- ◆ Carrying forward the rich legacy and extensive manufacturing experiences of the JEIPL since 2015 is building on 35 years old success story. We have been successfully able to demonstrate. Our capability even before the solar witnessed active growth and development in south india.

### AIM is to GENERATE ENERGY for the FUTURE

- ◆ As India grapples with a chronic power soaring energy prices and the looming threat of global Climate changes, solar energy has emerged as the most attractive sustainable energy option.
- ◆ With the stimulus packages from the government grid and off grid installation are the major application areas for solar modules
- ◆ Solar modules used for commercial industrial as well as residential purpose, Roof top installations, solar park and solar power plants.
- ◆ The Government has targeted and show interest on implementing solar through grid scale projects. Hence players are hope full that the solar sector in Tamil Nadu will take off well

### SOLAR Module Mounting Structures

JEIPL offers design and engineering for panel supports structures for setting and up GRID connected solar panel and solar power plants this includes supply, civil work and erection of structures.

