

## HYDRAULIC CYLINDERS

CATALOGUE NO : 2011-02

**SIMRAN FLOWTECH INDUSTRIES**

*Plot # 174, Sector -24, Industrial Area Faridabad 121005*

*Mobile : 9818247353 Telefax : 91-129-4028353*

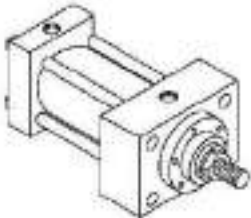
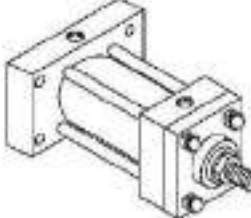
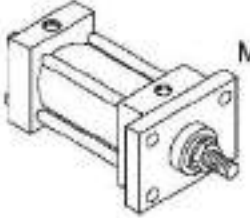
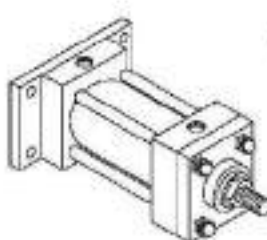
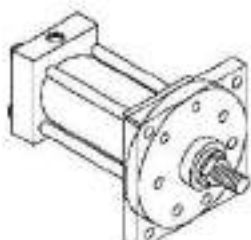
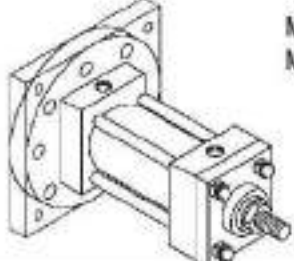
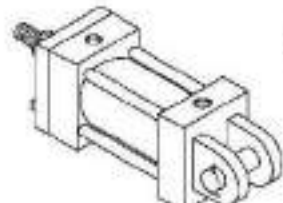
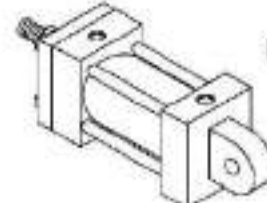
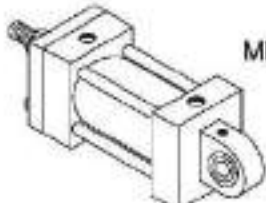
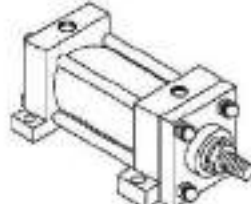
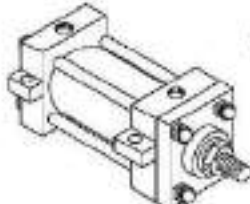
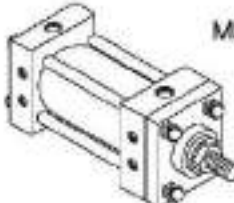
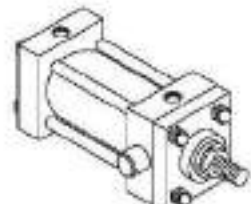
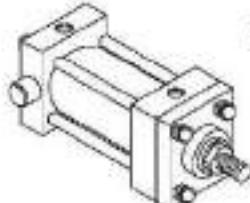
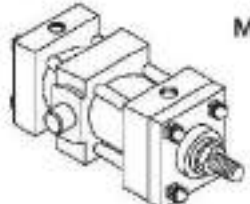
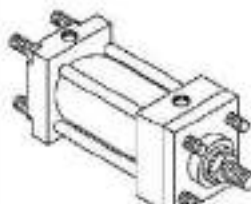
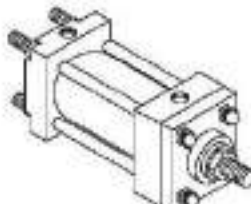
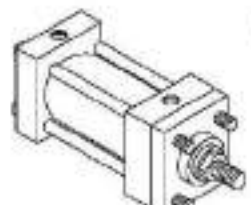
*simranflowtech@hotmail.com, www.simranflowtech.in*

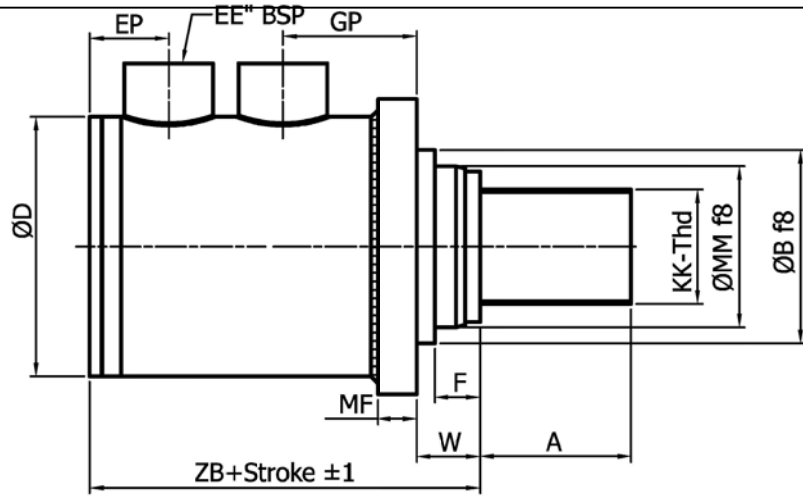


**ISO 9001-2000**

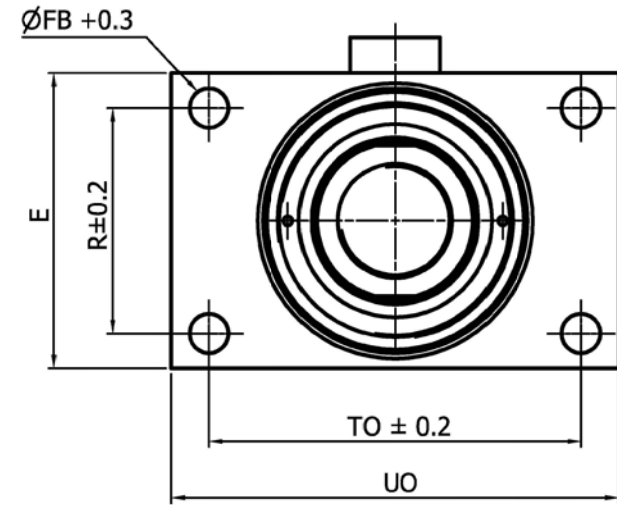
## SILENT FEATURES OF "SFI" BRAND CYLINDERS

<b>1</b>	<b>DESIGN</b>	<ul style="list-style-type: none"> <li>• Conforms to ISO Cylinder</li> <li>• Designed using 3D Modeling process ensuring high accuracy &amp; productivity</li> <li>• Roboust and sturdy design ensuring long life and troublefree performance</li> </ul>
<b>2</b>	<b>MANUFACTURING PROCESS</b>	<ul style="list-style-type: none"> <li>• ISO : 9001 certified process to ensure high quality products</li> <li>• Inspection at all stages of manufacturing</li> <li>• Major components CNC machined</li> </ul>
<b>3</b>	<b>RAW MATERIAL</b>	<ul style="list-style-type: none"> <li>• Tube : ST52 coldrawn seamless hones to H8 tolerance imported tubes</li> <li>• Rods : CK45 hardchrome plated rods of very high quality</li> <li>• Seals : Imported or very reputed brand seals are used</li> <li>• Other Components : Made of appropriate Alloy steels</li> </ul>
<b>4</b>	<b>TESTING</b>	<ul style="list-style-type: none"> <li>• Inhouse pressure testing facility for pressure upto 700 bar available</li> <li>• Each and every cylinder manufactured is tested before delivery</li> <li>• Inspection cum warrantiy certificates are issued against every supplied item.</li> </ul>
<b>5</b>	<b>WARRANTY</b>	<ul style="list-style-type: none"> <li>• All hydraulic cylinders manufactured by "SIMRAN FLOWTECH INDUSTRIES" are free from defects in workmanship and material and are warranted for trouble free performance for a period of 12 months from the date of supply under normal use and service (Excludes abuse, wear and tear) are specified in the GA drawing and / or operation and maintenance manual</li> </ul>

 <p>ME5</p>	 <p>ME6</p>	 <p>MF1</p>
 <p>MF2</p>	 <p>MF3 MF5</p>	 <p>MF4 MF6</p>
 <p>MP1</p>	 <p>MP3</p>	 <p>MP5</p>
 <p>MS2</p>	 <p>MS3</p>	 <p>MS4</p>
 <p>MT1</p>	 <p>MT2</p>	 <p>MT4</p>
 <p>MX1</p>	 <p>MX2</p>	 <p>MX3</p>

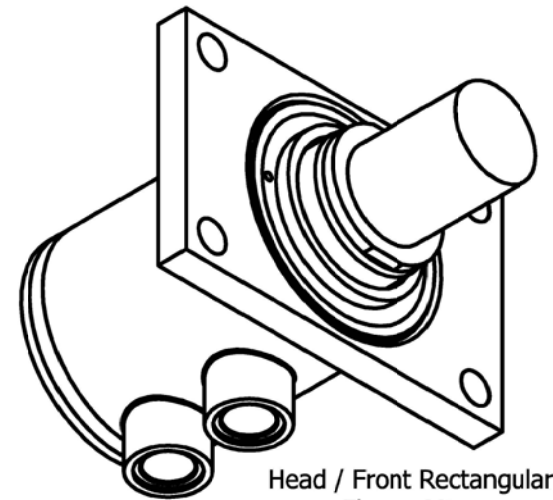


Ordering Code:- SF-WD-ME5-Bore x Rod x Stroke



Simran Flotech Std Rect. Front Flange Mtg As per ISO ME5

Sl.No	Bore Dia B H8	Rod dia MM f8	Rod Thd KK	Thd Lg A	Port EE" BSP	Spicot OD B f8	Dist W	Rod Extn F	Mtg Hloe Center		Mtg hole FB H13	Flange			Tube OD D	Gland Port GP	End Port EP	Total lg ZB
									R+/-0.2	TO+/-0.2		E	UO	MF				
1	40	18	M14X1.5	18	3/8"	30	25	13	41	87	11	63	110	10	50	40	29	135
2	40	28	M20X1.5	28	3/8"	42	25	13	41	87	11	63	110	10	50	40	29	135
3	50	22	M16X1.5	22	1/2"	34	25	16	52	105	14	75	130	16	60	43	29	141
4	50	36	M27X2	36	1/2"	50	25	16	52	105	14	75	130	16	60	43	29	141
5	63	28	M20X1.5	28	1/2"	42	32	19	65	117	14	90	145	16	73+2	44	29	149
6	63	45	M33X2	45	1/2"	60	32	19	65	117	14	90	145	16	73+2	44	29	149
7	80	36	M27X2	36	3/4"	50	31	22	83	149	18	115	180	20	95	59	35	182
8	80	56	M42X2	56	3/4"	72	31	22	83	149	18	115	180	20	95	59	35	182
9	100	45	M33X2	45	3/4"	60	35	25	97	162	18	130	200	22	115	73	35	200
10	100	70	M48X2	63	3/4"	88	35	25	97	162	18	130	200	22	115	73	35	200
11	125	56	M42X2	56	1"	72	35	25	126	208	22	165	250	22	140+5	75	44	218
12	125	90	M64X3	85	1"	108	35	25	126	208	22	165	250	22	140+5	75	44	218
13	160	70	M48X2	63	1"	88	32	25	155	253	26	205	300	25	180+10	95	63	280
14	160	110	M80X3	95	1"	133	32	25	155	253	26	205	300	25	180+10	95	63	280



Head / Front Rectangular Flange Mtg. ISO ME5 Mtg.

BOR DIA.	Ø B				
ROD DIA.	Ø MM				
STROKE	2000 mm				
MOUNTING	Front Rect. Flange ME5/MF1				
TYPE	Welded / Double Acting				
CUSHIONING	Both End Non Cushioned				
T.P.	210 kg/cm				
HYDRAULIC OIL	Mineral Oil ISO VG 32/46/68				
MAX SPEED	0.1 M/SEC.	REV.	ALTERATION	DATE	25-01-10

Drawn :-  
LOKESH

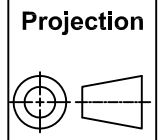
Approved :-  
G S Virdi

DATE :-



**SIMRAN FLOWTECH INDUSTRIES**  
PLOT NO 174, SECTOR - 24,  
FARIDABAD - 121005

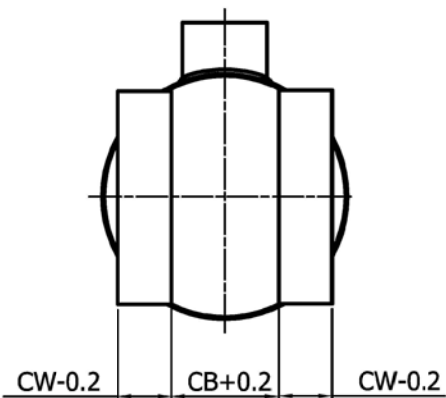
This drawing is the sole property of  
SIMRAN FLOWTECH INDUSTRIES and must not be copied  
or reproduced without written consent



Scale  
N.T.S

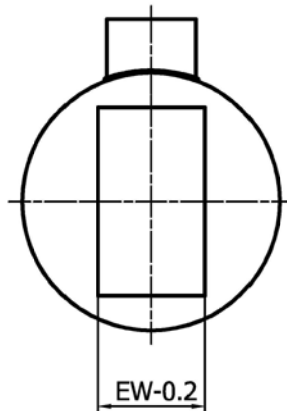
Cylinder Type :-  
**SF- WD-ME5**

REV:  
**00**



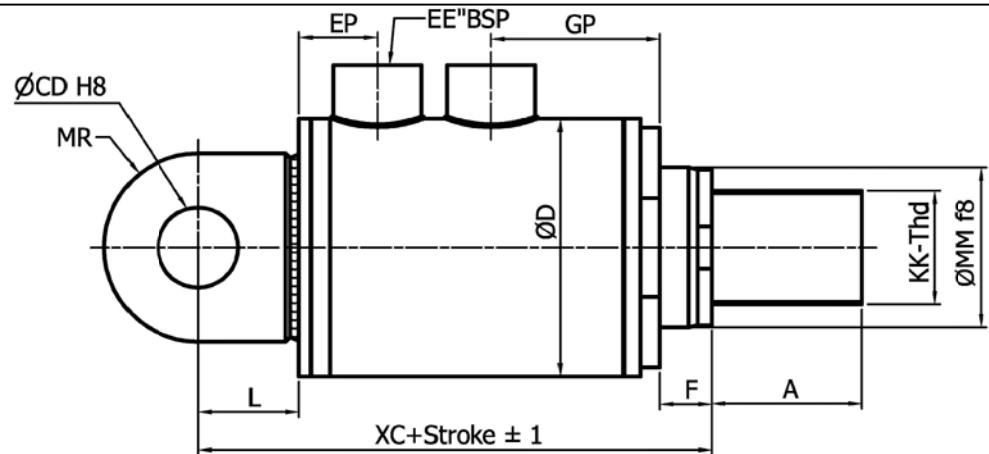
Rear Female Clevis  
ISOMP1 Mtg

Ordering Code:- SF-WD-MP1-Bore x Rod x Stroke

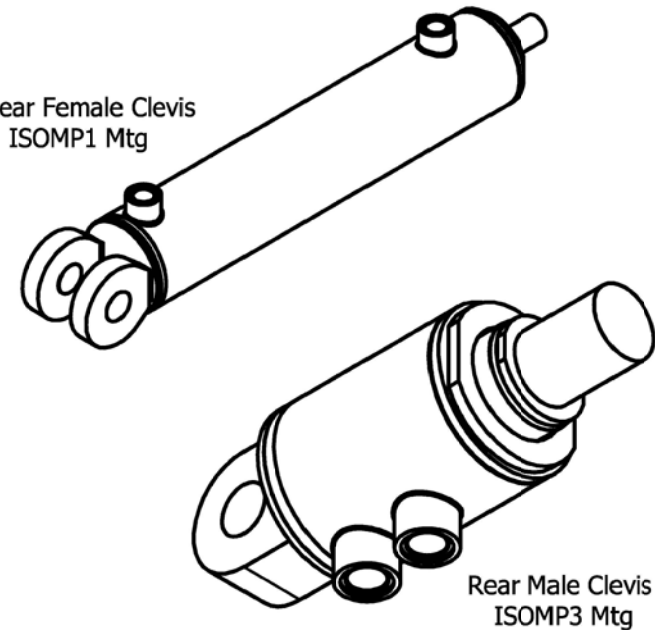


Rear Male Clevis  
ISOMP3 Mtg

Ordering Code:- SF-WD-MP3-Bore x Rod x Stroke



Rear Female Clevis  
ISOMP1 Mtg



Rear Male Clevis  
ISOMP3 Mtg

Simran Flotech Std Rect. Rear Clevis Mtg As Per ISO MP1 (Female Clevis) & MP3 (Male Clevis)

Sl.No	Bore B H8	Rod MM f8	ROD THD KK	THD LG A	PORT EE''BSP	Dist L	Hole CD-H8	Radius MR	MP3 EW-0.2	MP1 CW-0.2	MP1 CB+0.2	Rodextn F	TUBE OD	Endport EP	Glandport GP	Total lg XC
1	40	18	M14X1.5	18	3/8"	19	14	17	20	10	20	33	50	29	50	172
2	40	28	M20X1.5	28	3/8"	19	14	17	20	10	20	33	50	29	50	172
3	50	22	M16X1.5	22	1/2"	32	20	29	30	15	30	29	60	29	57	191
4	50	36	M27X2	36	1/2"	32	20	29	30	15	30	29	60	29	57	191
5	63	28	M20X1.5	28	1/2"	32	20	29	30	15	30	35	73	29	60	200
6	63	45	M33X2	45	1/2"	32	20	29	30	15	30	35	73	29	60	200
7	80	36	M27X2	36	3/4"	39	28	34	40	20	40	20	95	35	78	229
8	80	56	M42X2	56	3/4"	39	28	34	40	20	40	20	95	35	78	229
9	100	45	M33X2	45	3/4"	54	36	50	50	25	50	20	115	35	91	257
10	100	70	M48X2	63	3/4"	54	36	50	50	25	50	20	115	35	91	257
11	125	56	M42X2	56	1"	57	45	53	60	30	60	29	145	44	95	289
12	125	90	M64X3	85	1"	57	45	53	60	30	60	29	145	44	95	289
13	160	70	M48X2	63	1"	63	56	59	70	35	70	16	185	63	105	308
14	160	110	M80X3	95	1"	63	56	59	70	35	70	16	185	63	105	308

BOR DIA.	Ø B				
ROD DIA.	Ø MM				
STROKE	2000 mm				
MOUNTING	Rear Clavis ISO MP1 / MP3 Mtg				
TYPE	Welded / Double Acting				
CUSHIONING	Both End Non Cushioned				
T.P.	210 kg/cm				
HYDRAULIC OIL	Mineral Oil ISO VG 32/46/68				
MAX SPEED	0.1 M/SEC.	REV.	ALTERATION	DATE	

Drawn :-  
LOKESH

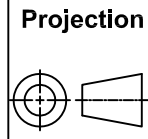
Approved :-  
G S Virdi

DATE :-  
25-01-10



**SIMRAN FLOWTECH INDUSTRIES**  
PLOT NO 174, SECTOR - 24,  
FARIDABAD - 121005

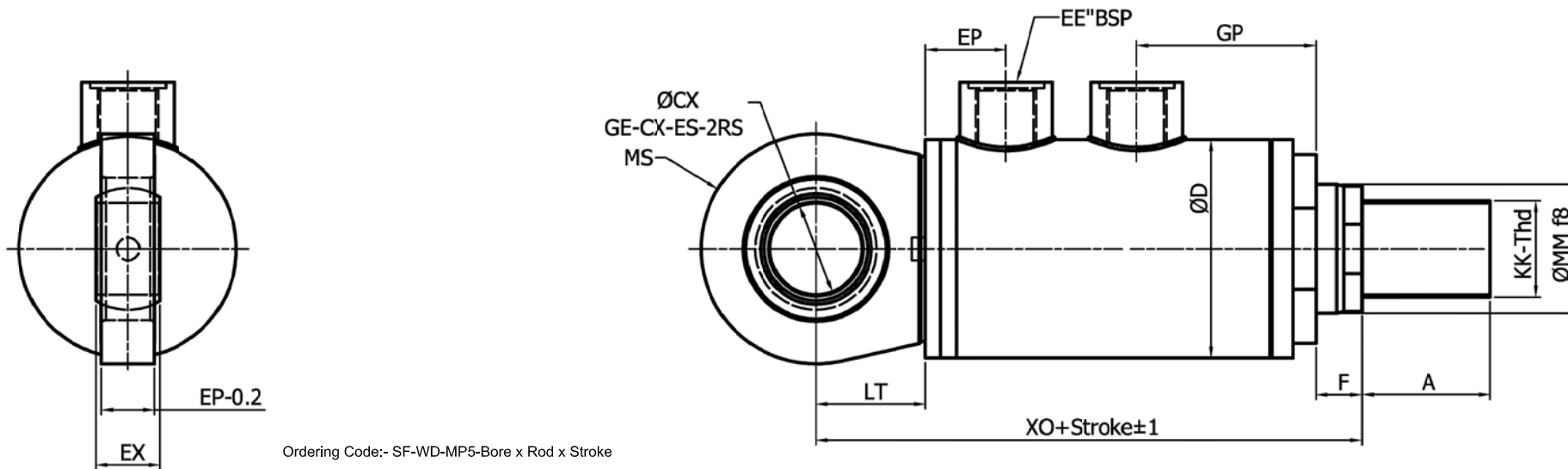
This drawing is the sole property of  
SIMRAN FLOWTECH INDUSTRIES and must not be copied  
or reproduced without written consent



Scale  
N.T.S

Cylinder Type :-  
SF - WD - MP1/MP3

REV:  
00

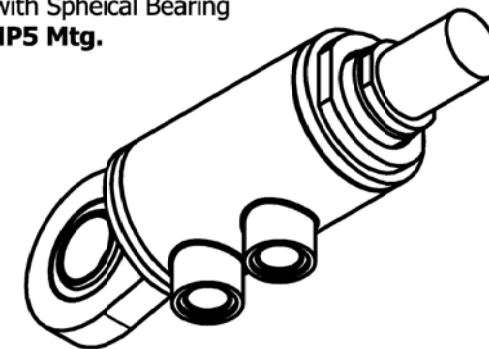


Ordering Code:- SF-WD-MP5-Bore x Rod x Stroke

Simran Flotech Std Rear Male Clevis With Spherical Bearing Mtg As per ISO MP5

Sl.No	Bore B H8	Rod MM f8	Rod Thd KK	Thd Lg A	Port EE'' BSP	Dist LT	Clevis thk EP - 0.2	Bear thk EX	Bearing Dia CX - H7	Clevis Rad MS	Rod extn F	Tube od D	End port EP	Gland port GP	Total lg XO+Stroke
1	40	18	M14X1.5	18	3/8"	25	13	16	20	29	33	50	29	50	178
2	40	28	M20X1.5	28	3/8"	25	13	16	20	29	33	50	29	50	178
3	50	22	M16X1.5	22	1/2"	31	17	20	25	33	29	60	29	57	190
4	50	36	M27X2	36	1/2"	31	17	20	25	33	29	60	29	57	190
5	63	28	M20X1.5	28	1/2"	38	19	22	30	40	35	73+2	29	60	206
6	63	45	M33X2	45	1/2"	38	19	22	30	40	35	73+2	29	60	206
7	80	36	M27X2	36	3/4"	48	23	28	40	50	20	95	35	78	238
8	80	56	M42X2	56	3/4"	48	23	28	40	50	20	95	35	78	238
9	100	45	M33X2	45	3/4"	58	30	35	50	62	20	115	35	91	261
10	100	70	M48X2	63	3/4"	58	30	35	50	62	20	115	35	91	261
11	125	56	M42X2	56	1"	72	38	44	60	80	29	140+5	44	95	304
12	125	90	M64X3	85	1"	72	38	44	60	80	29	140+5	44	95	304
13	160	70	M48X2	63	1"	92	47	55	80	100	16	180+10	63	105	337
14	160	110	M80X3	95	1"	92	47	55	80	100	16	180+10	63	105	337

Rear clevis with Spherical Bearing  
ISO MP5 Mtg.



BOR DIA.	ø B				
ROD DIA.	ø MM				
STROKE	2000 mm				
MOUNTING	Rear Clevis With Sph. Bearing MP5 Mtg				
TYPE	Welded / Double Acting				
CUSHIONING	Both End Non Cushioned				
T.P.	210 kg/cm				
HYDRAULIC OIL	Mineral Oil ISO VG 32/46/68				
MAX SPEED	0.1 M/SEC.	REV.	ALTERATION	DATE	25-01-10

Drawn :-  
LOKESH

Approved :-  
G S Virdi

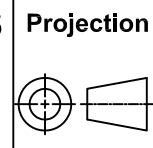
DATE :-  
25-01-10



**SIMRAN FLOWTECH INDUSTRIES**  
PLOT NO 174, SECTOR - 24,  
FARIDABAD - 121005

This drawing is the sole property of  
SIMRAN FLOWTECH INDUSTRIES and must not be copied  
or reproduced without written consent

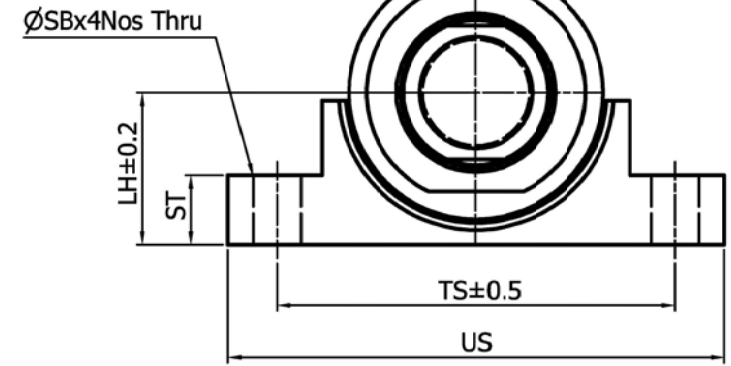
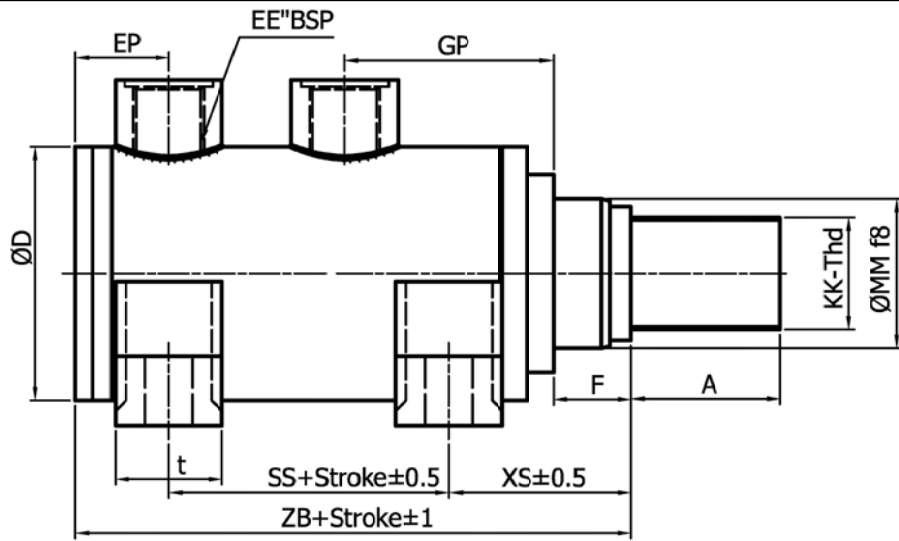
**Cylinder Type :-**  
**SF - WD - MP5**



Scale  
N.T.S

REV:  
00

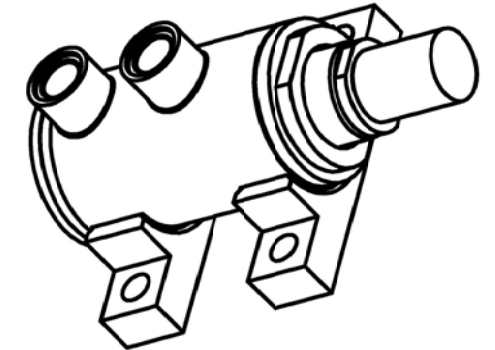




Ordering Code:- SF-WD-MS2-Bore x Rod x Stroke

Simran Flotech Std Foot Lug Mtg As per ISO MS2

Sl.No	Bore B H8	Rod MM f8	Rod Thd KK	Thd Lg A	Port EE'' BSP	Rod Extn F	Dist XS+/- 0.5	CCD SS+Stroke	CCD TS+/-0.5	Dist US	Centredist LH +/- 0.2	Legthk ST	Holedia SB	Leg Width t	TubeOD D	Gland Port GP	Endport EP	Total lg ZB+Stroke
1	40	18	M14X1.5	18	3/8"	23	45	98	83	103	31	12.5	11	24	50	50	29	167
2	40	28	M20X1.5	28	3/8"	23	45	98	83	103	31	12.5	11	24	50	50	29	167
3	50	22	M16X1.5	22	1/2"	25	54	92	102	127	37	19	14	30	60	57	29	173
4	50	36	M27X2	36	1/2"	25	54	92	102	127	37	19	14	30	60	57	29	173
5	63	28	M20X1.5	28	1/2"	31	65	86	124	161	44	26	18	36	73	60	29	181
6	63	45	M33X2	45	1/2"	31	65	86	124	161	44	26	18	36	73	60	29	181
7	80	36	M27X2	36	3/4"	29	68	105	149	186	57	26	18	40	95	78	35	208
8	80	56	M42X2	56	3/4"	29	68	105	149	186	57	26	18	40	95	78	35	208
9	100	45	M33X2	45	3/4"	37	79	102	172	216	63	32	26	48	115	91	35	220
10	100	70	M48X2	63	3/4"	37	79	102	172	216	63	32	26	48	115	91	35	220
11	125	56	M42X2	56	1"	34	79	131	210	254	82	32	26	50	137+8	95	44	253
12	125	90	M64X3	85	1"	34	79	131	210	254	82	32	26	50	137+8	95	44	253
13	160	70	M48X2	63	1"	34	86	130	260	318	101	38	33	60	180+10	105	63	289
14	160	110	M80X3	95	1"	34	86	130	260	318	101	38	33	60	180+10	105	63	289



Foot Lug Mtg. ISO MS2 Mtg.

BOR DIA.	Ø B			
ROD DIA.	Ø MM			
STROKE	2000 mm			
MOUNTING	Foot Lug ISO MS2 Mtg			
TYPE	Welded / Double Acting			
CUSHIONING	Both End Non Cushioned			
T.P.	210 kg/cm			
HYDRAULIC OIL	Mineral Oil ISO VG 32/46/68			
MAX SPEED	0.1 M/SEC.	REV.	ALTERATION	DATE

Drawn :-  
LOKESH

Approved :-  
G S Virdi

DATE :-  
25-01-10



**SIMRAN FLOWTECH INDUSTRIES**  
PLOT NO 174, SECTOR - 24,  
FARIDABAD - 121005

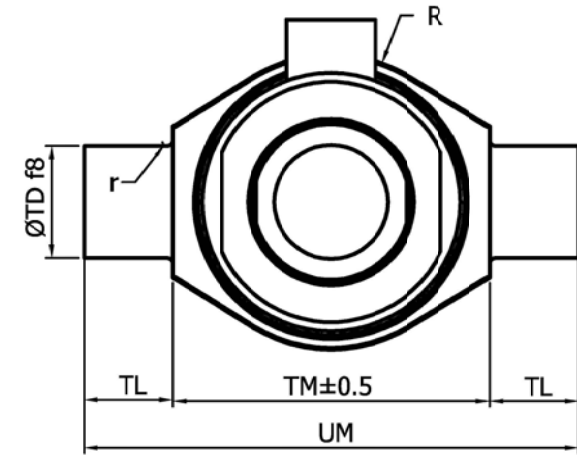
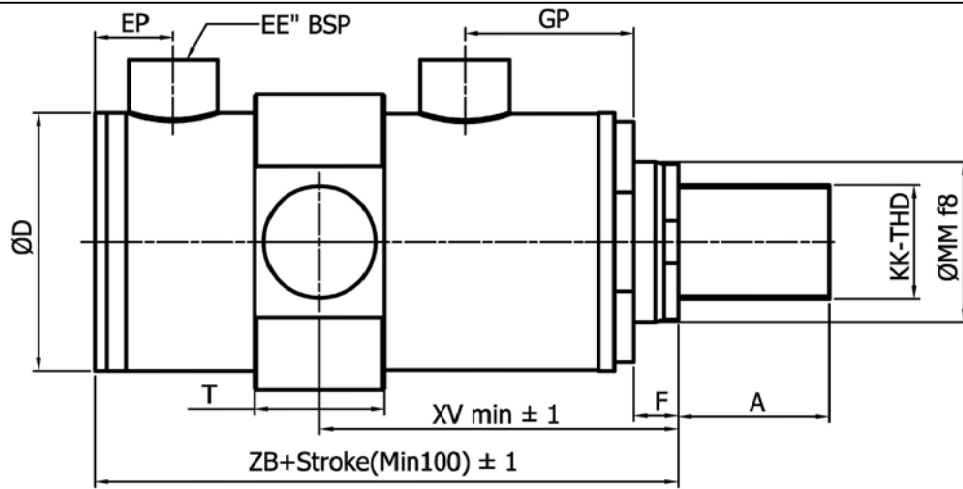
This drawing is the sole property of  
SIMRAN FLOWTECH INDUSTRIES and must not be copied  
or reproduced without written consent

**Cylinder Type :-**  
**SF - WD - MS2**

Projection

Scale  
N.T.S

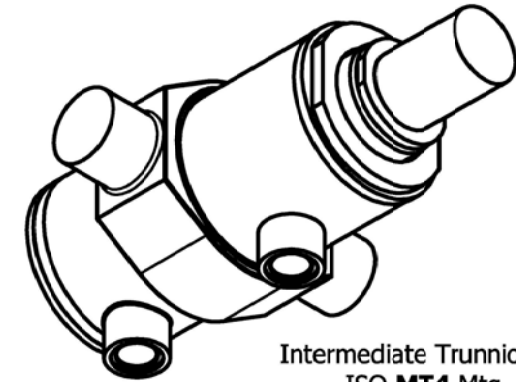
REV:  
00



Ordering Code:- SF-WD-MP4 -Bore x Rod x Stroke (Min.100 mm)  
 XV max = XV min + Stroke(Min100)

Simran Flotech Std Intermediate Trunnion Mtg. As per ISO MT4

Sl.No	Bore B H8	Rod MM f8	Rod Thd KK	Thd Lg A	Port EE" BSP	Trunnion					Rod Extn F	Tube OD D	Endport EP	Glandport GP	Trun. dist XV min	Total lg ZB	
						TM+/-0.5	UM	TL	TD f8	R							r
1	40	18	M14X1.5	18	3/8"	76	108	16	20	32	1.5	13	50	29	50	117	233
2	40	28	M20X1.5	28	3/8"	76	108	16	20	32	1.5	13	50	29	50	117	233
3	50	22	M16X1.5	22	1/2"	89	129	20	25	38	1.5	16	60	29	57	127	246
4	50	36	M27X2	36	1/2"	89	129	20	25	38	1.5	16	60	29	57	127	246
5	63	28	M20X1.5	28	1/2"	100	150	25	32	45	2	19	73+2	29	60	146	252
6	63	45	M33X2	45	1/2"	100	150	25	32	45	2	19	73+2	29	60	146	252
7	80	36	M27X2	36	3/4"	127	191	32	40	57	2.5	22	95	35	78	163	292
8	80	56	M42X2	56	3/4"	127	191	32	40	57	2.5	22	95	35	78	163	292
9	100	45	M33X2	45	3/4"	140	220	40	50	64	2.5	25	115	35	91	186	308
10	100	70	M48X2	63	3/4"	140	220	40	50	64	2.5	25	115	35	91	186	308
11	125	56	M42X2	56	1"	178	278	50	63	83	3	25	140+5	44	95	202	328
12	125	90	M64X3	85	1"	178	278	50	63	83	3	25	140+5	44	95	202	328
13	160	70	M48X2	63	1"	215	341	63	80	102	3	25	180+10	63	105	224	380
14	160	110	M80X3	95	1"	215	341	63	80	102	3	25	180+10	63	105	224	380



Intermediate Trunnion Mtg.  
ISO MT4 Mtg.

BOR DIA.	Ø B				
ROD DIA.	Ø MM				
STROKE	2000 mm				
MOUNTING	Intermediate Trunnion ISO MT4 Mtg				
TYPE	Welded / Double Acting				
CUSHIONING	Both End Non Cushioned				
T.P.	210 kg/cm				
HYDRAULIC OIL	Mineral Oil ISO VG 32/46/68				
MAX SPEED	0.1 M/SEC.	REV.	ALTERATION	DATE	25-01-10

Drawn :-  
LOKESH

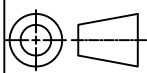
Approved :-  
G S Virdi

DATE :-



**SIMRAN FLOWTECH INDUSTRIES**  
 PLOT NO 174, SECTOR - 24,  
 FARIDABAD - 121005

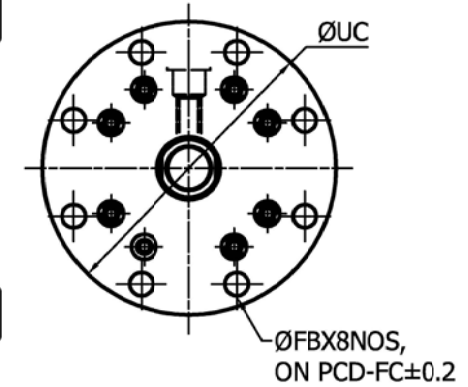
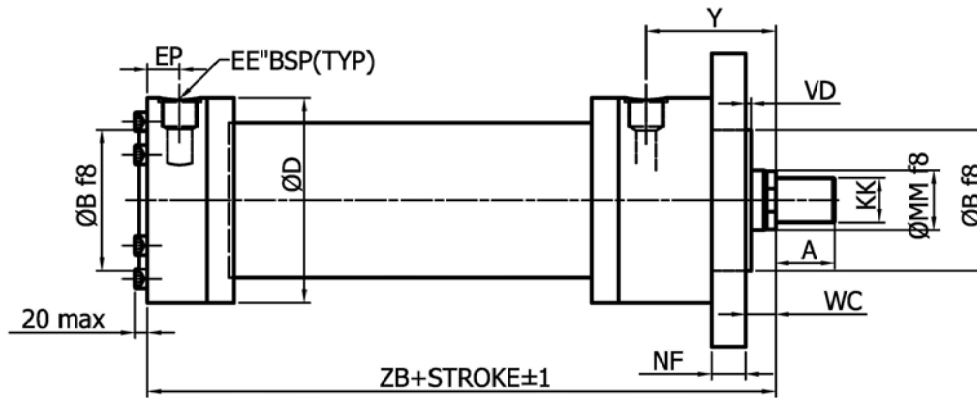
This drawing is the sole property of  
 SIMRAN FLOWTECH INDUSTRIES and must not be copied  
 or reproduced without written consent

Projection  
  
 Scale  
 N.T.S

Cylinder Type :-  
**SF - WD - MT4**

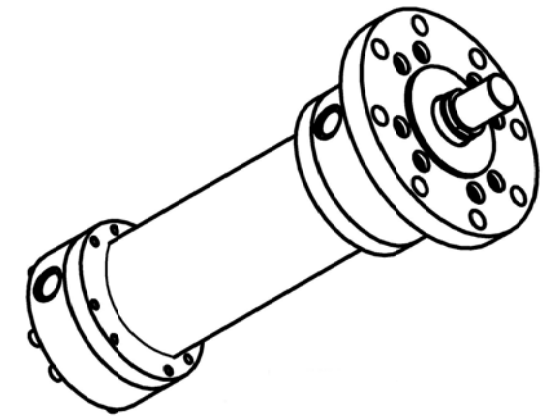
REV:  
**00**





Ordering Code:- SF-MD-MF3-Bore x Rod x Stroke

Simran Flotech Millduty Std Front Circular Flange Mtg As Per ISO 6020-1 MF3 Mtg																
Sl.No	Bore dia	Rod Dia	Rod Thd	Thd Lg	Port	Spicot OD	Dist	Spicot	Mtg Hole Pcd	Mtg Hole	Flange	End Port	Gland Port	Cyl.OD	Total Lg	
	B H8	MM f8	KK	A	EE''BSP	B f8	WC	Width VD	øFC ± 0.2	FB	UC	NF	EP	Y	øD	ZB
1	32	18	M14X1.5	18	3/8"	40	16	3	92	9	110	16	17	64	67	170
2	32	22	M16X1.5	22	3/8"	40	16	3	92	9	110	16	17	64	67	170
3	40	22	M16X1.5	22	1/2"	50	16	3	106	9	125	16	22	71	78	190
4	40	28	M20X1.5	28	1/2"	50	16	3	106	9	125	16	22	71	78	190
5	50	28	M20X1.5	28	1/2"	60	18	4	126	11	150	20	22	72	95	205
6	50	36	M27X2	36	1/2"	60	18	4	126	11	150	20	22	72	95	205
7	63	36	M27X2	36	3/4"	70	20	4	145	13.5	170	25	25	82	116	224
8	63	45	M33X2	45	3/4"	70	20	4	145	13.5	170	25	25	82	116	224
9	80	45	M33X2	45	3/4"	85	22	4	165	17.5	195	32	25	91	130	250
10	80	56	M42X2	56	3/4"	85	22	4	165	17.5	195	32	25	91	130	250
11	100	56	M42X2	56	1"	106	25	5	200	22	240	32	30	108	158	300
12	100	70	M48X2	63	1"	106	25	5	200	22	240	32	30	108	158	300
13	125	70	M48X2	63	1"	132	28	5	235	22	275	32	30	121	192	325
14	125	90	M64X3	85	1"	132	28	5	235	22	275	32	30	121	192	325
15	160	90	M64X3	85	1 1/4"	160	30	5	280	22	320	36	36	143	238	370
16	160	110	M80X3	95	1 1/4"	160	30	5	280	22	320	36	36	143	238	370
17	200	110	M80X3	95	1 1/4"	200	35	5	340	26	385	40	36	190	285	450
18	200	140	M100X3	112	1 1/4"	200	35	5	340	26	385	40	36	190	285	450
19	250	140	M100X3	112	1 1/2"	250	40	8	420	33	490	56	40	210	365	550
20	250	180	M125X4	125	1 1/2"	250	40	8	420	33	490	56	40	210	365	550



Ordering Code:- SF-MD-MF3  
Front Circular Flange Mtg.

BOR DIA.	ø B				
ROD DIA.	ø MM				
STROKE	2000 mm				
MOUNTING	Front Circular Flange MF3 Mtg.				
TYPE	Welded / Double Acting				
CUSHIONING	Both End Non Cushioned				
T.P.	210 kg/cm				
HYDRAULIC OIL	Mineral Oil ISO VG 32/46/68				
MAX SPEED	0.1 M/SEC.	REV.	ALTERATION	DATE	25-01-10

Drawn :-  
LOKESH

Approved :-  
G S Virdi

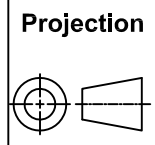
DATE :-



**SIMRAN FLOWTECH INDUSTRIES**  
PLOT NO 174, SECTOR - 24,  
FARIDABAD - 121005

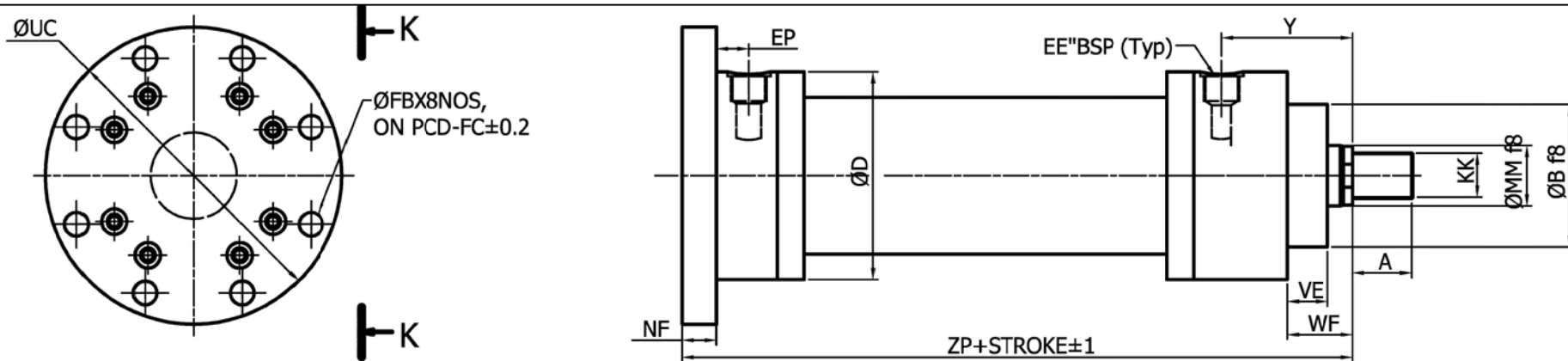
This drawing is the sole property of  
SIMRAN FLOWTECH INDUSTRIES and must not be copied  
or reproduced without written consent

**Cylinder Type :-**  
**SF - MD - MF3**



**Scale**  
**N.T.S**

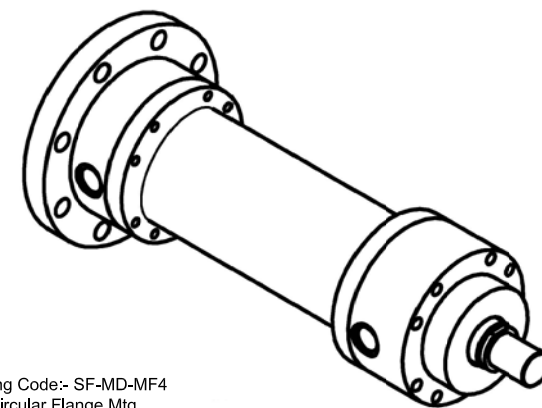
**REV:**  
**00**



Simran Flotech Millduty Std Rear Cir. Flange Mtg As per ISO 6020-1 MF4 Mtg

Sl.No	Bore dia B H8	Rod Dia MM f8	Rod Thd KK	Thd Lg A	Port EE" BSP	Spicot OD B f8	Dist WF	Spicot Lg VE	Mtg Hole Pcd øFC ± 0.2	Mtg Hole FB	Flange UC NF	End Port EP	Gland Port Y	Cyl.OD øD	Total Lg ZP	
1	32	18	M14X1.5	18	3/8"	40	32	19	92	9	110	16	17	64	67	186
2	32	22	M16X1.5	22	3/8"	40	32	19	92	9	110	16	17	64	67	186
3	40	22	M16X1.5	22	1/2"	50	32	19	106	9	125	16	22	71	78	206
4	40	28	M20X1.5	28	1/2"	50	32	19	106	9	125	16	22	71	78	206
5	50	28	M20X1.5	28	1/2"	60	38	24	126	11	150	20	22	72	95	225
6	50	36	M27X2	36	1/2"	60	38	24	126	11	150	20	22	72	95	225
7	63	36	M27X2	36	3/4"	70	45	29	145	13.5	170	25	25	82	116	249
8	63	45	M33X2	45	3/4"	70	45	29	145	13.5	170	25	25	82	116	249
9	80	45	M33X2	45	3/4"	85	54	36	165	17.5	195	32	25	91	130	282
10	80	56	M42X2	56	3/4"	85	54	36	165	17.5	195	32	25	91	130	282
11	100	56	M42X2	56	1"	106	57	37	200	22	240	32	30	108	158	332
12	100	70	M48X2	63	1"	106	57	37	200	22	240	32	30	108	158	332
13	125	70	M48X2	63	1"	132	60	37	235	22	275	32	30	121	192	357
14	125	90	M64X3	85	1"	132	60	37	235	22	275	32	30	121	192	357
15	160	90	M64X3	85	1 1/4"	160	66	41	280	22	320	36	36	143	238	406
16	160	110	M80X3	95	1 1/4"	160	66	41	280	22	320	36	36	143	238	406
17	200	110	M80X3	95	1 1/4"	200	75	45	340	26	385	40	36	190	285	490
18	200	140	M100X3	112	1 1/4"	200	75	45	340	26	385	40	36	190	285	490
19	250	140	M100X3	112	1 1/2"	250	96	64	420	33	490	56	40	210	365	606
20	250	180	M125X4	125	1 1/2"	250	96	64	420	33	490	56	40	210	365	606

Ordering Code:- SF-MD-MF4-Bore x Rod x Stroke



Ordering Code:- SF-MD-MF4 Rear Circular Flange Mtg.

BOR DIA.	ø B			
ROD DIA.	ø MM			
STROKE	2000 mm			
MOUNTING	Rear Circular Flange MF4 Mtg			
TYPE	Welded / Double Acting			
CUSHIONING	Both End Non Cushioned			
T.P.	210 kg/cm			
HYDRAULIC OIL	Mineral Oil ISO VG 32/46/68			
MAX SPEED	0.1 M/SEC.	REV.	ALTERATION	DATE

Drawn :-  
LOKESH

Approved :-  
G S Virdi

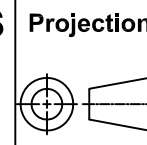
DATE :-  
25-01-10



**SIMRAN FLOWTECH INDUSTRIES**  
PLOT NO 174, SECTOR - 24,  
FARIDABAD - 121005

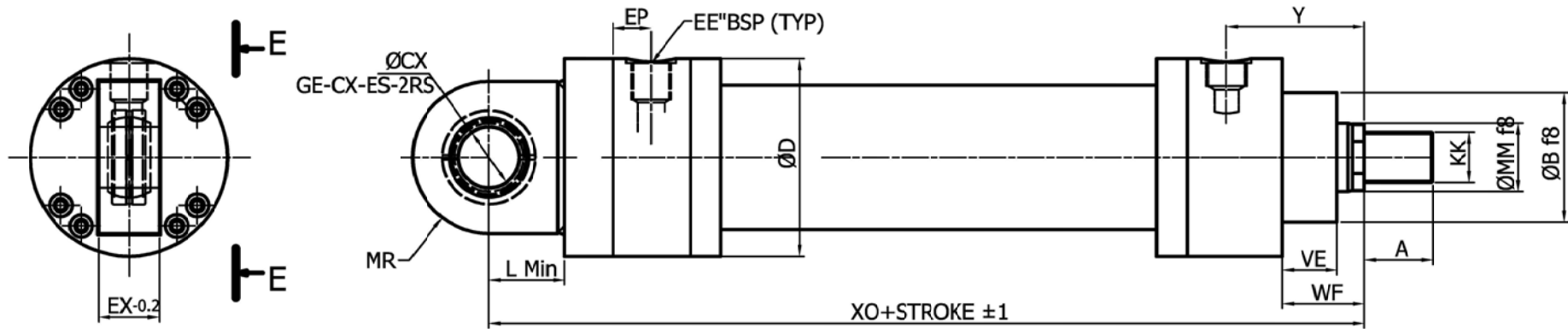
This drawing is the sole property of  
SIMRAN FLOWTECH INDUSTRIES and must not be copied  
or reproduced without written consent

**Cylinder Type :-**  
**SF - MD - MF4**



Scale  
N.T.S

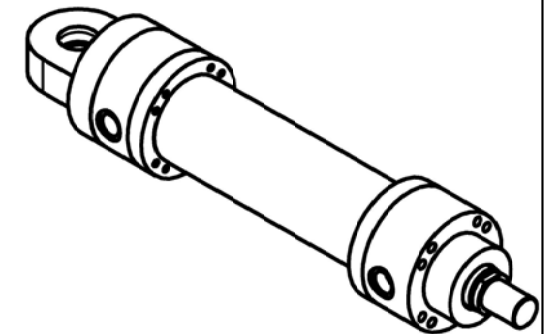
REV:  
00



Simran Flotech Std Circular Rear Flange Mtg As per ISO 6020-1 MF4 Mtg.

Sl.No	Bore dia B H8	Rod Dia MM f8	Rod Thd KK	Thd Lg A	Port EE''BSP	Spicoot OD B f8	Dist WF	Spicoot Lg VE	Clevis Dist L min	Bearing Dia CX	Clevis Rad MR	Clevis Thk EX-0.2	End Port EP	Gland Port Y	Cyl.OD ØD	Total Lg XO
1	32	18	M14X1.5	18	3/8"	40	32	19	20	16	20	16	17	64	67	206
2	32	22	M16X1.5	22	3/8"	40	32	19	20	16	20	16	17	64	67	206
3	40	22	M16X1.5	22	1/2"	50	32	19	25	20	25	20	22	71	78	231
4	40	28	M20X1.5	28	1/2"	50	32	19	25	20	25	20	22	71	78	231
5	50	28	M20X1.5	28	1/2"	60	38	24	32	25	32	25	22	72	95	257
6	50	36	M27X2	36	1/2"	60	38	24	32	25	32	25	22	72	95	257
7	63	36	M27X2	36	3/4"	70	45	29	40	32	40	32	25	82	116	289
8	63	45	M33X2	45	3/4"	70	45	29	40	32	40	32	25	82	116	289
9	80	45	M33X2	45	3/4"	85	54	36	50	40	50	40	25	91	130	332
10	80	56	M42X2	56	3/4"	85	54	36	50	40	50	40	25	91	130	332
11	100	56	M42X2	56	1"	106	57	37	63	50	63	50	30	103	158	395
12	100	70	M48X2	63	1"	106	57	37	63	50	63	50	30	103	158	395
13	125	70	M48X2	63	1"	132	60	37	71	63	71	63	30	121	192	428
14	125	90	M64X3	85	1"	132	60	37	71	63	71	63	30	121	192	428
15	160	90	M64X3	85	1 1/4"	160	66	41	90	80	90	80	36	143	238	505
16	160	110	M80X3	95	1 1/4"	160	66	41	90	80	90	80	36	143	238	505
17	200	110	M80X3	95	1 1/4"	200	75	45	112	100	112	100	36	190	285	615
18	200	140	M100X3	112	1 1/4"	200	75	45	112	100	112	100	36	190	285	615
19	250	140	M100X3	112	1 1/2"	250	96	64	160	125	160	125	40	210	365	773
20	250	180	M125X4	125	1 1/2"	250	96	64	160	125	160	125	40	210	365	773

Ordering Code:- SF-MD-MP6-Bore x Rod x Stroke



Ordering Code:- SF-MD-MP6  
Rear Detachable Male  
Clevis With Sph. Bearing

BOR DIA.	Ø B			
ROD DIA.	Ø MM			
STROKE	2000 mm			
MOUNTING	Rear Male Clevis With Sph. Bearing MP6 Mtg			
TYPE	Welded / Double Acting			
CUSHIONING	Both End Non Cushioned			
T.P.	210 kg/cm			
HYDRAULIC OIL	Mineral Oil ISO VG 32/46/68			
MAX SPEED	0.1 M/SEC.	REV.	ALTERATION	DATE

Drawn :-  
LOKESH

Approved :-  
G S Virdi

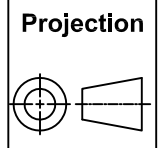
DATE :-  
25-01-10



**SIMRAN FLOWTECH INDUSTRIES**  
PLOT NO 174, SECTOR - 24,  
FARIDABAD - 121005

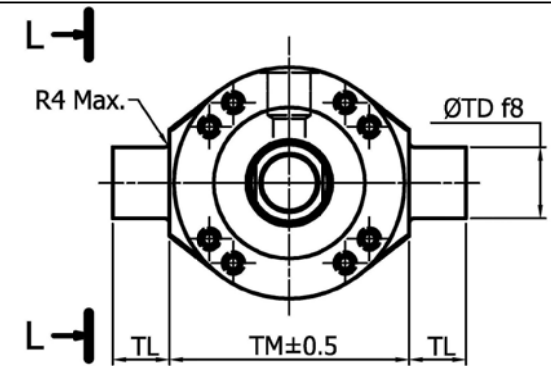
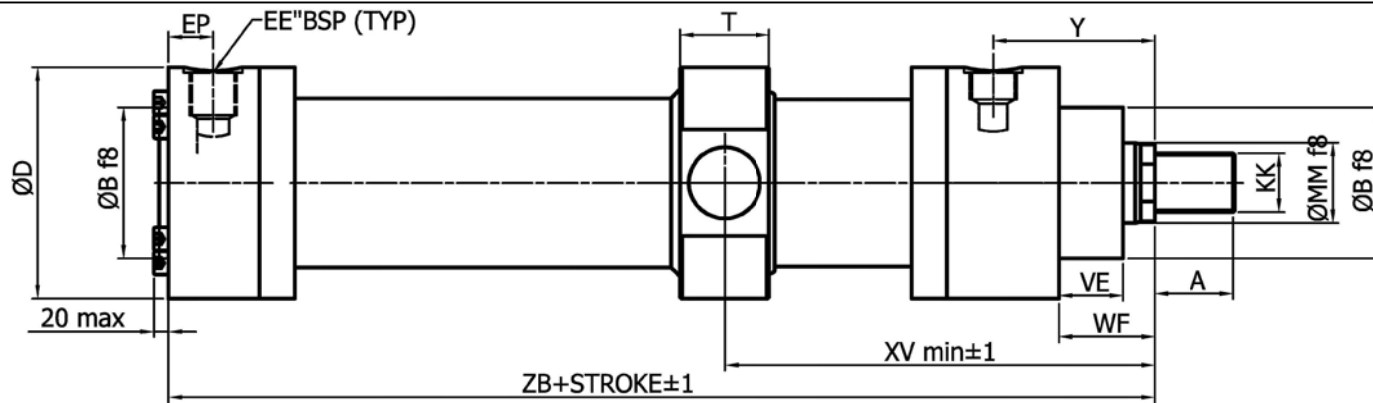
This drawing is the sole property of  
SIMRAN FLOWTECH INDUSTRIES and must not be copied  
or reproduced without written consent

**Cylinder Type :-**  
**SF - MD - MP6**



**Scale**  
**N.T.S**

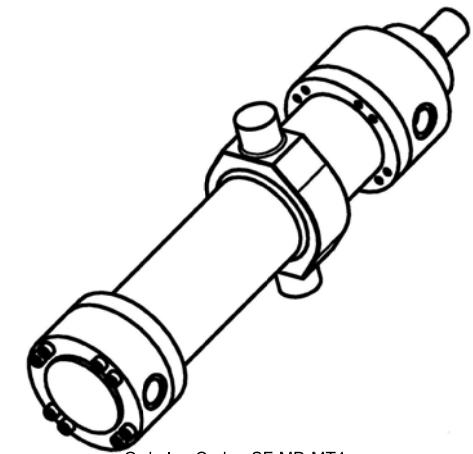
**REV:**  
**00**



Ordering Code:- SF-MD-MT4-Bore x Rod x Stroke  
 Min. Stroke Reqd. 100 mm  
 Indicate Dist XV While Ordering

Simran Flotech Std Intermediate Trunnion Mtg As Per ISO 6020-1 MT4 Mtg

Sl.No	Bore dia	Rod Dia	Rod Thd	Thd Lg	Port	Spicot OD	Dist	Spicot Lg	Trunnion Mtg. Detail				End Port	Gland Port	Cyl.OD	Trunnion Dist	Total Lg
	B H8	MM f8	KK	A	EE''BSP	B f8	WF	VE	TM±0.5	TL	ØTD f8	T	EP	Y	øD	XV±1	ZB
1	32	18	M14X1.5	18	3/8"	40	32	19	75	12	16	26	17	64	67	155	170
2	32	22	M16X1.5	22	3/8"	40	32	19	75	12	16	26	17	64	67	155	170
3	40	22	M16X1.5	22	1/2"	50	32	19	90	16	20	30	22	71	78	170	190
4	40	28	M20X1.5	28	1/2"	50	32	19	90	16	20	30	22	71	78	170	190
5	50	28	M20X1.5	28	1/2"	60	38	24	105	20	25	35	22	72	95	175	205
6	50	36	M27X2	36	1/2"	60	38	24	105	20	25	35	22	72	95	175	205
7	63	36	M27X2	36	3/4"	70	45	29	120	25	32	42	25	82	116	195	224
8	63	45	M33X2	45	3/4"	70	45	29	120	25	32	42	25	82	116	195	224
9	80	45	M33X2	45	3/4"	85	54	36	135	32	40	50	25	91	130	210	250
10	80	56	M42X2	56	3/4"	85	54	36	135	32	40	50	25	91	130	210	250
11	100	56	M42X2	56	1"	106	57	37	160	40	50	60	30	108	158	240	300
12	100	70	M48X2	63	1"	106	57	37	160	40	50	60	30	108	158	240	300
13	125	70	M48X2	63	1"	132	60	37	195	50	63	73	30	121	192	260	325
14	125	90	M64X3	85	1"	132	60	37	195	50	63	73	30	121	192	260	325
15	160	90	M64X3	85	1 1/4"	160	66	41	240	63	80	90	36	143	238	305	370
16	160	110	M80X3	95	1 1/4"	160	66	41	240	63	80	90	36	143	238	305	370
17	200	110	M80X3	95	1 1/4"	200	75	45	295	80	100	110	36	190	285	365	450
18	200	140	M100X3	112	1 1/4"	200	75	45	295	80	100	110	36	190	285	365	450
19	250	140	M100X3	112	1 1/2"	250	96	64	370	100	125	135	40	210	365	410	550
20	250	180	M125X4	125	1 1/2"	250	96	64	370	100	125	135	40	210	365	410	550



Ordering Code:- SF-MD-MT4  
 Intermediate Trunnion Mtg.

BOR DIA.	ø B			
ROD DIA.	ø MM			
STROKE	2000 mm			
MOUNTING	Intermediate Trunnion MT4 Mtg			
TYPE	Welded / Double Acting			
CUSHIONING	Both End Non Cushioned			
T.P.	210 kg/cm			
HYDRAULIC OIL	Mineral Oil ISO VG 32/46/68			
MAX SPEED	0.1 M/SEC.	REV.	ALTERATION	DATE

Drawn :-  
 LOKESH

Approved :-  
 G S Virdi

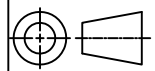
DATE :-  
 25-01-10



**SIMRAN FLOWTECH INDUSTRIES**  
**PLOT NO 174, SECTOR - 24,**  
**FARIDABAD - 121005**

This drawing is the sole property of  
 SIMRAN FLOWTECH INDUSTRIES and must not be copied  
 or reproduced without written consent

Projection



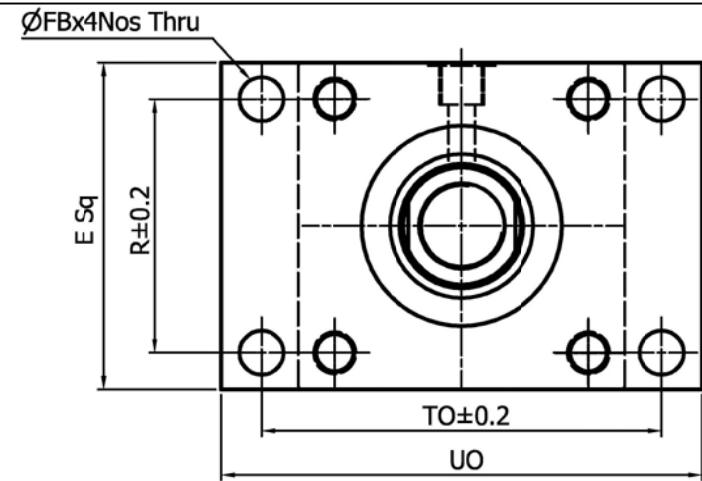
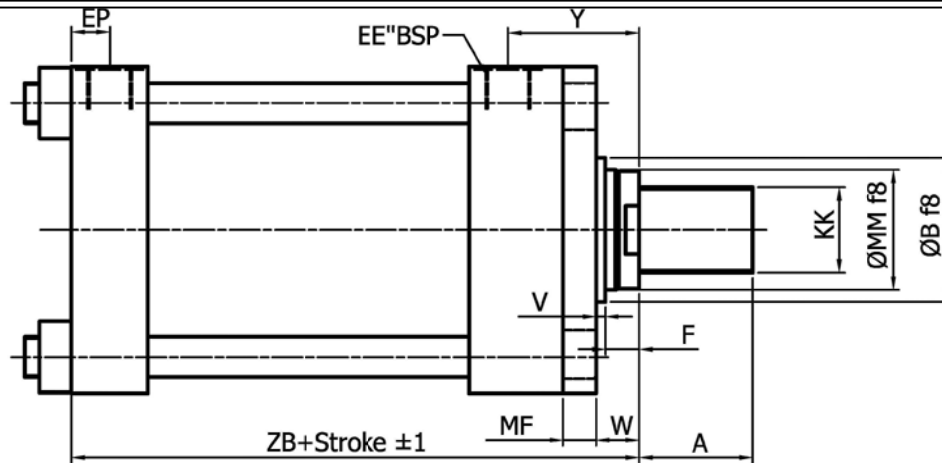
Scale

N.T.S

**Cylinder Type :-**  
**SF - MD - MT4**

REV:  
 00

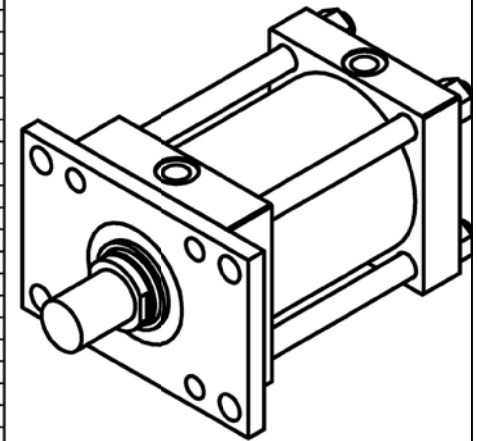




Ordering Code:- SF-TT-ME5-Bore x Rod x Stroke

Simran Flotech Std Tie Rod Type Cyl. As per ISO ME5 Mtg

Sl.No	Bore Dia B H8	Rod dia MM f8	RodThd KK	Thd Lg A	Port EE''BSP	Block E Sq	Sq-CCD R+/-0.2	Sq-CCD TO+/-0.2	Mtg hole FB H13	FlangeLg UO	FlangethK MF	SpicotOD B f8	SpicotLg V	Rod Extn F	GlandPort Y	EndPort EP	Dist W	Total Lg ZB+Stroke
1	40	18	M14X1.5	18	3/8"	63	41	87	11	110	10	30	12	13	62	12	25	167
2	40	28	M20X1.5	28	3/8"	63	41	87	11	110	10	42	12	13	62	12	25	167
3	50	22	M16X1.5	22	1/2"	75	52	105	14	130	16	34	9	16	67	14	25	180
4	50	36	M27X2	36	1/2"	75	52	105	14	130	16	50	9	16	67	14	25	180
5	63	28	M20X1.5	28	1/2"	90	65	117	14	145	16	42	13	19	71	14	32	184
6	63	45	M33X2	45	1/2"	90	65	117	14	145	16	60	13	19	71	14	32	184
7	80	36	M27X2	36	3/4"	115	83	149	18	180	20	50	9	22	77	17	31	205
8	80	56	M42X2	56	3/4"	115	83	149	18	180	20	72	9	22	77	17	31	205
9	100	45	M33X2	45	3/4"	130	97	162	18	200	22	60	10	25	82	17	35	210
10	100	70	M48X2	63	3/4"	130	97	162	18	200	22	88	10	25	82	17	35	210
11	125	56	M42X2	56	1"	165	126	208	22	250	22	72	10	25	86	21	35	229
12	125	90	M64X3	85	1"	165	126	208	22	250	22	108	10	25	86	21	35	229
13	160	70	M48X2	63	1"	205	155	253	26	300	25	88	7	25	86	21	32	256
14	160	110	M80X3	95	1"	205	155	253	26	300	25	133	7	25	86	21	32	256
15	200	90	M64X3	85	1 1/4"	245	190	300	33	360	25	108	7	25	98	26	32	293
16	200	140	M100x3	112	1 1/4"	245	190	300	33	360	25	163	7	25	98	26	32	293



Front Flange Mtg.  
ISO MF1 Mtg.

BOR DIA.	Ø B				
ROD DIA.	Ø MM				
STROKE	2000 mm				
MOUNTING	Front Rectongular Flange ISO ME5 Mtg				
TYPE	Welded / Double Acting				
CUSHIONING	Both End Non Cushioned				
T.P.	210 kg/cm				
HYDRAULIC OIL	Mineral Oil ISO VG 32/46/68				
MAX SPEED	0.1 M/SEC.	REV.	ALTERATION	DATE	25-01-10

Drawn :-  
LOKESH

Approved :-  
G S Virdi

DATE :-



**SIMRAN FLOWTECH INDUSTRIES**  
PLOT NO 174, SECTOR - 24,  
FARIDABAD - 121005

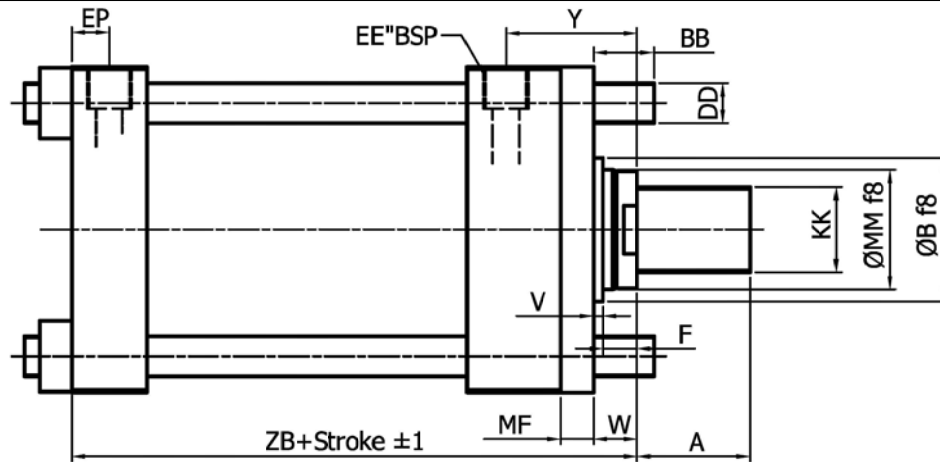
This drawing is the sole property of  
SIMRAN FLOWTECH INDUSTRIES and must not be copied  
or reproduced without written consent

**Cylinder Type :-**  
**SF - TT - MF1**

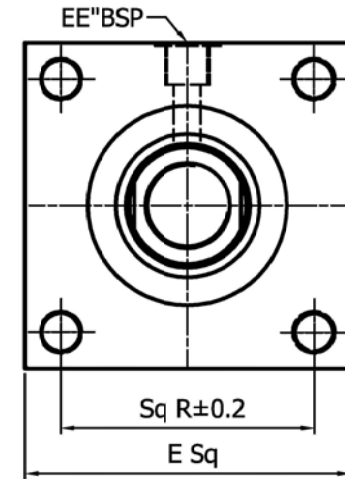
Projection  
Scale  
N.T.S

REV:  
00

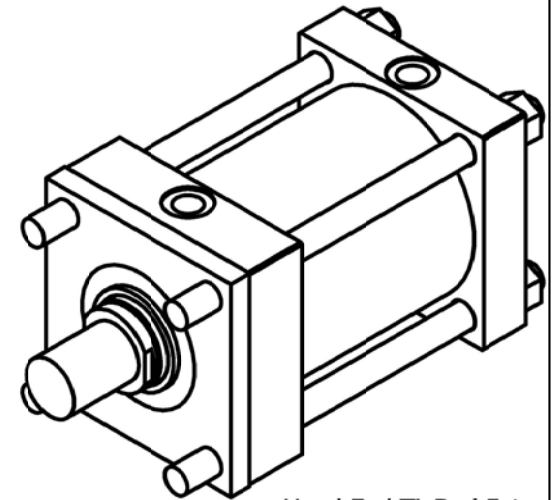




Ordering Code:- SF-TT - MX3 - Bore x Rod x Stroke



Simran Flotech Std Rect. Tie Rod Mtg As per ISO 6020-2																		
Sl.No	Bore Dia B H8	Rod dia MM f8	RodThd KK	Thd Lg A	Port EE''BSP	Block E Sq	Sq-CCD R+/-0.2	Flangethk MF	SpicoOD B f8	SpicoLg V	Rod Extn F	TierodDia DD	TierodLg BB	GlandPort Y	EndPort EP	Dist W	Total lg ZB	
1	40	18	M14X1.5	18	3/8"	63	41	10	30	12	13	M8X1	35	62	12	25	167	
2	40	28	M20X1.5	28	3/8"	63	41	10	42	12	13	M8X1	35	62	12	25	167	
3	50	22	M16X1.5	22	1/2"	75	52	16	34	9	16	M12X1.25	46	67	14	25	180	
4	50	36	M27X2	36	1/2"	75	52	16	50	9	16	M12X1.25	46	67	14	25	180	
5	63	28	M20X1.5	28	1/2"	90	65	16	42	13	19	M12X1.25	46	71	14	32	184	
6	63	45	M33X2	45	1/2"	90	65	16	60	13	19	M12X1.25	46	71	14	32	184	
7	80	36	M27X2	36	3/4"	115	83	20	50	9	22	M16X1.5	59	77	17	31	205	
8	80	56	M42X2	56	3/4"	115	83	20	72	9	22	M16X1.5	59	77	17	31	205	
9	100	45	M33X2	45	3/4"	130	97	22	60	10	25	M16X1.5	59	82	17	35	210	
10	100	70	M48X2	63	3/4"	130	97	22	88	10	25	M16X1.5	59	82	17	35	210	
11	125	56	M42X2	56	1"	165	126	22	72	10	25	M22X1.5	81	86	21	35	229	
12	125	90	M64X3	85	1"	165	126	22	108	10	25	M22X1.5	81	86	21	35	229	
13	160	70	M48X2	63	1"	205	155	25	88	7	25	M27X2	92	86	21	32	256	
14	160	110	M80X3	95	1"	205	155	25	133	7	25	M27X2	92	86	21	32	256	
15	200	90	M64X3	85	1 1/4"	245	190	25	108	7	25	M30X2	115	98	26	32	293	
16	200	140	M100x3	112	1 1/4"	245	190	25	163	7	25	M30X2	115	98	26	32	293	



Head End TieRod Extn.  
ISO MX3 Mtg.

BOR DIA.	ø B			
ROD DIA.	ø MM			
STROKE	2000 mm			
MOUNTING	Head End Tie Rod Extension ISO MX3 Mtg			
TYPE	Welded / Double Acting			
CUSHIONING	Both End Non Cushioned			
T.P.	210 kg/cm			
HYDRAULIC OIL	Mineral Oil ISO VG 32/46/68			
MAX SPEED	0.1 M/SEC.	REV.	ALTERATION	DATE

Drawn :-  
LOKESH

Approved :-  
G S Virdi

DATE :-  
25-01-10



**SIMRAN FLOWTECH INDUSTRIES**  
PLOT NO 174, SECTOR - 24,  
FARIDABAD - 121005

This drawing is the sole property of  
SIMRAN FLOWTECH INDUSTRIES and must not be copied  
or reproduced without written consent

**Cylinder Type :-**  
**SF - TT - MX3**

Projection  
Scale  
N.T.S

REV:  
00



**“Simran Flowtech Industries”** is a leading engineering company involved in the business of manufacturing of Hydraulic Cylinders, Special Valves, Pipeline Accessories and Auto Components, has set new bench mark in the industry with its quality products

#### **AN INTRODUCTION....**

Since our inception we have been engaged in the filed of manufacturing and exporting of highly precision and quality products. All the products are engineering to meet the specifications of our clients to maximize their satisfaction. Streamlined production process, comprehensive quality management and marketing team are the mainstay of our company’s progress...

#### **OUR PRODUCT LINE...**

We are making indefatigable efforts to come out with high quality products that are engineered as per our client’s requirements.

#### **OUR EXCELLENCE...**

Quality is of paramount importance to us and we are constantly elevating our standards of excellence by offering better quality products and services. We try to fill the need gaps of our clients by offering customized products and quality services to maximize their satisfaction. Quality is cautiously nurtured at every stage of manufacturing. From conception to delivery, every product undergoes several quality tests. Our team of engineers maintains a strict vigil on the manufacturing process to ensure that all the products are flawless.

#### **OUR FACILITIES...**

We boast of excellent production facilities, which help in manufacturing high quality products. Our production operations enable us to deliver volume orders on time, while stringent management principles maintain our product standards at world-class levels. We are constantly updating ourselves on the changing technological trends to face the global challenges. Our team of engineers is engaged in the fast and efficient production of high precision products.

#### **QUALITY POLICY...**

To manufacture and supply products meeting customer’s desired and implied expectations and of International quality by way of continuous improvement in design, material and process.

To build and create a team of highly specialized and motivated professionals through regular on job training to achieve and maintain international level product quality.

#### **OUR PATRONS...**

We are serving a large list of satisfied and loyal clients all across nation and also abroad who vouch for the quality of our products.

### ***SIMRAN FLOWTECH INDUSTRIES***

***Plot # 174, Sector -24, Industrial Area Faridabad 121005***

***Mobile : 9818247353 Telefax : 91-129-4028353***

***simranflowtech@hotmail.com, www.simranflowtech.in***



**ISO 9001-2000**