



Soluble Salt Vitrified Tiles

600x600mm

VARNI TILES

🏠 National Highway-8A
At. Lalpar Morbi-363642 (Guj.) INDIA

☎ +91 8849796355 | +91 7600664715

✉ info@varnitiles.com | export@varnitiles.com

🌐 www.varnitiles.com



PRODUCT INDEX

600x600mm

Polished
Series | Page 01-09

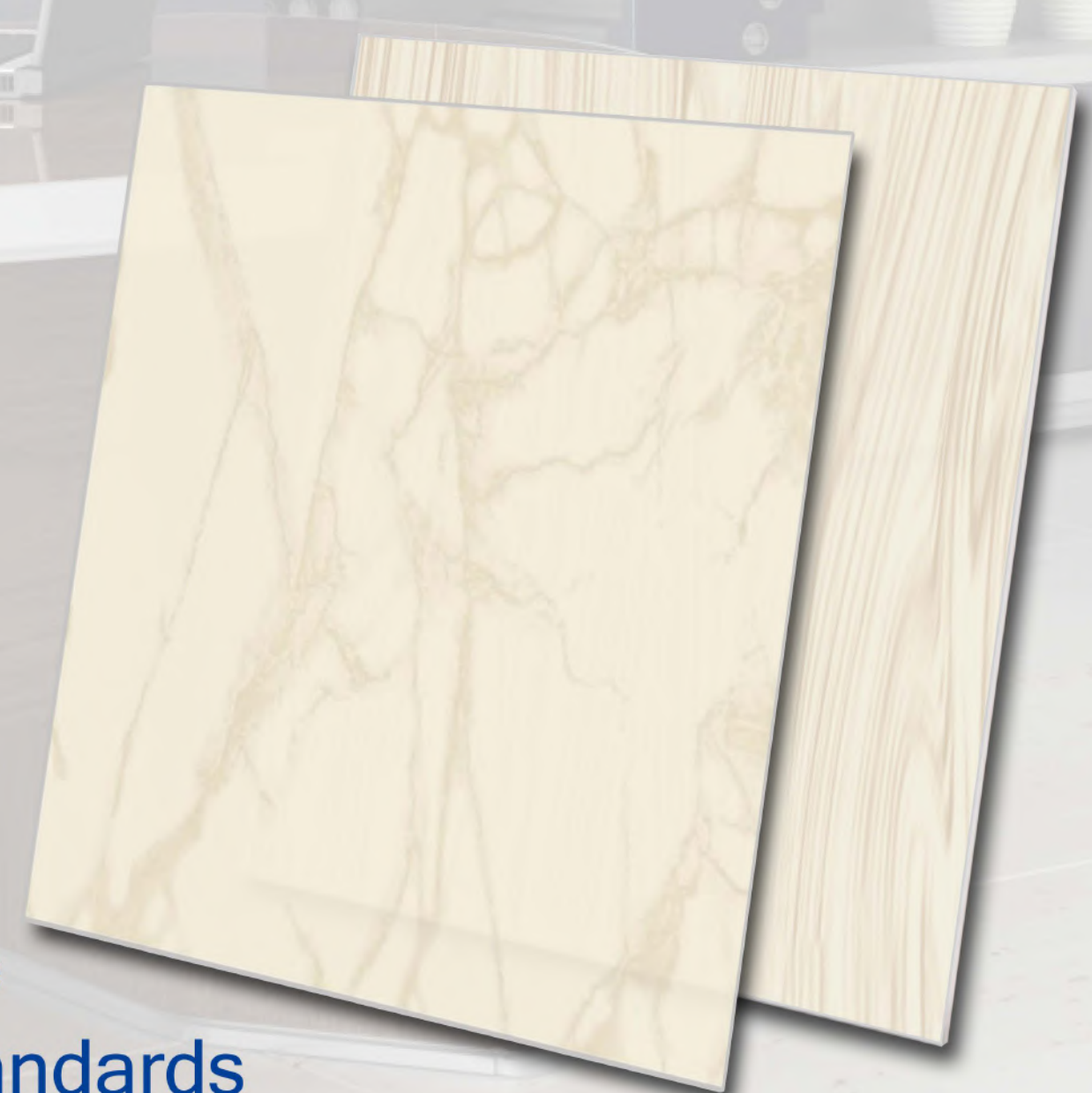
"Dreams pass into the reality of action. From the actions stems the dream again; and this interdependence produces the highest form of living."

Welcome to the World of "VARNI" that not only enhance your interiors, but also soothes your imagination and living Standards. We are perfect merger of technology, performance, functionality and aesthetic appeal. Right from the very start, VARNI was strongly motivated towards its connotation as an innovative company, with high technological content and forward-looking vision.

Products are 100% "Made in INDIA" and manufactured in complete respect of people and the environment, for the most varied destinations of use in every single corner of the globe. VARNI has endeavored to adorn homes with delight, exuberance and vivaciousness resounding with the quality, strength and life of its products.

The customers tastes and preferences change at a very fast pace. Hence, we continue to innovate and bring fresh new designs to cater to the market. So come indulge in the aura of these unique appealing designs.

we **Increase**
your Living **Standards**

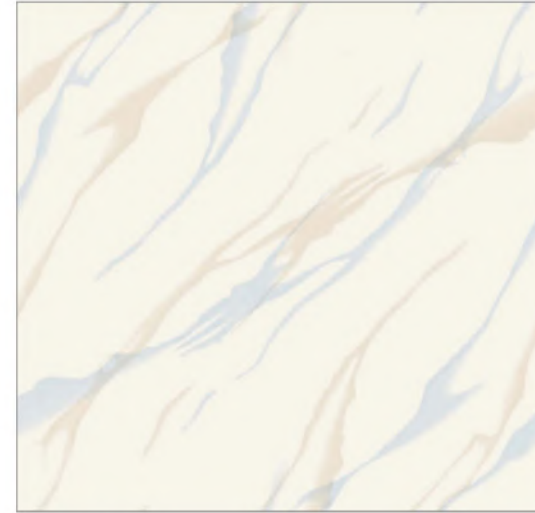




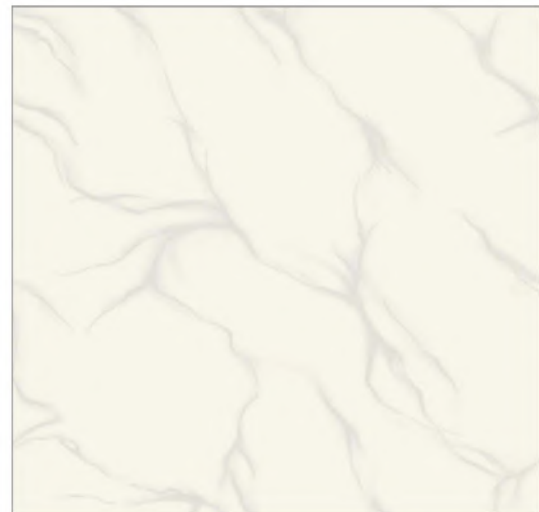
NT - 1001



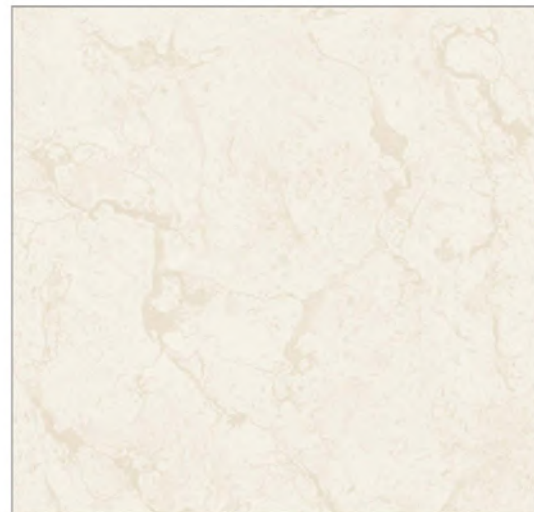
NT - 1002



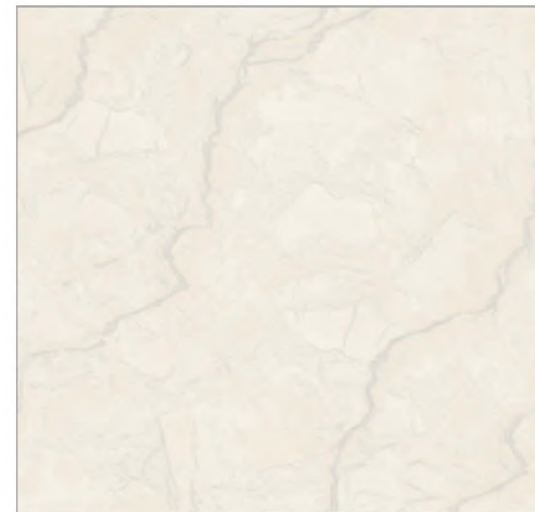
NT - 1003



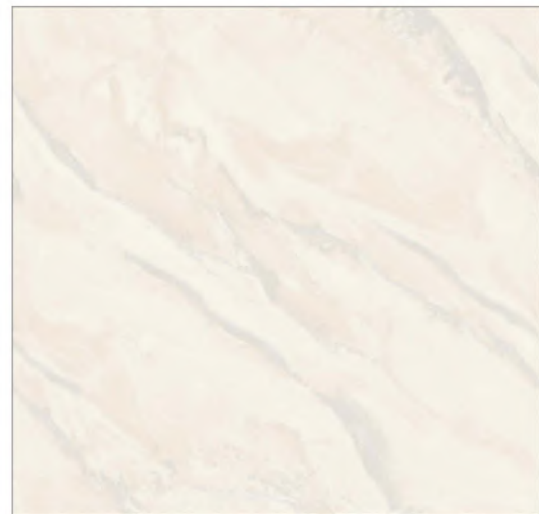
NT - 1004



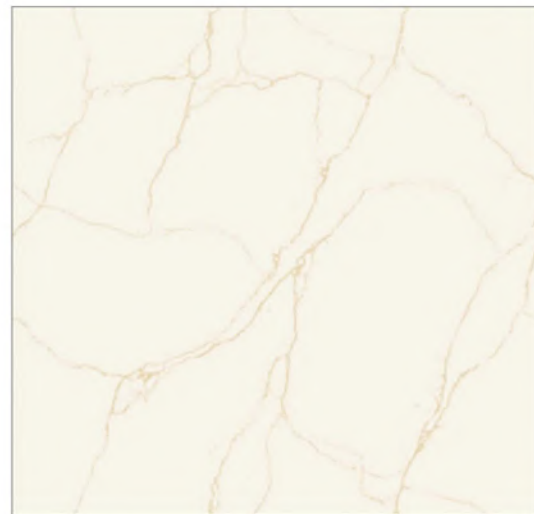
NT - 1005



NT - 1006



NT - 1007



NT - 1008



NT - 1009



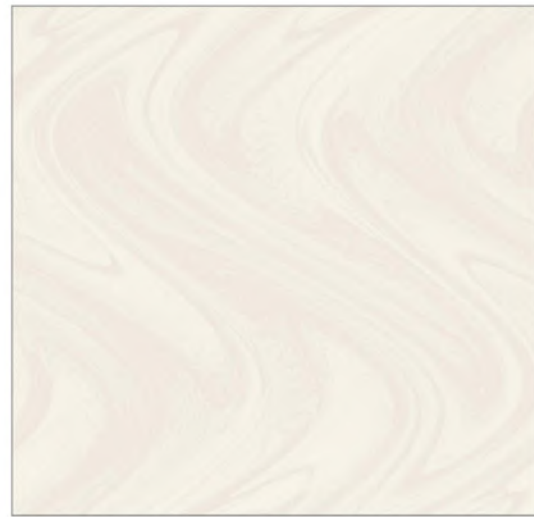
Preview of NT-1008



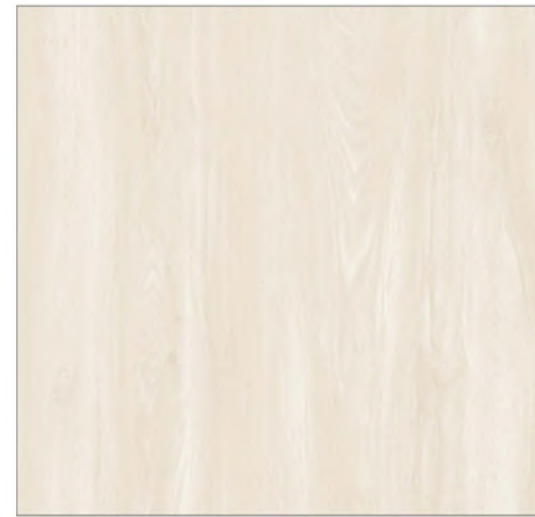
we increase your living standards...



NT - 1010



NT - 1011



NT - 1014



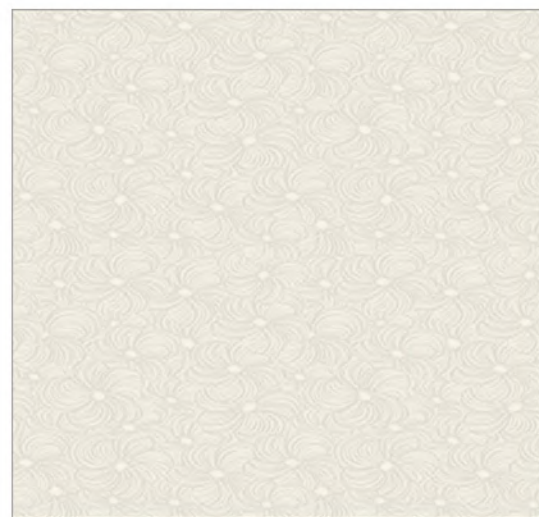
NT - 1015



NT - 1016



NT - 1017



NT - 1018



NT - 1019



NT - 1020



Preview of NT-1011



we increase your living standards...



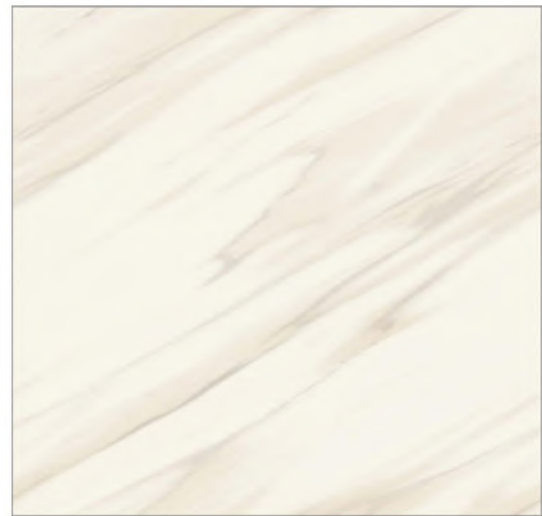
NT - 1021



NT - 1022



NT - 1023



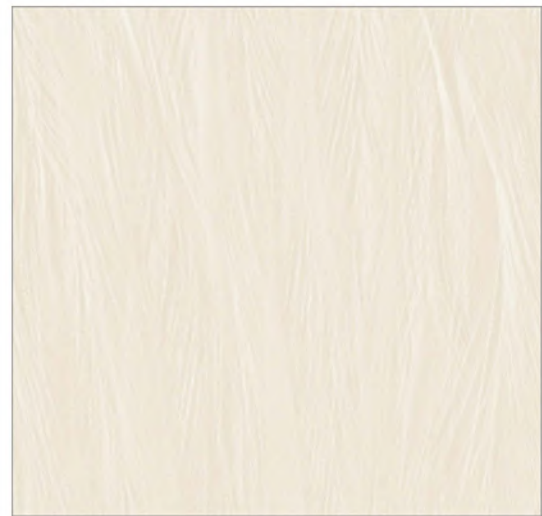
NT - 1024



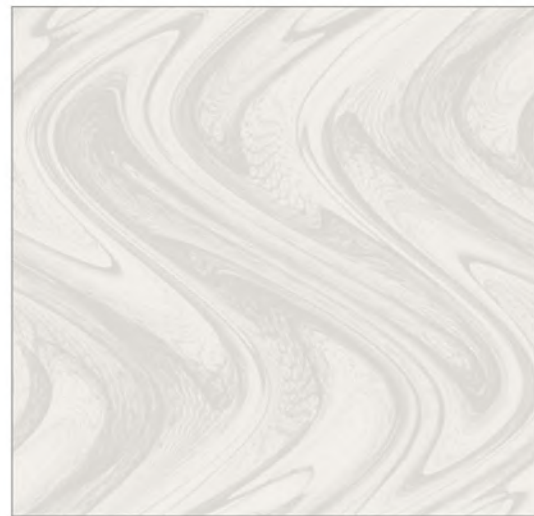
NT - 1025



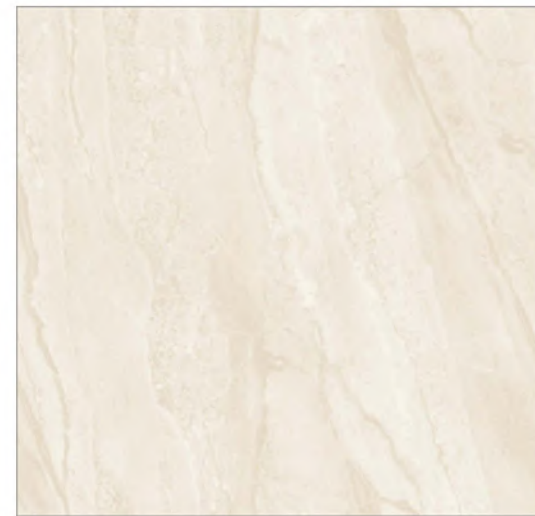
NT - 1026



NT - 1027



NT - 1028



NT - 1029



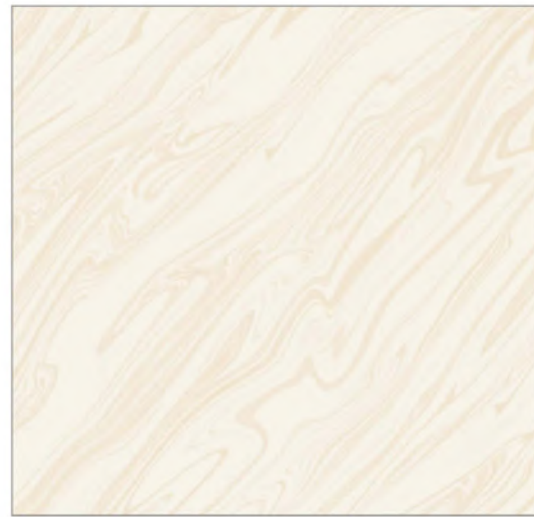
Preview of NT-1025



we increase your living standards...



NT - 1030



NT - 1031



NT - 1032



NT - 1033



NT - 1034



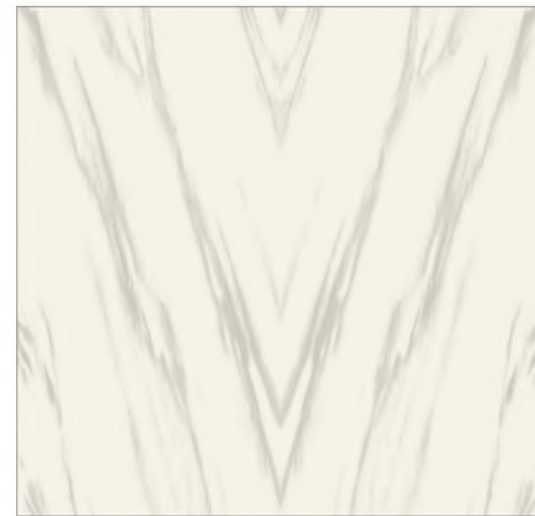
NT - 1035



NT - 1036



NT - 1038



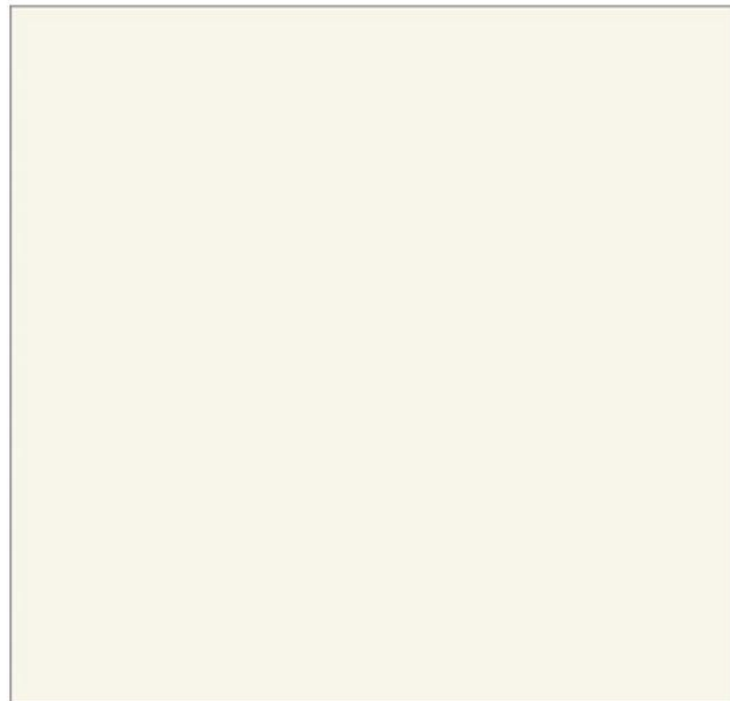
NT - 1039



Preview of NT-1038



we increase your living standards...



Ivory



Tera cotta

TECHNICAL ASPECTS

CHARACTERISTICS	TEST METHOD	ISO Standard 13006/EN 176 Group Bla	OUR VALUE
Deviation in Length	EN 98	± 0.6%	± 0.1%
Deviation in Thickness	EN 98	± 5%	± 4%
Straightness of sides	EN 98	± 0.5%	± 0.1%
Rectangularity	EN 98	± 0.6%	± 0.2%
Surface flatness	EN 98	± 0.5%	± 0.3%
Water absorption	EN 99	< 0.5%	< 0.05%
Scratch hardness (MOH's Scale)	EN 101	> 6 MOHS	> 7 MOHS
Modulus of Rupture	EN 100	> 27 N/mm ²	> 47 N/mm ²
Abrasion Resistance	EN 102	< 204 mm ³	< 98 mm ³
Skid Resistance (Friction Coefficient)	ASTM C-1028	>0.4	> 0.6
Breaking Strength	ASTM C-648	>1113 N	> 2830 N
Density (g/cc)	DIN 51082	> 2	> 2.4
Frost Resistance	EN 202	Frost proof	Frost proof
Chemical Resistance	EN 106	No damage	No damage
Thermal Shock Resistance	EN 104	No damage	No damage
Colour Resistance	DIN 51094	No damage	No damage
Thermal Expansion	EN 103	< 9 x 10 ⁻⁶	< 6 x 10 ⁻⁶
Stain Resistance	ISO 10545-14	Resistant	Resistant
Moisture Expansion	ISO 10545-10	Nil	Nil
Glossiness	Glossmeter	-	Min 65%-70% reflection

PACKING DETAILS

Size	Thickness	Tiles Per Box	Coverage Area	Weight Per Box
600 x 600 mm	8 mm	4	1.44 Sq mtr. (Approx)	26.5 Kgs

APPLICATION



DISCLAIMER : We reserves the right to delete & amend either totally or partially, any of the colours, shapes, sizes, references and other technical specifications contained in this catalogue at any time. Prospective customers are advised to inspect a sample of the tile. The colours shown of tiles in this catalogue are purely illustrative and limited to printing process. Shade & Size Variations are inherent characteristics of ceramics. Company does not accept responsibility once the tiles are laid.



we increase your living standards....