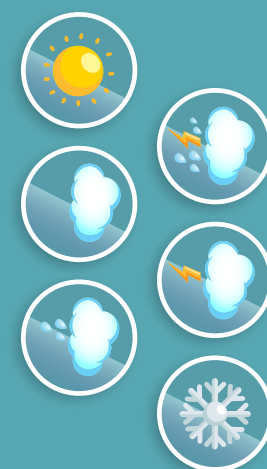




INDIAN  
WEATHER  
TESTED



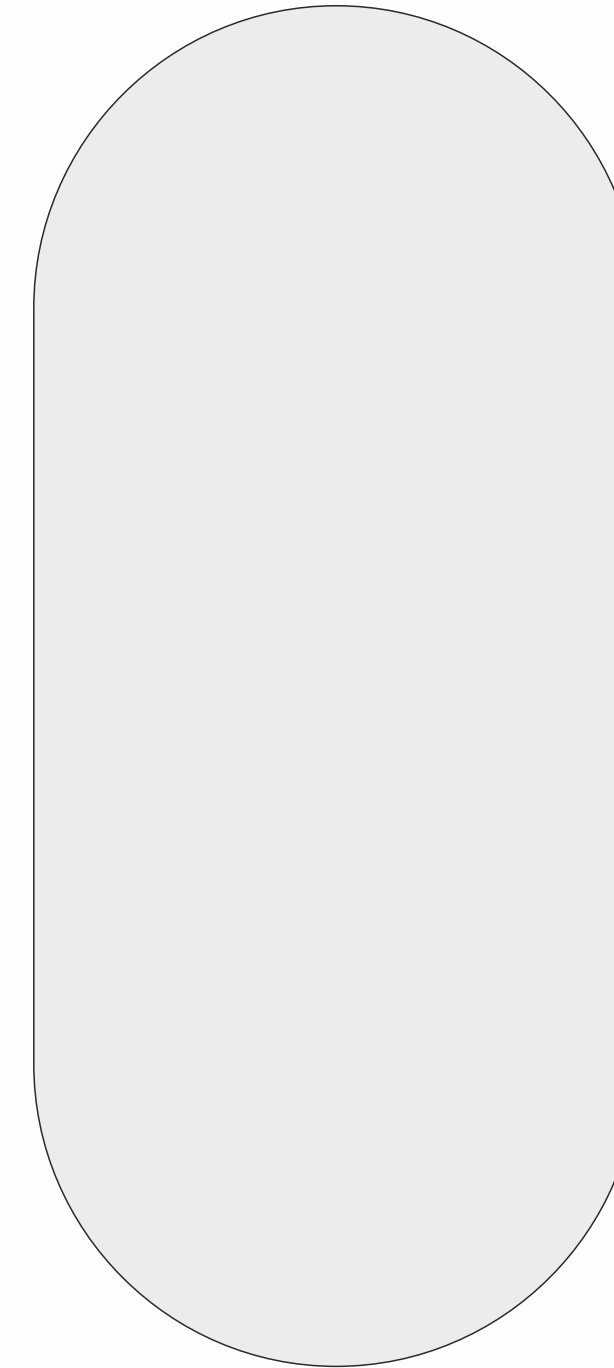
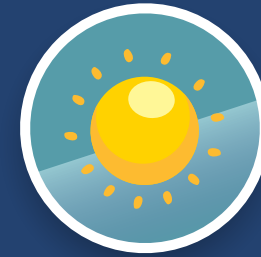
# INDIAN WEATHER TESTED HPL & WPC





Established in the year of 2019. We “E MAX” are leading Manufacturer, Importer, Supplier, Exporter, Service Provider, Distributor and Wholesaler of a wide range of Sheet, HPL Sheet, Wall Cladding etc.

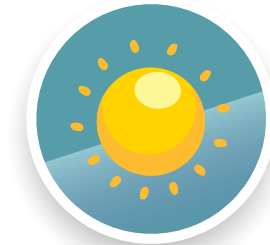
We direct all our activities to cater the expectations of customers by providing them excellent quality products as per their gratification. Moreover, we follow moral business policies and crystal pure transparency in all our transactions to keep healthy relations with the customers.



5280



7901





ALL WEATHER PROTECTION



LONG LASTING AND DURABLE



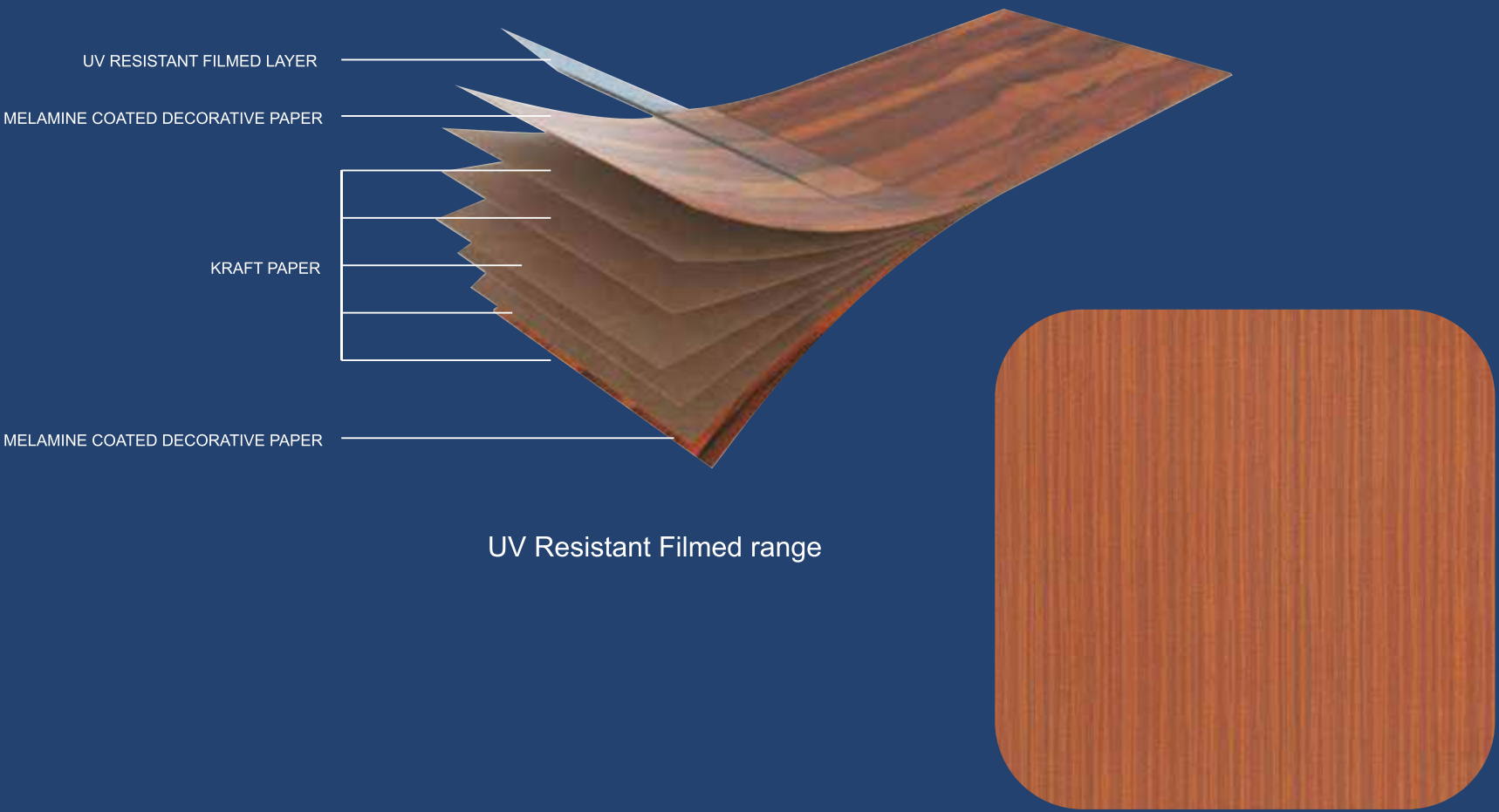


# TECHNOLOGY

## TECHNOLOGY THAT STANDS APART

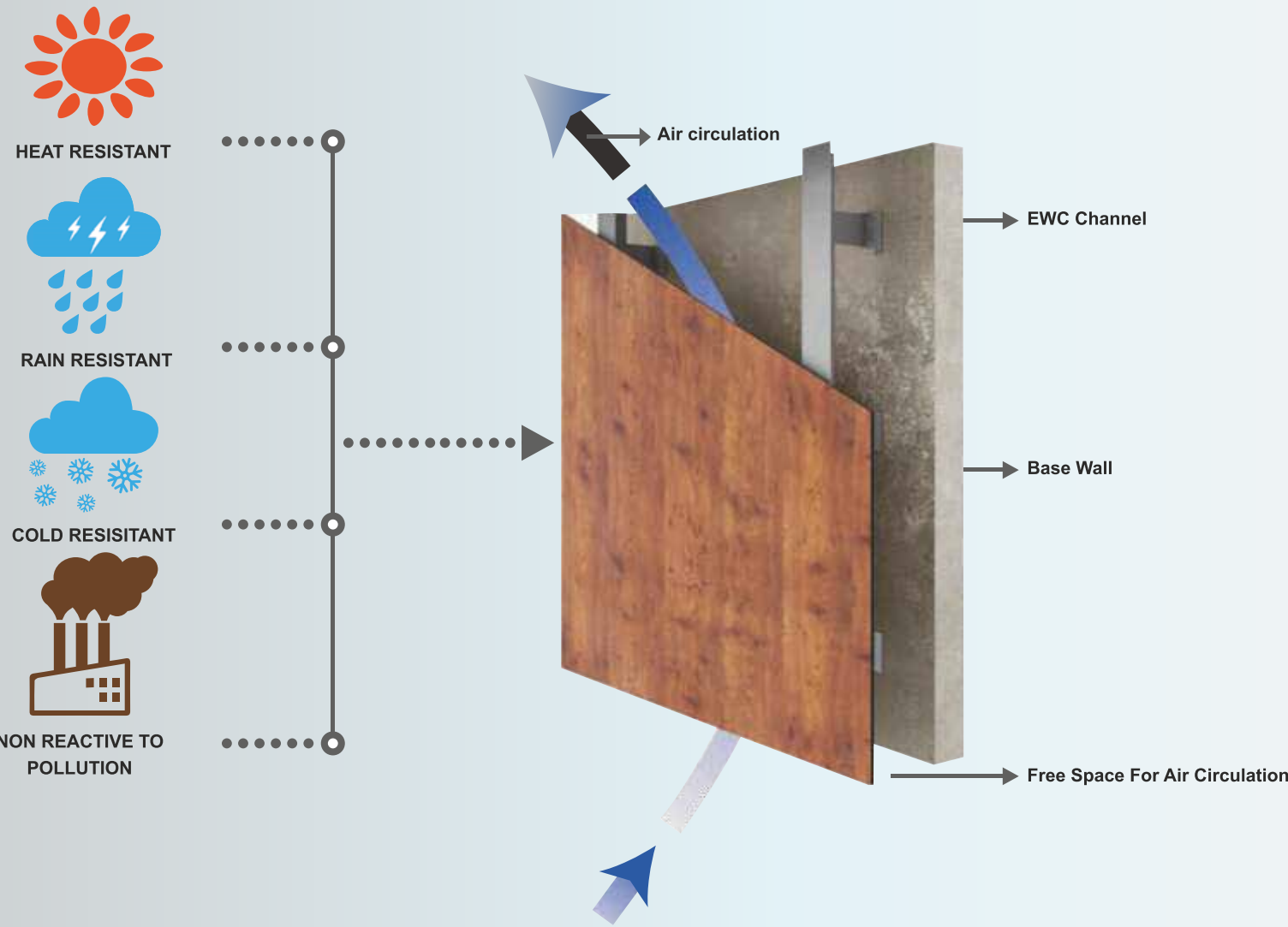
Emax HPL Cladding epitomizes beauty and toughness. It has been built with the superior external cladding technology which makes the exteriors enduring to the core and helps it withstand the impact of erratic wether conditions.

A special range with superclad Technology has a UV resistant top coating treated with poly Urethane (PU) and Acrylic to protect the exterior wall from the harmful Ultra-violet rays, which prevents fading and signiycantly enhances durability. Hands, Making Emax HPL Cladding Truly superior and strong for your exterior



# THE ENERGY SAVER

Emax HPL Cladding is not only an innovative, durable and aesthetic shield to your exterior is also has a natural mechanism which embodies an e°cient 'Energy Saving System'. A natural insulation i.e. an air cavity gets crated between the wall and the External Wall Cladding. This air gap facilitates continuous air ventilation that reduces heat or moisture on base structured wall thus, allowing retention of indoor temperature. The ventilation process contributes to reduced levels of energy consumption and also avoids corrosion of the exterior surfaces. The buildings are now better ventilated providing more comfortable indoor environment and ensuring signiycant energy saving.



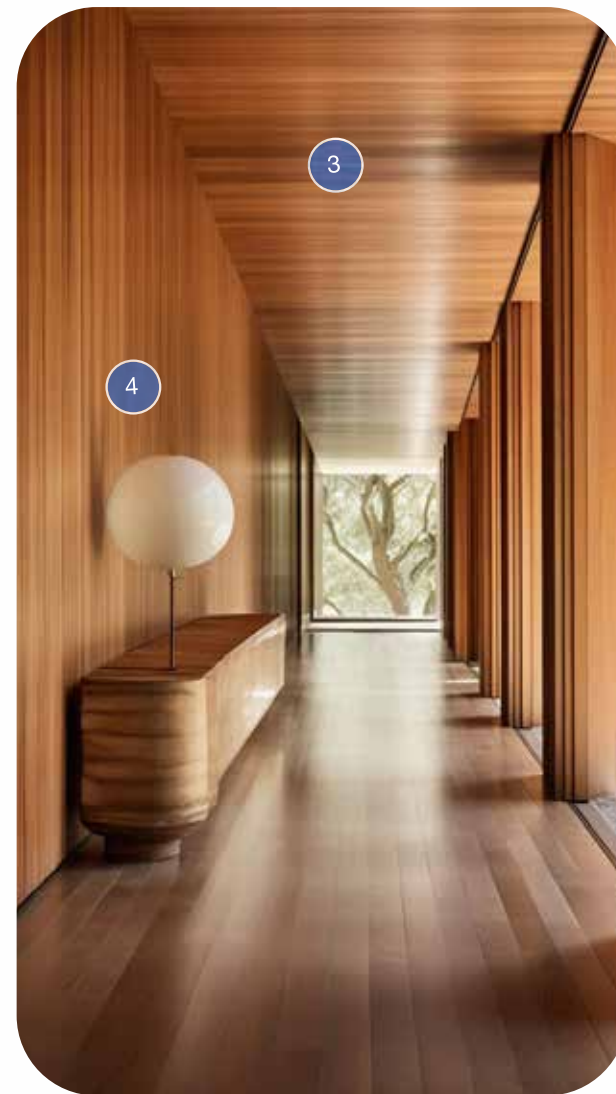
DUE TO ITS SPECIAL VENTILATION TECHNOLOGY, E Max HPL CLADDING IS ENERGY-EFFICIENT, SUSTAINABLE, INNOVATIVE AND LONG-LASTONG PROTECTOR TO YOUR HOME'S EXTERIOR.



## APPLICATION SPACE CHECK

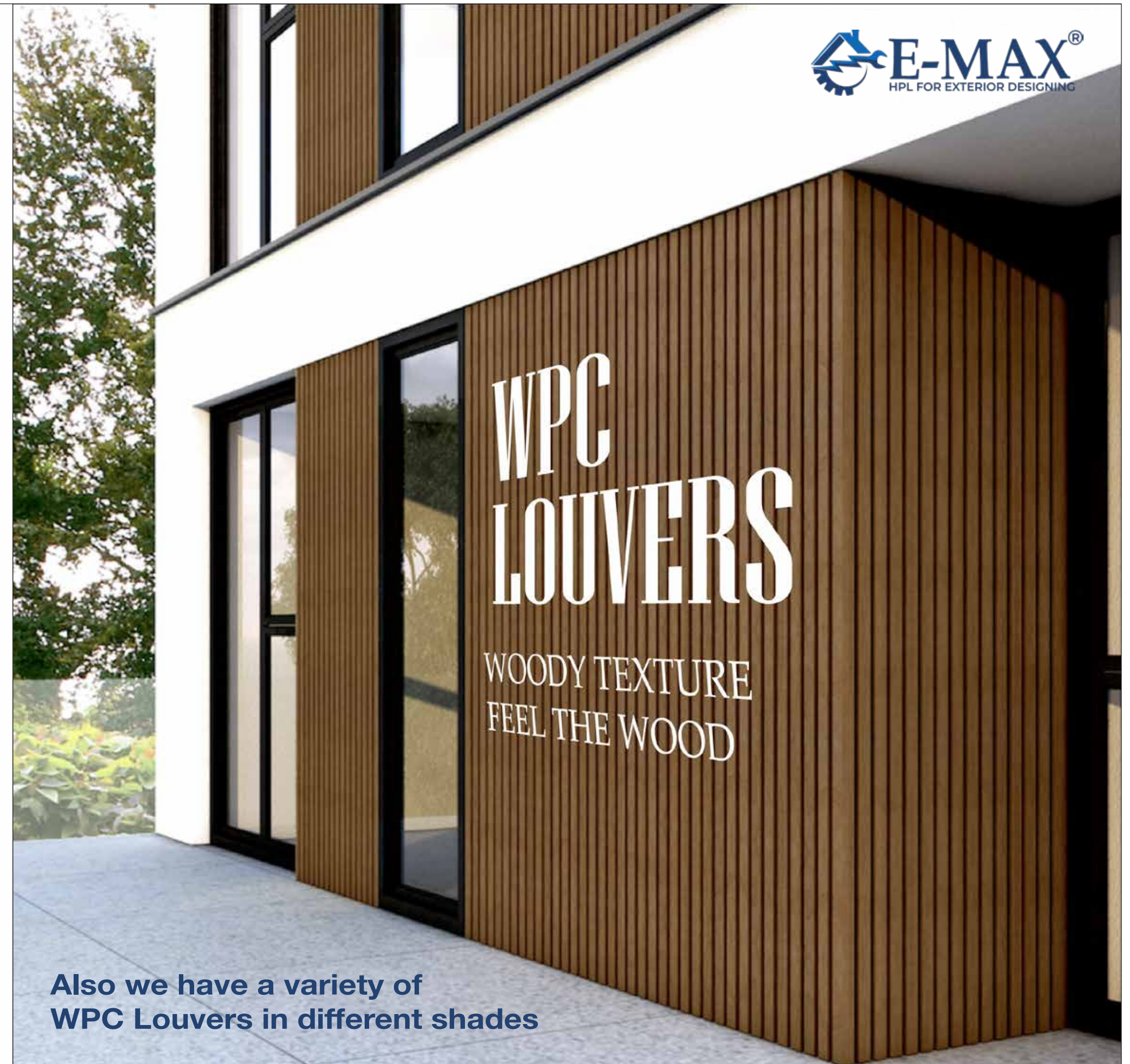
Explore the endless external possibilities of claddings...

E Max HPL Cladding can adorn many external surfaces and it gives new protective dimension to different kinds of spaces. Let's have glance at these possibilities of using speciyc sites of your building.



### OTHER APPLICATION AREAS

- Partitions • Railings • Fences • Outdoor Furniture • Public Facilities • Playground Facilities • Sports Facilities
- Sun Protection System • Office Entry Portals • Windows



Also we have a variety of  
WPC Louvers in different shades



E MAX COLLECTIONS

E MAX HPL WIDE RANGE FOR EXTERIORS

E MaxDesigns available in three ranges. There are woodgrain patterns that evoke the beauty of nature. The solids impart a robust personality to the buildings and the patterns create a mystiyed aura around the surface it has been cladded to.





WOOD GRAIN



Emax 8003



Emax 1101





WOOD GRAIN



Emax 915



Emax 7242





WOOD GRAIN



Emax 8010



Emax 9615





WOOD GRAIN



Emax 7010



Emax 7002





WOOD GRAIN



Emax 9616



Emax 7003





WOOD GRAIN



Emax 7243



Emax 7267





**PATTERNS**



**Emax 5820**



**Emax 5824**



**Emax BLACK**

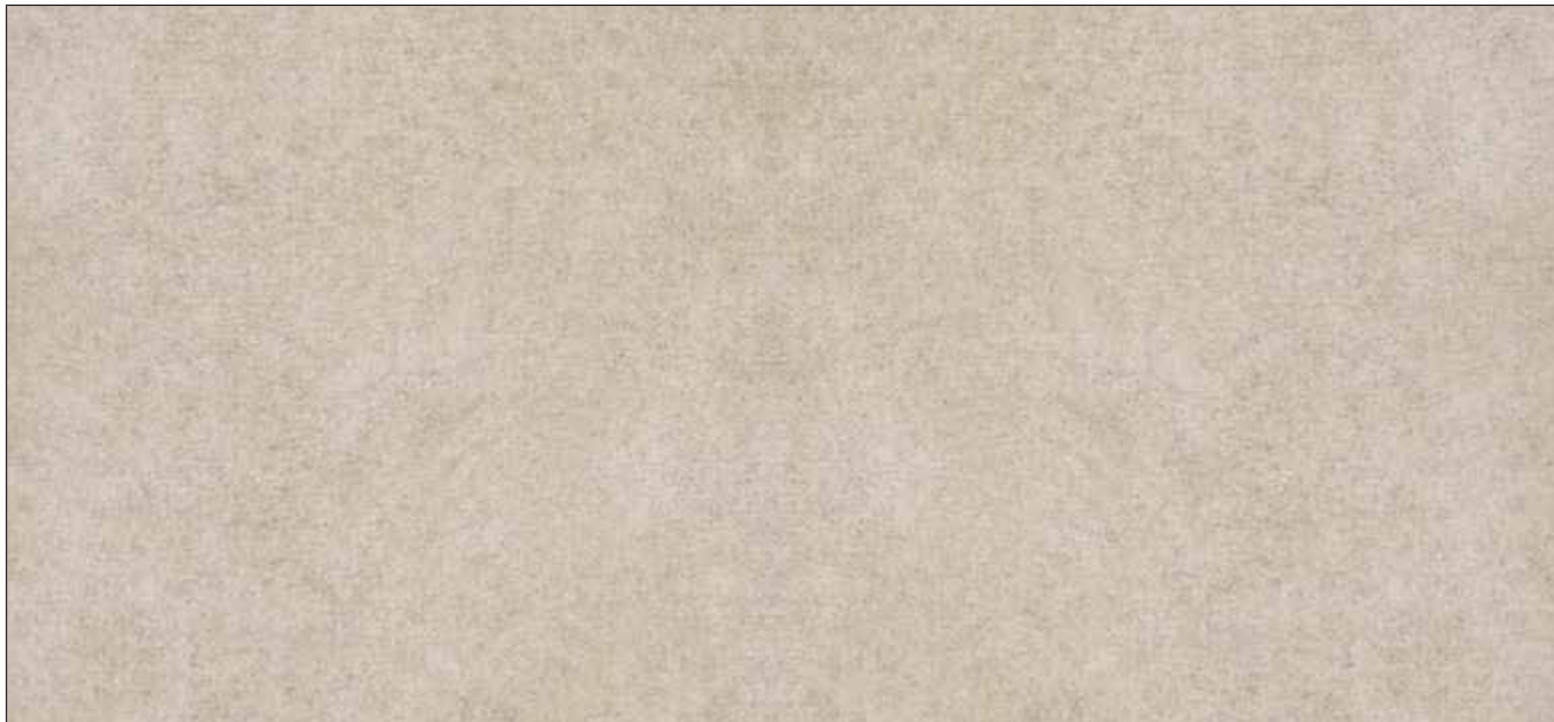


**Emax 5825**





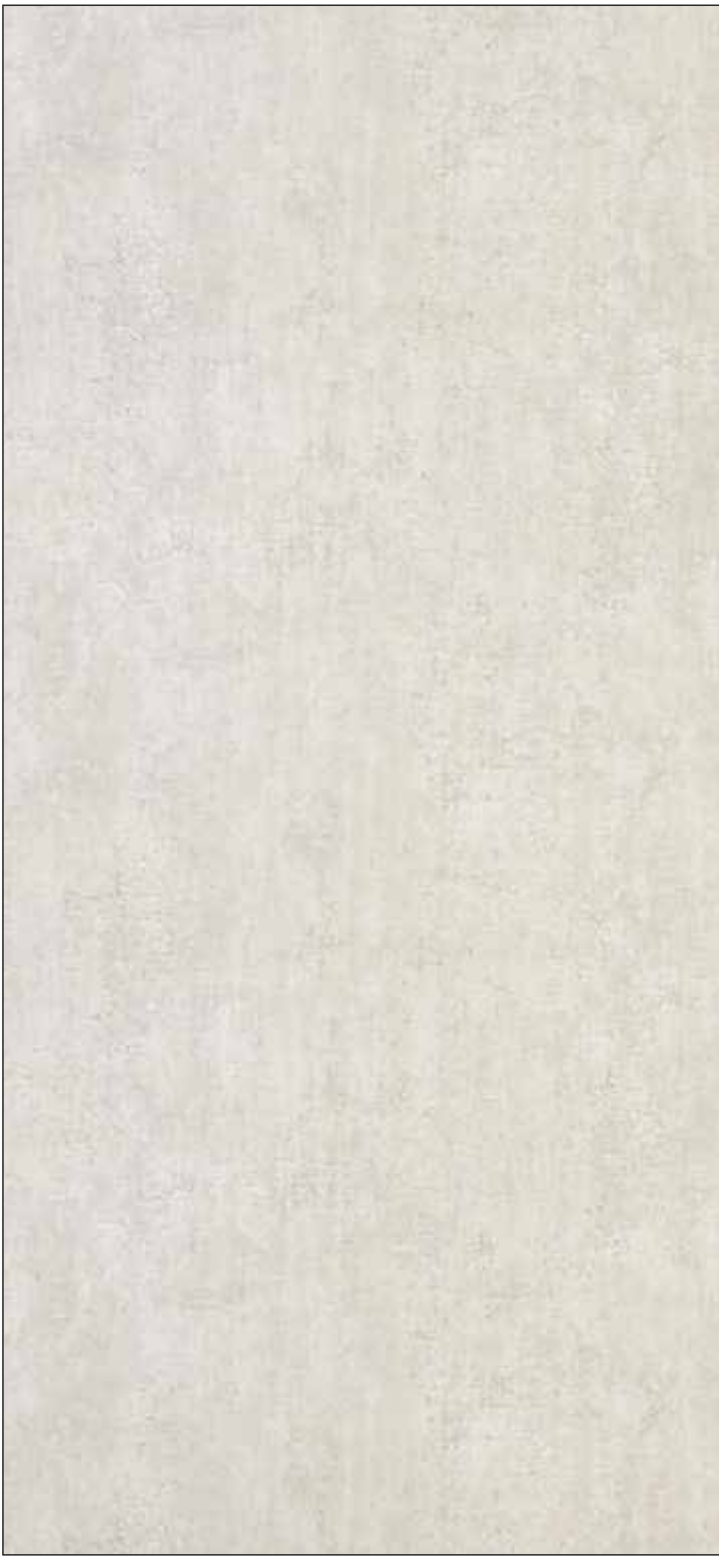
**STONE**



**Emax 5782**



**Emax 564**



**Emax 5794**



**Emax 7583**



**SOLIDS**



SF-7901

THE SPACE THAT'S  
THE CORE OF YOUR HOUSE  
NEEDS A SPECIAL TOUCH.

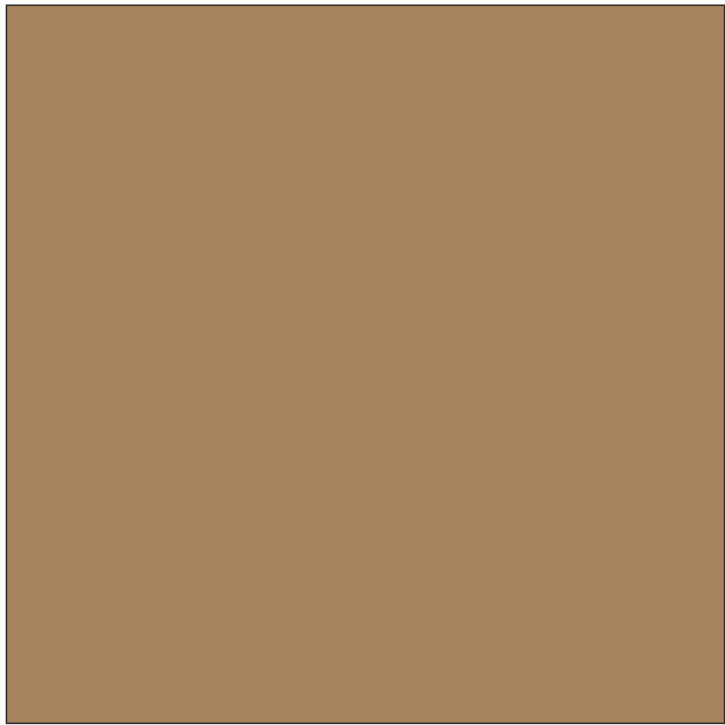


INDIAN   
**WEATHER  
TESTED**

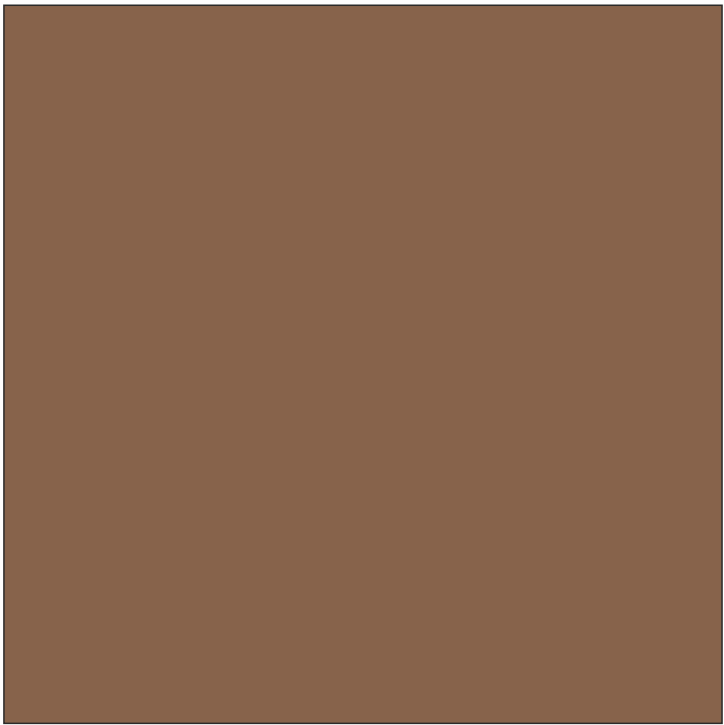




**SOLIDS**



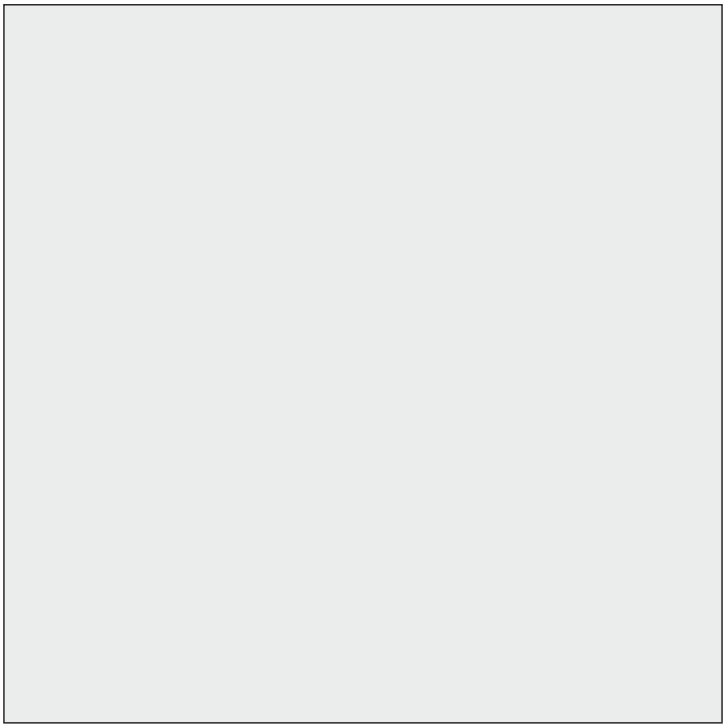
SF-5273



SF-5215

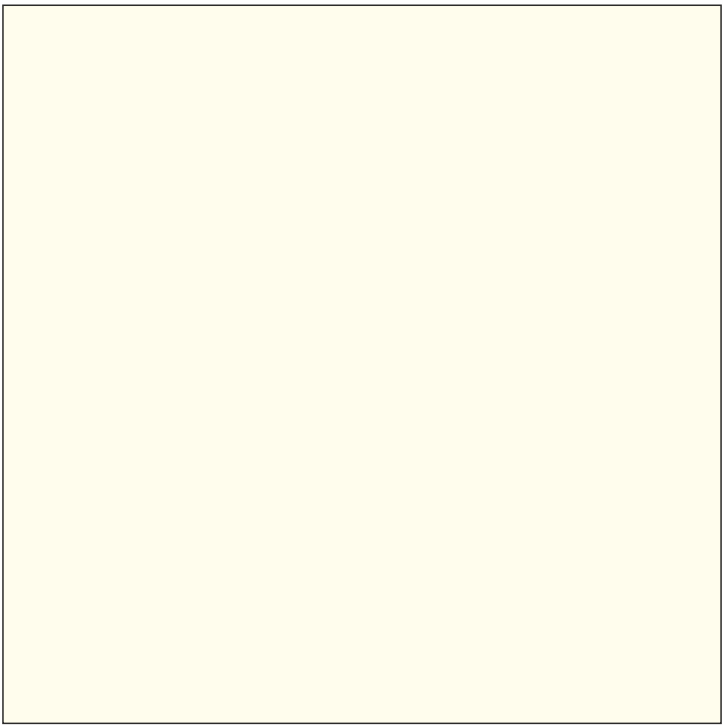


SF-5214

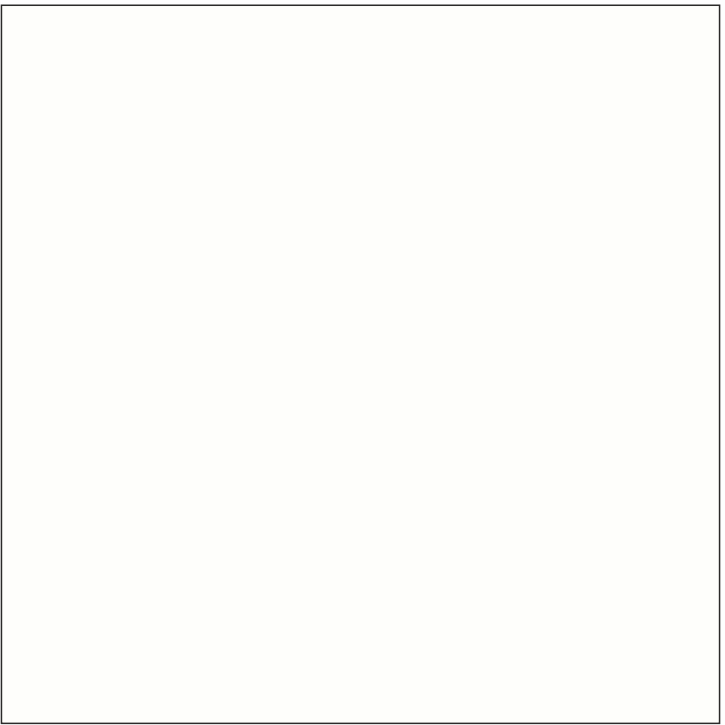


SF-5279

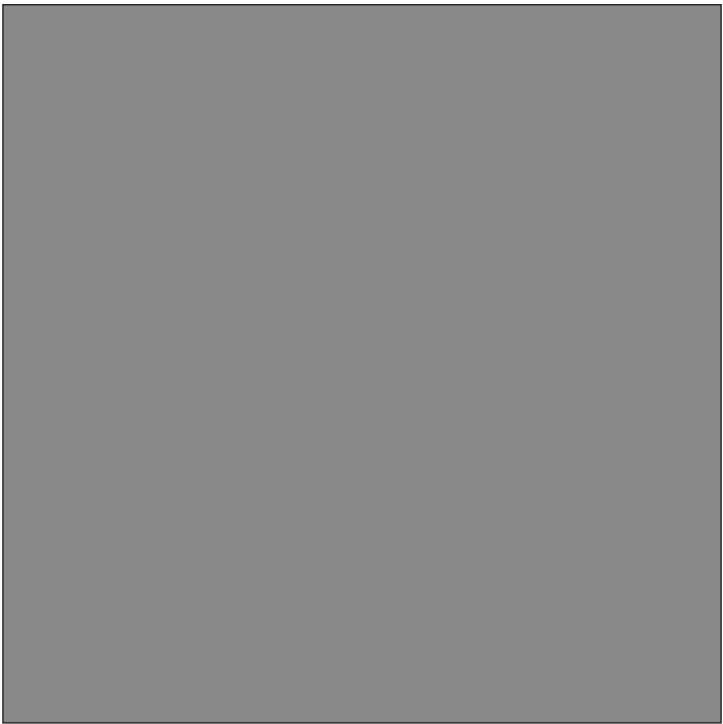
THE SPACE THAT'S  
THE CORE OF YOUR HOUSE  
NEEDS A SPECIAL TOUCH.



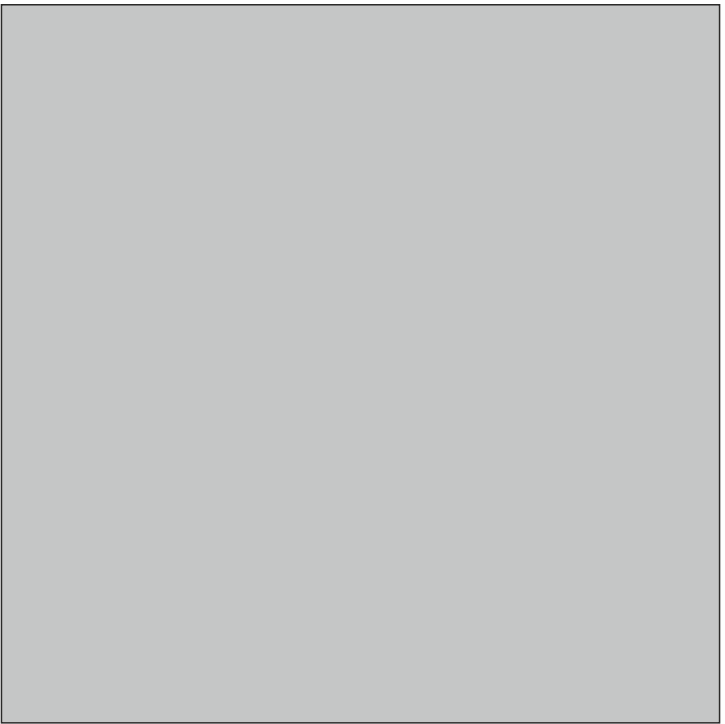
SF-5204



SF-5202



SF-5280



SF-5206



E MAX PRODUCTS COLOUR RANGE

IVORY	1074	BABY PINK	1047	BRICK	1041	VIOLET	1016	FLINT	1073
PEACH PINK	1057	BARBIE PINK	1058	BURGANDY	1043	PEACOCK BLUE	1017	BROAD BLUE	1071
RED	1052	GRAPHITE GREY	1054	MAROON	1042	INDIGO BLUE	1019	ELECTRIC BLUE	1018
YODA RED	1068	CHOCOLATE	1049	DEEP BLUE	1050	NAVY BLUE	1021	DOLPHINE BLUE	1020
MERCURY	1012	ZEC PURPLE	1072	BLACK	1056	CHALK GRADE		MARKER GRADE	
ALUSIL	101	ALUGOLD	102	ALUCOP	103	ALUBRONZ	104	ALWEB	106

E MAX PRODUCTS COLOUR RANGE



SNOW	1001	WHITE	1059	CHALK YELLOW	1030	NASTY YELLOW	1069	STROME	1053	EMPIRE	1009
EGG WHITE	1002	FROSTY WHITE	1005	MARI GOLD	1033	BARISTA	1036	SILVER GREY	1067	KIWI GREEN	1025
CREAM	1061	MYSORE IVORY	1055	CHROME YELLOW	1031	ORANGE	1037	NEW THISTLE	1007	GRASS GREEN	1026
CLASSIC BEIGE	1062	IRISH CREAM	1066	GOLDEN YELLOW	1034	DEEP ORANGE	1060	MINT GREEN	1024	BOTTLE GREEN	1027
CADBURY	1045	BEIGE	1064	BISCUIT	1070	PALE BLUE	1023	PISTA	1048	AQUA GREEN	1029
	1075		1076		1077		1078		1079		1080





## TECHNICAL SPECIFICATION

Size: 2440mm x 1220mm

Sr No.	Properties	Specification As per EN 438 - Part 6	Easterno Values
1	Thickness (mm.) (max.)		
	5.00 ≤ t < 8.00 (mm.)	6.00 ± 0.40 mm.	6.10 mm.
2	Length (mm.)	2440.00 + 10.00 /-0.00 mm.	2441.00 mm.
3	Width (mm.)	1220.00 + 10.00 /-0.00 mm.	1221.00 mm.
4	Edge straightness mm. (max.)	1.50 mm. / m	0.88 mm. / m
5	Edge squareness mm. (max.)	1.50 mm. / m	0.80 mm. / m
6	Flatness (mm.) (max.)		
	2.00 ≤ t < 6.00 (mm.)	8.00 mm. / m	3.60 mm. / m
	6.00 ≤ t < 10.00 (mm.)	5.00 mm. / m	2.40 mm. / m
	t ≥ 10.00 (mm.)	3.00 mm. / m	1.50 mm. / m
7	Tensile Strength (min.)	60 Mpa.	68 Mpa.
8	Density, gm. / cm <sup>3</sup> (min.)	1.35 gm. / cm <sup>3</sup>	1.48 gm. / cm <sup>3</sup>
9	Resistance to wet conditions		
	a) Mass increase (%) max.		
	2.00 ≤ t < 5.00 (mm.) (t = normal thickness)	10%	3.20%
	t ≥ 5.00 mm.	8%	2.50%
10	b) Appearance not worse than	Rating 4	Rating 5
	Dimensional Stability at elevated temperature.		
	2.00 ≤ t < 5.00 (mm.) (t = normal thickness)		
	a) Longitudinal, % max.	0.40%	0.20%
	b) Transverse, % max.	0.80%	0.40%
	t ≥ 5.00 mm.		
	a) Longitudinal, % max.	0.30%	0.20%
	b) Transverse, % max.	0.60%	0.35%
11	Surface Burning Test.		
	As Per ASTM E84-16, CLASS-A		
	a) Flame Spread Index (FSI)	0 - 25	5
	b) Smoke Developed Index (SDI)	0 - 450	30

**Note:** Sample shown in this magazine are for color & pattern reference only and for actual color please refer our actual product sample.



FIRE RESISTANT



WEATHER RESISTANCE



MOISTURE RESISTANT



UV RESISTANCE



IMPACT RESISTANT



CORROSION FREE



TERMITE RESISTANT



GRAFFITI RESISTANCE



SCRATCH RESISTANT



CLIMATIC SHOCK  
RESISTANCE