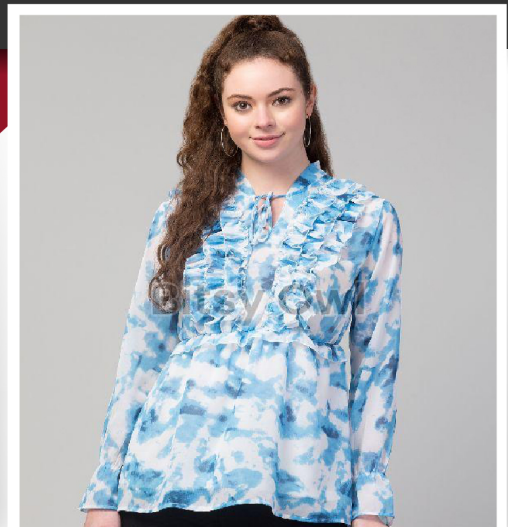


BITSY OWL



BITSY OWL is an emerging manufacturer and supplier of ladies' wear located in Delhi. Our exclusive range of ladies' wear is excellently designed considering the latest fashion trends. We also offer customized products as per the preferences and the demands of our valuable clientele.



ABOUT US

Bitsy Owl is an emerging manufacturer and supplier of ladies' wear located in Delhi. Our exclusive range of ladies' wear is excellently designed considering the latest fashion trends. We also offer customized products as per the preferences and the demands of our valuable clientele. Our range of products consists of ladies one-piece dresses, ladies palazzo & top sets, ladies tracksuits, ladies tops, ladies jackets, ladies jumpsuits, etc.

Along with our dedicated team of professionals, we have a well-constructed infrastructural unit that is equipped with cutting-edge machinery and technology. Our infrastructural unit plays a vital role in the entire process of production and helps our team to perfectly manage each and every activity right from raw material procurement to manufacturing and logistic activities. The company was established in the year 2020 and in this short period of time, we are proud to say that we have all the facilities like stitching, designing, and finishing unit to carry out the complete operation of manufacturing garments while ensuring high-quality standards in the product range. Our quality testing professionals ensure that the range of products that we deal with must meet the industry-set standards and clients' expectations. Moreover, we use optimum quality packaging materials to pack our products in order to ensure the shipments arrive safely without any damage.

Running under the headship of Mr. Pankaj Kumar, the company is striving to reach its business target. His expert managerial skills enabled us to readily accept bulk orders from our clients and ensure to complete them within the specified timeline.

Name of Founder	Mr. Pankaj Kumar
Year of Establishment	2020
Nature of Business	Manufacturer & Supplier
Number of Employees	Upto 10 Peoples
Annual Turnover	Upto Rs. 50 Lakh
Market Covered	India
GST No	07EOCPK0980M2ZL

Ladies One Piece Dresses



Ladies Purple One Piece Dress



Women Girls Three-Quarter Cape Sleeves
Moonlight Flared Calf Length Long Dress

Want to change up your look for the season? It's time to purchase a Ladies One Piece Dress. The trendiest single-piece gowns for women this season are quite detailed. With good reason, the print-single piece is regarded as one of the greatest colours for those with fair or wheat-coloured complexion. There are numerous ways to wear one-piece dresses and express your style. Popular single-piece long dresses typically have an unclear waistline and hang loosely. The dress is ideal for ladies with heavy body types yet may be easily pulled on by women. It can make your profile appear sleek and lanky.



Women Girls Tie-up Shoulder Straps
Printed Georgette Flared Jumpsuit



Women Printed Sleeveless Georgette
Front Slit knee length Dress Fabric -
Georgette

Ladies Palazzo & Top Set

In the 1960s and 1970s, palazzo pants with tops first gained popularity. In fashion shows, a select few actresses and models were spotted flashing them. Since then, this look has gained more and more space in every fashionista's closet. It has an impact on both traditional and modern fashion.

Palazzo pants are now more readily available online from any Ladies Palazzo Supplier, both in terms of number and variety. Women used to wear them under tops or any other kind of western clothing in the past, but the inventive designer incorporated them into every costume, and today we can see how beautifully our ethnic divas are displaying them with traditional attire like kurtas and suits.

One of the brands that allowed ladies to combine innovation with their classic appearance is Bitsy Owl. Before there were palazzo trousers for women and girls, there was the sharara, which women wore underneath long, straight kurtas. However, it was discovered that wearing a heavy, flared sharara made the outfit look extremely forced.

It wasn't working for individuals who want carefree styling, therefore cotton palazzo pants took their place. Although churidars have been around from the beginning, cotton palazzo trousers nevertheless managed to gain the upper hand. It might be a result of its brilliant addition to the entire ensemble.

The market leader in women's ethnic clothing is Bitsy Owl. It provides a nice selection of fashionable bottom wear for women and girls, including palazzo pants, and does so in several prints and other detail-based styles. Every style of palazzo pant, from plain white to gold foil printed, cotton to art silk is included in the new collection.

Being a well-known ethnic company, Bitsy Owl is aware of the value of Indian traditional clothing, which is why it has created salwar suits with a modern twist by substituting cotton palazzo pants for the salwar for ladies and girls.



Stylish Solid Top and Palazzo Co-ords Set for women

Business Type	Manufacturer, Supplier
Country of Origin	India
Size	L, M, S
Material	Polyester
Color	Multicolor
Season	Summer
Feature	Comfortable, Easily Washable, Impeccable Finish, Skin Friendly
Technics	Attractive Pattern, Machine Made
Pattern	Plain
Occasion	Party Wear, Wedding Wear
Sleeve Type	Half Sleeves
Stitch Type	Stitched
Brand Name	Bitsy Owl
Design	BO-10
Colour	peach
Product Code	BO10
Delivery Time	7-10 business days
Packaging Details	Fresh poly packing

Ladies Tracksuits

Tracksuits for women are cosy and useful clothing items to choose for your wardrobe, whether you're going to the gym, shopping, or just hanging out at home. These tracksuits for women from Bitsy Owl as Ladies Tracksuit Suppliers, come in designs that are perfect for a variety of activities, including winter sports, yoga, jogging, skateboarding, a day at the tennis court, or just living a busy lifestyle.

These women's tracksuits come in hues that go well with your unique style and can be matched with your go-to tees and sneakers. They are also composed of light, breathable materials for added comfort.

Women's tracksuits have high waistlines and other design features that offer excellent coverage and a relaxed fit. Lightweight materials, such as breathable ones, will help you breathe better and keep you cooler during vigorous exercise.

The comfort you'll experience while wearing one of these tracksuits for women is enhanced by the additions like pockets for keeping your little stuff, elastic cuffs that stay in place, and soft, ribbed cuffs that keep the elements off your forearms. Additionally, some jacket designs incorporate side snaps that may be opened or closed as needed to provide more ventilation or warmth.

When looking for Bitsy Owl tracksuits for ladies, you should consider where you'll wear them and what you could be doing while wearing them. Our tracksuit bottoms are equipped with useful features including water-repellent coatings for all weather conditions and breathable, vented fabrics to keep you cool throughout exercises.

To stay warm in the cold, try wearing a jacket with a fleece inside. Look for tracksuit jackets with pockets for securing your items while you're out and about or exercising, and choose bottoms with high waistlines for broader coverage and a more comfortable fit. We have drawcords at the waist of our bottoms so you may comfortably adjust them.



Ladies Black & Yellow Tracksuit

Business Type	Manufacturer, Supplier
Country of Origin	India
Size	M, S
Type	Fancy
Material	Fleece
Application	Gym Wear, Jogging Wear
Color	Multicolor
Gender	Female
Season	Winter
Feature	Easily Washable
Technics	Attractive Pattern
Age Group	Adult
Pattern	Plain
Sleeve Type	Full Sleeves
Brand Name	bitsy owl
Fabric Type	fleece
Available Quantity	400
Colour	light Red
Payment Terms	Other
Delivery Time	7-10 Business Days
Packaging Details	LDPE packaging



Ladies Black Fringe Top



Ladies Brown Sequin Top



Ladies Purple Top



Ladies Red Top



Women Drawstring Solid Shimmer Top



Women Girls Knot Style Tinsel Bling women top



Womens Girls Strings Solid Crop Top



Womens Girls Zipper Solid Crop Top



Womens Printed Co-ord set



Bishop Sleeve Peplum
Lace Top



Women Regular fit Solid
Bomber jacket



Women Sweatshirt



Ladies Dresses



Suede Jacket



Women Solid Double-Breasted
Casual Suede Blazer



Women Girls Sequined Style
Sleeveless Solid Jumpsuit



Ladies Jacket



Ladies Jumpsuit



BITSY OWL



MR. PANKAJ KUMAR

ADDRESS :

RZ-1, Extension, Main Road, Tughlakabad, Delhi, India - 110019

PHONE : +91-7982039838

EMAIL ID : bitsyowl@gmail.com

WEBPAGE : <http://www.bitsyowl.co.in>

WEBSITE : <https://www.exportersindia.com/bitsy-owl/>

