

Call :- +91-98-1162-8456

*Manufacturers, Exporters,  
Wholesaler*

# 1995 GLOBE OVERSEAS PVT LTD

**Let's Make Lifting Smarter**

Eot Cranes

Electric Hoist

Jib Cranes

Chain Pulley Block

Winch Machine

As a prominent supplier of industrial products, we are well-versed with industry trends and clients' demands. We provide a plethora of product range that includes Mobile floor cranes, electric wire rope hoist, portable gantry cranes, crab winch machine, etc to our clients at competitive rates. Our company aims to surpass our client's expectations by providing product efficiency with the use of cutting-edge technology.

[www.globeoverseaspvtltd.co.in](http://www.globeoverseaspvtltd.co.in)

 +91-011-46802215

 [goplseas@gmail.com](mailto:goplseas@gmail.com)



Founded in 1995, "Globe" is an acknowledged leader of India's Material Handling Industry. Globe Overseas Pvt Ltd is a distinguished and experienced manufacturer, Exporter and supplier of Delhi that offers premium quality EOT cranes to our clients all across the nation. With two decades of experience in the field, we understand and cater to our client's bulk and retail EOT crane needs promptly & cost-effectively. Our fine-quality product range is manufactured using high-grade raw material and under the supervision of industry experts for maximum value creation.

## QUALITY ASSURANCE

As a prominent supplier of industrial products, we are well-versed with industry trends and clients' demands. We provide a plethora of product range that includes Mobile floor cranes, electric wire rope hoist, portable gantry cranes, crab winch machine, etc to our clients at competitive rates. Our company aims to surpass our client's expectations by providing product efficiency with the use of cutting-edge technology. Our product range is diverse, high performing, durable and customizable for our clients at the budgeted price.

## PRODUCT SHIPPING

We have essential resources to guarantee timely delivery of our consignment anywhere in the world. We provide 24/7 customer support and cater to any queries of our clients in the quickest way possible. Our company has built a brand name for ourselves with our creative ideas & fair business policies. We are aiming to become global leaders through continuous improvement and innovation in the coming years.

**Name of CEO**  
Mr. Vipin Mittal

**Number of Employees**  
50 - 100

**Annual Turnover**  
Rs. 4 Crore

**Market Covered**  
Worldwide

**GST No.**  
07AAACG4291L1ZE

**Legal Status of Firm**  
Private Limited

**Year of Establishment**  
1995

**Nature of Business**  
Manufacturers, Exporters, Wholesaler

## Double Girder EOT Cranes



PRODUCT DETAILS

**Business Type** :- Manufacturer, Exporter, Supplier

**Material** :- Cast Iron

**Feature** :- Capable For Load, Customized Solutions, Heavy Weight

**Automatic Grade** :- Electric

**Power** :- 100-300bhp

**Power Source** :- Electric

**Capacity** :- 5 Ton To 100 Ton

**Crane Type** :- Double Girder Eot

## Portable Gantry Cranes



PRODUCT DETAILS

**Business Type** :- Manufacturer, Exporter, Supplier

**Feature** :- Capable Heavy Load Lifting, Corrosion Resistance

**Automatic Grade** :- Electric

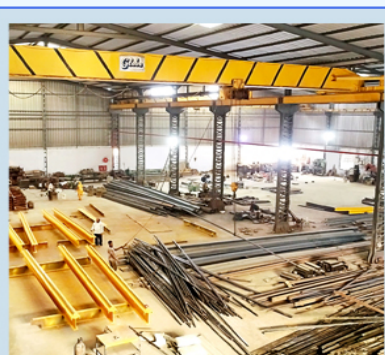
**Power** :- 100-300Hp

**Capacity** :- 1 Ton To 50 Ton

**Warranty** :- 1year

**Location** :- Worldwide

## Single Girder Eot Cranes



PRODUCT DETAILS

**Business Type** :- Manufacturer, Exporter, Supplier

**Material** :- Cast Iron

**Feature** :- Capable For Load, Customized Solutions, Heavy Weight

**Automatic Grade** :- Manual, Semi Automatic

**Power** :- 100-300bhp

**Power Source** :- Electric

**Capacity** :- 1 Ton To 15 Ton

**Height** :- 20-30feet, 30-40feet

## Under Slung Cranes



PRODUCT DETAILS

**Business Type** :- Manufacturer, Exporter, Supplier

**Capacity** :- 5 Ton

**Max Height** :- 20-40 feet

**Power Source** :- Electric

**Color** :- Yellow

**Voltage** :- 50 Hz

**Features** :- High load bearing capacity, Quality tested

**Usage/Application** :- Industrial

## Electric Chain Hoist



PRODUCT DETAILS

**Business Type :-** Manufacturer, Exporter, Supplier

**Type :-** Electrical Hoist

**Voltage :-** 380V, 440V

**Automatic Grade :-** Automatic

**Power :-** 1-3kw

**Driven Type :-** Electric

**Capacity :-** 1 Ton To 5 Ton

## Electric Wire Rope Hoist



PRODUCT DETAILS

**Business Type :-** Manufacturer, Exporter, Supplier

**Type :-** Electrical Hoist

**Voltage :-** 220V, 380V, 440V

**Automatic Grade :-** Automatic

**Driven Type :-** Electric

**Warranty :-** 1year

**Capacity :-** 0.5 Ton To 15 Tons

## Column Mounted Jib Cranes



PRODUCT DETAILS

**Business Type :-** Manufacturer, Exporter, Supplier

**Type :-** Column Mounted

**Color :-** Yellow

**Feature :-** Capable For Load, Customized Solutions, Heavy Weight

**Automatic Grade :-** Electric

**Power :-** 100-300bhp

**Capacity :-** 1Ton To 5 Ton

**Warranty :-** 1year

## Mobile Floor Cranes



PRODUCT DETAILS

**Business Type :-** Manufacturer, Exporter, Supplier

**Type :-** Portable

**Feature :-** Capable For Load, Heavy Weight Lifting

**Power :-** 100-300bhp

**Capacity :-** 0.5 Ton To 2 Ton

**Warranty :-** 1year

**Driven :-** Hydraulic

## Wall Mounted Jib Cranes



PRODUCT DETAILS

- Business Type :-** Manufacturer, Exporter, Supplier
- Lifting Capacity :-** 0.5 Ton - 3 Ton
- Arm Length :-** 2-6 Mtrs
- Design :-** As Per IS 3177 & 807
- Hoisting & Travelling :-** Electric Hoist & Manual Chain Block
- Rotation :-** Upto 180 Degree Manual & Motorise
- Operation :-** Through Push Button Pendent From Floor Level

## Classic Series Chain Pulley Block



PRODUCT DETAILS

- Business Type :-** Manufacturer, Exporter, Supplier
- Material :-** Iron, Metal, Stainless Steel
- Head Roll :-** 410-950
- Driven Type :-** Manually
- Capacity :-** 1Ton, 2Ton, 3Ton, 3Ton, 5Ton, 10Ton
- Usage :-** Weight Lifting
- Feature :-** Steel recommended as per IS -3832, high quality steel housing ball and needle bearings, improved efficiency

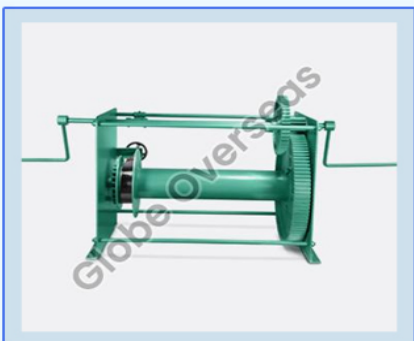
## Robo Series Chain Pulley Block



PRODUCT DETAILS

- Business Type :-** Manufacturer, Exporter, Supplier
- Type :-** Chain Pulley Block
- Material :-** Iron, Metal
- Technics :-** Hot Dip Galvanized
- Driven Type :-** Manually
- Usage :-** Weight Lifting
- Capacity :-** 1Ton To 25 Ton
- Feature :-** Heavy duty and large diameter of handwheel gives smooth & effortless lifting.

## Crab Winch Machine



PRODUCT DETAILS

- Business Type :-** Manufacturer, Exporter, Supplier
- Type :-** Winch Machine
- Power Source :-** Manual
- Rope length :-** 60-80mtr, 80-100mtr
- Capacity :-** 1 Ton, 2 Ton, 3 Ton, 5 Ton, 10 Ton, 15 Ton, 20 Ton
- Drum Dia :-** 160mm – 400mm
- Application :-** Pulling of vehicles , wapon ,belts in mining. Pulling work requiring long life.

## Electric Winch Machine



PRODUCT DETAILS

**Business Type** :- Manufacturer, Exporter, Supplier

**Power** :- 1-3kw

**Driven Type** :- Electric

**Warranty** :- 1yrs

**Capacity** :- 1 Ton To 15 Ton

**Rope Thickness** :- 10-15mm, 5-10mm

**Application** :- construction, mining, hydro project, belt pulling & wagon pulling on rails are some of the major application of electrical winch machines.

**Features** :- long distance pulley can be done. Low maintenance all spare are available.

## Worm Gear Winch Machine



PRODUCT DETAILS

**Business Type** :- Manufacturer, Exporter, Supplier

**Voltage** :- 220V

**Automatic Grade** :- Semi Automatic

**Power** :- 1-3kw

**Rope material** :- Iron

**Rope Thickness** :- 10-15mm, 15-20mm

**Capacity** :- 0.5Ton, 1Ton, 1.5Ton

**Driven type** :- Manually

**Uses in** :- Industries

**Location** :- Worldwid

## Hydraulic Scissor Lift Table



PRODUCT DETAILS

**Business Type** :- Manufacturer, Exporter, Supplier

**Thickness** :- 5-10mm, 10-15mm

**Lifting Height** :- 10 Feet, 15 Feet

**Table Size** :- 1700x1080mm, 1800x1200mm, 2600x1800mm

**Usage** :- industrial

**Finish** :- Coated

**Capacity** :- 0.5 Ton To 2 Ton

**Location** :- Worldwide

[www.globeoverseaspvtltd.co.in](http://www.globeoverseaspvtltd.co.in)

## Hydraulic Manual Stacker



PRODUCT DETAILS

**Business Type :-** Manufacturer, Exporter, Supplier

**Type :-** Heavy Duty

**Capacity :-** 0.5 Ton To 2 Ton

**Driven Type :-** Hydraulic

**Warranty :-** 1 Year

**Usage :-** Moving Goods

**Finishing :-** Polished

**Features :-** Perfect design, Enhanced durability, Anti-corrosive

## Hydraulic Hand Pallet Truck



PRODUCT DETAILS

**Business Type :-** Manufacturer, Exporter, Supplier

**Color :-** Yellow

**Capacity :-** 1.5 Ton To 4 Ton

**Driven Type :-** Hydraulic

**Power Source :-** Hand Operated

**Number Of Wheels :-** 4 Wheels

**Wheel Material :-** PU, Nylon

**Location :-** Worldwide

## Monorail Travelling Trolley



PRODUCT DETAILS

**Business Type :-** Manufacturer, Exporter, Supplier

**Material :-** Metal

**Feature :-** Easy Operate, Moveable

**Capacity :-** 1Ton, 2Ton, 3Ton, 5Ton, 10Ton, 1Ton, 2Ton, 3Ton, 5Ton

**Power :-** 1-2kw, 2-4kw

**Driven Type :-** Manually

**Warranty :-** 1year

**Wheel Structure :-** Double Wheel, Four Wheel, Wheel Less

**Location :-** Worldwide



## CONTACT PERSON

Mr. Vipin Mittal



## DELHI OFFICE

B-9, DSIIDC Engineering Complex, Mangolpuri Industrial Area, Phase -1,  
New Delhi - 110083



## DELHI WORKS

F-76, Sector - 2, DSIIDC Industrial Area, Bawana, New Delhi - 110041



## HARYANA WORKS

Kewat No.646, Khasra No.178, Beri Kultana Road, Sampla, Distt. Rohtak,  
Haryana - 124501



## MOBILE NO.

+91-98-1162-8456, +91-98-1102-5113



## PHONE NO.

+91-011-46802215



## EMAIL ID

[goplseas@gmail.com](mailto:goplseas@gmail.com)



## ALT. EMAIL

[vmittal1979@gmail.com](mailto:vmittal1979@gmail.com)



## WEB SITE

[www.globeoverseaspvtltd.co.in](http://www.globeoverseaspvtltd.co.in)



## WEB PAGE

[www.exportersindia.com/globe-overseas-mangolpuri/](http://www.exportersindia.com/globe-overseas-mangolpuri/)

