



**GRAPHITE AND MINERAL PRODUCTS
GRS GRAPHITE PRIVATE LIMITED**

A Professional Graphite and Carbon Supplier for Foundry,
Steel Making & Friction Industry.

ISO 9001:2015



SINCE 1976

Mission

The company founded in the year 1976, was initially involved in trading of Graphite Powder. With time, active team work & perseverance of the fellow members has now its own manufacturing plants which has been able to successfully cater to demands of clients in India & Abroad. Constantly willing to challenge ourselves to be better day by day has been our top priority. With company's heads Mr. Rajeev Chowdhary and Mr. Sanjeev Chowdhary we are today one of the fastest growing company in the Eastern region.

born for graphite...

BEING GRATEFUL

Thank you very much for taking your precious time to browse our brochure!

The company founded in the year 1976, was initially involved in trading of Graphite Powder. With time, active team work & perseverance of the fellow members has now its own manufacturing plants which has been able to successfully cater to demands of clients in India & Abroad. Constantly willing to challenge ourselves to be better day by day has been our top priority. With company's heads Mr. Rajeev Chowdhary and Mr. Sanjeev Chowdhary we are today one of the fastest growing company in the Eastern region.

Our Sister Concerns.

- 1) M/s GRS Graphite Pvt. Ltd. (Engaged in supply of foundry minerals, chemicals and ferro alloys)
- 2) M/s Premier Industries (Engaged in manufacturing of Calcined Petroleum Coke in Barauni in Bihar)
Quantity Produced = 18000 tons P.A.

Owing to our sophisticated facilities we are able to retain ranges.

Industries we cater.

- Steel Plants.
- C.I. Foundry and Casting units.
- S.G. Iron/Ductile Iron manufacturers.
- Ingot Mould manufacturers.
- Foundry Chemicals and Flux manufacturers.
- Aluminum Industries.
- Pencil manufacturers.
- Refractories.
- Pig Iron Industries.
- Brake Lining.
- Lubricants.
- Carbon Brush.
- Graphite Crucible Manufacturers.

Our Infrastructure

Backed by an ultra-modern infrastructure, our organization is able to trade in a huge assortment of Graphites, Carburizers, Ferro Alloys and Foundry Minerals. Our organization has a state-of-the-art manufacturing and processing unit which enables us to process and refine the procured products. In addition we also have well-equipped testing labs, warehousing facility. We also spread a large portion of our infrastructure on the procuring, quarrying and extraction of the minerals, ores and metals from the mines. Another major contributor to our infrastructure is our committed workforce, which is aided with all the available amenities and helps us in reaching out to our clients and deliver them quality products.

PRODUCERS OF NATURAL CRYSTALLINE & AMORPHOUS GRAPHITE POWDER & FLAKES (UPTO 99% PURITY IN ALL MESH & SIZES)

Specification For Natural Graphite Powder & Flakes

FC (%) min	ASH(%) max	V.M(%) max	Mesh	Application
40-45	By Difference	1.5	-100 & -200	Graphite Paint (Both Water & Alcohol Base)
50-55	BY Difference	1.5	-100 & -200	Ingot Mould Manufacturers
60-65	By Difference	1.5	-100 & -200	Graphite Stopper Heads
70-75	By Difference	1.5	-100 & -200	Friction Material
80-85	By Difference	1.5	-100 & -200	Lubricants
90-95	By Difference	1.5	-100, -200 & -300	Pencil Manufacturers

Amorphous Graphite Powder

FC (%) min	ASH(%) max	V.M(%) max	Mesh	Application
70-75	BY Difference	2	-200 & -300	C.I. Foundry
80-85	BY Difference	2	-200 & -300	Steel Plant
90-95	BY Difference	2	-200 & -300	Refractories

Graphite Flakes

FC (%) min	ASH(%) max	V.M(%) max	Mesh	Application
80-85	By Difference	1.5	-20+50 -50+80 -20+80	Graphite Crucible Manufacturers
90-95	By Difference	1.5	-20+50 -50+80 -20+80	Carbon Brush, Graphite Rope & Sheet Manufacturers, Refractories & Copper Smelting



Recarburiser

Serial No.	Type	F.C (%) min	ASH (%) max	VM (%) max	S (%) max	Moisture (%) max	Application
1	Graphitized Petroleum Coke	99	0.5	0.5	0.03	0.5	Carbon Addition in S.G.Iron, Ductile Iron & Cast Iron
2	Graphitized Petroleum Coke	98.5	1	0.5	0.05	0.5	-Do-
3	Graphite Electrode Scrap	98.5	1	0.5	0.05	0.5	-Do-
4	Pitch Coke	96.5	1.5	2	0.5	0.5	-Do-
5	Calcined Petroleum Coke	98.5	1	0.5	0.8	0.5	-Do-
6	Carbon Additive	93	6	1	0.25	0.5	-Do-
7	Carbon Additive	90	9	1	0.35	0.5	-Do-

Electrically Calcined Anthracite

FC (%) min	ASH (%) max	VM(%) max	S(%) max	N(%) max	APPLICATION
90-96	3.5-9.5	0.5	0.18-0.25	0.20-0.25	Electrode Carbon Paste

Artificial Graphite Powder For Friction

FC (%) min	ASH (%) max	VM(%) max	S(%) max	R.D (g/cm ³)	APPLICATION
99	0.5	0.5	0.05	2-2.1	Brake Pads & Clutches

Minerals And Refractories

SLAG COAGULATOR → FLUORSPAR → ZIRCON SAND & FLOUR

SILLIMANITE SAND & FLOUR → CHROMITE SAND →

BENTONITE POWDER → LOW ASH COAL DUST POWDER.

(All the above Materials are available in Lumps, Fines & Granules Form)

Ferro Alloys

Ferro Silicon

Si (%) min	Al (%) max	P (%) max	S (%) max	C (%) max
70	1.25	0.05	0.05	0.20

Ferro Manganese

Mn (%) min	Si (%) max	P (%) max	S (%) max	C (%) max
70	1.5	0.50	0.05	6-8

Ferro Chrome

Cr (%) min	Si (%) max	P (%) max	S (%) max	C (%) max
60	2-4	0.05	0.05	6-8

Silico Manganese

Mn (%) min	Si (%) max	P (%) max	S (%) max	C (%) max
60	13-17	0.30	0.05	2-2.5

FERRO MOLYBDENUM | FERRO VANADIUM | FERRO BORON | FERRO TITANIUM

(All the above Materials are available in Lumps, Fines & Granules Form)



Certificate of Registration

Issued to

GRAPHITE & MINERAL PRODUCTS

Carried out at following site:

44/1 A ROAD, BAMBUNGACHI, SALKIA, HOWRAH-71106,
WEST BENGAL, INDIA

for their

QUALITY MANAGEMENT SYSTEM

ISO 9001:2015

Scope of Activities covered by this Registration:

MANUFACTURE & SUPPLY OF INDUSTRIAL MINERALS, REFRACTORIES & FERRO ALLOYS
AND SPECIALIST IN GRAPHITE POWDER OF ALL GRADES

Certificate No.: YGNMP110616Q4474
Date of Issue: 11/06/2015
Date of Expiry: 10/05/2019
1st Surveillance on or before: 10/05/2017
2nd Surveillance on or before: 10/05/2018

Authorized by
Chairman / Director

The approval is subject to the company maintaining its system to the required standards, which will be monitored by VRC Services Inc. The above audited accredited scope shall be restricted by KAN rules & regulations and unaccredited scope shall be monitored by VRC Services Inc. management actions registration.




VRC SERVICES INC.
11-105, 1st Floor, Sakinaka Park, Gole Market
Mumbai, Location-220004, G.P., Juhu
Mumbai-400049, India. www.vrcs.com



Certificate of Registration

Issued to

GRS GRAPHITE PRIVATE LIMITED

Carried out at following site:

8, STATION ROAD, LILUAH, HOWRAH - 711204,
WEST BENGAL, INDIA

for their

QUALITY MANAGEMENT SYSTEM

ISO 9001:2015

Scope of Activities covered by this Registration:

MANUFACTURE & SUPPLY OF INDUSTRIAL MINERALS, CARBURIZERS,
REFRACTORIES & FERRO ALLOYS

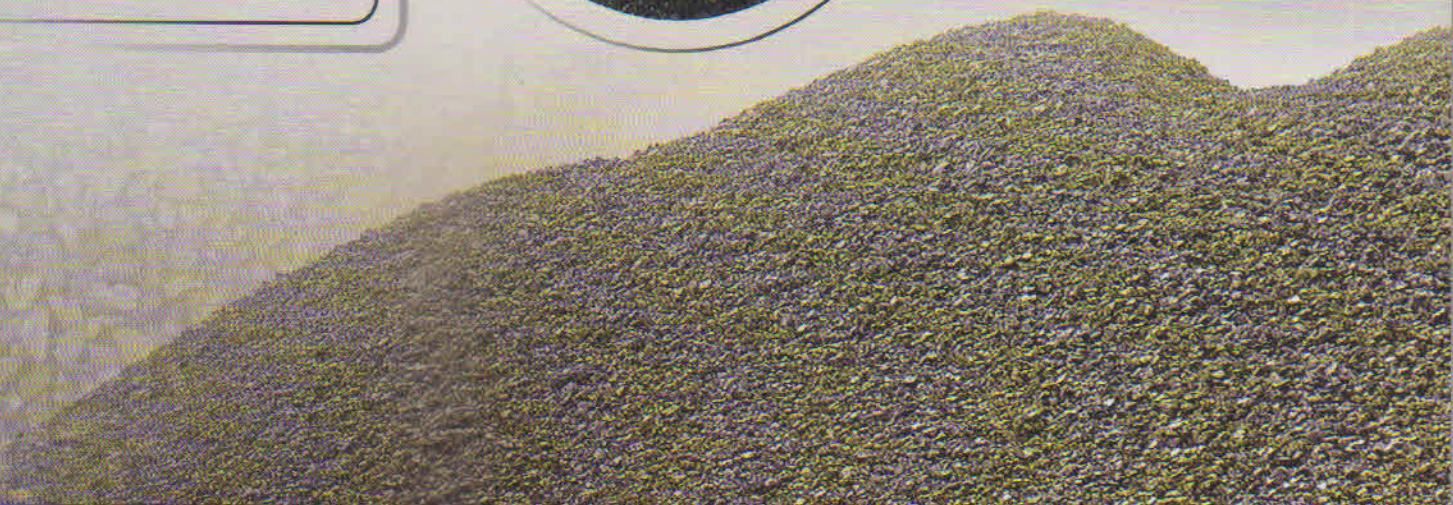
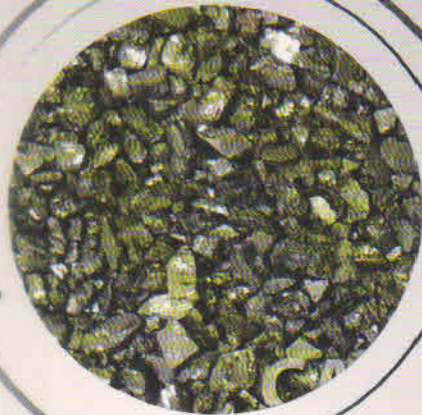
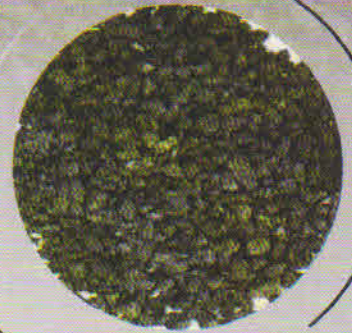
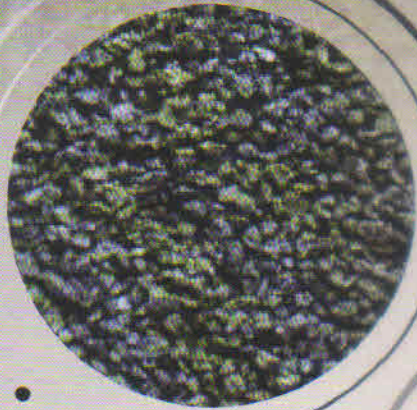
Certificate No.: VGGPL110616Q4475
Date of Issue: 11/06/2015
Date of Expiry: 10/05/2019
1st Surveillance on or before: 10/05/2017
2nd Surveillance on or before: 10/05/2018

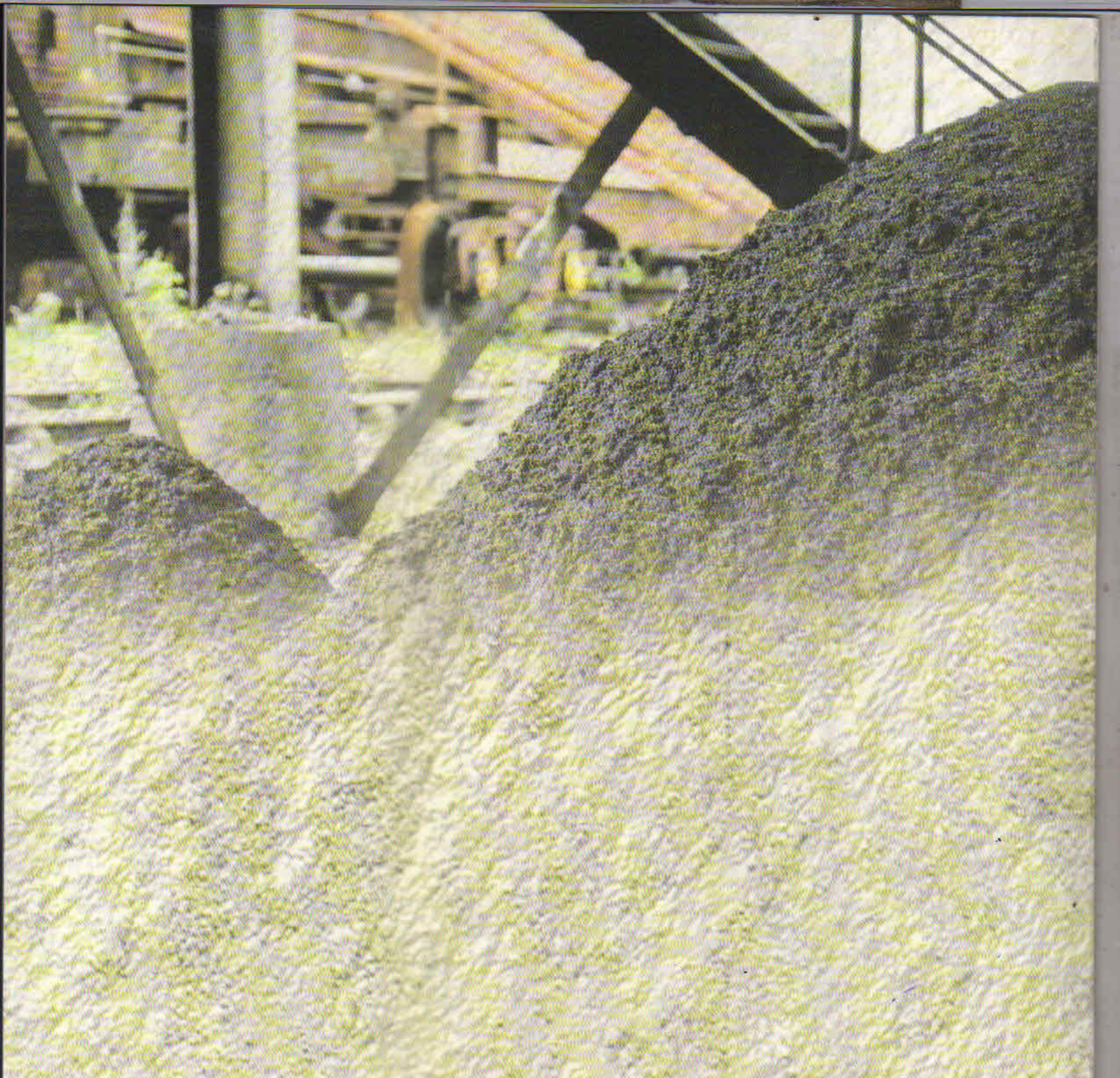
Authorized by
Chairman / Director

The approval is subject to the company maintaining its system to the required standards, which will be monitored by VRC Services Inc. The above audited accredited scope shall be restricted by KAN rules & regulations and unaccredited scope shall be monitored by VRC Services Inc. management actions registration.




VRC SERVICES INC.
11-105, 1st Floor, Sakinaka Park, Gole Market
Mumbai, Location-220004, G.P., Juhu
Mumbai-400049, India. www.vrcs.com





CITY OFFICE :

8, Lyons Range, Ground Floor.

Kolkata-700001.

West Bengal . India.

Phone : +91 33 2230-5613.

Email : graphitemineral@gmail.com

: grsgraphitepvtltd@gmail.com

HEAD OFFICE :

44/1,"A" Road, Bamungachi.

Salkia,Howrah-711106 .

West Bengal . India.

Phone: ++91 33 2645-3157/6541-4363.

(M)+91 9836055381/+91 9831088378.

Email : graphitemineral@gmail.com

: grsgraphitepvtltd@gmail.com

Website :www.indiamart.com/gmp

All the above Materials are available at our **Mumbai** and **Chennai** Warehouse