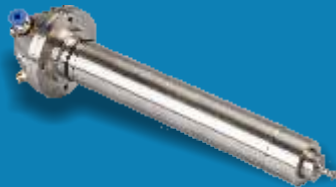


# WaveNxD Technologies Ultrasonic Spray Nozzle 60 KHz Nozzle (Conical/ Flat / Torch)



## Target Spray on Specific Area and of Specific Type



### Specifications

| Sr. No. | Description                                                            | Figures                                        |
|---------|------------------------------------------------------------------------|------------------------------------------------|
| 1       | Operating frequency                                                    | 60 KHz                                         |
| 2       | Median drop diameter                                                   | 40 $\mu\text{m}$                               |
| 3       | Maximum flow rate (Water)                                              | 5 ml / min.                                    |
| 4       | Maximum power consumption                                              | 20 watts                                       |
| 5       | Normal power consumption (Subject to flow rate and solution viscosity) | 2 to 7 watts                                   |
| 6       | Weight                                                                 | 1000 gm                                        |
| 7       | Operating temperature Range                                            | 15 $^{\circ}\text{C}$ to 55 $^{\circ}\text{C}$ |
| 8       | Transducer material                                                    | Titanium                                       |
| 9       | Transducer enclosure                                                   | SS316                                          |
| 10      | Liquid inlet                                                           | SS316                                          |
| 11      | RF Input ( output from enozzle drive system)                           | BNC connector                                  |
| 12      | O ring (Isolate transducer from external environment)                  | Viton®                                         |

Ultrasonic spray nozzle : Flat

|                     |                           |
|---------------------|---------------------------|
| OPERATING FREQUENCY | 60KHz<br>120KHz<br>180KHz |
|---------------------|---------------------------|

Ultrasonic spray nozzle : Conical

|                     |                           |
|---------------------|---------------------------|
| OPERATING FREQUENCY | 60KHz<br>120KHz<br>180KHz |
|---------------------|---------------------------|

Ultrasonic spray nozzle : Torch

|                     |                           |
|---------------------|---------------------------|
| OPERATING FREQUENCY | 60KHz<br>120KHz<br>180KHz |
|---------------------|---------------------------|

### Specifications

| Sr. No. | Description                                           | Figures                                                     |
|---------|-------------------------------------------------------|-------------------------------------------------------------|
| 1       | Operating frequency                                   | 60 KHz $\pm 10\%$                                           |
| 2       | Maximum power drive                                   | 20 watts                                                    |
| 3       | Maximum operating temperature                         | 85 $^{\circ}\text{C}$                                       |
| 4       | Enclosure (Schneider Electric President Systems Ltd.) | S42 2U/42T/245                                              |
| 5       | RF output                                             | Bulk head BNC connector female                              |
| 6       | Technology                                            | Digital synthesis                                           |
| 7       | LCD display                                           | Alphanumeric 16 X 2                                         |
| 8       | Parameter set and menu navigation                     | Menu switches                                               |
| 9       | Power on switch                                       | 16 Amps, Elcom®                                             |
| 10      | AC power source operating voltage range               | 90 to 270 Volts                                             |
| 11      | Fuse slow blow                                        | 1 Amps + extra 1.5 amps                                     |
| 12      | 3 Pin Mains chord                                     | 5 Amps, Elcom®                                              |
| 13      | Power pack                                            | $\pm 12$ volts, 3 Amps, with EMI filter<br>Surge protection |
| 14      | RS 232C serial communication port                     | Optional                                                    |
| 15      | RF coaxial cable (BNC to BNC)                         | RG316, 50 $\Omega$ , 2 meters                               |
| 16      | Power pack to eNozzle drive system 3 core DC cable    | 15 Amps, 1 meter                                            |
| 17      | Weight                                                | 1.2Kg                                                       |

## eNozzle drive system



 **WaveNxD**  
Technologies Pvt. Ltd.

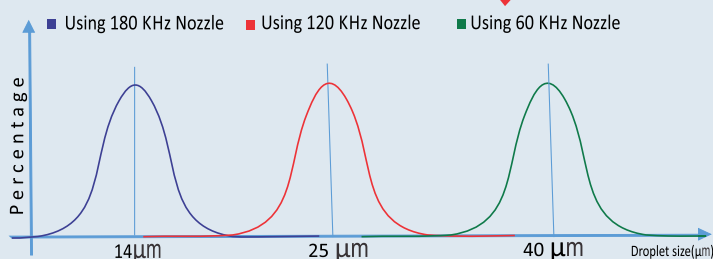
Office: 2823/15, B Ward,  
Mahalaxmi Nagar, Kolhapur, 416012

Works: 1243/8, Shivaji Udyamnagar,  
Kolhapur. 416008

info@wavenxd.com

<https://www.wavenxd.com>

+91 9881233102



Nano Coating/Spray Pyrolysis



Ultrasonic Atomizer spray drying



PCB Spray Fluxing

The Nozzle operating frequency of 180 KHz gives average droplet size of 14  $\mu\text{m}$ , 120 KHz gives average droplet size of 25  $\mu\text{m}$  and 60 KHz gives average droplet size of 40  $\mu\text{m}$ . With eNozzle drive system you enjoy power of deriving droplet sizes matching to your research/ process/ production needs.

+91 98812 33102 For Online Product Demonstration |  <https://www.youtube.com/@wavenxd>