

LOCATED IN JAJPUR (ODISHA), REECOCEFE INFRASTRUCTURE PRIVATE LIMITED IS A RELIABLE CONSTRUCTION SOLUTIONS PROVIDER THAT OPERATES WITH AN AIM TO BECOME THE LARGEST MULTI-PRODUCT BUILDING MATERIALS BRAND IN THE WORLD. THE PRODUCT PORTFOLIO OF THE COMPANY CONSISTS OF A WIDE RANGE OF CONSTRUCTION MATERIALS, BATHROOM FITTINGS, HARDWARE FITTINGS, INDUSTRIAL CHEMICALS, INDUSTRIAL MINERALS, ETC. WE WORK TOWARDS TRANSFORMING THE ECOSYSTEM THROUGH SCALING INNOVATION AND LEVERAGING TECHNOLOGY.



# ABOUT US

Located in Jaipur (Odisha), Reecocefe Infrastructure Private Limited is a reliable construction solutions provider that operates with an aim to become the largest multi-product building materials brand in the world. The product portfolio of the company consists of a wide range of construction materials, bathroom fittings, hardware fittings, industrial chemicals, industrial minerals, etc. We work towards transforming the ecosystem through scaling innovation and leveraging technology.

We are striving for acquiring a distinguished position in the market and to build a unique model to cater to our clients. We operate in both the B2B and B2C universes and are capable to cater to a wide range of clients with unique requirements. All of our products are procured from trusted and certified vendors in the industry. Thus, we give the assurance that the offered products are at par with the required quality standards and norms. We can meet any specification criteria while guaranteeing full compliance with all protocols.

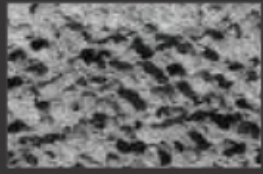
We strive hard to establish a strong Pan-India presence as well as cater to customers overseas. With the support of our dedicated and hardworking team, we are winning the trust of our clients worldwide. Our team is aware of the individual needs of our clients and ensures that they are served in an appropriate manner.

At Reecocefe Infrastructure Private Limited, we believe wholeheartedly in delivering the best to our clients and obtaining their complete satisfaction. We are passionate to provide the best construction solutions to our clients and enable them to build better, faster, and smarter.





# OUR PRODUCTS



AIR ENTRAINING CEMENT



BLAST FURNACE SLAG CEMENT



CONCRETE SLEEPER GRADE CEMENT



CONCRETE SLEEPER GRADE CEMENT



Concrete Sleeper Grade Cement



EXTRA RAPID HARDENING CEMENT



HIGH ALUMINA CEMENT



HYDROPHOBIC PORTLAND CEMENT



LOW HEAT CEMENT



MASONRY CEMENT



OIL WELL CEMENT



ORDINARY PORTLAND CEMENT



PORTLAND POZZOLANA CEMENT



PORTLAND SLAG CEMENT



PORTLAND SLAG CEMENT



QUICK SETTING CEMENT



RAPID HARDENING CEMENT



REDISSET CEMENT



SAND CEMENT



SULFATES RESISTING CEMENT



VERY HIGH STRENGTH CEMENT



WHITE CEMENT



CHALKBOARD PAINT



EGGSHELL PAINT



ENAMEL PAINT



LATEX BASED PAINT



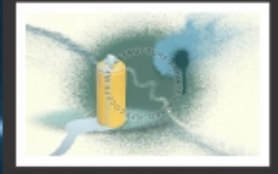
SATIN PAINT



Oil Paint



SEMI GLOSS PAINT



SPRAY PAINT



WATER BASED PAINT



LIGHTWEIGHT CONCRETE BLOCKS



GLASS FIBER REINFORCED CONCRETE



STEEL FIBER REINFORCED CONCRETE



SYNTHETIC FIBER REINFORCED CONCRETE



ACCELERATED SET MIX CONCRETE



CENTRAL MIXED CONCRETE



FLOWABLE FILL-CLSM MIX CONCRETE



HIGH STRENGTH CONCRETE



INSULATING CONCRETE



# OUR PRODUCTS



INSULATING CONCRETE



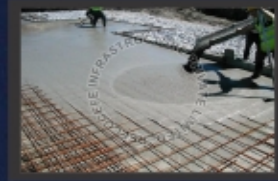
PERVIOUS MIX CONCRETE



CONCRETE SLEEPER GRADE CEMENT



SELF COMPACTING CONCRETE



SELF CONSOLIDATING CONCRETE



SHRINK MIXED CONCRETE



STANDARD READY MIX CONCRETE



TRANSIT MIXED CONCRETE



ANGULAR AGGREGATES



ARTIFICIAL AGGREGATES



COARSE AGGREGATES



ELONGATED AGGREGATES



FINE AGGREGATES



FLAKY AGGREGATES



FLAKY AND ELONGATED AGGREGATES



Granite Aggregates



GRAVEL AGGREGATES



IRREGULAR AGGREGATES



LIGHT WEIGHT AGGREGATES



LIMESTONE AGGREGATES



VERY HIGH STRENGTH CEMENT



ROUNDED AGGREGATES



STANDARD & NORMAL AGGREGATES



EGGSHELL PAINT



BALLAST AND TRAP STONE



BASALT STONE



CHALK STONE



GNEISS STONE



KANKAR STONE



LATERITE STONE



LIMESTONE STONE



MARBLE STONE



METAMORPHIC STONE



MURUM STONE



ONYX STONE



SEMI PRECIOUS STONE



SLATE STONE



TRAVERTINE STONE



AFRICAN RED GRANITE STONE



ALASKA WHITE GRANITE STONE



# OUR PRODUCTS



AMAZONITE GRANITE STONE



ANDROMEDA GRANITE STONE



ANGOLA SILVER GRANITE STONE



AREZZO GRANITE STONE



BELLINI GRANITE STONE



BENGAL BLACK GRANITE STONE



CRYSTAL WHITE GRANITE STONE



DORATO VALMALENCO GRANITE STONE



EMERALD PEARL GRANITE STONE



GIALLO VENEZIANO GRANITE STONE



IVORY BROWN GRANITE STONE



PIETRA DEL CARDOSO GRANITE STONE



ROSA BETA GRANITE STONE



ROSSO SANTIAGO GRANITE STONE



SAN FRANCISCO GREEN GRANITE STONE



SARDINIAN WHITE GRANITE STONE



TAN BROWN GRANITE STONE



ANNEALED GLASS



CHEMICALLY STRENGTHENED GLASS



CHROMATIC GLASS



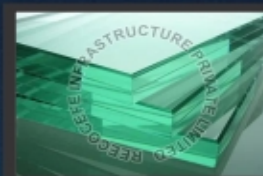
EXTRA CLEAN GLASS



FLOAT GLASS



HEAT STRENGTHENED GLASS



LAMINATED GLASS



SHATTERPROOF GLASS



TINTED GLASS



TOUGHENED GLASS



CONCRETE ADMIXTURES



CONCRETE CURING COMPOUND



EPOXY COATING POWDER



EPOXY GROUT



MOULD RELEASING AGENTS



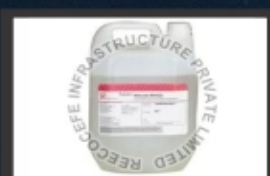
OIL BASED FORM RELEASE AGENT



ORGANIC BASED FORM RELEASE AGENT



POLYMER BONDING AGENT



PROTECTIVE AND DECORATIVE AGENT



REBAR COATING POWDER



RESIN BASED FORM RELEASE AGENT



WATER BASED FORM RELEASE AGENT



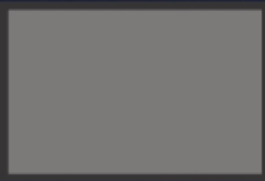
ALASKA WHITE GRANITE STONE



# OUR PRODUCTS



ANTIMONY POWDER



ANDROMEDA GRANITE STONE



BARIUM LUMPS



BAUXITE ORE



BRONZE RAW ORE



CERIUM MISCH METAL



GYPSUM POWDER



IRON ORE



LEAD OXIDES



MAGNESIUM POWDER



MANGANESE LUMPS



MANGANESE POWDER



MOLYBDENUM LUMPS



MOLYBDENUM POWDER



PERLITE LUMPS



PERLITE POWDER



SELENIUM GRANULES



TUNGSTEN ORE



DOLOMITE POWDER



METALLIC IRON ORE



ACIDIC RAMMING MASS



Feldspar Lumps



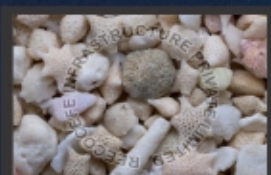
POTASH FELDSPAR



SODIUM FELDSPAR



ARTIFICIAL SAND



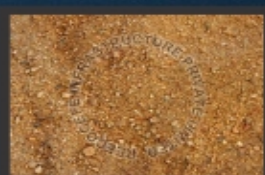
BIOGENIC SAND



BLACK SAND



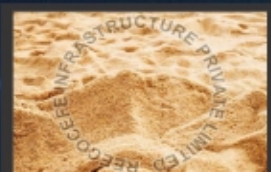
Brick Sand



COARSE SAND



CONCRETE SAND



CONTINENTAL SAND



CORAL SAND



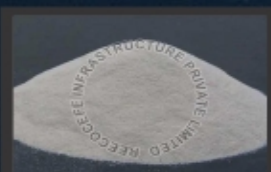
FILL SAND



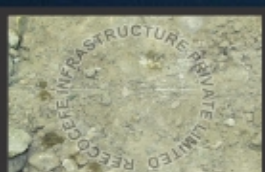
FINE SAND



GARNET SAND



GLASS SAND



REBAR COATING POWDER



GREEN SAND



GYPSUM SAND



HEAVY MINERAL SAND



# OUR PRODUCTS



IMMATURE SAND



LIGHT BROWN SAND



LITHIC SAND



M-SAND



MIXED CARBONATE SILICATE SAND



Moderately Coarse Sand



OLIVINE SAND



OOID SAND



PINK SAND



PIT SAND



PLASTER SAND



RED ORANGE SAND



RIVER SAND



SEA SAND



SILICA SAND



UTILITY SAND



VOLCANIC SAND



WHITE GREY SAND



WHITE SAND



BATH TUB



BATHROOM FAUCETS



CERAMIC URINALS



PEDESTAL WASH BASINS



SHOWER HEAD



TABLE TOP WASH BASINS



WALL MOUNTED CLOSET



WATER CLOSET



Aluminium Cables



COARSE SAND



COPPER CABLES



COPPER WIRE



FLY ASH BRICKS



RED BRICKS



WIRE COAT BRICKS



10MM TMT STEEL BAR



16MM TMT STEEL BAR



20mm TMT Steel Bar



25MM TMT STEEL BAR



8MM TMT STEEL BAR



10MM TMT STEEL BAR



# CONTACT US



## **Mr. Abinash Panda**

House No 364 Pravakarpur Ballabhgarh  
Dhabaleswar Temple, Jaipur, Odisha, India - 755001

**Call Us :** +91-8079822122

**Email :** [business@reecocefe.com](mailto:business@reecocefe.com)

**Web Address :** [www.reecocefeinfrastructure.in](http://www.reecocefeinfrastructure.in)

**Web Page :** [www.exportersindia.com/reecocefe-infrastructure](http://www.exportersindia.com/reecocefe-infrastructure)