



# DEEPSHIKHA

Castings Pvt. Ltd.



Deepshikha Castings Pvt. Ltd. is manufacturer of Centrifugally Cast (spun) Iron Socket & Spigot Pipe for transporting water, gas, storm drains, waste sewage. The efficient and experienced technical team of the company is dedicated to meet best quality standards.

Deepshikha is manufacturing Centrifugally Cast Iron Pressure Pipe with metal molds, molten metal is poured into the mold to uniformly distribute metal over the interior of the mold surface by the centrifugal force generated.

## Centrifugally Cast (Spun) Socket & Spigot pipe

(Confirms to IS 1536:2001)

### MECHANICAL PROPERTIES: AS PER IS 1536:2001

Size-DN (mm)	Ring Test (Min)	Hardness (Max)
CI Pipe 80-200 mm	390 Mpa	230 HBS

### CI PIPE RANGE

SIZE-DN (mm)	LENGTH	CLASS OF PIPE	JOINT
80-200	Available in Mix & standard length up to 4.0 Mtr.	LA, A, B	Push-On-Joint

Dimensions and Tolerances: As per IS 1536:2001

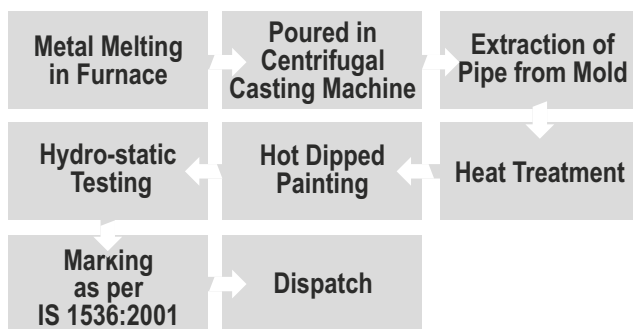
### HYDROSTATIC PRESSURE TEST

DN (mm)	CLASS	Hydrostatic Pressure
80-200	LA	3.5 Mpa
80-200	A	3.5 Mpa
80-200	B	3.5 Mpa

### APPLICATIONS

The cast iron socket & spigot pressure pipes are usable as best carries of-

- Drinking Water, Gas and Sewage
- Chemical Plant and Industrial Purposes
- Ash Handling and Plumbing
- Water for Irrigation Purposes.
- Pumping stations and Underground Mains
- River Crossing, Sandy area, etc.



### OUR MANUFACTURING PRODUCT RANGE

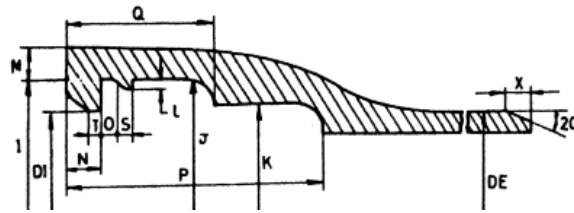
C.I. & D.I. Double Flanged Pipes & Fittings (ISI Mark)	Centrifugally Cast (Spun) Iron Pressure Pipe IS:1536(ISI Mark)	'DEEPSHIKHA' Cast Iron Earthing Electrode	Cast Iron Manhole Cover	Engineering Castings	Cast Iron Kitchen Utensils

## SPECIAL ASPECTS ABILITY OF OUR C. I. PIPES

- Ability to with-stand High Pressure
- High Tensile Strength
- Easy Machinability
- Low Maintenance Cost
- Easy Handling & Laying.

## OUR PRODUCT RANGE

- ▶ Centrifugally Cast (Spun) Iron Pressure Pipe (IS:1536-ISI Mark).
- ▶ Centrifugally Cast (Spun) Iron Double Flanged Pressure Pipe (IS:1536-ISI Mark).
- ▶ Ductile Iron Double Flanged Pipes (IS:8329-ISI Mark).
- ▶ Cast Iron Fittings & Specials As per IS:1538 CI Collar, Adaptor, CI Dismantle Joint.
- ▶ Cast Iron Earthing Pipes and Manhole Cover and Frame
- ▶ Cast Iron Agriculture Equipment parts like Flywheel, Pulverizer, Rice Mill, etc.
- ▶ Cast Iron Engineering Castings for various sector as per customer requirements.



**DIMENSIONS OF SOCKETS & SPIGOT PIPES  
FOR PUSH-ON-JOINTS AS PER IS 1536:2001**

Nominal Diameter	Barrel		Socket											
	DN	DE	X <sub>(Min)</sub>	DI	P	Q	I	J	K	N <sub>(Min)</sub>	O	S	T	L
80	95	9	99	89	52	121	116	102	12	5.5	5	4	3	10.8
100	115	9	119	92	52	141	136	122	12	5.5	5	4	3	11.3
150	167	9	171	94	52	193	188	174	12	5.5	5	4	3	12.7
200	219	9	223	102	60	248	242	226	15	6.5	6	5	3.5	14

### SOCKET & SPIGOT PIPES CLASS- LA

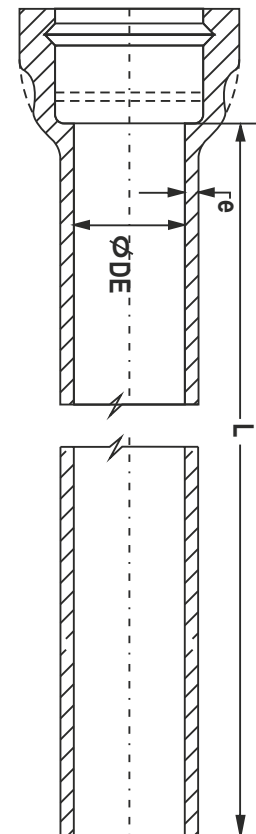
Nominal Diameter DN mm	DE	e mm	Standard Working Length in Mtr	
			3.66M	4M
80	95	7.2	3.66M	4M
100	115	7.5	3.66M	4M
150	167	8.3	3.66M	4M
200	219	9.2	3.66M	4M

### SOCKET & SPIGOT PIPES CLASS- A

Nominal Diameter DN mm	DE	e mm	Standard Working Length in Mtr	
			3.66M	4M
80	95	7.9	3.66M	4M
100	115	8.3	3.66M	4M
150	167	9.2	3.66M	4M
200	219	10.1	3.66M	4M

### SOCKET & SPIGOT PIPES CLASS- B

Nominal Diameter DN mm	DE	e mm	Standard Working Length in Mtr	
			3.66M	4M
80	95	8.6	3.66M	4M
100	115	9.0	3.66M	4M
150	167	10.0	3.66M	4M
200	219	11.0	3.66M	4M



**DEEPSHIKHA**  
Castings Pvt. Ltd.  
Deepshikha- The Water line solutions  
An ISO 9001-2015 certified Company



**Corporate Office:**  
B- 2, 623/A, 'Chandradina',  
Mehadia Square, Chhoti Dhantoli,  
Nagpur- 440012  
Mob: 9822474131, 7219612530,  
9822558131  
Email- deepshikha\_castings@yahoo.in

**Works:**  
116/1, Mouza- Nagalwadi,  
Near Waddhamna, Amravati road  
Tah- Hingna, Nagpur- 440023



[www.deepshikhacastings.com](http://www.deepshikhacastings.com)  
[www.deepshikhacastings.in](http://www.deepshikhacastings.in)

