

KEEP YOUR LOVED ONES SECURE *with...*



Centrifugally Cast Iron
DEEPSHIKHA EARTHING PIPE (ELECTRODE)
As per : IS 3043 Code of Practice



ERDA TESTED



WITHSTAND CURRENT CARRYING CAPACITY OF 125kAp



DEEPSHIKHA
Castings Pvt. Ltd.
Deepshikha- The Earthing solution
An ISO 9001-2015 certified Company



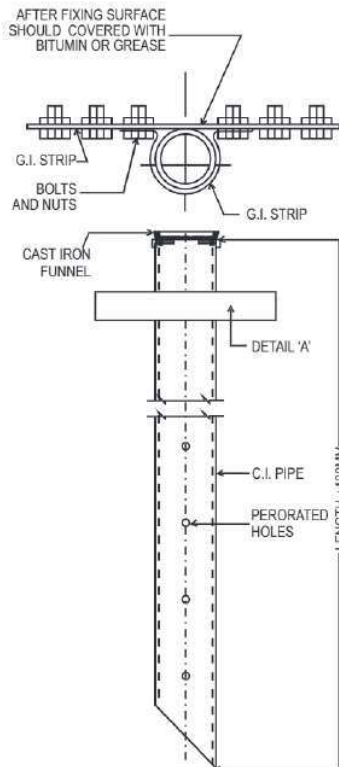
DEEPSHIKHA
Castings Pvt. Ltd.

Deepshikha is manufacturing Centrifugally Cast Iron Pipe with metal molds, molten metal is pour into the mold to uniformly distributed metal over the interior of the mold surface by the centrifugal force generated. We are enclosing attachments like, **Single Flange, Hot Dip Galvanized Clamp, Cast Iron Funnel with Casted Mesh, Alternate Hole & Taper Cut** along with **Accessories, Back Fill Compound & Earth Pit Covers/ Manhole Covers with Frame** in various sizes as per drawing specification for grounding Electrical Systems. Our team also acquired the much needed exposure of work and technical know-how to provide superior quality & timely services to our customers.



MANUFACTURING PROCESS

- ▶ METAL MELTING ▶ SPINNING ▶ ANNEALING
- ▶ DRILLING ON EXTERNAL SURFACE OF PIPE
- ▶ ASSEMBLY OF FUNNEL & CLAMP



DIMENSION CHART

LT EARTHING							HT EARTHING						
DN	OD	THICKNESS	LENGTH				DN	OD	THICKNESS	LENGTH			
75	82	3.5	1800	2000	2500	2900	100	114	7	2000	2500	2750	3000
100	108	4.0	1800	2000	2500	2900	100	126	10	2000	2500	2750	3000
150	160	5.0	1800	2000	2500	2900	100	126	13	2000	2500	2750	3000
							150	170	10	2000	2500	2750	3000

*All dimension are in mm
*Tolerance applicable as per relevant standard.
*We also provide Earthing Pipes in Customized Length as per Customer Requirement.





WHY GROUNDING ELECTRICAL CURRENTS IS SO IMPORTANT ?

- ▶ Protection of electrical system from overload current.
- ▶ Provide least resistance path to leakage/overload current between the system and earth.
- ▶ Protect human life from getting electrocuted.
- ▶ Provide least resistance path to the lightning to pass to ground.
- ▶ The support of soil (Earth), if not suitable then it is made suitable by reconditioning with back fill compound & cover with earth pit cover. i.e. To prevent contamination at earth pit top.

SPECIAL ATTACHEMENTS

- ▶ Single Flange ▶ Hot Dip Galvanized Clamp ▶ Cast Iron Funnel (with Casted Mesh)
- ▶ Alternate Hole & Taper Cut (along With Accessories Like Back Fill Compound & Earth Pit Covers Manhole Covers with Frame).

BENEFITS / ADVANTAGES

- ▶ Higher surface area of contacts ▶ Durable and reliable ▶ Uniform current dissipation
- ▶ Excellent connectivity and conductivity ▶ Corrosion resistance ▶ Easy installation
- ▶ Environment eco-friendly ▶ Cost Effective.



DIFFERENT TYPES OF DEEPSHIKHA EARTHING PIPE (Electrode)



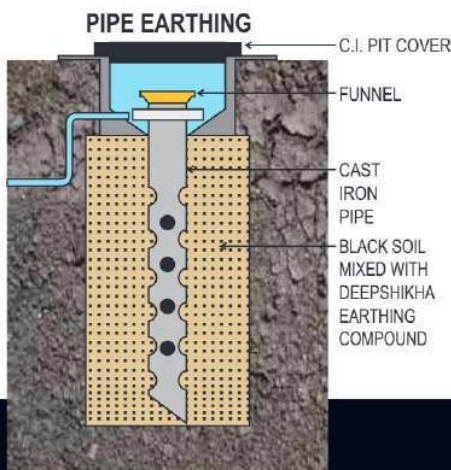
With G.I. Clamp (HDG)

With Single Flange

With G. I. Clamp (HDG)
& C. I. Funnel

With G. I. Clamp (HDG),
Socket & Jali

With G. I. Clamp (HDG),
& Jali



INSTALLATION PROCESS

- ▶ Piling ▶ Inserting Pipe in-to the pile ▶ Back Filling in-to the pile around pipe
- ▶ Preparing Earth Pit with Concrete ▶ Closing with Manhole Cover
- ▶ Watering Arrangement.

APPLICATIONS

- ▶ Power generation plants ▶ Wind & Solar energy plant
- ▶ Transmission & Distribution ▶ Mines Industries
- ▶ Telecommunication towers ▶ Building sites ▶ Medical establishments
- ▶ Commercial & Domestic, Standby & Other private generating plants
- ▶ Generators installation etc.

EARTHING GROUND ENHANCING COMPOUND

Our advanced range of electrodes come with DEEPSHIKHA EARTHING COMPOUND suitable for unique requirement of our customers. These are considered to be ideal backfill materials filled for an earthing system. On adding water, this compound is easily compacted and has the capability of absorbing moisture up to 14th times its dry volume. It improves conductivity & having quality of long-time capacity of retention or absorption of moisture, high conductivity & non corrosiveness completely fulfilling the purpose of back-filling in electrodes. Earthing chemical compound reduces the soil resistance and further creates a low resistance zone around the electrode.

Previously, salt and charcoal were used as filling material in conventional earthing but it use to corrode the earthing after sometime. But with the latest development in earthing, we have introduced a specially developed, natural and eco-friendly material with improved properties.

“DEEPSHIKHA EARTHING COMPOUND” has the capacity to absorb & retain moisture around the electrodes. Thus, protects the entire earthing system.



DEEPSHIKHA
Earth Pit Cover



DEEPSHIKHA
Earthing Compound



DEEPSHIKHA
C. I. Earthing Plate



HDG Earthing Strips



HDG Earthing Nut-Bolt

ACCESSORIES



OUR PRODUCT RANGE

- ▶ Centrifugally Cast (Spun) Iron Pressure Pipe (IS:1536-ISI Mark).
- ▶ Centrifugally Cast (Spun) Iron Double Flanged Pressure Pipe (IS:1536-ISI Mark).
- ▶ Ductile Iron Double Flanged Pipes (IS:8329-ISI Mark).
- ▶ Cast Iron Fittings & Specials As per IS:1538 and CI Collar, Adaptor, CI Dismantle Joint.
- ▶ Cast Iron items for Smart City Developments like. Cast Iron Bench, Letter Box, Foot Steps, Surface Box, etc.
- ▶ Cast Iron engineering castings for various sector as per customer requirements.



DEEPSHIKHA
Castings Pvt. Ltd.
Deepshikha- The Earthing solution
An ISO 9001-2015 certified Company

Corporate Office:
B- 2, 623/A, 'Chandradina',
Mehadia Square, Chhoti Dhantoli,
Nagpur- 440012
Mob: 9822474131, 7219612530,
9822558131
Email- deepshikha_castings@yahoo.in

Works:
116/1, Mouza- Nagalwadi,
Near Waddhamna, Amravati road
Tah- Hingna, Nagpur- 440023

www.deepshikhacastings.com
www.deepshikhacastings.in