

# **SUPA**FLEX



# Cable Lugs & Cord End Terminals

## About Cable Lugs & Cord End Terminals

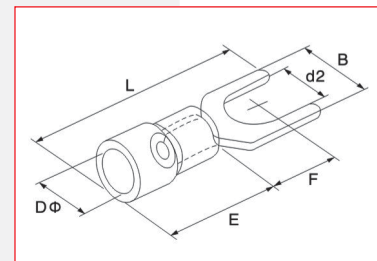
- Nylon insulated Copper Terminals
- CE, ROHS, Flame Retardant

▶ [www.supaflex.co.in](http://www.supaflex.co.in)

CE  RoHS

## Insulated Fork Terminal

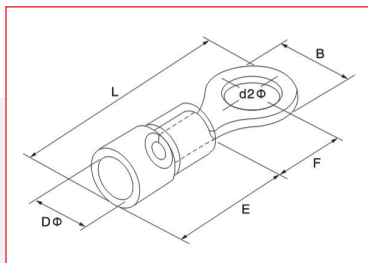
Item No	USA Bolt No.	Bolt Dia. d2 (mm)	Dimension (mm)				Dφ	Color	Description
			B	F	L	H			
SV 1.25-3	#4	3.2	5.7	4.95	17.8		● Red	Lead Section: 0.5-1.5 mm <sup>2</sup> (A.W.G. 22~16) Max Current: I <sub>max</sub> =19A Material: Copper Insulation: Nylon Thickness: 0.7 mm	
SV 1.25-3.5S	#6	3.7	5.7	6.5	21.2				
SV 1.25-3.5L	#6	3.7	6.4	6.5	21.2				
SV 1.25-4S	#8	4.3	6.4	6.5	21.2				
SV 1.25-4M	#8	4.3	7.2	6.5	21.2				
SV 1.25-4L	#8	4.3	8.1	6.5	21.2	10.0			
SV 1.25-5S	#10	5.3	8.1	6.5	21.2				
SV 1.25-5L	#10	5.3	9.5	6.5	21.2				
SV 1.25-6S	1/4	6.5	9.5	6.5	21.2				
SV 1.25-6L	1/4	6.5	12.0	11.0	27.2				
SV 1.25-8	5/16	8.5	14.0	12.0	29.2		● Blue	Lead Section: 1.5-2.5 mm <sup>2</sup> (A.W.G. 16~14) Max Current: I <sub>max</sub> =27A Material: Copper Insulation: Nylon Thickness: 0.8 mm	
SV 2-3	#4	3.2	5.7	6.5	21.2				
SV 2-3.5S	#6	3.7	5.7	6.5	21.2				
SF2-3.5L	#6	3.7	6.4	6.5	21.2				
SV 2-4S	#8	4.3	6.4	6.5	21.2				
SV 2-4M	#8	4.3	7.2	6.5	21.2				
SV 2-4L	#8	4.3	8.1	6.5	21.2	10.0			
SV 2-5S	#10	5.3	8.1	6.5	21.2				
SV 2-5L	#10	5.3	9.5	6.5	21.2				
SV 2-6S	1.4	6.5	9.5	6.5	21.2				
SV 2-6L	1.4	6.5	12.0	11.0	27.2		● Black	Lead Section: 2.5-4 mm <sup>2</sup> (A.W.G. 14~12) Max Current: I <sub>max</sub> =37A Material: Copper Insulation: Nylon Thickness: 1.0 mm	
SV 2-8	5/16	8.5	14.0	12.5	29.2				
SV 3.5-3.5	#6	3.7	8.0	7.0	25.3				
SV 3.5-4	#8	4.3	8.0	7.0	25.3				
SV 3.5-5S	#10	5.3	8.0	7.0	25.3	13.0			
SV 3.5-6S	1/4	6.5	9.0	7.5	26.5		● Yellow	Lead Section: 4-6 mm <sup>2</sup> (A.W.G. 12~10) Max Current: I <sub>max</sub> =48A Material: Copper Insulation: Nylon Thickness: 1.0 mm	
SV 3.5-6L	1/4	6.5	12.0	12.1	28.5				
SV 5.5-3.5	#6	3.7	8.3	7.5	26.5				
SV 5.5-4S	#8	4.3	8.3	7.5	26.5				
SV 5.5-4L	#8	4.3	9.0	7.5	26.5				
SV 5.5-5	#10	5.3	9.0	7.5	26.5	13.0	● Red	Lead Section: 8-10 mm <sup>2</sup> (A.W.G. 8) Max Current: I <sub>max</sub> =62A Material: Copper Insulation: Nylon Thickness: 1.2 mm	
SV 5.5-6S	1/4	6.5	9.0	7.5	26.5				
SV 5.5-6L	1/4	6.5	12.0	12.0	32.5				
SV 5.5-8	5/16	8.5	14.0	11.5	31.5				
SV 8-4	#8	4.3	8.0	7.2	30.0		● Blue	Lead Section: 10-16 mm <sup>2</sup> (A.W.G. 6) Max Current: I <sub>max</sub> =88A Material: Copper Insulation: Nylon Thickness: 1.5 mm	
SV 8-5	#10	5.3	10.8	7.2	30.0	15.5			
SV 8-6	1/4	6.5	10.8	7.2	30.0				
SV 8-8	5/16	8.5	14.5	10.7	35.0				
SV 14-5	#10	5.3	11.0	10.7	35.2		● Yellow	Max Current: I <sub>max</sub> =115A	
SV 14-6	1/4	6.5	11.0	10.7	35.2	21.1			
SV 14-8	5/16	8.5	14.0	10.7	35.2				
SV 22-6	1/4	6.5	14.0	9.5	39.2				
SV 22-8	5/16	8.5	14.0	13.5	39.2	23.2	13.0		





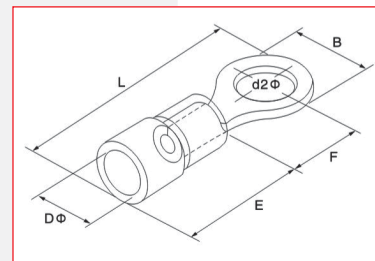
## Insulated Ring Terminal

Item No	USA Bolt No.	Bolt Dia. d2 (mm)	Dimension (mm)				E	D $\phi$	Color	Description			
			B	F	L								
RV 1.25-3	#4	3.2	5.7	4.95	17.8	10.0	4.3	● RED	Lead Section: 0.5-1.5 mm <sup>2</sup> (A.W.G. 22~16) Max Current: I <sub>max</sub> =19A Material: Copper Insulation: Nylon Thickness: 0.7 mm				
RV 1.25-3.5S	#6	3.7	5.7	4.95	17.8								
RV 1.25-3.5M	#6	3.7	6.6	6.3	19.6								
RV 1.25-3.5L	#6	3.7	8.0	7.0	21.0								
RV 1.25-4S	#8	4.3	6.6	6.3	19.6								
RV 1.25-4L	#8	4.3	8.0	7.0	21.0								
RV 1.25-5S	#10	5.3	8.0	7.0	21.0								
RV 1.25-5L	#10	5.3	9.5	8.5	22.2								
RV 1.25-5LL	#10	5.3	11.6	11.1	27.0								
RV 1.25-6S	1/4	6.5	9.5	8.5	22.2								
RV 1.25-6L	1/4	6.5	11.6	11.1	27.0								
RV 1.25-8	5/16	8.5	11.6	11.1	27.0								
RV 1.25-10	3/8	10.5	13.6	13.9	30.7								
RV 1.25-10L	3/8	10.5	19.2	16.0	35.6								
RV 1.25-12	1/2	13.0	19.2	16.0	35.6								
RV 1.25-14	9/16	15.0	27.0	21.0	44.5								
RV 1.25-16	5/8	17.0	27.0	21.0	44.5								
RV 1.25-20	3/4	21.0	27.0	21.0	44.5								
RV 2-3	#4	3.2	6.6	4.3	17.7					10.0	4.9	● BLUE	Lead Section: 1.5-2.5 mm <sup>2</sup> (A.W.G. 16~14) Max Current: I <sub>max</sub> =27A Material: Copper Insulation: Nylon Thickness: 0.8 mm
RV 2-3.5S	#6	3.7	6.6	4.3	17.7								
RV 2-3.5M	#6	3.7	6.6	6.3	19.7								
RV 2-3.5L	#6	3.7	8.5	7.4	21.7								
RV 2-4S	#8	4.3	6.6	6.3	19.7								
RV 2-4L	#8	4.3	8.5	7.4	21.7								
RV 2-5S	#10	5.3	8.5	7.4	21.7								
RV 2-5L	#10	5.3	9.5	7.4	22.2								
RV 2-6S	1/4	6.5	9.5	7.4	22.2								
RV 2-6L	1/4	6.5	12.0	11.0	27.0								
RV 2-8	5/16	8.5	12.0	11.0	27.0								
RV 2-10	3/8	10.5	13.6	13.9	30.7								
RV 2-10L	3/8	10.5	19.2	16.0	35.6								
RV 2-12	1/2	13.0	19.2	16.0	35.6								
RV 2-14	9/16	15.0	27.0	21.0	44.5								
RV 2-16	5/8	17.0	27.0	21.0	44.5								
RV 2-20	3/4	21.0	27.0	21.0	44.5								
RV 3.5-4	#8	4.3	8.0	8.0	25.0	13.0	6.3	● BLACK	Lead Section: 2.5-4 mm <sup>2</sup> (A.W.G. 14~12) Max Current: I <sub>max</sub> =37A Material: Copper Thickness: 1.0 mm				
RV 3.5-5S	#10	5.3	8.0	8.0	25.0								
RV 3.5-5L	#10	5.3	12.0	9.4	28.4								
RV 3.5-6	1/4	6.5	12.0	9.4	28.4								
RV 3.5-8	5/16	8.5	15.0	13.5	34.0								
RV 3.5-10	3/8	10.5	15.0	13.5	34.0								
RV 3.5-12	1/2	13.0	19.2	16.0	39.4								



## Insulated Ring Terminal

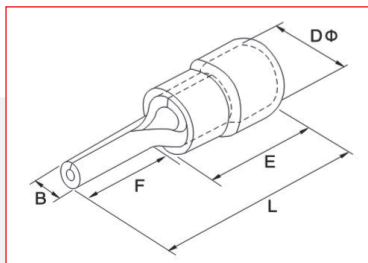
Item No	USA Bolt No.	Bolt Dia. d2 (mm)	Dimension (mm)				Dφ	Color	Description
			B	F	L	E			
RV 5.5-3.5	#6	3.7	7.2	6.1	22.7		6.7 YELLOW	Lead Section: 4~6 mm <sup>2</sup> (A.W.G. 12~10) Max Current: I <sub>max</sub> =48A Material: Copper Insulation: Nylon Thickness: 1.0 mm	
RV 5.5-4S	#8	4.3	7.2	6.1	22.7				
RV 5.5-4L	#8	4.3	9.5	8.3	26.0				
RV 5.5-5	#10	5.3	9.5	8.3	26.0				
RV 5.5-6	1/4	6.5	12.0	10.5	29.5				
RV 5.5-6M	1/4	6.5	12.0	13.0	32.0	13.0			
RV 5.5-8	5/16	8.5	15.0	13.7	35.0				
RV 5.5-10	3/8	10.5	15.0	13.7	35.0				
RV 5.5-12	1/2	13.0	19.2	16.0	39.4				
RV 5.5-14	9/16	15.0	32.0	25.2	54.2				
RV 5.5-16	5/8	17.0	32.0	25.2	54.2				
RV 5.5-20	3/4	21.0	32.0	25.2	54.2				
RV 8-4S	#8	4.3	8.8	10.5	30.8		8.5 RED	Lead Section: 6~10 mm <sup>2</sup> (A.W.G. 8) Max Current: I <sub>max</sub> =62A Material: Copper Insulation: Nylon Thickness: 1.2 mm	
RV 8-5S	#10	5.3	8.8	10.5	30.8				
RV 8-5M	#10	5.3	12.0	9.3	30.8				
RV 8-6S	1/4	6.5	12.0	9.3	30.8	15.5			
RV 8-8	5/16	8.5	15.0	13.8	36.8				
RV 8-10	3/8	10.5	15.0	13.8	36.8				
RV 8-12	1/2	13.0	20.0	15.0	40.5				
RV 14-4	#8	4.3	12.0	13.3	40.5		10.5 BLUE	Lead Section: 10~16 mm <sup>2</sup> (A.W.G. 6) Max Current: I <sub>max</sub> =88A Material: Copper Thickness: 1.5 mm	
RV 14-5	#10	5.3	12.0	13.3	40.5				
RV 14-6S	1/4	6.5	12.0	13.3	40.5				
RV 14-6L	1/4	6.5	16.0	14.2	42.8	21.2			
RV 14-8	5/16	8.5	16.0	14.2	42.8				
RV 14-10	3/8	10.5	16.0	14.2	42.8				
RV 14-12	1/2	13.0	22.0	19.8	51.7				
RV 22-5S	#10	5.3	12.2	14.5	42.4		13 YELLOW	Lead Section: 16~25 mm <sup>2</sup> Max Current: I <sub>max</sub> =115A Material: Copper Thickness: 1.7 mm	
RV 22-6S	1/4	6.5	12.2	14.5	4.24				
RV 22-8	5/16	8.5	16.5	13.5	44.7	23.2			
RV 22-10	3/8	10.5	16.5	13.5	44.7				
RV 22-12	1/2	13.0	22.0	19.7	53.7				
RV 38-5	#10	5.3	15.3	17.4	53.0		15.3 RED	Lead Section: 30~50 mm <sup>2</sup> (A.W.G. 2) Max Current: I <sub>max</sub> =160A Material: Copper Insulation: Nylon Thickness: 1.8 mm	
RV 38-6S	1/4	6.5	15.3	17.4	53.0				
RV 38-8S	5/16	8.5	15.3	17.4	53.0				
RV 38-8L	5/16	8.5	22.0	17.7	56.7	28			
RV 38-10S	3/8	10.5	15.3	17.4	53.0				
RV 38-10L	3/8	10.5	22.0	17.7	56.7				
RV 38-11	7/16	11.5	22.0	17.7	56.7				
RV 38-12	1/2	13.0	22.0	17.7	56.7				





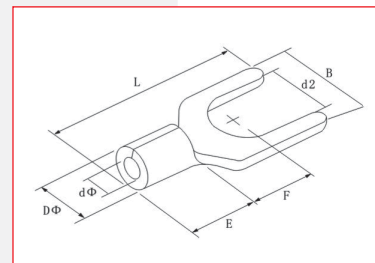
## Insulated Pin Terminal

Item No	Dimension (mm)					Color	Description
	B	F	L	E	D $\phi$		
PTV 1.25-9	1.9	9.0	19.0	10.0	4.3	RED	Lead Section: 0.5~1.5 mm <sup>2</sup> (A.W.G. 22~16) Max Current: I <sub>max</sub> =19A Material: Copper Insulation: Nylon Thickness: 0.7 mm
PTV 1.25-10	1.9	10.0	20.0				
PTV 1.25-12	1.9	12.0	22.0				
PTV 1.25-13	1.9	13.0	23.0				
PTV 1.25-18	1.9	18.0	28.0				
PTV 2-9	1.9	9.0	19.0	10.0	4.9	BLUE	Lead Section: 1.5~2.5 mm <sup>2</sup> (A.W.G. 16~14) Max Current: I <sub>max</sub> =19A Material: Copper Insulation: Nylon Thickness: 0.8 mm
PTV 2-10	1.9	10.0	20.0				
PTV 2-12	1.9	12.0	22.0				
PTV 2-13	1.9	13.0	23.0				
PTV 2-18	1.9	18.0	28.0				
PTV 3.5-10	2.8	10.0	23.8	13.0	6.3	BLACK	Lead Section: 2.5~4 mm <sup>2</sup> (A.W.G. 14~12) Max Current: I <sub>max</sub> =37A Material: Copper Thickness: 1.0 mm
PTV 3.5-13	2.8	13.0	26.8				
PTV 5.5-10	2.8	10.0	23.8	13.0	6.7	YELLOW	Lead Section: 4~6 mm <sup>2</sup> (A.W.G. 12~10) Max Current: I <sub>max</sub> =48A Material: Copper Thickness: 1.0 mm
PTV 5.5-13	2.8	13.0	26.8				
PTV 5.5-18	2.8	18.0	31.8				



**Non-insulated Fork Terminal**

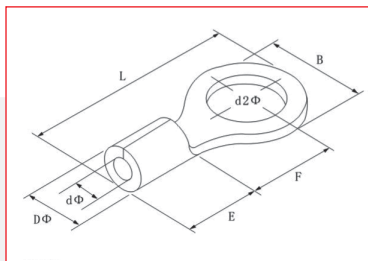
Item No	USA Bolt No.	Bolt Dia. d2 (mm)	Dimension (mm)					Dφ	dφ	Description
			B	F	L	E				
SNB 1.25-3	#4	3.2	5.7	6.5	16.0	4.8	3.4	1.7	Lead Section: 0.5~1.5 mm <sup>2</sup> (A.W.G. 22~16) Max Current: I <sub>max</sub> =19A Material: Copper Thickness: 0.7 mm	
SNB 1.25-3.5S	#6	3.7	5.7	6.5	16.0					
SNB 1.25-3.5L	#6	3.7	6.4	6.5	16.0					
SNB 1.25-4S	#8	4.3	6.4	6.5	16.0					
SNB 1.25-4M	#8	4.3	7.2	6.5	16.0					
SNB 1.25-4L	#8	4.3	8.1	6.5	16.0					
SNB 1.25-5S	#10	5.3	8.1	6.5	16.0					
SNB 1.25-5L	#10	5.3	9.5	6.5	16.0					
SNB 1.25-6S	1/4	6.5	9.5	6.5	16.0					
SNB 1.25-6L	1/4	6.5	12.0	11.0	22.0					
SNB 1.25-8	5/16	8.5	14.0	12.5	23.5					
SNB 2-3	#4	3.2	5.7	6.5	16.0	4.8	4.1	2.3	Lead Section: 1.5~2.5 mm <sup>2</sup> (A.W.G. 16~14) Max Current: I <sub>max</sub> =27A Material: Copper Thickness: 0.8 mm	
SNB 2-3.5S	#6	3.7	5.7	6.5	16.0					
SNB 2-3.5L	#6	3.7	6.4	6.5	16.0					
SNB 2-4S	#8	4.3	6.4	6.5	16.0					
SNB 2-4M	#8	4.3	7.2	6.5	16.0					
SNB 2-4L	#8	4.3	8.1	6.5	16.0					
SNB 2-5S	#10	5.3	8.1	6.5	16.0					
SNB 2-5L	#10	5.3	9.5	6.5	16.0					
SNB 2-6S	1/4	6.5	9.5	6.5	16.0					
SNB 2-6L	1/4	6.5	12.0	11.0	22.0					
SNB 2-8	5/16	8.5	14.0	12.5	23.5					
SNB 3.5-3.5	#6	3.7	8.0	7.0	18.3	6.0	5.0	3.0	Lead Section: 2.5~4 mm <sup>2</sup> (A.W.G. 14~12) Max Current: I <sub>max</sub> =37A Material: Copper Thickness: 1.0 mm	
SNB 3.5-4	#8	4.3	8.0	7.0	18.3					
SNB 3.5-5S	#10	5.3	8.0	7.0	18.3					
SNB 3.5-6S	1/4	6.5	9.0	7.5	19.5					
SNB 3.5-6	1/4	6.5	12.0	12.1	21.5					
SNB 5.5-3.5	#6	3.7	8.3	7.5	19.5	6.0	5.6	3.4	Lead Section: 4~6 mm <sup>2</sup> (A.W.G. 12~10) Max Current: I <sub>max</sub> =48A Material: Copper Thickness: 1.0 mm	
SNB 5.5-4S	#8	4.3	8.3	7.5	19.5					
SNB 5.5-4L	#8	4.3	9.0	7.5	19.5					
SNB 5.5-5	#10	5.3	9.0	7.5	19.5					
SNB 5.5-6S	1/4	6.5	9.0	7.5	19.5					
SNB 5.5-6L	1/4	6.5	12.0	12.0	25.5					
SNB 5.5-8	5/16	8.5	14.0	11.5	24.5					
SNB 8-4	#8	4.3	8.0	7.2	23.0	8.5	7.2	4.5	Lead Section: 8~10 mm <sup>2</sup> (A.W.G. 8) Max Current: I <sub>max</sub> =62A Material: Copper Thickness: 1.2 mm	
SNB 8-5S	#10	5.3	9.0	8.5	21.5					
SNB 8-5	#10	5.3	10.8	7.2	23.0					
SNB 8-6	1/4	6.5	10.8	7.2	23.0					
SNB 8-8	5/16	8.5	14.5	10.7	28.0	10.5	9.0	5.8	Max Current: I <sub>max</sub> =88A Thickness: 1.5 mm	
SNB 14-6	1/4	6.5	11.0	10.7	28.0					
SNB 14-8	5/16	8.5	14.0	10.7	28.0	12	11.5	7.7	Max Current: I <sub>max</sub> =115A Thickness: 1.7 mm	
SNB 22-6	1/4	6.5	14.0	9.5	34.5					
SNB 22-8	5/16	8.5	14.0	13.5	34.5					





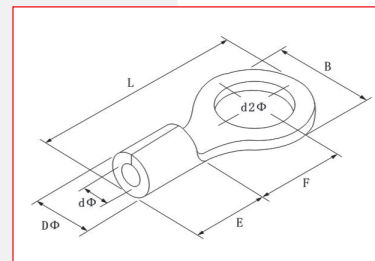
## Non-insulated Ring Terminal

Item No	USA Bolt No.	Bolt Dia. d2 (mm)	Dimension (mm)				E	Df	df	Description
			B	F	L					
RNB 1.25-3	#4	3.2	5.7	4.95	12.6	4.8	3.4	1.7	Lead Section: 0.5~1.5 mm <sup>2</sup> (A.W.G. 22~16) Max Current: I <sub>max</sub> =19A Material: Copper Thickness: 0.7 mm	
RNB 1.25-3.5S	#6	3.7	5.7	4.95	12.6					
RNB 1.25-3.5M	#6	3.7	6.6	6.3	14.4					
RNB 1.25-3.5L	#6	3.7	8.0	7.0	15.8					
RNB 1.25-4S	#8	4.3	6.6	6.3	14.4					
RNB 1.25-4L	#8	4.3	8.0	7.0	15.8					
RNB 1.25-5S	#10	5.3	8.0	7.0	15.8					
RNB 1.25-5L	#10	5.3	9.5	8.5	17.0					
RNB 1.25-5LL	#10	5.3	11.6	11.1	21.8					
RNB 1.25-6S	1/4	6.5	9.5	8.5	17.0					
RNB 1.25-6L	1/4	6.5	11.6	11.1	21.8					
RNB 1.25-8	5/16	8.5	11.6	11.1	21.8					
RNB 1.25-10	3/8	10.5	13.6	13.9	25.5					
RNB 1.25-10L	3/8	10.5	19.2	16.0	30.4					
RNB 1.25-12	1/2	13.0	19.2	16.0	30.4					
RNB 1.25-14	9/16	15.0	27.0	21.0	39.3					
RNB 1.25-16	5/8	17.0	27.0	21.0	39.3					
RNB 1.25-20	3/4	21.0	27.0	21.0	39.3					
RNB 2-3	#4	3.2	6.6	4.3	12.5	4.8	4.1	2.3	Lead Section: 1.5~2 mm <sup>2</sup> (A.W.G. 16~14) Max Current: I <sub>max</sub> =27A Material: Copper Thickness: 0.8 mm	
RNB 2-3.5S	#6	3.7	6.6	4.3	12.5					
RNB 2-3.5M	#6	3.7	6.6	6.3	14.5					
RNB 2-3.5L	#6	3.7	8.5	7.4	16.5					
RNB 2-4S	#8	4.3	6.6	6.3	14.5					
RNB 2-4L	#8	4.3	8.5	7.4	16.5					
RNB 2-5S	#10	5.3	8.5	7.4	16.5					
RNB 2-5L	#10	5.3	9.5	7.4	17.0					
RNB 2-6S	1/4	6.5	9.5	7.4	17.0					
RNB 2-6L	1/4	6.5	12.0	11.0	21.8					
RNB 2-8	5/16	8.5	12.0	11.0	21.8					
RNB 2-10	3/8	10.5	13.6	13.9	25.5					
RNB 2-10L	3/8	10.5	19.2	16.0	30.4					
RNB 2-12	1/2	13.0	19.2	16.0	30.4					
RNB 2-14	9/16	15.0	27.0	21.0	39.3					
RNB 2-16	5/8	17.0	27.0	21.0	39.3					
RNB 2-20	3/4	21.0	27.0	21.0	39.3					
RNB 3.5-4	#8	4.3	8.0	8.0	18.0	6.0	5.1	3.0	Lead Section: 2.5~4 mm <sup>2</sup> (A.W.G. 14~12) Max Current: I <sub>max</sub> =37A Material: Copper Thickness: 1.0 mm	
RNB 3.5-5S	#10	5.3	8.0	8.0	18.0					
RNB 3.5-5L	#10	5.3	12.0	9.4	21.4					
RNB 3.5-6	1/4	6.5	12.0	9.4	21.4					
RNB 3.5-8	5/16	8.5	15.0	13.5	27.0					
RNB 3.5-10	3/8	10.5	15.0	13.5	27.0					
RNB 3.5-12	1/2	13.0	19.2	16.0	32.4					



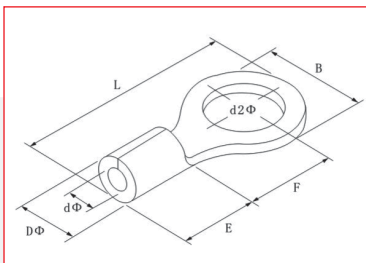
### Non-insulated Ring Terminal

Item No	USA Bolt No.	Bolt Dia. d2 (mm)	Dimension (mm)					E	Dφ	dφ	Description
			B	F	L						
RNB 5.5-3.5	#6	3.7	7.2	6.1	15.7					Lead Section: 4~6 mm <sup>2</sup> (A.W.G. 12~10) Max Current: I <sub>max</sub> =48A Material: Copper Thickness: 1.0 mm	
RNB 5.5-4S	#8	4.3	7.2	6.1	15.7						
RNB 5.5-4L	#8	4.3	9.5	8.3	19.0						
RNB 5.5-5	#10	5.3	9.5	8.3	19.0						
RNB 5.5-6	1/4	6.5	12.0	10.5	22.5						
RNB 5.5-6M	1/4	6.5	12.0	13.0	25.0	6.0	5.6	3.4			
RNB 5.5-8	5/16	8.5	15.0	13.7	28.0						
RNB 5.5-10	3/8	10.5	15.0	13.7	28.0						
RNB 5.5-12	1/2	13.0	19.2	16.0	32.4						
RNB 5.5-14	9/16	15.0	32.0	25.2	47.2						
RNB 5.5-16	5/8	17.0	32.0	25.2	47.2						
RNB 5.5-20	3/4	21.0	32.0	25.2	47.2						
RNB 8-4S	#8	4.3	8.8	10.5	23.8						Lead Section: 6~10 mm <sup>2</sup> (A.W.G. 8) Max Current: I <sub>max</sub> =62A Material: Copper Thickness: 1.2 mm
RNB 8-4L	#8	4.3	12.0	9.3	23.8						
RNB 8-5S	#10	5.3	8.8	10.5	23.8						
RNB 8-5M	#10	5.3	12.0	9.3	23.8						
RNB 8-5L	#10	5.3	15.0	13.8	29.8	8.5	7.2	4.5			
RNB 8-6S	1/4	6.5	12.0	9.3	23.8						
RNB 8-6L	1/4	6.5	15.0	13.8	29.8						
RNB 8-8	5/16	8.5	15.0	13.8	29.8						
RNB 8-10	3/8	10.5	15.0	13.8	29.8						
RNB 8-12	1/2	13.0	20.0	15.0	33.5						
RNB 14-4	#8	4.3	12.0	13.3	29.8					Lead Section: 10~16 mm <sup>2</sup> (A.W.G. 6) Max Current: I <sub>max</sub> =88A Material: Copper Thickness: 1.5 mm	
RNB 14-5	#10	5.3	12.0	13.3	29.8						
RNB 14-5L	#10	5.3	16.0	14.5	32.5						
RNB 14-6S	1/4	6.5	12.0	13.3	29.8	10.5	9.0	5.8			
RNB 14-6L	1/4	6.5	16.0	14.2	32.5						
RNB 14-8	5/16	8.5	16.0	14.2	32.5						
RNB 14-10	3/8	10.5	16.0	14.2	32.5						
RNB 14-12	1/2	13.0	22.0	19.8	41.0						
RNB 22-5S	#10	5.3	12.2	14.5	33.2					Lead Section: 16~25 mm <sup>2</sup> (A.W.G. 4) Max Current: I <sub>max</sub> =115A Material: Copper Thickness: 1.7 mm	
RNB 22-5L	#10	5.3	16.5	13.5	33.5						
RNB 22-6S	1/4	6.5	12.2	14.5	33.2						
RNB 22-6L	1/4	6.5	16.5	13.5	33.5	12.0	11.5	7.7			
RNB 22-8	5/16	8.5	16.5	13.5	33.5						
RNB 22-10	3/8	10.5	16.5	13.5	33.5						
RNB 22-12	1/2	13.0	22.0	19.7	42.5						
RNB 38-5	#10	5.3	15.3	17.4	39.0					Lead Section: 35~50 mm <sup>2</sup> (A.W.G. 2) Max Current: I <sub>max</sub> =160A Material: Copper Thickness: 1.8 mm	
RNB 38-6S	1/4	6.5	15.3	17.4	39.0						
RNB 38-6L	1/4	6.5	22.0	17.7	42.7						
RNB 38-8S	5/16	8.5	15.3	17.4	39.0						
RNB 38-8L	5/16	8.5	22.0	17.7	42.7	14.0	13.3	9.4			
RNB 38-10S	3/8	10.5	15.3	17.4	39.0						
RNB 38-10L	3/8	10.5	22.0	17.7	42.7						
RNB 38-11	7/16	11.5	22.0	17.4	42.7						
RNB 38-12	1/2	13.0	22.0	17.7	42.7						





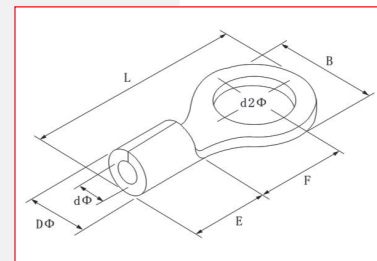
## Non-insulated Ring Terminal

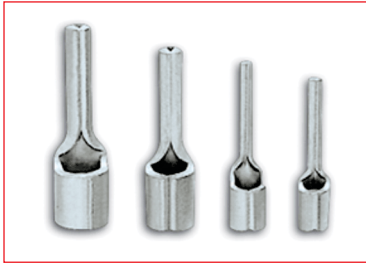


Item No	USA Bolt No.	Screw Dia. d2 (mm)	Dimension (mm)						Description						
			B	F	L	E	D $\Phi$	d $\Phi$							
RNB 60-6	1/4	6.5	22.0	20.7	49.7	18.0	15.4	11.4	Lead Section: 50~70 mm <sup>2</sup> (A.W.G. 1/0) Max Current: I <sub>max</sub> =215A Material: Copper Thickness: 1.8 mm						
RNB 60-8	5/16	8.5													
RNB 60-10	3/8	10.5													
RNB 60-11	7/16	11.5	32.0	23.5	57.5	18.0	15.4	11.4							
RNB 60-12	1/2	3.0													
RNB 60-14	9/16	15.0													
RNB 60-16	5/8	17.0	32.0	26.0	61.0	18.0	17.5	13.3		Lead Section: 70~95 mm <sup>2</sup> (A.W.G. 1/0) Max Current: I <sub>max</sub> =235A Material: Copper Thickness: 2.0 mm					
RNB 60-18	11/16	19.0													
RNB 60-20	3/4	21.0													
RNB 60-22	7/4	23.0													
RNB 70-6	1/4	6.5							27.0		20.7	54.2	20.0	19.5	14.5
RNB 70-8	5/16	8.5													
RNB 70-10	3/8	10.5													
RNB 70-11	7/16	11.5	32.0	32.0	68.0	20.0	19.5	14.5	Lead Section: 95~120 mm <sup>2</sup> (A.W.G. 3/0) Max Current: I <sub>max</sub> =255A Material: Copper Thickness: 2.3 mm						
RNB 70-12	1/2	13.0													
RNB 70-14	9/16	15.0													
RNB 70-16	5/8	17.0													
RNB 70-18	11/16	19.0													
RNB 70-20	3/4	21.0													
RNB 70-22	7/8	23.0	28.5	20.4	55.6	21.0	22.1	16.4							
RNB 80-6	1/4	6.5													
RNB 80-8	5/16	8.5													
RNB 80-10	3/8	10.5													
RNB 80-11	7/16	11.5													
RNB 80-12	1/2	13.0													
RNB 80-14	9/16	15.0	32.0	32.0	69.0	21.0	22.1	16.4	Lead Section: 120~150 mm <sup>2</sup> (A.W.G. 4/0) Max Current: I <sub>max</sub> =300A Material: Copper Thickness: 2.7 mm						
RNB 80-16	5/8	17.0													
RNB 80-18	11/16	19.0													
RNB 80-20	3/4	21.0													
RNB 80-22	7/8	23.0													
RNB 100-6	1/4	6.5													
RNB 100-8	5/16	8.5													
RNB 100-10	3/8	10.5													
RNB 100-11	7/16	11.5													
RNB 100-12	1/2	13.0													
RNB 100-14	9/16	15.0													
RNB 100-16	5/8	17.0													
RNB 100-18	11/16	19.0													
RNB 100-20	3/4	21.0													
RNB 100-22	7/8	23.0													

**Non-insulated Ring Terminal**

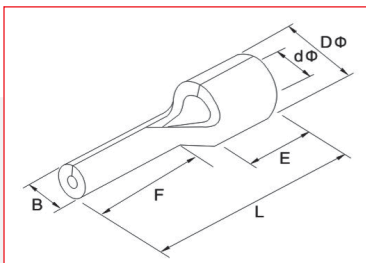
Item No	USA Bolt No.	Bolt Dia. d2 (mm)	Dimension (mm)						Description
			B	F	L	E	Dφ	dφ	
RNB 150-8	5/16	8.5	36.0	23.0	66.0	27.0	26.6	19.5	Lead Section: 150~185 mm <sup>2</sup> (A.W.G. 1/0) Max Current: I <sub>max</sub> =395A Material: Copper Thickness: 3.2 mm
RNB 150-10	3/8	10.5							
RNB 150-11	7/16	11.5							
RNB 150-12	1/2	13.0							
RNB 150-14	9/16	15.0							
RNB 150-16	5/8	17.0							
RNB 150-18	11/16	19.0	36.0	36.0	81.0				
RNB 150-20	3/4	21.0							
RNB 150-22	7/8	23.0							
RNB 150-24	15/16	25.0							
RNB 150-27	1	28.0							
RNB 180-8	5/16	8.5							
RNB 180-10	3/8	10.5	38.5	24.5	69.0	28.5	28.6	21.0	Lead Section: 185~240 mm <sup>2</sup> (A.W.G. 300~350) Max Current: I <sub>max</sub> =440A Material: Copper Thickness: 3.5 mm
RNB 180-11	7/16	11.5							
RNB 180-12	1/2	13.0							
RNB 180-14	9/16	15.0							
RNB 180-16	5/8	17.0							
RNB 180-18	11/16	19.0							
RNB 180-20	3/4	21.0	38.5	39.0	86.6				
RNB 180-22	7/8	23.0							
RNB 180-24	15/16	25.0							
RNB 180-27	1	28.0							
RNB 200-8	5/16	8.5							
RNB 200-10	3/8	10.5							
RNB 200-11	7/16	11.5							
RNB 200-12	1/2	13.0							
RNB 200-14	9/16	15.0							
RNB 200-16	5/8	17.0							
RNB 200-18	11/16	19.0							
RNB 200-20	3/4	21.0	44.0	37.5	91.0				
RNB 200-22	7/8	23.0							
RNB 200-24	15/16	25.0							
RNB 200-27	1	28.0							
RNB 325-8	5/16	8.5							
RNB 325-10	3/8	10.5							50.5
RNB 325-11	7/16	11.5							
RNB 325-12	1/2	13.0							
RNB 325-14	9/16	15.0							
RNB 325-16	5/8	17.0							
RNB 325-18	11/16	19.0							
RNB 325-20	3/4	21.0	50.5	45.0	105.7				
RNB 325-22	7/8	23.0							
RNB 325-24	15/16	25.0							
RNB 325-27	1	28.0							





### Non-Insulated Pin Terminal

Item No	Dimension (mm)				D $\phi$	d $\phi$	Description
	B	F	L	E			
PTN 1.25-9	1.9	9.0	13.8	4.8	3.4	1.7	Lead Section: 0.5~1.5 mm <sup>2</sup> (A.W.G. 22~16) Max Current: I <sub>max</sub> =19A Material: Copper Thickness: 0.7 mm
PTN 1.25-10	1.9	10.0	14.8				
PTN 1.25-12	1.9	12.0	16.8				
PTN 1.25-13	1.9	13.0	17.8				
PTN 1.25-18	1.9	18.0	22.8				
PTN 2-9	1.9	9.0	13.8	4.8	4.1	2.3	Lead Section: 1.5~2.5 mm <sup>2</sup> (A.W.G. 16~14) Max Current: I <sub>max</sub> =19A Material: Copper Thickness: 0.7 mm
PTN 2-10	1.9	10.0	14.8				
PTN 2-12	1.9	12.0	16.8				
PTN 2-13	1.9	13.0	17.8				
PTN 2-18	1.9	18.0	22.8				
PTN 3.5-10	2.8	10.0	16.8	6.0	5.0	3.0	Lead Section: 2.5~4 mm <sup>2</sup> (A.W.G. 14~12) Max Current: I <sub>max</sub> =37A Material: Copper Thickness: 1.0 mm
PTN 3.5-13	2.8	13.0	19.8				
PTN 5.5-10	2.8	10.0	16.8	6.0	5.6	3.4	Lead Section: 4~6 mm <sup>2</sup> (A.W.G. 12~10) Max Current: I <sub>max</sub> =48A Material: Copper Thickness: 1.0 mm
PTN 5.5-13	2.8	13.0	19.8				
PTN 5.5-18	2.8	18.0	24.8				

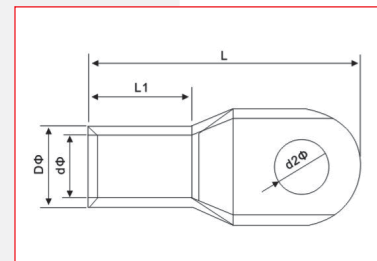


### Cable Lugs

Item No	d2φ	Dimension (mm)				CLBLE SQ	Description
		Dφ	dφ	L1	L		
SC 1.5-5	5.2	1.8	3.7	5	16	1.5	
SC 2.5-4	4.2	2.4	4.0	7	20	2.5	
SC 2.5-5	5.2						
SC 4-5	5.2	3.1	4.8	7	20	4	
SC 4-6	6.5						
SC 6-5	5.2	3.8	5.5	9	24	6	
SC 6-6	6.5						
SC 10-6	6.5	5	6.5	9	26	10	
SC 10-8	8.4						
SC 16-6	6.5	5.7	7.5	11	30	16	
SC 16-8	8.4						
SC 25-6	6.5	7.2	9	13	35	25	
SC 25-8	8.4						
SC 35-8	8.4	8.5	10.8	13.5	38	35	
SC 35-10	10.5						
SC 50-8	8.4	9.5	12.5	16	44	50	
SC 50-10	10.5						
SC 70-10	10.5	11.5	14.5	18	51	70	
SC 70-12	13.0						
SC 95-10	10.5	13.7	17	22	57	95	
SC 95-12	13						
SC 120-12	13	15	19	24	61	120	
SC 120-16	17						
SC 150-12	13	16.7	21	26	71	150	
SC 150-16	17	18.5	23	30	79	185	
SC 185-16	17	21	26	38	93	240	
SC 240-16	17						
SC 240-20	21	24.5	30	42	103	300	
SC 300-16	17						
SC 300-20	21	27	34	42	113	400	
SC 400-16	17						
SC 400-20	21	30	38	48	123	500	
SC 500-16	17						
SC 500-20	21						



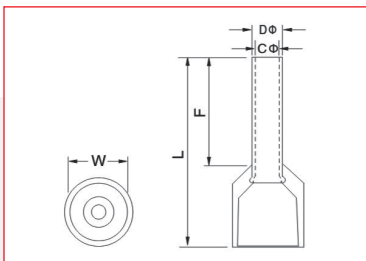
Cable Lug  
(DTGA) Type  
Material:  
T2 Copper Tube



**Cord End Terminals**

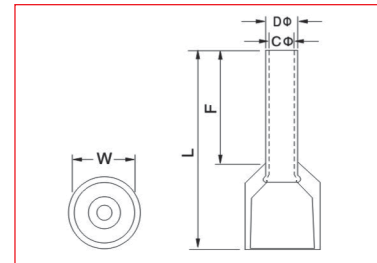


Item No	Dimension (mm)					A.W.G	Lead Selection mm <sup>2</sup>	Color	Description
	F	L	W	D $\phi$	C $\phi$				
E 0206	6.0	10.5	2.5	1.0	0.7	#26	0.25	Light Blue	Material: Copper Insulating Material: Nylon
E 0208	8.0	12.5							
E 0306	6.0	10.5	2.5	1.1	0.8	#24	0.34	Light Green	
E 0308	8.0	12.5							
E 0506	6.0	12.0	2.6	1.3	1.0	#22	0.5	Orange	
E 0508	8.0	14.0							
E 0510	10.0	16.0							
E 0512	12.0	18.0							
E 7506	6.0	12.4	2.8	1.6	1.3	#20	0.75	White	
E 7508	8.0	14.6							
E 7510	10.0	16.4							
E 7512	12.0	18.4							
E 1006	6.0	12.4	3.0	1.8	1.5	#16	1.5	Red	
E 1008	8.0	14.6							
E 1010	10.0	16.4							
E 1012	12.0	18.4							
E 1508	6.0	14.6	3.5	2.1	1.8	#16	1.5	Red	
E 1510	8.0	16.4							
E 1512	10.0	18.4							
E 1518	12.0	24.4							
E 2508	8.0	15.2	4.0	2.6	2.3	#14	2.5	Blue	
E 2510	10.0	17.2							
E 2512	12.0	19.2							
E 2518	18.0	25.2							
E 4009	9.0	16.5	4.4	3.2	2.8	#12	4.0	Gray	
E 4012	12.0	19.5							
E 4018	18.0	25.5							
E 6010	10.0	18.0	6.3	3.9	3.5	#10	6.0	Black	
E 6012	12.0	20.0							
E 6018	18.0	26.0							
E 10-12	12.0	21.5	7.6	4.9	4.5	#7	10.0	Iroy	
E 10-18	18.0	27.5							
E 16-12	12.0	22.2	8.8	6.2	5.8	#5	16.0	Green	
E 16-18	18.0	28.2							



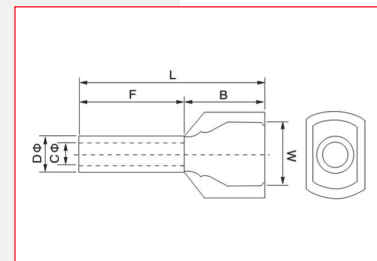
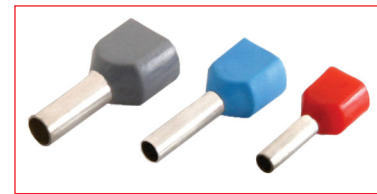
### Cord End Terminal

Item No	Dimension (mm)						Lead Selection mm <sup>2</sup>	Color	Description
	F	L	W	D $\phi$	C $\phi$	A.W.G			
E 25-16	16.0	29.0	11.2	7.9	7.5	#4	25.0	● Brown	Material: Copper Insulating Material: Nylon
E 25-22	22.0	35.0						● Black	
E 35-16	16.0	30.0	12.7	8.7	8.3	#2	35.0	● Gray	
E 35-25	25.0	39.0							
E 50-20	20.0	36.0	15.3	10.9	10.3	#1	50.0	● Oliver	
E 50-25	25.0	41.0							
E 70-20	20.0	37.0	16.0	14.3	13.5	2/0	70	● Yellow	
E 70-25	25.0	42.0							
E 70-27	27.0	44.0							
E 95-25	25.0	44.0	18.5	15.3	14.5	3/0	95	● Red	
E 120-27	27.0	47.6	20.3	17.5	16.5	4/4	120	● Blue	
E 120-32	32.0	52.6							
E 150-25	25.0	50.6	23.4	20.6	19.6	250/ 300	150	● Yellow	
E 150-27	27.0	52.6							
E 150-32	32.0	57.6							



### Twin Cord End Terminal

Item No	Lead Section mm <sup>2</sup>	Dimension (mm)						Color	Description
		F	L	W	B	D $\phi$	C $\phi$		
TE 0508	2 X 0.5	8.0	14.5	5.0	6.5	1.8	1.5	○ White	Material: Copper Insulating Material: Nylon
TE 7508	2 X 0.75	8.0	14.7	5.5	6.7	2.1	1.8	● Blue	
TE 7510	2 X 0.75	10.0	16.7	5.5	6.7	2.1	1.8	● Gray	
TE 1008	2 X 1.0	8.0	15.1	5.5	7.1	2.3	2.0	● Red	
TE 1010	2 X 1.0	10.0	17.1	5.5	7.1	2.3	2.0		
TE 1508	2 X 1.5	8.0	15.5	6.4	7.2	2.6	2.3	● Black	
TE 1512	2 X 1.5	12.0	19.5	6.4	7.5	2.6	2.3	● Yellow	
TE 2510	2 X 2.5	10.0	18.5	8.0	8.5	3.3	2.9	● Gray	
TE 2513	2 X 2.5	13.0	21.5	8.0	8.5	3.3	2.9	● Blue	
TE 4012	2 X 4.0	12.0	23.1	8.8	11.1	4.2	3.8	● Orange	
TE 6014	2 X 6.0	14.0	26.1	9.5	12.1	5.3	4.9	● Green	
TE 10-14	2 X 10.0	14.0	26.2	12.6	12.0	6.9	6.5	● Brown	
TE 16-14	2 X 16.0	14.0	31.3	19.0	17.3	8.7	8.3	○ Irony	



# **SUPAFLEX**

**SUPAFLEX PVT. LTD.**

Plot No – 6, First/Second Floor, Industrial Area, Tilak Nagar - 110018

**Telephone :** +91-11-68888708 | **Mobile :** +91-9599992308 | 9599992306-10

**Email Id :** sales@supaflex.co.in | sales1@supaflex.co.in | [www.supaflex.co.in](http://www.supaflex.co.in)

