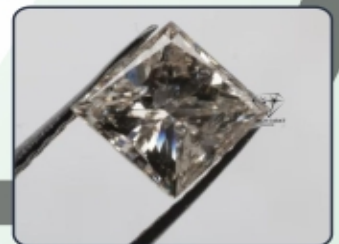
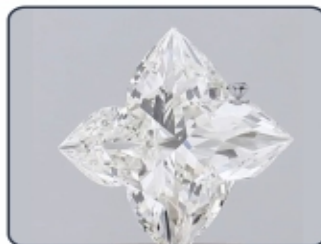
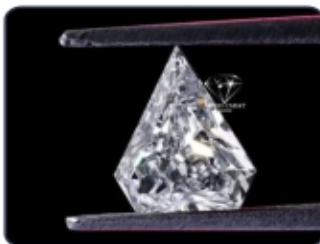
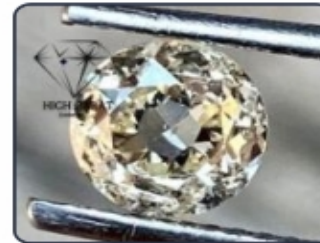
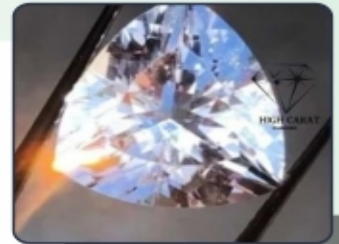
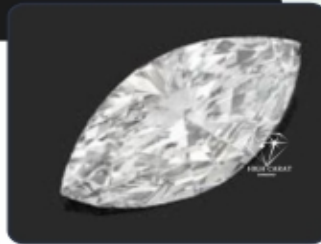




HIGH CARAT DIAMOND



If there is one jewellery piece that speaks of forever, then it is the Diamond. It is the sole reason diamonds are a popular engagement ring choice. A rare diamond adds to the value of the investment. These are also the best gifting options for special occasions like weddings, anniversaries, birthdays, etc. This versatile jewellery is available in varying forms studs, long earrings, etc for celebrating special occasions. High Carat Diamond is a coveted manufacturer and trader of a comprehensive range of Diamond jewellery in Surat. As an upcoming and thriving enterprise, we are recognized as a leading exporter of GIA and IGI-certified diamonds globally. Our customers speak highly about our product quality and exceptional customer service.

At **High Carat Diamond**, we believe in crafting timeless pieces that speak of eternal love and enduring beauty. As a premier manufacturer, exporter and supplier of diamonds based in Surat, we take pride in offering a comprehensive range of exquisite pieces that captivate hearts and inspire awe.

Our journey began with a vision to redefine the standards of diamond craftsmanship and customer service. Today, we stand as a beacon of excellence in the industry, renowned for our commitment to quality, integrity, and innovation.

What sets us apart is our unwavering dedication to perfection at every stage of production. From sourcing the finest diamonds to employing cutting-edge technology in our manufacturing process, we ensure that each piece meets the highest standards of excellence.

Our extensive product range caters to every taste and occasion, from classic engagement rings to statement earrings. Whether it's a wedding, anniversary, or birthday celebration, our diamonds add a touch of elegance and sophistication to every special moment.

We take pride in being a leading exporter of GIA and IGI-certified diamonds, trusted by customers worldwide for our exceptional quality and craftsmanship. Our lab-grown diamonds offer a cost-effective alternative without compromising on brilliance or authenticity, accompanied by a certificate of assurance.

At **High Carat Diamond**, we understand that every diamond tells a unique story. That's why we offer a diverse selection of shapes, cuts, and carat options to suit every preference and budget. Each diamond is meticulously crafted to reflect the unparalleled beauty and brilliance that defines our brand.



Our Products



0.25ct to 1.5ct Butterfly Cut Lab Grown Diamond



Asscher Cut Lab Grown Diamond



Asscher Cut Lab Grown Diamonds



Butterfly Cut Lab Grown Diamond



Heart Cut Lab Grown Diamond



Heart Cut Lab Grown Diamonds



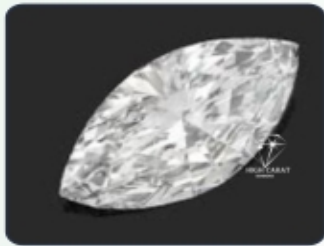
Heart Cut Shaped Loose Lab Grown Diamond



Lab Grown Diamond



Marquise Cut Lab Grown Diamond



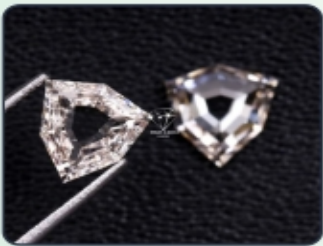
Marquise Cut Lab Grown Diamonds



Oval Shape Loose Lab Grown Diamond



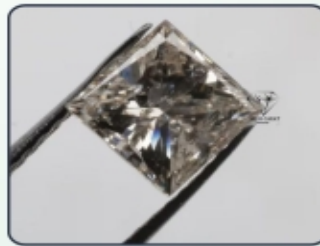
Princess Cut Lab Grown Diamond



Shield Cut Lab Grown Diamond



Shield Cut Loose Lab Grown Diamond



Princess Cut CVD Diamond



Tortoise Cut Lab Grown Diamonds



Trillion Cut Lab Grown Diamond

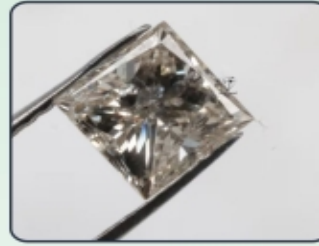


Princess Cut Diamond

Our Products



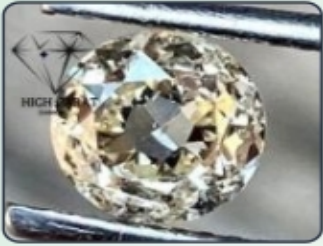
Princess Cut
Fancy Diamond



Princess Shaped
Diamonds



High Carat Natural
Old Mine Cut Diamonds



Natural Old Mine
Cut Diamond



Natural Old Mine
Diamonds



0.25ct to 1.5ct Heart
Cut Diamond



1.5ct to 2.5ct Half
Moon Diamond



**INTERNATIONAL
GEMOLOGICAL
INSTITUTE**



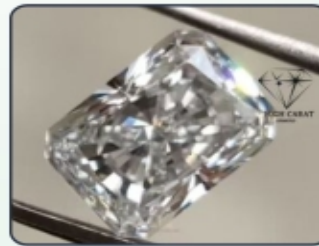
Heart Cut Loose
Diamond



Heart Shape
Diamonds



Heart Shaped
Loose Diamond



Radiant Big Diamond



Radiant Cut
Diamond



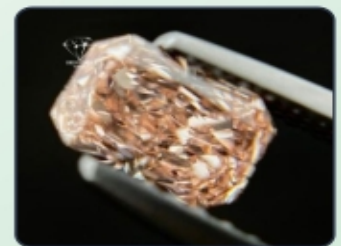
Radiant Cut Diamonds



Radiant Loose Diamond



Emerald Cut Diamond

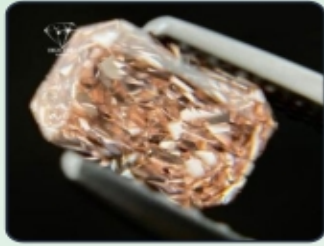


0.25ct to 1.5ct
Emerald Cut Diamond

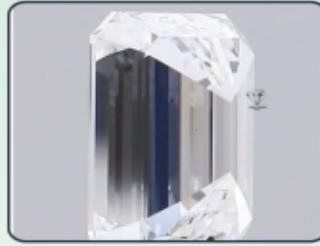
Our Products



1.5ct to 2.5ct Pear
Cut Diamond



Emerald Fancy
Pink Diamond



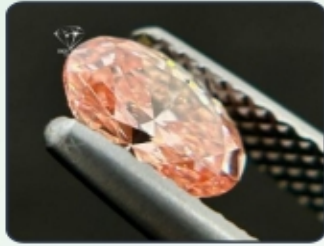
Emerald Lab
Grown Diamond



0.25ct to 1.5ct Pear
Shaped Diamond



Pear Shaped Diamond



Oval Cut Fancy Diamond



Pear Diamond



Pear Fancy
Cut Pink Diamond



Trillion Cut Diamond



Pear Shaped
Big Diamond



Round Diamond
with Certificate



Round Loose Diamonds



Horse Cut Diamond



Trillion Shape Diamond



Marquise Shaped
Diamonds



Fancy Vivid Marquise
Diamond



Tortoise Cut Diamond



Asscher Shaped
Diamond

Our Products



Triangle Cut Diamond



Oval Cut Diamond



Marquise Cut Diamond



Pear Cut Diamond



CVD Diamond



Fancy Vivid Blue
Color Diamond



0.25ct to 1.5ct Flower
Cut Diamond



0.25ct to 1.5ct
Fancy Diamond



Shield Shaped
CVD Diamond



High Carat Shield
Cut Diamond



Butterfly Cut
Diamonds



Flower Cut Loose
Diamond



Square Cut Diamond



Pear Cut Loose
Diamonds



Emerald Cut Loose
Diamond



Tortoise Cut Lab
Grown Diamond



Princess Fancy Cut
Loose Diamond



Half Moon
Loose Diamond



0.25ct to 1.5ct Half
Moon Diamonds



High Carat Heart
Shaped Diamond

Our Certificate

GIA FACSIMILE
This is a duplicate of the original GIA Report. The representative right to be a duplicate of the original GIA Report is hereby acknowledged. The original GIA Report is available for review at the GIA Laboratory in Geneva, Switzerland.

GIA REPORT 7486356235
Verify this report at gia.com

GIA NATIONAL GRADING SYSTEM
January 14, 2024
GIA Report Number: 7486356235
Shape and Cutting Style: Round Brilliant
Measurements: 5.11 - 5.13 x 3.22 mm

GRADING RESULTS
Carat Weight: 0.52 carat
Color Grade: F
Clarity Grade: VS2
Cut Grade: Excellent

ADDITIONAL GRADING INFORMATION
Polish: Excellent
Symmetry: Excellent
Fluorescence: Medium-Blue
Clarity Characteristics: Pigeon, Needle
Inscription(s): GIA 7486356235

PROPORTIONS
Table: 60.1%
Depth: 61.3%
Girdle: 0.40-0.45
Crown: 34.3%
Pavilion: 40.7%
Profile to actual proportions

RELATIVE SCALES
Table: 100%
Depth: 100%
Girdle: 100%
Crown: 100%
Pavilion: 100%
Profile to actual proportions

LABORATORY GROWN DIAMOND IDENTIFICATION REPORT
April 23, 2024
GIA Report Number: 1493119228
Description: LABORATORY GROWN DIAMOND
Shape and Cutting Style: Round Brilliant
Measurements: 5.16 - 5.19 x 3.08 mm

GRADING RESULTS
Carat Weight: 0.50 carat
Color Grade: F
Clarity Grade: VS2
Cut Grade: Excellent

ADDITIONAL GRADING INFORMATION
Polish: Excellent
Symmetry: Excellent
Fluorescence: Medium-Blue
Clarity Characteristics: Pigeon, Feather
Inscription(s): GIA 2498212194

PROPORTIONS
Table: 60.1%
Depth: 61.3%
Girdle: 0.40-0.45
Crown: 34.3%
Pavilion: 40.7%
Profile to actual proportions

RELATIVE SCALES
Table: 100%
Depth: 100%
Girdle: 100%
Crown: 100%
Pavilion: 100%
Profile to actual proportions

GIA FACSIMILE
This is a duplicate of the original GIA Report. The representative right to be a duplicate of the original GIA Report is hereby acknowledged. The original GIA Report is available for review at the GIA Laboratory in Geneva, Switzerland.

GIA REPORT 2498212194
Verify this report at gia.com

GIA NATIONAL GRADING SYSTEM
April 23, 2024
GIA Report Number: 2498212194
Shape and Cutting Style: Round Brilliant
Measurements: 5.16 - 5.19 x 3.08 mm

GRADING RESULTS
Carat Weight: 0.50 carat
Color Grade: F
Clarity Grade: VS2
Cut Grade: Excellent

ADDITIONAL GRADING INFORMATION
Polish: Excellent
Symmetry: Excellent
Fluorescence: Medium-Blue
Clarity Characteristics: Pigeon, Feather
Inscription(s): GIA 2498212194

PROPORTIONS
Table: 60.1%
Depth: 61.3%
Girdle: 0.40-0.45
Crown: 34.3%
Pavilion: 40.7%
Profile to actual proportions

RELATIVE SCALES
Table: 100%
Depth: 100%
Girdle: 100%
Crown: 100%
Pavilion: 100%
Profile to actual proportions

INTERNATIONAL GEMOLOGICAL INSTITUTE
LABORATORY GROWN DIAMOND REPORT

LABORATORY GROWN DIAMOND IDENTIFICATION REPORT
April 23, 2024
GIA Report Number: 1493119228
Description: LABORATORY GROWN DIAMOND
Shape and Cutting Style: Round Brilliant
Measurements: 5.16 - 5.19 x 3.08 mm

GRADING RESULTS
Carat Weight: 0.50 carat
Color Grade: F
Clarity Grade: VS2
Cut Grade: Excellent

ADDITIONAL GRADING INFORMATION
Polish: Excellent
Symmetry: Excellent
Fluorescence: Medium-Blue
Clarity Characteristics: Pigeon, Feather
Inscription(s): GIA 2498212194

PROPORTIONS
Table: 60.1%
Depth: 61.3%
Girdle: 0.40-0.45
Crown: 34.3%
Pavilion: 40.7%
Profile to actual proportions

RELATIVE SCALES
Table: 100%
Depth: 100%
Girdle: 100%
Crown: 100%
Pavilion: 100%
Profile to actual proportions

INTERNATIONAL GEMOLOGICAL INSTITUTE
LABORATORY GROWN DIAMOND REPORT

LABORATORY GROWN DIAMOND IDENTIFICATION REPORT
April 23, 2024
GIA Report Number: 1493119228
Description: LABORATORY GROWN DIAMOND
Shape and Cutting Style: Round Brilliant
Measurements: 5.16 - 5.19 x 3.08 mm

GRADING RESULTS
Carat Weight: 0.50 carat
Color Grade: F
Clarity Grade: VS2
Cut Grade: Excellent

ADDITIONAL GRADING INFORMATION
Polish: Excellent
Symmetry: Excellent
Fluorescence: Medium-Blue
Clarity Characteristics: Pigeon, Feather
Inscription(s): GIA 2498212194

PROPORTIONS
Table: 60.1%
Depth: 61.3%
Girdle: 0.40-0.45
Crown: 34.3%
Pavilion: 40.7%
Profile to actual proportions

RELATIVE SCALES
Table: 100%
Depth: 100%
Girdle: 100%
Crown: 100%
Pavilion: 100%
Profile to actual proportions

GIA FACSIMILE
This is a duplicate of the original GIA Report. The representative right to be a duplicate of the original GIA Report is hereby acknowledged. The original GIA Report is available for review at the GIA Laboratory in Geneva, Switzerland.

GIA REPORT 2497038488
Verify this report at gia.com

GIA NATIONAL GRADING SYSTEM
April 09, 2024
GIA Report Number: 2497038488
Shape and Cutting Style: Round Brilliant
Measurements: 5.69 - 5.75 x 3.19 mm

GRADING RESULTS
Carat Weight: 0.52 carat
Color Grade: E
Clarity Grade: VS2
Cut Grade: Excellent

ADDITIONAL GRADING INFORMATION
Polish: Excellent
Symmetry: Excellent
Fluorescence: Medium-Blue
Clarity Characteristics: Cloud, Needle, Pigeon, Inverted Natural
Inscription(s): GIA 2497038488

PROPORTIONS
Table: 60.1%
Depth: 61.3%
Girdle: 0.40-0.45
Crown: 34.3%
Pavilion: 40.7%
Profile to actual proportions

RELATIVE SCALES
Table: 100%
Depth: 100%
Girdle: 100%
Crown: 100%
Pavilion: 100%
Profile to actual proportions

GIA FACSIMILE
This is a duplicate of the original GIA Report. The representative right to be a duplicate of the original GIA Report is hereby acknowledged. The original GIA Report is available for review at the GIA Laboratory in Geneva, Switzerland.

GIA REPORT 1493119228
Verify this report at gia.com

GIA NATIONAL GRADING SYSTEM
April 16, 2024
GIA Report Number: 1493119228
Shape and Cutting Style: Round Brilliant
Measurements: 5.10 - 5.13 x 3.10 mm

GRADING RESULTS
Carat Weight: 0.50 carat
Color Grade: E
Clarity Grade: VS2
Cut Grade: Excellent

ADDITIONAL GRADING INFORMATION
Polish: Excellent
Symmetry: Excellent
Fluorescence: Medium-Blue
Clarity Characteristics: Oval, Pigeon, Feather
Inscription(s): GIA 1493119228

PROPORTIONS
Table: 60.1%
Depth: 61.3%
Girdle: 0.40-0.45
Crown: 34.3%
Pavilion: 40.7%
Profile to actual proportions

RELATIVE SCALES
Table: 100%
Depth: 100%
Girdle: 100%
Crown: 100%
Pavilion: 100%
Profile to actual proportions

INTERNATIONAL GEMOLOGICAL INSTITUTE
LABORATORY GROWN DIAMOND REPORT

LABORATORY GROWN DIAMOND IDENTIFICATION REPORT
April 23, 2024
GIA Report Number: 1493119228
Description: LABORATORY GROWN DIAMOND
Shape and Cutting Style: Round Brilliant
Measurements: 5.16 - 5.19 x 3.08 mm

GRADING RESULTS
Carat Weight: 0.50 carat
Color Grade: F
Clarity Grade: VS2
Cut Grade: Excellent

ADDITIONAL GRADING INFORMATION
Polish: Excellent
Symmetry: Excellent
Fluorescence: Medium-Blue
Clarity Characteristics: Pigeon, Feather
Inscription(s): GIA 2498212194

PROPORTIONS
Table: 60.1%
Depth: 61.3%
Girdle: 0.40-0.45
Crown: 34.3%
Pavilion: 40.7%
Profile to actual proportions

RELATIVE SCALES
Table: 100%
Depth: 100%
Girdle: 100%
Crown: 100%
Pavilion: 100%
Profile to actual proportions

INTERNATIONAL GEMOLOGICAL INSTITUTE
LABORATORY GROWN DIAMOND REPORT

LABORATORY GROWN DIAMOND IDENTIFICATION REPORT
April 23, 2024
GIA Report Number: 1493119228
Description: LABORATORY GROWN DIAMOND
Shape and Cutting Style: Round Brilliant
Measurements: 5.16 - 5.19 x 3.08 mm

GRADING RESULTS
Carat Weight: 0.50 carat
Color Grade: F
Clarity Grade: VS2
Cut Grade: Excellent

ADDITIONAL GRADING INFORMATION
Polish: Excellent
Symmetry: Excellent
Fluorescence: Medium-Blue
Clarity Characteristics: Pigeon, Feather
Inscription(s): GIA 2498212194

PROPORTIONS
Table: 60.1%
Depth: 61.3%
Girdle: 0.40-0.45
Crown: 34.3%
Pavilion: 40.7%
Profile to actual proportions

RELATIVE SCALES
Table: 100%
Depth: 100%
Girdle: 100%
Crown: 100%
Pavilion: 100%
Profile to actual proportions



HIGH CARAT DIAMOND

Mr. Viral P

H NUMBER 1195 RAMPURA MAIN ROAD
MAHIDHARPURA SURAT 395003 GUJARAT INDIA

Call Us: +91-9979982772, 91-08048773885

Email: highcaratjewels@gmail.com

Web Address: www.highcaratdiamond.co.in

Web Page: www.exportersindia.com/high-carat