



POLINE

THE DOOR TO
**NEW
DIMENSIONS**



POLINE TECHNOLOGIES
PRIVATE LIMITED

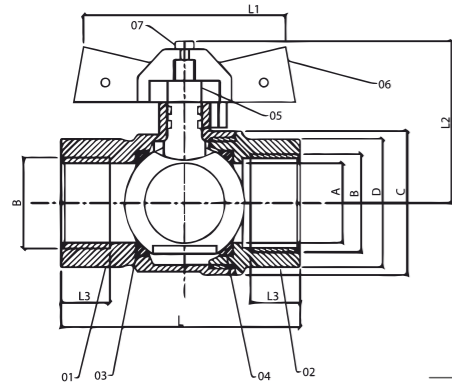
CORPORATE OFFICE
209, DEEPKAMAL COMMERCIAL HUB-1,
SARTHANA JAKATNAKA,
SURAT-395006, GUJARAT, INDIA
www.poline.in info@poline.in



www.neevads.com - 9898959959 - JS|07|23

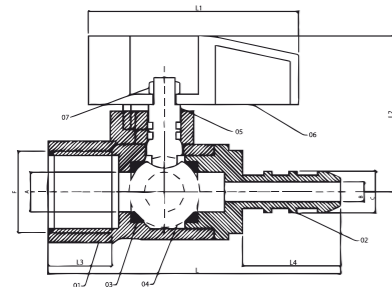
POLINE TECHNOLOGIES PRIVATE LIMITED

GAS



BALL VALVE SPECIFICATIONS

SIZE	DN	A	B	C	D	L1	L2	L3	L
½"	15	13.5	½"	29.2	24.5	51.5	40	15	56.5
¾"	20	19	¾"	37.5	32	51.5	44	15	66
1"	25	25	1"	45	40	66.5	52.5	18	75



BALL VALVE CAN BE USED FOR BELOW FUEL GASES:

- Town gas (1st Family)
- Natural gas (2nd Family)
- L.P.G. gas (3rd Family)



BRASS APPLIANCE VALVE (FEMALE)

SIZE	PRODUCT CODE	DN	L	OA	OB	OC	L1	L2	L4
1/4"	Sa12008	8	60	8	5.5	10	50.5	36	23.5
3/8"	Sa12010	10	66.8	10	5.5	10	50.5	38	23.5
1/2"	Sa12015	15	70.3	15	5.5	10	50.5	40	23.5

- The ball valve are full bore, quarter turn, handle operated, general purpose ball valves to control or stop the flow of fuel gases in any threaded piping systems.
- The valve body is made of UNS C37700 high-strength nickel plated brass by hot forging.
- 100% valves are tested at 9 bar air pressure according to standard EN 12266-1.



SPECIFICATIONS

Material	= Full brass forged body (Nickel plated)
Ball	= Diamond finished hard chrome plated
Spindle	= Blow out proof
Seat	= Virgin PTFE (Teflon)
Lever	= Steel with PVC sleeve (Chrome plated)
Butterfly	= Malleable Aluminum
End Threads	= BSP to ISO 228 both ends

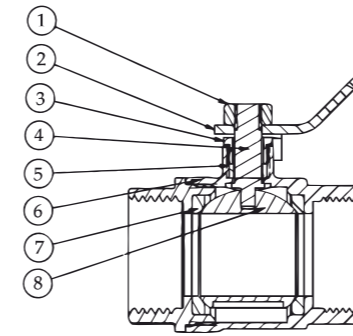
 **WORKING TEMPERATURE**
-20°C TO +180°C

 **Maximum Working Pressure**
upto 25 Bar

EN 331 EN331:2015
Compliance to latest V.

*Information provided is a guide only and is subject to possible modifications.

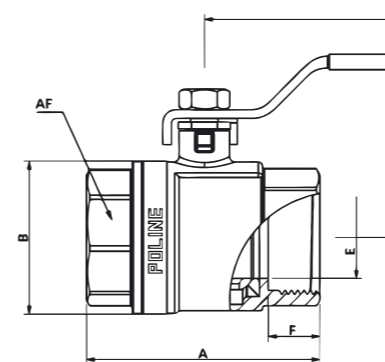
VALVES



MATERIAL SPECIFICATIONS

No.	QTY.	DESCRIPTION	MATERIAL	STANDARD
1	1	LOCK NUT	Brass CW614N	EN 12165
2	1	HANDLE	Steel with PVC sleeve	EN 10111
3	1	Gland Nut	Brass CW614N	EN 12165
4	1	SPINDLE	Brass CW617N	EN 12165
5	1	SEAL RING	PTFE	-
6	1	BODY	Brass CW617N (Nickel Plated)	EN 12165
7	2	SEAT RING	PTFE	-
8	1	BALL	Brass CW617N (Hard Chrome Plated)	EN 12165

TECHNICAL SPECIFICATIONS



SIZE	DN	A	B	C	D	E	F	AF
½"	15	51	27.8	42	100	13.5	13	23.5
¾"	20	56.5	35	45	99	19	14	29.5
1"	25	64	40.5	50	107	21.5	14.5	36.5
1¼"	32	75	55	70	125	30	16.5	46.5
1½"	40	84	58	72	142	32	17	51.5
2"	50	95	71	80	150	41.5	19	65

- The ball valve are full bore, quarter turn, handle operated, general purpose ball valves to control or stop the flow of liquid or some gases in any threaded piping systems.
- The valve body is made of Low lead CW 617N high-strength nickel plated brass by hot forging.
- 100% valves are tested at 6 bar air pressure according to standard EN 12266-1.
- Highly corrosion/rust resistant with hard water contact.
- The ball valves can be installed for flow in any direction (Bi-directional).



SPECIFICATIONS

Material	= Full brass forged body (Nickel plated)
Ball	= Diamond finished hard chrome plated
Spindle	= Blow out proof
Seat	= Virgin PTFE (Teflon)
Lever	= Aluminium cast lever
End Threads	= BSP to ISO 228 both ends

 **WORKING TEMPERATURE**
-20°C TO +180°C

 **Maximum Working Pressure**
upto 25 Bar

 **Safe for Drinking**
Water Application

*Information provided is a guide only and is subject to possible modifications.

BUTTERFLY ALUMINIUM VALVE



SPECIFICATIONS

Material	= Full brass forged body (Nickel plated)
Ball	= Diamond finished hard chrome plated
Spindle	= Blow out proof
Seat	= Virgin PTFE (Teflon)
Lever	= Butterfly aluminium cast / steel with PVC sleeve
End Threads	= BSP to ISO 228 both ends

- The ball valve are full bore, quarter turn, handle operated, general purpose ball valves to control or stop the flow of liquid or some gases in any threaded piping systems.
- The valve body is made of Low lead CW 617N high-strength nickel plated brass by hot forging.
- 100% valves are tested at 6 bar air pressure according to standard EN 12266-1.
- Highly corrosion/rust resistant with hard water contact.
- The ball valves can be installed for flow in any direction (Bi-directional).

NRV

NRV VALVES

SR	PRODUCT	SIZE MM	SIZE MM	PER BOX
1	NRV	1/2"	15MM	120 PCS
2	NRV	3/4"	20MM	72 PCS
3	NRV	1"	25MM	54 PCS
4	NRV	1" 1/4"	32MM	36 PCS
5	NRV	1 1/2"	40MM	24 PCS
6	NRV	2"	50MM	16 PCS



VERTICAL NRV



HORIZONTAL NRV

MALE FEMALE BALL VALVE

SIZE	1/4"	3/8"	1/2"	3/4"	1"
DN (MM)	8	10	15	20	25



SPECIFICATIONS

Material	= Full brass forged body (Nickel plated)
Ball	= Diamond finished hard chrome plated
Spindle	= Blow out proof
Seat	= Virgin PTFE (Teflon)
Lever	= Steel with pvc sleeve
End Threads	= BSP to ISO 228 both ends

MINI BALL VALVE

(F x F) (M x F)

SIZE	SIZE
1/4"	1/4"
3/8"	3/8"
1/2"	1/2"



BRASS Y-STRAINER

SPECCUFUCATION STANDARDS

PIPE THREAD END IS ACCORDING : ISO 228 (DIN 259)
BS 21 (JIS B0203)

FEATURES

1. SCREWED AND BSPT/PP CONNECTION
2. FORGED BRASS
3. CLEANUNG OF SCREEN WITHOUT DISASSCMBLING
4. Y - PATTERN BODY DESIGN
5. SCREWED CAP

SIZE

1/2"
3/4"
1"



BRASS NOZZLE BIB COCK

SPECIFICATIONS

Material	= Full Brass forged body
Spindle	= Blow out proof
Lever	= Steel with PVC sleeve
End threads	= BSP to ISO 228
FEATURE	= Rust proof, Leak proof
SIZE	= 1/2"(15mm)



CONTROL VALVE



SIZE : 1/2"
FINISH : CHROME PLATED



SIZE : 3/4"
FINISH : CHROME PLATED



SIZE : 1"
FINISH : CHROME PLATED

CLAMP

CHILLI CLAMP / NUT CLAMP / RUBBER CLAMP

SR	PRODUCT	DESCRIPTION	SIZE MM	SIZE MM	PER BOX
1	NUT CLAMP WITH RUBBER	1.2MM = 18MM	1/2"	18MM	600 PCS
2	NUT CLAMP WITH RUBBER	1.2MM = 18MM	3/4"	25MM	550 PCS
3	NUT CLAMP WITH RUBBER	1.2MM = 18MM	1"	32MM	500 PCS
4	NUT CLAMP WITH RUBBER	1.2MM = 18MM	1" 1/4"	40MM	400 PCS
5	NUT CLAMP WITH RUBBER	1.2MM = 18MM	1.5"	50MM	350 PCS

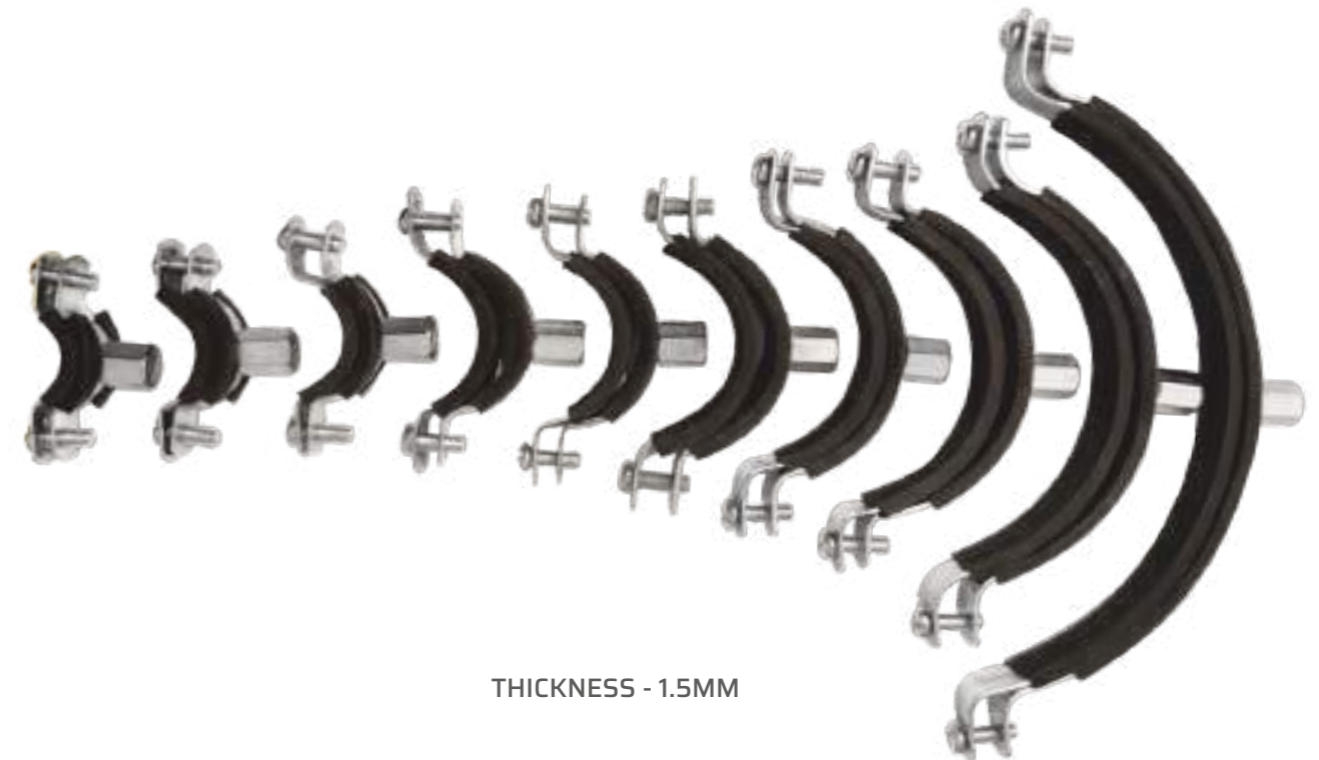


CHILLI CLAMP / NUT CLAMP / RUBBER CLAMP

SR	PRODUCT	DESCRIPTION	SIZE MM	SIZE MM	PER BOX
1	NUT CLAMP WITH RUBBER	2MM = 20MM	1/2"	18MM	550 PCS
2	NUT CLAMP WITH RUBBER	2MM = 20MM	3/4"	25MM	500 PCS
3	NUT CLAMP WITH RUBBER	2MM = 20MM	1"	32MM	450 PCS
4	NUT CLAMP WITH RUBBER	2MM = 20MM	1" 1/4"	40MM	350 PCS
5	NUT CLAMP WITH RUBBER	2MM = 20MM	1.5"	50MM	300 PCS
6	NUT CLAMP WITH RUBBER	2MM = 20MM	2"	63MM	285 PCS
7	NUT CLAMP WITH RUBBER	2MM = 20MM	2.5"	75MM	250 PCS
8	NUT CLAMP WITH RUBBER	2MM = 20MM	3"	90MM	215 PCS
9	NUT CLAMP WITH RUBBER	2MM = 20MM	4"	110MM	150 PCS
10	NUT CLAMP WITH RUBBER	2MM = 20MM	6"	160MM	100 PCS
11	NUT CLAMP WITH RUBBER	2MM = 20MM	8"	200MM	80 PCS

RUBBER TYPE

EPDM



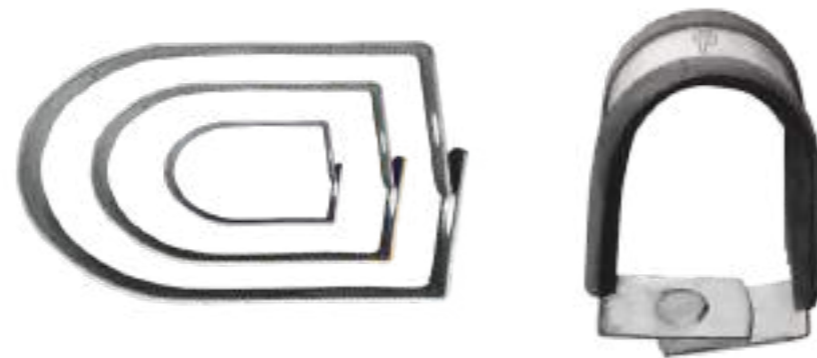
CHILLI CLAMP / NUT CLAMP / RUBBER CLAMP

SR	PRODUCT	DESCRIPTION	SIZE MM	SIZE MM	PER BOX
1	NUT CLAMP WITH RUBBER	1.5MM = 18MM	1/2"	18MM	600 PCS
2	NUT CLAMP WITH RUBBER	1.5MM = 18MM	3/4"	25MM	550 PCS
3	NUT CLAMP WITH RUBBER	1.5MM = 18MM	1"	32MM	500 PCS
4	NUT CLAMP WITH RUBBER	1.5MM = 18MM	1" 1/4"	40MM	400 PCS
5	NUT CLAMP WITH RUBBER	1.5MM = 18MM	1.5"	50MM	350 PCS
6	NUT CLAMP WITH RUBBER	1.5MM = 18MM	2"	63MM	300 PCS
7	NUT CLAMP WITH RUBBER	1.5MM = 18MM	2.5"	75MM	250 PCS
8	NUT CLAMP WITH RUBBER	1.5MM = 18MM	3"	90MM	225 PCS
9	NUT CLAMP WITH RUBBER	1.5MM = 18MM	4"	110MM	180 PCS
10	NUT CLAMP WITH RUBBER	1.5MM = 18MM	6"	160MM	115 PCS
11	NUT CLAMP WITH RUBBER	1.5MM = 18MM	8"	200MM	100 PCS

CLAMPS ARE AVAILABLE WITH AND WITHOUT RUBBER

G.I. SPRINKLER CLAMP WITH RUBBER GRIP

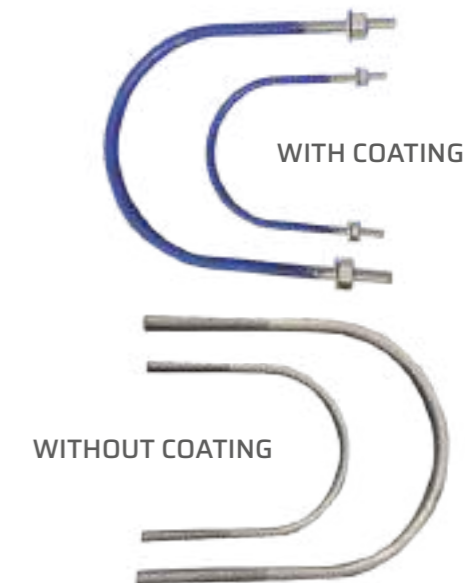
SIZE	SIZE MM
1"	32MM
1 1/2"	40MM
1 1/2"	50MM
2"	63MM
2 1/2"	75MM
3"	90MM
4"	110MM
6"	160MM
8"	200MM



Order separately to make a 25 mm width

G.I. U BOLT PVC COATED

SR	SIZE MM	SIZE IN	THICKNESS
1	23	1/2"	8MM
2	30	3/4"	8MM
3	35	1"	8MM
4	45	1.25"	8MM
5	50	1.5"	8MM
6	60	2"	8MM
7	75	3"	8MM
8	90	4"	8MM
9	115	6"	8MM
10	165	8"	8MM
11	200	10"	8MM
12	270	12"	8MM
13	350	12"	8MM



Thickness 10mm, 12mm available on order only

SADDLE CLAMP

SIZE	SIZE MM
1/2"	18MM
3/4"	25MM
1"	32MM



THICKNESS - 1MM | WIDTH - 1.5MM

AVAILABLE WITH AND WITHOUT PVC COATED

PRODUCT	WASHER	NUT
G.I U BOLT PVC COATED	2	2
G.I U BOLT WITHOUT PVC COATED	-	-

DISTANCE CLAMP

SIZE	SIZE MM
1/2"	18MM
3/4"	25MM
1"	32MM



THICKNESS - 1MM | WIDTH - 1.5MM

FITTING

PIPE NIPPLE

SR	PRODUCT	SIZE MM	LENGTH IN"	CLASS
1	PIPE NIPPLE	15MM	2,2,3,4,5,6,8,10,12...	C,B,A, LITE
2	PIPE NIPPLE	20MM	2,2,3,4,5,6,8,10,12...	C,B,A, LITE
2	PIPE NIPPLE	25MM	2,2,3,4,5,6,8,10,12...	C,B,A, LITE
4	PIPE NIPPLE	35MM	2,2,3,4,5,6,8,10,12...	C,B,A, LITE
5	PIPE NIPPLE	10MM	2,2,3,4,5,6,8,10,12...	C,B,A, LITE
6	PIPE NIPPLE	50MM	2,2,3,4,5,6,8,10,12...	C,B,A, LITE
7	PIPE NIPPLE	65MM	2,2,3,4,5,6,8,10,12...	C,B,A, LITE
8	PIPE NIPPLE	80MM	2,2,3,4,5,6,8,10,12...	C,B,A, LITE
9	PIPE NIPPLE	100MM	2,2,3,4,5,6,8,10,12...	C,B,A, LITE



Available in all material like G.I, M.S, BRASS, S.S etc. custom length sizes can be manufactured based on order requirements.

TEFLON TAPE

SPECIFICATIONS

P.T.F.E. SEALING TAPE

LENGTH = 10 MTR
 DIMENSION = 12MM X 0.1MM X 10 MM
 DENSITY = 0.45 G/CM³



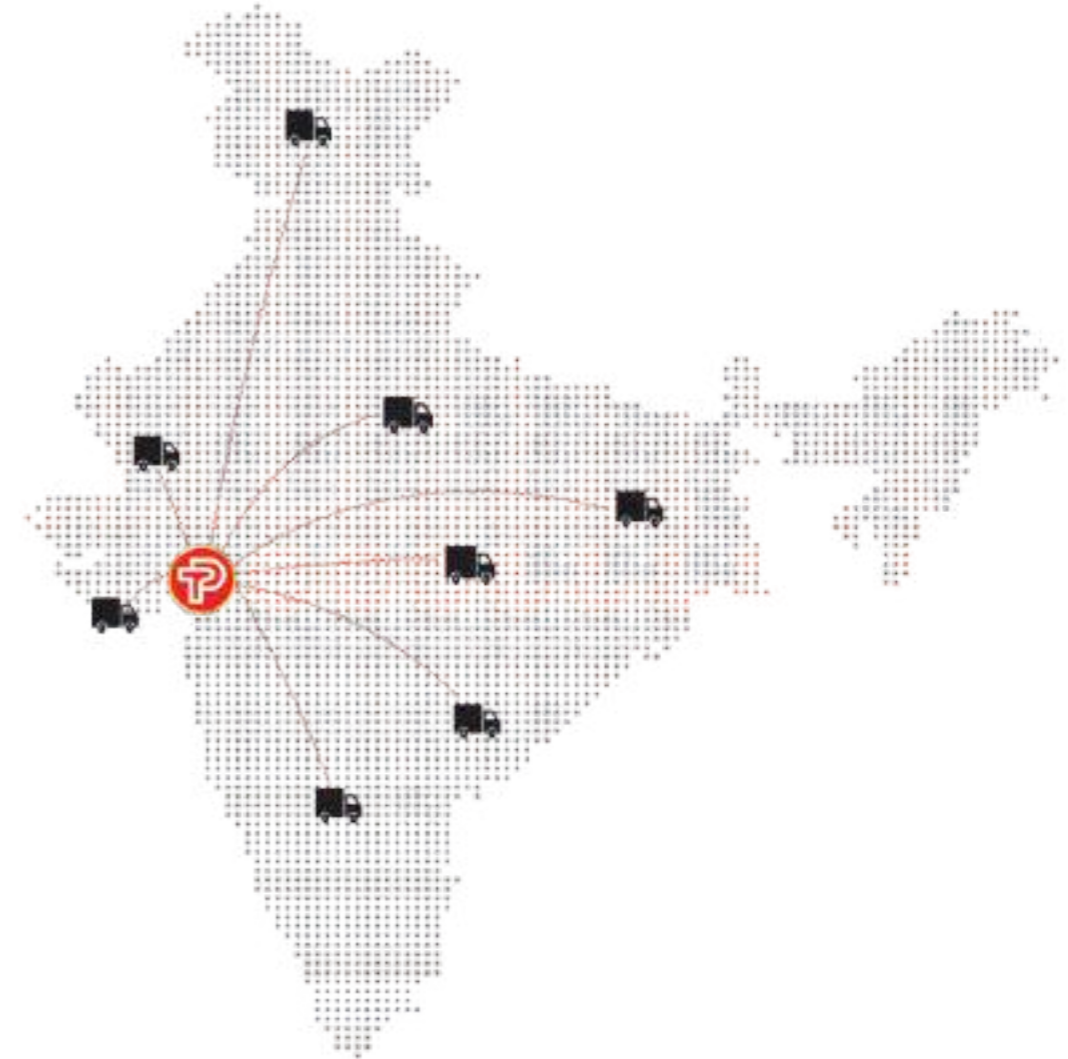
WASTE COUPLING

SPECIFICATIONS

MATERIAL = BRASS
 USAGE / APPLICATION = KITCHEN SINK
 THREAD TYPE = FULL THREAD
 SIZE = 3 INCH
 SURFAVE FINISHING = POLISHED



DELIVERING EXCELLENCE, BEYOND EXPECTATIONS



We have a well-established supply network that makes product delivery extremely convenient. We have an efficient crew that guarantees all of our orders are ready for delivery on time. Our efficient services have earned us clientele from all across India, and we make sure to deliver everything on time.

*Information provided is a guide only and is subject to possible modifications.