

# ZENITH

SINCE: 2025

Parent: **Viona Textiles**

We are a Delhi Based Garment manufacturer  
SINCE 2025 - From manufacturing to all  
Printing options (INHOUSE). We supply most  
clothing brand over PAN India.

What makes us special is our 500pcs M O Q  
Offer which offers flexibility for startups to  
start with the lowest budget from their savings.  
Below is the list of all products we deal in.

**A Fact: We work over customizations as well.**

## Our Catalogue:

**See What's New this Year:**

***Zenith Group***

# Products (We are Making) :

## Tshirts:

### Regular Fit

- 180GSM (Cotton Sinker) - 160₹ Ready Stock
- 180GSM (Cotton Slub) - 150₹ On Order only
- 180GSM (Cotton Lycra) - 205₹ Ready Stock
- 210GSM (Single Jersey) - 180₹ On Order only
- 220GSM (Cotton Lycra) - 245₹ On Order only
- 240GSM (French Terry) - 215₹ On Order only

### Tank Top

- 180GSM (Cotton Sinker) - 160₹ On Order only
- 210GSM (Single Jersey) - 185₹ On Order only
- 240GSM (French Terry) - 215₹ On Order only

### Polo Tshirt

- 180GSM (Cotton Lycra) - 260₹ Ready Stock
- 220GSM (Pique Lycra) - 340₹ Ready Stock

## Trousers:

### Regular Fit

- 240GSM FRENCH TERRY LYCRA 460₹ Ready Stock

### Oversized Fit

- 180GSM (Cotton Sinker) - 180₹ Ready Stock
- 180GSM (Cotton Lycra) - 220₹ On Order only
- 210GSM (Streetwear) - 195₹ Ready Stock
- 210GSM (Raglan Half) - 225₹ On Order only
- 210GSM (Half Shade) - 255₹ On Order only
- 220GSM (Cotton Sinker) - 215₹ On Order only
- 220GSM (Cotton Lycra) - 275₹ On Order only
- 230GSM (GOLD Cotton) - 270₹ On Order only
- 240GSM (French Terry) - 235₹ Ready Stock
- 240GSM (Waffle) - 215₹ Ready Stock
- 280GSM (French Terry) - 280₹ On Order only
- 240GSM (Tye Dye) - 260₹ On Order only
- 240GSM (Stone Wash) - 275₹ On Order only
- 280GSM (BOXY FULLSLEV) - 325₹ Ready Stock

### Compression Tshirt:

- 180GSM (Half Sleeves) - 170₹ On Order only
- 180GSM (Full Sleeves) - 199₹ On Order only

fabric: POLYSTER SPANDEX

### Straight Fit

- 210GSM (Single Jersey) - 355₹ On Order only
- 240GSM (French Terry) - 385₹ On Order only
- 280GSM (French Terry) - 425₹ On Order only
- 350GSM (COTTON Fleece) - 550₹ On Order only

## Shorts:

- 180GSM (Cotton Sinker) - 150₹ On Order only
- 210GSM (Single Jersey) - 165₹ On Order only
- 240GSM (French Terry) - 180₹ On Order only

## CropTops:

- 180GSM (Cotton Sinker) - 120₹ On Order only
- 180GSM (Cotton Lycra) - 130₹ On Order only
- 210GSM (Single Jersey) - 130₹ On Order only
- 220GSM (Cotton Lycra) - 180₹ On Order only
- 240GSM (French Terry) - 140₹ On Order only

## Sweatshirts:

- 280GSM (French Terry) - 350₹ Ready Stock
- 350GSM (Cotton Fleece) - 480₹ Ready Stock

## Hoodies:

### Regular Fit

- 280GSM (PC FLEECE) - 390₹ Ready Stock
- 280GSM (PC FLEECE- Zipper) - 460₹
- 350GSM (Cotton Fleece) - 550₹ On Order only
- 420GSM (Cotton Fleece) - 620₹ On Order only

### Oversized Fit

- 280GSM (PC FLEECE) - 420₹ On Order only
- 350GSM (Cotton Fleece) - 590₹ Ready Stock
- 420GSM (Cotton Fleece) - 650₹ On Order only

*And We aren't limited just to these, We do all kinds of customizations too.*

*We also have all types of **Printing Options (Inhouse)***

#### Ready Stock

This means, we keep these products in ready stock, You can order this under our 30 Piece MOQ (Mix Colors/sizes) .

#### On Order only

These are products, we don't keep in stock, only samples available. Moq for these would be 30Pc/ Color ( If you choose from our ready stock colors). Otherwise if needed new colors then MOQ may varies like 60-70pcs/color

# ZENITH

Regular Tees

# Catalogue



***Zenith Group***



1

# Cotton Sinkers (100% Cotton)

( **180 GSM** Regular Fit T-shirt )

Colors:



Black



White



Beige



Lavender



Light Blue



Light Gray



Brown

Sizes:

**S, M, L, XL, XXL**

Rs. 160



*Zenith Group*

# Photoshop & Features:

100% Cotton

Biowashed: Enzyme-treated for softness

Silicon Wash: Softens fabric with silicone chemicals.



**ON-ORDER :60 Colors available. Single color 100 Pieces M O Q**



These 60 Colors are available for **ON-ORDER**. MOQ  
100pc/ Color.

Other than, if your pick our ready stock Colors mentioned  
above, MOQ is 30 (Mix size/colors).



Fabric Zoomed Photo - Normal Camera



1.1

# 180GSM TANK-TOP

(180 GSM 100% cotton Bio washed)

Colors:



Black



White



Beige



Lavender



Light Gray



Brown

Sizes:

**S, M, L, XL, XXL**

MOQ:

**30 Piece/ Color**

Rs. 160



For On-order: 21 Colors available. Single color 100 Pieces M O Q





- Super Light weight
- Perfect for summers
- Bio Washed Fabric
- 30PCS MOQ / COLOR

**For On-order: 21 Colors available. Single color 100 Pieces M O Q**

2

# 180GSM Cotton Slub

(180 GSM Cotton Slub Tshirt)

Colors:



Wine



On Order Colors

Sizes:

**S, M, L, XL, XXL**



Rs. 150



For On-order: 21 Colors available. Single color 100 Pieces M O Q

**For On-order: 21 Colors available. Single color 70 Pieces M O Q**



These 16 Colors are available for **ON-ORDER**. MOQ 70pc/ Color.

Other than, if your pick our ready stock Colors mentioned above, MOQ is 30 (Mix size/colors).

**Samples Charges 300 rs**

***Zenith Group***



3

Premium\*

# 95% Cotton 5% Lycra

( **180 GSM** Regular Fit T-shirt )

Colors:



Black



White



Marron



Lavender



Teal Color



Pista



millennial pink

Sizes:

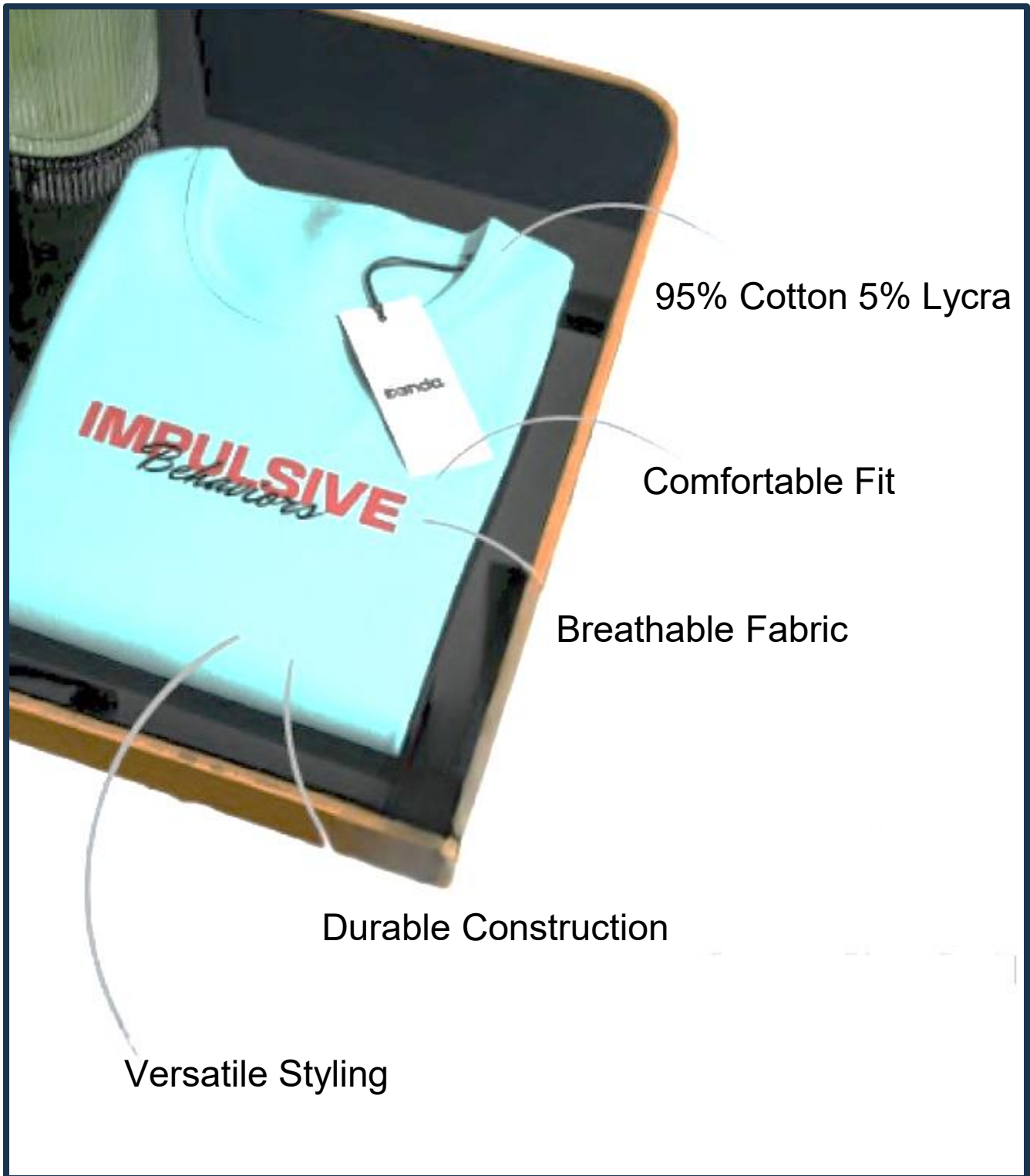
**S, M, L, XL, XXL**

Rs. **205**



Comes with double needling & double stitching

For On-order : 40 Colors available. Single color 100 Pieces M O Q



The advantages of Cotton Lycra include comfortable stretch, breathable fabric, versatility in styling, durability, and a perfect blend of cotton's softness with spandex's elasticity for a comfortable and long-lasting garment.

# Photoshop & Features:

95% Cotton 5% Lycra

Softness: offers a comfortable wearing experience.

Stretchability: Providing flexibility and ease of movement.

Gold Finish





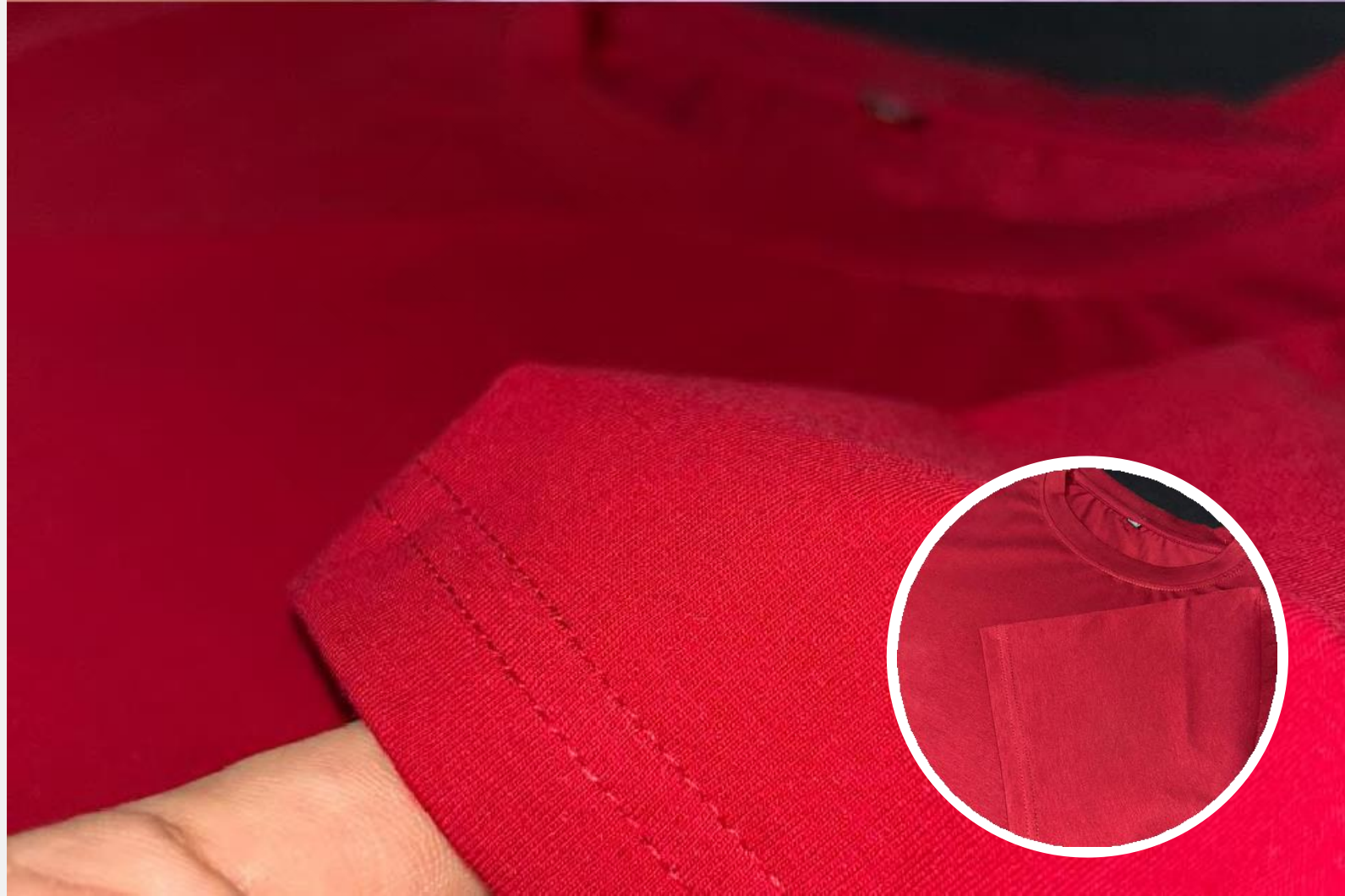
**ON-ORDER : 60 Colors available. Single color 100 Pieces M O Q**



These 60 Colors are available for **ON-ORDER**. MOQ  
100pc/ Color.

Other than, if your pick our ready stock Colors mentioned  
above, MOQ is 30 (Mix size/colors).

## Fabric Zoomed Photo - Normal Camera



(Regular fit)

# Size Chart

Size	Chest	Length	Shoulder
S	38	27.5	16.5
M	40	28	17.5
L	42	28.5	18.5
XL	44	29	19.5
XXL	46	29.5	20.5

Size in Inches

@Zenithgroup

*For Custom Size, Quantity must be maintained at least **100 piece** in single color , Size pattern Fee is also charged.*

**Zenith Group**



Premium\*

4

# Cotton Lycra Polo Tshirt

( **180 GSM** polo Fit T-shirt )

Colors:



Black



White



millennial pink



powder blue



Pista Color

Sizes: **S, M, L, XL, XXL**

Rs. 260



For On-order : 40 Colors available. Single color 100 Pieces M O Q

# Photoshop & Features:

95% Cotton 5% Lycra

Softness: offers a comfortable wearing experience.

Stretchability: Providing flexibility and ease of movement.

Gold Finish





**ON-ORDER : 60 Colors available. Single color 100 Pieces M O Q**



These 60 Colors are available for **ON-ORDER**. MOQ  
100pc/ Color.

Other than, if your pick our ready stock Colors mentioned  
above, MOQ is 30 (Mix size/colors).



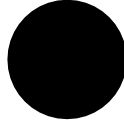
Premium\*

4.1

# Pique Lycra - Half Zip

( 220 **GSM** matty-lycra polo tshirt )

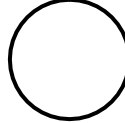
Colors:



Black



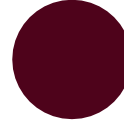
millennial pink



White



Pista Color

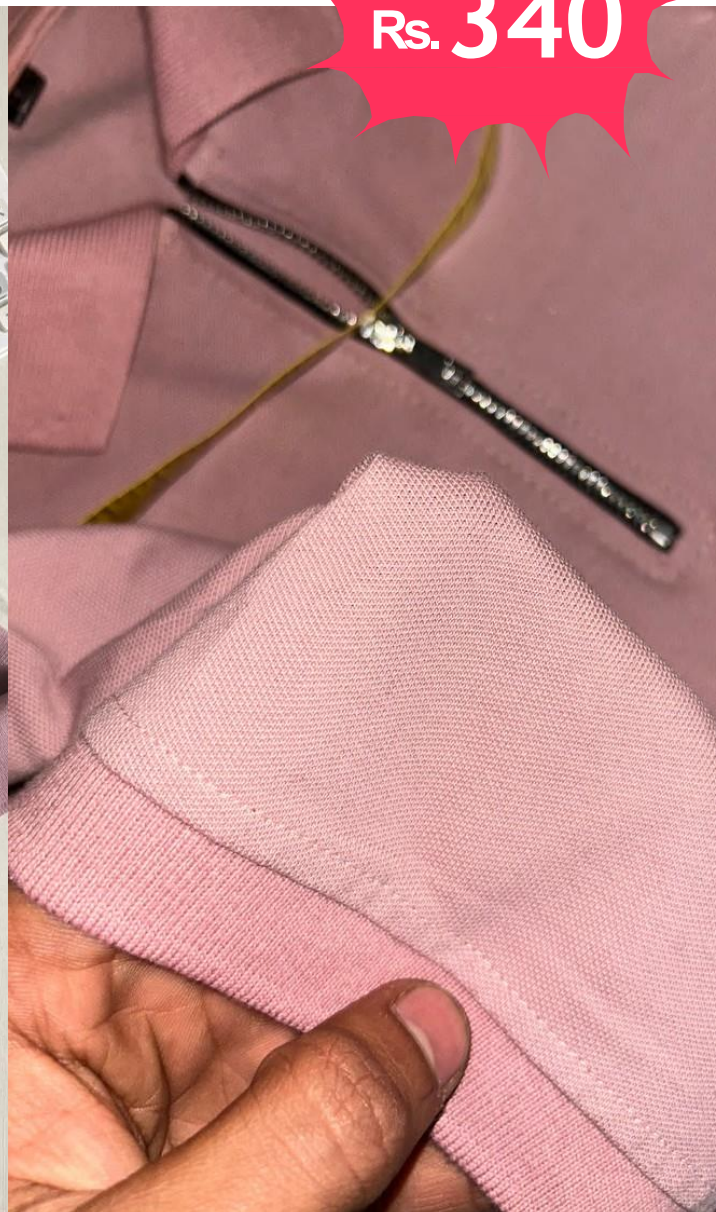


Marron

Sizes:

**S, M, L, XL, XXL**

Rs. 340

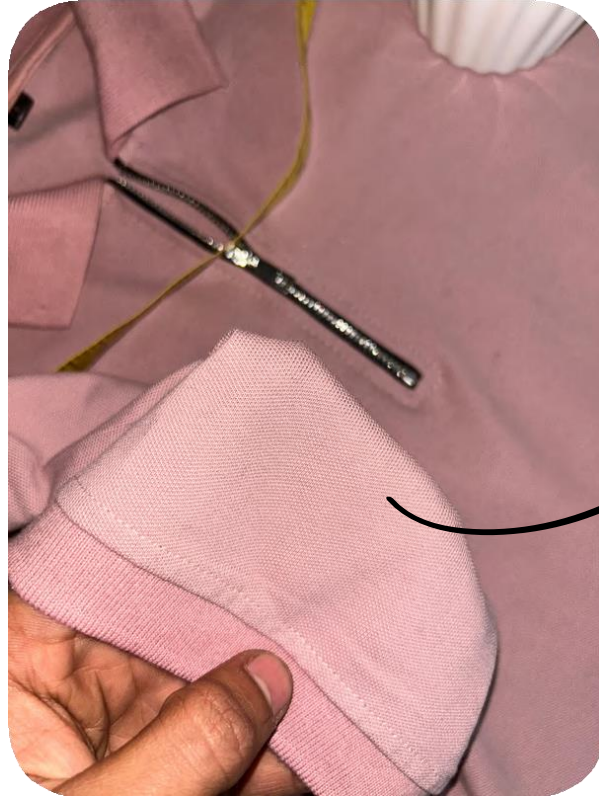


For On-order : 10 Colors available. Single color 100 Pieces M O Q



For On-order : 10 Colors available. Single color 100 Pieces M O Q

Cotton Collar & Patti



Matty Fabric



Metallic Zipper

**Contains Lycra for Extra Comfort**



For On-order : 40 Colors available. Single color 100 Pieces M O Q



These 10 Colors are available for **ON-ORDER**. MOQ  
100pc/ Color.

Other than, if you pick our ready stock Colors mentioned  
above, MOQ is 30 (Mix size/colors).

**Samples Charges 500 rs**

***Zenith Group***

# ZENITH

Streetwear & Fashion

# Catalogue



*Zenith Group*



5

# 100% Cotton Streetwear

(210 **GSM** Oversized T-shirt)

Colors:



Black



White



Brown



Emerald green



Red



Lavender



Biege



Coffee



Steel Blue

Sizes:

**S, M, L, XL, XXL** (+5rs)

Rs. 195



# Photoshop & Features:

100% Cotton

Double Biowashed: Two rounds of enzyme treatments for enhanced softness and texture in fabric.

Silicon wash: Softens fabric with silicone chemicals.



For On-order: 31 Colors available. Single color 80 Pieces M O Q



These 31 Colors are available for **ON-ORDER**. MOQ 80pc/ Color.

Other than, if your pick our ready stock Colors mentioned above, MOQ is 30 (Mix size/colors).



## Fabric Zoomed Photo - Normal Camera



5<sup>1</sup>

# 210GSM - Half-Shade Wash

(210 GSM Oversized 100% Cotton T-shirt)

Colors:



Black



White



Brown



Emerald green



Red



Lavender



Biege



Coffee



Steel Blue

Sizes:

**S, M, L, XL, XXL**

MOQ:

**30 Piece/Color**

**Rs. 255**





5.2

# Raglan Half Sleeve Tshirt

(210 GSM Oversized 100% Cotton T-shirt)

Colors:



Black



White



Brown



Emerald green



Red



Lavender



Biege



Coffee



Steel Blue

Sizes:

**S, M, L, XL, XXL**

MOQ:

**30 Piece/Color**

**Rs. 230**



6

# 230GSM Gold Cotton

(230-240 **GSM** Oversized T-shirt)

Colors:



Grey



On Order Colors

Sizes:

S, M, L, XL, XXL

Rs. 275



Comes with double needling & double stitching

For On-order: 21 Colors available. Single color 70 Pieces M O Q

# Photoshop & Features:

100% Cotton

Biowashed: Enzyme treatments for enhanced softness and texture in fabric.

Gold Finished Fabric





6.1

# 220GSM - Cotton Sinker

(220 **GSM** 100% Cotton sinker Oversized T-shirt)

Colors: **On Order Only** (Samples Available)

Sizes: **S, M, L, XL, XXL**

Rs. 215



For On-order: 21 Colors available. Single color 75 Pieces M O Q

For On-order: 21 Colors available. Single color 75 Pieces M O Q



These 21 Colors are available for **ON-ORDER (For both cotton sinker GOLD -SINKER & NORMAL SINKER)** . MOQ 70pc/ Color.

Other than, if your pick our ready stock Colors mentioned above, MOQ is 30 (Mix size/colors).

**Samples Charges 300 rs**

6.2

# 220GSM - Cotton Lycra

(96% Cotton 4% Spandex **ULTRA LUXARY** Fabric)

Colors:

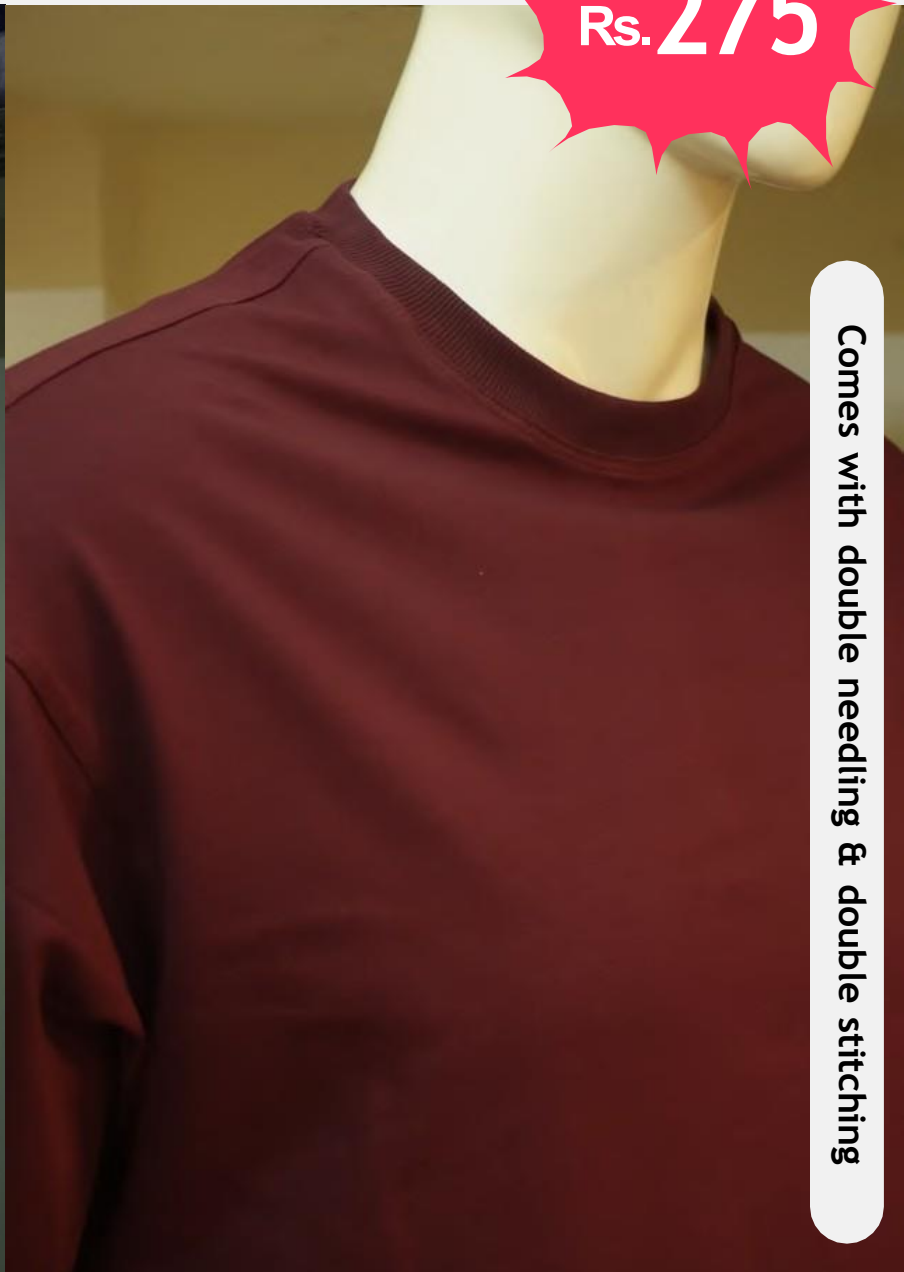
**On Order Only**

(Samples Available)

Sizes:

**S, M, L, XL, XXL**

Rs. 275



Comes with double needling & double stitching

For On-order: 20 Colors available. Single color 75 Pieces M O Q



For On-order: 20 Colors available. Single color 75 Pieces M O Q



These 21 Colors are available for **ON-ORDER**. MOQ 75pc/  
Color.

Sample charges: **400rs**

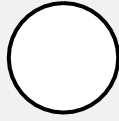
***Zenith Group***

7

# French Terry 240 GSM

(240 **GSM** Oversized T-shirt Loopknit )

Colors:



White



Black



Lavender



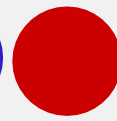
Beige



crystal teal



Royal Blue  
(+5Rs)



Red



Baby Pink



Charcoal



Orange

Sizes:

**S, M, L, XL, XXL**

Rs. **235**

Comes with double needling & double stitching

For On-order: 25 Colors available. Single color 70 Pieces M O Q



# Photoshop & Features:

100% Cotton

**Biowashed:** Enzyme treatments for enhanced softness and texture in fabric.

**Breathability & Enhanced absorbency:**

Loop knit design promotes air circulation, aiding in temperature regulation

Lavender

Crystal Teal

Baby Pink





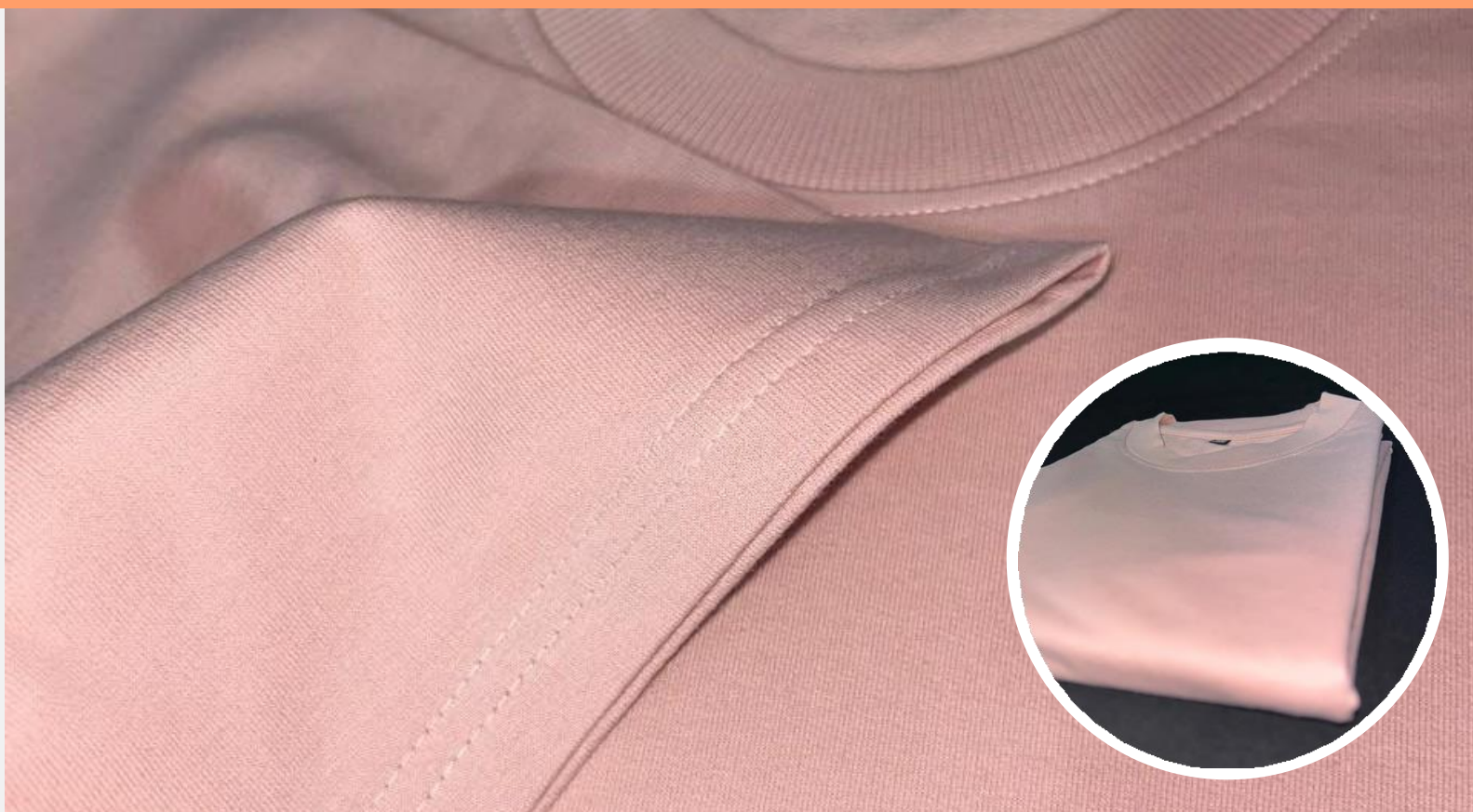
For On-order: 41 Colors available. Single color 70 Pieces M O Q



These 41 Colors are available for **ON-ORDER**. MOQ 70pc/ Color.

Other than, if your pick our ready stock Colors mentioned above, MOQ is 30 (Mix size/colors).

## Fabric Zoomed Photo - Normal Camera





7.1

# French Terry 280 GSM

(280 **GSM** Oversized FULL SLEEVE )

Colors:



brown



Black



Chinese  
violet



Charcoal

Sizes:

**S, M, L, XL**

Rs. 325



Comes with double needling & double stitching

For On-order: 25 Colors available. Single color 70 Pieces M O Q





**For On-order: 16 Colors available. Single color 50 Pieces M O Q**



These 16 Colors are available for **ON-ORDER**. MOQ **55**pc/Color.

Other than, if your pick our ready stock Colors mentioned above, MOQ is 30 (Mix size/colors).



8

# Waffle 240 GSM

(240 **GSM** Oversized T-shirt )

Colors:



Off-White



Black



Lavender



Coffee

Sizes:

**S, M, L, XL, XXL**

Rs. **215**

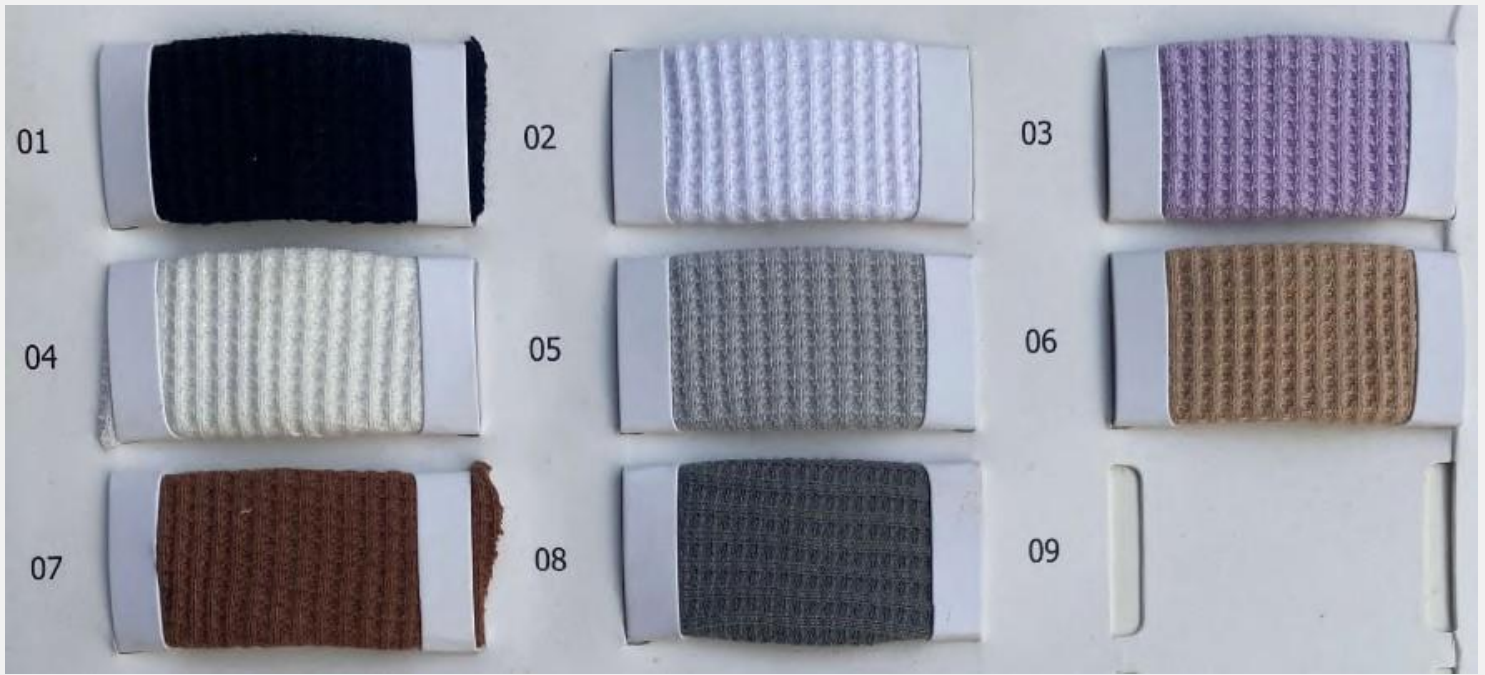


Comes with double needling & double stitching

For On-order: 8 Colors available. Single color 70 Pieces M O Q



For On-order: 8 Colors available. Single color 70 Pieces M O Q



These 8 Colors are available for **ON-ORDER**. MOQ 75pc/  
Color.

Other than, if your pick our ready stock Colors mentioned  
above, MOQ is 30 (Mix size/colors).

**Samples Charges 300 rs**

(Oversize fit)

# SizeChart

Size	Chest	Length	Shoulder	Sleeves
S	42	27.5	21.5	8.8
M	44	28	22.5	9
L	46	28.5	23.5	9.2
XL	48	29	24.5	9.4
XXL	50	29.5	25.5	9.6

Size in Inches

@ZenithGroup

*For Custom Size, Quantity must be maintained at least **100 piece** in single color , Size pattern Fee is also charged.*

**Zenith Group**

9

# 240GSM - CHEMICAL DYE

(240 GSM Oversized T-shirt Loopknit )

Colors:



White



Black



Lavender



Beige



crystal teal



Royal Blue



Red



Baby Pink



Charcoal

Sizes:

**S, M, L, XL, XXL**

MOQ:

**10 Piece/ color**

**Rs. 255**



Comes with double needling & double stitching

**Zenith Group**



9.1

# 240GSM - Tye Dye

(240 GSM Oversized T-shirt Loopknit )

Colors:



White



Black



Lavender



Beige



crystal teal



Royal Blue



Red



Baby Pink



Charcoal

Sizes:

**S, M, L, XL, XXL**

MOQ:

**30 Piece/ Pattern**

**Rs. 270**

10is / 6ddio-ial coloi



Comes with double needling & double stitching



1. Pattern One

2. Pattern two



3. Pattern Three





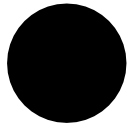


9.2

# 240GSM - Stone Washed

(240 GSM Oversized T-shirt Loopknit )

Colors:



White



Black



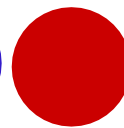
Lavender



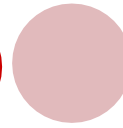
Beige



crystal teal



Royal Blue



Red



Baby Pink

Charcoal

Sizes:

**S, M, L, XL, XXL**

MOQ:

**20 Piece/Color**

**Rs. 275**



Comes with double needling & double stitching





**Charcoal**



**Royal Blue**



**Lavender**



**Black**

***Zenith Group***

9.3

# 240GSM - Baggy Trouser

(240 GSM Oversized Loopknit )

**Colors: 40+ Colors ON ORDER**

**Sizes: S, M, L, XL, XXL**

**MOQ: 50 Piece/ color**

**Rs. 395**





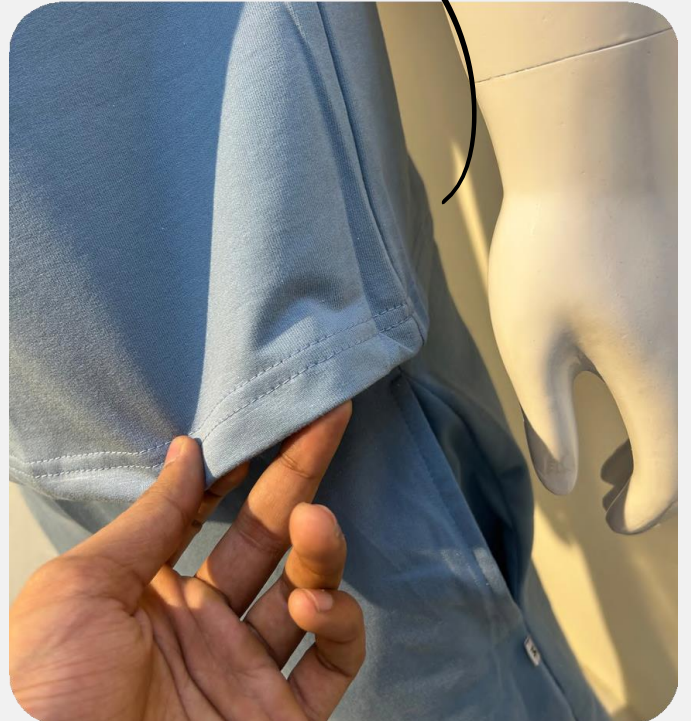


DOUBLE  
STITCHING



Heavy GSM Heavy Gauge

Silicon & Bio Washed



**Zenith Group**

For On-order: 41 Colors available. Single color 50 Pieces M O Q



These 41 Colors are available for **ON-ORDER**. MOQ 50pc/ Color.

Other than, if your pick our ready stock Colors mentioned above, MOQ is 30 (Mix size/colors).

**SAMPLE CHARGES : 500rs.**

*Zenith Group*



ZENITH

Hoodies & Winterwears

# Catalogue



**Zenith Group**

10

# Sweatshirts French Terry

( 100% Combed Cotton- Terry, **280GSM**)

Colors:



White



Black



Peach



Teal



Skyblue



Charcoal Grey

Sizes:

**S, M, L, XL, XXL**

Rs. 350



For On-order: 28 Colors available. Single color 50 Pieces M O Q



# Photoshop & Features:

**Regular Fit (Not Oversized)**

**100% Cotton**

**Biowashed:** Enzyme treatments for enhanced softness and texture in fabric.

**Breathability & Enhanced absorbency:**

Loopknit design promotes air circulation, aiding in temperature regulation



Loopknit Fabric,  
100% Cotton

Cotton Premium Rib



Quality in Every  
thread



**Zenith Group**

# Photoshop & Features:

**Regular Fit (Not Oversized)**

**100% Cotton**

**Biowashed:** Enzyme treatments for enhanced softness and texture in fabric.

**Breathability & Enhanced absorbency:**

Loopknit design promotes air circulation, aiding in temperature regulation





**For On-order: 16 Colors available. Single color 50 Pieces M O Q**



These 16 Colors are available for **ON-ORDER**. MOQ **55**pc/Color.

Other than, if your pick our ready stock Colors mentioned above, MOQ is 30 (Mix size/colors).

# SizeChart

## Regular Sweatshirts

Size	Chest	Length	Shoulder
S	40	26.5	17
M	42	27.5	18
L	44	28	19
XL	46	28.5	20
XXL	48	29	21

Size in Inches

@Zenithgroup

*For Custom Size, Quantity must be maintained at least **35 piece** in single color , Size pattern Fee is also charged.*



11

# Hoodie Pc Cotton-Fleece

(Regular Fit Hoodie, **280-290 GSM**)

Colors:



White



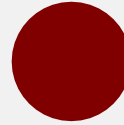
Black



Lavender



Orange  
Red



Marron



Brown

Sizes:

**S, M, L, XL, XXL**

Rs.390

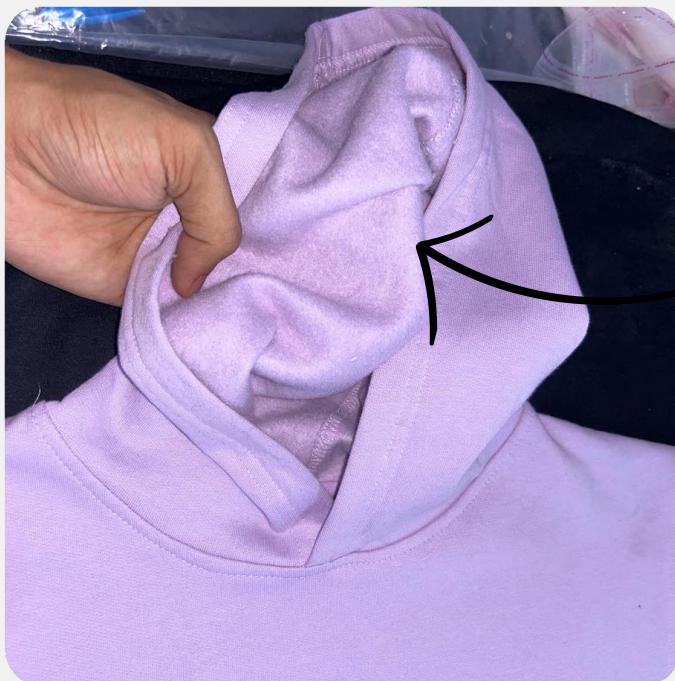
For On-order: 28 Colors available. Single color 45 Pieces M O Q

# Photoshop & Features:

**Regular Fit ( Not Oversized )**

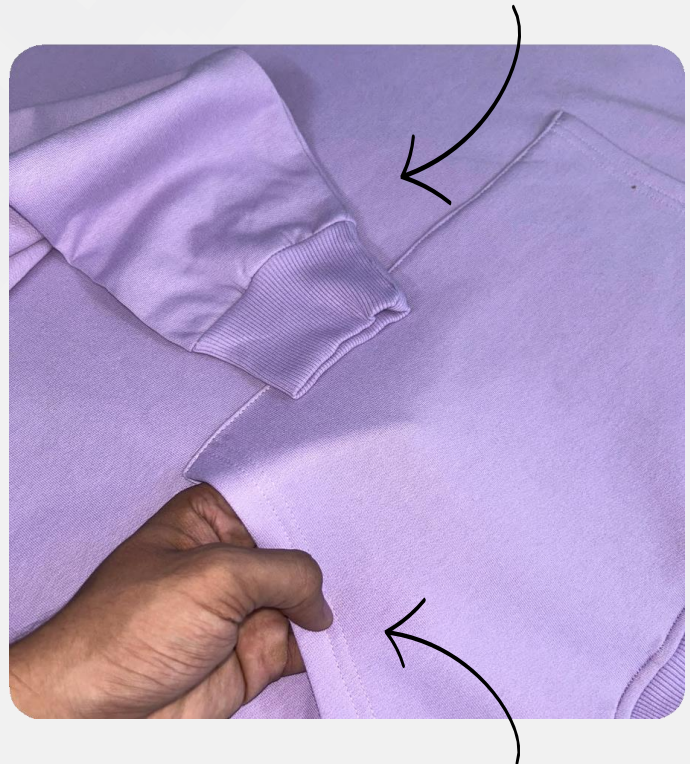
**Warmth:** The fleece lining provides good insulation, making it warm enough for cooler weather without being too heavy.

less likely to cause irritation or allergic reactions, making it a good choice for those with sensitive skin.



Fleece Inside

Cotton Premium Rib



Kangaroo Pocket

Double Sticking





# Photoshop & Features:

## Regular Fit ( Not Oversized )

**Warmth:** The fleece lining provides good insulation, making it warm enough for cooler weather without being too heavy.

less likely to cause irritation or allergic reactions, making it a good choice for those with sensitive skin.



For On-order: 23 Colors available. Single color 50 Pieces M O Q



These 23 Colors are available for **ON-ORDER**. MOQ 50pc/ Color.

Other than, if your pick our ready stock Colors mentioned above, MOQ is 30 (Mix size/colors).

**Zenith Group**



Premium\*

12

# Hoodie Cotton-Fleece

(Oversized Hoodie, heavy gauge, **350 GSM**)

Colors:



Off-White



Black



Lavender



Beige



Silver Grey



Royal Blue



Sage Green



Brown



Red

Sizes:

**S, M, L, XL, XXL**

Rs. 590



For On-order: 28 Colors available. Single color 30 Pieces M O Q

# Photoshop & Features:

## Oversized Perfect Hoodie

**Warmth:** The fleece lining provides good insulation, making it warm enough for cooler weather without being too heavy.

**Heavy gauge fabric** Makes it more durable, thicker for Winter.  
**Gold Finished Fabric**



Fleece Inside



Kangaroo Pocket



Cotton & Premium Rib Used

Cotton Fabric Layered  
Inside Hood





Double Stitching & High-end Finishing



**Zenith Group**



**Zenith Group**



For On-order: 29 Colors available. Single color 35 Pieces M O Q



These 29 Colors are available for **ON-ORDER**. MOQ **35**pc/Color.

Other than, if your pick our ready stock Colors mentioned above, MOQ is 30 (Mix size/colors).

**Zenith Group**

# SizeChart

## Oversized Hoodies

Size	Chest	Length	Shoulder
S	44	27	24
M	46	27.5	24.5
L	48	28	25
XL	50	28.5	25.5
XXL	52	29	26

Size in Inches

@Zenithgroup

*For Custom Size, Quantity must be maintained at least **35 piece** in single color , Size pattern Fee is also charged.*



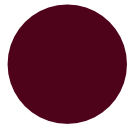
Premium\*

13

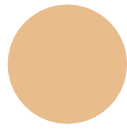
# Half-Zip Hoodie 420GSM

(Oversized Hoodie, heavy gauge, Zipper-collared)

Colors:



Marron



Beige

Sizes:

**S, M, L, XL, XXL**

Rs. 620



For On-order: 20 Colors available. Single color 25 Pieces MOQ

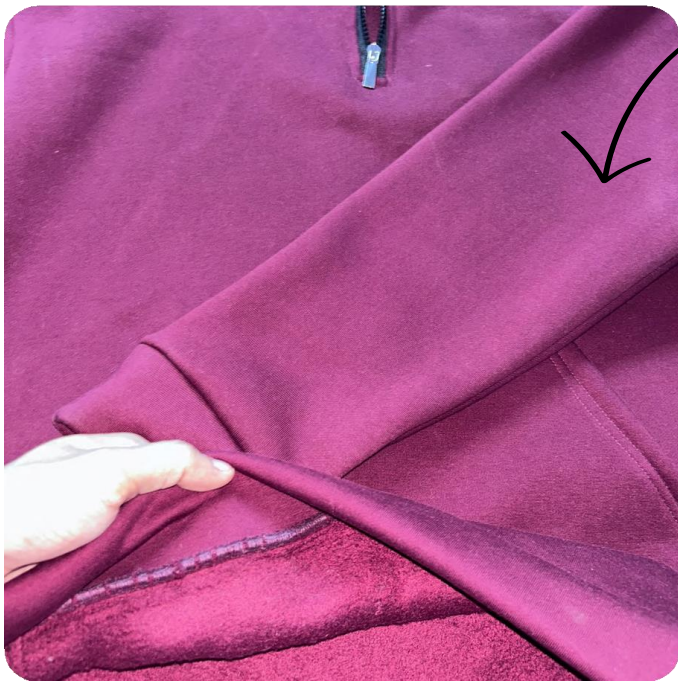


# Photoshop & Features:

## Oversized Perfect Hoodie

**Warmth:** The fleece lining provides good insulation, making it warm enough for cooler weather without being too heavy.

**Heavy gauge fabric** Makes it more durable, thicker for Winter.  
**Gold Finished Fabric**



Heavy GSM with fleece inside, makes it warmest

Fabric replaces rib. ( More baggy feel )



Kangaroo Pocket



Premium Imported Zip

**Zenith Group**



**For On-order: 20 Colors available. Single color 25 Pieces M O Q**



These 20 Colors are available for **ON-ORDER**. MOQ **25**pc/Color.

Other than, if your pick our ready stock Colors mentioned above, MOQ is 30 (Mix size/colors).

**Samples Charges 800 rs**

***Zenith Group***

# SizeChart

## Zipper Oversized Hoodie

Size	Chest	Length	Shoulder
S	42	27	24
M	44	27.5	24.5
L	46	28.5	25
XL	48	29.5	25.5
XXL	50	30	26

Size in Inches

@ZenithGroup

*For Custom Size, Quantity must be maintained at least **25 piece** in single color , Size pattern Fee is also charged.*



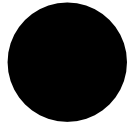
Premium\*

14

# 240GSM Regular Trouser

(Premium 240GSM, **TERRY LYCRA ULTRA SOFT**)

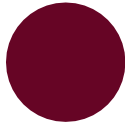
Colors:



Black



Lavender



Marron



Grey

Sizes:

**S, M, L, XL, XXL**

Rs. 460



For On-order: 20 Colors available. Single color 50 Pieces M O Q

**For On-order: 20 Colors available. Single color 50 Pieces M O Q**



These 23 Colors are available for **ON-ORDER**. MOQ **50**pc/Color.

Other than, if your pick our ready stock Colors mentioned above, MOQ is 30 (Mix size/colors).

**Samples Charges 600 rs**

***Zenith Group***



# Trouser

## Size Chart

Size	Waist Band	Full length
S	30	39.5
M	32	40
L	34	40.5
XL	36	50
XXL	38	50.5

Size in Inches

@Zenithgroup

*For Custom Size, Quantity must be maintained at least **25 piece** in single color , Size pattern Fee is also charged.*

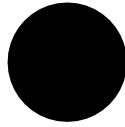
Premium\*

15

# 350GSM Heavy Sweatshirt

(350GSM, **Heavy Gauge Cotton Fleece**)

Colors:



Black



Charcoal  
Grey



Light Gray  
(Shaded)

Sizes:

**S, M, L, XL, XXL**

Rs. **470**



For On-order: 29 Colors available. Single color 40 Pieces M O Q



# Photoshop & Features:

## Regular Fitted

**Warmth:** The fleece lining provides good insulation, making it warm enough for cooler weather without being too heavy.

**Heavy gauge fabric** Makes it more durable, thicker for Winter.

**Gold Finished Fabric**



Perfect Fit

Soft Buttery Fabric



Double stitching



Broad Rib

**Zenith Group**

For On-order: 29 Colors available. Single color 40 Pieces M O Q



These 29 Colors are available for **ON-ORDER**. MOQ **40**pc/Color.

Other than, if your pick our ready stock Colors mentioned above, MOQ is 30 (Mix size/colors).

**Zenith Group**



## Does Cotton fleece doesn't contain Polyester blend?

Not at all. Our cotton fleece includes polyester blends, such as 30% in 280 GSM and 35% in 350 GSM. This doesn't mean it's cheap.

In fact, polyester blending enhances the fabric by making it stronger and more durable, improving dye retention, and reducing shrinkage.

When polyester content reaches 50-60%, it can lower the fabric's cost and durability as well. This higher polyester blend is what's typically referred to as true "PC fleece".

## Want more colors in hoodie ?

our MOQ is 30pcs. we offer 20-28 colors for our hoodies **On-order.**

Fortunately, you can choose from any of our 28 colors, as the MOQ for custom colors is also 30 pieces. So, you can select any color you prefer and still meet the order requirement.

*On-order\** : This means, if you need custom colors that we don't have in ready stock. We will make those colors specially for you on request.

**Note:** For On-order requests, you must need to maintain atleast a total Quantity of 150-200 Pieces.

For our ready-stock colors, we have just **30 piece M O Q** ( Mix articles/Size/color).





# ZENITH

**Your Custom  
Requirements are also  
welcomed**

*Zenith Group Inc.*

*Parent By: Viona Textiles*

**Contact: +91 7827666603,9266116054**

**Email: [sales@analexus.com](mailto:sales@analexus.com)**

***Zenith Group***