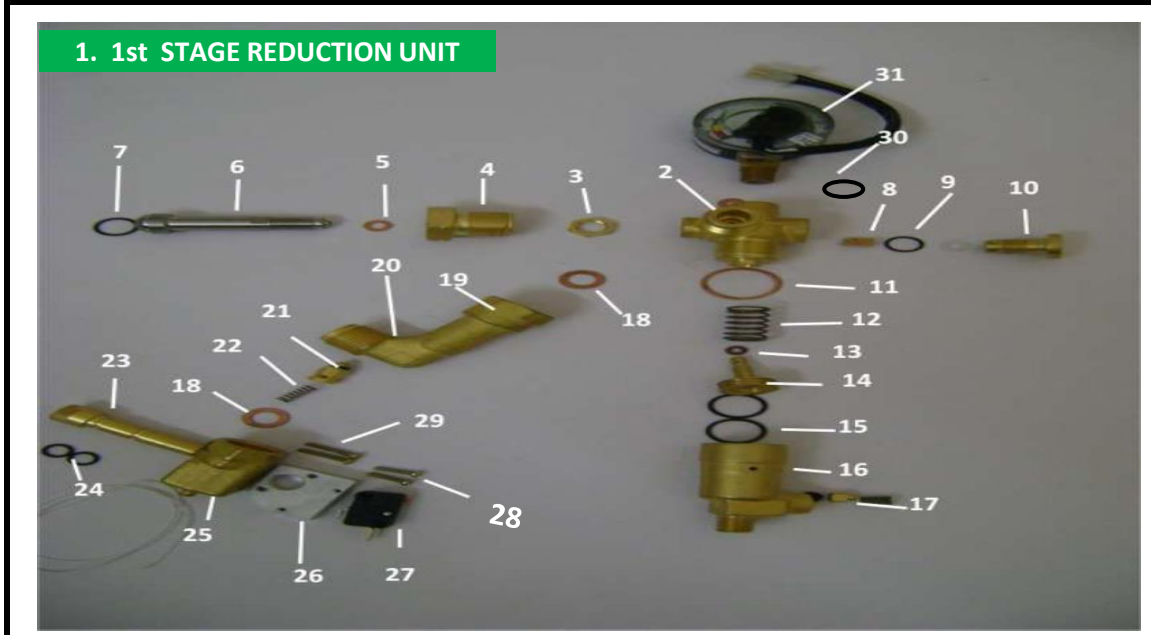
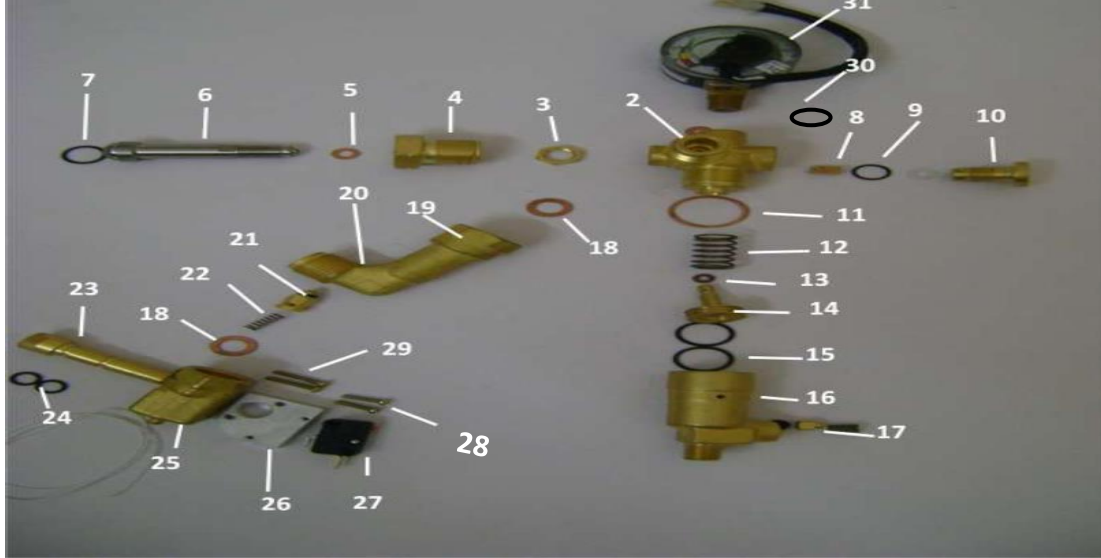


VANAZ CNG SPARE PART LIST



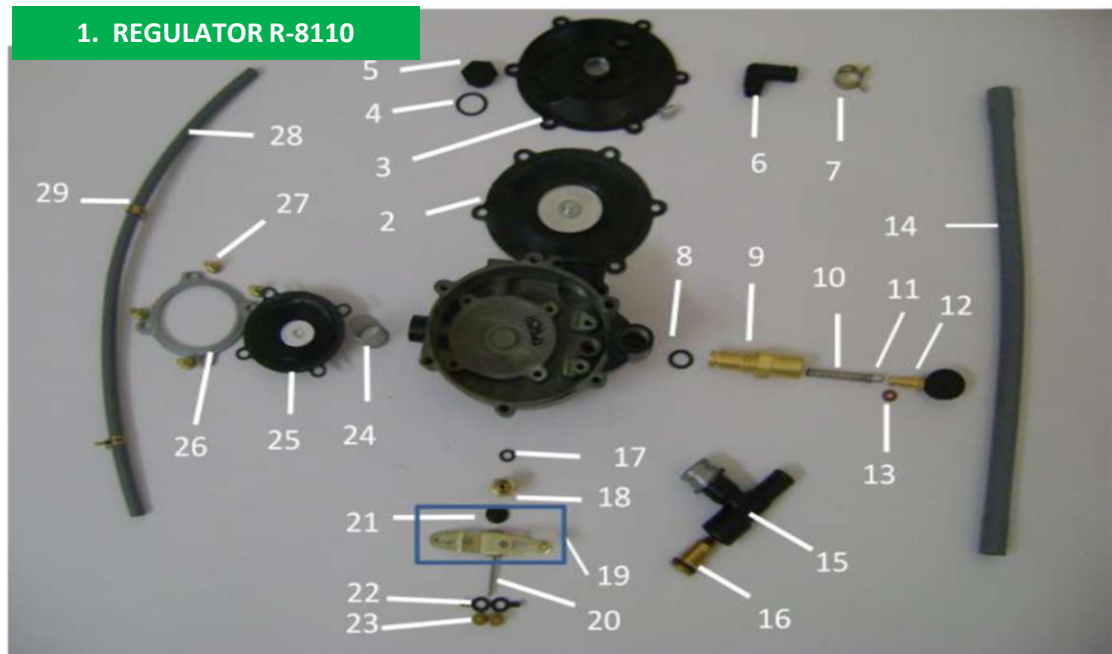
SR. NO.	EDP ITEM CODE	NAME OF THE ITEM AS PER DRG.	REMARK
1	K-0102-02-II	1st STAGE REDUCTION UNIT (BSII)	COMMON
1A	K-0102-02-III	1st STAGE REDUCTION UNIT (w/O Gauge)	COMMON
1B	K-0102-02-XV	2nd STAGE REDUCTION UNIT (w/O Gauge)	MAXIMA Z
1C	K-0102-02-VIII	1ST STAGE REDUCTION UNIT	TVS AUTO
1D	K-0102-02-IX	2nd STAGE REDUCTION UNIT	PIAGGIO
2	K-0102-02-150/155	JUNCTION BLOCK	COMMON
2A	K-0101-04-157	JUNCTION BLOCK	PIAGGIO/TVS
3	K-0101-04-220	LOCK NUT	COMMON
4	R-2101-120A	COUPLING SCREW L.H	COMMON
5	R-8101-280	WASHER	COMMON
6	K-0102-02-III-030	CONNECTOR	STEEL
6A	K-0101-04-120	CONNECTOR	BRASS
7	K-0101-04-140	O RING	COMMON
8	K-0102-02-380	FILTER	COMMON
9	K-0102-02-370	O RING	COMMON
10	K-0102-02-360/365	RETAINER	COMMON
11	K-0106-01-240	PACKING WASHER	COMMON
12	K-0101-04-180/240	SPRING	COMMON
13	K-0101-04-350	O RING	COMMON
14	K-0101-04-07	PISTON SUB ASSY.	COMMON
15	K-0101-04-200	O RING	COMMON
16	K-0101-04-06	CYLINDER SUB ASSY.	COMMON
	OUTLET ELBOW	K-0159-10-030	X CNG BAJAJ

1. 1st STAGE REDUCTION UNIT



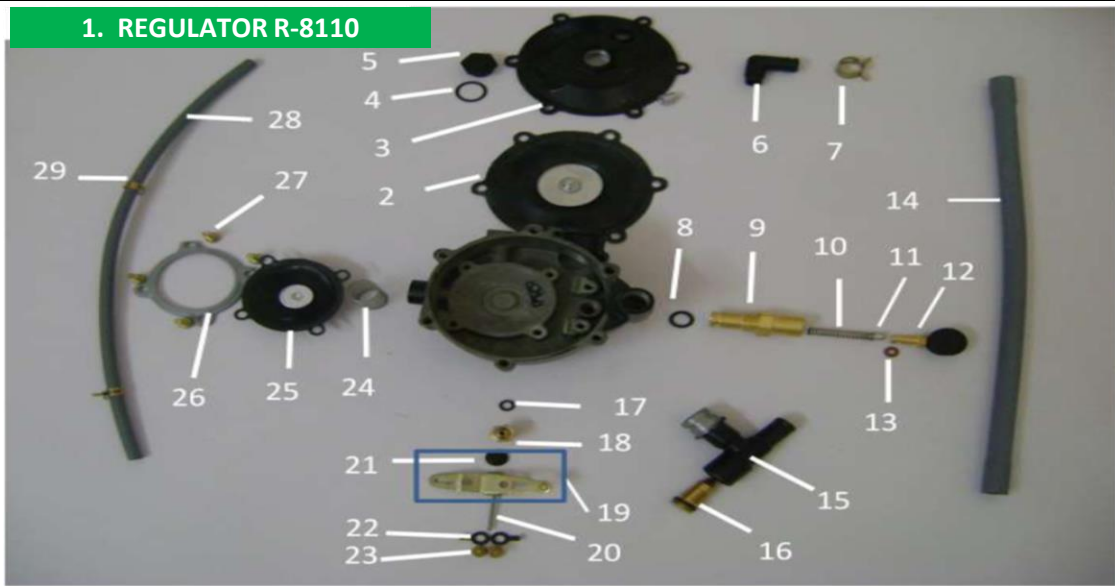
SR. NO.	EDP ITEM CODE	NAME OF THE ITEM AS PER DRG.	REMARK
17	R-8101-260	ADJUSTING SCREW	COMMON
	K-0101-04-05	PAD AND PAD HOLDER SUB ASSY.	
18	K-0101-04-050	SEALING WASHER	COMMON
19	K-0102-02-III-400	OUTLET ELBOW	COMMON
20	K-0101-04-060	O RING NRV	COMMON
21	K-0101-04-03	NRV SUB ASSY.	COMMON
22	K-0101-04-080	SPRING	COMMON
23	K-0101-04-040	DUST PLUG	COMMON
24	K-0101-04-020	O RING DUST PLUG	COMMON
25	K-0101-04-010	REFUELLING ADAPTER	COMMON
26	K-0101-04-290	MOUNTING PLATE	COMMON
27	K-0101-04-310	MICROSWITCH	COMMON
28	K-0101-04-320	PHILIPS HEAD SCREW M3X15L	COMMON
29	K-0101-04-300	PHILIPS HEAD SCREW M3X20L	COMMON
30	K-0101-04-100/110	WASHER	COMMON
31	I-0101-01	PRESSURE GAUGE	BAJAJ ALL OLD
31A	I-0101-01-VI	PRESSURE GAUGE (WATER PROFF)	BAJAJ COMMON
31B	I-0102-01	PRSEEURE GAUGE (BACK MOUNTING)	BAJAJ WIDER
31C	I-0102-01-IV	PRESSURE GAUGE (HORIZONTAL)	PIAGGIO
31D	I-0102-01-I	PRESSURE GAUGE (Horizontal)	TVS AUTO

1. REGULATOR R-8110



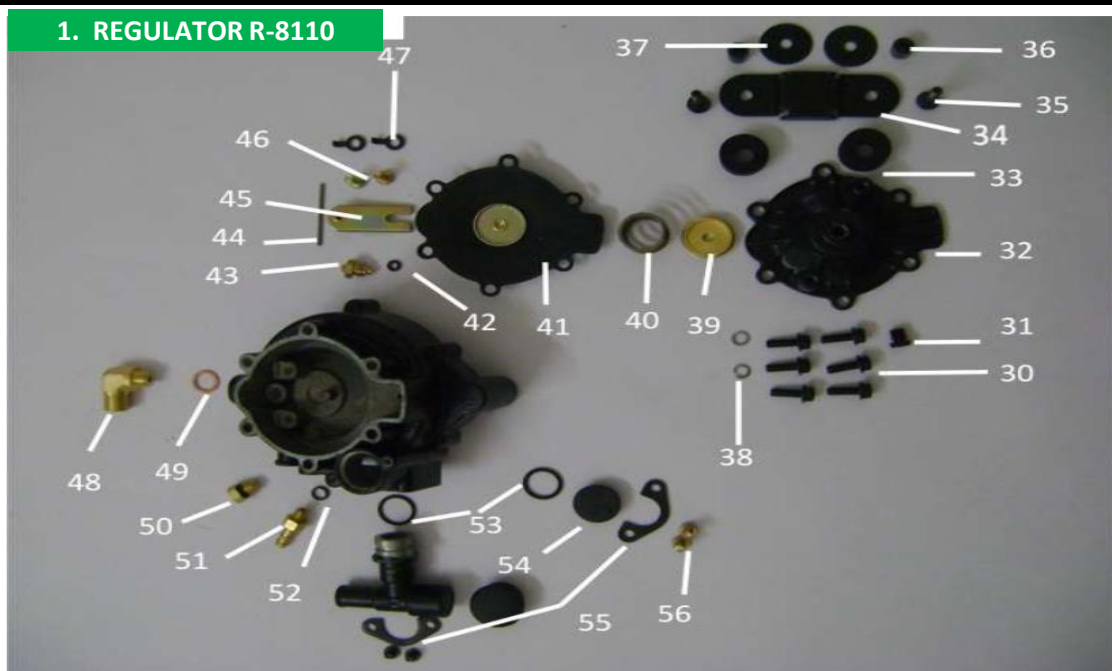
SR. NO.	EDP ITEM CODE	NAME OF THE ITEM AS PER DRG.	REMARK
1	R-8110-XX	REGULATOR 2 STAGE	4S COMP
1A	R-8110-XXV	REGULATOR 2 STAGE	4s BS IV
1B	R-8110-XXI	REGULATOR 2 STAGE	2S BSIV
1C	R-8110-XXX	REGULATOR 2 STAGE	MAXIMA Z
1D	R-8110-XXXII	CNG REGULATOR FOR MAX.	WIDER BODY
1E	R-8110-XXVII	TWO STAGE CNG REGULATOR	TVS CNG BSIV
1F	R-8110-XVI	REGULATOR 2 STAGE	PIAGGIO CNG BSIV
2	R-8106-VI-01	DIAPHRAGM SUB. ASSLY	COMMON
2A	R-8106-XIII-12	DIAPHRAGM SUB. ASSLY	TVS BSIV OLD
2B	R-8106-XIII-15	DIAPHRAGM SUB. ASSLY	TVS BS IV
4	R-8106-780	O' RING	COMMON
5	R-8106-VI-080	PLUG	COMMON
6	R-8106-VI-450	BREATHER II SECOND STAGE	COMMON
6A	R-8106-VI-480	RESTRICTOR	4S / X COMP.
6B	R-8106-VII-430	RESTRICTOR	2 STR COMPACT
7	K-0421-13-020	CLIP BREATHER HOSE	COMMON
8	R-8104-240	O' RING	COMMON
9	R-8106-VI-140	BODY (IDLE BODY)	BAJAJ ALL CNG
10	R-8106-160	IDLING SPRING	PIAGGIO/TVS
10A	R-8106-XII-150	IDLING SPRING	COMP. ALL
11	R-8106-VI-500	GUIDE SPRING (IDLE)	COMMON
12	R-8106-VI-130	IDLE SCREW	COMMON

1. REGULATOR R-8110



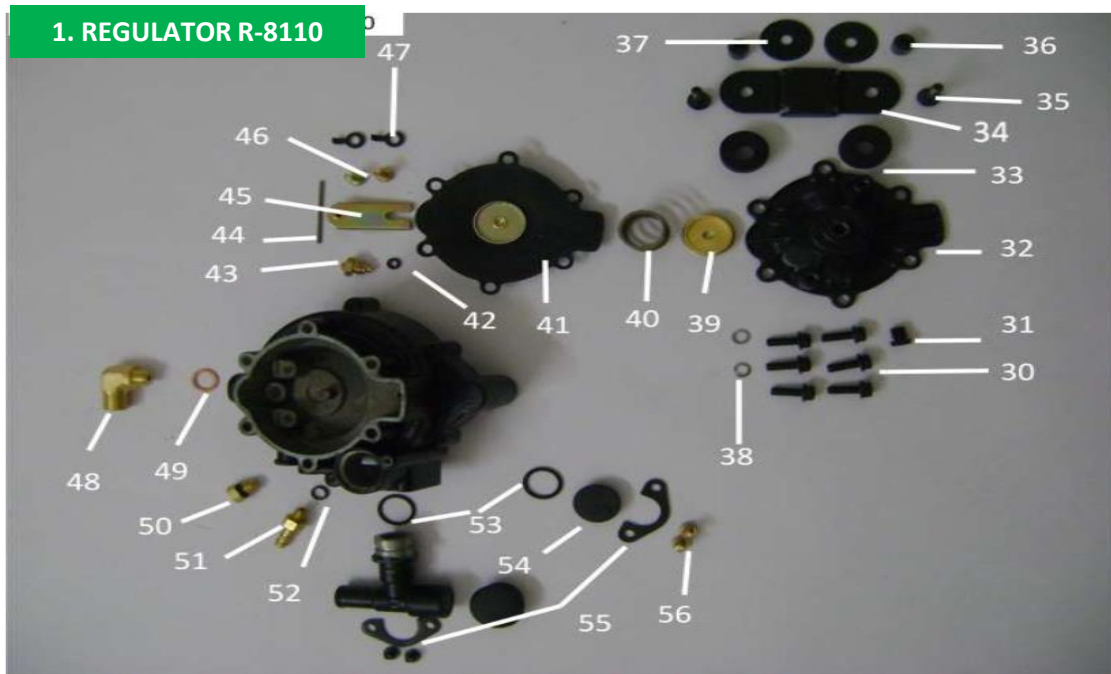
SR. NO.	EDP ITEM CODE	NAME OF THE ITEM AS PER DRG.	REMARK
13	K-0101-04-350	O' RING (IDLE SCREW)	BAJAJ/PIAGGIO
14	R-8106-VII-380	HOSE BREATHER	4 STROKE BAJAJ
14A	R-8110-XIX-360	HOSE BREATHER	2 S / MAXIMA
15	R-8110-III-352	FLOW CONTROL BODY CNG	BAJAJ ALL CNG
15A	R-8106-VI-462	FLOW CONTROL BODY	TVS CNG ALL
15B	R-8106-VI-462	FLOW CONTROL BODY CNG	PIAGGIO CNG ALL
16	R-8110-III-320	FLOW ADJUSTING SCREW BAL 2S / 4S	COMMON
16A	R-8110-III-322	FLOW ADJUSTING SCREW BAL 2S / 4S	BAJAJ BS IV
16B	R-8106-VI-395	FLOW ADJUSTING SCREW	TVS AUTO
16-A-1	K-0102-02-371	O' RING FLOW ADJUSTING SCREW	COMMON
16-B-1	K-0102-02-370	O' RING FLOW CONTROL SCREW	TVS AUTO
17	R-8106-210	WASHER SEAT	COMMON
18	R-8110-V-060	SEAT	4S COMP.
18A	R-8106-VI-120	SEAT SECOND STAGE	COMMON
18B	R-8106-XI-070	SEAT	X OPT./ RE MAX
19	R-8106-VI-02	LEVER SUB. ASSLY	BAJAJ / PIAGGIO
19A	R-8106-685	LEVER SUB. ASSLY	TVS AUTO
20	R-8106-110	LEVER PIN	COMMON
21	R-8101-180	PAD	COMMON
22	R-8106-VI-040	WASHER FOR CHESE HEAD SCREW	COMMON
23/27	R-8101-290	CHEESE HEAD SCREW	COMMON
24	R-8106-360	SPRING VACUUM	TVS AUTO
25	R-8106-09	VACCUM DIAPH. SUB. ASSLY	TVS AUTO
26	R-8106-180	CLAMPING RING	TVS AUTO
28	R-8110-XIX-460	HOSE VACCUM	TVS AUTO
29	K-0418-14-020	CLIP VACUUM	TVS AUTO

1. REGULATOR R-8110



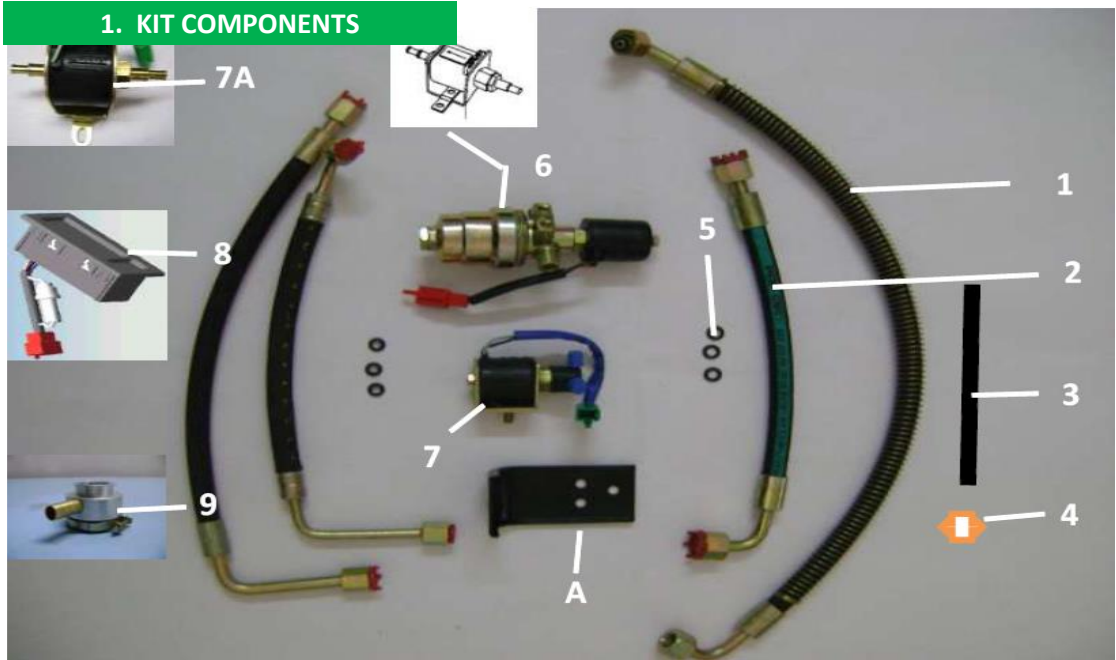
SR. NO.	EDP ITEM CODE	NAME OF THE ITEM AS PER DRG.	REMARK
30	R-8106-VI-100	FLANGE SCREW BONNET	COMMON
31	R-8106-VI-240	BREATHER (PRIMARY)	COMMON
32	R-8106-VI-190	BONNET BLACK POWDER COATED	COMMON
32A	R-8110-230	BONNET M.J.GREY POWDER COATED	TVS AUTO/PVPL
33	K-0812-12-040	DAMPER	COMMON
34	K-0426-01-070	GUARD	COMMON
35	K-0812-12-060	FLANGE SCREW	COMMON
36	K-0812-12-030	BUSH	COMMON
37	K-0812-12-050	MOUNTING WASHER	COMMON
38	R-8101-030	SPRING WASHER	COMMON
39	R-8101-710	SPRING ADJUSTING SCREW	COMMON
40	R-8110-IV-240	SPRING	COMMON
41	R-8106-VI-04	DIAPHRAGM SUB. ASSLY	COMMON
42	R-8106-330	WASHER FOR SEAT	COMMON
43	R-8106-320	SEAT	COMMON
44	R-8106-110	LEVER PIN	COMMON
45	R-8106-04	LEVER SUB. ASSLY	COMMON
46	R-8101-290	CHEESE HEAD SCREW	COMMON
47	R-8106-VI-040	WASHER FOR PIN SCREW	COMMON

1. REGULATOR R-8110



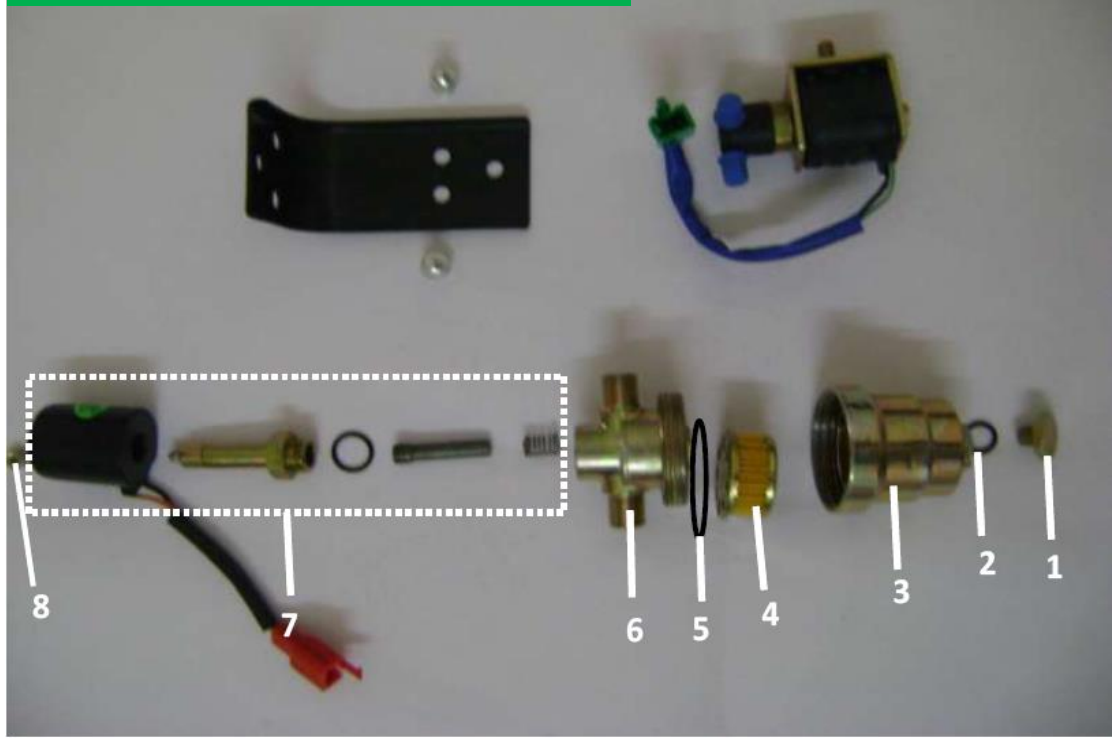
SR. NO.	EDP ITEM CODE	NAME OF THE ITEM AS PER DRG.	REMARK
48	R-8110-III-260	INLET CONNECTOR	COMMON
48A	R-8106-720	INLET CONNECTOR	TVS KING
49	R-8106-340	COPPER WASHER INLET CONNECTR	COMMON
50	R-8106-VII-310	PLUG	COMMON
50-1	R-8101-760	O' RING	NEW
51	R-8110-XIX-430	NOZZLE VACUUM	TVS /OLD BAJAJ
52	R-8106-470	WASHER VACUUM NOZZLE	TVS /OLD BAJAJ
53	R-8106-420	O' RING FOR PLUG	COMMON
54	R-8106-655	PLUG	COMMON
55	R-8106-VI-490	CLAMP	COMMON
56	R-8106-VI-280	CHEESE HEAD SCREW	COMMON

1. KIT COMPONENTS



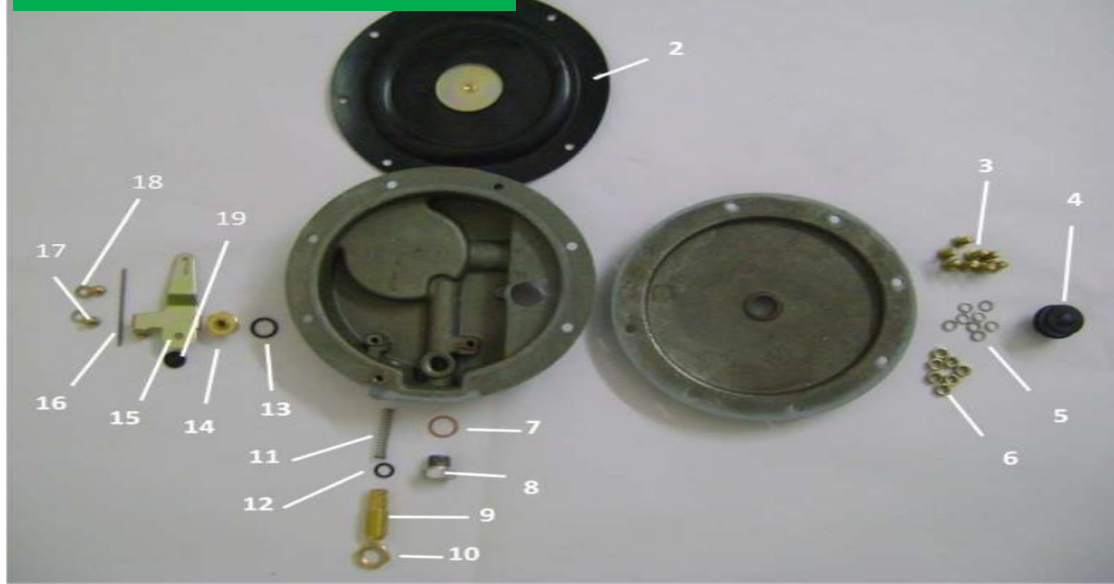
SR. NO.	EDP ITEM CODE	NAME OF THE ITEM AS PER DRG.	REMARK
1	K-0155-01	HOSE HPR TO SOLENOID	COMMON BAJAJ 2/4
1A	K-0185-I-05	FLEX. HOSE ASSY HPR TO FSV (1530 MM)	TVS AUTO 33 Lit. Tank
1B	K-0445-05	FLEX. HOSE ASSY HPR TO FSV (2020 MM)	TVS AUTO 30 Lit. Tank
1C	K-1501-04	HOSE HPR TO SOLENOID	MAXIMA Z BAJAJ
1D	K-0180-05	HOSE HPR TO SOLENOID	PIAGGIO CITY 200CC
2	K-0155-03	HOSE SOLENOID TO LPR	BAJAJ BS III ALL
2A	K-0159-02	ASSY. FSV AND LPR	MAXIMA Z
2B	K-1506-V-03	ASSY. FSV AND LPR	WIDER BODY
2C	K-0180-06	HOSE SOLENOID TO LPR	PIAGGIO CITY 200CC
2D	K-0185-06	HOSE ASSEMBLY FSV TO LPR	TVS AUTO
3	K-0181-050	LOW PRESSURE HOSE PIPE	BAJAJ 4 STROKE
3A	K-0160-050	LOW PRESSURE HOSE PIPE	BAJAJ 2 STROKE
3B	K-01506-V-02-010	LOW PRESSURE HOSE PIPE	MAXIMA Z
3C	K-0180-080	LOW PRESSURE HOSE ASSY.	PIAGGIO CITY 200CC
3D	K-0153-06	LOW PRESSURE HOSE ASSY.	TVS BS III
3E	K-0185-07-010	LOW PRESSURE HOSE ASSY.	TVS BS IV
4	K-0130-09-060	HOSE CLIP FOR ALL MODELS	COMMON
5	K-0101-05-020	FLEX. HOSE WASHER	COMMON
6	K-0102-19- III	FILTER GAS SOL. VALVE (Alluminium)	COMMON
7	K-0803-06-I	PETROL SOL. VALVE	COMMON BSIII
7A	K-0803-06-III	PETROL SOL. VALVE	COMMON BS IV

FILTER SOLENIOD VALVE K-0102-19-II



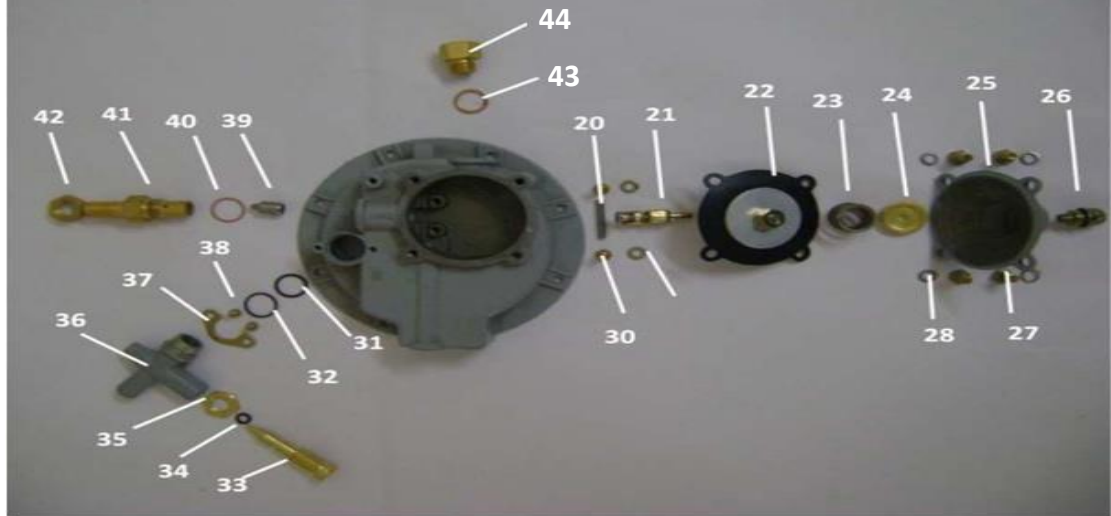
SR. NO.	EDP ITEM CODE	NAME OF THE ITEM AS PER DRG.	REMARK
1	K-0102-19-010	DRAIN PLUG	COMMON
2	K-0102-19-020	O' RING	COMMON
3	K-0102-19-030	BOWL SS	COMMON
3A	K-0102-19- III-030	BOWL ALLUMINIUM	COMMON
4	K-0102-19-040	PAPER FILTER	COMMON
5	K-0102-19-050	O' RING	COMMON
5A	K-0102-19-070	O' RING SPACER	COMMON
**	K-0102-19-080	BOLT	COMMON
6	K-0102-19-090	BODY SS	COMMON
6A	K-0102-19-III-090	BODY ALUMINIUM	COMMON
**	K-0102-19-100	O' RING	COMMON
7	K-0102-19-120	COIL ASSY. OLD	COMMON
7A	K-0102-19-III-120	COIL ASSY. NEW	COMMON
**	K-0102-19-110	PLUNGER ASSY.	COMMON
8	K-0102-19-130	LOCK NUT	COMMON
	S-0101-02	PLUNGER AND SPRING SUB. ASSY.	COMMON

1. 2 STAGE REGULATOR R-8101



SR. NO.	EDP ITEM CODE	NAME OF THE ITEM AS PER DRG.	REMARK
1A	R-8101-III	REGULATOR 2 STAGE	BAL 4S BSII
1B	R-8101-IV	REGULATOR 2 STAGE	BAL 2S BSII
2	R-8101-02	DIA. SUB ASSEMBLY (BIG)	COMMON
3	R-8101-040	HEX. SCREW	COMMON
4	R-8101-11/12	BREATHER ASSEMBLY 1 FOR 2nd STAGE	COMMON
5	R-8101-030	SPRING WASHER	COMMON
6	R-8101-120	NUT M5	COMMON
7	R-8101-220	WASHER	COMMON
8	R-8101-210	PLUG	COMMON
9	R-8101-670	SPRING RETAINER	COMMON
10	R-8101-660	LOCK NUT	COMMON
11	R-8101-480	SPRING	COMMON
12	R-8101-470	O' RING	COMMON
13	R-8101-200	WASHER	COMMON
14	R-8101-V-150	SEAT	COMMON
15	R-8101-03	LEVER SUB ASSEMBLY	COMMON
16	R-8101-160	LEVER PIN	COMMON
17	R-8101-290	CHEESE HEAD SCREW	COMMON
18	R-8101-130	WASHER	COMMON
19	R-8101-180	PAD	COMMON

1. 2 STAGE REGULATOR R-8101



SR. NO.	EDP ITEM CODE	NAME OF THE ITEM AS PER DRG.	REMARK
20	R-8101-410	LEVER PIN	COMMON
21	R-8101-400	LEVER SUB. ASSY.	COMMON
22	R-8101-04	DIAPHRAGM SUB ASSEMBLY (SMALL)	COMMON
22.1	R-8101-311	DIAPHRAGAM	COMMON
23	R-2701-250	SPRING	COMMON
24	R-8101-710	SPRING ADJUSTING SCREW	COMMON
26	R-8101-12	BREATHER	COMMON
27	R-8101-570	HEX. SCREW	COMMON
28	K-0101-08-030	SPRING WASHER	COMMON
29	R-8101-130	WASHER	COMMON
30	R-8101-290	CHEESE HEAD SCREW	COMMON
31	R-8101-520	O' RING	COMMON
32	R-8101-420	O' RING	COMMON
33	R-8101-545	FLOW ADJ. SCREW	COMMON
34	R-8101-760	O' RING	COMMON
35	R-8101-740	LOCK NUT	NEW BSIII
36	R-8101-499	FLOW CONTROL BODY	RF / 2S/ 4S BSII
37	R-8106-870	Clamp	COMMON
38	R-8101-530	CHEESE HEAD SCREW	COMMON
39	R-8101-06	PAD HOLDER SUB ASSEMBLY	COMMON
40	R-8101-440	WASHER	COMMON
41	R-8101-450	INLET CONNECTOR	COMMON
42	R-8101-630	LOCK NUT	COMMON
43	R-8101-280/281	WASHER	COMMON
44	R-8101-01	S.R.V SUB ASSY.	COMMON