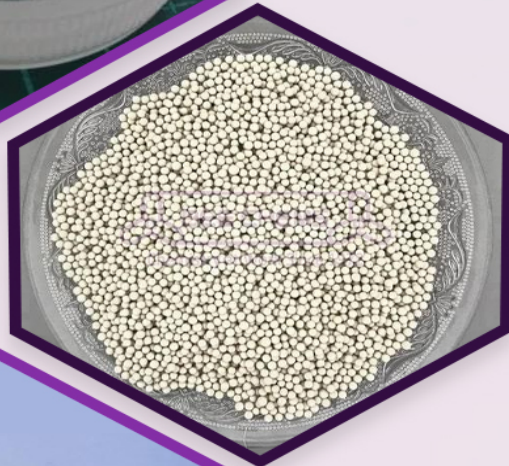
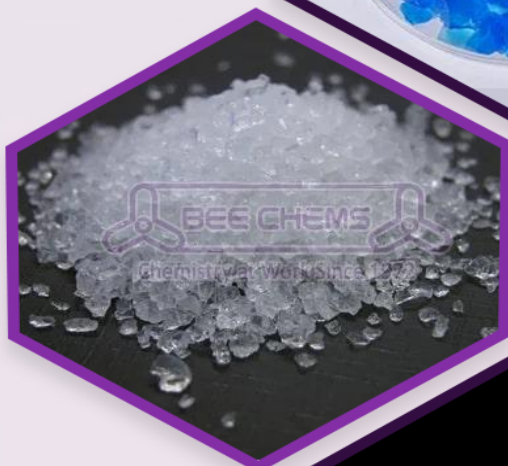
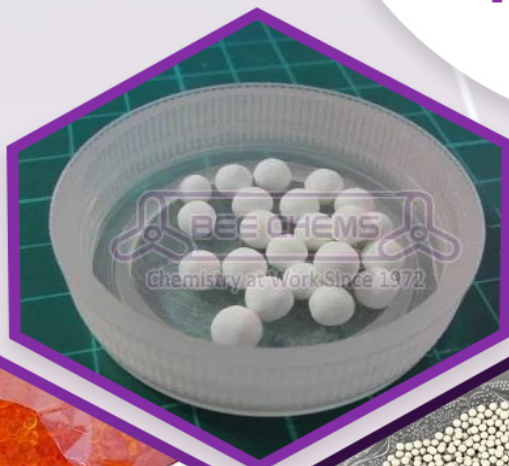




Chemistry at Work Since 1972

Year of
Establishment

1972



**Manufacturer,
Exporter & Supplier**

Our Products

- ◆ Silica Gel
- ◆ Soda Lime
- ◆ Molecular Sieves
- ◆ Activated Alumina Balls
- ◆ Ethylene Absorber Pouch
- ◆ Concrete Densifier



+91-7017801212, 08048781559

share@beechems.com

Since its inception in 1972, Bee Chem has been a pioneering force in the realm of chemical solutions. Founded by Mr. Somendra Bhalla, our journey began with a commitment to excellence and innovation. Based in Kanpur, Uttar Pradesh, we have expanded our reach globally as a distinguished Manufacturer, Exporter, and Supplier of a diverse range of high-quality products.

At Bee Chem, we adhere to stringent quality standards, ensuring that every product leaving our facilities meets the highest benchmarks of excellence. Our extensive portfolio includes Silica Gel, Soda Lime, Molecular Sieves, Activated Alumina Balls, Ethylene Absorber Pouches, and Concrete Densifiers, among others. Each product is meticulously crafted, utilizing advanced manufacturing techniques and premium-grade materials to guarantee exceptional performance and reliability.

Our dedication to quality is complemented by an unwavering commitment to customer satisfaction. We prioritize the needs and preferences of our clients, striving to surpass their expectations at every turn. Whether it's providing customized solutions, ensuring prompt delivery, or offering unparalleled customer support, we go above and beyond to foster enduring relationships built on trust and mutual respect.

At the heart of our operations lies a robust quality policy that underscores our relentless pursuit of excellence. We are committed to continuous improvement, regularly refining our processes and methodologies to deliver superior products and services. Our quality management system is designed to uphold the highest standards of integrity, transparency, and accountability, reflecting our steadfast commitment to excellence in everything we do.

Name of Founder
Mr. Somendra Bhalla

Year of Establishment
1972

Nature of Business
Manufacturer, Exporter & Supplier

Number of Employees
Upto 10 People

Market Covered
Worldwide

Annual Turnover
Rs. 20-25 Cr

GST No
09AADHS9047N1ZD

Legal Status of Firm
HUF Firm (Hindu Undivided Family)

Our Establishment

Since its inception in 1972, Bee Chem has been a pioneering force in the realm of chemical solutions. Founded by Mr. Somendra Bhalla, our journey bega...

Our Quality

Our dedication to quality is complemented by an unwavering commitment to customer satisfaction. We prioritize the needs and preferences of our clients...

Why Us?

At the heart of our operations lies a robust quality policy that underscores our relentless pursuit of excellence. We are committed to continuous impr...



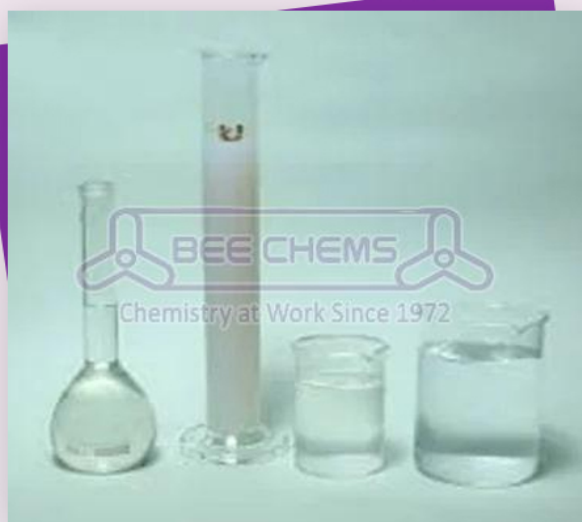
Blue Silica Gel



Chemical Grade Silica Gel



Colloidal Silica Gel



Nano Silica Gel



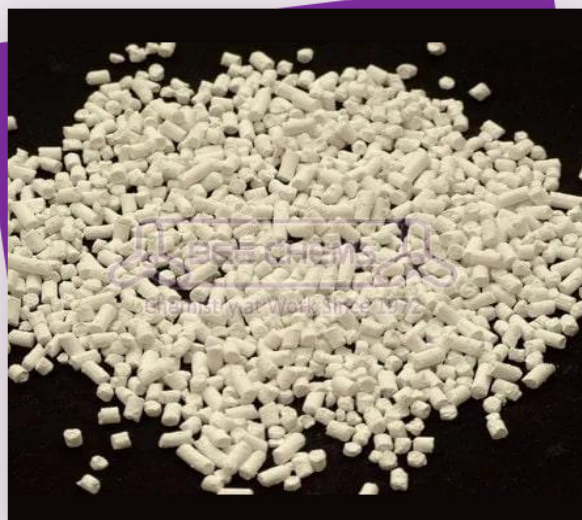
Orange Silica Gel



White Silica Gel



Soda Lime Grits



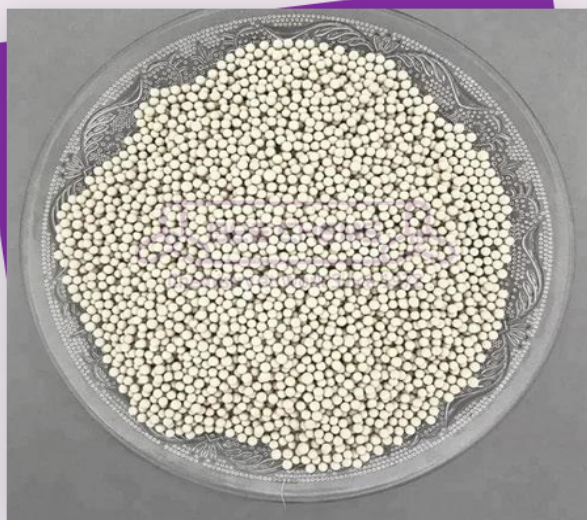
Soda Lime Granules



Soda Lime Absorbents



4A Molecular Sieves



Zeolite Molecular Sieves



Catalyst Activated Alumina Balls



Round Activated Alumina Balls



White Activated Alumina Balls



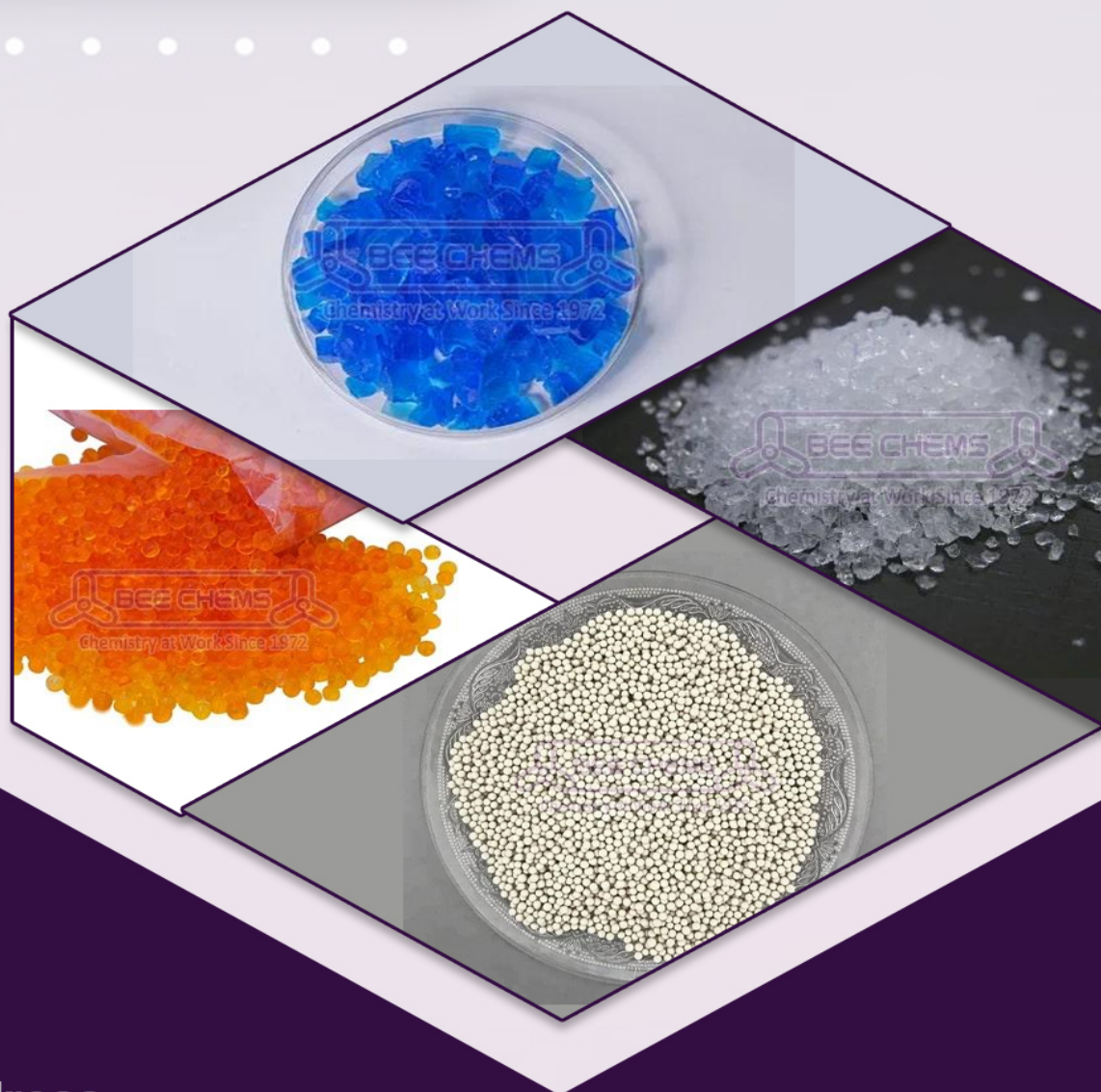
Ethylene Absorber Pouch



Concrete Densifier



Chemistry at Work Since 1972



Address

E - 5 Panki Industrial Area Bee Chems Site - 1,
Kanpur, Uttar Pradesh, India - 208022

Call Us

+91-7017801212, 08048781559

Email

share@beechems.com

Web Address

www.beechemsglobal.in

Web Page

www.exportersindia.com/bee-chem
www.indianyellowpages.com/kanpur/bee-chem-13273365

