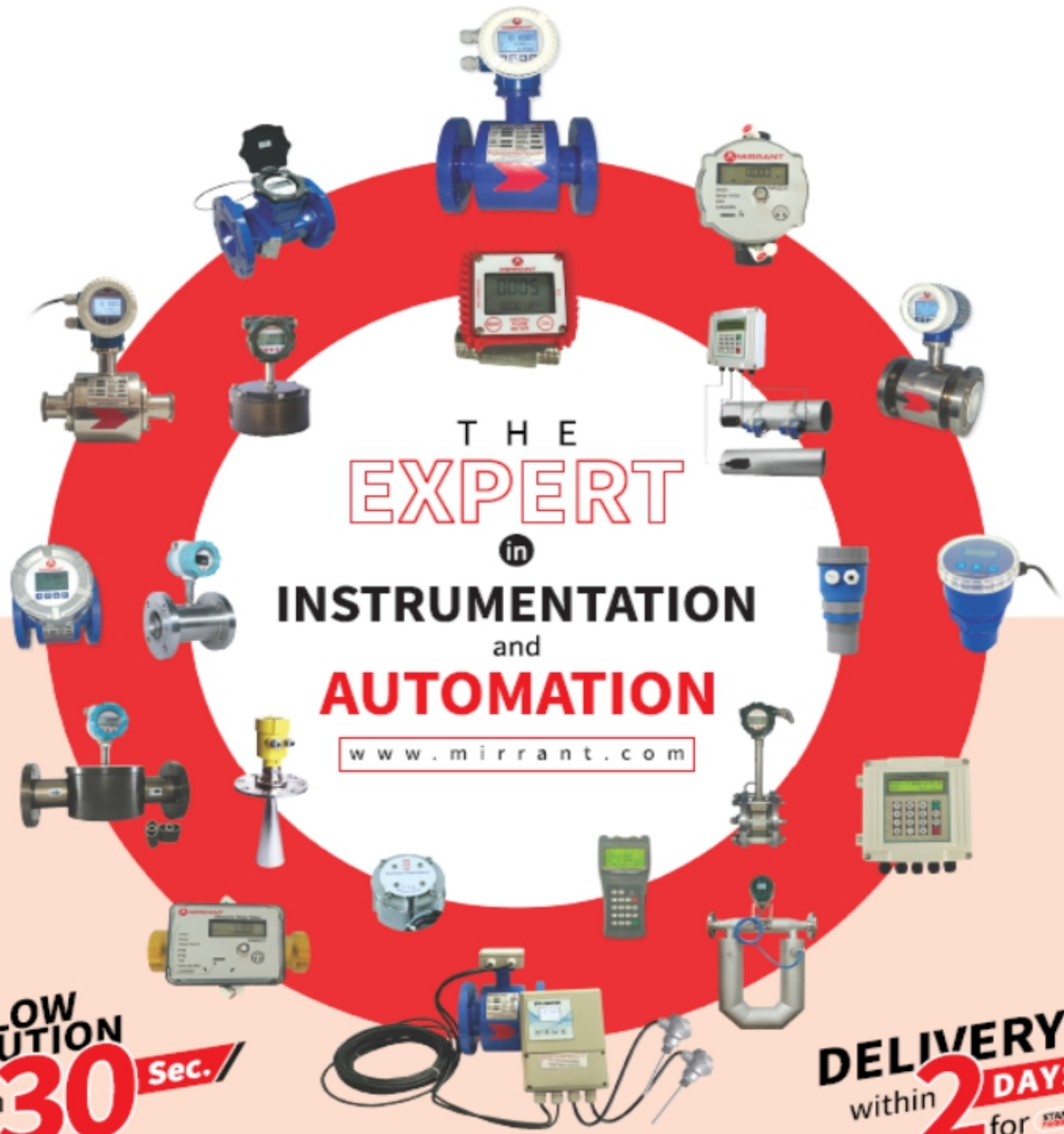




# MIRRANT AUTOMATION PVT. LTD.

MIRRANT AUTOMATION PVT. LTD.



THE  
**EXPERT**



**INSTRUMENTATION  
and  
AUTOMATION**

[www.mirrant.com](http://www.mirrant.com)

**FLOW  
SOLUTION**  
within **30** Sec. //

**DELIVERY**  
within **2** DAYS //  
for STANDARD PRODUCTS

# About Us

Mirrant Automation is an emerging Industrial Automation and Control Solutions company located at Hyderabad, as one of the leading manufacturer of Process Control Instruments since 2015. We are an ISO 9001:2015 certified organization and manufacture a wide range of instruments such as Electromagnetic, Ultrasonic Flow meters & meters, Ultrasonic Water Meters, BTU Meters, Oval-Gear Flow Turbine Flow meters, Vortex (Steam) Flow meters, Pressure, Level, Temperature instruments and Automation Products, PLC,HMI,SCADA,VFD covering the majority of Utility and Industry applications. We manufacture products comparable to the best brands available in the market with over 500+ satisfied customers across the globe. We also specialized in Calibration Services and We Have NABL in-house calibration laboratory.



# ELECTROMAGNETIC FLOW METER



|                                       |   |   |
|---------------------------------------|---|---|
| Diameter                              | : | DN10~DN2000mm   |
| Accuracy                              | : | ±0.5%   |
| Repeatability                         | : | ±0.2% of Span   |
| Medium temperature                    | : | < 180°C   |
| Medium pressure (Kg/Cm <sup>2</sup> ) | : | 10,16,25,40   |
| Flow rate                             | : | 0.3~10m/s   |
| Electrode Material                    | : | SS316 Std.,Hastalloy C, Titanium, Tantalum,Platinum,etc   |
| Lining Material                       | : | PTFE, Rubber, Neoprene, PFA, HDPE, Polyurethane, CPVC etc |
| Flow Tube Material                    | : | SS304 Std,SS316   |
| Coil House Material                   | : | Carbon steel,Stainless steel                              |
| Power supply                          | : | 230VAC,24VDC,Battery                                      |
| Signal output                         | : | 4~20mA,Pulse and Relay                                    |
| Communication Interface               | : | RS485,GSM/GPRS,HART,LORA                                  |
| Display                               | : | LCD Display In Engg.Units                                 |
| Protection proof                      | : | IP65;IP67,IP68  |
| Flow Transmitter                      | : | Integral, Remote  |
| Enclosure Material                    | : | Die Cast Aluminium  |
| Electrical Connection                 | : | 1/2" NPT  |
| Work environment                      | : | Ambient temperature: -20~+60H, Ambient humidity5%~90%     |
| End Connection                        | : | Flange-end,Wafer,Tri-Clover etc.                          |

# ULTRASONIC WATER METER

|                            |   |   |
|----------------------------|---|---|
| Temperature                | : | Medium Range: 0.1°C.....30/50°C (T30/T50) Ambient temperature: 5~55 °C Storage temperature: -20~60 °C |
| Temperature Sensor         | : | A pair of PT1000 platinum resistor  |
| Metrological Class         | : | Class 2, R=160/250/400:1  |
| Maximum Operation Pressure | : | 1.6 Mpa   |
| Pressure Loss              | : | Δ P40   |
| Pressure Stage             | : | PN16  |
| Protection Class           | : | IP65/IP68   |
| Battery                    | : | 3.6VDC lithium battery, 6-10-16 years lifetime option.  |
| Data Storage               | : | 24 months history data  |
| ENVIRONMENTAL REQUIREMENT  | : | Environmental Class: E1, M1, B  |



## ULTRASONIC FLOW METER



|                               |   |   |
|-------------------------------|---|---|
| Diameter                      | : | DN15~DN6000mm   |
| Accuracy                      | : | ±1%   |
| Repeatability                 | : | ±0.2% of Span   |
| Medium temperature            | : | < 60°C  |
| Flow rate                     | : | 0.3~32m/s   |
| Pipe Material                 | : | steel, cast iron, Ductile iron, Brass, copper, PVC, Aluminium |
| Displays                      | : | 4x16 English letters  |
| Electronic Enclosure Material | : | Plastic, Aluminium  |
| Power supply                  | : | 230VAC/110VAC/24VDC/Battery                                   |
| Signal output                 | : | 4~20mA, Pulse   |
| Communication                 | : | RS-232C, RS485, M-BUS, RF, GSM/GPRS, LORA/NB-IOT              |
| Data Logger                   | : | Options : SD card data ( up to 8GB based SD card capacity)    |
| Protection proof              | : | IP65; IP67, IP68  |
| Explosion-proof               | : | Flame Proof (FLP)   |
| Structure                     | : | Integral, Remote  |
| Liquid temperature            | : | -40 to 121 Deg.C. (Optional 40 to 250 Deg.C.)                 |
| Work environment              | : | Ambient temperature: -20~+60H                                 |

## VORTEX FLOW METER

|                        |   |  |
|------------------------|---|--|
| Size                   | : | DN25~DN300mm   |
| Accuracy               | : | ±0.5%  |
| Repeatability          | : | ±0.1% of Span  |
| Medium temperature     | : | -40°C to 350°C   |
| Medium pressure        | : | up to 60 Bar   |
| Body Material          | : | SS304, SS316   |
| Compensation           | : | Pressure & Temperature Compensation                      |
| Enclosure Material     | : | Aluminium  |
| Power supply           | : | 24VDC, lithium battery                                   |
| Signal output          | : | 4~20mA, Pulse-NPN and Relay                              |
| Communication Protocol | : | RS485, GSM/GPRS, HART, LORA/NB-IOT                       |
| Display                | : | LCD Display, Flow rate, Totalizer, Pressure Temperature  |
| Explosion-proof        | : | Flame Proof (FLP)  |
| Protection proof       | : | IP65, IP67 & IP68  |
| Flow Transmitter       | : | Integral, Remote   |
| Work environment       | : | Ambient temperature: -20~+60°C, Ambient humidity: 5%~85% |
| End Connection         | : | Flange-end and Wafer Connection                          |



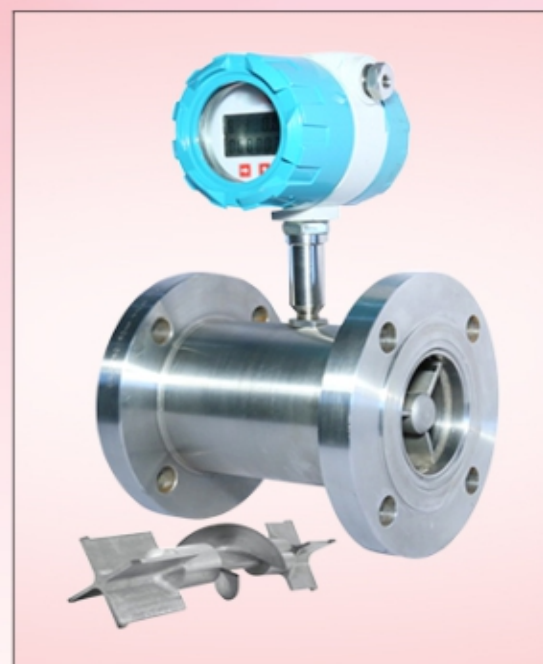
## OVAL-GEAR FLOW METER



|                          |   |   |
|--------------------------|---|---|
| Diameter                 | : | DN3~DN200mm   |
| Accuracy                 | : | ±0.5%   |
| Repeatability            | : | ±0.1% of Span   |
| Medium temperature       | : | up to 80°C  |
| Medium pressure (Kg/Cm2) | : | up to 50 Bar  |
| Body                     | : | Aluminium,SS304,SS316   |
| Rotor                    | : | Aluminium,SS316,PPS   |
| O-ring                   | : | NBR,Viton   |
| Shaft                    | : | SS316   |
| Electronic Enclosure     | : | Aluminium,Plastic   |
| Power supply             | : | 5-24VDC,Battery   |
| Signal output            | : | 4~20mA,Pulse-NPN and Relay                                    |
| Communication            | : | RS485,GSM/GPRS & LORA/NB-IOT                                  |
| Display                  | : | LCD Display In Engg.Units                                     |
| Explosion-proof          | : | FLP   |
| Protection proof         | : | IP65,IP67& IP68   |
| Flow Transmitter         | : | Integral, Remote  |
| Work environment         | : | Ambient temperature: -20~ +60<br>'C, Ambient humidity: 5%~85% |
| End Connection           | : | Thread-end,Flange-end and Tri-clover                          |

## TURBINE FLOW METER

|                         |   |   |
|-------------------------|---|---|
| Size                    | : | DN4~DN250mm   |
| Accuracy& Repeatability | : | ±0.5% & ±0.1% of Span   |
| Medium temperature      | : | -20 to 120 Deg.C  |
| Medium pressure         | : | up to 60 Bar  |
| Body Material (Kg/Cm2)  | : | SS304,SS316,Plastic   |
| Rotor Material          | : | SS304,SS316,Plastic   |
| Shaft Material          | : | SS316,SS410,Plastic   |
| Electronic Enclosure    | : | Aluminium,MS,Plastic  |
| Power supply            | : | 24V DC,230VAC,Battery Power   |
| Signal output           | : | 4~20mA,Pulse Output   |
| Communication           | : | RS485,GSM/GPRS,LORA/NB-IOT  |
| Display                 | : | Display1:Battery Powered, Local Display<br>Display2:Battery Powered, Local Display and Pulse Output<br>Display3:External 24VDC Powered, Local Display and Pulse Output<br>External 24VDC Powered. |
| Explosion-proof         | : | FLP-Flame Proof   |
| Protection proof        | : | IP65,IP67,IP68  |
| Flow Transmitter        | : | Integral,Remote   |
| Work environment        | : | Ambient temperature: -20~<br>+60'C, Ambient humidity: 5%~<br>85%  |



## BTU METER



|                                       |   |   |
|---------------------------------------|---|---|
| Diameter                              | : | DN15~DN6000mm   |
| Accuracy                              | : | ±0.5%   |
| Repeatability                         | : | ±0.2% of Span   |
| Medium temperature                    | : | < 180B  |
| Medium pressure (Kg/Cm <sup>2</sup> ) | : | 10,16,25,40   |
| Flow rate                             | : | 0.3~10m/s   |
| Display                               | : | LCD Display, Flow Rate, Totalizer, heat flow rate, heat totalizer |
| Temperature Inputs                    | : | Pt 100/Pt 1000  |
| Flow rate Input I                     | : | 4-20mA  |
| Flow sensor InputType                 | : | Ultrasonic, Electromagnetic, Turbine etc                          |
| Mounting                              | : | Portable, Wall Mount  |
| Energy Function                       | : | Heat/Cool   |
| Power supply                          | : | 230VAC/24VDC/Battery Powered                                      |
| Signal output                         | : | 4~20mA, Pulse and Relay   |
| Communication                         | : | RS485, GSM/GPRS, HART   |
| Electronic Enclosure                  | : | Aluminium, ABS Plastic, MS  |
| Protection proof                      | : | IP65 (compact type);<br>IP67, IP68 (suitable for remote type)     |
| Transmitter                           | : | Integral, Remote  |

## ULTRASONIC LEVEL TRANSMITTER

|                    |   |  |
|--------------------|---|--|
| Full scale         | : | 5m, 10m, 15m, 20m, 25m, 30m                    |
| Max measure error  | : | 1% x full scale                                |
| Power              | : | DC 12-30V power consumption:<br>less than 1.5W |
| Frequency          | : | 20 KHz ~ 43.0 KHz                              |
| Output signal      | : | 4 20mA (other output is optional)              |
| Max load impedance | : | 300Ω   |
| Display panel      | : | LED, LCD.                                      |



## RADAR LEVEL TRANSMITTER



|                    |        |   |   |
|--------------------|--------|---|---|
| Application:       | Rivers | : | Lakes, Shoal  |
| Measuring Range    |        | : | 0-100 Mtrs  |
| Process Connection |        | : | Thread 40mm/Flange  |
| Temperature        |        | : | -40c ~ 100c   |
| Process Pressure   |        | : | Normal pressure   |
| Precision          |        | : | ± 3mm   |
| Frequency Range    |        | : | 26GHz   |
| Protection Grade   |        | : | IP67 / IP65   |
| Power Supply       |        | : | (6 - 24V) DC / Four-wire 24V DC / Two wire                  |
| The Signal output  |        | : | RS485 / Modbus ( 6~24V DC) 4~20mA / Hart Two wire ( 24V DC) |
| The Scene Display  |        | : | Optional  |
| Outer Covering     |        | : | Aluminum / Plastic /Single chamber                          |

## FUEL DISPENSER

|            |   |                          |
|------------|---|--------------------------|
| Flow Rate  | : | 0-50/60/120L/MIN         |
| Voltage    | : | AC 220v/ 24V DC/12V DC   |
| Power      | : | 550w                     |
| Accuracy   | : | -±0.3%                   |
| Height     | : | -52Cm                    |
| Allocation | : | auto nozzle, 4Meter Hose |



# Contact Us

# CONTACT



## **MIRRANT AUTOMATION PRIVATE LIMITED**

**MR. Sudhakar.T**

PLOT NO:6A/5,IDA

PHASE-I,PATANCHERU, SANGAREDDY, DIST,  
HYDERABAD-502319,TELANGANA,INDIA.

Email : [sales@mirrant.com](mailto:sales@mirrant.com), [sudhakar@mirrant.com](mailto:sudhakar@mirrant.com)

M : +91 9949306860, +91 9515806860

[www.mirrant.com](http://www.mirrant.com)