

RNA WRAPR

Molecular Transport Medium For Biological Samples (RUO)

Product Information:

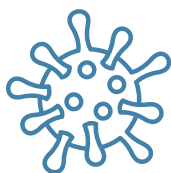
CATALOG NO	PRODUCT	SIZE
MW-AZ003-1	RNA WRAPR	250 ML
MW-AZ003-2	RNA WRAPR	500 ML
MW-AZ003-3	RNA WRAPR	1000 ML

Storage: Store at Room temperature.

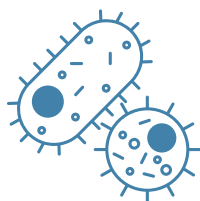
Shelf life: Up to 2 years at room temperature, when stored unfilled.

Stabilize

DNA/RNA in any Biological Sample



Virus



Bacteria



Tissues
Plant/Animal



Environment
samples

Sample Stability

No cold chain or dry ice needed!

Transport and Ship Samples at Ambient Temperature

TEMPERATURE	TIME
-20°C and below	Indefinite
4°C	Up to 2 years
Ambient Temperature	Up to 40 days
37°C	Up to 30 days
55°C	Up to 7 days

Samples are stabilized at the time of collection to analysis

Product Description

RNA WRAPR is a Molecular Transport Medium for stabilizing nucleic acids in any biological sample. Ensures DNA/RNA stability during sample transport/storage at ambient temperatures and inactivates infectious agents (bacteria, viruses). DNA/RNA can be isolated directly without sample precipitation (compatible with most DNA and RNA purification kits/ high-throughput workflows).

DNA/RNA Purification

Samples stored in RNA WRAPR are directly compatible with:

- All Azooka's AZUL DNA/RNA Extraction Kits.
- Most kits and workflows from Qiagen, Roche, Thermo-Fisher, Zymo Research etc.

Inactivates Pathogens

Inactivates Pathogens and protects DNA and RNA content only, thus prevents the risk of contamination.

Bacteria



Gram Positive
Gram Negative

Virus

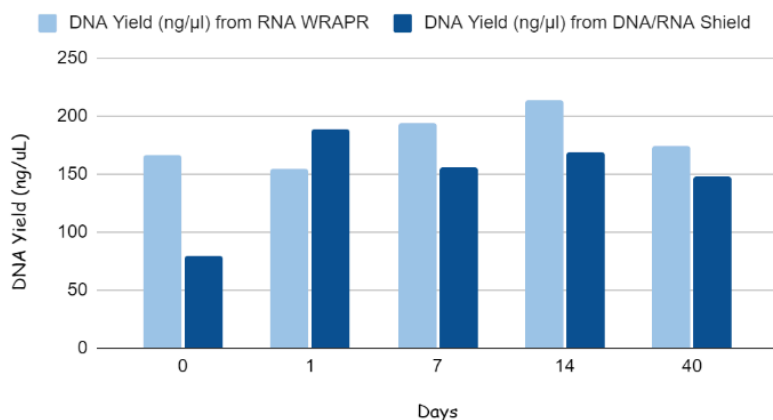


SARS-CoV-2 and
other viruses

Consistent & High

Yields of Nucleic Acids

RNA WRAPR v/s DNA/RNA Shield



RNA WRAPR is not only beneficial for sample transport but also for the long-term storage of biological samples stabilizing the nucleic acids.







The yields of Nucleic acid isolated from samples stored in RNA WRAPR are comparable with the yields obtained using Zymo's DNA/RNA shield

Fig 1: The graph demonstrates that nucleic acid isolated from bacterial cells maintains stability for up to 40 days at ambient temperature, yielding comparable results to those obtained from bacterial cells stored in DNA/RNA shield.

Sample Type	Amount/ Volume of sample used for extraction	DNA Yield	RNA Yield
Bacterial cells	10 ⁶ - 10 ⁹ cells	2-6 μg	1-5 μg
Fungal sample	200 - 500mg	1-5 μg	1-5 μg
Animal tissue	30 -60 mg	10-50 μg	10-30μg
Plant tissue	500mg - 1g	10-50 μg	9-15 μg
Environmental samples (Soil)	500mg - 1g	1-10 μg	1-5 μg

RNA WRAPR

Volume Recommendations

Sample Type	Weight/Vol of Sample	Recommended Vol of RNAWRAPR
 Bacterial Cells	10^8 cells	1 ML
 Animal Cells	10^7 cells	0.5 ML
 Animal tissue	200 -500 mg	3 ML
 Plant tissue	< 500 mg	1 ML
 Environment samples	< 200 mg	1 ML
 Swab	Enough to submerge sample	

*For larger amounts of sample, scale ratios proportionately.
Recommendation for healthy donors

FAQs

Frequently Asked Questions

Can I still use the reagent if a precipitate has formed?

This can happen on occasion due to transport or storage at lower temperatures. The reagent functionality is not affected; however, the precipitate can be resolved by heating the reagent >37 °C.

What downstream applications are compatible with the RNA WRAPR ?

DNA & RNA stored in the reagent are intended for nucleic acid-based applications such as Next-Gen Sequencing, qPCR, microarray, etc.

What type of analyses can be performed on samples stabilized in RNA WRAPR?

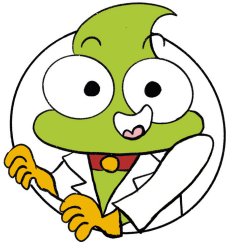
RNA WRAPR preserves nucleic acids in biological samples at room temperature and is the best option for an unbiased RNA and DNA downstream analysis, making it ideal for NextGeneration Sequencing (NGS), qPCR, microarray, and proteomics, among others.

Do tissues need to be homogenized before transport and storage?

It is generally recommended to collect tissue samples no greater than 5 mm in any single direction. Samples can be homogenized at any point.

How do I dispose of samples collected in RNA WRAPR?

Sample disposal is dependent on the collected biological specimen. Please dispose of the contents/container in accordance with local/regional/national/international regulations.



azooka

mWRAPR

Our Other Collection Kits

Product	Catalog No.	Recommended Processing
mWRAPR Fecal Collection tubes	MW-AZ006	AZUL Stool DNA/RNA extraction kit
mWRAPR Saliva Collection tubes	MW-AZ0010	AZUL Saliva DNA/RNA extraction kit
mWRAPR Oral/Buccal Collection tubes	MW-AZ0011	AZUL Microbiome DNA/RNA extraction kit
mWRAPR Cervical Collection tubes	MW-AZ0026	
mWRAPR Microbiome Collection tubes	MW-AZ0022	
mWRAPR Blood DNA Collection tubes	MW-AZD01	AZUL Blood DNA extraction kit
mWRAPR Blood RNA Collection tubes	MW-AZR01	AZUL Blood RNA extraction kit
mWRAPR Blood CF-DNA Collection tubes	MW-AZ002	AZUL Blood CF-DNA extraction kit
mWRAPR Sperm Stabilization Solution	MW-AZ0028	AZUL Sperm DNA extraction kit
mWRAPR Cell Preservation Medium	MW-AZ0029	AZUL Animal Cell Culture DNA/RNA extraction kit



www.azooka.life

MANUFACTURED AT:

1A, Kushal Garden Arcade, 'C' Block, 5th Floor, Peenya Industrial Area, 2nd Phase, Bengaluru, Karnataka, India- 560058

ISO 13485 CERTIFIED



hello@azooka.life



+91 8088747968



www.azooka.life