



Mineris India Pvt. Ltd.



*Year of
Establishment*
2022



**+91-9625153579,
+91-9873337471**



MINERIS has come to be known as a name of immense repute in the highly specialized Aggregates & Mining Spare and Ware Parts. Founded in 2022, MINERIS is still proudly on its way to being the one-stop solution for aftermarket parts of the Slurry Pump, Slurry Valve crusher, screen and other mineral processing equipment. Our core mission is to get you cheaper parts with uncompromised quality, thereby helping you to get the greatest economic benefits in the operations of mining, aggregate production and waste recycling.



We have huge years' experience. Our company set scientific research and development, production and manufacturing as one, with pump design, casting, machining, assembly, as well as heat treatment, physical and chemical analysis and other complete scientific research, production and testing means, for new products, new materials, new technology, new technology development and application, as well as first-class product quality to provide a strong support.

Name of Founder	Mr. Arvind Sharma
Year of Establishment	2022
Nature of Business	Manufacturer, Exporter & Supplier
Number of Employees	6 - 20 People
Market Covered	Worldwide
GST No	24AASCM8220F1ZE
Legal Status of Firm	Private Limited Company



Horizontal Slurry pump MM, HM series



M-Series HM Range Pump

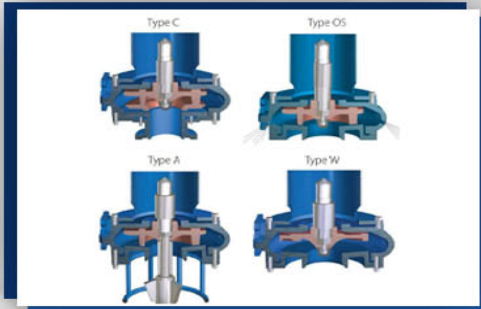


Key features and benefits M - HM series & MM Series

Vertical Sump pump



Mineris – Vertical Sump Pump



Various methods of agitation and impeller combinations

Pump Spare parts



Bearing cartridge Assembly suitable for Metso verecal Slurry pump VS100



Bearing Housing suitable for Metso VS80, VS100



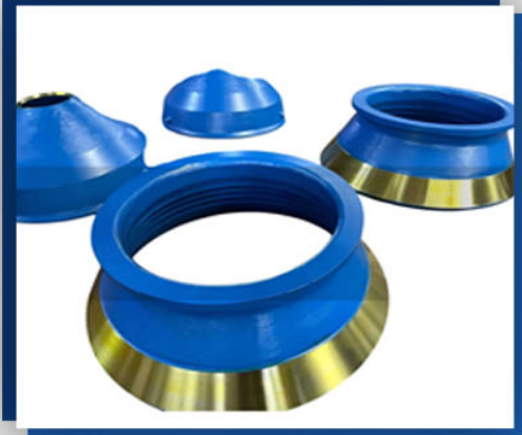
Shao Sleeve in Hi-chrome suitable for Metso pump



Bearing Housing suitable for Metso Horizontal Slurry pump



Cone Crusher Mantle, Concave / Bowlliner



Mantle & Bowl Liner

Valve all type



GLOBE VALVE ND16 / ND40



GLOBE VALVE



GATE VALVE



SWING CHECK VALVE

Slurry Pump Wet End Parts



Mild Steel Cover Wet End



Slurry Pump Alloy Impeller



Slurry Pump Back Liner



Slurry Pump Wet End Parts



Slurry Pump Casing



Slurry Pump Cover Plate



Slurry Pump Discharge Joint Ring



Slurry Pump Back Liner



Slurry Pump Impeller



Slurry Pump Intake Joint Ring



Slurry Pump Rubber Impeller



Slurry Pump Rubber Liner



Slurry Pump Shaft Seal



Slurry Pump Throat Bush



Victaulic Flange Adapter



Slurry Pump Drive End Parts



Bearing Frame for Horizontal Slurry Pump



Slurry Pump Adjusting Screw



Slurry Pump Bearing



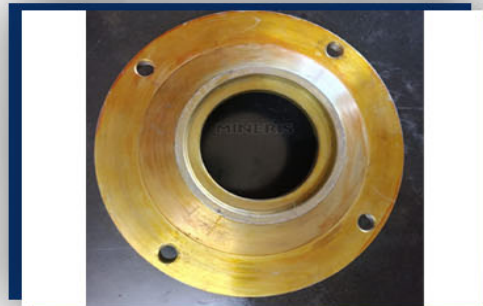
Slurry Pump Bearing Cartridge Assembly



Slurry Pump Bearing Housing



Slurry Pump Bearing Seal



Slurry Pump End Cover



Slurry Pump Clamp Washer



Slurry Pump End Cover Screw Set



Slurry Pump Labyrinth



Slurry Pump Labyrinth Locknut



Slurry Pump Piston Ring



Slurry Pump Shaft Seal Parts



Lantern Ring



Slurry Pump Expeller



Slurry Pump Impeller Release Collar



Slurry Pump Lantern Restrictor



Slurry Pump Lantern Ring



Slurry Pump Metal Expeller Ring



Slurry Pump Neck Ring



Slurry Pump Rubber Expeller Ring



Slurry Pump Shaft Spacer



Slurry Pump Stuffing Box



Horizontal Slurry Pump Casing



Gravel Pump Volute Casing



Mineris India Pvt. Ltd.



Contact Person

Mr. Arvind Sharma

Address

6/7, Bansidhar Estate, Central Workshop Road, ODHAV,
Ahmedabad, Gujarat, India - 382415

Call Us

+91-9625153579, +91-9873337471

Email

arvind.sharma@mineris.in | Sales@mineris.in

Web Address

<http://www.mineris.co.in>

Web Page

www.exportersindia.com/mineris-india

www.indianyellowpages.com/ahmedabad/mineris-india-pvt-ltd-15400370