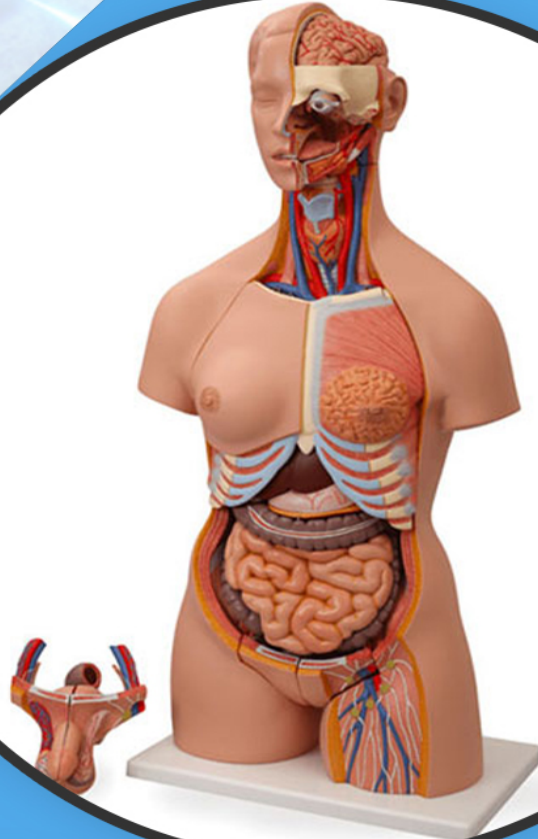
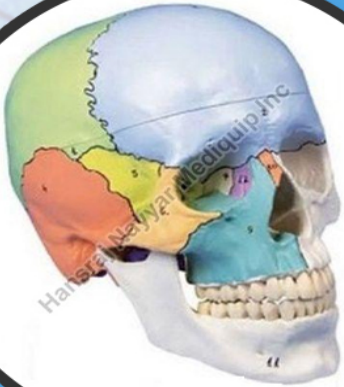




HANSRAJ NAYYAR
MEDIQUIP INC



**Year of
Establishment
1937**

**Manufacturer,
Supplier, Exporter**

✉ hansnayyar@yahoo.com

☎ +91-9814051861, +91-183-2555091, 08068051332 Ext : 414





Hansraj Nayyar Mediquip Inc

Established in the year 1937, we at Hansraj Nayyar (Mediquip) Inc. are a renowned manufacturer , exporter and supplier of good quality products. We have specialized in Human Anatomical Models, Animals Anatomical Models, Human Skeleton Anatomical Models, Laryngoscope Sets, Female Catheterization Training Models, Stainless Steel Surgery Instrument Sets and Auto Cpr Cardiac Chairs. We believe in providing the best quality of the equipment. We are based in Amritsar, Punjab (India).

Our business is connected to health as well as the well-being of the people which is why we don't make any compromises in the quality. We believe in answering the wishes of our customers and associates.

Our Mission

To exceed the hopes of the buyers with highly innovative and customized quality papers, we are associated with a leading distributor network. Our mission is to give great quality products to everyone in the country. Our delivery is open for worldwide customers.

Quality Assurance

Hansraj Nayyar Mediquip Inc. is a customer-focused company and therefore effectively performs its business activities. We confirm not to make any compromise on the quality and products are available at an affordable cost.

Our professional and committed team works under the guidance of Mr. Rohit Nayyar. It comprises a strong sync of managers, quality controllers, engineers and packers having vast experience and proficiency in the domain.

Name of CEO

Mr. Rohit Nayyar

Nature of Business

Manufacturer, Supplier, Exporter

Number of Employees

Below 20 People Approx

Market Covered

Worldwide

Year of Establishment

1937

GST No

03AAAFH5950J1ZJ

Annual Turnover

Below Rs. 0.5 Crore Approx.



3 Shelf Instrument Trolley



Electric ICU Bed With Weighing Scale



Fully Electric Hospital Bed



Fully Motorized Hospital Bed



Fully Motorized ICU Bed



Hospital Wheelchair



I V Stand With Wheel



ICU Bed with Embedded Panel



Mild Steel Cardiac Table



Mild Steel Hospital Stool



Mild Steel Motorized Delivery Bed



Modular Crash Cart



Motorized Dialysis Chair



Motorized Gynecology Examination Couch



Revolving Stool



Stainless Steel Dressing Trolley



Stainless Steel Mayo Tray Stand



Stainless Steel Medical Monitor Trolley



Stainless Steel Trauma Care Recovery Trolley



Super Deluxe Bedside Locker



**2 Lumbar Vertebrae 3D
Anatomical Model**



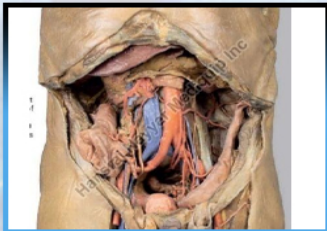
**3 Thoracic Vertebrae 3D
Anatomical Model**



**5 Year Old Child Pelvis
3D Anatomical Model**



**Abdomen Vasculature
3D Anatomical Model**



**Abdomen with Bilateral Hernias
3D Anatomical Model**



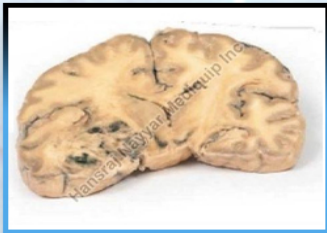
**Abdomen with Lingular Hernia
3D Anatomical Model**



**Arterial and Venous Circulation
3D Anatomical Model**



**Arterial Circulation
3D Anatomical Model**



**Astrocytoma
3D Anatomical Model**



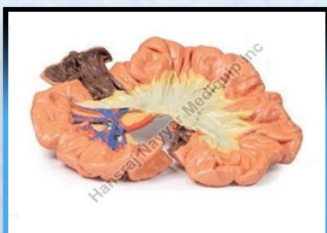
**Biceps, Bones and Ligaments
3D Anatomical Model**



**Bone Structure
3D Anatomical Model**



**Bowel Portion Jejunum
3D Anatomical Model**



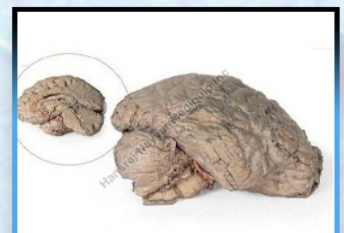
**Bowel Portion Ileum
3D Anatomical Model**



**Brachial Artery
3D Anatomical Model**



**Brain Cerebrum
3D Anatomical Model**



**Brain Hemisection
3D Anatomical Model**



**Brain Stem 3D
Anatomical Model**



**Bronchial Tree 3D
Anatomical Model**



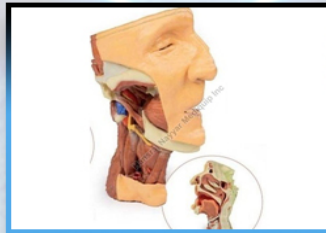
**Cerebral Haemorrhage
3D Anatomical Model**



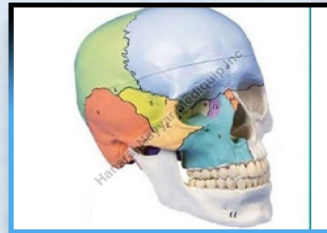
**Circle Willis 3D
Anatomical Model**



**Cubital Fossa 3D
Anatomical Model**



**Deep Face 3D Anatomical
Model**



**Didactical Painted Skull
3D Anatomical Model**



**Dural Skull 3D
Anatomical Model**



**Elbow, Forearm and Hand
3D Anatomical Model**



**Femal Hemipelvis and Thigh
3D Anatomical Model**



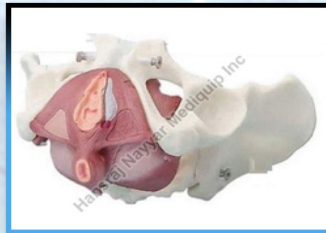
**Female Left Pelvis and Proximal
Thigh 3D Anatomical Model**



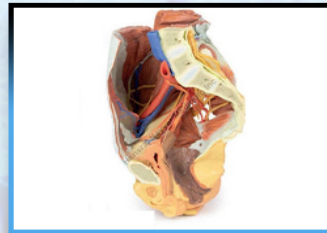
**Female Pelvis 3D
Anatomical Model**



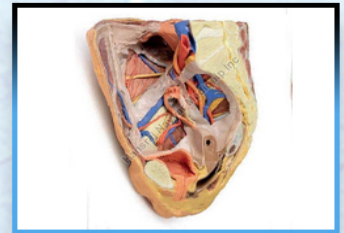
**Female Pelvis Deep Dissection
3D Anatomical Model**



**Female Pelvis with Pelvic
Floor Musculature 3D
Anatomical Model**



**Female Right Pelvis 3D
Anatomical Model**



**Female Right Pelvis
Superficial and Deep Structure
3D Anatomical Model**



**Flexed Knee Joint Deep
Dissection 3D Anatomical Model**



**Foot Plantar Structures
3D Anatomical Model**



**Foot Deep Plantar Structures
3D Anatomical Model**



**Foot Parasagittal Cross Stion
3D Anatomical Model**



**Foot Plantar Surface
3D Anatomical Model**



**Forearm and Hand
3D Anatomical Model**



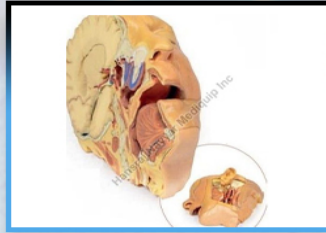
**Glioblastoma Multiforme
3D Anatomical Model**



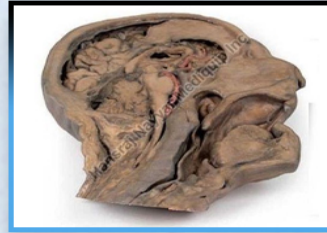
Hand & Arm 3D Anatomical Model



Hand Skeleto Anatomical Model



Head and Neck 3D
Anatomical Model



Head and Neck Parasagittal
Section 3D Anatomical Model



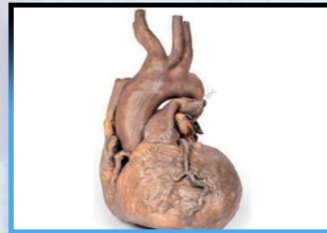
Head and Visceral Column
3D Anatomical Model



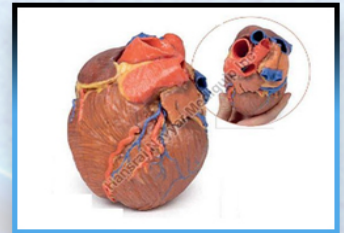
Head Transverse Section
3D Anatomical Model



Head, Neck and Shoulder with
Angiosomes 3D Anatomical Model



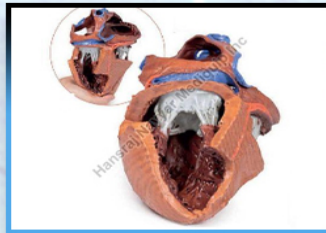
Heart With Light Dissection
3D Anatomical Model



Heart 3D Anatomical Model



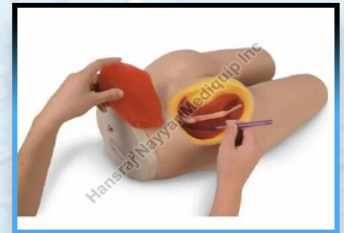
Heart and Distal Trachea, Carina
and Primary Bronchi
3D Anatomical Model



Heart Internal Structure
3D Anatomical Model



Internal Abdominal Wall
3D Anatomical Model



Intramuscular Injection
3D Anatomical Model



Knee Joint Extended
3D Anatomical Model



Knee Joint Flexed 3D
Anatomical Model



Lateral Orbit 3D
Anatomical Model



Left Lung Hilum 3D
Anatomical Model



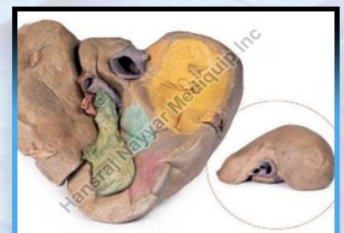
Left Shoulder Joint 3D
Anatomical Model



Leg and Foot Deep Structures
3D Anatomical Model



Ligamentated Female Pelvis
3D Anatomical Model



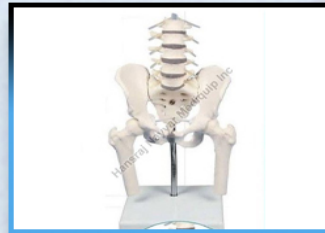
Liver with Vessels and Gall
Bladder 3D Anatomical Model



**Lower Limb Deep dissection
3D Anatomical Model**



**Lower Limb Superficial Dissection
with Male Left Pelvis 3D
Anatomical Model**



**Lumbar Spine with Pelvis and
Femoral Stumps 3D
Anatomical Model**



**Lumbar Vertebral Column
3D Anatomical Model**



**Lumbar Vertebral Column with
Pelvis and Femur Stumps
3D Anatomical Model**



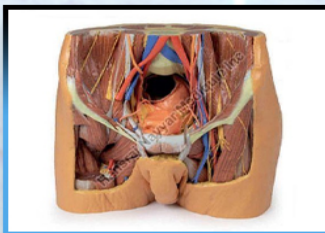
**Lumbar with Pelvis 3D
Anatomical Model**



**Lung Slab Hilum
3D Anatomical Model**



**Male Hemipelvis and Thigh
3D Anatomical Model**



**Male Pelvis 3D Anatomical
Model**



**Male Pelvis with Pelvic Floor
Muscles 3D Anatomical Model**



**Medial Orbit 3D Anatomical
Model**



**Muscle Marking Skull 3D
Anatomical Model**



**Nervous System 3D
Anatomical Model**



**Newborn Human Baby
3D Anatomical Model**



**Paranasal Sinus 3D
Anatomical Model**



**Parotid Gland and Facial Nerve
Dissection 3D Anatomical Model**



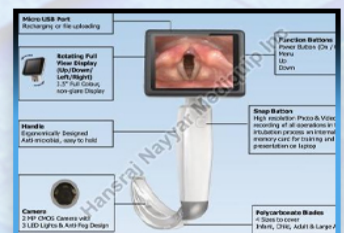
**Acupuncture Cow 3D
Anatomical Model**



**Acupuncture Horse 3D
Anatomical Model**



**Acupuncture Pig 3D
Anatomical Model**



**Liver with Vessels and Gall
Bladder 3D Anatomical Model**



HANSRAJ NAYYAR
MEDIQUIP INC

Mr. Rohit Nayyar



Address

Hans Towers, Hall Bazar, Holy City, Amritsar, Punjab, India - 143001



Call Us

+91-9814051861, +91-183-2555091, 08068051332 Ext : 414



Email

hansnayyar@yahoo.com



Web Address

www.hansrajnayyarmediquip.in



Web Page

www.exportersindia.com/hansrajnayyar

