

■ **3/8 Pilot Operated Check Modular Valves**

■ **Specifications**

Max. Operating Pressure Kgf/cm ²	Max. Flow L/min.
250	70



■ **Model Number Designation**

F-	MPA	-03	-2	-20	H01
Special Seals	Series Number	Valve Size	Cracking Pressure Kgf/cm ²	Design Number	Design Standard
F: Special Seals For Phosphate Ester Type Fluids (Omit if not required)	MPA: Pilot Operated Check Modular Valve A-Line MPB: Pilot Operated Check Modular Valve B-Line MPW: Pilot Operated Check Modular Valve A, B-Line	03	2: 2 4: 4	20 (Standard) 2001 (Low Pilot Pressure Control Type)	H01

* Please consult factory for availability.

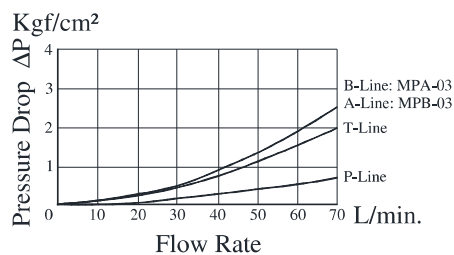
Graphic Symbols

Model Numbers	Graphic Symbols	Detailed Graphic Symbols
MPA-03		
MPB-03		
MPW-03		

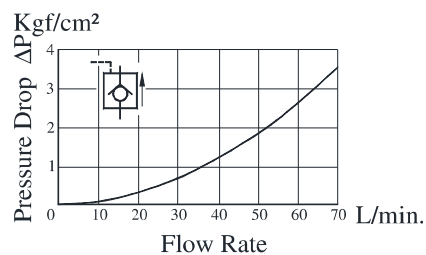
■ **Typical Performance Characteristics**

Hydraulic Fluid: viscosity 35cSt, Specific gravity 0.850

● **Pressure Drop**

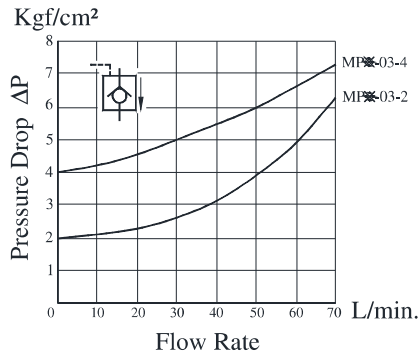


● **Pressure Drop for Reversed Controlled Flow**

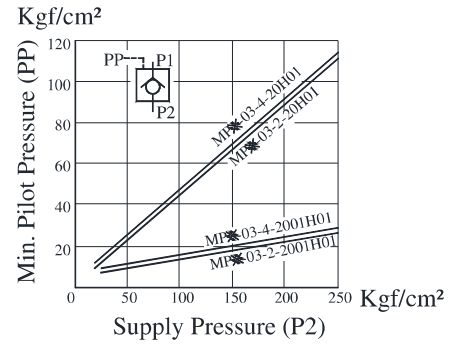


F
03 Series Modular Valves

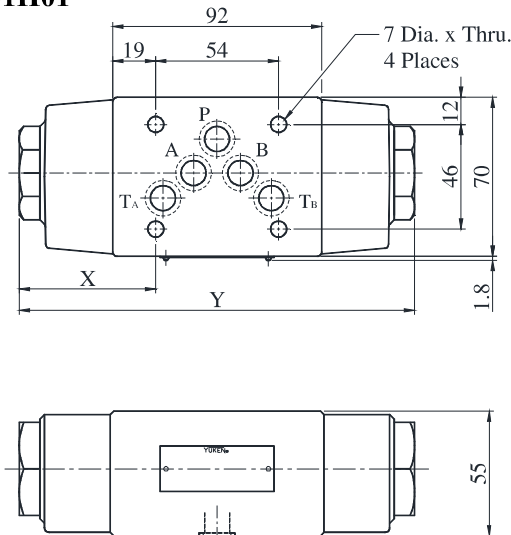
● **Pressure Drop for Free Flow**



● **Min. Pilot Pressure**



- **MPA-03-※-20H01/2001H01**
- **MPB-03-※-20H01/2001H01**
- **MPW-03-※-20H01/2001H01**



DIMENSIONS IN MILLIMETRES

Mass.....3.5 Kg (Approx.)

Sl.No.	Model Number	X	Y
1	MP※-03-※-20H01	60	174
2	MP※-03-※-2001H01	62	178

■ **Spare Parts List**

● **List of Seals**

Sl.No.	Name of Parts	Part Numbers	Qty.
			MP※-03
1	O-Ring	SO-NB-P24	2
2	O-Ring	AS568A-014	5

● **List of Seal Kits**

Model Numbers	Seal Kit Numbers
MPA-03	KS-MPA-03-20
MPB-03	
MPW-03	

Note : When ordering the seals, please specify the seal kit number from the right table.