



HAND PUMP HP12 AND HP16

ENGINEERING

1

Ref. No. P04910

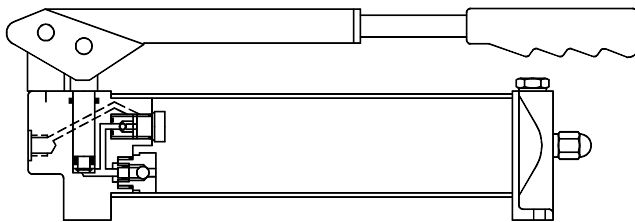
Release 01/2002

Description

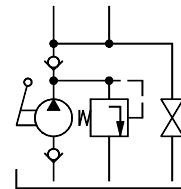
Heavy duty construction with hardened and ground piston. Renewable Suction, Delivery, Relief and Release valve parts. Integral Relief and Release valves. Collapsible hand lever for compact size and short hand movement at low pressure.



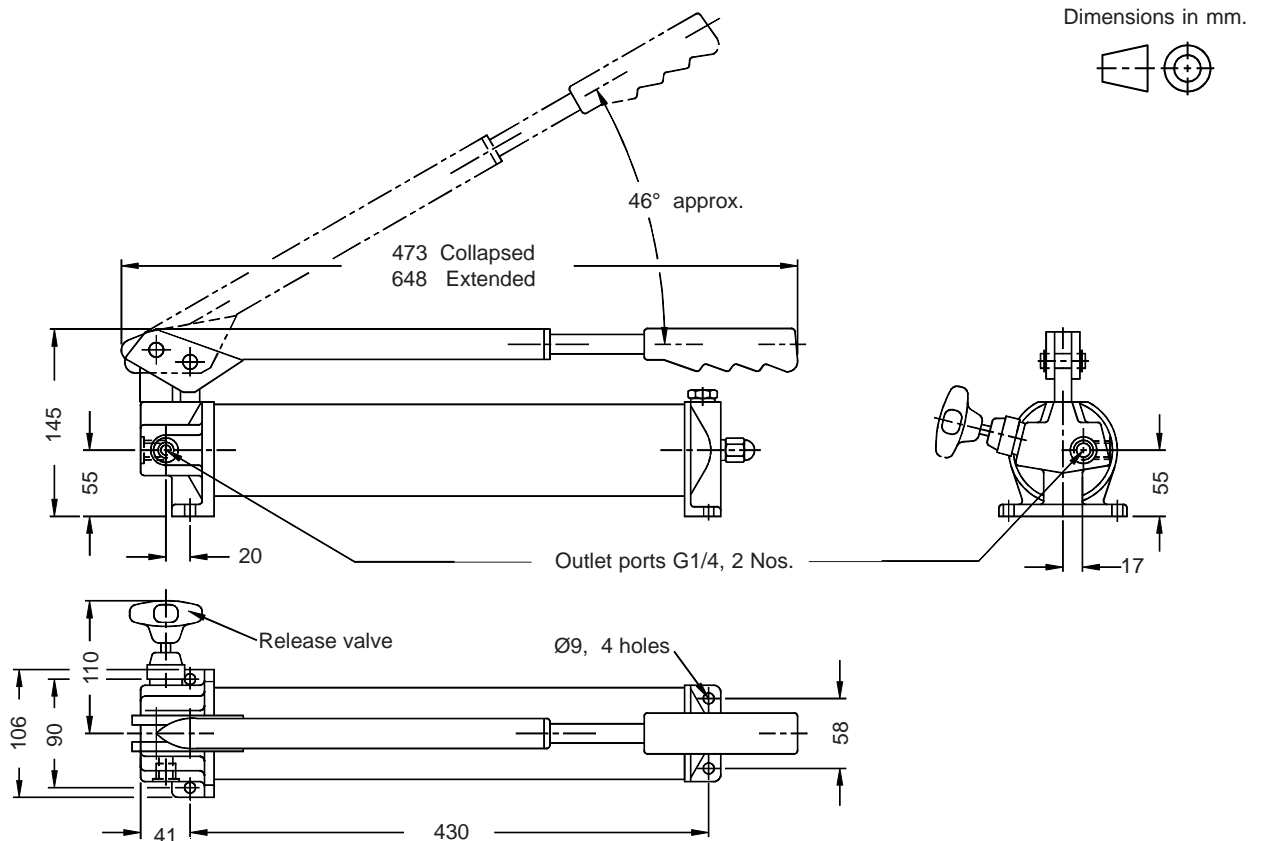
Section



Hydraulic Symbol



Unit dimension



Polyhydron Pvt. Ltd.

78-80, Machhe Industrial Estate,
Machhe, Belgaum - 590 014. INDIA.

Phone : +91-(0)831-411001

Fax : +91-(0)831-411002

E-mail : polyhydron@vsnl.com

Website : www.polyhydron.com



HAND PUMP HP12 AND HP16

ENGINEERING

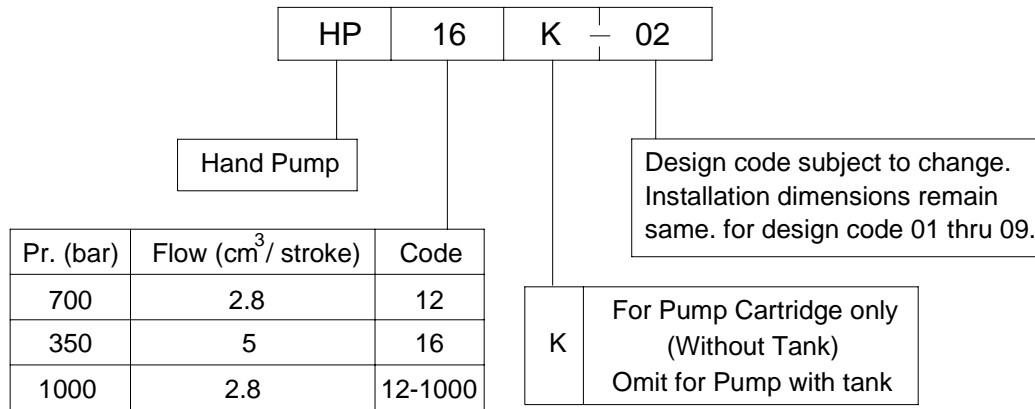
2

Ref. No. P04910

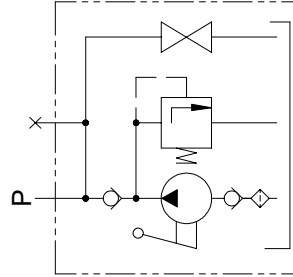
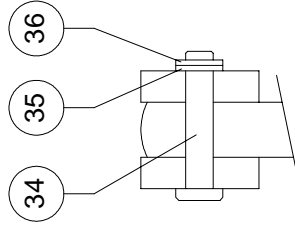
Technical specification

Construction	Sealed piston with ball type suction and delivery valve.		
Hydraulic medium	Mineral oil (ISO VG 68 Grade recommended)		
Maximum working pressure	HP 16 & HP 16 - K	350 bar	
	HP 12 & HP 12 - K	700 bar	
	HP 12-1000 & HP 12-1000 K	1000 bar	
Flow capacity	HP 16 & HP 16 - K	5 cm ³ / stroke	
	HP 12 & HP 12 - K	2.8 cm ³ / stroke	
	HP 12-1000 & HP12-1000 K	2.8 cm ³ / stroke	
Oil tank capacity	1.2 l.		
Oil tank displacement	1 l.		
Force required at the end of the hand lever at max. pressure	400 N. APPROX.		
Mass	8.7 kg. (without oil).		

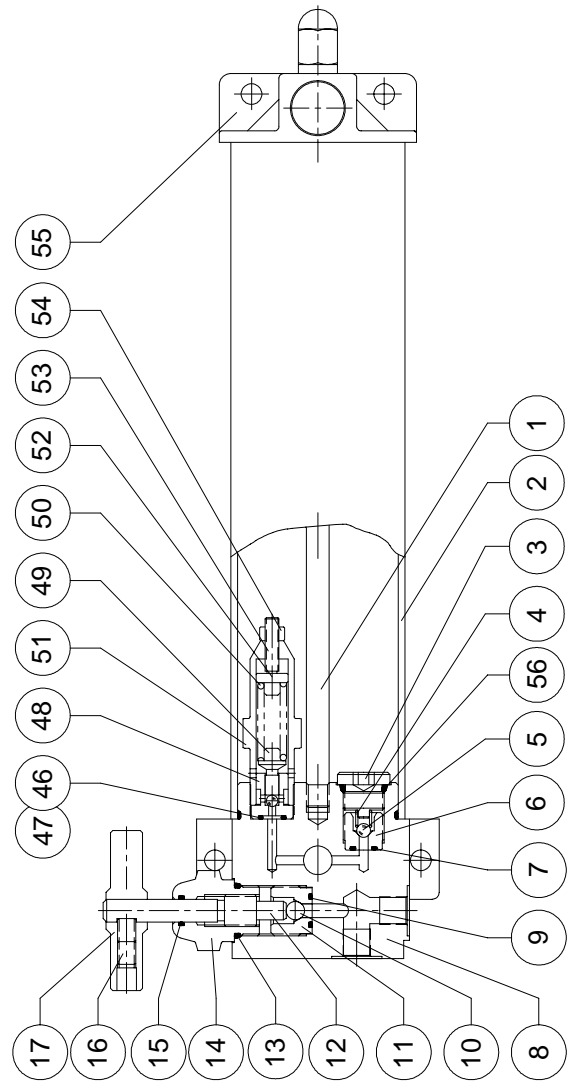
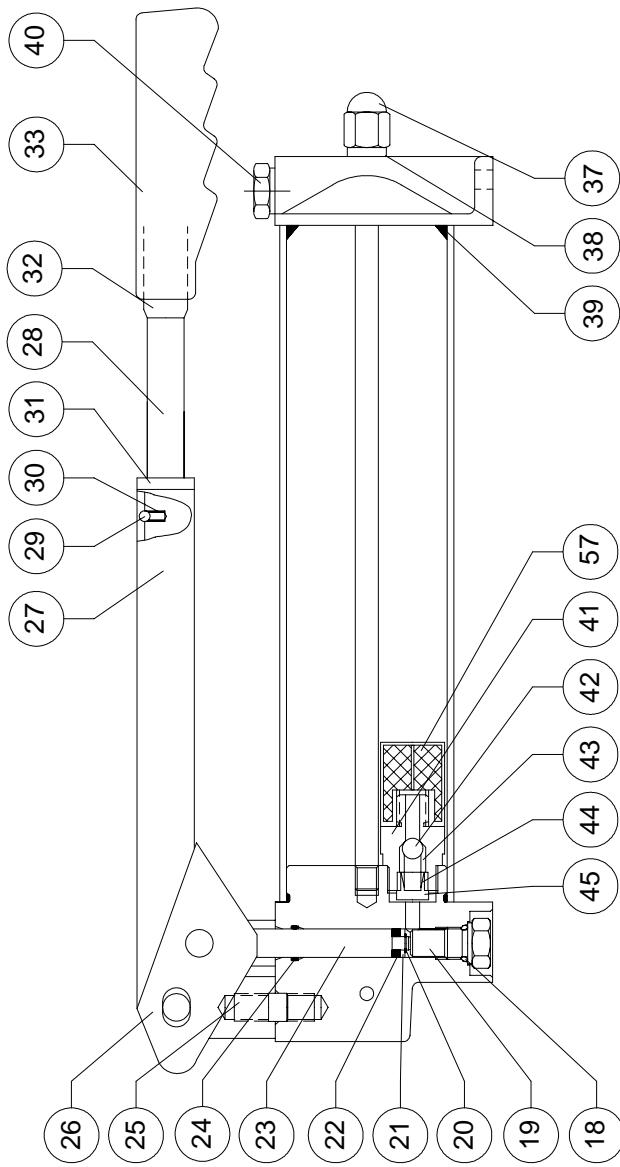
Ordering code



Sectional view and Part list



Hydraulic symbol





**HAND PUMP
HP12 AND HP16**

SERVICE

4

Ref. No. P04910

Part no.	Description	Qty.	Part no.	Description	Qty.
1	Tie rod	1	30	Spring detension	1
2	Reservoir tube	1	31	Guide screw	1
3	Spring guide	1	32	Grip holder	1
□ 4	Spring delivery	1	33	Grip	1
5	Ball	1	34	Pin	2
6	Delivery valve seat	1	35	Spacer	2
* 7	O'Ring (7.1 id x 1.8 csd.)	1	36	Circlip external	4
8	Pump body	1	37	Domenut	1
* 9	O'Ring (10 id x 1.8 csd.)	1	* 38	Bonded seal (G 1/8)	1
10	Ball	1	* 39	O'Ring (65 id x 3.55 csd.)	2
11	Release valve seat	1	40	Plug	1
12	Spindle	1	41	Suction valve housing	1
* 13	O' Ring (19 id x 2.5 csd.)	1	42	Ball	1
14	Guide	1	□ 43	Spring suction	1
* 15	O'Ring (10 id x 1.8 csd.)	1	44	Spring guide	1
16	Grub screw	2	45	Screw	1
17	Lever	1	* 46	Backup ring (12 x 8 x1.5)	1
* 18	O' Ring (11.4 id x 2.5 csd.)	1	* 47	O'Ring (4.5 id x 1.8 csd.)	1
19	Plug	1	48	Relief valve seat	1
□ 20	Circlip external (Ø5, C type) HP12 (Ø6, C type) HP16	1	49	Poppet	1
21	Spacer	1	□ 50	Spring relief	1
* 22	Seal fabric (12 x 6 x 7) HP12 (16 x 8 x 8) HP16	1	51	Spring casing	1
23	Plunger	1	52	Spring pad	1
* 24	O'Ring (12 id x 2 csd.)	1	53	Socket set screw	1
25	Stud	1	54	Nut	1
26	Link	1	55	End cover	1
27	Yoke	1	* 56	O'Ring (15 id x 2.5 csd.)	1
28	Handle rod	1	57	Suction strainer	1
29	Ball	1			

Note : * Recommended seal kit. * & □ Recommended spare kit.

While ordering the individual spares / seal kit / spare kit give part.no. and complete details of model code as punched on the pump body.