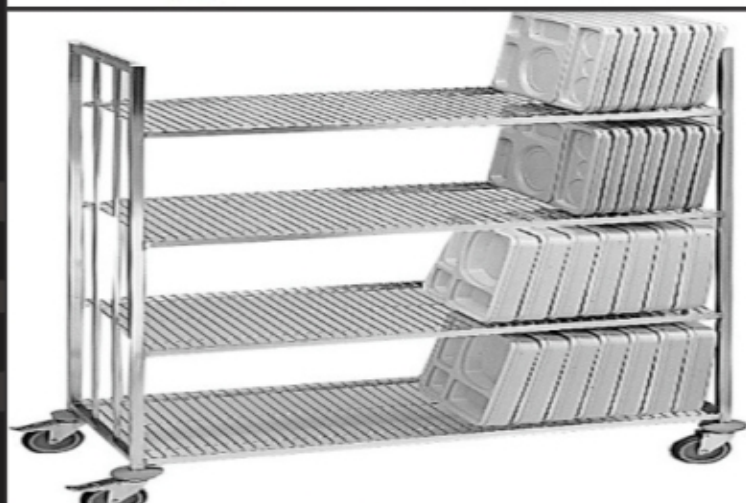




# Modern Street Est.

Adding Life To Kitchen





## About US

Modern Street Est has carved a niche for itself as a well-reckoned Exporter and Supplier of huge assortment of top class Stainless Steel Kitchenware. We bring forth vast gamut of Stainless Steel Kitchenware that is inclusive of tainless Steel Kitchen Cabinets, Stainless Steel Operating Room Case Carts, Stainless Steel Laboratory Chemical Cart, Stainless Steel Laboratory Wall Cabinet, Stainless Steel Biological Laboratory Sink, Stainless Steel Trough, Stainless Steel Laboratory Scrubbing Sink, Stainless Steel Floor Mount Clean Sink with Foot Pedals, Stainless Steel Laboratory Case Work Cabinet Sink, Stainless Steel Hand Wash Sink, Stainless Steel Sink Lab Split Undershelf, Stainless Steel Single Drawer Table, Stainless Steel Table with Casters, Stainless Steel Laboratory Sink Table, Stainless Steel Racks, Stainless Steel Double Drawer Table, Stainless Steel Laboratory Round Legs Sink Table, Stainless Steel 3 Door Surgical Instrument Cabinet, Stainless Steel Double Door Cabinet, Stainless Steel Modular Double Door Cabinets, Stainless Steel Surgical Pass Through Cabinet, Stainless Steel Laboratory Pass Through Cabinet and Stainless Steel Cleanroom Pass Through Cabinet, Stainless Steel Kitchen Exhaust Hoods, Stainless Steel Refrigerators, Stainless Steel Sinks, Stainless Steel Tables, Stainless Steel Trolleys and Stainless Steel Shelf. Stainless Steel Kitchenware, available with us, is rust resistant and has smooth finishing.

# Our PRODUCTS

## S/S RACK TROLLEY

With German Caster Wheels ,Tray Holder

Price : 1850.00 SR

Dim : L 450 x W 650 x H 1800 MM ht

We have more different size as per  
Clint requirement Same item.

Consider: AISI304,18/10



## S/S SMALL RACK TROLLEY WITH CUTLERY STAND

With German Caster Wheels,

Tray Holder , Cutlery stand

Price : 2500.00

Dim : 1200 x 650 x 1500 HT

We have more different size as per  
Clint requirement Same item.

Consider: AISI304,18/10



## S/S SERVIES TROLLEY DOUBALE SHELF

With German Caster Wheels ,

Price :1500.SR

Dim : 1000 x 650 x 1000 HT

We have more different size as per  
Clint requirement Same item.



## S/S SERVIES TROLLEY DOUBALE SHELF

With German Caster Wheels ,

Price :1500.SR

Dim : 1000 x 650 x 1000 HT

We have more different size as per  
Clint requirement Same item.



## S/S WIER SHELF WIRH 4 LAYER

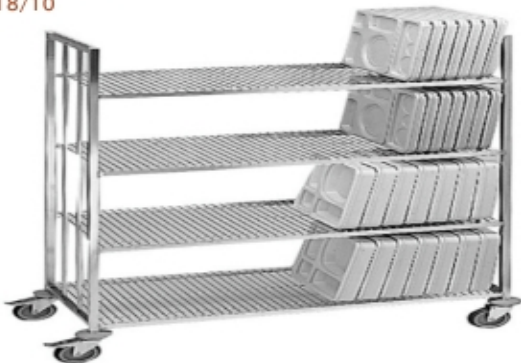
With German Caster Wheels,

Price : 6500.00

Dim : 1500 x 500 x 1500 HT

We have more different size as per  
Clint requirement Same item.

Consider: AISI304,18/10



## S/S BOWL TROLLEY STAND

With German Caster Wheels

Price : 1950.00

Dim : 500 x 500 x 900 HT

We have more different size as per  
Clint requirement Same item.

Consider: AISI304,18/10



# Our PRODUCTS

## S/S SERVES TROLLEY FOR HOSPITAL

With German Caster Wheels  
Price : 1500.00 SR  
Standard Size  
We have more different size as per  
Clint requirement Same item.  
Consider: AISI304,18/10



## S/S WORKING TABLE WITH UNDER SHELVES

Price: 1300.00 SR  
Dim : 1000 x 700 x 900 MM HT  
We have more different size as per  
Clint requirement Same item.  
Consider: AISI304,18/10



## S/S WORKING TABLE WITH UNDER SHELVES

Price: 1800.00 SR  
Dim : 1000 x 700 x 900 MM HT  
We have more different size as per  
Clint requirement Same item.  
Consider: AISI304,18/10



## S/S WORKING TABLE WITH UNDER SHELVES

With Back Splash  
Price: 1800.00 SR  
Dim : 1000 x 700 x 900 MM HT  
We have more different size as per  
Clint requirement Same item.  
Consider: AISI304,18/10



## S/S CUTLERY STAND

Space For Bread Adjustable legs  
Price: 3500.00 SR  
Dim : 750 x 700 x 1500 MM HT  
We have more different size as per  
Clint requirement Same item.  
Consider: AISI304,18/10



## S/S CUPBOARD WITH STORAGE BIN

Price: 3000.00 SR  
Dim : 750 x 700 x 850 MM HT  
We have more different size as per  
Clint requirement Same item.  
Consider: AISI304,18/10



# Our PRODUCTS

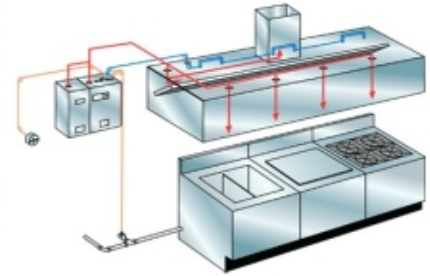
## S/S WALL MOUNTED HOOD WITH FILTER

Quotation Request  
Dim : On Demand  
We have more different size as per  
Clint requirement Same item.  
Consider: AISI304,18/10



## RESTAURANT Hood w/ FIRE SUPPRESSION SYSTEM - OVERLAPPING

Overlapping Appliance Protection is one of the two design options available with the R-102 Restaurant Fire Suppression System. The design is flexible and simple. Nozzles are installed in a straight line with a maximum nozzle spacing of 25.5 in. (647 mm) and a height of 40-45 in. (1016-1143 mm) above the cooking surface. The nozzles are not aimed individually at specific appliances but instead are aimed at the hazard zone centerlines. These overlapping discharge patterns create a continuous zone of protection in which all appliances within this area are protected.



## S/S ISLAND HOOD FILTER WITH GRACE CUP

Quotation Request  
Dim : On Demand  
We have more different size as per  
Clint requirement Same item.  
Consider: AISI304,18/10



## S/S ISLAND HOOD FILTER WITH GRACE CUP

With Complete Fire suspension System  
Quotation Request  
Dim : On Demand  
We have more different size as per  
Clint requirement Same item.  
Consider: AISI304,18/10



## S/S BASE CABINET WITHOUT BACK SPLASH

With Hinged Door , Round Adjustable legs  
Dim : 1000 x 700 x 850 mm ht  
Price : 2500.00 SR  
We have more different size as per  
Clint requirement Same item.  
Consider: AISI304,18/10



## S/S BASE CABINET WITH BACK SPLASH WITH DRAWER SET

With Hinged Door , Round Adjustable legs  
Dim : 1000 x 700 x 850 mm ht  
Price : 3500.00 SR  
We have more different size as per Clint requirement Same item.  
Consider: AISI304,18/10



# Our PRODUCTS

## S/S DRAWER BASE CABINET

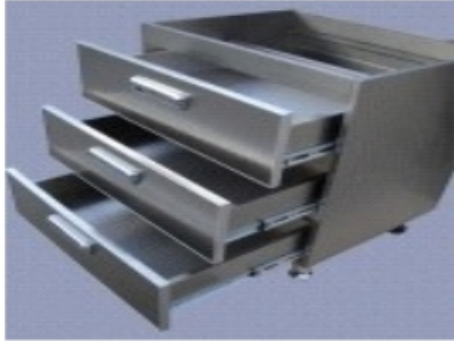
Round Adjustable legs

Dim : 800 x 700 x 850 mm ht

Price : 1500.00 SR

We have more different size as per Clint requirement Same item.

Consider: AISI304,18/10



## S/S MOBIL BAIN MARY

With complete Heat System 4 G/N capacity

Germany Caster Wheels

Dim: 1500 x 800 x 900 mm ht

Price : 6500.00 SR

We have more different size as per Clint requirement Same item.

Consider: AISI304,18/10



## S/S BAIN MARY

With Tray Slide , Sneeze Guard

With complete Heat System 4 G/N capacity

Germany Caster Wheels

Dim: 1500 x 800 x 900 mm ht

Price : 7500.00 SR

We have more different size as per Clint requirement Same item.

Consider: AISI304,18/10



## S/S SALAD BAR REFRIGERATOR CABINET

With Drawer set with complete cooling system

Germany Caster Wheels

Dim: 1500 x 800 x 900 mm ht

Price : 9500.00 SR

We have more different size as per Clint requirement Same item.

Consider: AISI304,18/10



## S/S SALAD BAR REFRIGERATOR CABINET TROLLEY

Upper double Shelves

With Drawer set with complete cooling system

Germany Caster Wheels

Dim: 1500 x 800 x 900 mm ht

Price : 11000.00 SR

We have more different size as per Clint requirement Same item.

Consider: AISI304,18/10



## S/S PIZZA PREPARATION REFRIGERATOR CABINET TROLLEY

Upper double Shelves

With Drawer set with complete cooling system

Germany Caster Wheels

Dim: 1500 x 800 x 900 mm ht

Price : 12000.00 SR

We have more different size as per Clint requirement Same item.

Consider: AISI304,18/10



# Our PRODUCTS

## S/S WALL SHELVE

With complete Asseccries

Dim: 1000 x 400

Price : 800.00 SR

We have more different size as per  
Clint requirement Same item.

Consider: AISI304,18/10



## S/S WALL SHELVE

With complete Asseccries

Dim: 1000 x 400

Price : 600.00 SR

We have more different size as per Clint requirement Same item.

Consider: AISI304,18/10



## S/S WALL CABINET

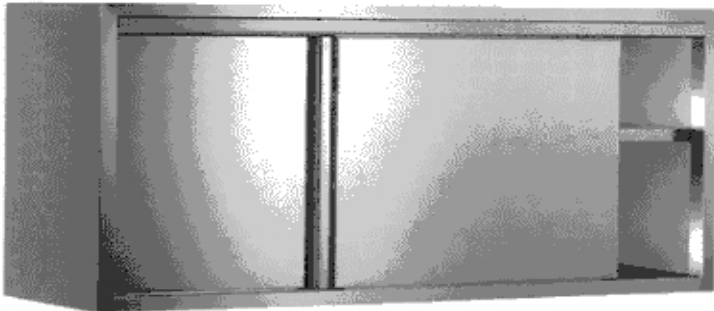
With Sliding Door ,Mid Shelves

Dim: 1000 x 400 x 600 mmht

Price : 2100.00 SR

We have more different size as per  
Clint requirement Same item.

Consider: AISI304,18/10



## STAINLESS STEEL HOT FOOD BAIN MARY

Hot Bainmarie Counter Comes with gastronorm pans  
made in SS stainless steel 304 with different capacities  
and interchangablity provided with tray slide for ...  
With Different Size Available



## BAIN MARY SERVICES COUNTER 8 GN CAPACITY

Hot Bainmarie Counter Comes with gastronorm pans made in SS  
stainless steel 304 with  
different capacities and interchangablity provided with tray slide for ...  
With Different Size Available



## S/S LABORATORY WALL CABINET

With Hinged Door , Door with glass ,with different shelves

Dim : 1000 x 500 x 1500 MM HT

Price : 5000.00 SR

We have more different size as per  
Clint requirement Same item.

Consider: AISI304,18/10



# Our PRODUCTS

## S/S BIOLOGICAL LABORATORY SINK

This 16 Gauge Stainless Steel Biological Laboratory Sink is specifically designed to provide a solid work surface and washing area while still providing adequate floor space. Our Laboratory Sinks are built using high quality, corrosion resistant, stainless steel construction. This lab sink workstation is available with a swivel gooseneck faucet with wing handles as well heavy duty leveling feet. An optional 4" back splash is available along with a strong and durable stainless steel square tubing frame.

Dim : 1000 x 700 x 900 mm ht 14 Ga. 304 Stainless Steel Top w/Brushed Finish Powder Coated Frame



## STAINLESS STEEL TROUGH

### LABSS™ STAINLESS STEEL LAB FURNISHINGS

With a large trough style sink comprising the primary makeup of this stainless steel trough, it is capable of containing large parts, or large quantities of material, for baths or parts soaking. G2's stainless steel Trough is built to stand up to rigorous use in environments such as wet labs, biotech facilities, or even museum labs for preserving artifacts. Using heavy-duty 304 stainless steel construction and a bright brushed finish, this stainless steel Trough will meet your specific lab needs and has a clean, modern look.



## LABORATORY SCRUBBING SINK

### LABSS™ STAINLESS STEEL LAB FURNISHINGS

With a large trough style sink comprising the primary makeup of this stainless steel trough, it is capable of containing large parts, or large quantities of material, for baths or parts soaking. G2's stainless steel Trough is built to stand up to rigorous use in environments such as wet labs, biotech facilities, or even museum labs for preserving artifacts.

Using heavy-duty 304 stainless steel construction and a bright brushed finish, this stainless steel Trough will meet your specific lab needs and has a clean, modern look.



## FLOOR MOUNT CLEAN SINK WITH FOOT PEDALS

### LABSS™ STAINLESS STEEL LAB FURNISHINGS

This 16 Gauge Stainless Steel sink is built with a heavy-duty floor mounted base tubular frame. The four-station design is ideal for frequent use areas where high capacity wash stations are needed. Veterinary schools and other university labs, as well as health care facilities and Pharmaceutical Laboratories are just a few environments well suited for this Floor Mounted Sink. The 304 Stainless Construction is corrosion resistant, easy to clean, and prevents the development of germs and bacteria.





# Our PRODUCTS

## LABORATORY CASE WORK CABINET SINK LABSS™ STAINLESS STEEL LAB FURNISHINGS

A true multitasking piece of technical Furniture, this Stainless Steel cabinet sink offers a balance of workspace functionality as well as storage for lab materials and equipment. Our casework Cabinet is perfectly suited for environments such as biotech research facilities, and chemical laboratories. Constructed entirely of 304 series Stainless Steel, this cabinet resists corrosion as well as the development of bacteria making it ideal for wet labs.



## HAND WASH SINK w/SOAP DISPENSER SINGLE LabSS™ Stainless Steel Lab Furnishings

Our Single Hand Wash Sink is ideal for installation in tight spaces in labs, research and development facilities, or healthcare facilities. Its simplistic design and features make it easy to use and install. This sink has all the basic features needed for a wash area or pre-op scrub. Its clean Stainless construction makes it suitable for many different environments such as biochemistry Labs, pharmaceutical research facilities, or various health care facilities.



## SINGLE DEEP SINK LAB SPLIT UNDERSHELF LABSS™ STAINLESS STEEL LAB FURNISHINGS

This lab sink table is shown with optional dual split under shelves that allow for placement of an extra deep sink in the center of the table. With these available options the lab sink can be used for rinsing, to allow complete submersion of larger items in a parts bath, or to simply contain spillage or overflow in large beakers or other containers.



## ENDURASTEEL™ STAINLESS STEEL TABLE LABSS™ STAINLESS STEEL LAB FURNISHINGS

G2's EnduraSteel tables are constructed entirely of heavy gauge Stainless Steel. Designed for superior durability and strength, this Table is intended for intensive use in laboratories and other scientific research facilities. This table is large enough for Storage space of items such as sampling supplies with room on the work surface for simultaneous use of microscopes and various other sampling equipment.



# Our PRODUCTS

## **STAINLESS STEEL TABLE WITH CASTERS LABSS™ STAINLESS STEEL LAB FURNISHINGS**

This Table is perfect for storing or transferring heavy and bulky equipment such as sampling pumps from storage areas to the lab. With the optional full under shelf heavier items can be kept below the work surface and Storage capacity is doubled. Like all of our tables, this one is built with full stainless construction and is fully TIG welded. The top is heavy gauge 304 series Stainless Steel as well as the square tubing frame, and both have an attractive brushed finish. Swivel locking casters come standard, which allows for easy moving of the table when transferring from one location to another.



## **LABSS™ STAINLESS LABORATORY SINK TABLE LABSS™ STAINLESS STEEL LAB FURNISHINGS**

This 16 Gauge Stainless Steel LabSS Laboratory Sink Table is perfect for use in a wet lab. The large work surface next to the sink provides plenty of room for items such as beakers and other containers. The 304 Stainless top is corrosion resistant and easy to keep clean. Standard features include solid Stainless Steel top with built in sink, heavy-duty Stainless TIG welded frame and leveling feet.



## **PHARMACEUTICAL SUPPLY RACK & STORAGE LabSS™ Stainless Steel Lab Furnishings**

G2's supply rack is constructed entirely of heavy gauge Stainless Steel. The two large Shelves are available as shown with optional bull nose front flanges for safety and a clean look. This rack is ideal for storing large or heavy items such as baths, centrifuges, or microscopes and other analytical equipment. Custom sizing is available as well as railings, casters, and additional Shelves.



## **DOUBLE DRAWER STAINLESS STEEL TABLE LABSS™ STAINLESS STEEL LAB FURNISHINGS**

This Table is another one of our highly functional Workstation options for laboratories in numerous industries such as biotech, Chemical, or pharmaceutical. The dual drawers are ideal for out of the way storage of lab supplies and accessories when not in use. The table is built of 304 Stainless Steel that is easy to keep clean and is corrosion resistant for rigorous use in laboratory settings.



# Our PRODUCTS

## LABORATORY SINK TABLE ROUND LEGS LAB STAINLESS STEEL LAB FURNISHINGS

This Table uses the same design as our Biological Laboratory Sink but incorporates round tubing legs to cut down on blunt edges for safety. Our Laboratory Sink Table with Round Legs is shown with an optional drawer, under shelf, and back and side splashes for increased functionality in a specific setting. This 16 Gauge Stainless Steel Laboratory Sink is specifically designed to provide a solid work surface and washing area while still providing adequate floor space. Our Laboratory Sink are built using high quality, corrosion resistant, Stainless Steel construction.



## OPERATING ROOM CASE CARTS LABSS™ STAINLESS STEEL LAB FURNISHINGS

If you are looking for a lower profile Surgical Case Cart, but don't want to sacrifice storage capacity, our Double Door Surgical Case Cart is your answer. With a low overall height and double full swing out doors, this cart is easy to maneuver and work with. G2's entire line of Case Carts feature Stainless Steel construction, high-grade hardware components like Stainless Steel Hinges and latch, Gasket Sealed Doors for clean storage, Heavy Duty Casters, Wrap Around Bumpers, and sound deadened panels for quiet operation. Those are just some of the easy to use, work simplifying features offered. A few of the options for this cart include Fixed Shelves, Roll Out Shelves, and front Drop Leaf Extended Work Surface.



## 3 DOOR SURGICAL INSTRUMENT CABINET LABSS™ STAINLESS STEEL LAB FURNISHINGS

Clean, organized storage of instruments and equipment is critical in any medical or research environment. This cabinet was designed with those concepts in mind. The design allows for large quantities of instruments and small equipment to be stored all on easy to access stainless steel pull out trays in a dust resistant environment. Items such as surgical packs, analytical supplies and accessories, beakers, vials and various other types of lab equipment can be kept well organized and clean.



## 3 DOOR SURGICAL INSTRUMENT CABINET LABSS™ STAINLESS STEEL LAB FURNISHINGS

At G2 we understand the need for high-quality storage systems for industries such as research and development, biotech, pharmaceutical, and the medical field. This medical cabinet is built for rigorous use and features heavy-duty stainless steel construction with a clean brushed finish. The durable stainless frame is built around 6 large drawers that can be used for storage of documents, surgical supplies, and various medical equipment and accessories.



# Our PRODUCTS

## **DOUBLE DOOR STAINLESS STEEL CABINET** **LabSS™ Stainless Steel Lab Furnishings**

Pharmaceutical labs, medical facilities, and numerous other research industries require safe, clean, storage and technical furniture. G2 offers top quality stainless steel equipment and furniture to meet the rigid requirements of these high profile industries. This cabinet features a large storage space, double doors, and is designed for in-wall installation making it suitable for a variety of environments. A stainless steel body and doors are complimented by heavy-duty hardware components.



## **MODULAR STAINLESS DOUBLE DOOR CABINETS** **LABSS™ STAINLESS STEEL LAB FURNISHINGS**

Molded plastic and particleboard cabinets aren't easy to keep clean and don't stand up to heavy use due to warping and cracking. For a reliable, high-quality alternative, we offer our modular double door cabinets. Constructed entirely of heavy gauge stainless steel, these cabinets are suitable for various critical environments such as test facilities, research centers, operating rooms and many more.



## **SURGICAL PASS THRU CABINET W/DRAWERS** **LABSS™ STAINLESS STEEL LAB FURNISHINGS**

This stainless pass through was designed for the transfer of important items to and from contained environments such as operating rooms or specialized labs. The pull out drawer style trays allow for delivery of numerous items, from prepping and safety components and other surgical supplies without entering the room.



## **STAINLESS LABORATORY PASS THROUGH** **LABSS™ STAINLESS STEEL LAB FURNISHINGS**

G2's Ventilated Pass Through offers all of the high quality features as our other numerous stainless steel Pass Throughs, but with the added protection and functionality of ULPA filtration of the air inside the pass through. Ultra-Low Penetration Aerosol filters have an efficiency of 99.9999%, capturing particles half the size of those trapped by a standard HEPA filter.



# Our PRODUCTS

## CLEANROOM CABINET PASSTHROUGH LabSS™ Stainless Steel Lab Furnishings

This Pass Through is manufactured with high quality Type 304 No 3 Brushed Stainless Steel. This single wall constructed model can be manufactured in a variety of different materials (see options below). A semiconductor clean room is an environment, typically used in manufacturing or scientific research, that has a low level of environmental pollutants such as dust, airborne microbes, aerosol particles and chemical vapors. More accurately, a clean room has a controlled level of contamination that is specified by the number of particles per cubic meter at a specified particle size. To give perspective, the ambient air outside in a typical urban environment contains 35,000,000 particles per cubic meter, 0.5  $\mu\text{m}$  and larger in diameter, corresponding to an ISO 9 clean room.



## STAINLESS STEEL LAB CHEMICAL CART LABSS™ STAINLESS STEEL LAB FURNISHINGS

G2 Specializes in Acid/Corrosive Transport Carts and this Stainless Steel Model adheres to today's most demanding manufacturing and laboratory requirements. Every product we make stands up to the most strict clean room & safety requirements. This cart features full stainless steel construction with dual storage bins.

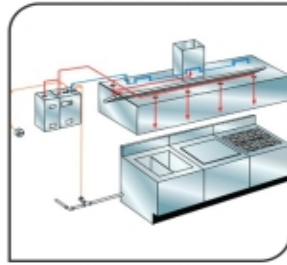
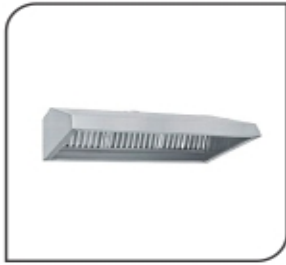
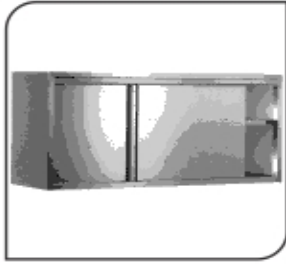
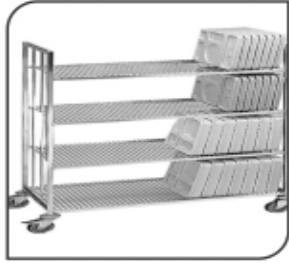


## OPERATING ROOM CASE CARTS LABSS™ STAINLESS STEEL LAB FURNISHINGS

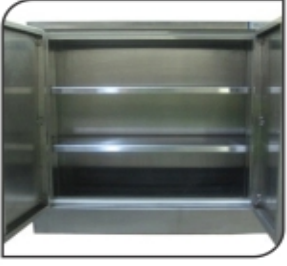
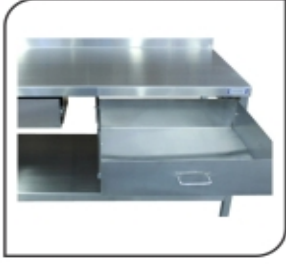
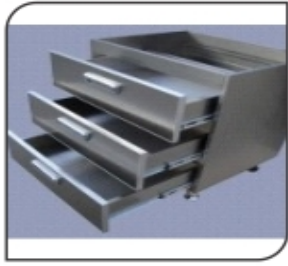
If you are looking for a lower profile Surgical Case Cart, but don't want to sacrifice storage capacity, our Double Door Surgical Case Cart is your answer. With a low overall height and double full swing out doors, this cart is easy to maneuver and work with. G2's entire line of Case Carts feature Stainless Steel construction, high-grade hardware components like Stainless Steel Hinges and latch, Gasket Sealed Doors for clean storage, heavy duty Casters, Wrap Around Bumpers, and sound deadened panels for quiet operation. Those are just some of the easy to use, work simplifying features offered. A few of the options for this cart include Fixed Shelves, Roll Out Shelves, and front Drop Leaf Extended Work Surface.



# Our PRODUCTS



# Our PRODUCTS





*Contact US*



**Modern Street Est**

Adding Life To Kitchen

Riyadh-Saudi Arabia

966-59-918-5334

[info@modernstreetest.com](mailto:info@modernstreetest.com)

[www.modernstreetest.com](http://www.modernstreetest.com)

[www.modernstreetest.com](http://www.modernstreetest.com)