

MODERN STREET EST.



❖ Fabrication Division



CUSTOM METAL
FABRICATION

Learn More About Our Capabilities [▶](#)

MODERN STREET EST.



- ❖ Stainless Steel, Mild Steel and Aluminum Commercial Base Cabinet's



MODERN STREET EST.



- ❖ Stainless Steel, Mild Steel and Aluminum Commercial Base Cabinet's



Drju

توتا تبي؟ B

متلا س؟



MODERN STREET EST.



- ❖ Stainless Steel, Mild Steel and Aluminum Commercial Wall Cabinet's



MODERN STREET EST.



- ❖ Stainless Steel, Mild Steel and Aluminum Commercial Wall Cabinet's



MODERN STREET EST.



- ❖ Stainless Steel, Mild Steel and Aluminum Commercial Wall Cabinet's



MODERN STREET EST.



- ❖ Stainless Steel, Mild Steel and Aluminum Commercial Working Table



- ❖ Working Table with Under shelve & Back splash



- ❖ Working Table with 3-Shelves



- ❖ Working Table with Under shelve

MODERN STREET EST.



- ❖ **Stainless Steel, Mild Steel and Aluminum Commercial Working Table**



- ❖ **Corner Working Table with Under shelve & Back splash**



- ❖ **Working Table with under shelve & caster wheel's**

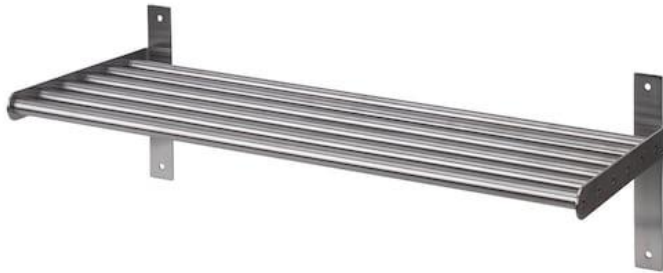


- ❖ **Working Table**

9 MODERN STREET EST.



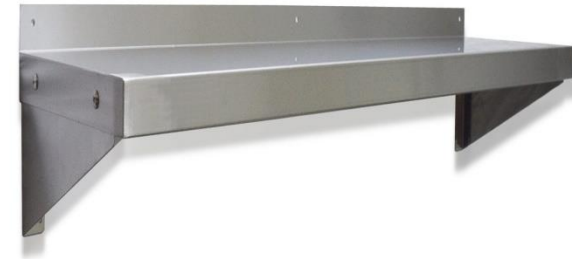
- ❖ Stainless Steel, Mild Steel and Aluminum Commercial Wall Shelf



❖ Grundtal Wall Shelf



❖ Heavy Duty Wall Mount Shelf

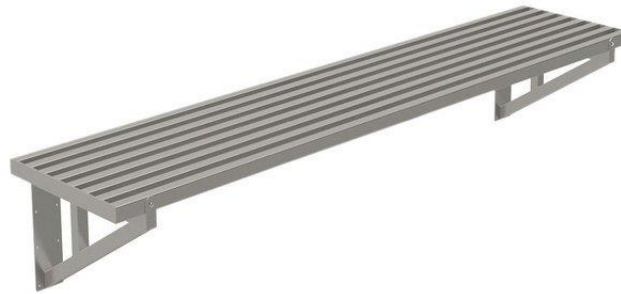


❖ Solid Wall Shelf

MODERN STREET EST.



- ❖ **Stainless Steel, Mild Steel and Aluminum Commercial Wall Shelf**



- ❖ **Wall Mount Microwave Shelf**

- ❖ **Advance Heavy Duty Wall Mount Shelf**

- ❖ **Adjustable Wall Mount Shelf**

MODERN STREET EST.



❖ Stainless Steel, Mild Steel and Aluminum Commercial Shelf Rack



MODERN STREET EST.



- ❖ **Stainless Steel, Mild Steel and Aluminum Commercial Shelf Rack**



- ❖ **4- Tier Storage Shelves**



- ❖ **Heavy Duty Garage Storage Adjustable Shelve**



- ❖ **Commercial Restaurant's Storage Shelve**

MODERN STREET EST.



❖ Stainless Steel Morgue

Three rows cold rooms for 9 bodies, with 3 doors



MODERN STREET EST.



❖ Stainless Steel, Mild Steel Commercial Locker



MODERN STREET EST.



❖ Stainless Steel, Mild Steel Commercial Locker



MODERN STREET EST.



- ❖ Stainless Steel, Mild Steel and Aluminum Commercial Shelf Rack



- ❖ Knee Operator Hand Wash Sink



- ❖ Single Bowl Wall Hung Hand Wash Sink



- ❖ Giantex S/S Hand Wash Sink

MODERN STREET EST.



❖ Stainless Steel, Medical scrub sink or Basin



MODERN STREET EST.



❖ Stainless Steel, Sink Cabinets



❖ Knee Operator Hand Wash Sink

❖ Single Bowl Wall Hung Hand Wash Sink

❖ Giantex S/S Hand Wash Sink

MODERN STREET EST.



❖ Stainless Steel, Sink Cabinets



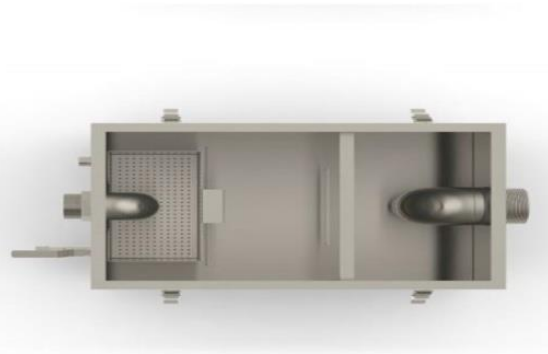
Powered by DiyTrade.com



MODERN STREET EST.



❖ Stainless Steel and Mild Steel Grace Trap



MODERN STREET EST.



❖ Stainless Steel Floor Drain



MODERN STREET EST.



❖ Stainless Steel Kitchen Exhaust Hood



❖ Condensate Hood



❖ Kitchen Double Exhaust Hood

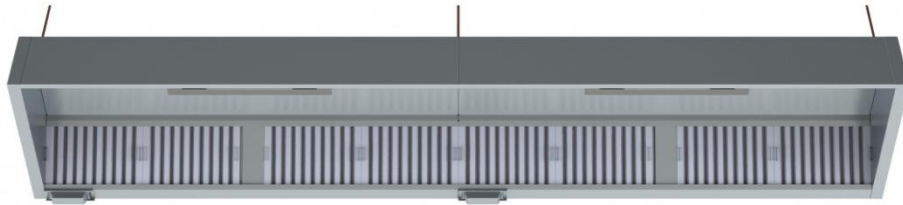
❖ Low Profile Exhaust Hood



MODERN STREET EST.



❖ Stainless Steel Kitchen Exhaust Hood



❖ Stainless Steel Single Exhaust Hood



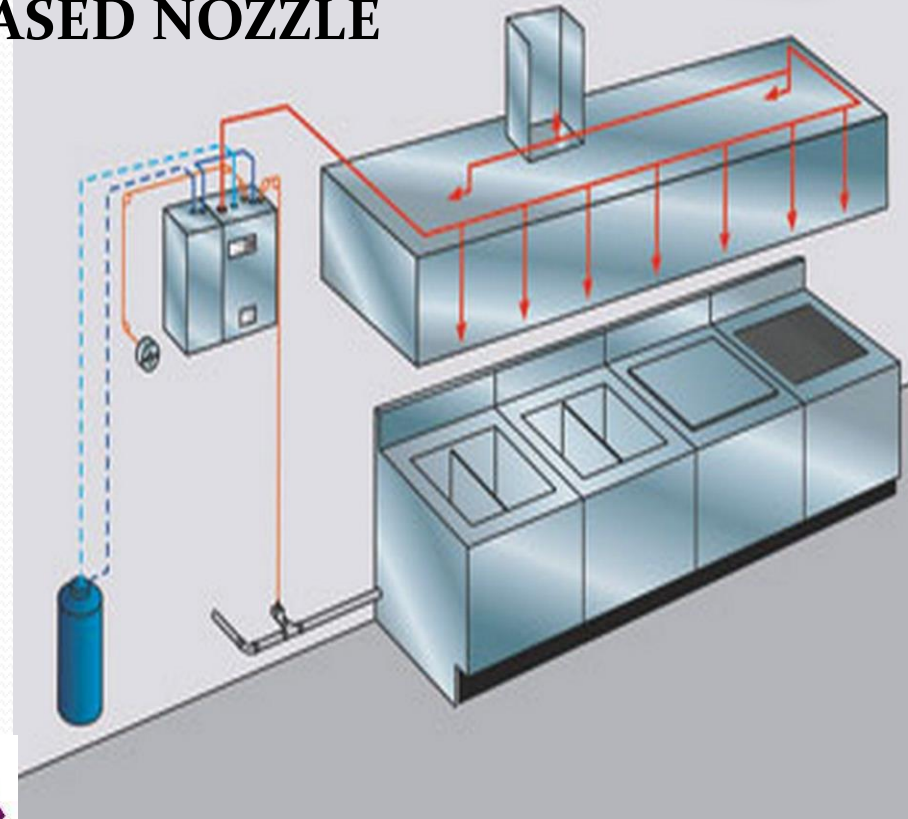
❖ Hood Without Ansil Double Skin Wall Type

MODERN STREET EST.



❖ PIRANHA DUAL AGENT RESTAURANT FIRE SUPPRESSION SYSTEM - INCREASED NOZZLE HEIGHTS

High proximity nozzles now offered with PIRANHA systems help to meet the need for more aesthetically pleasing cooking and dining environments. The new UL listed nozzle design allows appliance protection nozzles to be installed up to 84 in. (2133 mm) above the cooking hazard, nearly flush with the top of the hood, and out of view while providing the same reliable protection that PIRANHA systems have always offered.

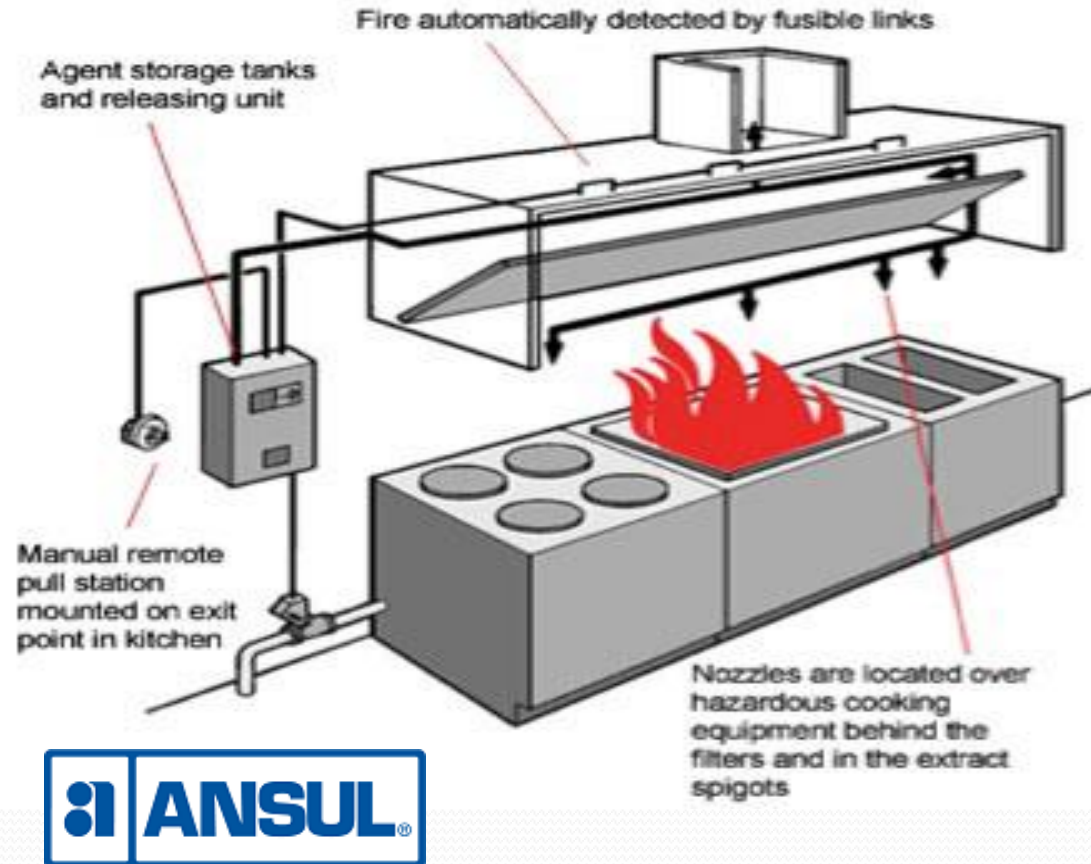


MODERN STREET EST.



❖ R-102 RESTAURANT FIRE SUPPRESSION SYSTEM

ANSUL products protect more food service kitchens from fire than any other brand. The R-102 Fire Suppression System incorporates a flexible design with an extremely effective ANSULEX Low pH Liquid Agent. ANSULEX quickly knocks down flames and cools hot surfaces, while generating a tough vapor securing blanket that helps prevent re-flash.



MODERN STREET EST.



❖ Stainless Steel, Mild Steel and Aluminum Commercial Shelf Rack



❖ Tray Rack Trolley



❖ Rack Trolley



❖ RACK TROLLEY

MODERN STREET EST.



❖ SERVICE TROLLEY



❖ 2-Tier Trolley



❖ 3-tier Food Trolley



❖ 3-Tier TROLLEY

MODERN STREET EST.



❖ Stainless Steel, Mild Steel and Aluminum Plate Form trolley



❖ Folding Plate Form Trolley

❖ Plate Form Trolley

❖ Plate Form Trolley

MODERN STREET EST.



❖ Stainless Steel, Mild Steel and Aluminum Plate Form trolley



❖ Single Big Bowl Sink



❖ BIG BOWL TROLLEY

MODERN STREET EST.



❖ Stainless Steel, Mild Steel and Aluminum Ladder



MODERN STREET EST.



❖ Stainless Steel, Mild Steel and Aluminum Water Bottle Stand



MODERN STREET EST.



❖ Stainless Steel, Mild Steel and Aluminum Pallet



MODERN STREET EST.



❖ Stainless Steel and Mild Steel Pallet Cage



MODERN STREET EST.



❖ Stainless Steel and Mild Steel Door's



❖ Sliding Door's



❖ Swing Double Door



❖ Swing Double Door

MODERN STREET EST.



❖ Stainless Steel and Mild Steel



❖ Cutlery Stand

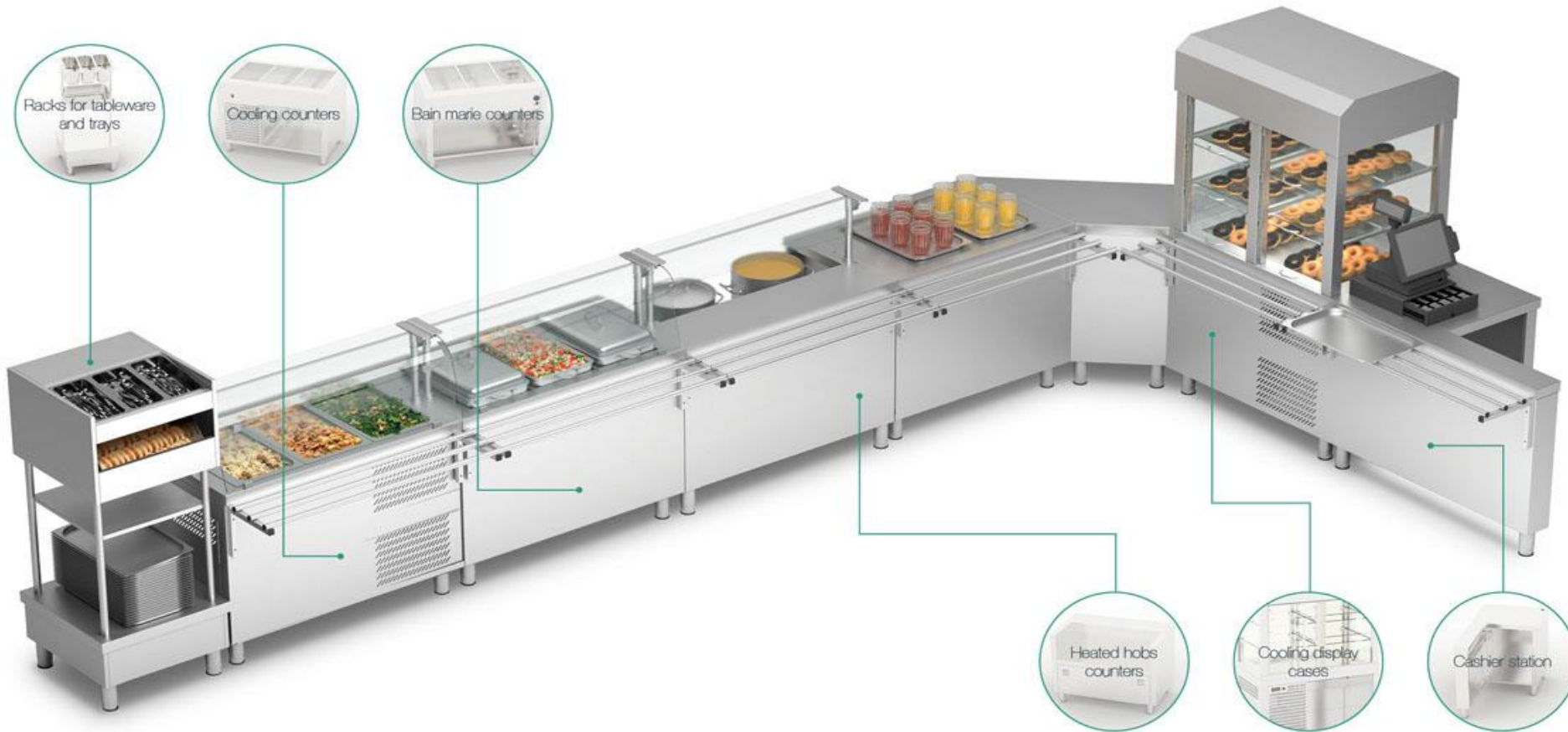


❖ Tray Holding Trolley



❖ Heavy Duty Aluminum Glass Rack Dolly with Handle

MODERN STREET EST.



MODERN STREET EST.



❖ **Cutlery Counter**

It is equipped with the following
3 gastronorm containers GN-1/3 65 for knives, forks, spoons
1 gastronorm container GN-1/1 with depth 150 mm for bread
Adjustable struts are made of stainless steel
Length (mm) 620
Depth (mm) 600
Height (mm) 1400



❖ **Cooling Sales Counters Orest**

Has a cooling bowl, witch may have different depths determined by service mode. Depending on the selected method of service of the counter can be used in different ways with GN of install products for distribution or plates with dishes and glass with drinks and sour cream.



MODERN STREET EST.



❖ **Cutlery Counter**

These steam tables enable to arrange continuous Process of dishes serving with out any need of its Additional heating. Steam tables also perform Function of display cases and demonstrate all the Assortment of offered dishes to the clients.



❖ **Heat Counter For First Courses**

characteristics: electric power 0.75 kW; overall dimensions - length 40 cm, height 47 cm, width: 76 cm;
pros: the presence of a thermostat to vary the temperature from 30 to 85 degrees;
cons: need to connect to electricity, water supply system.



MODERN STREET EST.



❖ Neutral Unit

They are used for demonstration and serving of the ready dishes variety that don't require heating or cooling as well as for installation of the auxiliary equipment for examples for example tea dispensers soup tureens water heaters and etc.

Length (mm) 1000

Width (mm) 700

Height (mm) 850/1400

❖ Angle Elements

They are used when it is necessary to turn the food service counter right or left while assembling.



MODERN STREET EST.



❖ Neutral Unit

Completely made of stainless steel. From the buyer rotary flap for easy access to the dishes showcase by staff sliding sash to replenish the Contents of shelves fully glazed transparent top all in the mind LED backlight



MODERN STREET EST.



❖ Standard Fire Station Wall Mount Lockers

GearGrid's Wall Mount Lockers are the strongest and most versatile line of fire lockers available. Our patented design promotes maximum air movement, which minimizes odor build-up and allows damp items to dry faster.



❖ Angle Elements

Fully-framed all-welded Hollow-T construction, 13 gauge 1/2" fully-framed flattened expanded metal sides, 18 gauge solid back, 16 gauge galvaneal bottom.

Doors: Optional Door 14 gauge galvaneal sheet steel. Padlock Strike Plates are optional.

