

**The Best
Quality**



NILKANTH DIAM

In the radiant landscapes of Gujarat, Nilkanth Diam emerged in 2013 as a distinguished manufacturer and supplier, synonymous with the epitome of excellence in diamonds and diamond jewelry. Steeped in tradition and innovation, Nilkanth Diam has become a beacon of quality craftsmanship, offering a wide array of exquisite diamonds and finely crafted jewelry. Our Legacy of Precision and Elegance At Nilkanth Diam, our legacy is a testament to the pursuit of precision and elegance. Since our establishment, we have dedicated ourselves to the art of crafting diamonds that transcend time and trends.

www.nilkanthdiam.in

About Us

In the radiant landscapes of Gujarat, Nilkanth Diam emerged in 2013 as a distinguished manufacturer and supplier, synonymous with the epitome of excellence in diamonds and diamond jewelry. Steeped in tradition and innovation, Nilkanth Diam has become a beacon of quality craftsmanship, offering a wide array of exquisite diamonds and finely crafted jewelry.

Our Legacy of Precision and Elegance

At Nilkanth Diam, our legacy is a testament to the pursuit of precision and elegance. Since our establishment, we have dedicated ourselves to the art of crafting diamonds that transcend time and trends. Our commitment to excellence extends to every facet of our operations, from sourcing raw materials to the creation of breathtaking diamond jewelry.



Exquisite Diamonds for Every Occasion

Explore our expansive collection of diamonds, each a radiant testament to the natural beauty and brilliance that only carefully selected gemstones can offer. From timeless classics to contemporary designs, Nilkanth Diam curates diamonds that add an unmistakable sparkle to every occasion.

Crafting Dreams with Diamond Jewelry

Nilkanth Diam isn't just a purveyor of diamonds; we are creators of dreams. Our diamond jewelry collection is a symphony of design, craftsmanship, and passion. From intricately designed rings to exquisite necklaces, every piece tells a unique story, making it a cherished addition to your collection.

Quality Assurance and Ethical Practices

Quality is the cornerstone of Nilkanth Diam's philosophy. We adhere to the highest industry standards, ensuring that each diamond undergoes rigorous inspection and certification. Our commitment to ethical practices is unwavering, guaranteeing that every Nilkanth Diam creation is a symbol of not just beauty but also responsibility.

Customer-Centric Approach

At Nilkanth Diam, we understand that every customer is unique. Our customer-centric approach ensures a personalized experience, guiding you through the process of selecting the perfect diamond or jewelry piece. We take pride in building lasting relationships with our clients, based on trust, transparency, and a shared love for extraordinary craftsmanship.

Your Trusted Partner in Diamonds

Nilkanth Diam invites you to explore the world of exceptional diamonds and exquisite jewelry. Whether you seek a dazzling gemstone for a special occasion or a timeless piece to cherish for a lifetime, we are your trusted partner in transforming moments into memories.

Contact Us Today

Embark on a journey with Nilkanth Diam. Contact us today to explore our curated collection of diamonds and diamond jewelry. Welcome to a world where brilliance knows no bounds – welcome to Nilkanth Diam, where every diamond is a story waiting to be told.



Diamond Products

Emerald Cut Diamond

DIAMOND TYPE : LAB GROWN DIAMOND
COLOR : D-I
CLARITY : IF-SI1
CERTIFICATE : CERTIFIED OR NON CERTIFIED



Heart Shape Lab Grown Diamond

DIAMOND TYPE : LAB GROWN DIAMOND
COLOR : D-I
CLARITY : IF-SI1
CERTIFICATE : CERTIFIED OR NON CERTIFIED



Pear Cut Diamond

DIAMOND TYPE : LAB GROWN DIAMOND
COLOR : D-I
CLARITY : IF-SI1
CERTIFICATE : CERTIFIED OR NON CERTIFIED



Princess Cut Diamond

DIAMOND TYPE : LAB GROWN DIAMOND
COLOR : D-I
CLARITY : IF-SI1
CERTIFICATE : CERTIFIED OR NON CERTIFIED



Radiant Cut Loose Diamond

DIAMOND TYPE : LAB GROWN DIAMOND
COLOR : D-I
CLARITY : IF-SI1
CERTIFICATE : CERTIFIED OR NON CERTIFIED



Round Cut Diamond

DIAMOND TYPE : LAB GROWN DIAMOND
COLOR : D-I
CLARITY : IF-SI1
CERTIFICATE : CERTIFIED OR NON CERTIFIED



Diamond Jewellery



Diamond Bangle

METAL	:	GOLD (14KT,18KT)
COLOR	:	ROSE, WHITE , YELLOW
DIAMOND	:	LAB GROWN DIAMOND

Diamond Bracelets

METAL	:	GOLD (14KT,18KT)
COLOR	:	ROSE, WHITE , YELLOW
DIAMOND	:	LAB GROWN DIAMOND



Flower Diamond Tennis Bracelet

METAL	:	GOLD (14KT,18KT)
COLOR	:	ROSE, WHITE , YELLOW
DIAMOND	:	LAB GROWN DIAMOND



Princess Cut Diamond Tennis Bracelet

METAL	:	GOLD (14KT,18KT)
COLOR	:	ROSE, WHITE , YELLOW
DIAMOND	:	LAB GROWN DIAMOND



Diamond Jewellery

Round Cut Diamond Tennis Bracelet

METAL	:	GOLD (14KT,18KT)
COLOR	:	ROSE, WHITE , YELLOW
DIAMOND	:	LAB GROWN DIAMOND



2 In 1 Diamond Pendant Set

METAL	:	GOLD (14KT,18KT)
COLOR	:	ROSE, WHITE , YELLOW
DIAMOND	:	LAB GROWN DIAMOND



Diamond Earring Pendant Set

METAL	:	GOLD (14KT,18KT)
COLOR	:	ROSE, WHITE , YELLOW
DIAMOND	:	LAB GROWN DIAMOND



Flower Shape Diamond Pendant

METAL	:	GOLD (14KT,18KT)
COLOR	:	ROSE, WHITE , YELLOW
DIAMOND	:	LAB GROWN DIAMOND



3 Diamond Solitaire Ring

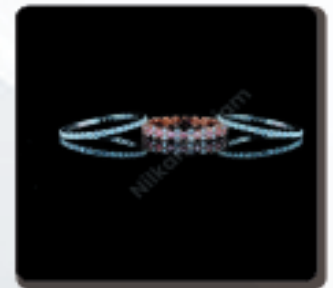
METAL	:	GOLD (14KT,18KT)
COLOR	:	ROSE, WHITE , YELLOW
DIAMOND	:	LAB GROWN DIAMOND



Diamond Jewellery

3 in1 Diamond Engagement Ring

METAL	:	GOLD (14KT,18KT)
COLOR	:	ROSE, WHITE , YELLOW
DIAMOND	:	LAB GROWN DIAMOND



Diamond Halo Ring

METAL	:	GOLD (14KT,18KT)
COLOR	:	ROSE, WHITE , YELLOW
DIAMOND	:	LAB GROWN DIAMOND



Diamond Toti Et Moi Ring

METAL	:	GOLD (14KT,18KT)
COLOR	:	ROSE, WHITE , YELLOW
DIAMOND	:	LAB GROWN DIAMOND



Diamond Wedding Ring & Band

METAL	:	GOLD (14KT,18KT)
COLOR	:	ROSE, WHITE , YELLOW
DIAMOND	:	LAB GROWN DIAMOND



Emerald Cut Diamond Eternity Ring

METAL	:	GOLD (14KT,18KT)
COLOR	:	ROSE, WHITE , YELLOW
DIAMOND	:	LAB GROWN DIAMOND



Diamond Jewellery

Flower Shape Diamond Ring

METAL	:	GOLD (14KT,18KT)
COLOR	:	ROSE, WHITE , YELLOW
DIAMOND	:	LAB GROWN DIAMOND



Ladies Diamond Ring

METAL	:	GOLD (14KT,18KT)
COLOR	:	ROSE, WHITE , YELLOW
DIAMOND	:	LAB GROWN DIAMOND



Oval Diamond Eternity Ring

METAL	:	GOLD (14KT,18KT)
COLOR	:	ROSE, WHITE , YELLOW
DIAMOND	:	LAB GROWN DIAMOND



Round Diamond Eternity Ring

METAL	:	GOLD (14KT,18KT)
COLOR	:	ROSE, WHITE , YELLOW
DIAMOND	:	LAB GROWN DIAMOND



Round Diamond Half Eternity Ring

METAL	:	GOLD (14KT,18KT)
COLOR	:	ROSE, WHITE , YELLOW
DIAMOND	:	LAB GROWN DIAMOND



Contact Us



NILKANTH DIAM

A-101, Parth Building, Jadakhadi,

Mahidharpura, Surat, Gujarat, India - 395003

Call Us : +91-9913246146, +91-9510109922

Email : nilkanthdiam@gmail.com

Web Address : www.nilkanthdiam.in

Web Page : www.exportersindia.com/nilkanthdiam

www.nilkanthdiam.in