



# ADVANCE MEDQUIPS



**SINGLE ROOF SOLUTION  
OF ALL  
HOSPITAL NEED  
ADVANCE MEDQUIPS**

# INDEX

OUR PROFILE

3

ABOUT US

4

OUR PRODUCTS

5-15

CONTACT US

16

# COMPANY PROFILE

Advance Medquips was set up in the year 1995 in Delhi (India). Since then, the company has been growing by leaps and bounds in the industry, under the competent guidance of MR Vijayant & Mr. Vikrant, one of the Partners of the enterprise. The company is thus named as a dynamic Medical Equipment Importer and Supplier in India.

Since 1995, Advance Medquips is specializing in the importing and supplying of Medical Equipment in all over India. The exclusive assortment of our Medical Equipment encompasses Medical Ventilators, Multi Parameter Patient Monitor, Refurbished Pulse Oximeters, Refurbished BiPAP, Infusion Pumps, Biphasic Defibrillator, Syringe Pump and 3 Channel ECG Machine. The company provides total solutions for all the requirements of the Medical industry in the form of new and refurbished pre-owned Medical Equipment.

The Medical Equipment is especially procured from the reputed vendors situated in China, Germany, USA, UK, etc. Our Medical Equipment is thoroughly tested for stringent quality parameters by a team of highly trained service engineers and professionals. Combining vast experience, technical expertise and sound business strategies, we have steadily grown over the years and have demonstrated the potential to become a major dealer for all Medical Equipment and its spares and accessories.





# ABOUT US

Advance Medquips was set up in the year 1995 in Delhi (India). Since then, the company has been growing by leaps and bounds in the industry, under the competent guidance of MR Vijayant & Mr. Vikrant, one of the Partners of the enterprise. The company is thus named as a dynamic Medical Equipment Importer and Supplier in India.

## Mission :

To consistently deliver good quality products followed by excellent services, in order to become the preferred Suppliers of new and refurbished Medical Equipment and achieve a leadership position in the industry.

## Team :

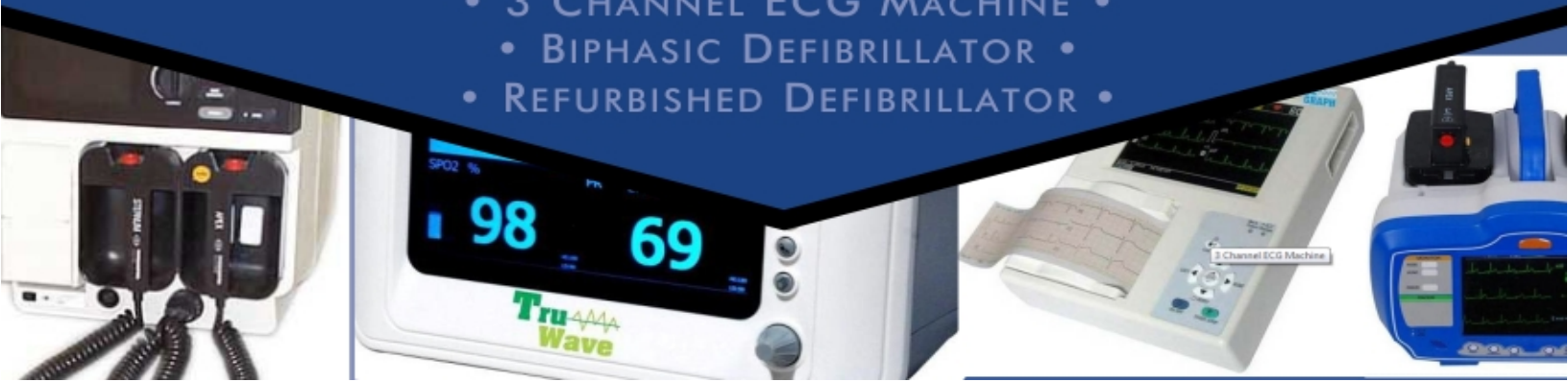
A team of well-trained engineers is available round the clock to provide total solutions to your requirements. Apart from this, we offer preventive maintenance contract at affordable terms. Our engineers are fully trained to enhance the skills of your staff at the time of installation. These engineers along with other team members endeavor to achieve 100% customer satisfaction by following ethical business practices.

## Quality Policy :

For Medical Equipment, our procuring agents select the vendors after conducting extensive market research. They do screen the vendors after critically evaluating several factors like market credibility, years of experience, quality control measures and industry knowledge. These professionals make sure that our vendors select the machines as per the defined quality standards. Further, Medical Equipment is also quality tested by our professionals for their performance, safety and efficiency, thus ensuring the flow of the best products to the markets.

## OUR RANGES OF PRODUCTS INCLUDE

- MEDICAL VENTILATORS •
- MULTI PARAMETER PATIENT MONITOR •
- REFURBISHED PULSE OXIMETERS •
- REFURBISHED BIPAP •
- SYRINGE PUMP •
- 3 CHANNEL ECG MACHINE •
- BIPHASIC DEFIBRILLATOR •
- REFURBISHED DEFIBRILLATOR •



# SKAN RAY PRODUCTS

## Invasive Monitors

- Star 90
- Star 55
- Star 50N

## Non - Invasive Monitors

- Planet 55
- Planet 50N
- Astral
- Comet Plus



## Channel ECG Machine

Orion is a 3 channel electrocardiogram machine which can print through the thermal printer(inbuilt) as well connect to a Personal Computer(PC) to give a PDF output. The device can acquire all the 12 leads simultaneously with an option to select 3 configurable leads for printout. The supporting software Orion View can be utilized to view the ECG's in a PC connected through the built-in USB interface.

### Features :

- Simultaneous Acquisition of all 12 leads at the rate of 1000 samples/sec/channel
- Formatted, Standard and Cabrera Operating Modes
- High Resolution Thermal Printer (Built-In)
- CMRR > 120 db
- Self Testing and Rhythm Lead Recorder
- Bluetooth Connectivity (Optional)



## Syringe Pump

SP 104 – Syringe pump with PCA option

- Automatic Syringe detection
- 5/10, 20/30, 50/60 ml syringe compatible
- Anti Bolus capable
- Flow rate from 0.1 ml / hr onwards
- 10 hrs battery back up
- PCA ( optional )

SP 204 - Syringe Pump with Drug Dose calculation & PCA option

- Sleekest & Lightest Pump in its category
- Automatic Syringe detection
- 2/3, 5/10, 20/30, 50/60 ml syringe compatible
- Anti Bolus capable
- Flow rate from 0.01 ml / hr onwards
- Drug Dose Calculation
- 10 hrs battery back up
- PCA ( optional )





# OUR PRODUCTS

## Signet 615

Signet 615 is an Advanced Anesthesia Delivery System With a 5 Tube backlit Rotameter. The machine has a robust fiber body structure and is aesthetically pleasing. The safety features incorporated into this machine include an Anti - Hypoxic Device and O2 Pressure Operated Pneumatic N2O Cutoff System. The auxiliary flow meter provides an instant source of O2 enrichment for the patient.

### **Ventilator - Advanced**

The Penlon AVS is an advanced Ventilator - with options of A/CMV, SIMV and PSV Modes. The ventilator has a display of graphs and loops for a quick indication on pulmonary compliance and resistance.

### **Ventilator - Basic**

The EV 600 is a Time cycled Pressure Controlled and Volume Preset Ventilator. It comes with an LCD Screen for the display of Waveform. The ventilator features a 4 hour battery backup and an inbuilt PEEP Adjustment function.

### **Circle Absorber**

Circle Absorber is available in 1KG and 2 KG Options. The Circle Absorber has a Bag-Vent Switch and an Option to Bypass.

### **Patient Monitor**

Star 55 or Star 90 Multiparameter Monitor can be integrated into this machine to provide continuous monitoring of patient's vital signs and gases. The Anaesthesia Gas Module automatically detects and measures the Et and Fi values of all 3 gases and 5 agents. These monitors come with a standard 2 invasive pressure monitoring lines and can support up to 4 invasive pressure monitoring lines.



## Skan Rad

A High Frequency fixed room RAD system along with bucky table and chest stand.

### **Features**

- Ergonomically designed low-friction Tube column
- Table for easy positioning and High Quality Radiographic Images
- Electromagnetic locking
- Floor grouting on rails with foot mount for convenience
- Vertical column with swivel mechanism
- Tube head arm with traverse and vertical movements
- Manual vertical bucky chest stand Console with display

### **Applications**

- Myelogram
- IVP (Intravenous Pyelogram)
- Chin Examination
- Barium Enema Diagnosis
- Extremities Examination
- Spine, Pelvis & Shoulder Examination
- Anteroposterior (AP) Application
- Posteroanterior (PA)



# OUR PRODUCTS

## System

SKAN RAD is a compact radiographic system composed of a patient examination table with wheels, a tube column fixed on rails, vertical bucky stand along with Skanray's high performance DC X-ray generator to deliver optimum performance and productivity.

## Design features

SKAN RAD is ergonomically designed with a low-friction tube column, light bucky table and a vertical chest with a bucky. The tubehead arm has smooth traverse and vertical movements and the vertical column has a swivel mechanism for easy positioning. The system incorporates a fail safe electromagnetic locking feature to ensure safety and has a dedicated sleek console which displays all control parameters for added convenience.

## Ease of Use

SKAN RAD provides complete diagnostic coverage of the patient with its smooth movements and extended reach. The controls are easy-to-use and are designed for quick operation for high patient throughput environments. The telescopic movement of the X-ray tube head with easy movement of the patient examination table enables quick radiographic applications.

## Variants

- Fixed RAD system with normal bucky table & chest stand
- Fixed RAD system with motorised bucky table

## Hospital Furniture



SKU : CH-BD5003  
Name : ICU BED MANUAL  
Category : Hospital Beds



SKU : CH-BD5005  
Name : Motorized ICU Bed  
Category : Hospital Beds



SKU : CH-BD5006  
Name : ICU 5 FUNCTION BED  
Category : Hospital Beds



SKU : CH-BD5111  
Name : FULL FOWLER  
BED (PREMIUM)  
Category : Hospital Beds



SKU : CH-BD5026  
Name : Attendant Bed /Sofa  
Category : Hospital Beds



SKU : CH-BD5005A  
Name : ICU BED 5 FUNCTION  
Category : Hospital Beds

# OUR PRODUCTS

## Hospital Furniture



SKU : CH-EC8001  
Name : Examination Table  
Category : Examination Table  
/Electric Chair



SKU : CH-ET8007  
Name : Examination Table  
Category : Examination Table  
/Electric Chair



SKU : CH-SC8116  
Name : Surgery Chair  
Category : Examination Table  
/Electric Chair



SKU : CH-BMW 4201  
Name : BIOMEDICAL WASTE  
TROLLEY  
Category : Biomedical Waste  
Management



SKU : CH-BMW4221  
Name : Biomedical waste Bin  
Trolley (Peddle All S.S.)  
Category : Biomedical Waste  
Management

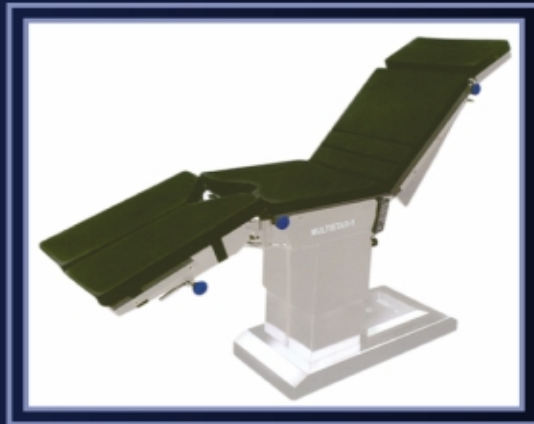


SKU : CH-BMW4211  
Name : Biomedical waste Bin  
Trolley  
Category : Biomedical Waste  
Management



# OUR PRODUCTS

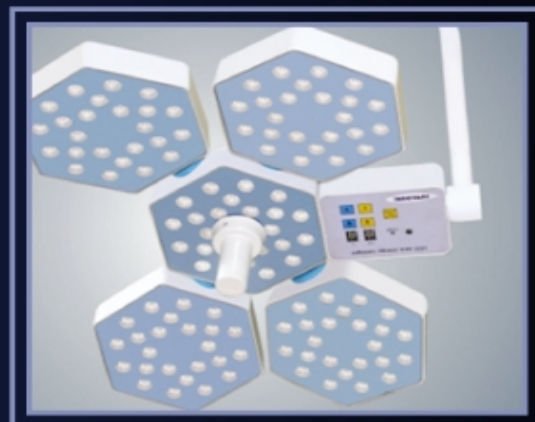
## Surgical Chair



## Operating Table Electrical



## Surgident OT LED Lights



# OUR PRODUCTS

## Refurbished Babylog Ventilator

The Refurbished Babylog Ventilator (8000 Plus) is designed for harmonious ventilation of small children and the smallest pre-term babies. Refurbished Babylog Ventilator has an advanced upgrade platform that has allowed it to keep pace with all new forms of treatment and clinical advances. Sensitive synchronization with gentle but precise support for spontaneous breathing reduces the work of breathing and makes the ventilation process much more comfortable for patients.

### TECHNICAL SPECIFICATIONS :

#### CONTROLS :

- Conventional ventilation : Continuous flow, Pressure-limited, time-cycled
- Triggered ventilation : SIMV, SIPPV, PSV1, leak adapted
- Trigger : Flow/Volume trigger, leak adapted
- Trigger delay : approx.40-60ms
- High frequency ventilation : C-PAP+HFV,IMV+HFV (Optional)
- Volume guarantee ventilation : SIMV+VG, PSV+VG
- Oxygen mixer loss



## Refurbished EVITA Ventilator

The Drager Evita 4 is a ventilator for every patient. The Refurbished EVITA Ventilator was designed to meet the demanding requirements of the ICU environment by improving the interactions between patient, ventilator, and clinicians. The functional touch screen continually provides the clinician information on ventilator settings, patient measurements and advanced trending capabilities which enhance the operation of the device. Unique features and modalities such as Auto Flow and APRV are standard on all EVITA 4 ventilators.

One Refurbished EVITA Ventilator for every patient population:-Neonatal, Pediatric, Adult- EVITA 4 can be used to ventilate any patient category, reducing the amount of staff training required and ensuring greater resource flexibility. The neonatal option, Neo Flow, offers flow measurement at the Y-Piece for precise volume and leak monitoring with accurate, responsive triggering to patient effort.



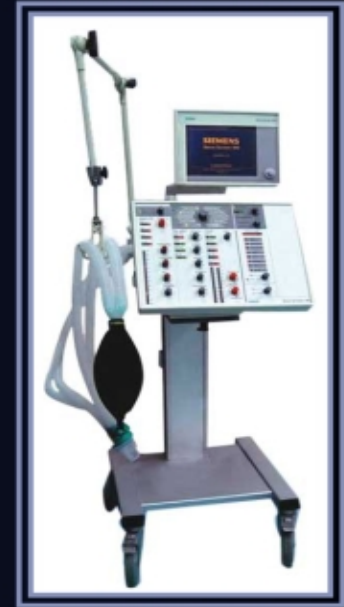
# OUR PRODUCTS

## Siemens Ventilator (300-300A)

We are a well-reckoned Siemens Ventilators (300-300A) Importer and Supplier in India. The Refurbished Siemens Ventilator offers a wide range of ventilation modes together with an automode function for greater treatment possibilities, shorter weaning times and increased patient comfort. The Siemens Ventilator can be availed from us at affordable prices.

### HIGHLIGHTS :

- Easy to use
- Neonatal to adult patient range
- Optional graphical display and compressor
- Siemens 300A Servo Ventilator
- Automode for fully adaptive patient interaction
- Wide range of ventilation modes such as controlled, supported, & combined

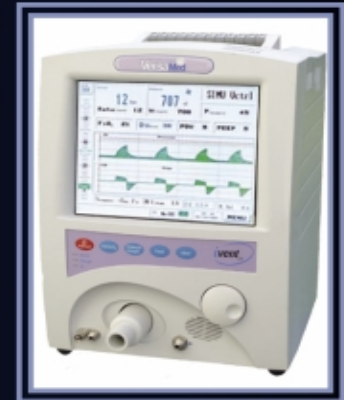


## Refurbished Versamed Ventilator

The iVent201 is a portable, computer controlled, electrically powered ventilator providing continuous or intermittent ventilatory support to patients requiring mechanical ventilation, as prescribed by an attending physician. The iVent201 features advanced software, electronic and mechanical technologies which, along with easy operation, provide effective and reliable ventilation. iVent 201 is a fully automatic Ventilator.

### Specifications :

- Ventilation Modes: Assist/Control (A/C), Volume Controlled (A/C Vctrl), Pressure Controlled (A/C Pctrl), Pressure Controlled (A/C Pctrl), Volume Controlled (SIMV Vctrl), Pressure Controlled (SIMV Pctrl), Continuous Positive Airway Pressure (CPAP), Pressure Support Ventilation (PSV), BiPAP
- Respiratory Rate: 1 to 12  $\pm$  1 bpm, 12 to 50  $\pm$  2 bpm
- Tidal Volume: 100 to 2000 mL
- Accuracy of Tidal Volume Delivery from the set value:  $\pm$  10% or  $\pm$  10 mL (whichever is greater)



## Refurbished BiPAP

The Refurbished BiPAP Pro with BI-Flex makes breathing easier and more natural for adult patients with obstructive sleep Apnea (OSA) who are having difficulty complying with continuous positive airway pressure therapy. BI-Flex technology "softens" the airflow in inhalation and exhalation to settings of 1, 2 or 3 to provide increased pressure relief, making breathing more comfortable for the patient. In the BiPAP mode, the comfort control feature establishes the time that the BiPAP pro takes to change from EPAP to IPAP.

Digital Auto Track Sensitivity automatically triggers the device to cycle between inspiratory and expiratory pressures based on the patient's breathing rhythm. Auto Track also compensates for any leaks that may occurs.





# OUR PRODUCTS

## Multi Parameter Patient Monitor

The company is chiefly engaged in the importing and supplying of Multi Parameter Patient Monitor all across the nation. The Multi Parameter Patient Monitor, offered by us, is especially procured from the reputed sources to ensure its reliability and consistent quality. Our Multi Parameter Patient Monitor is known for its accuracy and ease of operations.

### Details :

- 12.1" color TFT display
- ECG Full Lead
- Unique human voice alarm
- Maximum 720 hour graphic and tabular trends
- Maximum 12 hours of all waveforms
- Nurse Call Analog Output

Standard Configuration : ECG, RESP, NIBP, SOP2, PR, TEMP, HR

Optional : Touch Screen, IBP, 2IBP, EtCO2, Recorder, Fetal Monitor, WAN Communication function to network with central monitoring system and available for long distance monitoring, diagnosis and software upgrade.

### HIGHLIGHTS :

- Easy to use
- Neonatal to adult patient range
- Optional graphical display and compressor
- Siemens 300A Servo Ventilator
- Automode for fully adaptive patient interaction
- Wide range of ventilation modes such as controlled, supported, & combined



## Refurbished Pulse Oximeters

Our Refurbished Pulse Oximeters (Brand Name Nellcor) has an advanced digital signal processing, wherein multiple engines run simultaneously to read through motion artifact and low perfusion to quality pulses, sound a beep tone and calculate accurate saturation and pulse rate values. The N-595 Refurbished Pulse Oximeters has Nellcor's SatSeconds Alarms management technology, an innovative feature for managing nuisance alarms without sacrificing patient safety. The Refurbished Pulse Oximeters creates a communication link between the sensor and monitor that empowers the N-595 monitor to display valuable information to caregivers. The sensor messages function provides troubleshooting tips for optimal sensor application, and the sensor event report allows alarm event history to travel with the patient for quick assessment of various points of care.

Spo2 Range : 1% to 99%

Resolution : 1%

Accuracy : 70% to 99% range : +2%; 1% to 69% range : +3%

Method : dual wavelength led

### RULSE RATE

Rate : 30 to 250 bpm

Accuracy : +2bpm or +3%, whichever is great.

Display : tabular, graphical



### INTERFACE & DISPLAY

Keys : 4; membrane activated

Rotary knob : Push and rotate; 24 steps/turn

Screen : 7.0 inch active color Tft,

Resolution : 800 x 480 pixels

Waveforms : 2, maximum,

Waveform Types : Co2; pleth

### PHYSICAL PROPERTIES

Weight : 1.7kg

Size : 17.5 cm (H) x 23 cm (W) x 11 cm (D)

# OUR PRODUCTS

## Truwave Pulse oximetre

### Pulse Oximetry

SPO2 Range : 1% to 99%

Resolution : 1%

Accuracy : 70% to 99% range: #2%; 196 to 96% range

Method: Dual wavelength LED

### Pulse Rate

Rate : 30 to 250 bpm

Accuracy: 2bpm or 3%, whichever is great.

Display: tabular, graphical

### Interface & Display

Keys : 4, membrane activated

Rotary Knob: Push and rotate, 24 steps/turn

Screen: 7. inch active color TFT, Resolution: 800 x 480 pixels

Waveforms: 2, maximum, Waveform Types : CO2, Pleth

### Physical Properties

Weight: 1.7 kg

Size : 17.5 cm (H) x 23 cm (W) x 11 cm (D)



## Tru Drop Syringe Pump

We are ranked amidst the famous Syringe Pump Importers and Suppliers, located in India. The Syringe Pump, offered by us, is acclaimed amidst the clients for its efficient performance and reliability. Incorporating the modern technology, our Syringe Pump is high in demand amidst the nationwide clients.

### DETAILS :

Can display the infused volume

Speed rate unit : ml/h

Can display and preset the speed rate and value

With Bolus Rate (purge rate) function

Occlusion alarm pressure is function

Automatically recognizes the syringe type - 10ml, 20ml, 30ml, & 50ml

Possess temporarily clear up alarm function and recovers set time alarm function

Whenever speed rate is more than 0.1 ml/h after the preset volume alarms, it turns to KVO speed rate automatically

Display the accumulative infused volume Internal battery embedded



# OUR PRODUCTS

## ECG of Bionet

- Convenient A4 size print-outs allow for easy chart filling
- Copy function allows varied printouts from single patient sample
- Grid function allows you to use low cost plain fax paper
- One touch operation (monitoring recording mode)
- Accurate simultaneous 12 channel cardiac data acquisition

Output includes 3 / 6 / 12 channel printouts

Internationally recognized resting interpretation

algorithm, which provides reliable second

opinion for 12 lead ECG interpretation

PC Connectivity available

Free Software upgrades available from internet

Small, Portable and Easy to use

Built in 2x16 character LCD Display

Interpretive 12 Channel  
Resting ECG

## CardioCare 2000



## Biphasic Defibrillator

The company has emerged as a highly trusted Importer & Supplier of Biphasic Defibrillator. The Trugraph Biphasic Defibrillator, offered by the company, offered by the company, have been appreciated for their excellent design as well as easy data transfer. DE 7000 is a defibrillation device, which can meet your clinical needs from basic life support (BLS) to advanced Cardiac life support (ACLS).

### DISPLAY

Screen Type : High-resolution display

Screen Size : 7 Inches (17.7 cm) Diagonally

Sweep Speed : 25mm / sec

Information : Heart Rate, Lead / Pads, Alarm On / off,

Aed Function, prompts alarm selection limits & Delivered Energy.

### DEFIBRILLATOR

Waveform : Biphasic

Charge Time : Less than 7 seconds with a new fully charged battery.

Energy Display : Monitor display indicates both selected and delivered energy.

Charge prompt type : Voice and visual prompts.

Electrode Impedance Measurement Range : 0-250 ohms.





# OUR PRODUCTS

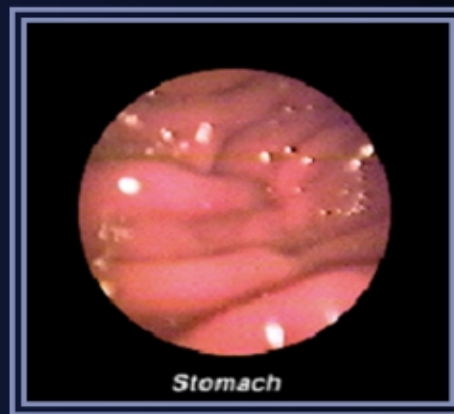
## Refurbished Defibrillator

The Refurbished Life Peak-9 Defibrillator includes high and low energy select, display annotating recorder that prints out time, date, leads, gain, and code summary critical event record (which recaps critical events from the moment "power on"). Optional defibrillation adapter is used with auxiliary pads for hands-free defibrillation.

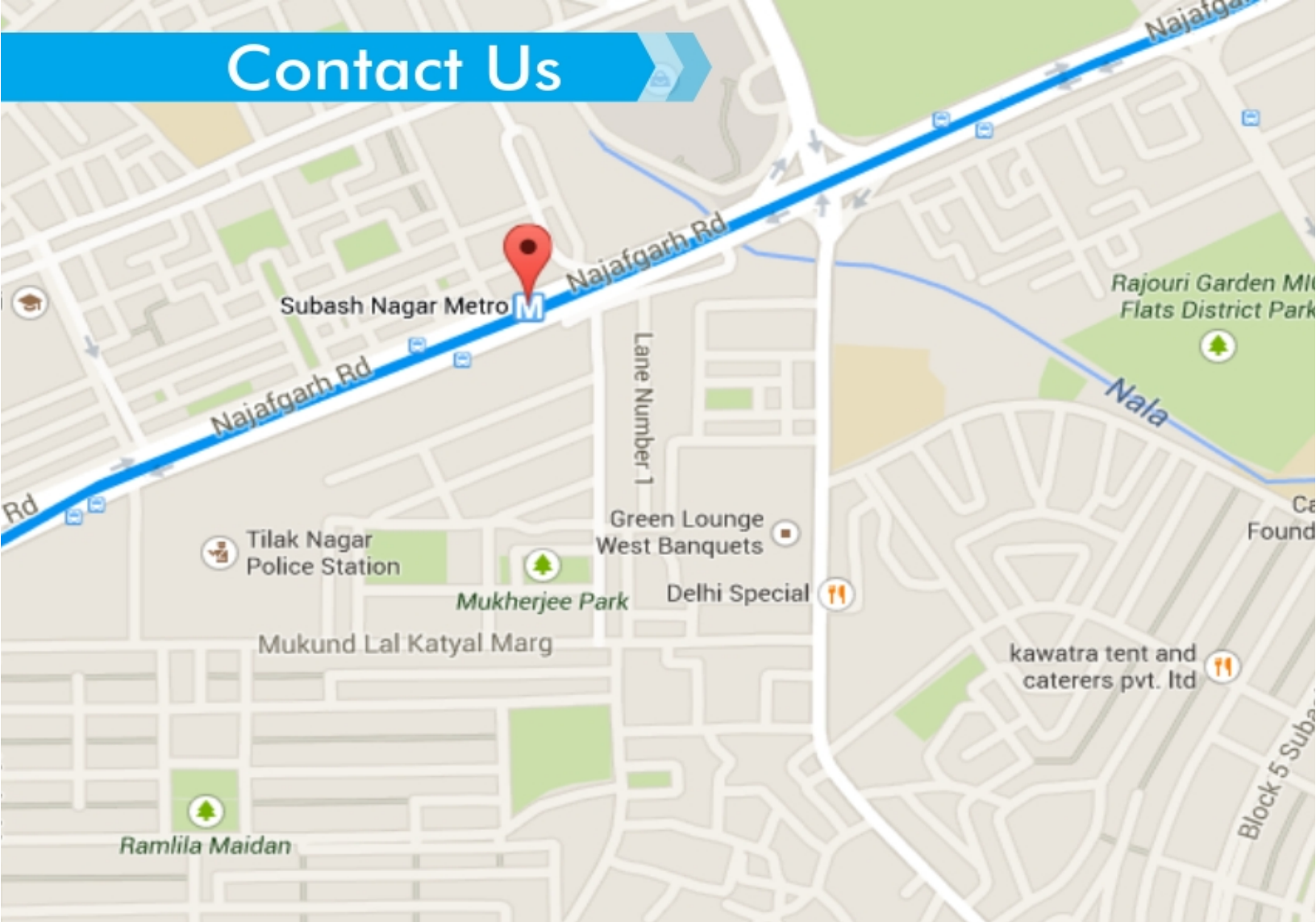
The Refurbished Defibrillator is designed for ease of maintenance with on-screen diagnostics for simple test and calibration. The Refurbished Defibrillator comes with Bio Certification. The Life Peak 9P Refurbished Defibrillator includes pacing. Our Refurbished Defibrillator is one of the most popular defibrillators and can be found in major hospitals and offices around the country.



## Refurbished Video Endoscop



## Contact Us



# ADVANCE MEDQUIPS

M - 34, First Floor, Sham Nagar,  
Near Subhas Nagar Metro Station,  
New Delhi- 110018, India

Branch Address : BLG - 1, Pushpa Complex,  
Delhi Road, Hisar, Haryana, India - 125005  
Mobile : +91-9896456475 / 9896446475