

Thrislington

DEMOUNTABLE OFFICE PARTITIONS



SOLID PARTITIONS | GLAZED PARTITIONS



INTRODUCTION

Thrislington Products Company Limited, UK excelling in various kind of doors and partitions since 1946 was taken over by the Synergy group in 2009. With this acquisition entire plant & machinery, product know how and all other intellectual property has come from UK to India at Synergy Thrislington.

Its state-of-the-art plant is located at Nalagarh tehsil of district Solan, Himachal Pradesh in India. The well laid out facility is spread over 4.5 acre land with the covered area of 85,000 Sq.feet

Strength of the company arises out of its team of professionals, product know how and inbuilt culture of customer care and delivery commitment.

Synergy Thrislington, an ISO - 9001:2008 certified company today serves varied paneling and door requirements to educational intitution, corporate offices, shopping malls, high rise building, pharmaceutical, healthcare, hospitality, labour accommodation, site offices, cold room/cold storage and prefabricated demountable shelters for different industries etc.

SOLID PARTITIONS

Constructed to form solid monobloc/ biobloc units, based on standard 1000mm or 1200mm modules (centre lines of pilasters) to suit floor to ceiling height up to 6000mm in a single lift.

1500mm (750mm*2) wide modules with single line joint are also available and such special size modules can be produced to order.

The 1000mm module is directly interchangeable with the single door module which is also based on a 1000mm centre line dimension.

The panels consist of two skins of 1.0/1.1mm high quality GPSP, galvanised plain skin pass, zero spangle steel sheets, folded and pressed by computerised machinery to form an 80mm thick monobloc unit.

Each panel is filled with Rockwool insulation and has integral stiffening sections at approximately 300mm or 500mm centres throughout its vertical height, thus maintaining panel flatness.

Fitted integrally to the base of each panel is a pair of levelling jacks with PVC feet to maintain height dimensions and a close fit to the floor and ceiling in floor to underside of soffit locations or in free standing situations, directly into the floor channel.

Panels are connected to adjacent units by means of a friction clip (H-Clips) system.

This allows the intermediate removal of panels and insertion of replacement panels or door units as and when required.

All panels are pure polyester powder coated to various RAL colours.

Various solid panel options are available, including: single line joint.

Pilasters can be fitted with special security clips (Spring Clips) to prevent entry from the outside.



GLAZED PARTITIONS

Double glazed panels are available to suit specification, and are generally selected to be similar to the desired solid module dimension, to give maximum interchange ability, and can be produced up to a maximum width of 1200mm without special design input. 1500mm wide modules are also available and such special size modules can be produced to order.

The glass is held within a preformed steel glazing section with a specially extruded PVC section to maintain stability and acoustic properties and flush line with the frame. Glazing can be at any level throughout the vertical height of each panel, but the following are standard configurations.



CHANNELS, JUNCTIONS, SECTIONS & SKIRTING

Head channels are manufactured to provide a flush effect to the panels when installed and are 83mm x 50mm x 3000mm in length.

The flush detail is repeated accordingly at the wall, columns.

Connection of the head and wall channels is factory cut butt joint (on full lengths) with the head channel running from wall face to wall face.

Channels to be fixed at an average of 600mm centres to ceiling grid and wall faces.

Slimline floor track is fixed to the floor at nominal 600mm centres to receive the adjustable panel jacks.

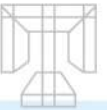
Standard skirting is formed as a folded steel section, 120mm high, installed to the recess or flushed at the base of the panels with a hidden fixings and end detail concealed by the door frame.

BLINDS AND GLAZING MANIFESTATIONS

Integral blinds can be installed within cavity of double glazed panels, comprising of 25mm solid or perforated, aluminium slots with matching head and base rails with 'open/close' control knob usually set at shoulder height in the pilaster.

Glazing manifestation can be produced by a variety of methods including; sand blasting acid etching, screen printing and applied film, subject to specification.





PARTITIONS WITH DIFFERENT FINISHES

A Modular system designed for various profile areas. Fully interchangeable with other Synergy Thrislington partition products, allowing many visual styles & performance specifications to be supplied via a single integrated system.

PARTITION WITH VENEER FINISH

Bioblock type panel consist of 2 units of 18mm thick MDF board with veneer finish on top constructed to form overall 80mm thick panel. It will be fitted on steel profile with hook joints. Inner steel frames are made from 1.1 mm thick Galvanized plain skin pass (zero spangle sheets) upto 3000 mm height. Above panels will be fitted with Back to back U Profile channels to the ceiling height upto 5000 mm. All top and bottom profiles will be same as per solid partitions. Electrical and mechanical services are accommodated within partition cavity.

Panel core Material: Rockwool insulation



PARTITION WITH MELAMINE FINISH

Bioblock type panel consist of 2 units of 18mm thick MDF board with melamine finish on top constructed to form overall 80mm thick panel. It will be fitted on steel profile with hook joints. Inner steel frames are made from 1.1 mm thick Galvanized plain skin pass (zero spangle sheets) upto 3000 mm height. Above panels will be fitted with Back to back U Profile channels to the ceiling height upto 5000 mm. All top and bottom profiles will be same as per solid partitions. Electrical and mechanical services are accommodated within partition cavity.

Panel core Material: Rockwool insulation



PARTITION WITH VINYL FINISH

Panel consist of vinyl (Newmor U.K Make or equivalent) fixed with special adhesive on steel monobloc partitions which is made up of 1.1mm thick high quality GPSP, galvanized plain skin pass, zero spangle steel sheets, folded and pressed by computerised machinery to form a 80mm thick monobolic unit upto 5000 mm height. All top and bottom profiles will be same as per solid partitions. The Vinyl covering on top can be done in factory or at site as per client requirement. Electrical and mechanical services accommodated within partition cavity

Panel core Material: Rockwool insulation



PARTITION'S DOOR

Synergy Thrislington doors are steel faced door with different infill Fire rated / Non Fire rated and with different finishes like Pure Polyester Powder Coating and wood veneer / laminates on steel. Doors are designed for different types and thickness of demountable partitions.

INTEGRATION OF SERVICES

Electrical services can be installed in the Status 8 partition system by removing the pilaster covers, skirting etc. and exposing wire ways. Permanent electrical features, integral within the partitions, can be installed during manufacture, subject to details and specification.

Synergy Thrislington can provide the protection and privacy required in many of the situation where fire and acoustic conditions prevail.

Partitions can have fire rating and sound attenuating characteristics.

The Partitions G.I skin can also be opened for maintenance of services according to client's need.



PARTITION WALLS

ACOUSTICS

Tested in accordance with BS 2750

All panels tested over a range of frequencies from 100 to 3150 Hz.

Rw factor for solid panels = 46dB

Rw factor for double glazed panels = 41dB

All junctions should be packed with Rockwool to have better acoustic performance while installation.

FIRE

Tested in accordance with BS 476: Part 22, 1987

Solid panels have A Class 0 surface.

Status 8 solid panels have been tested under the new British Standard for Insulation and Integrity. Standard panels are made to meet 30 minute integrity.

THERMAL TRANSMITTANCE

Solid panels give a Thermal Transmittance/U value of 0.463w/sq.m/deg.C.

WEIGHT

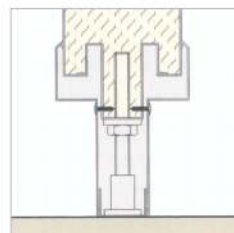
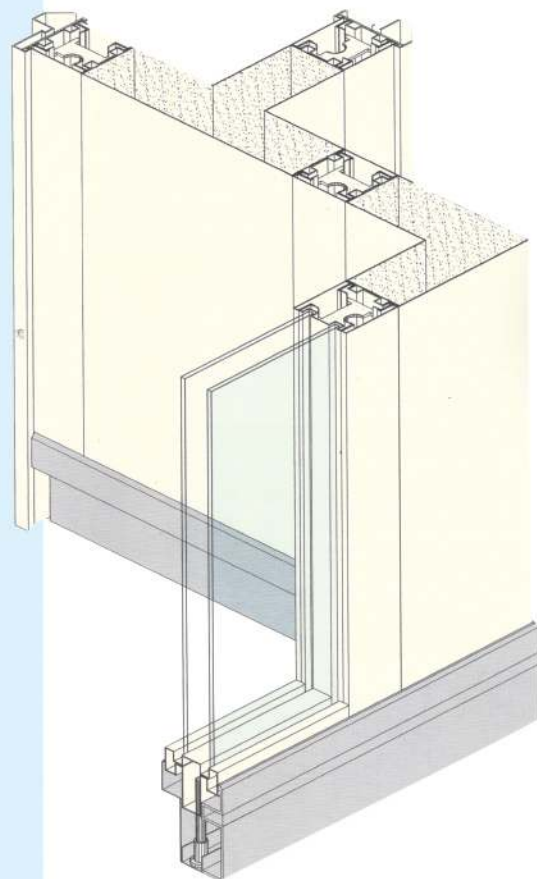
Solid panels have an average weight of 27/30 kg/m²

FINISH

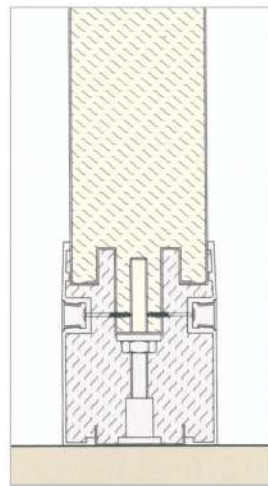
Solid panels, glazed sections, channels, steel skirting's etc. are pure polyester powder coated, baked at 200 deg.C for a 9 minute cycle. Application is by automatic electrostatic process giving a minimum coat thickness of 60 microns. The panels are finished to 20% to 30% gloss level, thus giving an attractive matt finish, together with exceptional resistance to surface damage.



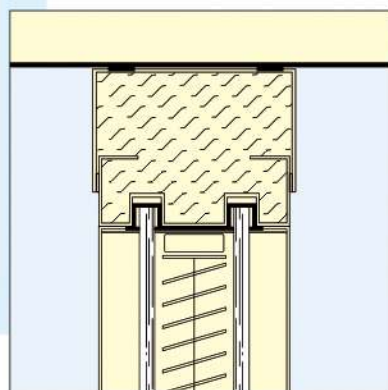
TECHNICAL DRAWING



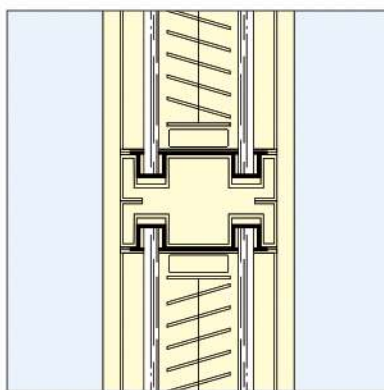
Solid base
with recessed skirting



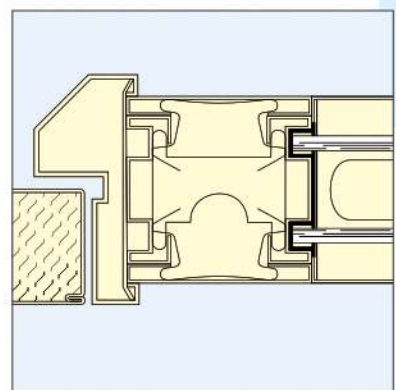
Solid base
with aluminium skirting



DOUBLE GLAZED HEAD DETAIL

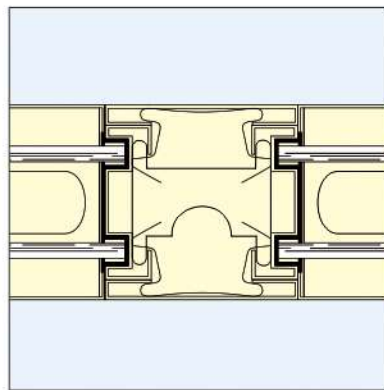


TRANSOM DETAIL

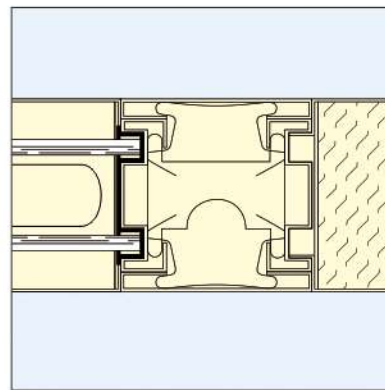


DOUBLE GLAZED TO DOOR FRAME

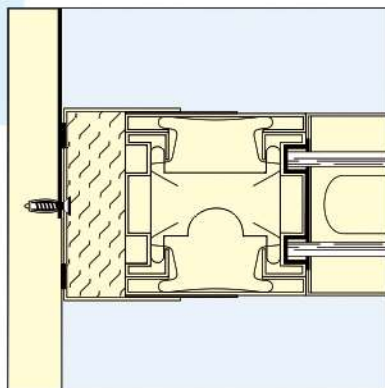
TECHNICAL DRAWING



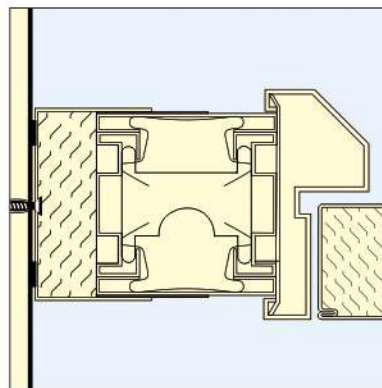
DOUBLE GLAZED TO DOUBLE GLAZED



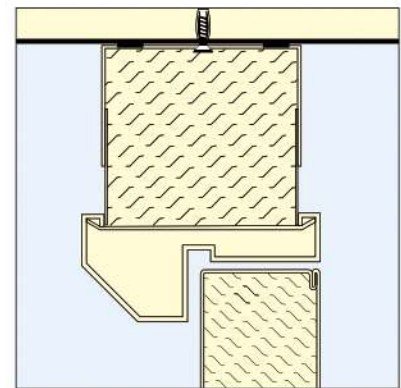
SOLID TO DOUBLE GLAZED



DOUBLE GLAZED TO WALL

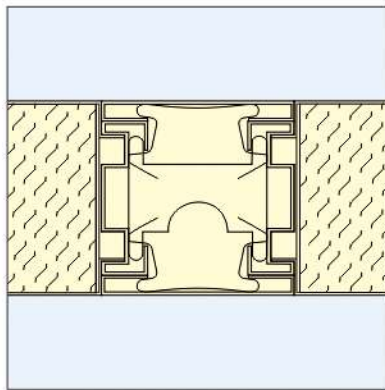


DOOR FRAME TO WALL

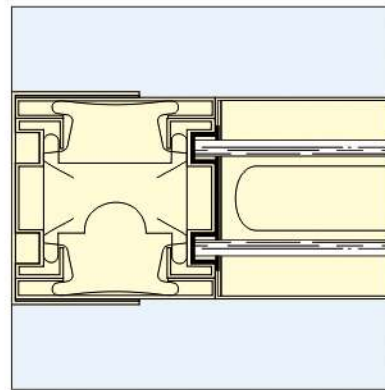


FULL HEIGHT DOOR FRAME

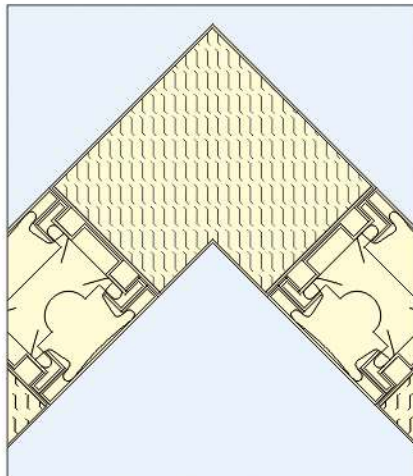
TECHNICAL DRAWING



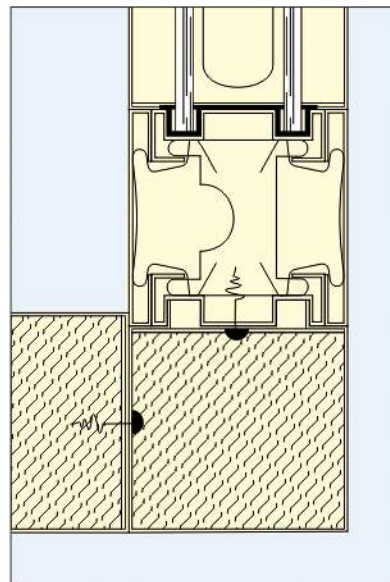
SOLID TO SOLID



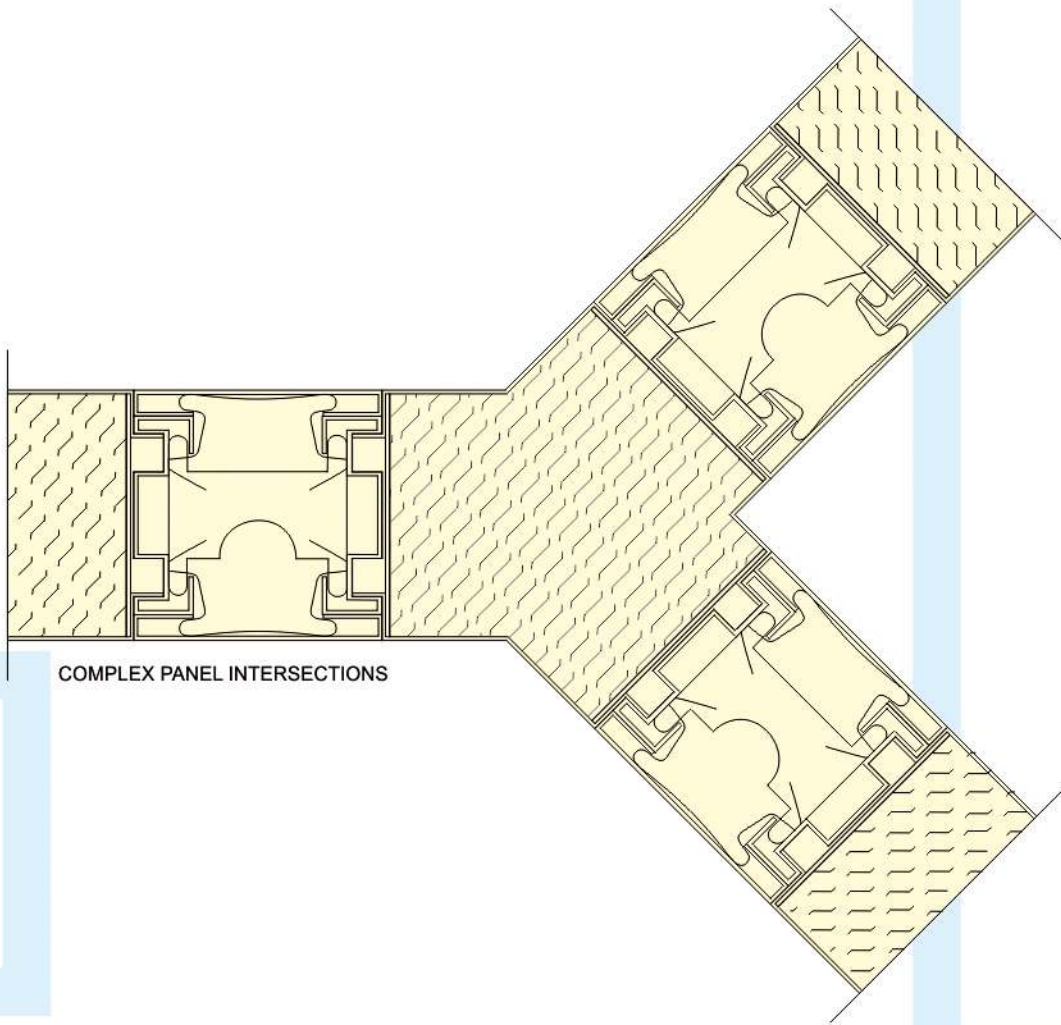
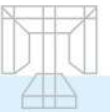
DOUBLE GLAZED OPEN END



STANDARD 90 CORNER PANEL



SOLID TO DOUBLE GLAZED CORNER JOINT



COMPLEX PANEL INTERSECTIONS



IN HIGH PLACES

By setting high standards for our products we have ended up in some very high places.

Like the Petronas Towers in Kuala Lumpur, One of the world's tallest building, we won the contract to manufacture, supply and install specifically designed Status Range partitions on floors 13 to 77 in Tower One.

It was a tall order for which we received high praise. Elsewhere we've played a part in several other high profile developments.

We provided 2,500 merers of partitioning for nine levels in the Department of the Enviroment's prestifious new office block, Eland House, and were involved in the construction of MI6,s headquarters.

We also supplied over 3,500 partitioning panels and 500 door sets for the new, £ 200 million Ministry of Defence centralised procurement base in Bristol. But it's not all office work.

Everton FC awarded us an important contract and we recently upgraded the entertainment contract catering facilities at Wembley Stadium.

So whatever your project, you'll find our products will always rise to the occasion.



MPW, Kuwait



Thrislington



Vauxhall Cross, London



Etisalat Tower, Dubai

Exova

warrington
certification

ADVANTAGES OF THRISLINGTON PARTITIONS

- Full control of design.
- Factory manufacturing control standards.
- Product complete with few ancillary components.
- Quality and consistency of finish.
- Very fast on site programme due to speed of installation.
- Easier to trian "In House" or local labour to install or execute alterations.
- Direct intercahnge of panels without affecting adjacent units.
- Additional panels easily ordered to same factory controlled standards.
- Easy transportation.
- Cleaner on site with less cutting.
- Limited waste.
- Factory galzing in clean environment.
- Purpose designed steelwork system of posts and trusses.
- Limited affects on or interfaces with surrounding structrue/building.
- Easy integration of services and associated penetrations.
- Tax Advantages-Possible 25% Savings or more
(Subject to InlandRevenue)



Vauxhall Cross, London

OTHER PRODUCT RANGE

METAL DOORS

Synergy Thrislington doors are designed to serve different market segments such as pharmaceutical clean rooms, operation theaters, cold rooms, cold stores, offices, hotels and commercial complexes. Synergy Thrislington design and application team is capable of providing tailor made solutions beyond generic requirements as well.

Material used for doors skins is chosen to meet application requirements through it is galvanized iron in most cases. Stainless steel or wood can also be used depending on the application need. Infill material is selected as needed, it can be kraft with honeycomb structure, mineral wool or PUF. Additional design features such as dust seals make Synergy Thrislington doors a popular choice with end users, specifier and contractors.

CLEAN ROOM PARTITIONS

For over 60 years, Thrislington has worked alongside designers, end users and specialist contractors to ensure economical and practical clean room solutions.

Synergy Thrislington team has taken the work of Thrislington future to meet constantly changing application needs. The company is capable of providing panels\ceiling\doors & window designed and manufactured to comply with contemporary practices and standards.

Synergy Thrislington clean rooms offerings are equally popular with end users, consultant, designers and contractor due to

- Adaptability to varying design & application needs
- Product quality
- Installation back-up
- On time delivery

Synergy Thrislington walk-on ceiling perfectly complements the clean room partition system. Maintenance access above the ceiling is available without the need for secondary walkways. All this makes Synergy Thrislington clean room offerings most preferred choice in today's competitive market of performance contracting.

PREFABRICATED SHELTERS

With simple designs, robust construction, time delivery and installation backup, today Synergy Thrislington prefabricated shelters are natural choice for various requirements. Such solutions are gaining popularity as

- Project site offices
- Remotely located education / healthcare centers
- Slum rehabilitation solution
- Police / military / para-military camps / barracks
- Shelters / offices where permanent constructions is not allowed

Salient features fo Synergy Thrislington pre-fabricated shelters are

- Light weight yet robust construction
- Easy and quick installation
- Demountability
- Aesthetics
- Longer lasting

Synergy Thrislington design and project team is capable of providing economical solutions including total avoidance of steel support structure. However where it is mandatory to use such structure, that can be designed very high light using strength and load bearing capacity of the panels.





Thrislington

OUR PATRONS

SYNERGY THRISLINGTON

Plant : Village - Beer Plassi, P.O. - Manjholi, Tehsil - Nalagarh, Distt - Solan, Pin - 174101 (Himachal Pradesh) India

P : +91 1795 265375, | F : +91 1795 265374, | E : info@synergythrislington.com, | W : www.synergythrislington.com

Corporate Office : A-1, Phase -1, Industrial Area, Mohali, Chandigarh - 160 055 (INDIA) | T : +91 172 277 0461 | F : +91 172 226 4391