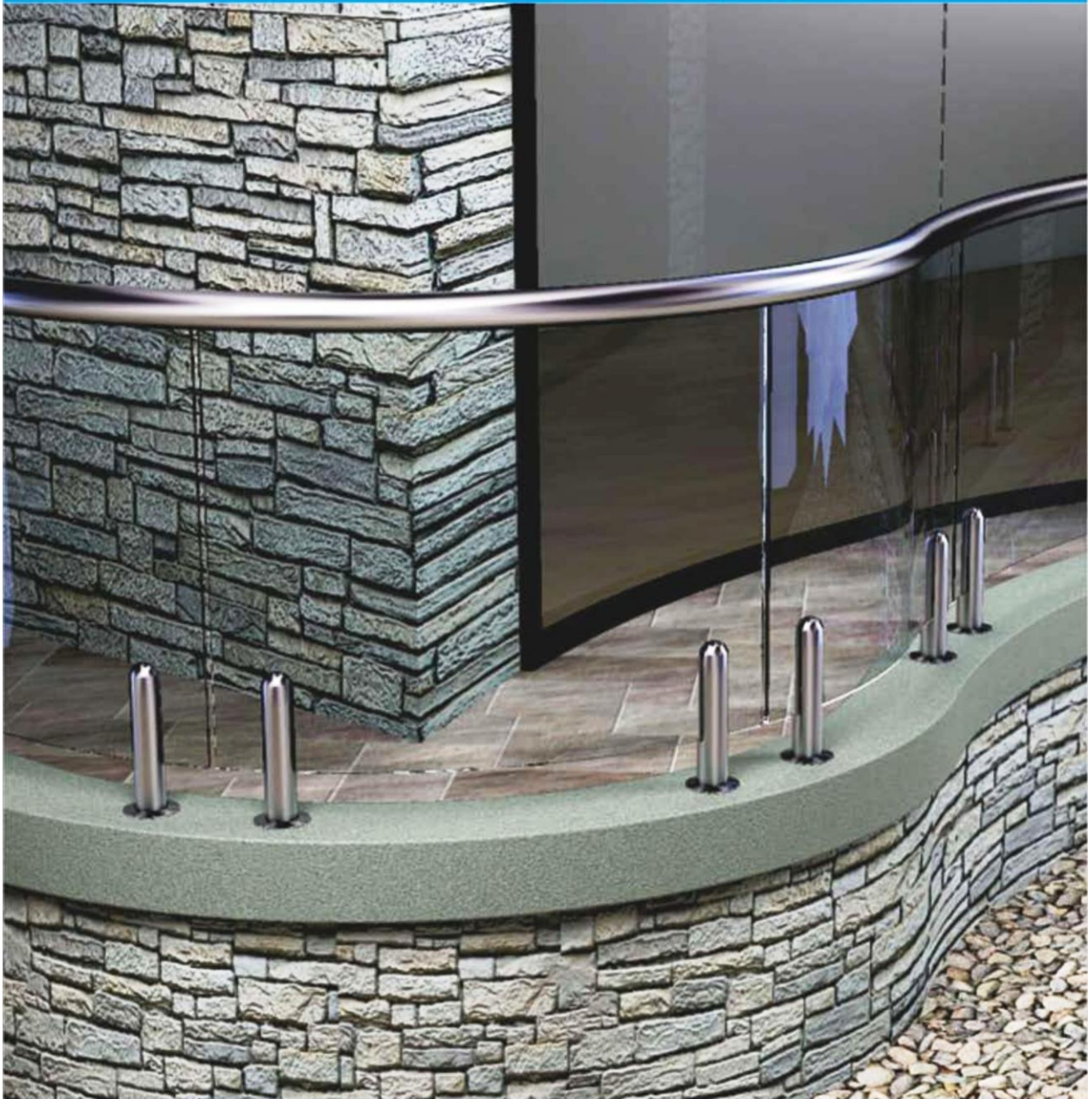


**Qneck**<sup>®</sup>  
Glass Architectural Hardware Product



[www.qneckhardware.com](http://www.qneckhardware.com)









## RAILING BRACKETS

**Qneck**<sup>®</sup>  
Glass Architectural Hardware Product



**QRB-1**  
Hockey Connector



**QRB-2**  
Glass Bracket 'C' Type



**QRB-3**  
Glass Bracket 'T' Type



**QRB-4**  
Glass Bracket 'T' Type



**QRB-5**  
Glass Bracket 'Square' Type



**QRB-6**  
Point Fitting



**QRB-7**  
Glass Bracket 'L' Type



**QRB-8**  
Wall Bracket 'T' Type



**QRB-9**  
Point Fitting



**QRB-10**  
Wall to Glass Heavy



**QRB-11**  
Square Bracket



**QRB-12 | D Bracket**

**QRB-13**  
Square Bracket

**QRB-14**  
Pivot



## BRASS HINGES & BRACKETS



**QBB-1**



**QBB-2**



**QBB-3**



**QBB-4**



**QBB-5**



**QBB-6**



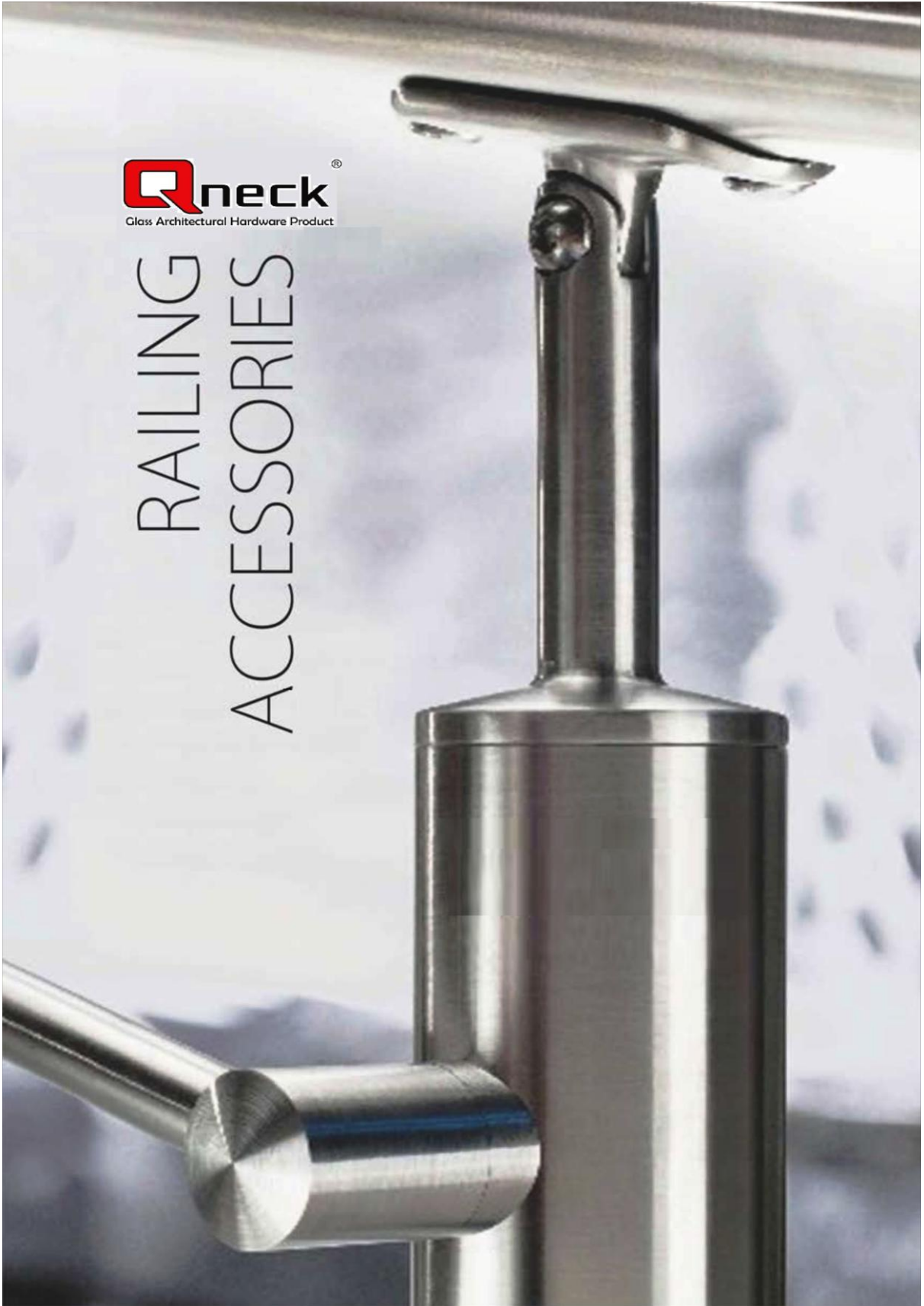
**QBB-7**



**QBB-8**



RAILING  
ACCESSORIES



BALUSTERS



QRB-001



QRB-002



QRB-003



QRB-004



QRB-005



QRB-006



QRB-007



QRB-008



QRB-009



QRB-010



BALUSTERS







QRB-027



QRB-028



QRB-029



QRB-030



QRB-031



QRB-032

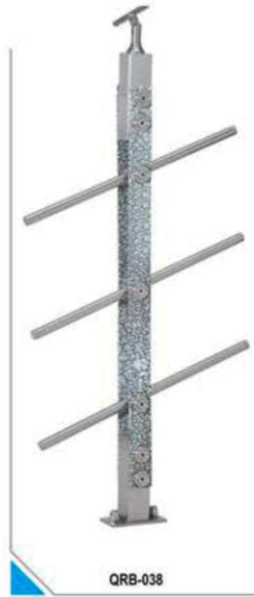


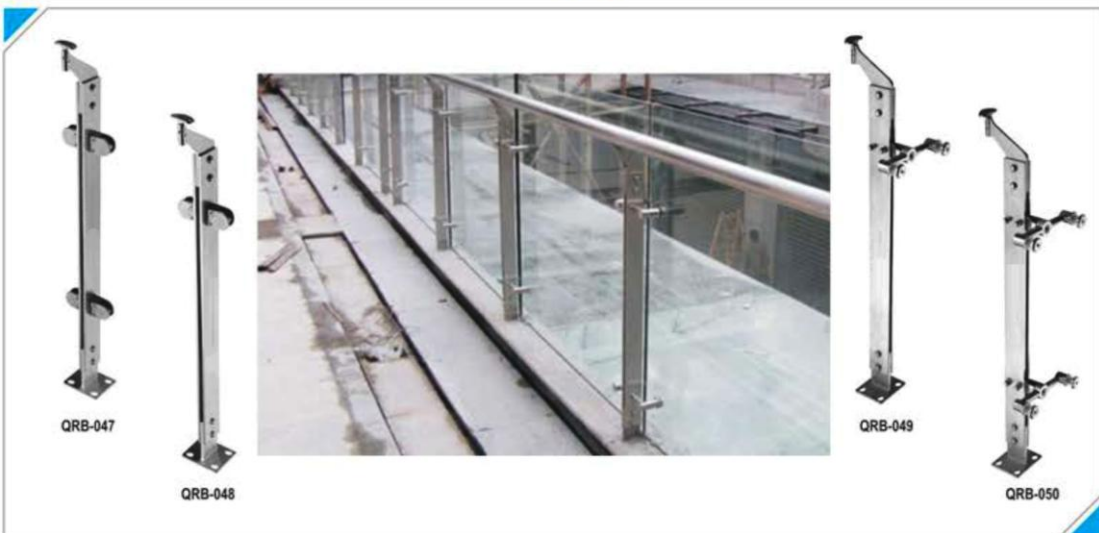
QRB-033



QRB-034

BALUSTERS







# BALUSTERS

**Qneck**<sup>®</sup>  
Glass Architectural Hardware Product



QRB-051



QRB-052



QRB-053



QRB-054







QNBD-01



QNBD-02



QNBD-03



QNBD-04



QNBD-05



QNBD-06



QNBD-07



QNBD-08



QNBD-09



QNBD-10



QNBD-11



QNBD-12



QNBD-131



QNBD-14



QNBD-15



QNBD-16



QNBD-17



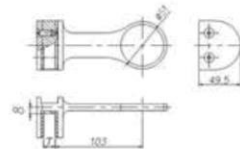
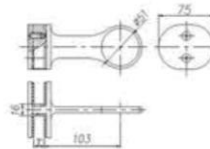
QNBD-18



QNBD-19



QNBD-20



# MORTISE HANDLES



QMH-01



QMH-02



QMH-03



QMH-04



QMH-05



QMH-06



QMH-07



QMH-08



QMHK-01



QMHK-02

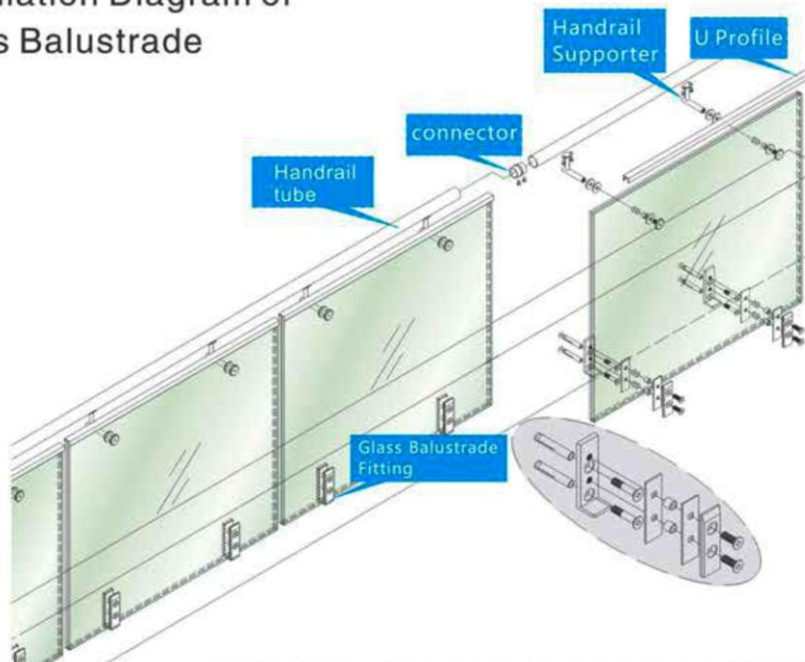




# BALUSTERS



## Installation Diagram of Glass Balustrade



Note : Over 12mm tempered glass or 16.76mm laminated glass should be used when the glass has horizontal load. Over 16.76mm tempered glass should be used when the distance (between the bottom of the balustrade glass and ground) is from 3m to 5m. It's prohibited to use horizontal loading glass when the distance (between the bottom of the balustrade glass and ground) is over 5m.. (Technical specification for application of architectural glass)

## GLASS STAIR FITTINGS



Note: Adjacent steps must be connected with connecting rod.