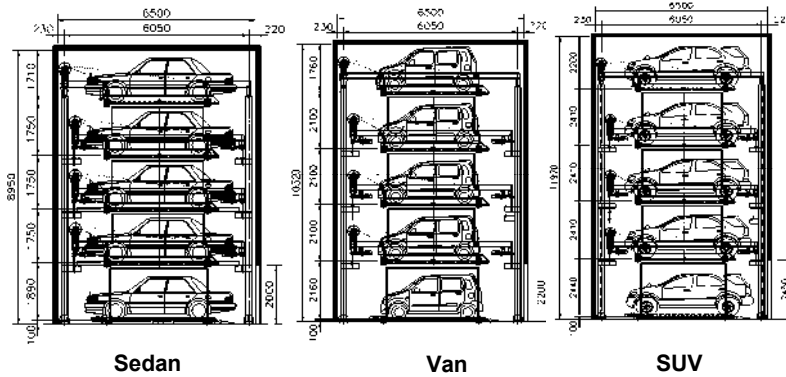


Standard



Sedan

Van

SUV

Notes :-

1. Changes in Height will change the car heights on the upper floor or the corresponding clearances on the ceiling.
2. Potential equalization from foundation grounding connection to system.
3. Overall machine dimension & platform width can be customized as per site conditions.
4. For Spacial car heights other than mentioned above contact KLAUS sales person.
5. Safety doors can be installed with manual / automatic option at additional cost.
6. Cross section dimensions are in mm.

**KLAUS Over Ground Puzzle Parking
KOGP (5 Level)**

Dimensions:

All space requirements are minimum finished dimensions. Tolerances for space requirements 0 /+30 mm. Dimensions in mm.

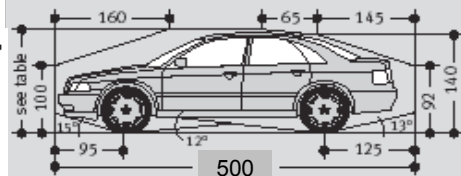
Suitable for :

Standard passenger car and station wagon. Height & Length according to contour.

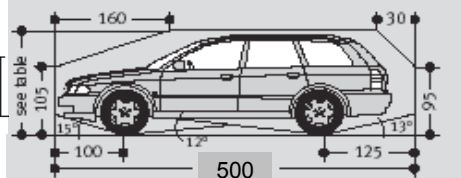
| Model Type | Car Heights | | |
|------------|-------------|--------------|--------------|
| | Upper Level | Middle Level | Ground Level |
| Standard | 1700 | 1550 | 2100 |
| Sedan | 1550 | 1550 | 1550 |
| Van | 1800 | 1800 | 1800 |
| SUV | 2100 | 2100 | 2100 |

| | |
|------------|---------------|
| Width | 1.90m |
| Weight | max. 2000 Kg. |
| Wheel Load | max. 500 Kg. |

Standard passenger car



Standard station wagon



Standard passenger cars are vehicles without any sports options such as spoilers, low-profile tyres etc.



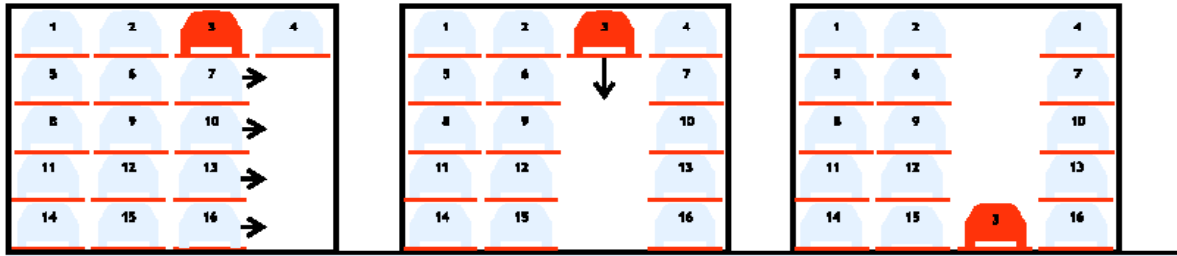
5/3.

NOT FOR PUBLIC RELEASE

INFORMATION ONLY

Function of the Parking Automat

(e.g. for retrieving vehicle off platform No. 3)

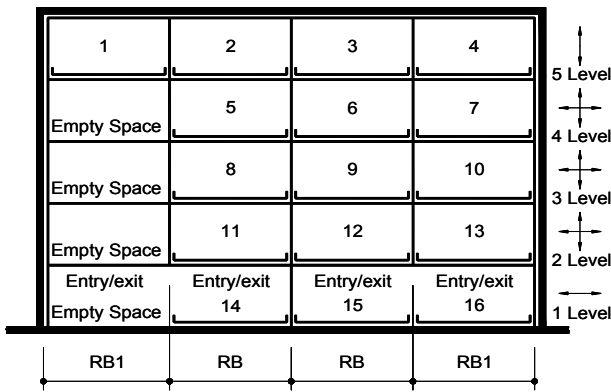


The 1st, 2nd, 3rd & 4th level car in grid no.3 are shifted to the right.

The platform No.3 from the level 5 is brought down to the level 1 (ground/entry level).

The vehicle on platform No. 3 can now be driven off the platform.

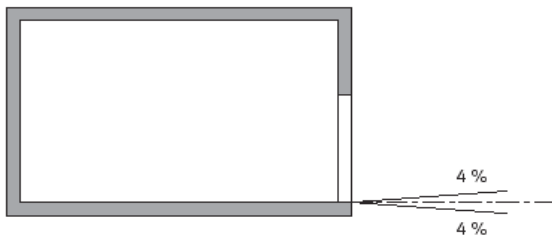
Width dimensions: (eg. 5L4G)



| Usable Platform Width | RB | RB1 |
|-----------------------|------|------|
| 2000 | 2450 | 2850 |
| 2100 | 2550 | 2950 |
| 2200 | 2650 | 3050 |
| 2300 | 2750 | 3150 |
| 2400 | 2850 | 3250 |
| 2500 | 2950 | 3350 |

! End parking spaces are generally more difficult to drive into. Therefore we recommended for end parking spaces our wider platforms. Parking on standard width platforms with larger vehicles may make getting into and out of the vehicle difficult. This depends on type of vehicle, approach and above all on the individual driver's skill.

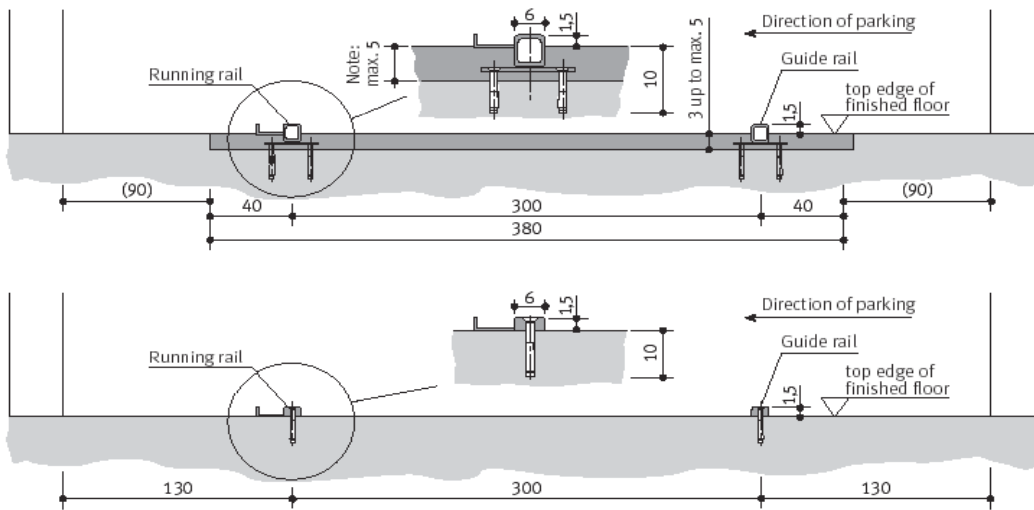
Approach



! The illustrated maximum approach angles must not be exceeded. Incorrect approach angles will cause serious manoeuvring & positioning problems on the parking system for which the local agency of Klaus accepts no responsibility.

| Technical Details & Ordering Nomenclature for Standard KOGP | | | | |
|---|---|--|---|---|
| | 2 GRID | 3 GRID | 4 GRID | 5 GRID |
| 3 LEVEL | KOGP 3L2G | KOGP 3L3G | KOGP 3L4G | KOGP 3L5G |
| | L5700xD6500xH6050 Car Spaces- 4 Nos. | L8150xD6500xH6050 Car Spaces- 7 Nos. | L10600xD6500xH6050 Car Spaces- 10 Nos. | L13050xD6500xH6050 Car Spaces- 13 Nos. |
| 4 LEVEL | KOGP 4L2G | KOGP 4L3G | KOGP 4L4G | KOGP 4L5G |
| | L5700xD6500xH7800 Car Spaces- 5 Nos. | L8150xD6500xH7800 Car Spaces- 9 Nos. | L10600xD6500xH7800 Car Spaces- 12 Nos. | L13050xD6500xH7800 Car Spaces- 16 Nos. |
| 5 LEVEL | KOGP 5L2G | KOGP 5L3G | KOGP 5L4G | KOGP 5L5G |
| | L5700xD6500xH9550 Car Spaces- 6 Nos. | L8150xD6500xH9550 Car Spaces- 11 Nos. | L10600xD6500xH9550 Car Spaces- 16 Nos. | L13050xD6500xH9550 Car Spaces- 21 Nos. |

Note: Tolerances for the evenness of the carriageway must be strictly complied with in accordance with DIN (= German Industrial Standard) No. 18202, chart 3, line 3.

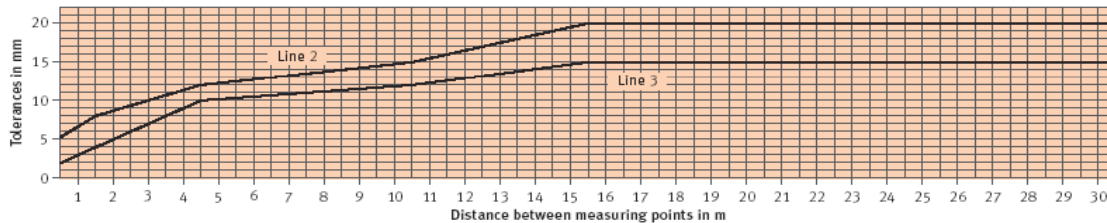


Evenness and Tolerances (Abstract from DIN 18 202, Table 3)

The distance between the lower flange of the platforms and the garage ground must therefore not exceed 2 cm. To adhere to the safety regulations and DIN EN 14 010 recommendations and to get the necessary even ground, the tolerances of evenness to DIN 18202, table 3, line 3, must not be exceeded. Therefore exact levelling of the ground by the client is essential.

| Column | 1 | 2 | 3 | 4 | 5 | 6 |
|--------|---|---|---|----|----|----|
| Line | Reference | Vertical measurement as limits in mm with measuring points distances in m to* | | | | |
| 2 | Unfinished to surface of covers, subconcrete and subsoils for higher demands, e.g. as foundation for cast plaster floor, industrial soils, paving tiles and slabstone paving, compound floor paving. Finished surfaces for minor purposes, e.g. warehouses, cellar. | 0,1 | 1 | 4 | 10 | 15 |
| 3 | Finished grounds, e.g. floor pavement serving as foundation for coverings. Coverings, tile coverings, PVC flooring and glued coverings. | 5 | 8 | 12 | 15 | 20 |
| | | 2 | 4 | 10 | 12 | 15 |

* = Intermediate values are to be taken out the diagram and must be rounded-off to mm



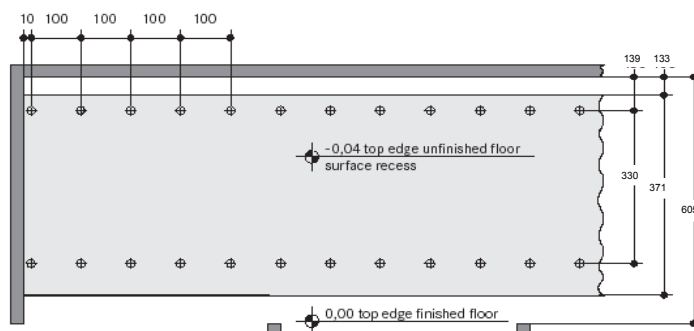
Check Points

The evenness of a surface is checked independently of its position and slope by bore hole gauges between two check points on the surface. KLAUS normally makes a random test using single measurements in case of obviously inaccurate surfaces.

For uniform examination of the evenness of the ground surface the following points are defined as measuring and check points:

- a) for surface recess
- b) for finished floor.

a) Layout for surface recess width 4 m



⊕ Measuring points at 100 cm points for checking the unevenness acc. to DIN 18202, table 3, line 2, or acc. diagram

() dimensions in brackets for increased length

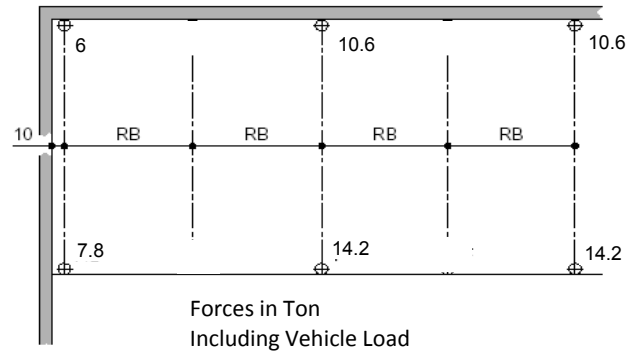
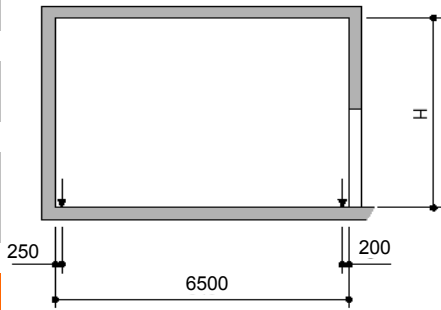
Load Plan

Page 1
Section
dimensions Car
data

Page 2
Function
Approach
Technical

Page 3
Eveness
Tolerances
Check Points

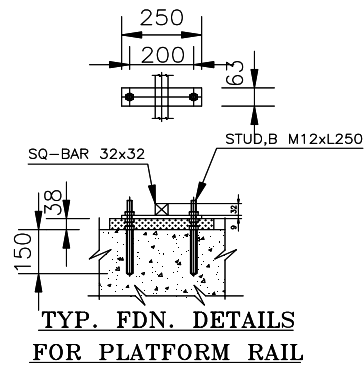
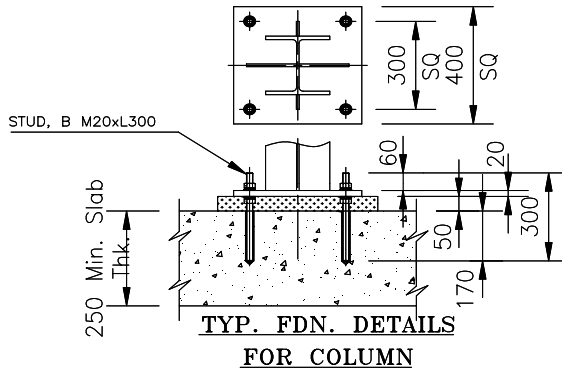
Page 4
Load Plan
Electrical Data
Technical Data



The system is dowelled to floor.

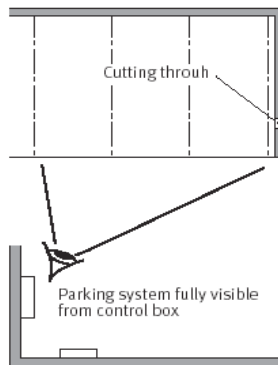
The drilling depth in the floor is approx. 200mm

Depending on site ground conditions, suitable foundation / footing to be provided by the customer.



If Walkways arranged directly to the side or behind the system, railing have to be provided by the Customer according to local requirements, height min. 200cm, This is applicable during installation phase too.

Electrical Data



Control Panel: * To be provided at location which will have easy accessibility for installation & maintenance. Preferred and recommended at Entry level / ground level. * **Electrical wiring:** main supply 3PH 415VAC (+/- 10%), 50Hz (+/- 2%), with neutral & earth (3PH+N+E) electrical supply through a 4 pole MCCB of suitable rating to be provided by client. Cabling from MCCB to control panel is in client scope.

Operator Panel: * In general located on the front of the right hand side structural member / column at an approx height of 1250mm (Bottom of Operator Panel) from ground level. * May also recessed in wall if required. * Option available for Auto as well as Manual operation.

Technical Data

Electrically driven doors

In accordance with ZH 1/494 commercially used power-driven doors must be subjected to annual inspections. We urgently recommend concluding a maintenance agreement that includes this service for the entire system.

We reserve the right to change this specification without further notice.

The Klaus company reserves the right in the course of technical progress to use newer or other technologies, systems, processes, procedures or standards in the fulfillment of their obligations other than those originally offered provided the customer derives no disadvantage from their so doing.