

FitWell[®]
Collets & Accessories



AN ISO 9001 : 2015 CERTIFIED COMPANY

CNC OUTER DIAMETER CLAMPING CHUCK

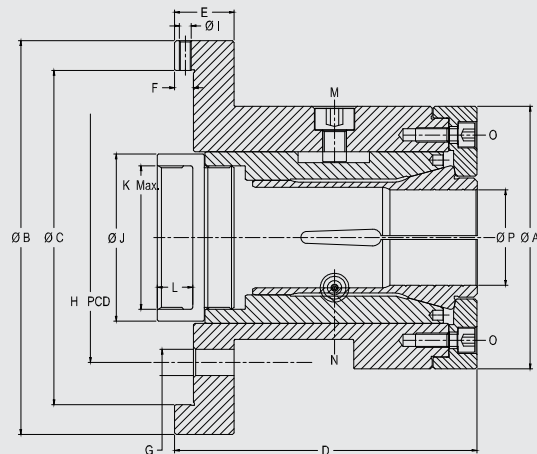
DIMENSIONS

All Dimensions in mm.

Model	FEPCA - 25	FEPCA - 42	FEPCA - 60
A	95	110	135
B	165	165	168
C	140	140	150
D	115	126	142
E	25	25	25
F	8	8	8
G	11 - 3 / 120°	11 - 3 / 120°	11 - 3 / 120°
H PCD	104.8	104.8	133.35
I	5 x 0.8	5 x 0.8	5 x 0.8
J	55	70	92
K	50 x 1.50	60 x 1.50	80 x 1.50
L	15	15	20
M	10 x 1.50 - 12.00	10 x 1.50 - 12.00	10 x 1.50 - 12.00
N	Grease Nipple	Grease Nipple	Grease Nipple
O	6 x 1 - 15.00	6 x 1 - 15.00	6 x 1 - 15.00
P	2.00 to 26.00	5.00 to 42.00	10.00 to 60.00

SPECIFICATIONS

Model		FEPCA - 25	FEPCA - 42	FEPCA - 60
Total Stroke	mm	7	7	7
Max. draw bar push	kgf	2000	2500	3000
Max. speed	rpm	5000	4500	3500
Collet to be used		TR - 25 / DL - 25	TR - 42 / DL - 42	TR - 60 / DL - 60



FitWell[®]
Collets & Accessories



AN ISO 9001 : 2015 CERTIFIED COMPANY

CNC INNER DIAMETER CLAMPING CHUCK

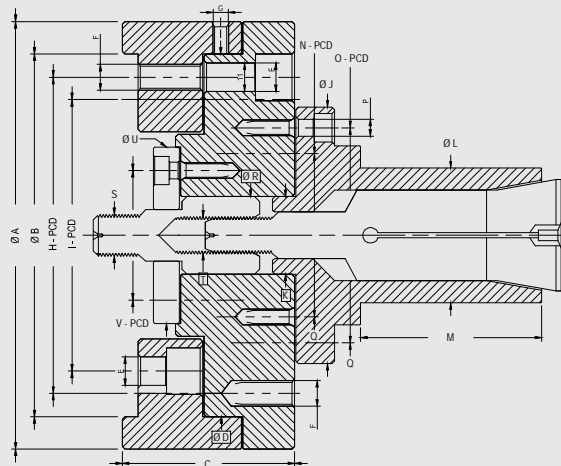
DIMENSIONS

All Dimensions in mm.

Model	FEPC 20 - 45 X L 50	FEPC 46 - 70 X L 100	Description
A	165	165	Body Main OD
B	140	140	CNC Clamping ID
C	66	66	Inner Collet Chuck Length
D	140	140	Collet Chuck Dowel
E	PCD 122 - 11 - 120°	PCD 122 - 11 - 120°	Plat Clamping Hole
F	PCD 122 - 10 x 1.5 - 120°	PCD 122 - 10 x 1.5 - 120°	Plat Clamping Thread
G	6 X 1.0 - 120°	6 X 1.0 - 120°	Run Out Balance Thread
H	PCD 122 - 120°	PCD 122 - 120°	Plat Mount PCD
I	PCD 104.8 - 120°	PCD 104.8 - 120°	CNC Spindle Clamping PCD
J	80	100	Collet Main OD
K	30	30	Collet Alignment OD
L	20 - 45	46 - 70	Collet Job Clamping OD
M	50	100	Collet Job Clamping Length
N	PCD 63 - 120°	---	Collet Mounting PCD
O	---	PCD 83 - 120°	Collet Mounting PCD
P	PCD 63 - 6.5 - 120°	PCD 83 - 6.5 - 120°	Collet Mounting Bolt Hole
Q	PCD 63 - 6 x 1.0 - 120°	PCD 83 - 6 x 1.0 - 120°	Collet Mounting Thread
R	30	30	Draw Bar Coupler OD
S	16 X 2.00	16 X 2.00	Draw Bar Coupler OD Thread
T	10 X 1.5	14 X 1.5	Coupler ID Thread For Collet
U	68	68	Coupler Guide Plate OD
V	PCD 50 - 120°	PCD 50 - 120°	Coupler Guide Plate Mounting PCD

SPECIFICATIONS

Model		FEPC 20 - 45 X L 50	FEPC 46 - 70 X L 100
Total Stroke	mm	7	7
Max. draw bar pull	kgf	1000	1000
Max. speed	rpm	4500	4500





Fit Well Brand CNC Power Collet Chuck

Designed as a low cost alternative to Power Chucking Systems, these chucks are used for machining work pieces that cannot be clamped optionally in power operated jaw chucks. They are ideal for machining parts that are susceptible to deformation or surface damage or components that require high speed machining. They are equipped with a lubrication facility that ensures a long, trouble free life.

Since there is no end movement of the work piece while gripping, in these OD clamping dead length type collet Second operation work can be accurately located endwise. They can also be equipped with steel collet on request in collet model Traub automate A - 25 or A - 42 and A - 60 etc.

Since there is no end movement of the work piece while gripping, in these ID clamping collet Second operation work can be accurately located endwise. They can also be equipped with steel collet on request in collet model FEPC 20 - 45 X L 50 or FEPC 46 - 70 X L 100 etc.

Manufactured from high-grade alloy steel, all the sliding surfaces of these chucks are hardened and ground for accurate running and long service. For Lubricant purpose grease (Cristol Premium NLGI 3) ensures greater protection against heavy & shock loads, Maximum protection offered against rust & corrosion nipple are there.

All collet chucks can be supplied with standard cylindrical recess mounting. Spindle mounting are possible with the of an adaptor plat (Back Plat).





Mfg.:

Fit Well
ENGINEERS

AN ISO 9001 : 2015 CERTIFIED COMPANY

5-Chhaniyara Estate, Dhebar Road (South), Atika,
B/h Pancheshwar Estate, RAJKOT - 360 002 (Gujarat)

Ph. : + 91 281 2367412 Cell. : +91 9427206889 / 9825196077

Web: www.fitwellcollets.com E-mail: info@fitwellcollets.com

AUTHORISED DEALER