



* Traub Collet * Button Collet

FitWell[®]
Collets & Accessories

* Diamond Collet * Drill Collet



AN ISO 9001 : 2015 CERTIFIED COMPANY



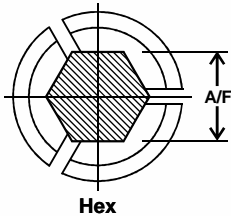
SPINDLE COLLET A-25 / A-30



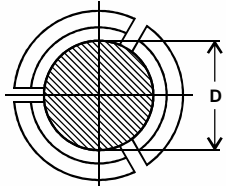
SPINDLE COLLET A-42



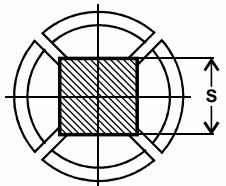
SPINDLE COLLET A-60



Hex



Round



Square

HEAD SOCKET COLLET MANUFACTURING RANGE

MODEL	ROUND	HEX	SQUARE
A-15	Ø 2 mm to 16 mm in step of 0.5 mm. Ø 1/16" to 5/8" in step of 1/16"	4 mm to 13 mm in step of 1.0 mm. Inches size on request	4 mm to 11 mm in step of 1.0 mm. Inches size on request
A-25	Ø 2 mm to 26 mm in step of 0.5 mm. Ø 1/16" to 1" in step of 1/16"	4 mm to 22 mm in step of 1.0 mm. 1/8" to 7/8" in step of 1/16"	4 mm to 18 mm in step of 1.0 mm. Inches size on request
A-30	AS PER REQUIREMENT	AS PER REQUIREMENT	AS PER REQUIREMENT
A-42	AS PER REQUIREMENT	AS PER REQUIREMENT	AS PER REQUIREMENT
A-60	AS PER REQUIREMENT	AS PER REQUIREMENT	AS PER REQUIREMENT



**INTERMITTENT TUBES
& SPACERS**



CHUCK LEVERS / FINGERS



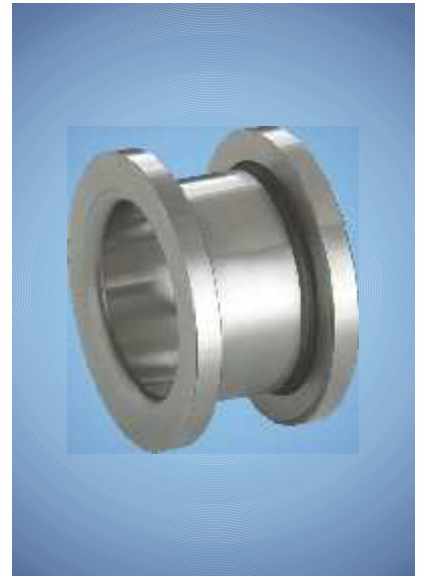
DRILL SLEEVE / QUILL



FINGER SLEEVE



MASTER SLEEVE



FINGER SLEEVE ROLLER



DRILL COLLET A-3
Size : 2 mm onwards



CAM PIN 10 / 12 MM.
CAM BOLT & ROLLER



DRILL COLLET A-4
Size : 5 mm onwards



CARBIDE LINED GUIDE BUSH
Size : 2 mm onwards



SLIDING HEAD COLLET
Size : 2 mm onwards



SPINDLE COLLET A-32
Brown & Sharp / Sewmac

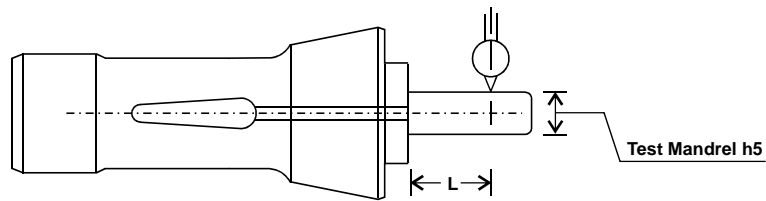


BUTTON COLLET
Size : LIN - 12 to LIN - 48

3/4" COLLET
Size : 3 mm onwards

1/2" COLLET
Size : 3 mm onwards

PERMISSIBLE CONCENTRICITY CHARTS IS : 6238 - 1971



ROUND BORE

Capacity (Bore Size) in mm	Test Length L in mm	Permissible Concentricity Error (T.I.R.)
above 1 to 1.6	6	0.02
above 1.6 to 3	10	0.02
above 3 to 6	16	0.02
above 6 to 10	25	0.02
above 10 to 18	40	0.03
above 18 to 24	50	0.04
above 24 to 30	60	0.04
above 30 to 50	80	0.05
above 50	100	0.05

HEXAGON AND SQUARE

Capacity (Bore Size) in mm	Test Length L in mm	Permissible Concentricity Error (T.I.R.)
above 4 to 6	16	0.065
above 6 to 10	22	0.065
above 10 to 12	25	0.065
above 12 to 19	38	0.075
above 19 to 24	48	0.080
above 24 to 50	50	0.080
above 50	50	0.090

Mfg.:

Fit Well ENGINEERS

AN ISO 9001 : 2015 CERTIFIED COMPANY

5-Chhaniyara Estate, Dhebar Road (South), Atika,
B/h Pancheshwar Estate, RAJKOT - 360 002 (Gujarat)

Ph. : + 91 281 2367412 Cell. : +91 9427206889 / 9825196077

Web: www.fitwellcollets.com E-mail: info@fitwellcollets.com

• AUTHORISED DEALER •

perfection



Silicon : 98255 38889