

Safal Seeds & BIOTECH LTD

We are serving

Quality

PRODUCTS



Sorghum



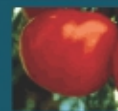
Hybrid Maize



Rice (Paddy)



Hybrid Millet



Tomato (From Open
Pollinated Vegetable Seeds)

AGRO



ABOUT US

Safal Seeds & Biotech Limited is in the field of crop genetics since inception of the company and has world-class tropical genetic material and expertise. The company has developed several hybrids in the above crops, which are having higher yield potential, better grain and fodder quality and resistance various biotic and abiotic stress conditions.

The continuous research and dedicated efforts of the plant breeders has resulted in development of excellent hybrid of Maize, Sunflower, Bajra, Cotton, Paddy, Grain Sorghum and Forage Sorghum.

Every year, more than 500 new hybrids are being made and tested along with the competitors' best hybrids for four successive seasons. The short listed highly promising hybrids are tested on farmer's fields at various locations in India. Safal seeds have testing centers at multiple locations in the country. The company is collaborating with ICAR, Govt. Institutions, ICRISAT & Foreign seed companies. The company is recognized as R & D house, by The Department of Scientific & Industrial Research, Government of India, Ministry of Science & Technology, New Delhi.

TPS
(True Potato Seeds)

PRODUCTS

Catering to the requirements of agricultural sector, we provide different varieties of Hybrid Maize Seeds. We are a well-reckoned Hybrid Maize Seeds Manufacturer and Supplier in Jalna, Maharashtra. The Hybrid Maize Seeds offered by us are hugely sought-after due to their high germination rate. Moreover, the Hybrid Maize Seeds are free from any sort of impurities. Clients can avail the different varieties of Hybrid Maize Seeds in bulk from us.

HYBRID MAIZE SEEDS (ARJUN)

Days to 50% Flowering	60-62
Days to maturity	105-110
Plant height (cm)	230-240
Leaves	Dark Green, semi erect
Cob placement	Middle
NO.ofcobs/plant	Generally one, occasionally two(1-2)
Cob length(cm)	24-26
Cob diameter(cm)	6-8
Cob shape	Long, cylindrical, tapering at end
Seed rows/ cob	14-16
Seeds / row	40-42
Shanks	Narrow, Cylindrical, white coloured
Seed	Medium bold, semi dent, yellow coloured.
1000 seed weight(g)	220-230
Reaction to diseases	Tolerant to Helminthosporium blight & stalk rot
Remarks	Perform well under high inputs



Hybrid Maize Seeds (Arjun)

HYBRID MAIZE SEEDS (KARAN)

Days to 50% Flowering	60-62
Days to maturity	100-105
Plant height (cm)	230-240
Leaves	Dark Green, semi drooping
Cob placement	Middle
NO.ofcobs/plant	Generally one, occasionally two(1-2)
Cob length(cm)	24-26
Cob diameter(cm)	7-8
Cob shape	Long, cylindrical
Seed rows/ cob	14-16
Seeds / row	42-44
Shanks	Narrow, Cylindrical, white
Seed	Medium bold, semi flint, orange yellow coloured.
1000 seed weight(g)	220-230
Reaction to diseases	Tolerant to Helminthosporium blight & stalk rot
Remarks	Perform well under high inputs



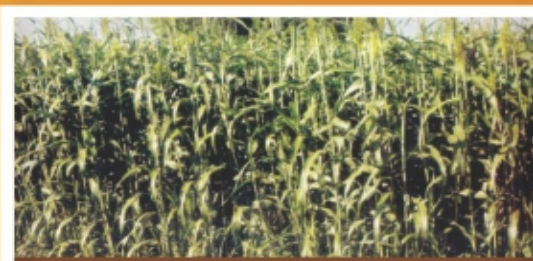
Hybrid Maize Seeds (Karan)

Sorghum

The specialization of our organization lies in OFFERING the best quality Sorghum Seeds. We are a reliable name as Sorghum Seeds Manufacturer and Supplier in Jalna, Maharashtra. We OFFER different varieties of Sorghum Seeds. The Sorghum Seeds that we offer are widely demanded as they ensure high germination rate. Additionally, to ensure the quality, we process Sorghum Seeds under utmost hygienic conditions.

Details:

- Multi cut and bumper yielding
- Having 7.5 sugar and 9.5 % Protins. Having sweet taste
- Gives more yield due to more leaves
- Having good drought tolerance and good tolerance to Anthracnose and downy mildew
- Having good re-growth potential and gives lots of cuttings
- Seed rate - 10 kg per acre
- Spacing - 30 to 40 cm between rows and 10 to 15 cm between plants
- Yield - Having potential to yield 15 to 25 tons per acre
- Cuttings - 1st cutting can be made after 45 days and then after every 25 days
- Fertilizers Dose :While preparing the land, 5 tons per acre FYM (Farm Yard Manure) to be applied and later on as below :



Forage Sorghum Seeds

Type	UREA 46%	Super PHOSphate 16%	Murate of Potash 60%
While sowing	35.00%	150 kg	34kg
30 days after showing	30.00%	-	-
After each cutting	25.kg	-	-



Hybrid Grain Sorghum Seeds - SBSH 151

Details

Type	SBSH 151
Duration	100-105 days
Plant height (cm)	180-190
Leaf colour	Dark green
Leaf position	Semi erect
Stem thickness	Thick
Leaf sheath nodes	Enclosed
Earhead exertion	Exerted
Earhead shape	Long cylindrical
Earhead compactness	Semi compact
Glume colour	Straw
Seed size	Medium bold
1000 seed WEIGHT (g)	28-30
Thresh ability	Easy

Avail from us the best quality Paddy Seeds that ensure high growth of paddy. Our optimum quality Paddy Seeds are hygienically processed to produce high grade variety of rice. The Paddy Seeds that we offer have high germination rate and that is why hugely demanded by the clients all over the country. Our quality OFFERING has made us a renowned name as Paddy Seeds Manufacturer and Supplier in Jalna, Maharashtra.

Rice (Paddy)

Paddy Seeds (Annapurna)

Details

Days to 50% Flowering	100-105
Days to maturity	120-125
Plant height(cm)	100-105
No. of tillers/plant	22 – 24
Leaf colour	Dark green
Anther colour	Yellow
Panicle length (cm)	28-30
Panicle shape	Compact semi drooping
J No. of branches/panicle	12 – 15
I No. of seeds/panicle	220-240
Seed Width. (mm)	1.8- 2.0
Seed length (mm)	8 – 10
1000 seed WEIGHT (g)	20-22
Grain quality	Medium coarse
Disease resistance	Tolerant to major leaf diseases
Response to lodging	Tolerant
Response to shattering	Tolerant



Paddy Seeds (Annapurna)



Paddy Seeds (Gajni)

Paddy Seeds (Gajni)

Details

Days to 50% Flowering	110 -115
Days to maturity	140 - 145 late
Plant height(cm)	110 -120
No. of tillers/plant	18- 20
Leaf colour	Dark green
Anther colour	Yellow
Panicle length (cm)	14 - 16
Panicle shape	Compact drooping
J No. of branches/panicle	12 – 14
I No. of seeds/panicle	280- 300
Seed Width. (mm)	1.0- 1.5
Seed length (mm)	5 – 6
1000 seed WEIGHT (g)	12 – 14
Grain quality	Super Fine
Disease resistance	Resistant
Response to lodging	Tolerant to major diseases
Response to shattering	Non-Shattering

Hybrid Millet Sheed

To ensure HIGH YIELD, clients can buy high quality Hybrid Millet Seeds from us. We are counted as reliable Hybrid Millet Seeds Manufacturer and Supplier in Jalna, Maharashtra. We offer different varieties of Hybrid Millet Seeds as per the requirements of clients. The Hybrid Millet Seeds are hygienically processed and are PACKAGED in good quality materials. Additionally, clients can Buy Hybrid Millet Seeds at affordable prices from us.

Millet Seeds (Balwan)

Details

Characters	Balwan
Plant type	Robust
Duration (day)	80-85
Plant height (cm)	200-210
No. of Tillers	03/04/12
Plant pigmentation	Dark Green
Earhead SHAPE	Cylindrical
Earhead Compactness	Highly Compact
Earhead diameter (cm)	3.8-4.0
Earhead length (cm)	28-30
Earhead bristles	Absent
Anther colour	Light Yellow turns brown
Grain colour	Dark Gray
Grain size	Bold
Days to 50 % flowering	53-55
Reaction to downy mildew	Resistant



Millet Seeds (Balwan)



Millet Seeds (Giridhar)

Millet Seeds (Giridhar)

Details

Characters	Giridhar
Plant type	Robust
Duration (day)	78-80
Plant height (cm)	180-200
No. of Tillers	04/05/12
Plant pigmentation	Dark Green
Earhead SHAPE	Cylindrical, Tapering at end
Earhead Compactness	Highly Compact
Earhead diameter (cm)	3.8-4.0
Earhead length (cm)	24-26
Earhead bristles	Absent
Anther colour	Yellow turns brown
Grain colour	Gray
Grain size	Medium bold
Days to 50 % flowering	46-48
Reaction to downy mildew	Resistant

The expertise of our company lies in OFFERING the best quality Tomato Seeds. We OFFER Tomato Seeds to clients located in different parts of the nation. The Tomato Seeds that we offer are developed using the latest methods and have high germination rate. Our Tomato Seeds are thoroughly processed and are free from any sort of contamination. In addition, we are a reliable Tomato Seeds Manufacturer and Supplier in Jalna, Maharashtra.

**Tomato
Seed**

Marglobe Tomato Seeds

Details

Maturity	Mid Early
Plant type	Indeterminate medium cover
Fruits SHAPE	Deep globe- Average WEIGHT 150 g
Disease tolerance	F0S
Remarks	Standard cultivar. Good productivity. Adapted to humid conditions. G.S.



Marglobe Tomato Seeds



Marmande Tomato Seeds

Marmande Tomato Seeds

Details

Plant type	Early Indeterminate; medium plant type, well vigorous
Fruits SHAPE	Deep globe Average WEIGHT 95 g
Remarks	Standard type. Smooth fruits. Prolific UNIFORM green coloured before riping.

Moneymaker Tomato Seeds

Details

Plant type	Early Indeterminate; medium plant type, well vigorous
Fruits SHAPE	Deep globe Average WEIGHT 95 g
Remarks	Standard type. Smooth fruits. Prolific UNIFORM green coloured before riping.



Moneymaker Tomato Seeds

INTRODUCTION

The availability of good quality, disease free seed tuber has been a major constraint to increase both the area and productivity of Potato in developing countries. Although in some countries innovative technologies like tissue culture etc. have already been introduced in basic seed production schemes, but the supply of quality seed tubers may fulfill only a part of the demand. Requirement of seed tuber per ha, is 2.5 ton which is quite voluminous, require transportation and space to keep. Moreover, as it is vegetative material, farmer has to keep a part of the produce for next year is planting material which is atleast 1/10th part of his total production. It means part of food materials can not be used for food. but True Potato Seed (TPS) has certain benefits like:

- A) Most of the viruses do not come in the seeds.
- B) Crop from TPS is field resistant late blight (*Phytophthora infestans*).
- C) Low requirements of planting materials.
- D) Easy to transport, so less transport cost.
- E) Higher yield helps to give higher net profit. Moreover, it may be used for own potato seed development programme, where availability of bulk quantity seed material is a constraint.

ADVANTAGE OF TPS OVER TUBERS

SL NO.	PARTICULAR	SEED TUBERS	SEEDLING TUBERS	TPS TRANSPLANT
1	SPEED RATE	HIGH (2.5t/ha)	LOW (50gTPS + 1t/ha)	VERY LOW (125gTPS/ha)
2	USE OF LAST YEAR'S FIELD PRODUCE	YES	YES	NO
3	COLD STORE FACILITY	REQUIRED	REQUIRED	NOT REQUIRED
4	COLD STORE CHARGES	HIGH	LOW	NIL
5	TRANSPORT COST	HIGH	LOW	NIL
6	COST OF PLANTING MATERIAL	HIGH	LOW	VERY LOW
7	CULTURAL PRACTICE	SIMPLE	SIMPLE	SIMPLE
8	DISEASE RESISTENCE	LOW	HIGH	HIGH
9	YIELD	MEDIUM	VERY HIGH	MEDIUM
10	RECOVERY RATE	LOW	HIGH	HIGH
11	WHO CAN AFFORD TO GROW	LARGE & MEDIUM FARMERS	LARGE TO SMALL FARMERS	LARGE TO VERY SMALL FARMERS

We are serving
Quality
PRODUCTS

CONTACT US

SAFAL SEEDS & BIOTECH LTD

MR. KAMAL O ZUNZUNWALA

A-2, Old Midc, Jalna, Maharashtra, India - 431203

Call Us: 08043693385, +91-2482-234288

Fax: +91-2482-230398

Web: <http://www.safalseedsbiotech.com>

Web Page: <http://www.exportersindia.com/safalseedsbiotech>