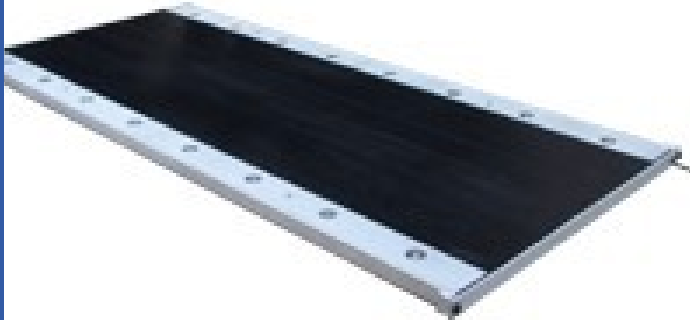


# Bending Plate Weigh in Motion

## Features



- Test speed from 5km/h to 60km/h
- High dynamic response frequency and boarder measuring range.
- Low profile, light weight,easy installation
- Confidence coefficient: 95% Test precision: Standard ASTME1318
- Flow error:< 1%
- Axle distance error:  $\pm 150\text{mm}$
- Sensor service life:  $\geq 20000,000$  times
- Equipment service life:  $\text{MTBF} \geq 20.000\text{h}$
- Working Voltage:  $\text{AC}220\text{V} \pm 10\%$ ,  $50\text{HZ} \pm 4\text{HZ}$
- Environmental temperature:  $-40 \sim 80^\circ\text{C}$  Humidity: 0-95%
- High reliability,IP68
- APPLICATIONS: Axle and wheel of vehicle inspection on road or bridge.Inspecting and controlling vehicle load via computer system
- Pre-inspection on highway,Test the speed,axle weight,total weight of the vehicle without stopping

## Parameters

Dynamic Precision (%F.S): $\pm 5$ (1~60km/h)	Insulation resistance: $\geq 5000\text{M}\Omega(100\text{VDC})$
Lateral consistency.(%F.S): 1.0	Net weight:150kg
Rated output(mV/V): $0.6 \pm 0.1$ & $1.2 \pm 0.1$	Compensated temp.range: $-10^\circ\text{C} \sim +60^\circ\text{C}$
Non-linearity(%F.S): 0.2	Use temp.range: $-20^\circ\text{C} \sim +80^\circ\text{C}$
Error on corners(%F.S): 0.2	Temp.effect on zero(F.S/10°C): 0.1
repeatability(%F.S): 0.2	Temp.effect on span:(F.S/10°C): 0.1
Zero balance(%F.S): $\pm 1$	Safe overload(%): 150
Excitation voltage(VDC): 5~15	Ultimate overload: 200%
Recommended voltage(V): 10	Defense class: IP68

## NAGARJUN TECHNOVISION

476 Old Avas Vikas  
Kashipur Uttarakhand India-244713  
sales@nagarjuntechnovision.in  
www.nagarjuntechnovision.com  
+91-8192986986