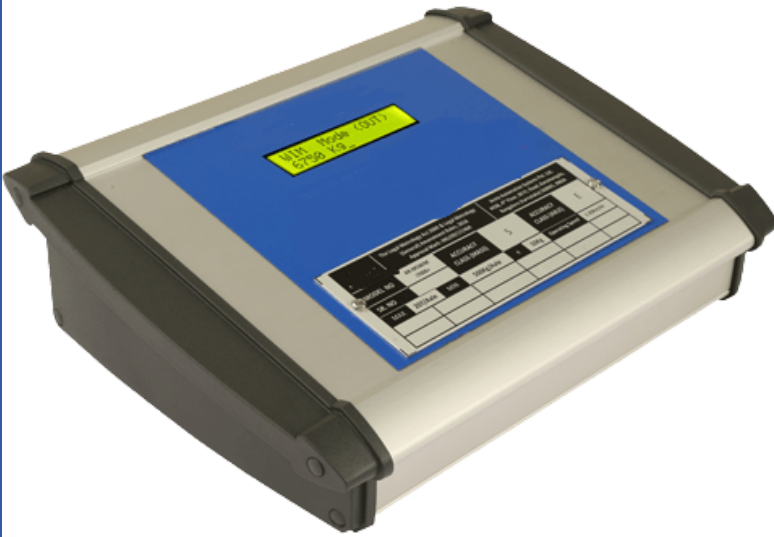


Weight Indicator



Key Specifications

Load Cell:

- Configuration: 4/6 wire
- Excitation: 5V DC for 4 loads cells of 350 to 700 .
- •Sensitivity: 1/2/3 mV/V.
- Galvanic Isolation: 1000V RMS for 1min.

Ethernet

- Communication rate: 10 Mb/s, 100 Mb/s auto-negotiated
- Maximum cabling distance: 100 m/segment
- Compatibility: IEEE 802.3

RS232:

- Maximum Baud rate- 230,400 bps
- Maximum cabling distance: 5m

Power:

- Supply Voltage range: 19V to 25V DC
- Consumption: 15W

Environmental: For indoor use only

Ingress Protection: IP50

Operating Temperature: 0°C to 55°C

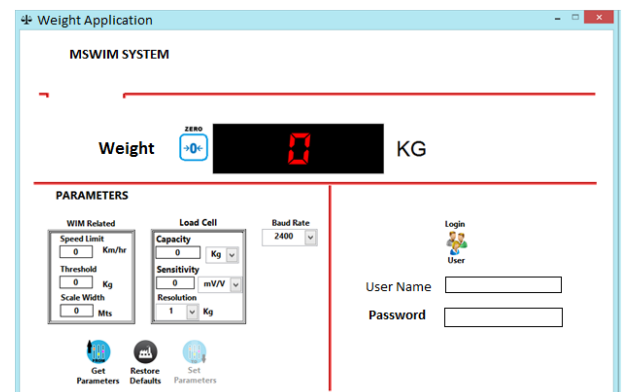
Operating Humidity: 10% to 90% RH non- condensing.

Features

- Galvanic isolation of measurement front end for better accuracy & improved reliability. Inbuilt secondary protection against lightning.
- On board EMI filters for reduced interference from pick-up noise.
- Very Low Noise, high speed 24 bit, ADC with integrated PGA.
- 16X2 LCD display for status & weight
- 10/100BASE-TX Ethernet port with built-in FTP and HTTP servers for system update & configuration.
- TCP/IP ,RS-232 DTE Serial Port with arbitrary baud rate support for peripheral devices.
- – Password protected multi-dimensional calibration for variation due to load cell and vehicle dynamics.

Software

MSWIM Calibration software is included with each Indicator



NAGARJUN TECHNOVISION

476 Old Avas Vikas

Kashipur Uttarakhand India-244713

sales@nagarjuntechnovision.in

www.nagarjuntechnovision.com