



**BLUBUD<sup>®</sup>**

**F e e l T h e H e a l**

# **CATALOGUE 2025**

Pain Management Aids  
Rehabilitation Aids  
Immobilizers  
Traction Kits







**PINKBUD ORTHOTICS PVT. LTD** Was founded in 2016. We are dedicated to improving the quality of life for individuals by providing innovative, high-quality orthopedic products. With years of expertise in the medical device industry, we specialize in designing and manufacturing a wide range of orthopedic solutions, including joint supports, braces, prosthetics, and rehabilitation devices.

### **Our Brand:**

At **BLUBUD**, represents trust, excellence, and a commitment to advancing the field of orthopedics. From preventive care to post-surgical recovery, our products are designed with the latest research and cutting-edge materials to ensure comfort, durability, and maximum support. Whether it's a custom-fit orthopedic brace or an advanced prosthetic device, we provide products that meet the diverse needs of our customers, including hospitals, clinics, sports teams, and individual patients.

### **Mission:**

Our mission is to offer products that not only meet the highest standards of safety and performance but also enhance the mobility and comfort of our customers. We strictly follow international standards and sources only the highest quality materials to develop our products to deliver durable, reliable, and effective orthopedic solutions for patients of all ages and activity levels.

### **Our Vision:**

At **PINKBUD ORTHOTICS PRIVATE LIMITED**, our clients are at the heart of everything we do. We are committed to reliability, efficiency, and client satisfaction. Providing world class and innovative solutions in Orthopedics and allied fields through focus on Research and Development. To work in collaboration with academic and medical fraternity to improve health care standards.





# CONTENTS

01

## ABDOMEN SUPPORT



Abdominal Support  
Tummy Trimmer / Abdominal Belt  
Pregnancy Back Support  
Hernia Belt  
Scrotal Support  
Elite Pregnancy Memory Pillow  
Abs Support (Neo)  
Abs Binder Adjustable (Neo)

04

## Ankle and Foot Support



Ankle Support  
Ankle binder  
Insole full (Gel)  
Ankle Wrap  
Heel Cushion Gel Cup  
Heel Pad Plain  
3d Anklet Comfeel Pair  
Arch Support Semi Pro (Pair)  
Bunion Splint  
Toe Separator Silicone (Pair)  
Ankle Support (Neo)  
3D Ankle Support  
3D Ankle Binder  
Ankle Support (Neo Sport)  
Walker Boot Air- Short  
Walker Boot Air-Long  
PF Night Splint Derotation  
Ankle Splint  
Air Ankle Splint  
Foot Drop Splint Right/Left  
Ankle Brace  
Cast Shoe Rocker Sole  
Ankle Wrap (Neo)  
Diabetic Socks  
Diabetic Socks With Anti Skid

8

## SPINE SUPPORT



Contoured L.S. Support  
Rib Belt  
Lumbo Sacral Belt  
Chest Binder  
Dorso Lumbar Brace  
Ash Brace  
Posture Corrector  
Back Rest  
Coccyx Cushion Seat  
Lumbo Support Uni

11

## CERVICAL SUPPORT



Cervical Collar Neck Support  
Cervical Collar Soft Boneless  
Cervical Collar Hard  
Cervical Pillow (Memory Foam)  
Cervical Pillow Regular  
Cervical Orthosis ( Philadelphia collar)  
Cervical Traction Kit + Weight Bag (Sleeping)

13

## SHOULDER & CLAVICLE SUPPORT



Shoulder Support (Neoprene)  
Elastic Shoulder Immobilizer  
Universal Shoulder Immobilizer  
Clavicle Brace  
Clavicle Brace with Buckle

15

## ARM & ELBOW SUPPORT



Pouch Arm Sling (Tropical)  
Pouch Arm Sling (Baggy)  
Elbow Support  
Tennis Elbow Support  
Forearm Splint  
Tourniquet  
Arm Immobilizer

# CONTENTS

## 18 WRIST, FINGERS & THUMB SUPPORT

Wrist Brace (Neoprene)  
Wrist Brace  
Wrist Brace with Thumb Support  
Wrist Brace with Thumb Support (Neoprene)  
Wrist & Forearm Splint (Right/Left)  
Elastic Wrist Splint (Right/Left)  
Finger Cot Splint  
Finger Extension Splint  
Frog Splint  
Mallet Finger Splint  
Thumb Spica Splint  
Exercise Gel Ball ( Soft/Medium/Hard)  
Weight Cuff

## 22 PELVIC & HIP SUPPORT

Pelvic Binder  
Pelvic Traction Kit + Weight Bag  
Traction Weight Bag  
Leg Traction Brace

## 23 THIGH, KNEE ANKLE & CALF SUPPORT

Skin Traction Set (PUF Liner)  
Thigh Support  
Ankle Brace  
Ankle Binder  
Anklet  
Knee Cap  
Knee Cap Open Patella  
Knee Cap Rigid Hinge  
Knee Wrap (Neoprene)  
Knee Wrap Hinged ( Neoprene)  
Elastic Knee Support  
Patellar Support

Compression Stocking Mid Thigh  
Compression Stocking Below Knee  
Medical Compression Stocking Mid Thigh - Classic  
Medical Compression Stockings Below Knee - Classic  
Prosthetic Compression Stocking Above Knee / Below Knee  
Knee Immobilizer (14")  
Knee Immobilizer (19")  
Knee Immobilizer (22")  
R.O.M. Knee Brace (22")  
Calf Support

## 28 PHYSIO AIDS

Exercise Band (Actiband)  
Cotton Bandage

## 29 HOT & COLD THERAPY AIDS

Hot & Cold Pack

## 30 Disposable

Disposable 3 Ply Face Mask  
Cotton Crepe Bandage B.P. (Acticrepe)

## 31 ABSORBENT COTTON WOOL I.P





# ABDOMEN SUPPORT



## Abdominal Support

BLUBUD abdominal Support is perfect for postoperative conditions of the abdomen and post-delivery umbilical and ventral hernias. Thin construction in single panel, remains inconspicuous through clothes. Strong & Porous elastic webbing ensures good compression, improves ventilation and comfort. Broad hook loop tape flapper offers secured holding and size adjustability. Designed in nice shades of grey for pleasing aesthetics. Nylon reeves prevent rolling over of belt.

**Quantity**  
**1 Pcs**

SIZE	INCHES	CENTIMETERS
Small	28 to 34	70 to 85
Medium	34 to 40	85 to 100
Large	40 to 46	100 to 115
Extra Large	46 to 52	115 to 130
Extra Extra Large	52 to 58	130 to 145

\*Measure the circumference of the abdomen at the naval point

REF BB-01



## Tummy Trimmer / Abdominal Belt

Optimal Compression of our Tummy Trimmer binds surgical incisions and helps heal abdomen and chest. Extra strong three panel elastic provides a strong compression, improved ventilation and comfort. Optimal compression binds surgical incisions, improves healing, provides comfort during sudden movements or coughing in thoracic surgeries. Can be used to compress the bulge or tone up abdominal muscles.

**Quantity**  
**1 Pcs**

SIZE	INCHES	CENTIMETERS
Small	28 to 34	70 to 85
Medium	34 to 40	85 to 100
Large	40 to 46	100 to 115
Extra Large	46 to 52	115 to 130
Extra Extra Large	52 to 58	130 to 145
Universal	28 to 46	70 to 115
Special	46 to 58	110 to 145

\*Measure the circumference of the abdomen at the naval point

REF BB-17



## Pregnancy Back Support

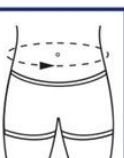
This Pregnancy Back Support provides relief of hip and pelvic pain through sufficient stretching and gentle compression to reduce bladder pressure and spread the baby's weight.

**Quantity**  
**1 Pcs**

SIZE	INCHES	CENTIMETERS
Small	32 tp 38	80 to 95
Medium	38 to 44	95 to 110
Large	44 to 50	110 to 125
Extra Large	50 to 56	125 to 140
Extra Extra Large	56 to 62	140 to 155

\*Measure the circumference 3" below naval

REF BB-27



## Hernia Belt

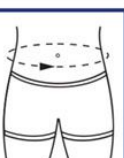
Designed for a comfortable and supportive fit our hernia belt is lightweight and features adjustable pelvic and leg straps.

**Quantity**  
**1 Pcs**

SIZE	INCHES	CENTIMETERS
Small	28 to 34	70 to 85
Medium	34 to 40	85 to 100
Large	40 to 46	100 to 115
Extra Large	46 to 52	115 to 130
Extra Extra Large	52 to 58	130 to 145

\*Measure the circumference 3" below naval

REF BB-29





### Scrotal Support

Fabricated extra-soft and hypoallergenic materials, our scrotal support is well-ventilated to allow for ease of use and extended wear comfort.

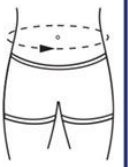


**Quantity**  
**1 Pcs**

SIZE	INCHES	CENTIMETERS
Small	28 to 34	70 to 85
Medium	34 to 40	85 to 100
Large	40 to 46	100 to 115
Extra Large	46 to 52	115 to 130
Extra Extra Large	52 to 58	130 to 145

\*Measure the circumference 3" below naval

**REF BB-32**



### Elite Pregnancy Memory Pillow

Provides comfortable support to the belly bump while lying on the side, ensuring a restful and blissful sleep. Filling the between the belly bump and mattress it reduces the pain and strain on lower back muscles.

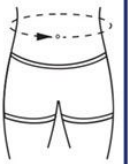


**Quantity**  
**1 Pcs**

SIZE	INCHES	CENTIMETERS
Small	28 to 34	70 to 85
Medium	34 to 40	85 to 100
Large	40 to 46	100 to 115
Extra Large	46 to 52	115 to 130
Extra Extra Large	52 to 58	130 to 145

\*Measure the circumference of the abdomen at the naval point

**REF BB-01**



### Abs Support (Neo)

BLUBUD Abs Support (Neo) is designed to support the abdomen and lower back muscle during the workout and sporting activities. It compresses and supports abdominal muscles and helps to build strong core. It protects the abdomen and lower back muscles from strain and fatigue during high impact physical activities. It strengthens core muscles, improves muscle tone and helps in reduction of waist line.

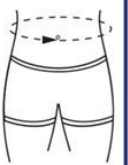


**Quantity**  
**1 Pcs**

SIZE	INCHES	CENTIMETRES
UNIVERSAL	28 to 24	70 to 110

\*Measure circumference around the waist immediately below navel

**REF BB-S-11**



#### Available Color



### Abs Binder Adjustable (Neo)

BLUBUD Abs Binder Adjustable (Neo) comes with unique adjustable design to provide customizable fitting and support to Abs and lower back muscles during workout and sporting activities. Two piece design ensures, that one size fits all. It protects the abdomen and lower back muscles from strain and fatigue during high impact physical activities. Broad enough to provide wide coverage of abdomen for enhanced effectiveness and support.

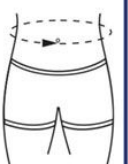


**Quantity**  
**1 Pcs**

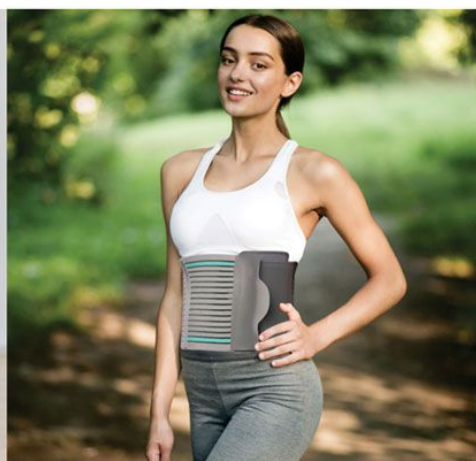
SIZE	INCHES	CENTIMETRES
UNIVERSAL	28 to 24	70 to 110

\*Measure circumference around the waist immediately below navel

**REF BB-S-12**



#### Available Color





# Ankle and Foot Support



## Ankle Support

**BLUBUD Ankle Support** Provides perfect compression and support to ankle to allay pain. Four way stretchable fabric ensures quick healing, perfect fitting, uniform & effective compression. Bi layered construction to provide effective performance and enhanced comfort in all weather conditions. Thick construction retains body heat and provides therapeutic warmth. Easy to use, washable, good aesthetics, light weight, long functional life and durable.

### Quantity

1 Pair

SIZE	INCHES	CENTIMETRES
Small	7.2 to 8.4	18 to 21
Medium	8.4 to 9.6	21 to 24
Large	9.6 to 10.8	24 to 27
Extra Large	10.8 to 12.0	27 to 30

\*Measure the circumference approx 2 inches above the inner ankle joint



REF BB-09

• Skin Colour



• Black



## Ankle Binder

**BLUBUD Ankle Binder** Provides controlled & strong compression, perfect fitting and comfortable ankle movement. 3D construction and anatomical shape provides perfect conformance to the complex anatomy of ankle. It reduce the risk of sprains and ankle injury. Elasticized wrap in figure of eight stabilizes ankle, controls inversion / aversion & plantar flexion. Nylon outside ensures durability & nice aesthetics.

### Quantity

1 Pcs

SIZE	INCHES	CENTIMETRES
Small	7.2 to 8.4	18 to 21
Medium	8.4 to 9.6	21 to 24
Large	9.6 to 10.8	24 to 27
Extra Large	10.8 to 12.0	27 to 30

\*Measure the circumference approx 2 inches above the inner ankle joint



REF BB-12



## Insole Full (Gel)

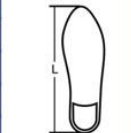
**BLUBUD Insole Full (Gel)** Extreme cushioning for sensitive neuropathic feet, transfers body weight from heel to toe, provides comfort and protection. Made of medical grade silicone for durability and comfort. Soft Spots relieves pressure at the base of the Calcaneus, provides focused pain relief. Optimal thickness for effective cushioning. Can conveniently be put into shoes.

### Quantity

1 Pair

SIZE	EUROPEAN	AMERICAN
Small	34 to 36	2.8 to 4.4
Medium	37 to 39	5.3 to 6.8
Large	40 to 42	7.5 to 9.0
Extra Large	43 to 45	9.8 to 11.5

\*Measure Shoe Size



REF BB-13



## Ankle Wrap

**BLUBUD Ankle Wrap** provide support in ankle sprain, Swelling in ankle Muscle & Ligament Injury. This figure of 8 straps help to give support to injured ankle.

### Quantity

1 Pcs

SIZE	INCHES	CENTIMETRES
Small	5.9 to 7.8	15 to 20
Medium	8.3 to 9.8	21 to 25
Large	10.2 to 12.0	26 to 30
Extra Large	14.1 to 16.0	31 to 35

\*Measure around the ankle



REF BB-14



### Heel Cup (Gel Cushion)

BLUBUD Heel Cup (Gel Cushion) Help in correcting the alignment while walking, absorbs shock and give right elevation to the heel. Made of medical grade silicone for durability and comfort.

**Quantity**

**1 Pair**

SIZE	EUROPEAN	AMERICAN
Small	34 to 36	2.8 to 4.4
Medium	37 to 39	5.3 to 6.8
Large	40 to 42	7.5 to 9.0
Extra Large	43 to 45	9.8 to 11.5

\*Measure Shoe Size

REF BB-15



### Heel Pad Plain

BLUBUD Heel Pad Plain Target heel pain attributed towards multiple ailments like plantar fasciitis or otherwise due to tiredness. Wedge design elevates the heel for pain relief associated with Achilles Tendonitis.

**Quantity**

**1 Pair**

SIZE	EUROPEAN	AMERICAN
UNIVERSAL	34 to 45	2.8 to 11.75

\*Measure Shoe Size

REF BB-16



### 3DAnklet Comfeel

BLUBUD 3D Anklelet Comfeel knitting with mellowed heel spot, ensures snug fitting, strong compression, comfortable ankle movement and perfect conformance to the complex anatomy of the ankle. Dermophilic cotton inside ensures, comfort in all weather conditions. Nylon outside ensures durability, excellent aesthetics & color fastness. Two layered with interwoven air space retains therapeutic warmth. Pleasing aesthetics is a further advantage.

**Quantity**

**1 Pair**

SIZE	INCHES	CENTIMETRES
Small	7.2 to 8.4	18 to 21
Medium	8.4 to 9.6	21 to 24
Large	9.6 to 10.8	24 to 27
Extra Large	10.8 to 12.0	27 to 30

\*Measure the circumference approx 2 inches above the inner ankle joint

REF BB-23



### Arch Support

BLUBUD Arch Support Silicone Easy stick on application, optimal curvature for effective arch support, comfortable hardness, streamlined shape, matte surface for good grip to the foot. Molded out of strong transparent elastomer for long functional life, it is odorless and hypoallergenic with pleasing aesthetics. Easy to clean and maintain.

**Quantity**

**1 Pair**

SIZE	EUROPEAN	AMERICAN
Small	34 to 36	2.8 to 4.4
Medium	37 to 39	5.3 to 6.8
Large	40 to 42	7.5 to 9.0

\*Measure Shoe Size

REF BB-80



### Bunion Splint

BLUBUD Bunion splint is designed to correct the Hallux Valgus deformity of the big toe. On wearing, the toe is stretched in an overcorrected position, leading to elongation of soft tissues around the big toe, the mal-positioning is corrected over time. The device can also be worn as post-operative aid after bunion surgery to stabilize the corrected alignment. Dynamic hinge action keeps the foot flexible, so can be worn during walking. It is good, both as a day or night splint.

**Quantity**

**1 Pcs**

**SIZE**

**UNIVERSAL**

REF BB-92





### Toe Separator

BLUBUD Toe Separator Silicone is expertly designed to provide relief from toe pain and discomfort. Made with high-quality silicone, it gently separates toes to promote proper alignment and improve overall foot health. Say goodbye to irritation and say hello to comfortable and healthy feet with this pair of toe separators.

#### Quantity

1 Pair

SIZE	EUROPEAN	AMERICAN
Small	34 to 36	2.8 to 4.4
Medium	37 to 39	5.3 to 6.8
Large	40 to 42	7.5 to 9.0

\*Measure Shoe Size

REF BB-81



### Ankle Support (Neo)

BLUBUD Ankle support (Neo) compression and controlled immobilization to weak or injured ankles. The stabilizing splint supports the ankle where it most needs to prevent an ankle injury. it can be used in high-impact sporting activities or by individuals with common repetitive ankle injuries. It also helps to control swelling, odema or sprains and rollovers of the ankle.

#### Quantity

1 Pcs

SIZE	INCHES	CENTIMETRES
UNIVERSAL	7.2 to 12.0	18 to 30

\*Measure the circumference approx 2 inches above the inner ankle joint

REF BB-93



### 3D Ankle Support

BLUBUD 3D Ankle Support can be used for ankle pain relief, acute ankle injury, ankle sprain, ankle strain, swelling in the ankle, provide support and compression to ankle joint during sports, athletics and running activities. It reduce the risk of sprains and ankle injury. Four way stretchable fabric ensures quick healing, perfect fitting uniform & effective compression. Breathable & skin-friendly.

#### Quantity

1 Pair

SIZE	INCHES	CENTIMETRES
Small	7.2 to 8.4	18 to 21
Medium	8.4 to 9.6	21 to 24
Large	9.6 to 10.8	24 to 27
Extra Large	10.8 to 12.0	27 to 30

\*Measure the circumference approx 2 inches above the inner ankle joint

REF BB-S-03



### 3D Ankle Binder

BLUBUD 3D Ankle Binder Provides controlled & strong compression, perfect fitting and comfortable ankle movement. 3D construction and anatomical shape provides perfect conformance to the complex anatomy of ankle. It reduce the risk of sprains and ankle injury. It is designed for maximum breath ability and comfort. Sleek design it easily gets accommodated into a normal shoe. Elasticized wrap improves ankle stability and controls inversion/aversion injuries.

#### Quantity

1 Pcs

SIZE	INCHES	CENTIMETRES
Small	7.2 to 8.4	18 to 21
Medium	8.4 to 9.6	21 to 24
Large	9.6 to 10.8	24 to 27
Extra Large	10.8 to 12.0	27 to 30

\*Measure the circumference approx 2 inches above the inner ankle joint

REF BB-S-04



### Ankle Support (Neo Sport)

BLUBUD Ankle Support (Neo) provides firm and evenly distributed compression, support and protection to the ankle during sports, athletics and running activities thus reducing the risk of sprains and ankle injury. It retains body heat and increases blood circulation around ankle joint which helps in quick healing and early recovery from injuries during sporting activity. It has an open heel and toe design which allows complete range of motion to enhance sporting performance.

#### Quantity

1 Pcs

SIZE	INCHES	CENTIMETRES
UNIVERSAL	7.2 to 12	18 to 30

\*Measure the circumference approx 2 inches above the inner ankle joint

REF BB-S-09



#### Available Color



### Walker Boot Air- Short

BLUBUD Walker Boot Air-Short provide ankle deloading, immobilization and support to the fractured ankle/lower leg. Walker boot can be a substitute for cast or can be used in case of early cast removal, It helps in early ambulation of the patient with ankle/lower leg fractures. With a wider rocker bottom, these boots promote a natural gait, reduced plantar pressure, enhanced stability and comfort to the lower leg.

**Quantity**

**1 Pcs**

SIZE	EUROPEAN	AMERICAN
Small	34 to 36	2.8 to 4.4
Medium	37 to 39	5.3 to 6.8
Large	40 to 42	7.5 to 9.0

\*Measure Shoe Size

REF BB-95

### Walker Boot Air-Long

BLUBUD Walker Boot Air-Long provide ankle deloading, immobilization and support to the fractured ankle/lower leg. Walker boot can be a substitute for a cast or can be used in case of early cast removal, It helps in early ambulation of the patient with ankle/lower leg fractures. With a wider rocker bottom, these boots promote a natural gait, reduced plantar pressure, enhanced stability and comfort to the lower leg.

**Quantity**

**1 Pcs**

SIZE	EUROPEAN	AMERICAN
Small	34 to 36	2.8 to 4.4
Medium	37 to 39	5.3 to 6.8
Large	40 to 42	7.5 to 9.0

\*Measure Shoe Size

REF BB-96

### PF Night Splint Derotation

BLUBUD PF Night Splint Derotation Designed for rehabilitation after injury, fracture, sprains or surgery of foot, ankle or lower leg to prevent plantar flexion, when required. It supports lifting the ankle, constraining the plantar flexion, and enabling prevention of conditions like foot drop or contractures on prolonged bed rest.

**Quantity**

**1 Pcs**

SIZE	EUROPEAN	AMERICAN
Small	34 to 36	2.8 to 4.4
Medium	37 to 39	5.3 to 6.8
Large	40 to 42	7.5 to 9.0

\*Measure Shoe Size

REF BB-97

### Ankle Splint

BLUBUD Ankle Splint is designed to immobilize, support and stabilize the ankle joint. in injury, or offer protection to people prone to ankle injuries. Rigid exoskeleton shell design gives better protection and control of the inversion or aversion of the ankle.

**Quantity**

**1 Pcs**

SIZE	INCHES	CENTIMETRES
UNIVERSAL	7.2 to 12	18 to 30

\*Measure the circumference approx 2 inches above the inner ankle joint

REF BB-98

### Air Ankle Splint

BLUBUD Air Ankle Splint immobilize, support and stabilize the ankle joint. in injury, or offer protection to people prone to ankle injuries, while providing perfect air cushioning.

**Quantity**

**1 Pcs**

SIZE	INCHES	CENTIMETRES
UNIVERSAL	up to 14.5	up to 38

\*Measure the circumference approx 2 inches above the inner ankle joint

REF BB-99



## Foot Drop Splint Right/Left

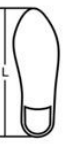
**BLUBUD** Foot Drop Splint is designed with a dorsal shell made of polypropylene with a leaf spring action to arrest the plantar flexion movement and lift the foot. It supports and stabilizes the ankle and foot in all foot drop conditions. Designed to aid in swing phase toe clearance and to reduce plantar flexion impact in the early stance.



**Quantity**  
**1 Pcs**

SIZE	EUROPEAN	AMERICAN
Small	34 to 36	2.8 to 4.4
Medium	37 to 39	5.3 to 6.8
Large	40 to 42	7.5 to 9.0
Extra Large	43 to 45	9.8 to 11.5
*Measure Shoe Size		

REF BB-79



## Ankle Brace

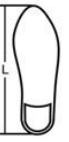
**BLUBUD** Ankle Brace Easy to wear and remove brace made of rigid polypropylene material for strong immobilization. Figure of eight strap provides additional binding, extra protection and stabilization.



**Quantity**  
**1 Pcs**

SIZE	EUROPEAN	AMERICAN
Small	34 to 36	2.8 to 4.4
Medium	37 to 39	5.3 to 6.8
Large	40 to 42	7.5 to 9.0
Extra Large	43 to 45	9.8 to 11.5
*Measure Shoe Size		

REF BB-63



## Cast Shoe Rocker Sole

**BLUBUD** Cast Shoe Rocker Sole is Replaces the functions of the normal shoe when the patient is on a foot cast. It prevents excessive wear & tear of the cast and reduces impact on the injured leg. It ensures high hygiene and improves the patient's gait on the foot cast. The design ensures easy wearing and removal.



**Quantity**  
**1 Pcs**

SIZE	EUROPEAN	AMERICAN
Small	34 to 36	2.8 to 4.4
Medium	37 to 39	5.3 to 6.8
Large	40 to 42	7.5 to 9.0
Extra Large	43 to 45	9.8 to 11.5
*Measure Shoe Size		

REF BB-82



## Ankle Wrap (Neo)

**BLUBUD** Ankle Wrap(Neo) is a universal-sized, lightweight eoprene support designed for all ages. It offers enhanced compression, anatomical fitting, and stylish aesthetics, making it perfect for anyone looking to alleviate ankle pain while maintaining an active lifestyle.



**Quantity**  
**1 Pcs**

SIZE	INCHES	CENTIMETRES
UNIVERSAL	7.2 to 12	18 to 30

\*Measure the circumference approx 2 inches above the inner ankle joint



REF BB-100

## Diabetic Socks

**BLUBUD** Diabetic Socks Useful for those with diabetes & more prone to foot injuries & infections because of damage to their circulatory, nervous & immune systems. Specially designed to reduce the risk of a foot injury, keep the feet dry and maximize blood flow.

REF BB-101

**Quantity**  
**1 Pair**

**SIZE**  
**UNIVERSAL**



## Diabetic Socks With Anti Skid

**BLUBUD** Diabetic Socks with Anti-skid is recommended during old age or for people suffering from diabetes, arthritis or experiencing foot pain and sensitive feet. The product is seamlessly designed with elastomer grips at the bottom offering better grip while walking.

REF BB-102

**Quantity**  
**1 Pair**

**SIZE**  
**UNIVERSAL**





# Spine Support




## Contoured L.S. Support

This Contoured Lumbo-Sacral Support is ideal for postoperative care of lumbar spine and for lower back pain, strain or sprains.

### Indications:

- Postoperative care of the lumbar spine.
- Low back pain.
- Low back sprains/strains.
- Lumbar disc injury.
- Degenerative Disc Disease.
- Herniated Disc or PIVD.



SIZE	INCHES	CENTIMETERS
S	28 to 34	70 to 85
M	34 to 40	85 to 100
L	40 to 46	100 to 115
XL	46 to 52	115 to 130
XXL	52 to 58	130 to 145

\*Measure circumference around the navel.

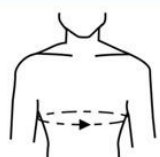


## Rib Belt

Designed with a splinting pad for comfort, our Rib Belt is useful in aiding the healing process in rib fracture, relieving chest pain, and intercostal muscle strain.

### Indications:

- Postoperative conditions of the abdomen.
- Post-delivery.
- Umbilical and ventral hernia.



SIZE	INCHES	CENTIMETERS
S	28 to 34	70 to 85
M	34 to 40	85 to 100
L	40 to 46	100 to 115
XL	46 to 52	115 to 130
XXL	52 to 58	130 to 145

\*Measure circumference around the chest




## Lumbo Sacral Belt

Our lumb-sacral belt is used to comfortably maintain correct posture and support the lower back while sitting, walking or driving.

### Indications:

- Postoperative conditions of the abdomen.
- Post-delivery.
- Umbilical and ventral hernia.



SIZE	INCHES	CENTIMETERS
S	28 to 34	70 to 85
M	34 to 40	85 to 100
L	40 to 46	100 to 115
XL	46 to 52	115 to 130
XXL	52 to 58	130 to 145

\*Measure the circumference of the abdomen at the naval point





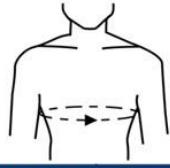


## Chest Binder

Chest Binder is applied to the thoracic region to compress and bind the rib cage and provide splinting to the sternum while allowing sufficient flexibility for comfortable breathing

### Indications:

- Pain due to chest injury.
- Rib Fractures.
- Osteoporosis.



SIZE	INCHES	CENTIMETERS
S	28 to 34	70 to 85
M	34 to 40	85 to 100
L	40 to 46	100 to 115
XL	46 to 52	115 to 130
XXL	52 to 58	130 to 145

*\*Measure circumference around the chest below underarms*



REF BB-22

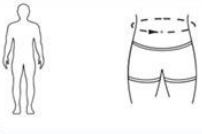


## Dorso Lumbar Brace

Features anatomically contoured splints for precise immobilization and clavicle straps with cotton stockinet to correct shoulder posture alignment.

### Indications:

- Postural deformity.
- Osteoporosis of the spine.
- Postoperative spine care.
- Mild lumbar and thoraces injury.
- Degenerative Disc Disease.
- Herniated Disc or PIVD.



SIZE	Feet	CENTIMETERS
Shorts	4.6 - 5.6 Ft.	140-171
Long	5.6 - 6.6 Ft.	171-201

*\*Measure height of the patient*

SIZE	Inches	CENTIMETERS
Universal	28-44	71-112
Special	44-52	112-132

*\*Measure circumference around the navel*



REF BB- 28

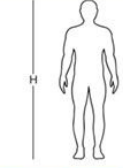


## Ash Brace ( Hyper Extension Brace)

Our Ash Brace is aerodynamically shaped with telescoping, aluminum section, and malleable horizontal main body to form a cross bar.

### Indications:

- Osteoporotic Bone Collapse.
- Ankylosing Spondylitis.
- Conservative management of Vertebral Bone Tuberculosis.
- Postoperative, post-traumatic, or chronic spinal pathology.
- Complications of thoracolumbar junction which needs moderate Immobilization.

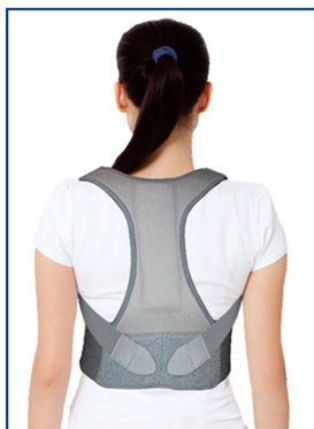


SIZE	INCHES	CENTIMETERS
Universal Short	Up to 5.6 Ft	Up to 165
Universal Long	Above 5.6 Ft	Above 165

*\*Measure height of the patient*



REF BB- 30

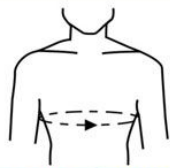


## Posture Corrector

Designed to correct slouching and improve posture.

### Indications:

- Back pain.
- Spine misalignment.
- Lumbar pain.
- Poor posture.



SIZE	INCHES	CENTIMETERS
CH	22 to 28	56 to 71
S	28 to 34	71 to 85
M	34 to 40	85 to 100
L	40 to 46	100 to 115
XL	46 to 52	115 to 130

*\*Measure circumference around the chest below underarms*



REF BB- 33





## Back Rest

*Promotes good posture and correct spinal alignment by allowing the spine to follow natural curve.*

### Indications:

- Postoperative discomfort.
- Post-injury pain.
- Poor posture.
- Lower back pain.
- Pregnancy discomfort.

SIZE	CENTIMETERS
Universal	152 to 192



## Coccyx Cushion Seat

*The high-density foam of our coccyx cushion features a U-shaped cut that gently suspends your coccyx to relieve pressure on your spinal cord.*

### Indications:

- Pudendal nerve entrapment pain.
- Chronic pelvic pain syndrome.
- Rectal Surgery.
- Prostatitis.
- Anal Surgery.
- Coccyx fracture.
- Hemorrhoids.
- Interstitial Cystitis.
- Pelvic floor pain.
- Pressure sores.

SIZE	Inches (LXBXH)	CM (LXBXH)
Universal	16.4X16.5X2.7	41.7X42X7




## Lumbo Support

*Our Lumbo Support is used to comfortably maintain correct posture and support the lower back while sitting, walking or driving.*

### Indications:

- Postoperative conditions of the abdomen.
- Post-delivery.
- Umbilical and ventral hernia.

		
SIZE	Inches	CENTIMETERS
Universal	28-44	71-112
Special	44-52	112-132
*Measure circumference around the navel		







# CERVICAL SUPPORT AIDS




## Cervical Collar Neck Support

Made of firm density foam covered with a soft, smooth cotton stockinet splint inside for better neck support.

### Indications:

- Cervical Trauma.
- Neck Pain and Stiffness.
- Excessive mobility.
- Rheumatoid Arthritis.
- Strain of neck muscles.
- Whiplash recovery.
- Degenerative disc disease.



SIZE	INCHES	CENTIMETERS
S	3 to 3.5	7.5 to 8.75
M	3.5 to 4	8.75 to 10
L	4 to 4.5	10 to 11.25
XL	4.5 to 5	11.25 to 12

*\*Measure distance between edge of sternum and lower jaw with neck in the extension position*

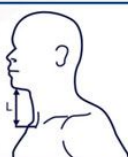


## Cervical Collar Soft Boneless

Made of soft density foam for gentle and cushioned neck support.

### Indications:

- Cervical Trauma.
- Neck Pain and Stiffness.
- Excessive Mobility.
- Rheumatoid Arthritis.
- Stain of Neck Muscles.
- Whiplash Recovery.
- Degenerative Disc Disease.



SIZE	INCHES	CENTIMETERS
S	3 to 3.5	7.5 to 8.75
M	3.5 to 4	8.75 to 10
L	4 to 4.5	10 to 11.25
XL	4.5 to 5	11.25 to 12

*\*Measure distance between edge of sternum and lower jaw with neck in the extension position*




## Cervical Collar Hard

Our hard cervical collar is made of high-quality polyethylene with padded edges moulded with Ethafoam.

### Indications:

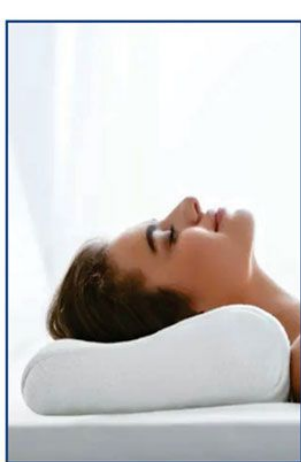
- Cervical Spondylitis.
- Cervical Disc Disease.
- Fracture of cervical spine.
- Whiplash injuries.



SIZE	INCHES	CENTIMETERS
S	3 to 3.5	7.5 to 8.75
M	3.5 to 4	8.75 to 10
L	4 to 4.5	10 to 11.25

*\*Measure distance between edge of sternum and lower jaw with neck in the extension position*



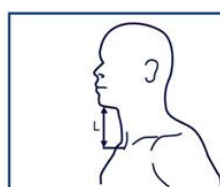


## Cervical Pillow (Memory Foam)

Made of memory foam to provide proper support to the neck region while relaxing or sleeping.

### Indications:

- Temporomandibular disorders.
- Cervical trauma.
- Morning hand stiffness and swelling.
- Whiplash injuries.
- Arthritis.
- Neck pain.



SIZE	INCHES	CENTIMETERS
UN	3 to 4.5	7.5 to 11.25

\*Measure distance between edge of sternum and lower jaw with neck in the extension position



REF BB - 37

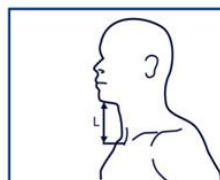


## Cervical Pillow Regular

Provides sustained support to cervical vertebrae during sleep.

### Indications:

- Temporomandibular disorders.
- Cervical trauma.
- Morning hand stiffness and swelling.
- Whiplash injuries.
- Arthritis.
- Neck pain.



SIZE	INCHES	CENTIMETERS
UN	3 to 4.5	7.5 to 11.25

\*Measure distance between edge of sternum and lower jaw with neck in the extension position



REF BB - 38

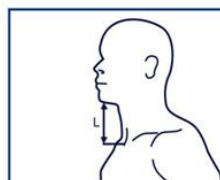


## Cervical Orthosis (Philadelphia Collar)

Made of Ethafoam material to padded support our Philadelphia Collar has a trachea opening in front.

### Indications:

- Cervical trauma.
- Cervical Sprain.
- Cervical Spondylitis.



SIZE	INCHES	CENTIMETERS
S	3 to 3.5	7.5 to 8.75
M	3.5 to 4	8.75 to 10
L	4 to 4.5	10 to 11.25
XL	4.5 to 5	11.25 to 12

\*Measure distance between edge of sternum and lower jaw with neck in the extension position



REF BB - 39



## Cervical Traction Kit + Weight Bag (Sleeping)

With a Width adaptation from 25mm to 50mm, Our Cervical Traction Kit is developed to fit on the top of bed.

### Indications:

- Cervical Spondylitis.
- Cervical Disc Disease.
- Fractures of cervical spine.
- Mechanical stress due to poor posture

SIZE

Universal

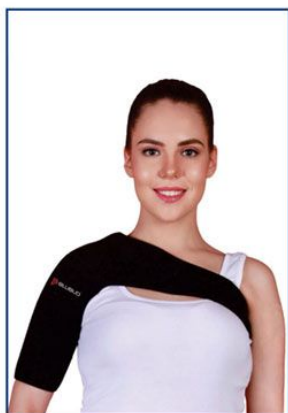


REF BB- 40





# SHOULDER & CLAVICLE SUPPORT

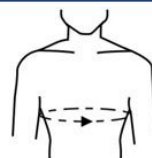


## Shoulder Support (Neoprene)

Made from Neoprene bonded nylon fabric which is four-way stretchable with an anatomical shape to ensure perfect fitting and optimal immobilization.

### Indications:

- Shoulder Injury.
- Rotator cuff injury.
- Shoulder dislocation
- Shoulder inflammation.
- Arthritic pain of the shoulder joint.
- Bursitis and Tendonitis.



SIZE	INCHES	CENTIMETERS
Universal	26 to 40	65 to 100
Special	40 to 52	100 to 130

*\*Measure circumference around the chest below underarms*



REF BB- 41

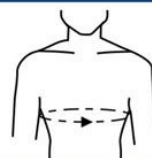


## Elastic Shoulder Immobilizer

Our Elastic Shoulder Immobilizer is made from breathable and moisture transporting weaving fabric.

### Indications:

- Shoulder dislocation.
- Post-surgical immobilization.
- Shoulder joint pain.
- Forearm pain.
- Shoulder sprain.



SIZE	INCHES	CENTIMETERS
S	28 to 34	70 to 85
M	34 to 40	85 to 100
L	40 to 46	100 to 115
XL	46 to 52	115 to 130
XXL	52 to 58	130 to 145

*\*Measure circumference around the chest below underarms*



REF BB- 42

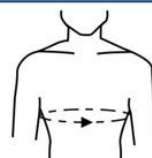


## Universal shoulder Immobilizer

Our Universal Shoulder Immobilizer comes in a flexible size to support shoulder immobilization.

### Indications:

- Shoulder dislocation.
- Post-surgical immobilization.
- Shoulder joint pain.
- Forearm pain.
- Shoulder sprain.



SIZE	INCHES	CENTIMETERS
CH	Below 26	Below 65
Universal	26 to 40	65 to 100
Special	40 to 52	100 to 130

*\*Measure circumference around the chest below underarms*



REF BB- 43

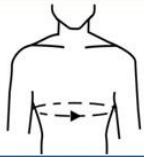


## Clavicle Brace

*Eight-shaped band design of Clavicle Brace is cushioned from soft polyurethane foam padding.*

### Indications:

- Clavicle fracture.
- Clavicle strain.
- Clavicle trauma.
- Poor posture problems.



SIZE	INCHES	CENTIMETERS
CH	22 to 28	56 to 71
S	28 to 34	70 to 85
M	34 to 40	85 to 100
L	40 to 46	100 to 115
XL	46 to 52	115 to 130
XXL	52 to 58	132 to 147

\*Measure circumference around the chest below underarms

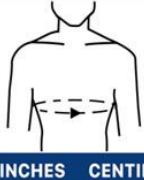


## Clavicle Brace with Buckle

*Eight-shaped band design of Clavicle Brace is cushioned from soft polyurethane foam padding.*

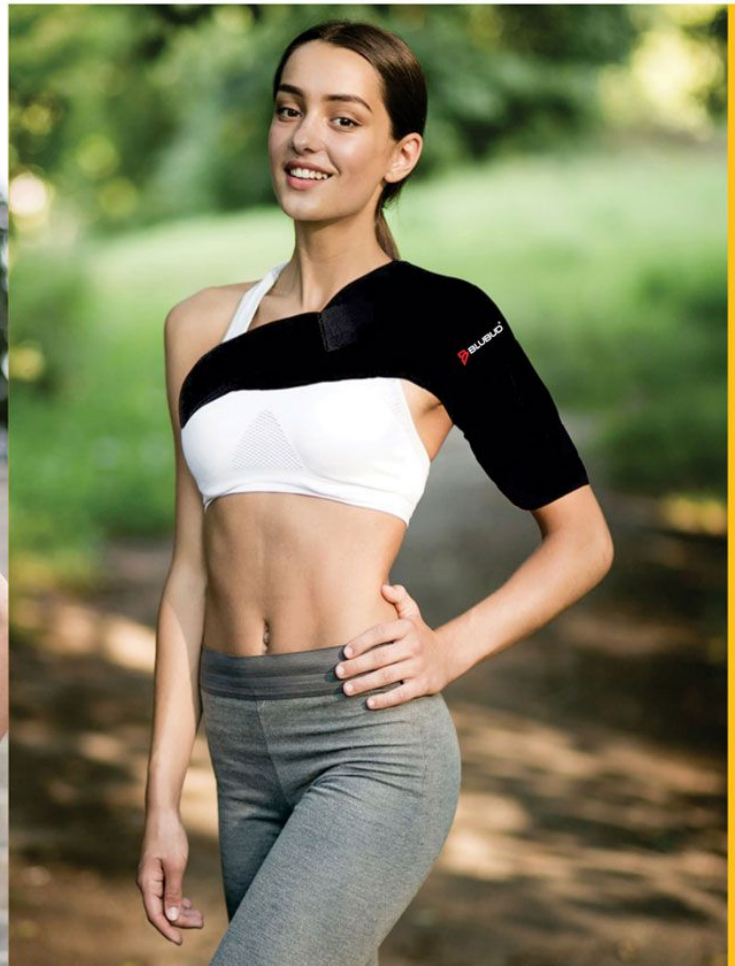
### Indications:

- Clavicle fracture.
- Clavicle strain.
- Clavicle trauma.
- Poor posture problems.



SIZE	INCHES	CENTIMETERS
CH	22 to 28	56 to 71
S	28 to 34	70 to 85
M	34 to 40	85 to 100
L	40 to 46	100 to 115
XL	46 to 52	115 to 130
XXL	52 to 58	132 to 147

\*Measure circumference around the chest below underarms







# ARM & ELBOW SUPPORT

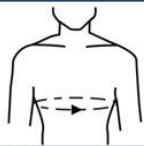


## Arm Sling Pouch (Tropical)

Our Arm Sling Pouch provides comfortable support to the wrist and arm with an adjustable strap with a buckle for proper immobilization.

### Indications:

- Arm Fracture.
- Wrist Fracture.
- Arm & Wrist Sprains.
- Arm/Shoulder immobilization.
- Post-surgery/Post-cast.



SIZE	INCHES	CENTIMETERS
CH	22 to 28	56 to 71
S	28 to 34	71 to 85
M	34 to 40	85 to 100
L	40 to 46	100 to 115
XL	46 to 52	115 to 130
XXL	52 to 58	130 to 147

\*Measure circumference around the chest below underarms

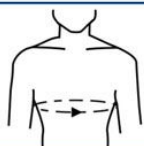


## Arm Sling Pouch (Baggy)

Our Baggy Arm Sling Pouch provides light-weight support to the wrist and arm through a thumb cradle, and an adjustable strap with buckle for proper immobilization.

### Indications:

- Arm Fracture.
- Wrist Fracture.
- Arm & Wrist Sprains.
- Arm/Shoulder immobilization.
- Post-surgery/Post-cast rehabilitation.



SIZE	INCHES	CENTIMETERS
CH	22 to 28	56 to 71
S	28 to 34	71 to 85
M	34 to 40	85 to 100
L	40 to 46	100 to 115
XL	46 to 52	115 to 130
XXL	52 to 58	130 to 147

\*Measure circumference around the chest below underarms

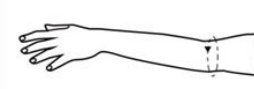


## Elbow Support

Our Elbow Support is made from a soft, elastic material. It provides compression and support for injured tendons.

### Indications:

- Forearm/Elbow pain.
- Post Elbow
- Arthroscopy.
- Sports and workout stress.
- Post-cast rehabilitation.
- Postoperative weakness.
- Arthritis / Bursitis.



SIZE	INCHES	CENTIMETERS
S	7 to 10	18 to 25
M	10 to 12	25 to 30
L	12 to 14	30 to 35
XL	14 to 16	35 to 40

\*Measure circumference approx 2 inches above the inner elbow joint



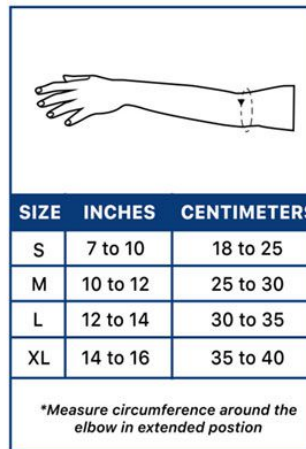


## Tennis Elbow Support

*Our Tennis Elbow Support has adjustable straps and a reverse fastener for a strong grip and custom compression.*

### Indications:

- Tennis/Golf Elbow.
- Tendonitis.
- Swelling.



REF BB - 08

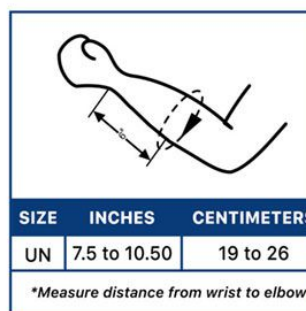


## Forearm Splint

*Our Forearm Splint is made of lasting nylon sleeve supported from within with pliable aluminum, restricts wrist movement, but allows the full extent of motion to the fingers and thumb.*

### Indications:

- Post-cast/Post-surgery protection and rehabilitation.
- Conservative management of Kienbock's disease.
- Rheumatic disease of the wrist.
- Arthritic hand positioning.



REF BB - 47



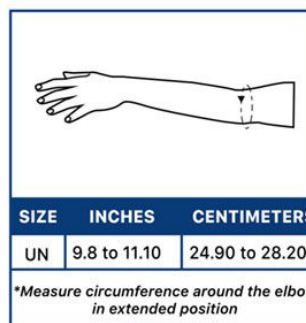
## Tourniquet

(Upper & Lower Extremities)

*Our Tourniquet is padded with soft foam on the inner surface and constructed with a lasting hook & loop strap with a tough polypropylene fastener.*

### Indications:

- Stop constant bleeding.
- Restrain the circulation of blood to an extremity for a period of time



REF BB - 48

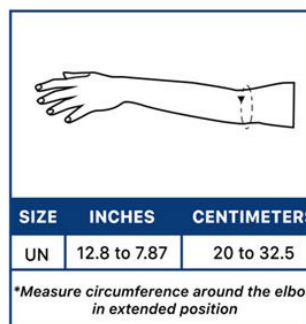


## Arm Immobilizer

*An Arm Immobilizer is a useful medical device that can be used to support the healing of various arm injuries or surgeries. It can help to reduce pain and swelling, prevent further injury, and restrict the movement of the arm.*

### Indications:

- Fractures, dislocations, and soft tissue injuries to muscle, ligaments, or tendons
- Post-operative recovery of arm
- Restrict the movement of the arm
- Immobilize the elbow joint



REF BB - 49





Allowing you to exercise healthily and safely. That is the driving force behind **Blubud** Sports. When it comes to injuries, for prevention or in cases of straining a joint, **Blubud** Sports braces allow the user to regain control in sporting activities.



# WRIST FINGERS & THUMB SUPPORT



## Wrist Brace with Double Lock

Designed with adjustable straps, moisture-wicking fabric and durable nylon reinforcement.

### Indications:

- Sprains and strains.
- Mild Osteoarthritis.
- Swelling & Inflammation.
- Prophylaxis for exercise and sports.



SIZE	INCHES	CENTIMETERS
S	4.9 to 6.1	12.5 to 15.5
M	6.1 to 7.3	15.5 to 18.5
L	7.3 to 8.5	18.5 to 21.5

*\*Measure circumference evenly around wrist joint.*



REF BB-19



## Wrist Brace with Thumb

Designed with adjustable wrap-around straps, moisture-wicking fabric and durable nylon reinforcement.

### Indications:

- Sprains and strains.
- Mild Osteoarthritis.
- Swelling & inflammation.
- Tendonitis.



SIZE	INCHES	CENTIMETERS
UN	5 to 9.5	12.5 to 23.8

*\*Measure circumference evenly around wrist joint.*



REF BB-20



## Wrist Brace (Neoprene)

Created out of triple-layered neoprene. The top layer features continuous loops with rugged nylon fabric in the inner layer.

### Indications:

- Tendonitis.
- Tenosynovitis.
- Arthritic care of wrist.
- Sprains and strains.
- Dislocation of the wrist joint.
- Postoperative and postcast care.
- Prophylaxis for exercise and sports.



SIZE	INCHES	CENTIMETERS
UN	5 to 9.5	12.5 to 23.8

*\*Measure circumference evenly around wrist joint.*



REF BB-48



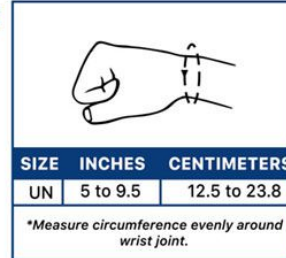


## Wrist Brace with Thumb Support (Neoprene)

Neoprene based design with adjustable wraparound straps, moisture-wicking fabric and durable nylon reinforcement.

### Indications:

- Ligamentous laxity of the thumb.
- Median nerve injury.
- Skier's thumb.
- Carpometacarpal joint injury.
- Post operative and post-cast care.
- Prophylaxis for exercise and sports.

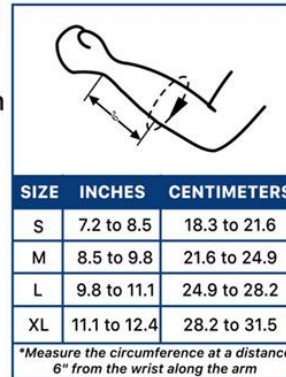


## Wrist and Forearm Splint (Right/Left)

Our Wrist & Forearm Splint is made of lasting nylon sleeve supported from within with pliable aluminum, restricts wrist movement, but allows the full extent of motion to the fingers and thumb.

### Indications:

- Post-cast management.
- Post-surgical protection and rehabilitation.
- Conservative management of Kienbock's disease.
- Rheumatic disease of the wrist.
- Arthritic hand positioning.

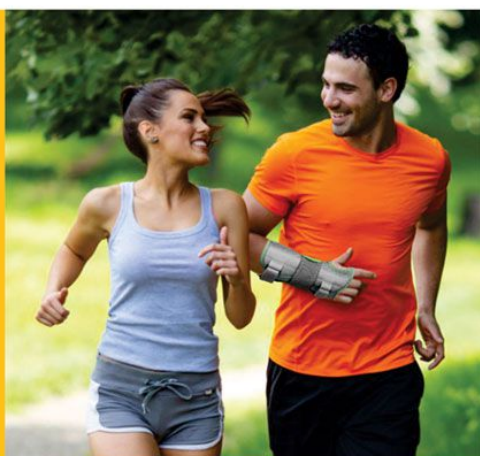
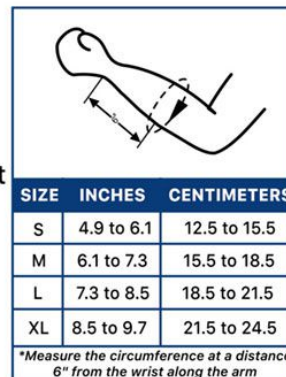


## Elastic Wrist Splint (Right/Left)

Our athletic-inspired elastic splint is a lightweight wrist support with double straps and anatomical design for rigid immobilization, while maintaining the wrist in a functional position.

### Indications:

- Carpal Tunnel Syndrome.
- Post-Surgery.
- Post-cast management.
- Wrist sprains and strains.
- Tendonitis.






## Finger Cot Splint

Made of aluminum exterior frame for protective and perfect immobilization and soft foam inner for comfort.

### Indications:

- Finger Injury.
- Post finger Fracture.
- Postoperative care.
- Sprains and bruises of fingers.



SIZE	INCHES	CENTIMETERS
S	< 2	< 5
M	2-3	5-7.5
L	3-4	7.5-10
*Length of Finger		



REF BB-52




## Finger Extension Splint

Made of aluminum exterior frame for protective and perfect immobilization and soft foam inner for comfort.

### Indications:

- Metacarpal Injury.
- Fracture.
- Post-surgery.
- Sprains and bruises of fingers.



SIZE	INCHES	CENTIMETERS
S	< 2	< 5
M	2-3	5-7.5
L	3-4	7.5-10
*Length of Finger		



REF BB - 53




## Frog Splint

Made of light-weight but rigid aluminum frame to rehabilitate and align the post ligamentary damage of the interphalangeal joint.

### Indications:

- Interphalangeal (IP) Joint Injury.
- Finger Injury.
- Finger Sprain.
- Postoperative care.



SIZE	INCHES	CENTIMETERS
S	< 2	< 5
M	2-3	5-7.5
L	3-4	7.5-10
*Length of Finger		



REF BB - 54




## Mallet Finger Splint

Ethafoam liner for cushioning and also suitable for post-operative care.

### Indications:

- Bruising of the dorsum of the DIPJ.
- Mallet finger deformity.
- May help manage the extensor tendon injury.
- Minor fractures of the distal phalanges.
- Distal phalange postfracture care.
- Distal interphalangeal (DIP) joint conditions.
- Swollen fingertip.
- Post-surgical care.



SIZE	INCHES	CENTIMETERS
UN	< 2-4	< 5-10
*Length of Finger		



REF BB - 55



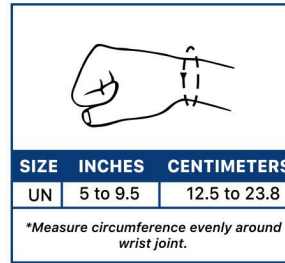


## DC Thumb Spica Splint

A flexible and comfortable splint made of malleable material for easy application and removal.

### Indications:

- Bursitis.
- Sprains of thumb.
- Avulsion fractures of the thumb.
- Soft tissue injuries.
- Thumb pain symptoms.
- CMC & MCP joint conditions.



## DC Hand Exercise Gel Ball

Keeps fingers and hand muscles strong and give relief from wrist pain and finger pain. Reduces stiffness and improves strength in fingers and thumb. Easy to grip surface.

### Indications:

- Post Fracture.
- Stress.
- Weak forearm and grip strength.

SIZE	INCHES	CENTIMETERS
UN	2.50	6.50
Soft	Medium	Hard



## Weight Cuff

Our weight cuff is fit for graded exercise therapy (GET) and also cosmetic arm muscle shaping.

### Indications:

- Graded exercise therapy (GET).
- Poor muscle tone.
- Post-cast care.

SIZE	1/2 Kg	1 Kg	2 Kg
<i>*Variations of Weight Cuff fit all Wrists and ankles</i>			





# PELVIC & HIP SUPPORT

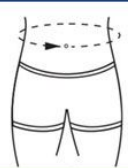


## Pelvic Binder

Our Pelvic Binder is made with ruggedness for extended and repetitive uses.

### Indications:

- Lumbar spondylitis.
- Lower back pain.
- Postural fatigue.
- Postural deformities.
- Vertebral fractures.
- Mechanical stress due to poor posture.



SIZE	INCHES	CENTIMETERS
S	32 to 38	80 to 95
M	38 to 44	95 to 110
L	44 to 50	110 to 125
XL	50 to 56	125 to 140

*\*Measure circumference 3" below navel*



REF BB-57

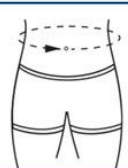


## Pelvic Traction Kit + Weight Bag

A versatile traction kit that can be used in all kinds of tractions and on all kinds of beds.

### Indications:

- Lumbar spondylitis.
- Lower back pain.
- Postural fatigue.
- Postural deformities.
- Vertebral fractures.
- Mechanical stress due to poor posture.



SIZE	INCHES	CENTIMETERS
S	32 to 38	80 to 95
M	38 to 44	95 to 110
L	44 to 50	110 to 125
XL	50 to 56	125 to 140

*\*Measure circumference 3" below navel*



REF BB-58



## Traction Weight Bag

The Weight Bag applies uniform and controlled traction to the lumbar, sacral, and thoracic areas of the vertebral column.

### Indications:

- Convenient home use
- Controlled continuous traction
- Easy removal and application

Weight Capacity	
Liquid	10 Ltr.
Solid	12 Kg.



REF BB-59



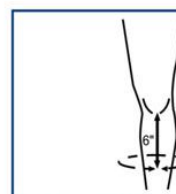


## Leg Traction Brace

Four sets of nylon based buckle closure with an additional locking mechanism to ensure a secure fit.

### Indications:

- Hip/Sacral pain.
- Shaft fractures of the femur.
- Traction to relieve pain in the lower back
- When pelvic traction is not possible or not desired.



SIZE	INCHES	CENTIMETERS
S	8.5 to 11.0	21.5 to 27.90
M	11.0 to 13.50	27.90 to 34.20
L	13.50 to 16.0	34.20 to 40.60
XL	16.0 to 18.50	40.60 to 46.90
XXL	18.50 to 21.0	46.90 to 52.50

*\*Measure circumference around calf approx. 6 inches below knee*



REF BB-60



# THIGH, KNEE, ANKLE & CALF SUPPORT



## Skin Traction Set (Puf Liner)

Our Skin Traction kit is made with foam liner designed to ensure there is no friction damage to the skin and no slippage during traction.

### Indications:

- Need for indirect traction to extremities.
- Pains & Spasms.

SIZE	INCHES	CENTIMETERS
Child	<12	<30
Adult	>12	>30



REF DC-61

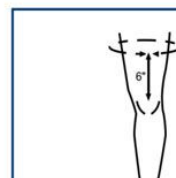


## Thigh Support

The weaving method for our Thigh Support provides seamless stretching stockings with a tapered top to bottom design to hold in a natural shape.

### Indications:

- Hamstring strain.
- Muscle spasms or cramping.
- Arthritis.
- Stiffness or Trauma.
- Pain & Inflammation.
- Sports Injury.



SIZE	INCHES	CENTIMETERS
S	14.8 to 17.2	37 to 43
M	17.2 to 19.6	43 to 49
L	19.6 to 22	49 to 55
XL	22 to 24.4	55 to 61
XXL	24.4 to 26.8	61 to 67

*\*Measure circumference around mid thigh - approx. 6 inches above knee*



REF BB-62

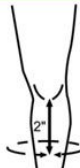


## Calf Support

Hypoallergenic elastic fabric from unique fibres blended with cotton prevents skin irritations and perfect compression

### Indications:

- Weak or injured calves, fatigued legs, and stressed muscles.
- Aching calf muscles.
- Cramps and painful calf conditions.
- Muscle strain.



SIZE	INCHES	CENTIMETERS
S	9.8 to 11.3	25 to 29
M	11.3 to 12.8	29 to 33
L	12.8 to 14.3	33 to 36
XL	14.3 to 15.8	36 to 40

*\*Measure circumference approx. 2 inches below knee*



REF BB - 78

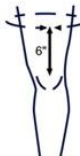


## Knee Cap

*Anatomically tapered form and spandex-based fabric ensure effective compression with stretchability and comfort.*

### Indications:

- Arthritic pain.
- Osteoarthritis of the knee.
- Ligaments or tendon injury.
- Quad cramps.
- Knee sprain.
- Weak knees.



SIZE	INCHES	CENTIMETERS
S	14.8 to 17.2	37 to 43
M	17.2 to 19.6	43 to 49
L	19.6 to 22	49 to 55
XL	22 to 24.4	55 to 61
XXL	24.4 to 26.8	61 to 67

*\*Measure circumference around mid thigh - approx. 6 inches above knee*



REF BB - 04

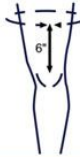


## Knee Cap Open Patella

Spandex-based fabric ensure effective compression with stretchability and comfort.

### Indications:

- Arthritic pain.
- Osteoarthritis of the knee.
- Ligaments or tendon injury.
- Quad cramps.
- Knee sprain.
- Weak Knees.



SIZE	INCHES	CENTIMETERS
S	14.8 to 17.2	37 to 43
M	17.2 to 19.6	43 to 49
L	19.6 to 22	49 to 55
XL	22 to 24.4	55 to 61
XXL	24.4 to 26.8	61 to 67

*\*Measure circumference around mid thigh - approx. 6 inches above knee*



REF BB - 64

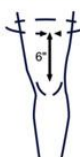


## Knee Cap Rigid Hinge

*An anatomically tapered form and spandex-based fabric ensure effective compression with stretchability and comfort.*

### Indications:

- Arthritic pain.
- Osteoarthritis of the knee.
- Ligaments of tendon injury.
- Quad cramps.
- Knee Sprain.
- Weak Knees.



SIZE	INCHES	CENTIMETERS
S	14.8 to 17.2	37 to 43
M	17.2 to 19.6	43 to 49
L	19.6 to 22	49 to 55
XL	22 to 24.4	55 to 61
XXL	24.4 to 26.8	61 to 67

*\*Measure circumference around mid thigh - approx. 6 inches above knee*



REF BB - 65



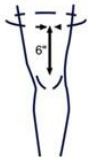


## Knee Wrap (Neoprene)

Made with triple-layer neoprene fabric. The triple hook loop closing system ensures easy wearing, removal and proper fit.

### Indications:

- Arthritic pain.
- Osteoarthritis of the knee.
- Ligaments of tendon injury.
- Quad cramps.
- Knee sprain.
- Weak knees.



SIZE	INCHES	CENTIMETERS
UN	14.8 to 22	37 to 55
Special	22 to 29.2	55 to 73

*\*Measure circumference around mid thigh approx 6" above knee*



REF BB - 66

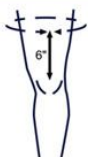


## Knee Wrap Hinged (Neoprene)

*Simple and quick put on with an easy wrap-around application made from tapered, four-way stretchable neoprene material.*

### Indications:

- Arthritic pain.
- Osteoarthritis of the knee.
- Ligaments or tendon injury.
- Quad cramps.
- Knee sprain.
- Weak knees.



SIZE	INCHES	CENTIMETERS
S	14.8 to 17.2	37 to 43
M	17.2 to 19.6	43 to 49
L	19.6 to 22	49 to 55
XL	22 to 24.4	55 to 61
XXL	24.4 to 26.8	61 to 67

*\*Measure circumference around mid thigh - approx. 6 inches above knee*



REF BB - 67

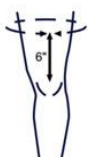


## Elastic Knee Support

Made from elastic, comfortable and durable material with adjustable strap for proper compression and customized fit.

### Indications:

- Arthritic pain.
- Osteoarthritis of the knee.
- Ligaments or tendon injury.
- Quad cramps.
- Knee sprain.
- Weak Knees.



SIZE	INCHES	CENTIMETERS
S	14.8 to 17.2	37 to 43
M	17.2 to 19.6	43 to 49
L	19.6 to 22	49 to 55
XL	22 to 24.4	55 to 61
XXL	24.4 to 26.8	61 to 67

*\*Measure circumference around mid thigh - approx. 6 inches above knee*



REF BB - 68




## Patellar Support

*Provides enhanced kinesthesia for promoting blood circulation and healing with customized compression and padding.*

### Indications:

- Patellofemoral pain syndrome
- Patellar tendonitis and arthritis.
- Osgood-Schlatter disease.
- Patellar dislocation and subluxation.
- Mild instabilities of the knee joint.



SIZE	INCHES	CENTIMETERS
UN	12 to 20	30 to 50

*\*Measure circumference around the knee*



REF BB - 69



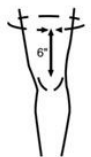


## DC Compression Stocking Mid Thigh Classic

Anatomically tapered form and spandex-based fabric ensure effective compression with stretchability and comfort.

### Indications:

- Varicose veins.
- Spider veins.
- Fatigue.
- Inflammation of the veins.
- Aching or swollen legs.



SIZE	INCHES	CENTIMETERS
S	14.8 to 17.2	37 to 43
M	17.2 to 19.6	43 to 49
L	19.6 to 22	49 to 55
XL	22 to 24.4	55 to 61
XXL	24.4 to 26.8	61 to 67

*\*Measure circumference around mid thigh - approx. 6 inches above knee*



REF BB-24

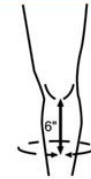


## DC Compression Stocking Below Knee Classic

Anatomically tapered form and spandex-based fabric ensure effective compression with stretchability and comfort.

### Indications:

- Varicose veins.
- Spider veins.
- Fatigue.
- Inflammation of the veins.
- Aching or swollen legs.



SIZE	INCHES	CENTIMETERS
S	8.5 to 11.0	21.5 to 27.90
M	11.0 to 13.50	27.90 to 34.20
L	13.50 to 16.0	34.20 to 40.60
XL	16.0 to 18.50	40.60 to 46.90
XXL	18.50 to 21.0	46.90 to 52.50

*\*Measure circumference around calf approx. 6 inches below knee*



REF BB-25


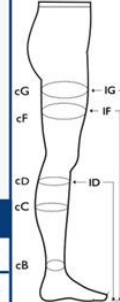


## Medical Compression Stocking Mid Thigh - Classic

Medical compression stockings are specially designed to apply pressure to your legs, helping to maintain blood flow and reduce discomfort and swelling.

### Indications:

- Maintain blood flow
- Reduce discomfort & Swelling
- Improving lymphatic drainage
- Managing orthostatic hypotension

Model	S	M	L	XL
cB	20 to 22	23 to 25	26 to 29	30 to 32
cC	30 to 39	33 to 41	36 to 45	39 to 48
cD	29 to 38	32 to 40	35 to 44	38 to 47
cC	49 to 63	54 to 66	58 to 71	60 to 71

*\*Measure circumference a mid thigh approx 6" above knee*

REF BB-70


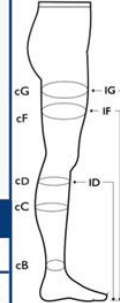


## Medical Compression Stocking Below Knee - Classic

Medical compression stockings are specially designed to apply pressure to your legs, helping to maintain blood flow and reduce discomfort and swelling.

### Indications:

- Maintain blood flow
- Reduce discomfort & Swelling
- Improving lymphatic drainage
- Managing orthostatic hypotension

Model	S	M	L	XL
cB	20 to 22	23 to 25	26 to 29	30 to 32
cC	30 to 39	33 to 41	36 to 45	39 to 48
cD	29 to 38	32 to 40	35 to 44	38 to 47
cC	49 to 63	54 to 66	58 to 71	60 to 71

*\*Measure circumference a mid thigh approx 6" below knee*

REF BB-71



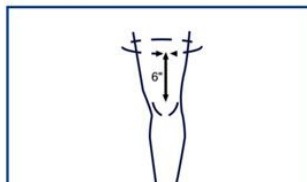


### Knee Immobilizer (14")

Hook & loop straps with loop closures and extra strap at the patellar region for proper fitting along with anatomically shaped posterior and lateral splints provide precise immobilization of the knee.

#### Indications:

- Ligament injuries.
- Tibial plateau fracture.
- Osteochondral injury.
- Patellar tendon injury.
- Acute sprains/strains of the knee.
- Post-cast care.
- Post/Preoperative care.



SIZE	INCHES	CENTIMETERS
S	14.8 to 17.2	37 to 43
M	17.2 to 19.6	43 to 49
L	19.6 to 22	49 to 55
XL	22 to 24.4	55 to 61
XXL	24.4 to 26.8	61 to 67

*\*Measure circumference around mid thigh - approx. 6 inches above knee*



**REF BB - 74**

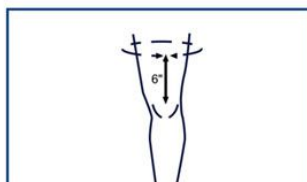


### Knee Immobilizer (19")

Hook & loop straps with loop closures and extra strap at the patellar region for proper fitting along with anatomically shaped posterior and lateral splints provide precise immobilization of the knee.

#### Indications:

- Ligament injuries.
- Tibial plateau fracture.
- Osteochondral injury.
- Patellar tendon injury.
- Acute sprains/strains of the knee.
- Post-cast care.
- Post/Preoperative care.



SIZE	INCHES	CENTIMETERS
S	14.8 to 17.2	37 to 43
M	17.2 to 19.6	43 to 49
L	19.6 to 22	49 to 55
XL	22 to 24.4	55 to 61
XXL	24.4 to 26.8	61 to 67

*\*Measure circumference around mid thigh - approx. 6 inches above knee*



**REF BB - 75**

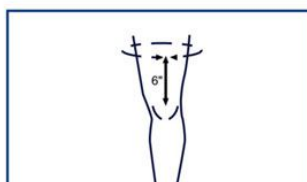


### Knee Immobilizer (22")

Hook & loop straps with loop closures and extra strap at the patellar region for proper fitting along with anatomically shaped posterior and lateral splints provide precise immobilization of the knee.

#### Indications:

- Ligament injuries.
- Tibial plateau fracture.
- Osteochondral injury.
- Patellar tendon injury.
- Acute sprains/strains of the knee.
- Post-cast care.
- Post/Preoperative care.



SIZE	INCHES	CENTIMETERS
S	14.8 to 17.2	37 to 43
M	17.2 to 19.6	43 to 49
L	19.6 to 22	49 to 55
XL	22 to 24.4	55 to 61
XXL	24.4 to 26.8	61 to 67

*\*Measure circumference around mid thigh - approx. 6 inches above knee*



**REF BB - 76**

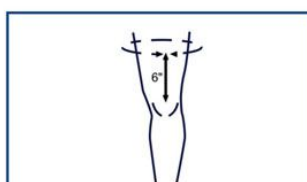


### R.O.M Knee Brace (22")

Our R.O.M Knee Brace provides locking at any angle or motion between any two angles with intervals of 15 degrees.

#### Indications:

- Arthritis / Osteoarthritis.
- Hamstring Injury.
- Knee ligament instability.
- Knee sprain.
- Lateral Collateral Swelling & Inflammation.
- Total knee replacement.



SIZE	INCHES	CENTIMETERS
UN	14.8 to 22	37 to 55

*\*Measure circumference around mid thigh approx 6" above knee*



**REF BB - 77**





## Exercise Band (Actiband)

It can be used for a variety of applications. Used particularly lower body exercise to increase strength, body balance and strengthen muscles.

### Indications:

- Improve strength & flexibility in glutes, knee and hips.
- Convenient and Portable.
- Powder-free surface for better gripping.

Resistance Level	Colour code	Resistance in Lbs*	Resistance in Kgs*
Light	Yellow	09.98	4.5
Medium	Red	11.86	5.4
Strong	Green	13.73	6.2
Extra Strong	Blue	15.60	7.0
Super Strong	Black	16.85	7.7



## Cotton Crepe Bandage B.P. (Acticrepe)

Cotton Crepe Bandages provide optimum support to the injured area and helps in relieving pain.

Size cm
6 cm X 4 mtr
8 cm X 4 mtr
10 cm X 4 mtr
15 cm X 4 mtr

REF BB - 88



## Elastic bandage for Compression

Elastic Bandages provide optimum support to the injured area and helps in relieving pain.

Size cm
6 cm X 4 mtr
8 cm X 4 mtr
10 cm X 4 mtr
15 cm X 4 mtr

REF BB - 89



## Elastic Fixation Bandage

Is a non-adhesive, elastic bandage for fixation and offers a precision fit, even in areas where there is constant movement such as the elbow or knee. Superior performance and stretchability in controlling bleeding or edema.

Size cm
6 cm X 4 mtr
8 cm X 4 mtr
10 cm X 4 mtr
15 cm X 4 mtr

REF BB - 31







# HOT & COLD PACKS



## Eye Mask (Cool Gel)

Blubud Eye Mask (Cool Gel) is innovative cooling solution to relieve pain and reduce soreness around the eyes.

### Indications:

- Reduce Puffiness
- Reducing Eye Strain
- Reducing Eye Dryness

SIZE
Universal



REF BB-83



## Cool Eyes (Gel)

Blubud Specially designed cool eyes offer relief to strained eyes. Velcro closure for customised level of fit.

### Indications:

- Dark Circle
- Reducing Eye Dryness
- Pain Relief

SIZE
Universal



REF BB-84



## Hot & Cold Multipurpose Reusable Gel Pack

Blubud Hot and cold gel pack provides therapeutic relief and facilitates hot and cold therapy to treat swelling, pain, sore muscles and body stiffness.

### Indications:

- Lumbago (Low Back Pain).
- Joint Pain & Swelling.
- Muscle Spasms.

SIZE
Medium   Large

Product Dimensions	Weight/Unit
260 X 125 mm	320 gms
300 X 180 mm	700 gms



REF BB-86 , BB - 87



# Disposable



## Soft Wide Earloop Face Mask

3-ply mask is a disposable mask that has 3 layers of non-woven fabric to help you breathe clean air.

### Indications:

- Adjustable nose bridge
- Seamless crimping & breathability
- Soft non-woven earloop

#### SIZE

Universal

**BB-138**



## Tubular Elastic Earloop Face Mask

3-ply mask is a disposable mask that has 3 layers of non-woven fabric to help you breathe clean air.

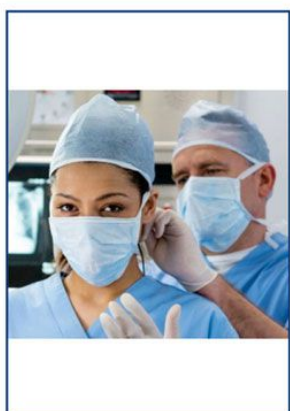
### Indications:

- Adjustable nose bridge
- Seamless crimping & breathability
- Soft non-woven earloop

#### SIZE

Universal

**REF BB-138**



## Mask Tie loop bulk

3-ply mask is a disposable mask that has 3 layers of non-woven fabric to help you breathe clean air.

Seamless crimping & Breath ability  
Soft Tie loop.

#### SIZE

Universal

**REF BB-138**





# Absorbent Cotton Wool I.P



Available Size	
BB 459 ABSORBENT COTTON WOOL I.P.	25 grams
BB 466 ABSORBENT COTTON WOOL I.P.	50 grams
BB 473 ABSORBENT COTTON WOOL I.P.	100 grams
BB 480 ABSORBENT COTTON WOOL I.P.	200 grams
BB 497 ABSORBENT COTTON WOOL I.P.	400 grams



We are a prominent manufacturer, exporter and supplier of high quality Absorbent Cotton Wool. We offer a wide gamut of Absorbent cotton wool. This superior quality cotton is used for dressing purposes in hospitals, health care centres, clinics, etc. This cotton is processed under the most favourable conditions and modern machinery as per the set quality norms. Owing to its features like high strength, moisture & heat resistance, smooth texture, eco-friendliness and excellent absorbing ability which leads to better absorbency of body fluids and hence is more suitable as dressing material for wounds and incisions.

## Specification

- Naturally White
- Consistent Layer.
- High strength
- 100% pure cotton
- Absorbency to comply with any Standard
- Excellent in quality
- No chemical or starch used
- Very Soft., No artificial Softeners used
- As per IP standard
- Highly absorbent with absorbency timeless than 8 second
- Moisture & heat resistance
- Excellent in decreasing and bleaching ability
- White & Clean, No impurities
- Commercial & Industrial use

## This image shows a full page of a handwriting practice worksheet. It consists of multiple rows of horizontal dashed lines spaced evenly apart, providing a guide for letter height and placement. The background is plain white, and there are no other markings or text on the page.





**PINKBUD ORTHOTICS PVT.LTD.**



## CONTACT

Customer Care No. : +91 84280 80100

Email : cc@blubudstore.com

Email : csr@blubudstore.com

Web : www.blubudstore.com

### Address:



**PINKBUD ORTHOTICS PVT. LTD.**

#SP-106, 12th Street, 1st Main Road, Ambattur  
Industrial Estate, Chennai - 600058.

Follow us



Blubud



Blubudofficial2025

**ISO**  
9001

**ISO**  
45001

**ISO**  
13485



**W.H.O.**  
G.M.P.

**US FDA**  
Approved

