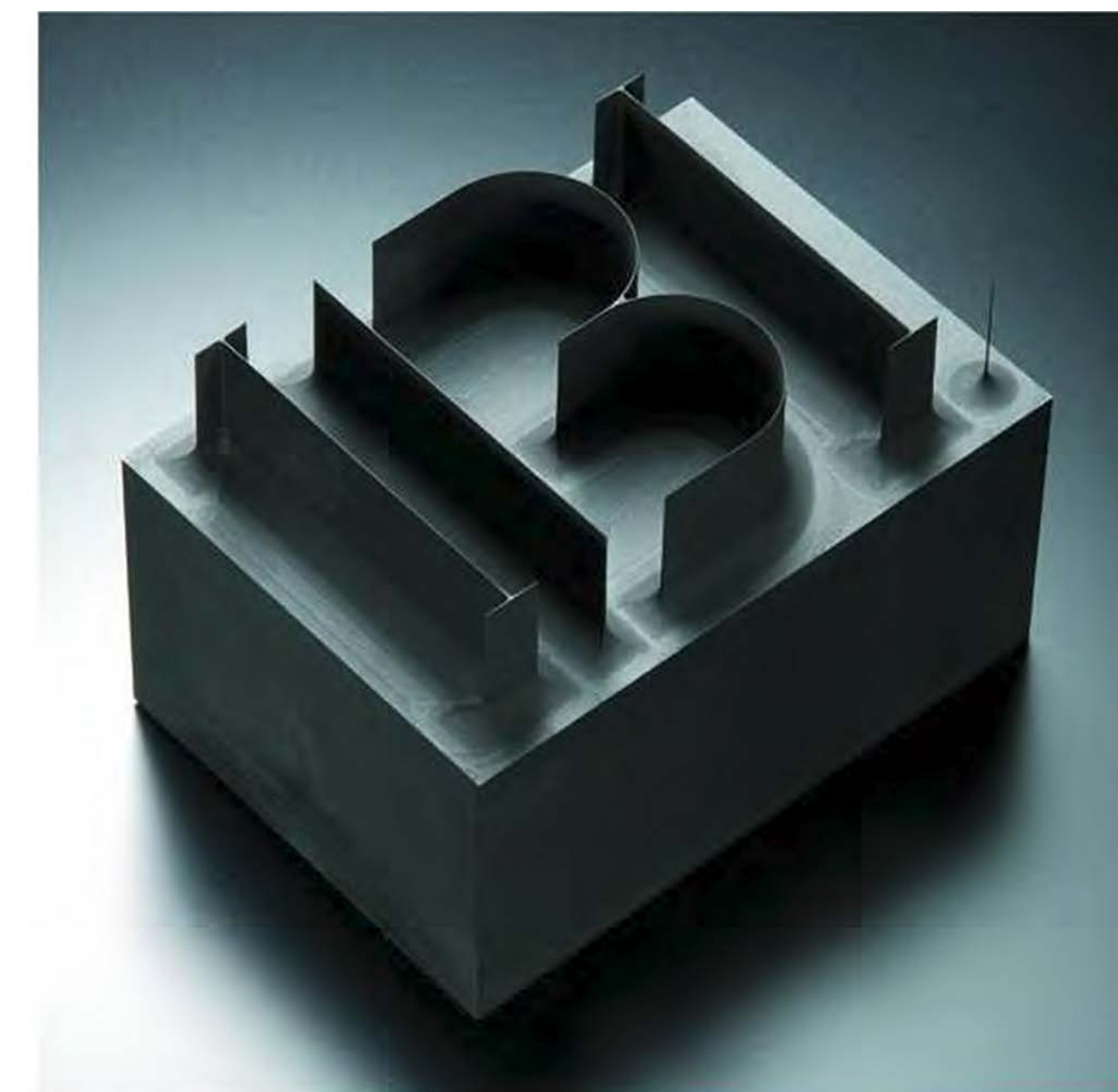
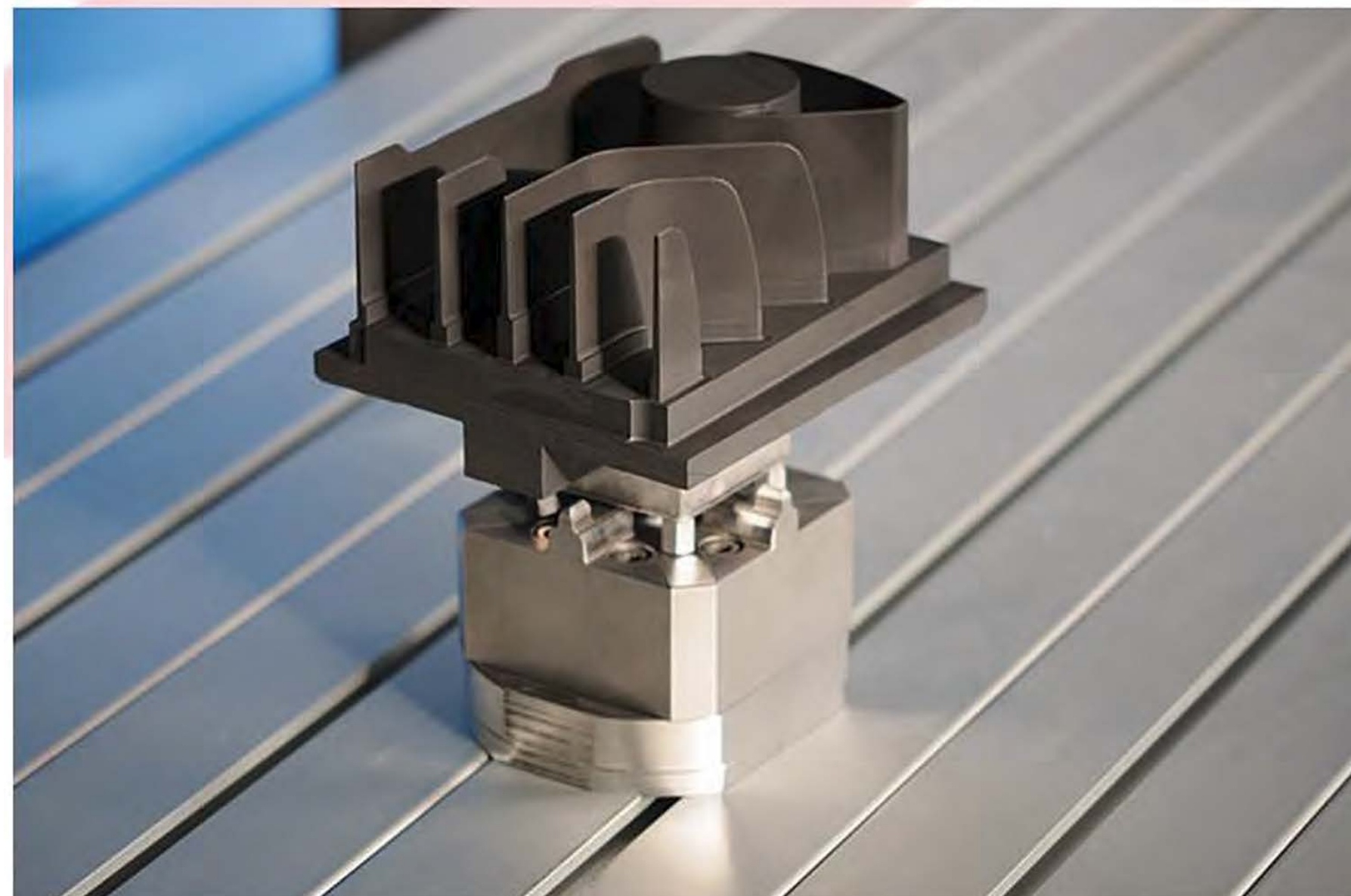


NICKUNJ Isostatically Pressed High Density Graphite for EDM / Continuous Casting, Sintering & Furnace Application

## Machined EDM Graphite Electrodes



## Graphite Heating Element for Vacuum Furnace



## Continuous Casting Dies of Graphite



## Graphite Nozzle

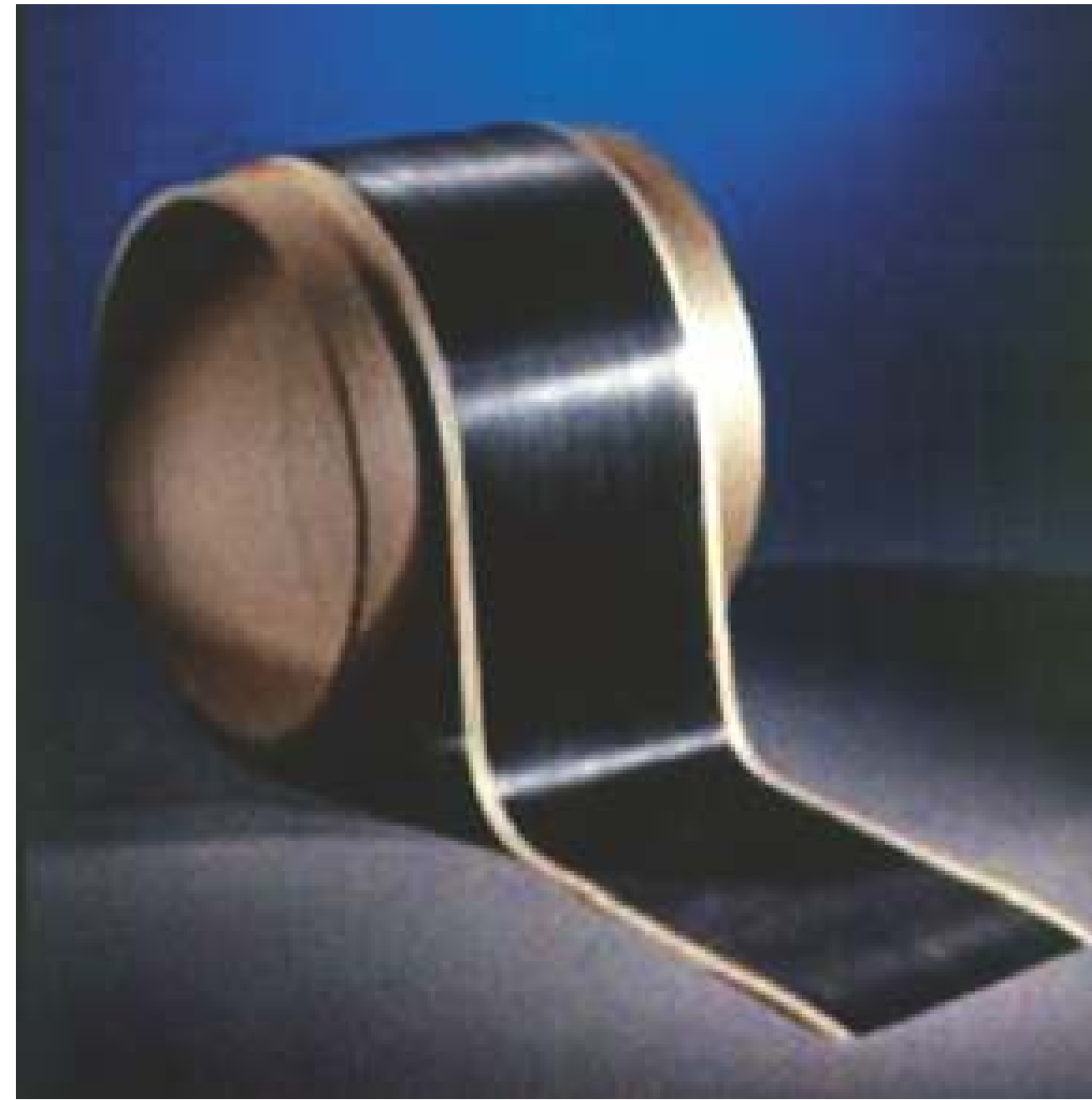




# CARBON



**Carbon Sleeves**



**Carbon Fiber,  
Tapes**



**Carbon Fiber**

1K,3K,6K  
12K,24,48K



**Chopped  
Carbon Fiber**

0.5mm, 1mm,  
2mm,6mm



**Carbon  
Fiber Fabric**

100GSM, 200GSM, 380GSM  
plain, twill, uni/bi directional  
8HS, 5HS, Multi-axial

Carbon fibers and fabrics for aircraft and spacecraft parts, racing car bodies, golf club shafts, bicycle frames, fishing rods, automobile springs, sailboat masts, and many other components where light weight and high strength are needed.



# HIGH SILICA FABRIC



**Sio<sub>2</sub> content >99% • Na<sub>2</sub>O content 0.7% • Thickness 0.590mm Width 1270mm • Mass Area Ratio gm/m<sup>2</sup> 520-640**

# HIGH TEMPERATURE INSULATION MATERIALS FOR VACUUM FURNACES



**Plain Rigid Insulation Board**



**Carbon Cordage**



**Graphite - Carbon Felt.**