

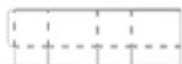
CORROUGATED BOXES

Corrugated boxes are also known as packing cartons or cardboard boxes. Corrugated boxes are made of corrugated paper board with 3 or more layers of paper. Various types of papers, glues and the flutes together define the strength of the corrugated-box need to be made. Corrugated boxes are durable, lightweight and sustainable form of packaging. They have great structural strength and significant cushioning capability.

Radhika Equipments is a one-stop solution for all your packaging needs. At Radhika, you will find the best corrugated boxes across India and that too, on lowest prices. We have a lot of varieties for boxes in design/ style and fabrication varieties.

Styles of Corrugated Boxes

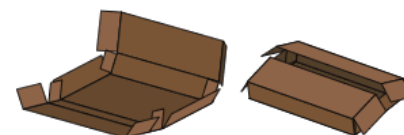
Half Slotted Container (HSC)



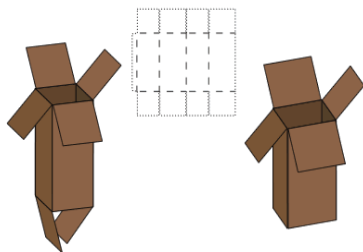
The Half-Slotted Carton (HSC) is much like the RSC but with flaps only on one end, leaving an open top on the other end.

The Five Panel Folder - Center Fold (CF5PF) is much like the five panel folder. With the CF5PF, you set your product on the box and wrap the box around it. The difference is, with the CF5PF the flaps come together in the center of the top of the box. This type of box is best for shipping flat items like framed items and signs.

Centre Fold 5 Panel Folder (CF5PF)



Full Flap Slotted Container (FFSC)

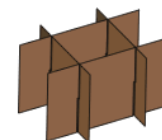
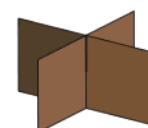


The Full Flap Slotted Carton's (FFSC) has outer flaps that fully overlap. This offers extra strength and support and is particularly suitable to cartons that have a narrow width.

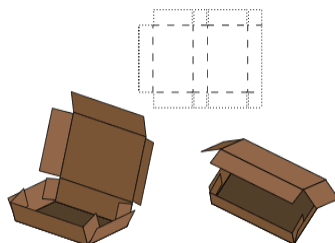
Partitions



The Partition Element is available for making partition dividers for separating or supporting your products



5 Panel Folder (5PF)



The Five Panel Folder (5PF), when assembled, has multi-layered corrugated ends that make it an excellent container for the shipment of long, flat items. It is supplied flat for you to wrap around your product and sealed at the ends by your means.

Die Cut (Tuck-in) boxes are also called Roll End Flap Mailers and are suitable for any packaging. The front flap locks into the main body and the tuck in flaps lock in the box adding overall strength to the design. These lock flaps helps in re-locking the box once it is opened. It is, hence, very easy to re-use the box and they last really long. Along with packing and shipping, these boxes are widely used for storing products as they can be opened and closed conveniently. They serve for a longer period of time and can be reused and kept for years if kept in a sustainable environment.



Our **Corrugated Pallets**, deals in heavy duty pallets widely used in each and every industry for transportation.

Constructions of Corrugated Boxes



Single Wall (3 Ply)

Single wall boxes have one fluted medium sandwich between two sheets of paper. Single wall boxes are suitable for majority of lightweight items being packed or stored or courier. Single wall boxes are a cost effective options as they offer protection and they are lightweight.

Double Wall (5Ply) Corrugated Boxes

Double wall boxes have two fluted mediums sandwiched between three sheets of kraft paper. These boxes can be stacked for longer periods of time than single wall while resisting crushing. Double wall boxes are ideal for shipping products that require a higher level of protection and where the weight of the contents is increased. **Radhika Equipments's** wide range of 5-Ply Corrugated Boxes used for Packing of Machinery Parts, and other items. This quality is widely used for its durability, Strength and is cost effective.



Triple Wall Corrugated – 7 ply Boxes

Three corrugated mediums and four linerboard facings. This 7-ply construction is used where large container sizes are involved, such as pallet packs. These are very good substitute of wooden boxes.

Features

- Made up of two layers of C Flute and one Layer of B Flute
- Very strong and Crush Resistant
- Excellent for Storage and Transit

HDPE Cartons

Radhika Equipments's HDPE Cartons are with-in house facility of Single or Multi Color Screen Printing, HDPE Material is very useful, where waterproofing is required or Long distance Transportation is involved.



INDUSTRIAL BOX / Bulk Packing Boxes

Radhika Equipments's heavy duty boxes are made of double wall / triple wall even quadruple walls (5/ 7 or 9-ply boxes) are made of very high quality kraft paper. These boxes have a separate lid which fits on top of the box. These are having more strength than the regular boxes and are designed for carrying heavy products for shipping where strength and durability is required. They are very large sized boxes and can be used to ship very heavy items over-seas. Generally used for export, these boxes have capability to carry irregular shaped products safely. These boxes could be your best choice when you are

willing to ship fragile items or are worried about the abuses during the transit. These boxes provide maximum protection to the product contained inside it. Ideal for shipping your sensitive items. Can also be used while re-location. Heavy Duty cartons can withstand heavy loads and hence are also ideal for packaging of shipping heavy products like automobile and industrial machinery parts. Solar and aviation related products, food, cosmetic, medicine and electronic products and other fragile items. These are also popular for freight consolidation and used for shipping purpose.



Eco-Friendly Paper/Recycled Paper

Radhika Equipments is offering cost-effective and environmentally friendly recycled paper boxes. More than 50% of our products are made from recycled materials. These recycled materials primarily consist of post-consumer recycled paper, which is material discarded after consumer use that has been separated from solid waste to be recycled into new paper. Recycled paperboard is one of the best options for an environmentally friendly minded business or organization to use. In addition, all of our paperboard is 100% recyclable.

“We have a team of in-house Engineers, who can provide our customers with product design in 3D/ CAD and manufacturing. With wide range of capabilities, in various materials and designs, our customers appreciated our one stop solutions to their parts needs.”



Radhika Equipments

CORPORATE OFFICE: D885, Chawla Colony, Ballabgarh (Faridabad), 121004, INDIA

WORKS: Plot n0. 13, Eicher Compound, Sector- 23, Faridabad 121005, INDIA

EMAIL: radhikaequipments@outlook.com; info@radhikaequipment.in

MOBILE: +91 8750509715; +91 8901134487

WHATSAPP: +91 875059715

www.radhikaequipmentsindia.com