



Riddhi Enterprise

AN ISO 9001:2008 CERTIFIED COMPANY CRISIL RATED



www.riddhienterprise.in

Riddhi Enterprise is a trusted name in the Indian Construction Supplies Sector, when it comes to superior quality Construction Supplies. As part of our Construction Materials product range, we offer Non Metallic Floor Hardener, Metallic Floor Hardener, Water Repellent, Construction Waterproofings, Waterproofing Chemicals, Waterproofing Compounds, Elastomeric Coatings and various other products.

Riddhi Enterprise' a leading Construction Supplies center, was incepted in the year 1997, under the able guidance and leadership of Mr. Nilesh Shah. Since inception, the company has achieved remarkable growth in the field of Construction supplies and is today listed among the top Construction Suppliers Manufacturers and Suppliers from Mumbai, Maharashtra. The pillar on which our growth chart is built are listed below

QUALITY POLICY

Being a quality conscious organization, we lay lot of emphasis upon the quality of products we offer to our clients. To ensure flawless quality of Construction Supplies, we have designed strict quality policy, with strict testing and analysis involved at each stage of the process. Our quality policy has following steps :

- Inspection of the produced lot closely to exclude the products not meeting the specific requirements
- Final visual inspection of our range before dispatching it to the clients

TEAM

We have also hired team of expert professionals who undertake all the business operations of our company efficiently. Our proficient team comprises the following :

- Procuring agents
- Quality inspectors
- Other technical personnel
- Administrative officers
- Customer care executives

We also take regular training and skill up-gradation sessions for our Team, to keep it updated about the latest developments in the field of construction supplies

WAREHOUSE

The growing demand of our products in markets across the country has inspired us to develop spacious warehousing facility. Our warehouse not only allows us to keep the supplies in safe and damage free manner but also the organized storage also helps in the speedy dispatch of the ordered consignment.

SOME OF THE FEATURES WHICH MAKE OUR WAREHOUSE SPECIAL ARE LISTED BELOW

- Divided into different labeled sections
- Excellent connectivity with various modes of transport
- Superior material handling equipment for quick mobility of products
- Congenial environment according to our range

Admixtures

Description : high-range water reducing and set retarding concrete admixture. It is a highly effective super plasticizer with controlled set retarding effect to produce flowing concrete in hot climates. Also, a substantial water reduction can be achieved to promote high ultimate strengths.

Uses : Concrete Admixtures is used as a super plasticiser in the production of free flowing concrete such as: Slabs and foundations. Walls, columns and piers. Slender components with densely packed reinforcements. Textured surface finishes. It is also used as a water-reducing agent leading to high early strength concrete such as: Pre-cast concrete elements. Pre-stressed concrete. Bridges and cantilever structures. Areas of concrete where form-work must be removed quickly or early loading applied.

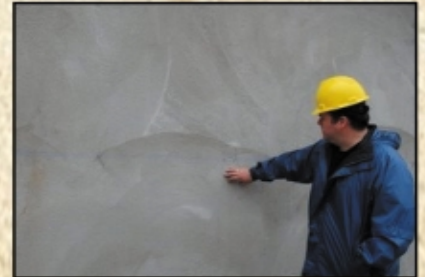


Integral Waterproofing

Description : Liquid integral water reducing cum waterproofing admixture for all types of concrete and mortar

Uses - recommended for use in structural and mass concrete, particularly for the following.

- Casting of roof slabs
- DPC
- Beams
- Columns
- Water tanks
- Culverts
- Tunnels
- Sewerage works
- Virtually wherever watertight concrete is required



SBR Polymer

SBR POLYMER is a synthetic rubber emulsion which when added to cement mortar/concrete/grout provides good adhesion and water resistance. It comes in the form of a milky liquid. It is fully soluble in water and is to be added directly to the gauging water of mortar/concrete/cementitious grout.

SBR is a high quality emulsion that substantially increases the qualities of cement mortar/concrete/ cementitious grout. The scope of application are as follows: Rendering and Coatings



Fiber Glass Mesh

We are instrumental in supplying our customers with Glass Fiber Mesh, which is used for reinforcement of concrete based products, gypsum products and bitumen. The product is extensively used and appreciated for providing one time solution. We are specialized for handling bulk orders owing to our spacious warehousing and diligent team of professionals. Our product line is in compliance with the industrial standards.

Fiber glass mesh available gsm.

Mesh is available in various types of Mesh size and colors suit to different applications in construction

Fiber glass mesh (45/60/80/110/145gsm)

Features: • High quality concrete fiber glass mesh • Good alkaline resistant • Good paste

Product Details: These glass fiber mesh take the moderate alkali or alkali less glass fiber inter texture as the basic material and the material is managed by smearing alkali resisting pastern on it. These glass fiber mesh are used as an ideal reinforcement material on inside and outside wall heat preservation and the strengthening of stone material, bitumen, concrete product and gypsum product. Glass fiber mesh is made of direct roving or yarn woven into lino weave with special coating compatible with construction chemicals. Mesh is available in various types of Mesh size and colors suit to different applications in construction

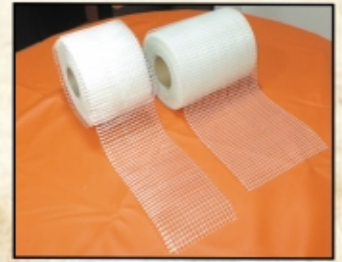


Fibre Glass Tape

Cross Weave Glass : fibre reinforced tape coated with synthetic rubber resin adhesive (Hotmelt).

Application:

- Reinforce lightweight construction boards
- Cold joints reinforcement
- Electrical joint reinforcement (Jari)
- Rcc Joint.



Fibers for reinforcement

Anti Crack HD Fibre : Anti-Crak® HD (High Dispersion) is an engineered AR-glass chopped strand designed for mixing in concrete and all hydraulic mortars.

Anti-Crak® HD fibers are typically used at low addition level to prevent cracking & improve the performance of concrete, flooring, renders or other special mortar mixes. They incorporate easily into mixes creating a tridimensional homogeneous network of reinforcement in the matrix. Anti-Crak® HD fibers can be added at the central mixing plant to the wet concrete mix; or directly into the ready-mix truck. Anti-Crak® HD fibers do not protrude through the surface and require no additional finishing procedures. The reinforcement is incorporated in the concrete mass and is invisible on the finished surface.



Polypropylene (PP) Fibre : We are counted as the renowned manufacturer, exporter and supplier of offering quality approved Polypropylene Fibre (Nupol). The provided fibre is manufactured under the supervision of our deft professionals with utmost precision and ultra modern technology in compliance with predefined industry standards. Our offered fibre is used in packaging, labeling, automotive, etc. This fibre is cut from continuously extruded polymer filaments called tows and each individual fibre is cut to a precise length of 3 mm-20 mm.



Steel Fibre : Steel Fibre (MSCF) is the leading low carbon, cold drawn steel fibre for concrete reinforcement. It is evenly distributed in concrete mixtures to provide "improved mechanical bonding capacity" exceeding most performance specifications for enhancing concrete's flexural and shear strength, fatigue endurance, impact resistance and ductility. It is a reliable, cost efficient concrete reinforcement that is designed to be easy to mix, place and finish.



Sealant

PU (Poly Polyurethane) Sealant : PU Sealant is an elastic, single component, gun-grade, moisture curing polyurethane sealant specifically developed to be used in building facade expansion joints where high elasticity is required. The product is suitable for sealing joints in pre-cast elements, external walling, curtain walling and cladding, panel walls, window and door perimeter sealing etc.



PU (Poly Urethane)Foam : PU Foam is a hand held, quick setting expanding foam with good heat and sound insulation. It adheres to most building materials like wood, concrete, brick, metal, aluminium.



Metallic & Non Metallic Floor Hardener

Floor Hardener We manufacture and supply a wide consignment of Metallic Floor Hardeners. Our offered range of these products is made in a way to have abrasion resistant which makes concrete and strong flooring. These hardeners make the flooring concrete thus reducing the repair & maintenance cost



Micro Concrete

Ready to use non-shrink, cementitious micro concrete Micro Concrete is factory designed pourable, non shrink, repair concrete with selected cement, aggregate and other chemicals. Recommended water and coarse aggregate to be added at site as per requirement.

Uses : Micro Concrete is mainly recommended for the repair of damaged concrete structures e.g. * Columns * Beams * Slab, etc * It is also recommended for grouting of large gaps.



High precision, non shrink, expanding pouring grout

Description : Cement based flowable, two stage expanding grout with selected aggregate.

Uses:

- To grout bearings, machine foundations, columns joints in precast construction etc.
- To grout anchors in concrete
- To grout cavities, gaps and voids in concrete



Block Fixing Adhesives, Ready Mix Plaster & Tile

Block Fixing Adhesive is a age –thin joint technology which is overlooking the traditional ways of bonding aac block and fly ash bricks block fixing adhesive is eco friendly and economical product .versatile thin jointing mortar for aac block/concrete block. specially designed with very fine particles size for thin joint & high adhesive strength for quick and firm laying of aac block/concrete block, save time & logistic expense as require very less quantity compare to traditional mortar and only water is to add for application speed up the build process.



Elastomeric Coating

Single Component UV Resistant Elastomeric Exterior Coating

Description : elastomeric high build coating based on a revolutionary acrylic polymer with quick-set capabilities to resist premature moisture attack. Elastomeric Paint provides durability, flexibility, and excellent weather resistance. Because of a unique UV cross-link curing mechanism, Elastomeric Paint becomes more durable with age. It is easy to apply and is environmentally safe and non-polluting. Elastomeric Paint has inherent waterproofing qualities as well.



Airless Spray Equipments

No more Hand Painting & Manual Putty work. Grab and use latest Paint & Putty Sprayers, for to better and excellent wall finish. More surface covered with lesser manpower and time. Almost Zero wastage. One machine can do the work of 15-20 workmen. Save paint and save cost. Machines are designed for spraying distemper, oil based and normal paint. Under the strict supervision of our experienced professionals, we are offering an innovative collection of Airless Paint **Sprayer Machine**. Our provided range is manufactured by using quality proven raw material and modern technology at our end. In order to ensure quality, this fork stacker is thoroughly tested on several parameters. In tune with international standard, we provide the entire range in several designs & sizes, as per the ever-evolving requirement of our clients.



Injection (PU) Grouting Machine

No more Hand Painting & Manual Putty work. Grab and use latest Paint & Putty Sprayers, for to better and excellent wall finish. More surface covered with lesser manpower and time. Almost Zero wastage. One machine can do the work of 15-20 workmen. Save paint and save cost. Machines are designed for spraying distemper, oil based and normal paint. Under the strict supervision of our experienced professionals, we are offering an innovative collection of Airless Paint **Sprayer Machine**. Our provided range is manufactured by using quality proven raw material and modern technology at our end. In order to ensure quality, this fork stacker is thoroughly tested on several parameters. In tune with international standard, we provide the entire range in several designs & sizes, as per the ever-evolving requirement of our clients.



Paint Mixer

This mixer is suitable for mixing all types of Paints & Putty etc. Comfortable handle grip makes the mixing very easy. The mixer consists of a high torque motor with a robust gear box, with electronically variable continuously variable speed. So that different speeds and power output can be selected for different viscosity materials, due to this speed control. There is no splashing of the liquids. The ON/OFF switch can lock into position at any selected speed for continuous automatic operation at the selected speed. This machine is also known as Putty Mixer & Electric Paint Mixer.



Badminton Court Wooden Flooring

We are supply of Badminton colour, Having experience of more than thirty five years in the allied field, we are engaged in manufacturing, exporting and supplying Badminton Court Wooden Flooring to the clients. Manufactured and designed with the use of excellent quality wood and innovative methods, the provided flooring offer fitness, safety and excellent sport ambiance to players. Also, tested on various parameters, the provided flooring is highly acknowledged by the clients all across the country. Besides, we offer this Badminton Court Wooden Flooring at most economic rates to the clients.



Services of Waterproofing



PU Grouting Services



Terrace Waterproofing



Heat Reflective coatings



Elastomeric Coatings



Garden Waterproofing





Mr. Nilesh Shah

218, Sagar, Prabhat Co-op Industrial Estate Dahisar Check Naka,
Dahisar East, Mumbai, Maharashtra-400068, India

Phone : +91-22-32937349, +91-22-40141473, +91-22-40141473

Fax : +91-22-28978581

Mobile : +91-9322261473, +91-8042756121

Email : nileshriddhi@yahoo.co.in

Web Site : www.riddhienterprise.in

Web Page : www.exportersindia.com/riddhienterprise/