

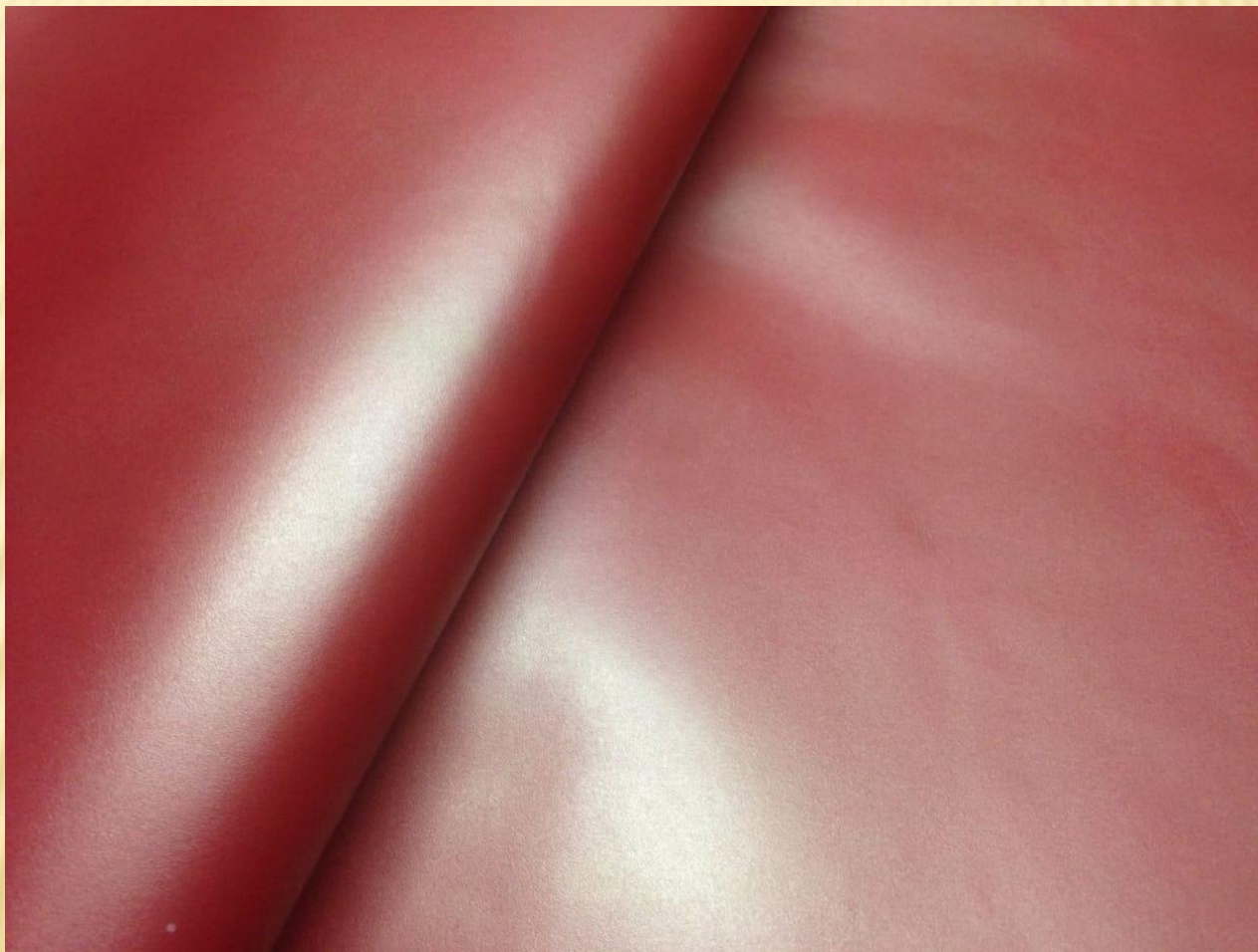
SSV ENTERPRISES

**WE DEALS IN BEST QUALITY FINISHED LEATHER & CRUST
LEATHER MADE OUT OF BUFF, SHEEP SKINS, GOAT SKINS & COW
HIDES.**

Shakti Shiromani Shukla
SSV Enterprises
406, 2nd Floor, Padam Tiwer-1,
UPSE Building, Civil Lines, Kanpur
(India)-208001
E-mail: ssvimpex@hotmail.com
Website: ssvimpex.com
Call & WhatsApp - +918299483332

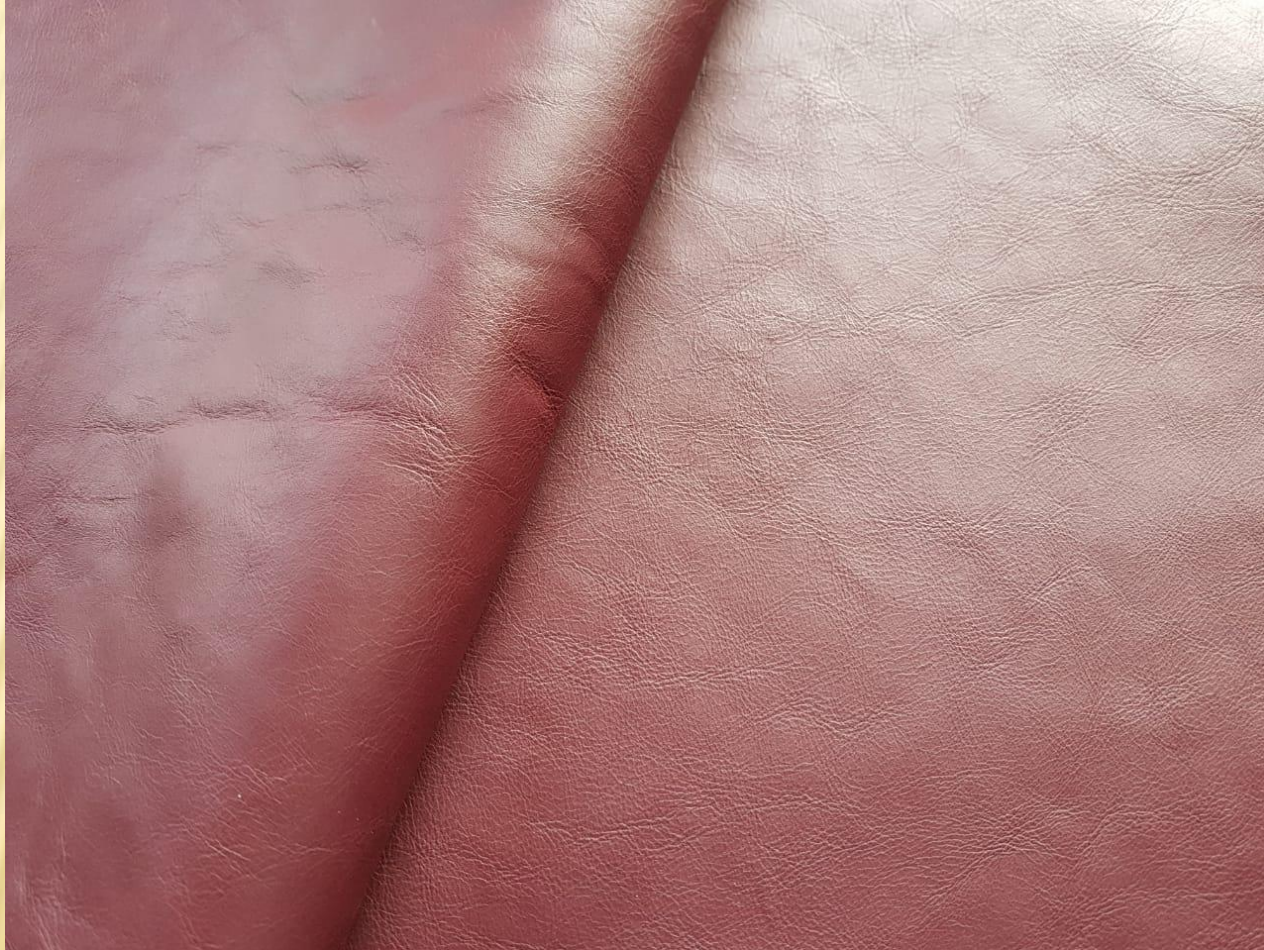
COW ANILINE NAPPA

THICKNESS - 1.2/1.4 MM



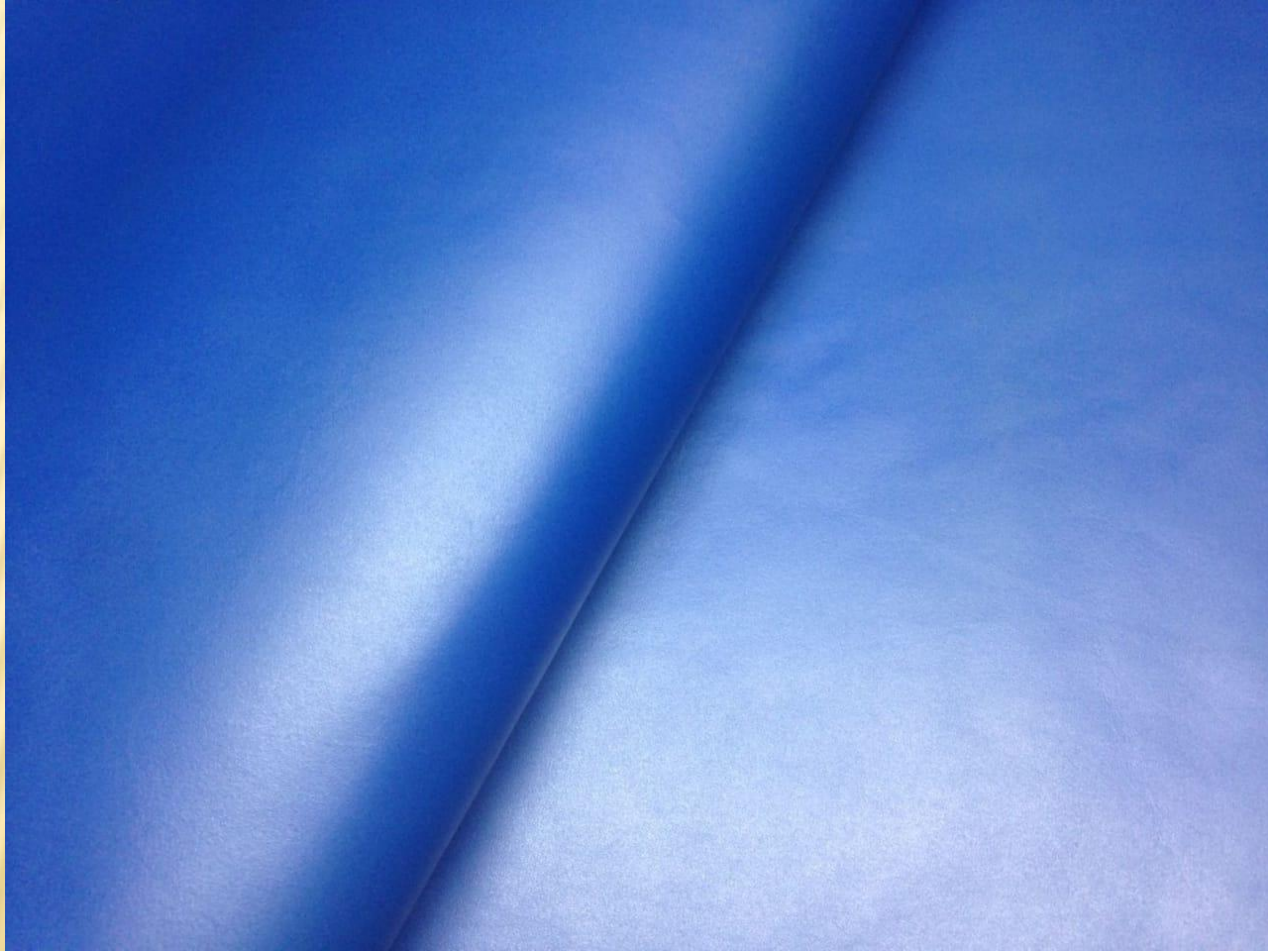
COW CRUNCH FOR SHOES & BAGS

THICKNESS - 1.1/1.3 MM



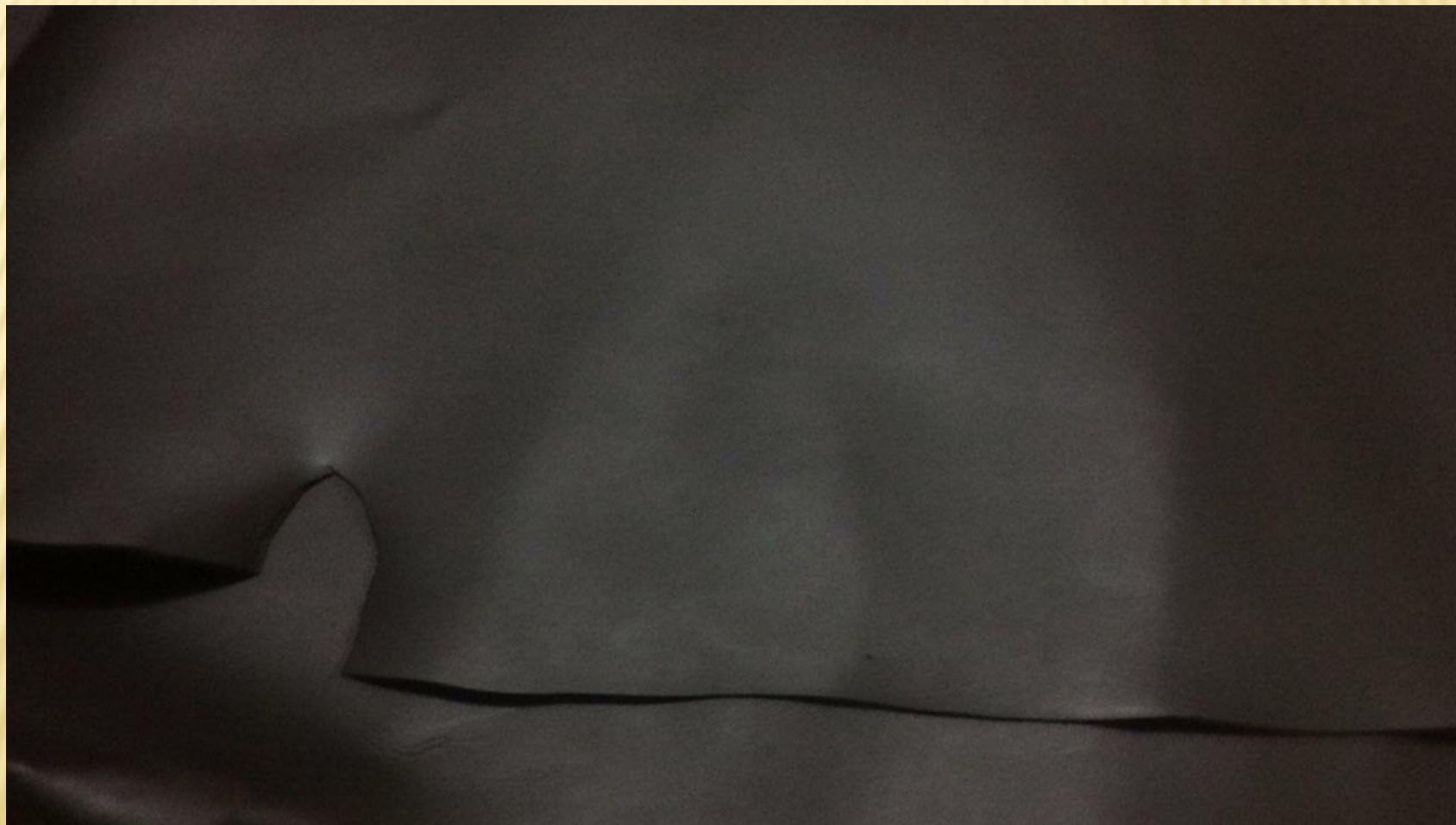
COW FLAT GRAIN

THICKNESS - 1.2/1.4 OR 1.6/1.8 MM



COW FLAT GRAIN LEATHER-BLACK

THICKNESS - 1.8/2.0 MM



COW FLAT GRAIN – ORANGE
THICKNESS – 1.2/1.4 MM



COW MAT PRINT

THICKNESS - 1.1/1.3 MM



COW PRINTED NDM
THICKNESS - 1.2/1.4 MM

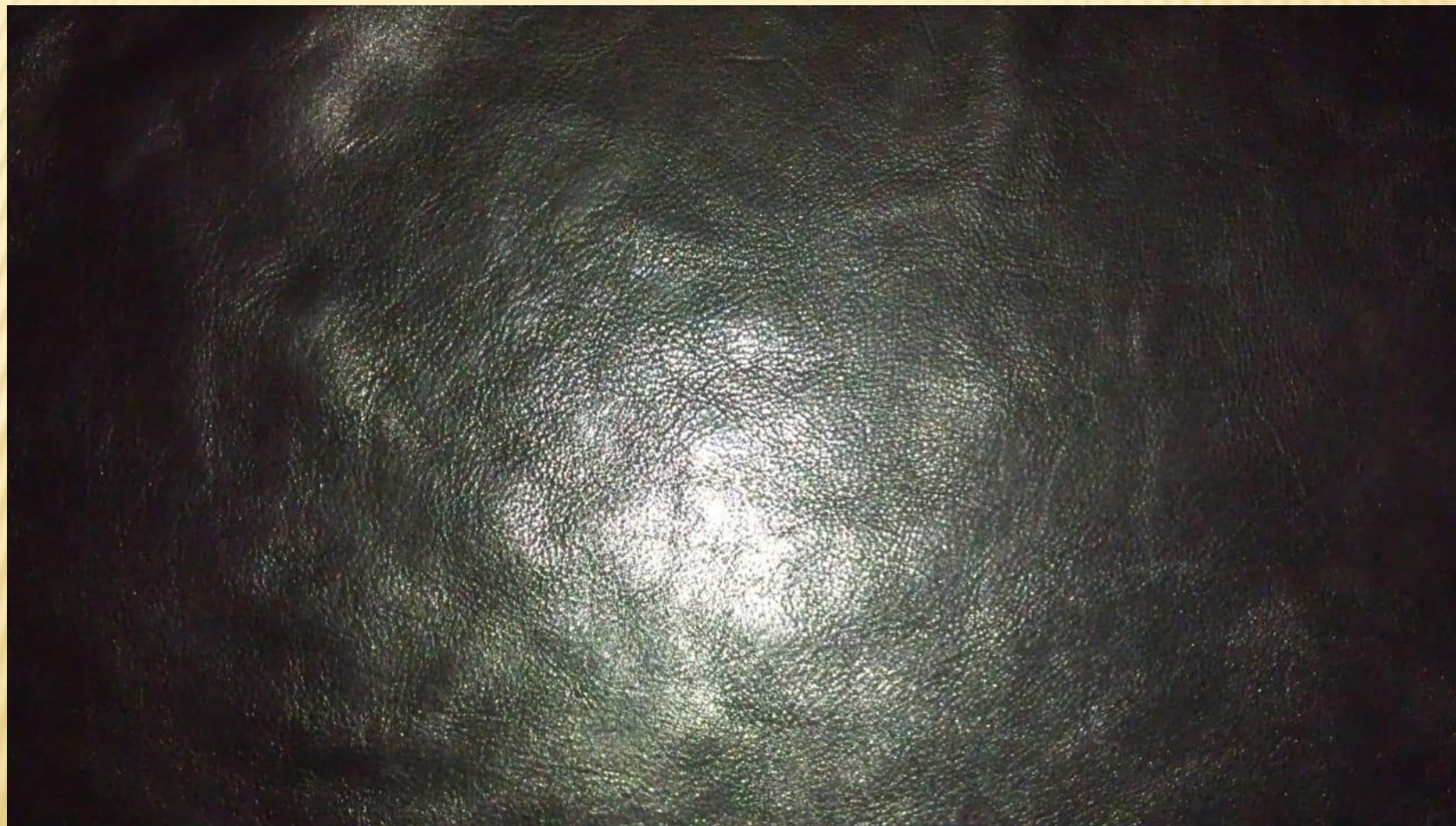


COW OIL PULL UP THICKNESS - 1.2/1.4 MM



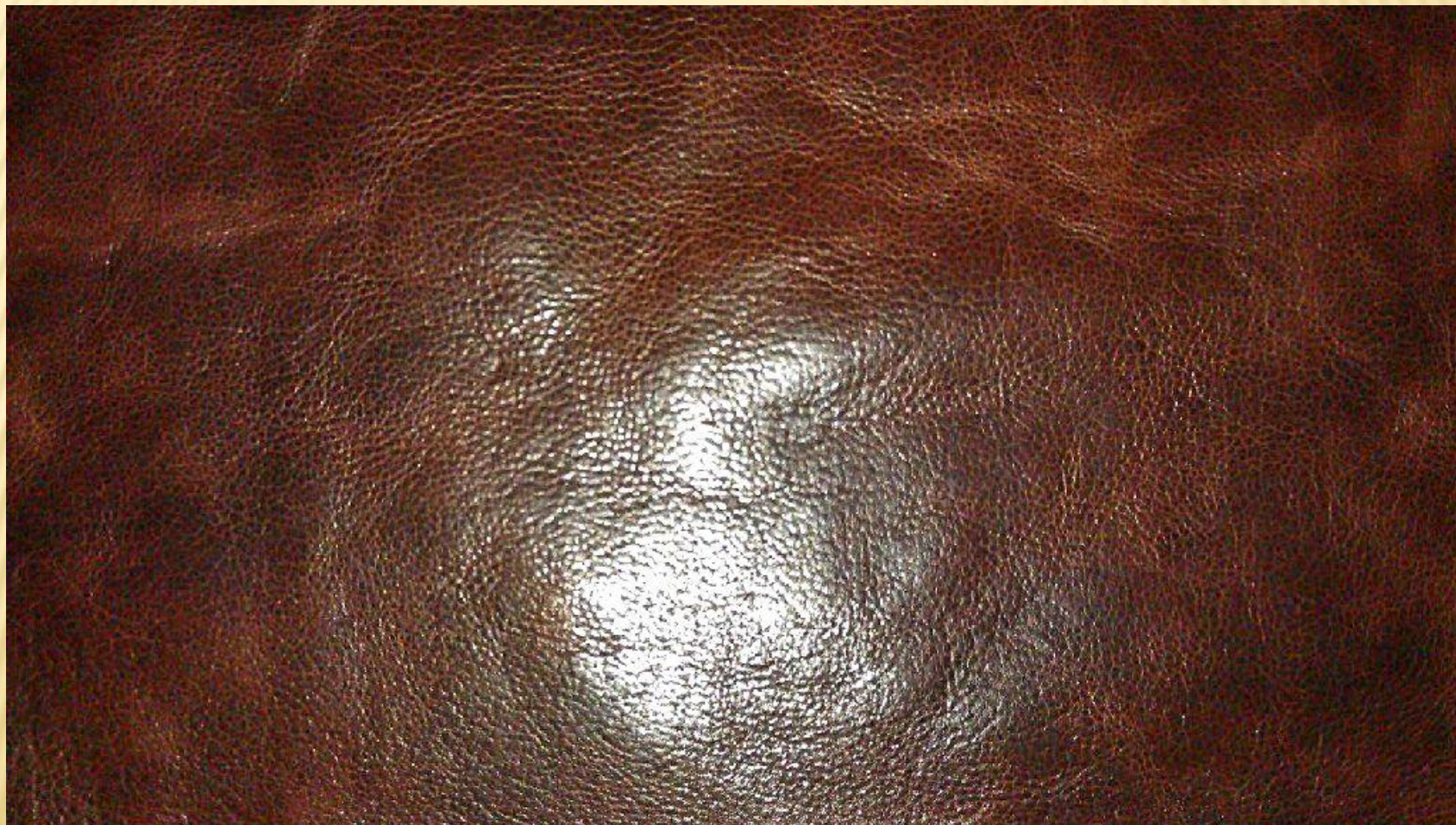
COW SAVAGE VEGETABLE TANNED – BLACK

THICKNESS – 1.2/1.4 MM



COW SAVAGE VEGETABLE TANNED- BROWN

THICKNESS - 1.2/1/.4 MM



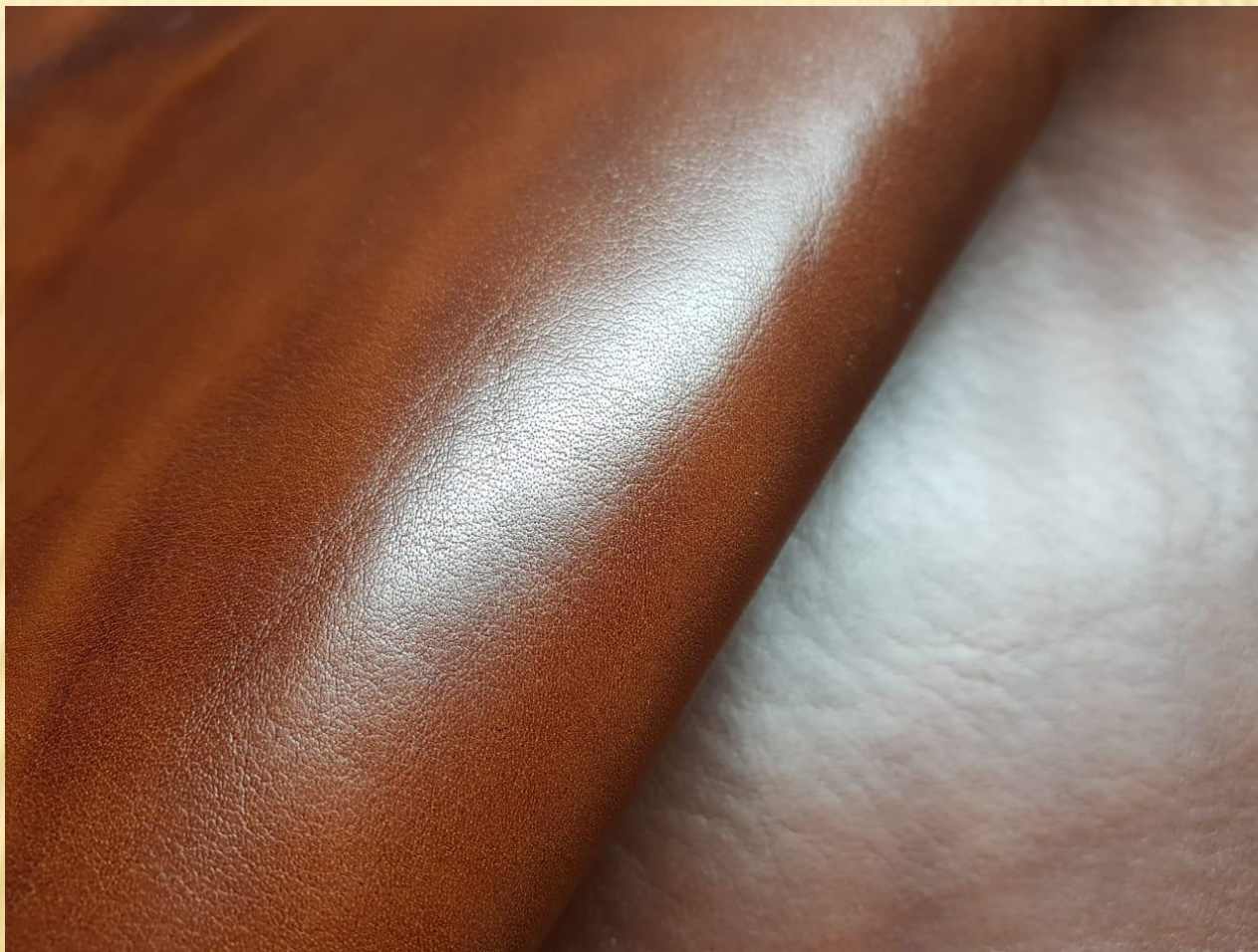
COW SONATA BRUSH OFF MAROON

THICKNESS - 1.2/1.4 MM



COW SONATA BRUSH OFF-TAN

THICKNESS - 1.2/1.4 MM

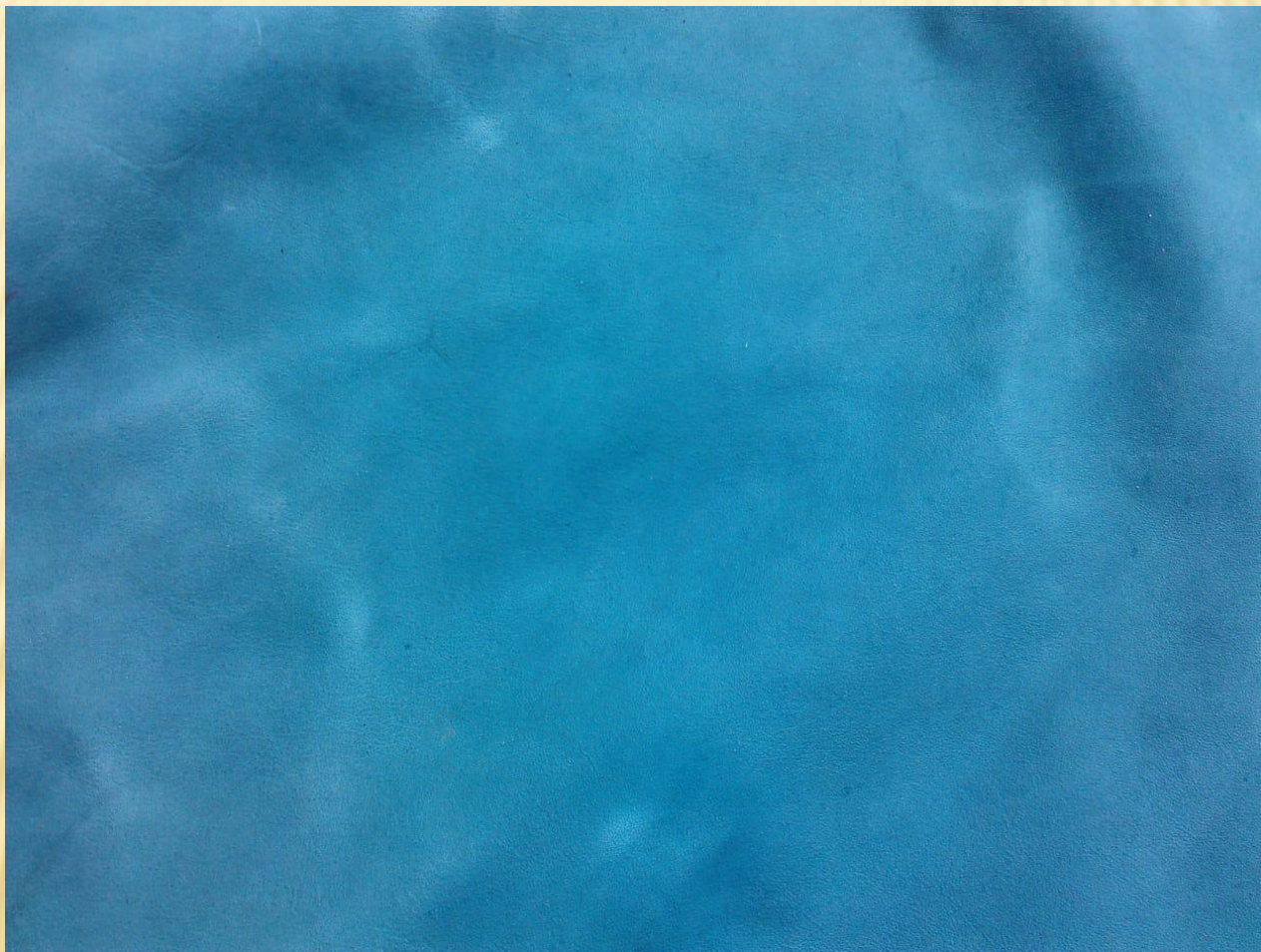


COW SUFI NAPPA – BLACK

THICKNESS – 1.1/1.3 MM

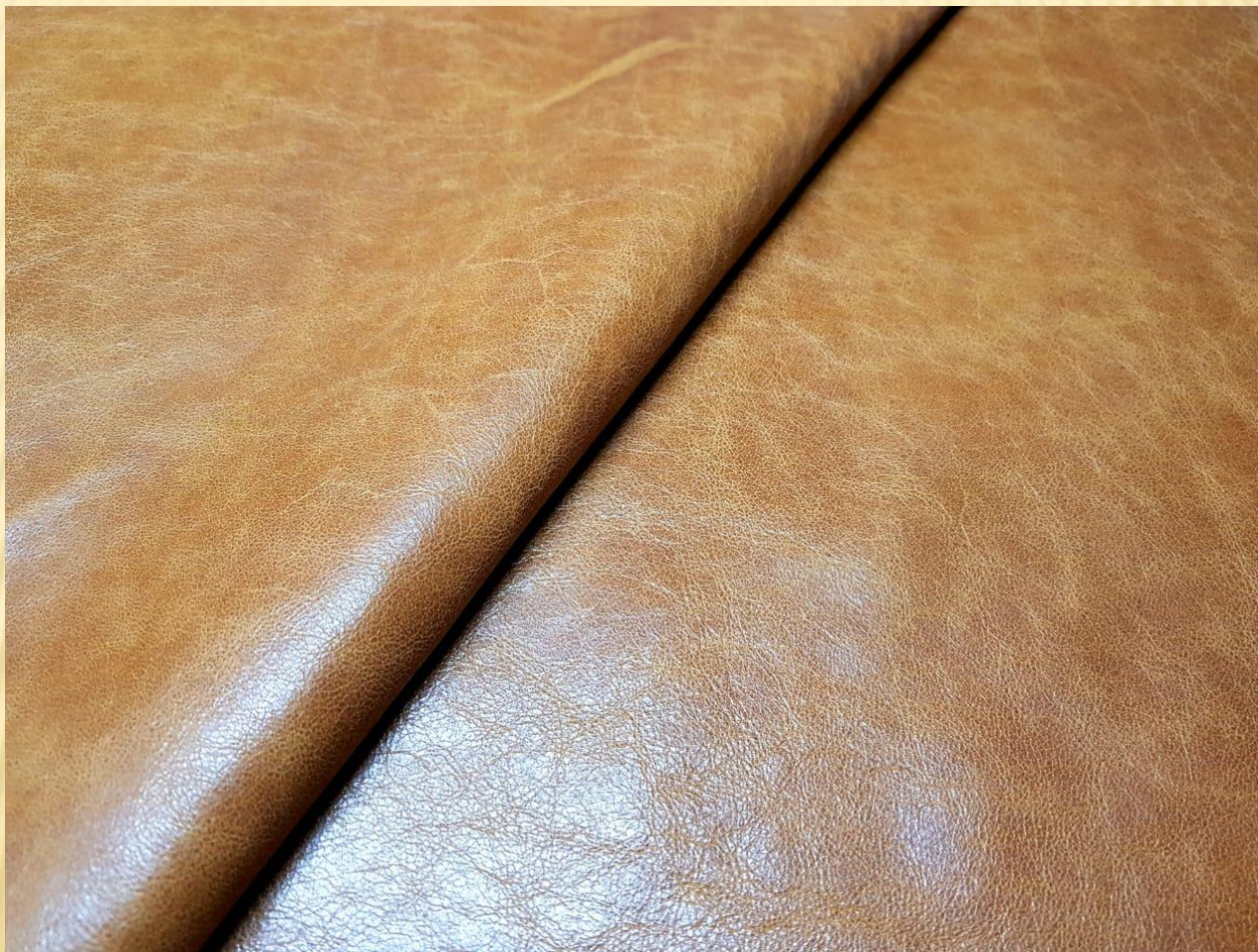


COW TIMEZ CYAN
THICKNESS - 1.1/1.3 MM



COW CRUNCH UPHOLSTERY

THICKNESS - 1.2/1.4 MM



BUFFALO WASH VEGETABLE TANNED

THICKNESS - 1.2/1.4 MM



EMERALD GREEN NDM

THICKNESS - 1.2/1.4 MM



GOAT FOIL LEATHER – HANDBAGS

THICKNESS – 0.8/0.9 MM



GOAT GARMENT SUEDE

THICKNESS – 0.6/0.7 MM



GOAT NAPPA

THICKNESS – 0.7/0.8MM



GOAT SHOE SUEDE

THICKNESS - 0.9 - 1.0 MM



GOAT UPPER FOR SHOES

THICKNESS – 0.9/1.0 MM



SHEEP CHROME FREE LINING- BEIGE

THICKNESS – 0.7/0.8 MM



LAMB NAPPA

THICKNESS – 0.6/0.7MM



SHEEP UPPER FOR SHOES

THICKNESS – 0.9/1.0 MM



SHEEP NAPPA

THICKNESS – 0.6/0.7MM



SHEEP NAPPA

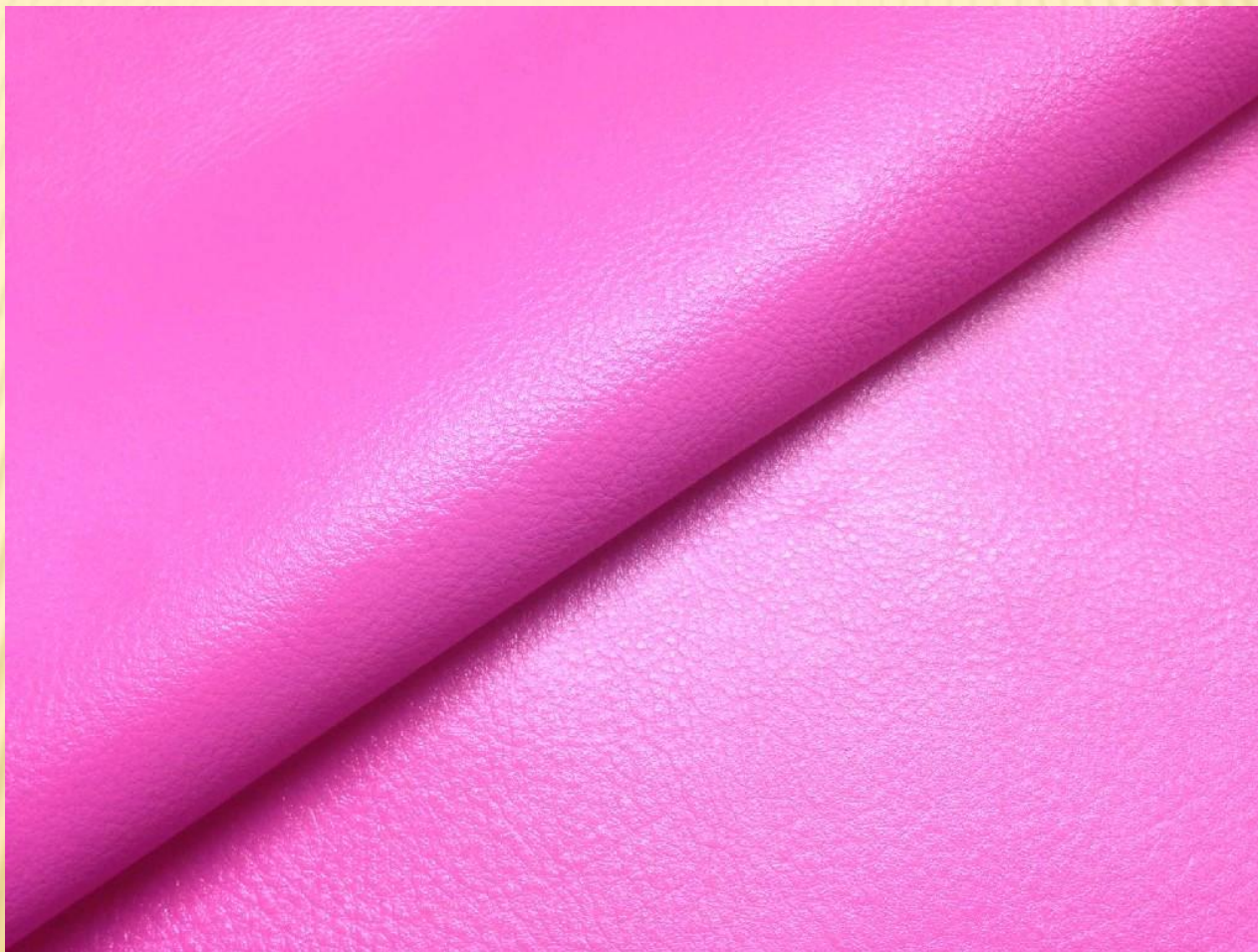
THICKNESS – 0.6/0.7 MM



SHEEP LINING THICKNESS – 0.7/0.8MM



COW NDM – PINK
THICKNESS – 1.2/1.4



COW NDM

THICKNESS - 1.2/1.4MM

