



GURUKRUPA

ENGINEERING WORKS

Company

Gurukrupa Engineering Works (GEW) a very well recognised name having its specialisation in designing and building high performance and high quality attachments for various makes and models of earth moving machines.



Products

Special purpose Long boom / arm

Buckets (All types of excavators)

Standard boom / arm

Loader arms (For backhoe loaders & wheel loaders)

Build a product
with unmatched strength



**Actual photos

Boom & arm

With Unmatched Strength

- **High Strength of the product**

Product designs are accomplished & stimulated by advanced softwares.

Parts which undergo highest load in working conditions are provided with additional supports from both outer & inner region.

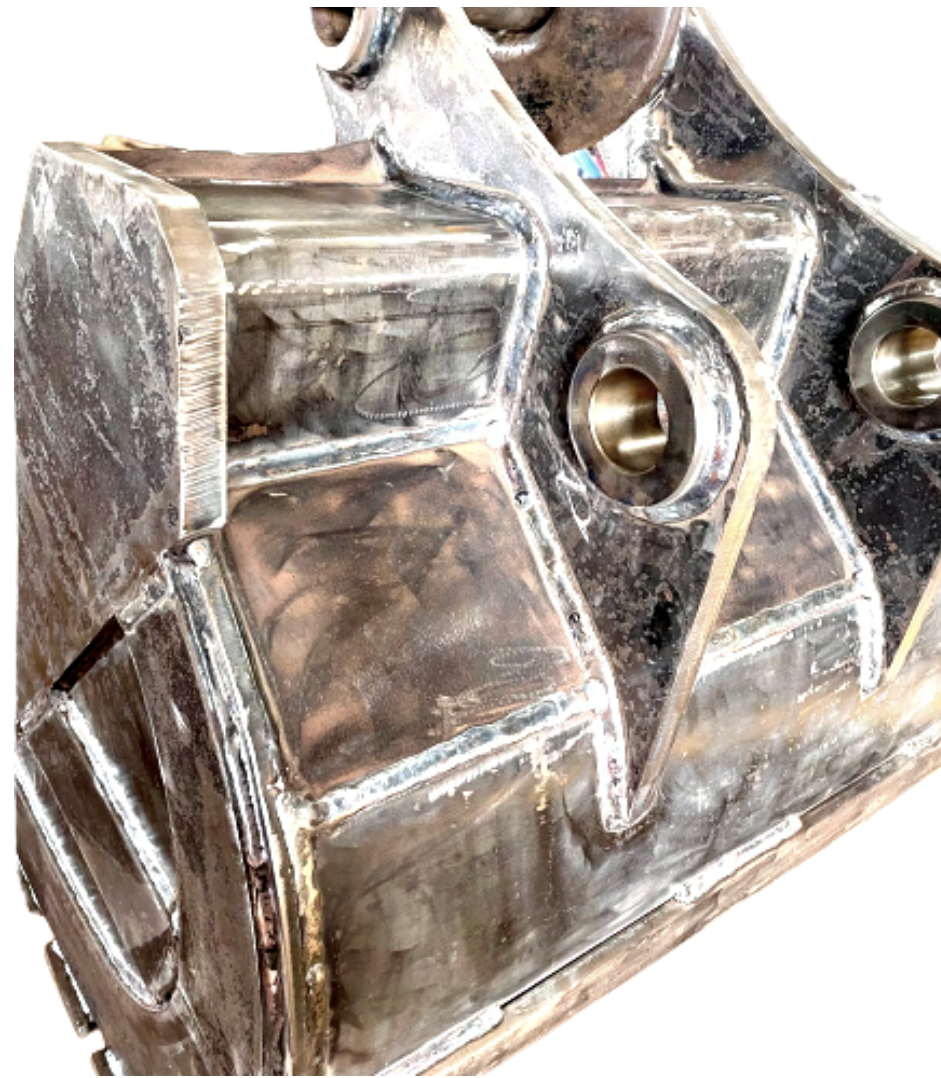
Our special purpose Long boom attachments (from 18m to 22m) are very much appreciated by the market, we have more than 100 customers for whom we have designed and fabricated special purpose (>20 meter) long booms .

- **Types of boom & arm we provide:**

- a. Standard boom & arm
- b. Long reach boom & arm attachment
- c. Demolition boom (3-span)



Build a product
highly durable



**Actual photos

Buckets

With highest attainable quality.

- **Highly durable -**
We use high strength, abrasion resistant steel.
- **High quality of welding -**
Full penetration welds that fuse and join the Entire interface between the materials.
- **Types of buckets we provide:** (for all types of excavators)
 - a. Standard GP Bucket (General purpose)
 - b. Standard HD Bucket (Heavy duty)
 - c. Nest / Mesh buckets
 - d. Grab buckets

Build a product
to maximise output



**Actual photo

Loader arm

Optimised design for maximum productivity

- **Designed for maximum output**

The arm we designed is optimum in terms of length and the loading angle that evenly distributes the load over the whole span of the arm.

- **Flawless design**

The centre of gravity of the bucket and load are closer to the machine maximising the machines stability and reducing the dangers of the machine tipping over.

- **Key Points**

1. High strength of the structure.
2. Uniform and high penetrated weld joints.

Technology

- Our products are processed with latest state-of-the-art machineries to ensure highest attainable quality for every piece we produce.
- We invest heavily in the latest high-tech equipment to stay abreast with the industry.
- Product design are accomplished by utilizing latest CAD software, simulated via catia and other tools, ensuring optimum design integrity.
- Welding and cutting is done by advanced robotic cnc machine to ensure the highest attainable quality and consistency.



We Serve



Thank You.!

Gurukrupa Engineering Works

Palus - Turchi road, Tasgaon, Sangli, Maharashtra, India.

Email - gurukrupaengineering@hotmail.com **Cell** - (+91) 9764233544.

