

MATOS VALVES
(AN ISO 9001 : 2015 CERTIFIED COMPANY)

M. : +91-9833712080 / 9833715055 Email : matosvalves@gmail.com

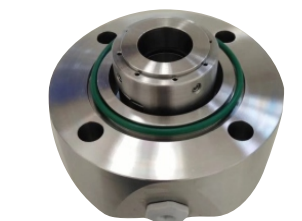
Website : www.matosvalves.com



(AN ISO 9001 : 2015 CERTIFIED COMPANY)



MATOS VALVES



"WE DON'T COMMITMENT ON THE BUSINESS, WE BUSINESS ON THE COMMITMENT"

Profile

"MATOS" Valves, it is my pleasure to introduce and present to you our company. Manufacturers and Exporters of valves for specialized field such as Oil & Gas, Offshore, Petrochemical, Power, Marine and General Industry.

We have our manufacturing facilities in Ahmedabad (Gujarat) have traditionally been center for manufacturing engineering goods in India. With a second most modern plant yet in the offing in the outskirts of great city of Mumbai - India.

OUR BUSINESS CONCEPT :

"DON'T COMMITMENT ON THE BUSINESS,

WE BUSINESS ON THE COMMITMENT" not just product Quality, but quality in the way that We choose to do business, Quality in the way that we deal with our suppliers and ancillaries and very importantly, we believe in providing "Zero Defect" Product to our client.



TC-NRV



Safety Valve



Control Valve



Gate Valve



Ball Valve



Knife Gate Valve



Mechanical Seals



DB & B Valve

MATERIAL OF CONSTRUCTION		FORGED CAST	A105, F304, F304L, F316, F316L, F11, F22, F5, F9 WCB, CF8, CF8M, CF3, CF3M, LCB, LCC, WC6, WC9, C-12, Duplex, Inconel - 625, 825		
PRESSURE CLASS		FORGED CAST	800#, 1500#, 2500# 150#, 300#, 600#, 900#, 1500#, 2500#	END CONNECTION - SW / SCREWED END CONNECTION - FLANGED / RTJ - FLANGED / BW ENDS	
TYPE OF VALVE	SIZE RANGE	CONSTRUCTION		DESIGN STD	TESTING STD
GATE VALVE	FORGED CAST 0.5" - 2" 1.5" - 44"	Bolted Bonnet OS&Y Type Bolted Bonnet OS&Y, Rising Stem		API 602/BS5352 API 600	API 598/BS6755 API 598
GLOBE VALVE	FORGED CAST 0.5" - 2" 1" - 24"	Bolted Bonnet OS&Y Bolted Bonnet OS&Y, Rising Stem		BS.5352 BS1873	BS-6755 BS-6755
CHECK VALVE	FORGED CAST 0.5" - 2" 2" - 24"	Bolted Cover, Lift Type, Wafer Swing Check		BS-5352 BS-1868	BS-5755 BS-5755
BALL VALVE	FORGED CAST 0.5" - 2" 2" - 24"	2/3 Piece Design 1/2/3 Piece Design / Trunnion Mounted		BS-5351 BS-5351/ API-6D	BS-6755 BS-6755 / API-6D
SAFETY RELIEF VALVE	FORGED CAST 0.5" x 0.5" Upto 8" x 10"	Spring loaded, Full Lift, Angle Type, Side Discharge, Pilot operated S.R.V.		API526 / API520	API527 / ASME VIII DIVISION - I
PLUG VALVE	FORGED CAST 0.5" - 2" 2" - 16"	PTFE Sleeved, Inverted Plug Pressure Balanced		BS-5353 BS-5353 / API 599	API-6D API-6D
PRESSURE REDUCING VALVE	0.5" - 6" -	Pilot Operated Press Reducing Valve		BS STD	BS-5755
BUTTERFLY VALVE	1.5" - 24" -	Centric / Offset / Wafer Type / Double Flanged		BS 5155 AWWA-C 504	BS-6755
SLUICE VALVE	2" - 28" -	Bolted Bonnet, Metal Seated Non-rising stem		IS-14846	IS-14846
STRAINERS	0.5" - 24" -	'Y' Type / Basket Type / Bolted Cover		BS-5352/BS-1873	BS-6755
STEAM TRAP	0.5" - 4" -	Thermodynamic / Ball Float Steam Trap		Our Mfg. STD	As per Pre. Class
ACTUATION	-	Electric, Pneumatic & Hydraulic Actuators can be provided.			