

THE CLEANEST CATALOGUE EVER.

TENNANT[®]
COMPANY



IPC

25 YEARS IN INDIA

INTEGRATED PROFESSIONAL CLEANING



A leading player in the professional cleaning market.



#1 Italian
Manufacturer



Wide
Portfolio



Global
Distribution



Vertically
Integrated

> IPC is Italy's #1 manufacturer of machines and equipment for professional cleaning.

> IPC provides a complete range of professional equipment including scrubber-driers, sweepers, professional vacuum cleaners, high pressure washers and manual tools.

> Distributed in over 120 countries. Nine owned international subsidiaries, focused on sales and after-sales.

> IPC has a unique vertically integrated manufacturing capability with five state-of-the-art plants located in the North of Italy, and two facilities in China and Brazil.



PORTOTECNICA

50000 pieces of hp cleaners a year and a **4500 sq/m** of warehouses.

Number of patents: 12

Certificates: UNI EN ISO

9001:2015, UNI EN ISO 14001:2015, BS OHSAS 18001:2007



GANSOW

30000 pieces of floorcare machines a year and a **7000 sq/m** of warehouses.

Number of patents: 35

Certificates: UNI EN ISO

9001:2015, BS OHSAS 18001:2007



SOTECO

250000 pieces of vacuums a year and a **1800 sq/m** of warehouses.

Number of patents: 8

Certificates: UNI EN ISO

9001:2015, UNI EN ISO 14001:2015, BS OHSAS 18001:2007



EUROMOP READYSYSTEM PULEX

7 million pieces of cleaning equipments a year and **11500 sq/m** of warehouses.

Number of patents: 18

Certificates: UNI EN ISO

9001:2015



ECODESIGN
FOR
PROFESSIONALS

HOW TO CHOOSE THE RIGHT VACUUM CLEANER ?



The vacuum cleaner is a cleaning equipment allowing the recovery of waste, dust or mixtures from floors, surfaces, tools or other machines.

It is a must-have cleaning equipment ensuring the proper level of hygiene of public or industrial environments, increasing productivity and allowing the proper disposal.

It is important to know how to choose it.

The right choice depends essentially on the use you will make of it.

There are three key questions to answer:

1 - HOW MANY HOURS DO YOU VACUUM PER DAY?

→ Running hours affect the expected lifetime of your vacuum cleaner.

HOURS OF OPERATION (PER DAY)	EXPECTED LIFE TIME	
	CARBON BRUSH MOTORS	TURBINE SIDE CHANNELS
1h	3 YEARS	-
2h	2 YEARS	-
3h	1 YEAR	-
4h	6 MONTHS	5 TO 10 YEARS
8h	3 MONTHS	5 TO 10 YEARS
24h	-	2 YEARS

2 - HOW MUCH MATERIAL DO YOU THINK TO RECOVER IN A WEEK?

→ Volumes affect the choice of the collection tank, power to pick up quickly and best handling system.

3 - WHAT TYPE OF MATERIAL DO YOU NEED TO RECOVER?

→ The type of material gives indication of the filtration system to propose and its application.

IPC has developed specific vacuum cleaners for different applications: from fine, combustible and dangerous dust to liquids, oils or mixtures.

CERTIFIED ANTI-BACTERIAL TREATMENT

Sanifilter

Antimicrobial treatment

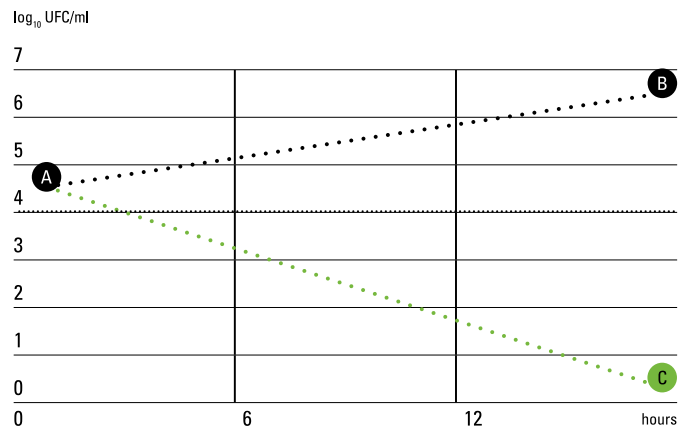
Anti-bacterial filter and plastic

The Sanifilter filter treatment can reduce the bacterial charge of vacuumed air whereas Anti-bacterial plastics which the vacuum unit is made of inhibit the development and proliferation of bacteria on the surface. The Anti-bacterial plastic is shock resistant and recyclable in full compliance with environmental standards.

Antibacterial plastic



STOP BACTERIA



A: Number of living bacteria after inoculum on reference material
 B: Number of living bacteria after incubation on reference material without antibacterial treatment
 C: Number of living bacteria after incubation on reference material with antibacterial treatment

INNOVATION



SANIFILTER

DETAILS

- The presence of Ag⁺ ions destroys the bacteria cell membrane
- A revolutionary product leading this new nanotechnology era, the SANIFILTER treatment was created by a group of scientists to meet the growing needs for better healthiness.
- The SANIFILTER treatment makes it possible to inhibit and eliminate: BACTERIA, VIRUSES, FUNGUS (yeast and mould) and MICRO PARASITES.

DATA REFERENCE

- Anti-bacterial activity verified according to the JIS L 1902:2008 International Standard both with Staphylococcus Aureus (ATCC 6538P) and Klebsiella Pneumoniaes (ATCC 4352)

Professional Vacuum Cleaners **DRY** **ISY LI-ION**



Features

- Ideal for vacuuming small debris, fine dust and cold ash
- Suitable for cleaning after small renovation or maintenance jobs
- Light and compact
- Filter cleaning system



MICRO BP

Features

- Suitable for Aircraft cleaning
- Micro vacuum cleaner with plastic tank, ideal for small cleaning operations

Note: The use of the disposable paper bag inside the dust collection tank is highly recommended

YP 1/5 BACKPACK



Features

- Professional Back Vac
- High efficiency vacuum motor
- 3 stage filtration system



YP 1/6 ECO B

Features

- Eco-motor
- Eco-brush
- Ideal for small areas with limited space thanks to compact design

LP 1/12 & LP 1/16



Features

- Silent
- Powerful
- Multi-purpose
- Easily used on steps
- Easily stored
- Cartridge filter
- High performance



Aspiro 120 Plast

Features

- Professional performance
- Ergonomic and comfortable
- Easily stored
- Easily used on steps

Model	Application	No. of Motors	Max Power (W)	Supply (V/Hz)	Suction (mmH ₂ O)	Air flow (m ³ /hr.)	Tank Capacity (Ltrs.)	Weight (Kg)	Noise Level (dbA)
ISY LI-ION	Dry	1	200	DC 18V - 4Ah	1105	59	5	2.4	73
ISY	Dry	1	1000	220-240/50	1770	97	5	3	72
MICRO BP	Dry	1	1300	110-120/400	2870	210	4.6	3	62
YP 1/5 BACKPACK	Dry	1	900	220-240/50	2468	166	5	4.8	57
YP 1/6 ECO B	Dry	1	900	220-240/50	2200	108	10	3.7	72
LP 1/12	Dry	1	900	220-240/50	2260	158	12	5.8	63
LP 1/16	Dry	1	900	220-240/50	2260	158	16	5.8	63
Aspiro 120 Plast	Dry	1	1000	220-240/50	2530	165	22	5	62

Professional Vacuum Cleaners **WET & DRY**

Premium Range



ASPIRO PLAST

Features

- 2 stage motor for longer operations
- Suitable for wet and dry vacuuming
- Motors with double insulation
- Head with anti-foam system
- Robust polypropylene tank with anti-bacterial properties
- Head with cable hook
- Trolley with tilting system for big quantity of waste (ASPIRO 730-740)

ASPIRO STEEL

Features

- 2 stage motor for longer operations
- Suitable for wet and dry vacuuming
- Head with anti-foam system
- Trolley with tilting system for big quantity of waste (ASPIRO 730-740)
- Head with cable hook



Model	Application	No. of Motors	Max Power (W)	Supply (V/Hz)	Suction (mmH ₂ O)	Air flow (m ³ /hr.)	Tank Capacity (Ltrs.)	Tank (Body Type)	Noise Level (dbA)
Aspiro 150 Plast	Dry / Wet	1	1200	220-240/50	2470	210	22	PP	65
Aspiro 151 Plast	Dry / Wet	1	1200	220-240/50	2470	210	35	PP	65
Aspiro 730 Plast	Dry / Wet	2	2400	220-240/50	2470	420	72	PP	68
Aspiro 740 Plast	Dry / Wet	3	3300	220-240/50	2470	630	72	PP	70
Aspiro 150 Steel	Dry / Wet	1	1200	220-240/50	2470	210	18	SS	65
Aspiro 151 Steel	Dry / Wet	1	1200	220-240/50	2470	210	33	SS	65
Aspiro 730 Steel	Dry / Wet	2	2400	220-240/50	2470	420	78	SS	68
Aspiro 735 Steel	Dry / Wet	2	2400	220-240/50	2470	420	62	SS	68
Aspiro 740 Steel	Dry / Wet	3	3300	220-240/50	2470	630	78	SS	70

Professional Vacuum Cleaners **WET & DRY**

Economy Range



AMSTERDAM PLAST

Features

- With single-stage motor
- Suitable for wet and dry vacuuming
- Shockproof polypropylene tank with anti-bacterial properties, resistant to wear
- Trolley for easy manoeuvrability
- Head with anti-foam system

AMSTERDAM STEEL

Features

- With single-stage motor
- Suitable for wet and dry vacuuming
- Trolley for easy manoeuvrability
- Head with anti-foam system
- Robust steel tank



Model	Application	No. of Motors	Max Power (W)	Supply (V/Hz)	Suction (mmH ₂ O)	Air flow (m ³ /hr.)	Tank Capacity (Ltrs.)	Tank (Body Type)	Noise Level (dbA)
Amsterdam Plast 115	Dry / Wet	1	1500	220-240/50	2230	255	15	PP	65
Amsterdam Plast 315	Dry / Wet	1	1500	220-240/50	2230	255	23	PP	65
Amsterdam Plast 429	Dry / Wet	2	2800	220-240/50	2230	510	62	PP	68
Amsterdam Steel 115	Dry / Wet	1	1500	220-240/50	2230	255	15	SS	65
Amsterdam Steel 315	Dry / Wet	1	1500	220-240/50	2230	255	23	SS	65
Amsterdam Steel 429	Dry / Wet	2	2800	220-240/50	2230	510	62	SS	68

Upholstery/Carpet Vacuum Cleaners

GARAGE



Optional Accessories for Garage



Features

- Extractors are multivalent equipments, which, thanks to their injection-extraction system, help you to wash quickly every kind of surface: moquettes, carpets, arm-chairs, curtains, floor (marble, rubber, etc.), walls and car seats
- All these machines may be used even as normal wet and dry vacuum cleaners

Features

- In addition to the standard accessories these models may be used with power brushes *Atlanta* and *Florida* which, thanks to their injection / extraction system, enable you to wash any kind of wide surfaces (carpets or floors) in an extremely short time



LAVA

Features

- Professional spray injection and extraction for small and medium cleaning operations
- Equipped with interchangeable tools allowing to wash and dry all the floors (carpet, marble, rubber, linoleum etc.)
- Also suitable for wet and dry vacuum operations
- Recyclable shockproof anti-bacterial polypropylene plastic
- High performance
- Head with anti foam system
- Chemical Sprayer

Model	No. of Motors	Max Power (W)	Supply (V/Hz)	Suction (mmH ₂ O)	Air flow (m ³ /hr.)	Tank Capacity (Ltrs.)	Detergent Tank Capacity (Ltrs.)	Pump (W)	Pump Capacity Pr. (bar)/ Flow (lpm)
Lava	1	1200	220-240/50	2470	210	27	6.2	48	2/0.8
Garage	2	2400	220-240/50	2470	420	62	25	48	2/0.8

Model	Motor	Supply (V/Hz)	Cable (m)	Weight (Kg)	Nozzle (mm)	Brush width (mm)	Working width (mm)	Tube	Brush
Atlanta/ Florida	1400 rpm - 120 W	220-240/50	8.5	14.5	2xø1.4	470	370	SS	Rotating

WHAT IS YOUR INDUSTRY & APPLICATIONS ?

Within industrial sector several multipurpose vacuum cleaners are used according to the working environment and the material to be recovered. IPC has developed specific industrial solutions for different applications: from fine dust and liquids to oil materials and shavings.

APPLICATIONS:

- ▶ CONTINUOUS USE
- ▶ FINE DUST
- ▶ DANGEROUS DUST
- ▶ EXPLOSIVE POWDERS
- ▶ OILS, SHAVINGS AND PRODUCTION SCRAPS

INDUSTRIES	COMMONLY USED IN
BASIC/DAILY USE SOLUTIONS FOR GENERAL CLEANING	Removal of waste material in heavy duty application
	Collection of light dust, medium quantity of fine dust and the other remaining debris.
	Cleaning of industrial warehouses
	Cleaning of technical and working areas
METALWORKING & IRONWORKING INDUSTRY	Removal of metal shavings and coolant from machine tools
	Suction of processing waste during grinding
	Removal of cutting or drilling scraps
	Suction of fumes from welding or ovens
FOOD & GLASS INDUSTRY	Cleaning of processing and packing/wrapping machineries
	Suction of liquid during the sanitation of surfaces
	Collection of powders and fumes from production lines
	Cleaning operations in case of accidental spills and breakages
PHARMA & CHEMICAL INDUSTRY	Cleaning of working and packaging machineries for capsules, granules, cosmetics and raw materials production
	Suction of liquid after surfaces cleaning
	Suction of fumes and clouds from mixers
	Cleaning operations in case of accidental spills and breakages
RUBBER & PLASTIC INDUSTRY	Loading of plastic granules
	Recycling and separation of waste
	General maintenance of the environments and production machineries
	Collection of powders and fumes from production lines
BUILDING INDUSTRY	Suction of masonry scraps
	Disposal of hazardous materials from remediation
	Floor polishing
	Removal of mixtures and debris
WOOD INDUSTRY	Sanding of doors, windows and furnishings
	Cutting and finishing of wood panels
	Hardwood floors polishing
	Removal of wood shavings
MILLING INDUSTRY, FEED MILLS & TOBACCO PROCESSING	Cleaning of the environments and production plants
	De-dusting of production machines through integrated suction
	General maintenance of warehouses
	Cleaning operations in case of accidental spills and breakages

FILTRATION SYSTEM FOR CONTROLLING AIR CONTAMINATION

We are able to offer high efficiency filtering media and solutions for the challenges the cleaning industry is facing. Here below you can find more details about HEPA/ULPA filters and LMH class vacuum cleaners

WHY CHOOSE A HEPA / ULPA VACUUM CLEANER

HEPA (High Efficiency Particulate Air filter) and ULPA (Ultra Low Penetration Air filter) filters are classified by the European standard EN 1822. These filters, if designed correctly, are able to guarantee a sterile air flow.

Filtration efficiency is based on particle size counts so penetration is higher in the range between 0.02 and 0.5 micron (MPPS).

TYPE	CLASSIFICATION	EFFICIENCY	PENETRATION	
HEPA	H13 H14	>99.95% >99.995%	≤0.05% ≤0.005%	“ABSOLUTE FILTERS” WITH VERY HIGH EFFICIENCY
ULPA	U15 U16 U17	>99.9995% >99.99995% >99.999995%	≤0.0005% ≤0.00005% ≤0.000005%	“ABSOLUTE FILTERS” WITH VERY LOW PENETRATION



FILTER OVER-PRESSURE INDICATORS

The indicator shows the limit level beyond which a monitored emission of the exhaust air in the environment is no longer guaranteed and the entire filter restoration is required.

VACUUM RELIEF VALVE AND FILTRATION LEVEL INDICATOR



In case of a 24h continuous use without the operator’s control, a vacuum relief valve is set as security system against any obstructions that may cause water-lift increase and the possible structure implosion.

An indicator is set to display a possible saturation range, and indicates with a red, green and yellow light 3 different levels of control for when it is vital to restore the filters instead of replacing them.

TANGENTIAL INLET AND CONVEYOR CONE



The cyclonic effect allowed by the tangential inlet helps to reduce material suction speed inside the tank.

This extends the filter life cycle and prevents clogging issues or damages caused by an accidental introduction of material straight to the bottom of the machine without its proper and former passage through the filters.

The inlet metal structure guarantees more solidity and resistance to abrasions and bumps.



PCB PRE-FILTER & ADDITIONAL CARTRIDGE

Specific PCB pre-filters for fine dust protection from filter infiltrations and to improve and facilitate their maintenance and restoration. High efficiency cartridges around 99.99% of 3 micron with HEPA certification and individually tested are used as additional filtration stages to intercept microscopic dusts hazardous to the health and the environment.

INDUSTRIAL VACUUM CLEANERS - DUST EXTRACTORS - HEAVY TOOLINGS

GS 3 MBAG OPT CYC

GS 3 MBAG OPT CYC dust extractor is used to remove masonry scraps and residuals from walling and floor polishing, in sectors such as the construction one. It is also ideal for cleaning conveyors and industrial machinery.

The Cyclone filtration system allows large quantities of fine dust and debris to be removed without risk of clogging. In addition, the HEPA H13 cartridge provides an additional filtration stage.

The peculiarity of GS 3 MBAG OPT CYC is the Maxibag, a disposable bag that allows you to collect the extracted material instantly, in order to avoid direct contact with dust. You can safely remove the bag once full, so you can use the machine immediately.

Features

- Maxibag collection system
- Detachable system for quick replacement of maxibag
- Self discharge valve with best sealing
- AISI 430 industrial framework big and braked wheels
- Multi stage filtration, electrostatic dissipation innovative gasket
- Strong hooks
- Independent motors with light switches
- Microfiber bag HEPA H13 cartridge
- Reliable construction for intensive use



QUICK REPLACEMENT AND DETACHABLE SYSTEM

A simple and immediate system with safety lock allows an easy and quick replacement of a full 20 m ENDLESS BAG with a brand new one.



20 METER LONG MAXI-BAG

This innovative collection system, created in the building sector, where the material to collect is bulky and big, allows to access immediately to the collection bag and have a recovery capacity of 20 m.



SELF DISCHARGE VALVE WITH BEST SEALING

A mechanical and reliable clapet system remains closed when the suction system is in "low-pressure" and it automatically opens when the tank is full or the vacuum cleaner is turned off in order to dispose the material collected inside 'maxi-bag'.

Model	Usage	No. of Motors	Max Power (W)	Supply (V/Hz)	Suction (mmH ₂ O)	Air flow (m ³ /hr.)	Endless Bag Capacity (m)	Noise Level (dbA)
GS 3 MBAG OPT CYC	Dry	3	3500	230/50	2230	765	20	76

Industrial Vacuum Cleaners Solutions for General Cleaning

ASPIRO 840

Ideal for picking up chips with emulsion oil, dust and scraps



Features

- Dry vacuum cleaner with conveyor cone protecting the filter
- Tipping trolley for easy emptying of collection tank
- 3 two-stage bypass motor designed for continuous use
- Filter cleaning through side-mounted lever

PLANET 50P/ 50M

Ideal for industrial warehouses, technical areas



Features

- Dry vacuum cleaner with multi-stage filtration
- Heavy duty induction motor with 3 stage turbine for continuous use
- Equipped with exhaust muffler
- Detachable tank with solid cart

PLANET-1/50-OPT

Ideal for generic working waste



Features

- Dry vacuum cleaner
- Reliable construction for intensive use
- Detachable tank and solid cart
- Manual filter shaker
- Big and braked wheels
- Starshaped filter, PCB pre-filter and additional cartridge

PLANET 140 GL/155 GL

Ideal for generic working waste



Features

- Wet & Dry vacuum cleaner
- Sealant floater & integrated anti-foam system
- Reliable construction for intensive use
- Detachable tank and solid cart
- Manual filter shaker
- Big and braked wheels
- Tangential inlet and conveyor cone

Model	Usage	No. of Motors	Max Power (W)	Supply (V/Hz)	Suction (mmH ₂ O)	Air flow (m ³ /hr.)	Protection (IP)	Tank Capacity (Ltrs.)	Noise Level (dbA)
ASPIRO 840	Dry	3	3300	230/50	2500	645	X4	65	77
Planet 50 P	Dry	1	3000	400/50	2100	350	54	60	77
Planet 50 M	Dry	1	2200	230/50	2100	350	54	60	72
PLANET-1/50-OPT	Dry	1	1500	230/50	1800	220	54	50	74
PLANET 140 GL	Dry / Wet	1	4000	400/50	3000	330	54	90	76
PLANET 155 GL	Dry / Wet	1	5500	400/50	2300	500	54	90	76

Industrial Vacuum Cleaners Solutions for Continuous Use / Heavy Duty

PLANET 200

Ideal for generic industrial waste



Features

- Independent 2 stage motors with light switches
- Detachable tank and solid cart
- Manual filter shaker, big and braked wheels
- Industrial framework AISI 304, with detachable tank
- Tangential inlet and conveyor cone
- Starshaped filter, PCB pre-filter and additional cartridge
- Vacuum relief valve and filtration level indicator

PLANET 300

Ideal for generic industrial waste



Features

- Long lasting turbine with perfect performance
- Detachable tank and solid cart
- Manual filter shaker, big and braked wheels
- Industrial framework AISI 304, with detachable tank
- Tangential inlet and conveyor cone
- Starshaped filter, PCB pre-filter and additional cartridge
- Vacuum relief valve and filtration level indicator

PLANET 755

Ideal for engineering, textile, baked clay, paper and food industries



Features

- Dry vacuum* cleaner for heavy duty and continuous operation
- Reliable construction for intensive use with detachable tank and solid cart
- Industrial framework AISI 304, with tangential inlet and conveyor cone
- Star shaped filter, PCB pre filter and additional cartridge, vacuum relief valve and filtration level indicator

**Can pick up liquids as well if fitted with dedicated float kit, ATEX version also available*

PLANET 775



Model	Usage	No. of Motors	Max Power (W)	Supply (V/Hz)	Suction (mmH ₂ O)	Air flow (m ³ /hr.)	Protection (IP)	Tank Capacity (Ltrs.)	Noise Level (dbA)
Planet 200S	Dry	3	3800	230/50	2795	630	X4	100	76
Planet 300S	Dry	1	3000	400/50	2500	330	54	100	77
PLANET 755S	Dry	1	5500	400/50	2400	510	54	100	76
PLANET 755S AD	Dry	1	5500	400/50	3200	520	54	100	76
PLANET 775	Dry	1	7500	400/50	4000	520	54	100	74
PLANET 775 AF	Dry	1	7500	400/50	2700	700	54	100	76

Industrial Vacuum Cleaners Metal working & Iron working Industry

GS 2/62 H TC PN



Features

- Ideal for cutting, polishing and grinding of metal surfaces
- H Class Certified
- Working together with electrical or pneumatic tools
- High suction power and filter efficiency, tool remote control
- Warning light for speed control and tool holderplate
- Multi-stage filtration with HEPA 14
- Filter over-pressure indicators

GC 3/90 ECOMET



Features

- Wet and Dry vacuum cleaner with large capacity polyethylene tank
- Tipping trolley for easy emptying of collection tank
- 3 two-stage Bypass motor
- Partition wall between two tanks for stopping small concentration of acid fumes, oil & dust particles
- Solution to vacuum different kinds of production waste

GS 3/78 OIL



Features

- Wet and Dry vacuum cleaner
- For small metalworking Industries
- Designed to separate oil from shavings
- DFS - dual filtration system for simultaneous dry and wet pick up
- 2 stage motors and turbine
- Sieve basket & anti-block floating system
- Safety valve and drain system
- Tangential inlet and conveyor cone

PLANET OIL 3-PHASE



Features

- For large metalworking industries
- Solution for intensive use 24/24
- Ideal for separating the oil from solid scraps and debris and expel it to be reused
- High performance turbine
- Stainless steel tank AISI 304
- Anti-skid wheels with brakes
- Reverse flow to recycle oil and liquids

Model	No. of Motors	Max Power (W)	Supply (V/Hz)	Suction (mmH ₂ O)	Air flow (m ³ /hr.)	Tank Capacity (Ltrs.)	Noise Level (dbA)
GS 2/62 H TC PN	2	2400	230/50	2470	420	62	74
GC 3/90 ECOMET	3	3500	230/50	2500	645	90	77
GS 3/78 OIL	3	3600	230/50	2470	630	78	76
PLANET OIL 3-PHASE	1	3000	400/50	2500	330	100	77

WHY CHOOSE ATEX VACUUM CLEANER FOR COMBUSTIBLE DUST ?

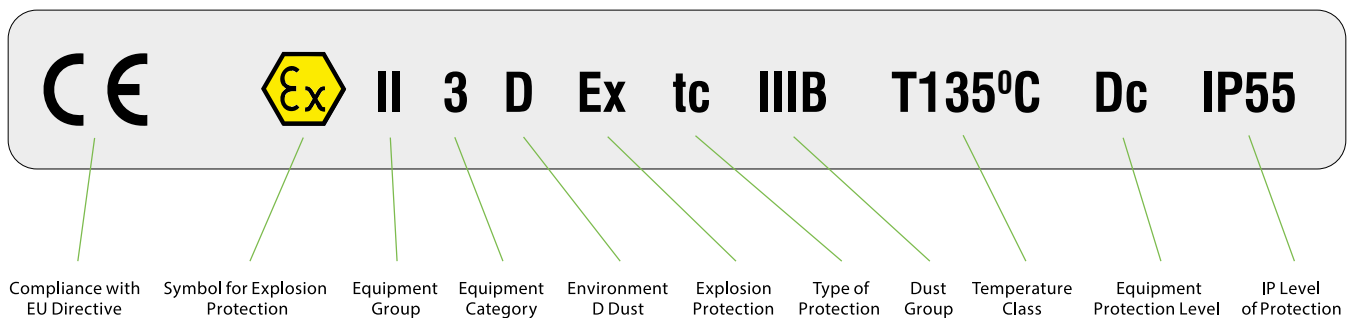
What does ATEX mean? **ATEX is an acronym for “Atmosphères Explosibles”**. The ATEX Directives and Standards are the reference of the European Community for **protection against the danger of explosion in the presence of flammable gases and/or dust**. What is an Ex area? **Ex areas**, according to IECEx definition, can be known by different names such as “Hazardous Locations”, “Hazardous Areas” “**Explosive Atmospheres**”, and the like and relate to areas **where flammable liquids, vapours, gases or combustible dusts are likely to occur in quantities sufficient to cause a fire or explosion**. The modern day automation of industry has meant an increased need to use equipment in Ex areas, namely **Ex equipment**.

Ex areas and Ex equipment are classified according ATEX Directive in relation to the presence of dust

PRESENCE OF DUST	ZONE	VACUUM CLEANERS
PERMANENT	ZONE 20	CATEGORY 1D
NORMAL	ZONE 21	CATEGORY 1D - CATEGORY 2D
ACCIDENTAL	ZONE 22	CATEGORY 1D - CATEGORY 2D - CATEGORY 3D

CATEGORY 1D - CATEGORY 2D - CATEGORY 3D (EXAMPLE OF CATEGORY 3 MARKING)

All ATEX certified products need to have an ATEX label explaining the criteria that it meets.



INTERNATIONAL STANDARDS, EU DIRECTIVES, LOCAL LEGISLATIONS, JWG

Where do you commonly find Ex equipment?
Ex equipment in such areas include:



- Automotive refuelling stations or petrol stations
- Oil refineries, rigs and processing plants
- **Chemical & Pharma processing plants**
- **Printing industries, paper and textiles**
- Hospital operating theatres
- Aircraft refuelling and hangars
- **Surface coating industries**
- Underground coalmines
- Sewerage treatment plants
- Gas pipelines and distribution centers
- **Grain handling and storage**
- **Food manufacturers**
- **Woodworking areas**
- **Sugar refineries**
- **Metal surface grinding, especially aluminium dusts and particles**

NOTE: AREAS **IN GREEN**: COMBUSTIBLE DUST PRESENCE TO PICK UP BY AN EX-PROOF VACUUM CLEANER

Industrial Vacuum Cleaners COMBUSTIBLE APPLICATIONS

PLANET 22 S ATEX



Features

- M & H filter classification, ESD compliance
- Multi-stage filtration, Static dissipating filters, PCB pre-filter & additional cartridge
- HEPA H13 cartridge filter
- Filter over-pressure indicators
- 2 stage motor
- Explosion proof turbine and design for ATEX zone 22
- Conductive wheels with brakes
- Conductive poly-liner bag with safety string

PLANET 300 S ATEX



Features

- Manual filter shaker, Static dissipating filters
- Conductive star shaped filter, PCB pre-filter and additional cartridge
- Industrial framework AISI 304, with detachable tank
- Tangential inlet and conveyor cone
- Vacuum relief valve and filtration level indicator
- Explosion proof turbine and design for ATEX zone 22
- Conductive wheels with brakes

PLANET 775 ATEX



Features

- Manual filter shaker
- Conductive star shaped filter, PCB pre-filter and additional cartridge
- Vacuum relief valve and filtration level indicator
- Industrial framework AISI 304, with detachable tank
- Tangential inlet and conveyor cone
- Explosion proof turbine and design for ATEX zone 22
- Conductive wheels with brakes

PLANET 300S PN ATEX



Features

- Manual filter shaker
- Filter over-pressure indicators
- PCB pre-filter and additional cartridge, static dissipating filters
- Explosion proof turbine and design for ATEX zone 22
- Reliable construction for intensive use, detachable tank and solid cart
- Tangential metal inlet
- Grounding system

Model	Usage	Motor Type	Max Power (W)	Supply (V/Hz)	Suction (mmH ₂ O)	Air flow (m ³ /hr.)	Protection (IP)	ATEX (Area)	Tank Capacity (Ltrs.)	Noise Level (dB)
PLANET 22 S ATEX	Dry	1-2 stage	1200	230/50	2470	210	6X	22	30	72
Planet 300S ATEX	Dry	1	3000	400/50	2500	304	55	22	100	76
PLANET 775 ATEX	Dry	1	7500	400/50	2700	700	55	22	100	76

Model	Usage	Air consumption (lpm)	Air pressure (bar)	Suction (mmH ₂ O)	Air flow (m ³ /hr.)	Protection (IP)	ATEX (Area)	Tank Capacity (Ltrs.)
PLANET 300S PN ATEX	Dry	700-1300	6	3300	330	55	22	100

Vacuum Cleaner Innovations

Flowmix

2 motors guarantee the same high performance of a standard 3 motor machine

More suction power with less energy

The FLOWMIX, is an IPC patented technology.

With **Flowmix system** the motors change from parallel to series connection, increasing water-lift performance by 60%.

Benefits

- **Flowmix system with 2 motors guarantees the same high performances of a standard 3 motor machine with a lower energy consumption.**
- **By using this technology you can reach and pick up liquids up to 3mtr in depth.**
- **Great performances when heavy material suction is required for long distances.**

- **New generation high performance motors.**
- **High efficiency and lower consumption.**
- **Anti-bacterial filter "Sanifilter"**



3Flow

Three motor vacuum cleaner featuring automatic cleaning of the filters during operation.

Vacuum cleaner with 3 motors, each one with their own independent filter. The machine works automatically and cyclically with 2 suction motors and 1 motor idling; **when this motor is not working, relevant filter undergoes a cleaning process.** Thanks to the motor operation cycles, all the filters get cleaned in turn allowing the vacuum cleaner to work continuously, without losing suction power.



ONE STEP AHEAD

ALL IN ONE VACUUM TO SPRAY



GP 2/62 EXT SPRAY

GP 1/27 EXT SPRAY

Our latest vacuum models, GP1/27 SPRAY EXT and GP 2/62 SPRAY EXT are specifically designed for heavy-duty cleaning, equipped with a special powerful pump to perform deep cleaning on hard floors and vertical surfaces, such as panels and windows. They can also be perfectly efficient on upholstery and car interiors etc. Their dedicated filtering system (that has been rated with the highest HEPA class) make them equally at ease both in wet & dry vacuuming modes.

Spraying mode

Spraying lance easily connected, available on 2 machines for both portable and heavy-duty uses.

Fully tested for using water solutions with either:

- **Hydrogen peroxide 0.5%**
- **Sodium hypochlorite 0.5%**
- **Quaternary salts 1.5%**

For professional use. Not for flammable or corrosive chemicals or detergents.

Special Application Vacuum Cleaners EFFICIENT HIGH FILTRATION SOLUTIONS

3FLOW PLAST



Features

- Specific for fine dust
- Continuous operation
- No loss of suction power
- 3 X Polyester cartridge filters (1 micron)
- 1000 working hours life

GS 1/33 H ISO5 ULPA

Ideal for clean room application



Features

- ISO5 classification for cleanroom
- Electro-medical compliance
- PCB pre-filter, microfiber bag
- 4 Stages of high filtration
- ULPA U15 filtration with aerosol cartridge leak test
- Downstream HEPA H14 cartridge
- Safety disposal system



GP 1/27 SPRAY EXT. HEPA

Ideal for cleaning and spray disinfection of surfaces



Features

- Exclusive built-in gasket: extremely durable against chemicals
- Sealant floater & integrated anti-foam system
- AP TUBE - aluminium/ plastic tube
- 2 stage motor with high performance
- DFS - dual filtration system for simultaneous dry and wet pick up
- Double layer cartridge polyester/ HEPA H14 for aerosol and particle filtration

WHITE R

Ideal for white room application



Features

- PCB pre-filter, microfiber bag
- 4 stage filtration
- Double cartridge filtration class M/H
- HEPA H14 cartridge
- ISO classification, Electro-medical compliance
- Safety disposal systems

Model	Application	No. of Motors	Max Power (W)	Supply (V/Hz)	Suction (mmH ₂ O)	Air flow (m ³ /hr.)	Tank Capacity (L)	Tank (Body Type)	Noise Level (dbA)
3FLOW PLAST	Dry	3	3000	220-240/50	2560	476	62	PP	68
GS 1/33 H ISO5 ULPA	Dry	1	1300	220-240/50	2870	210	33	SS	64
WHITE R	Dry	1	1000	220-240/50	2280	170	26	SS	64

Model	Application	Power (W)	Supply (V/Hz)	Suction (mmH ₂ O)	Air flow (m ³ /hr.)	Tank (L)	Detergent Tank (L)	Atomisation (micron)	Pump (watt-bar-lpm)
GP 1/27 SPRAY EXT HEPA	Dry / Wet	1200	220-240/50	2470	210	27	3	< 200	48-2-0.8



RDS
REVERSE
DRY SYSTEM *

SCRUBBER DRIERS

LI-ION BATTERY TECHNOLOGY

Always ready to use thanks to fast recharging.



LONG LIFE LI-ION BATTERY



BATTERIES AVAILABLE IN 2 VERSIONS:
36V 5,5 Ah - battery running time 50 min
36V 7,2 Ah - battery running time 75 min

BENEFITS

- 01 Dry mode in reverse with RDS system.
- 02 Handle can be adjusted during cleaning operation.
- 03 Extremely easy and intuitive system.

MODULAR SPRAYING SYSTEM 4 IN 1

NEW

ONE STEP AHEAD



1



SCRUB-DRY-SPRAY

Sprayer easily mounted on the back of the IPC scrubber drier, activated by the operator, directly from drive position.

2



SCRUB-DRY-SPRAY

Spraying lance can be used from the operator position.

3



TROLLEY SPRAY

Spraying tank and trolley can be easily detached from the scrubber and used manually.

4



BACKPACK SPRAY

Spraying tank that can be easily detached from the trolley and used as backpack sprayer

Easily Retrofittable On Ride-On Scrubber Driers: CT80, CT110, CT160 & CT230

		Kit Trolley + Pump EU	Kit CT80 BT 55 EU	Kit CT80 BT 60/70 EU	Kit CT110 All Models EU	Kit CT160 All Models EU	Kit CT230 All Models EU
Code		KTRI06204	KTRI06209	KTRI06216	KTRI06210	KTRI06211	KTRI06212
PERFORMANCE							
Cleaning path width	mm	850	850	850	850	1200	1200
Max theoretical productivity	m ² /hr.	2500	2500	2500	2500	3000	3000
Battery	V/Ah	12V - 8 Ah Lithium	12V - 8 Ah Lithium	12V - 8 Ah Lithium	12V - 8 Ah Lithium	12V - 8 Ah Lithium	12V - 8 Ah Lithium
Battery Charger	V/Hz	100/240 VAC - 2.5 Ah	100/240 VAC - 2.5 Ah	100/240 VAC - 2.5 Ah	100/240 VAC - 2.5 Ah	100/240 VAC - 2.5 Ah	100/240 VAC - 2.5 Ah
Tank capacity	l	15	15	15	15	15	15
Weight Trolley + Empty Pump	Kg	11.2	11.2	11.2	11.2	11.2	11.2
Weight Empty Pump	Kg	4.3	4.3	4.3	4.3	4.3	4.3
Working pressure	Bar	from 0.5 to 5	from 0.5 to 5	from 0.5 to 5	from 0.5 to 5	from 0.5 to 5	from 0.5 to 5

Single Discs - Scrubber & Burnisher

SD 13/175 SC



Features

- Light weight, long life
- Low height motor design
- Quick transportation thanks to large wheels
- Solution distribution from brush centre
- Powerful motor with planetary gear
- Ideal for cleaning medium to small areas

SD 17/154 SC



Features

- Large capacity solution tank
- Low height motor design
- Heavy duty motor and body
- Quick transportation thanks to large wheels
- Solution distribution from brush centre
- Powerful motor with reduction gear

SD 17/400



Features

- Quick transportation thanks to large wheels
- Heavy duty motor with planetary gear
- Ideal for sectors such as hotels, restaurants and offices buffing applications
- Maintenance free machine

SD 1500 HS



Features

- Designed for professionals and cleaning operators
- Ideal for polishing floors
- Ergonomic handle
- Optional pads available for buffing applications in industry, construction sites and offices

Model	Working Width (mm)	Motor Rating (W)	Operating Speed (RPM)	Under-Ride Height (mm)	Solution Tank (Ltrs.)	Main Supply (V/H ₂)	Cable Length (M)	Machine Weight (Kg)
SD 13/175 SC	330	750	175	265	12	220-240/50	12	27
SD 17/154 SC	430	1100	154	-	12	220-240/50	12	48
SD 17/400	430	1600	400	330	*	220-240/50	15	45
SD 1500 HS	505	1300	1500	-	-	220-240/50	14	44

* Optional 12 litre tank

Scrubber Driers **WALK-BEHIND**

CT5



Features

- Ideal for cleaning small areas
- Forward & reverse drying
- Fast battery recharge
- Long battery life means low maintenance costs

CT15



Features

- Solution distribution from brush centre.
- CWS (constant weight system).
- Exclusive squeegee system assures high performance at low cost.

CT30



Features

- Brush replacement without tools squeegee blade can be used on 4 sides before replacement.
- AFS (Anti- Foam System).

CT40



Features

- Solution distribution from brush centre
- CWS (constant weight system)
- Exclusive squeegee system assures high performance at low cost
- Brush replacement without tools squeegee blade can be used on 4 sides before replacement
- SLS (self levelling system)
- AFS (Anti- Foam System)
- Battery level indicator (Battery Version)

CT55



Model	Scrubbing Width (mm)	Suction Width (mm)	Productivity (M ² /Hr.)	Number of disc brushes	Solution Tank Capacity (Ltrs.)	Recovery Tank Capacity (Ltrs.)	Power Supply	Maximum speed (Km/Hr.)	Weight (Kg)	Dimensions (LxWxH) (mm)
CT5 B28	280	300	900	1	5	5	36V, 5.5Ah	3	19.8	758x376x392
CT15 B35	350	450	1225	1	16	19	24V (2x12V), 29Ah	3.5	59	960x550x1220
CT15 C35	350	450	1225	1	16	19	220-240V/50Hz	3.5	37.5	960x550x1220
CT30 B45	450	710	1575	1	28	30	24V (2x12V), 74Ah	3.5	98	960x550x1220
CT30 C45	450	710	1575	1	28	30	220-240V/50Hz	3.5	53	960x550x1220
CT40 B50	500	815	1750	1	40	50	24V (2x12V)x105Ah	3.5	123	1230x516x960
CT40 C45	450	815	1575	1	40	50	220-240V/50Hz	3.5	83	1230x516x960
CT55 B55	550	815	1925	1	55	60	24V(2x12V)x105Ah	3.5	131	1190x685x1018
CT55 C55	550	815	1925	1	55	60	220-240V/50Hz	3.5	91	1190x640x1018

Scrubber Driers **RIDE-ON**

CT 80



Features

- Solution distribution from brush centre avoids solution wastes
- Self-levelling electronic system for an always perfect adherence between brush and floor
- Squeegee designed for the highest drying and productivity results
- Easy to use, thanks to intuitive commands
- Deactivation and re-start of working function simply with a command on pedal
Includes brush and suction delayed stop for irregular working stages
- Brush, blades and suction hose replacement without tools

CT 110



Features

- Huge tank capacity in minimum external space
- High quality and performance vacuum motor
- Brush replacement without tools
- Inlet and outlet filters for solution tank protection
- Squeegee designed to absorb harsh impact
- 3 solution distribution options: standard, automatic & economy

CT 160 / CT 230



Features

- Huge solution tank capacity in minimum external space
- Extensive running time
- High quality and performance vacuum motor
- Great visibility whilst working
- Easy access to internal compartment
- Inlet and outlet filters for solution tank protection
- Brush replacement without tools
- Squeegee designed to absorb harsh impact
- Great manoeuvrability thanks to an optimum weight distribution
- Automatic squeegee lift in reverse

Optional on models - CT80, CT110, CT160 & CT230

 Telematics GPS - geolocation of your machines

 Modular spraying system - 4 in 1

Model	Scrubbing Width (mm)	Suction Width (mm)	Productivity (M ² /Hr.)	Number of disc brushes	Solution Tank (Ltrs.)	Recovery Tank (Ltrs.)	Power Supply	Max. speed (Km/Hr)	Weight (Kg)	Dimensions (LxWxH) (mm)
CT80 BT55	550	710	3180	1	80	83	24V(2X12V) 105Ah	6	204	1310x673x1030
CT110 BT85	850	1010	5525	2	110	115	24V(4x6V) 180Ah	6.5	231	1504x909x1201
CT160 BT95	950	1100	5700	2	145	170	36V(6x6V) 240Ah	6	292	1720x1100x1360
CT230 BT105	1050	1280	9450	2	205	225	36V(6x6V) 320Ah	9	378	1950x1155x1466

Scrubber Driers **RIDE-ON**

CT 160 R Sweep (Roller Brush)



Features

- Huge solution tank capacity in minimum external space
- Extensive running time
- Pre-set working programs
- With pre-sweep system
- Separate detergent dosing system
- Inlet and outlet filters for solution tank protection
- Brush replacement without tools
- Squeegee designed for the highest drying and productivity results
- Brushes, blades and suction hose replacement without tools
- Automatic squeegee lift in reverse

Roller Version



Sweeper Version



CT 230 R Sweep (Roller Brush)



Features

- Huge solution tank capacity in minimum external space
- Extensive running time
- Pre-set working programs
- With pre-sweep system
- Separate detergent dosing system
- Anti-foam system with special electro-mechanical suction motor protection
- Brush replacement without tools
- Squeegee designed for the highest drying and productivity results
- Brushes, blades and suction hose replacement without tools
- Automatic squeegee lift in reverse

Sweeper Version



Optional on models - CT80, CT110, CT160 & CT230

- 📍 Telematics GPS - geolocation of your machines
- 🚰 Modular spraying system - 4 in 1

Model	Scrubbing Width (mm)	Suction Width (mm)	Productivity (M ² /hr.)	No. of brushes	Solution tank (Ltrs.)	Recovery tank (Ltrs.)	Power Supply	Max. speed (Km/hr.)	Weight (Kg)	Dimensions (LxWxH) (mm)
CT160 BT75R Sweep	750	1010	4500	2 (Cyl)	145	170	36V(6x6V) 240Ah	6	300	1810x1050x1360
CT230 BT100R Sweep	1000	1280	9000	2 (Cyl)	205	225	36V(6x6V) 320Ah	9	378	1950x1170x1466

SWEEPERS

ESPECIALLY STUDIED AGAINST DUST

ROBUST AND RELIABLE, THE SWEEPERS RANGE DESIGNED FOR INDUSTRIES.

Suitable for all dusty environments.

Large hopper, high power, exceptional sweeping, vacuuming performance.

An advanced filter for better results in a shorter time and at reduced costs.

Direct load sweeping system, Water cooled engines, Power steering.

Little maintenance required as all functions are hydraulically activated.

LIQUID-COOLED ENGINES

The liquid-cooling system of IPC machines guarantees long work shifts and applications in hot climates.



Suitable for
locations with high
temperatures



Long work shifts

Sweepers **WALK-BEHIND**

M510 C

Features

- Main brush designed to collect debris forward
- Debris hopper of great capacity, easily removable for manual discharge operations
- Adjustable handle
- Easy access to all components



464 / 664

Features

- Extensive filtering surface
- On-board battery charger
- Dust filter and main brush replacement without tools
- Easy to transport
- Adjustable handle
- Rubber impact absorbing bumpers
- Fully coated steel heavy duty chassis



505



Features

- Great productivity
- Ergonomics, user friendly
- Low maintenance costs
- Robust construction
- High performance

705



512 (Battery / Petrol)



Features

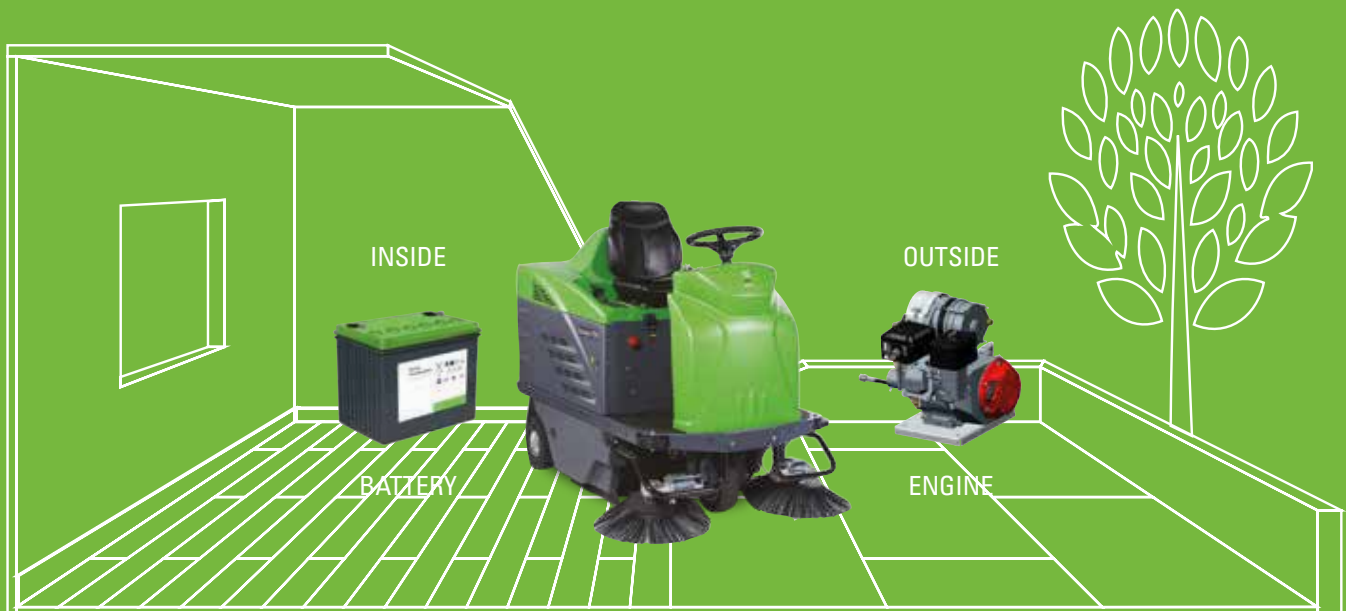
- Huge hopper capacity
- Extensive filtering surface
- Extensive running time
- Main brush pressure adjustment
- Dust flap for large debris collection
- Battery level indicator
- Parking brake
- Designed to ensure minimum noise level
- Filter shaker

712 (Battery / Petrol)

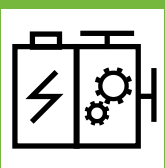


Model	Max Working Width	Main Brush Width	Productivity (M ² /hr.)	Hopper Capacity (Ltrs.)	Power Supply	Filter Surface (m ²)	Max Speed (Km/hr)	Weight (Kg)	Dimensions (LxWxH) (mm)
M510 C	670	490	2345	40	Manual	-	3.5	24	1300x920x920
464	625	460	2187	35	Battery 12 V 42Ah	1	3.5	38	1033x615x994
664	825	600	2600	45	Battery 12 V 42Ah	1	3.5	41	1033x815x994
505 ET	700	500	2450	35	Battery 12 V 60Ah	1.25	3.5	78	1160x810x1000
705 ET	900	700	3150	65	Battery 12 V 60Ah	3	3.5	75	1160x810x1000
512 ET	700	500	2450	50	Battery 12 V 105Ah	1.9	3.5	78	1225x753x903
512 ST	700	500	2450	50	Petrol Honda 4HP	1.9	3.5	111	1225x753x903
712 ET	900	700	3150	65	Battery 2x12V 105 Ah	2.9	3.5	93	1225x943x903
712 ST	900	700	3150	65	Petrol Honda 4HP	2.9	3.5	126	1225x943x903

HYBRID FOR INTERNAL & EXTERNAL CLEANING



INNOVATION



DUAL POWER

DETAILS

Very low exhaust emissions in full respect of the environment

Maximum noise reduction thanks to battery mode

Significant savings of fuel consumption

MACHINES

· 1050

· 1250

· 1280

· 1404

Sweepers RIDE-ON

1050



1250/1280



1404



Features

- Main brush with special “V” shape, allows maximum performances of debris collection
- Huge hopper capacity
- Large sweeping path
- SLS (Self Levelling System) automatic main brush pressure control
- Filter shaker with automatic option. Intervals can be programmed through electronic board
- Protected and waterproof controls
- Model 1280 & 1404 come equipped with hydraulic dumping system

Model	Max Working Width	Main Brush Width	Productivity (M ² /hr.)	Hopper Capacity (Ltrs.)	Max Dumping Height (mm)	Power Supply	Filter Surface (m ²)	Max Speed (Km/hr)	Weight (Kg)	Dimensions (LxWxH) (mm)
1050 E	1050	650	6300	70	-	24V (4x6V)≈180Ah	3.8	6	253	1400x816x1142
1050 DP-P	1050	650	6300	70	-	Honda 5 HP-24V	3.8	6	230	1400x816x1142
1250 E	1200	680	7440	67	-	24V (4x6V)≈180Ah	3.3	6.2	358	1615x905x1210
1250 P	1150	680	7130	67	-	Honda motor 4.5 HP	3.3	6.2	288	1615x905x1210
1280 E	1200	680	7440	67	1420	24V (4x6V)≈180Ah	1.8	6.2	416	1615x905x1210
1280 D	1150	680	7130	67	1420	Yanmar motor 4.7 HP	1.8	6.2	444	1615x905x1210
1404 DP-P	1450	800	9425	150	1430	24V-Honda Motor 6.5HP	6	6.5	512	1600x1080x1280
1404 E	1450	800	9425	150	1430	24V(4x6)≈240Ah	6	6.5	585	1600x1080x1280

INDUSTRIAL SWEEPERS - APPLICATION FIELDS

Industrial sweepers range has been specifically created for applications in any type of dusty areas. These machines can collect any type of debris and guarantee a complete control of particulates.



FOUNDRIES



CEMENT PLANTS



LOGISTICS PLATFORMS



CAR PARKS



PUBLIC AREAS

Sweepers RIDE-ON

MEDIUM AREAS- UP TO 10,000 m²/hr.

155



165



BIG AREAS- UP TO 20,000 m²/hr.

195



Features

- Large sweeping path
- Extensive filtering surface with shaking system for effective daily cleaning
- Improved driving system thanks to a back wheel, facilitates good manoeuvrability in industrial areas
- Pleated fabric filter with special panels and powerful suction fan
- Can be equipped with special filters to control particulates PM10, PM5 and PM2.5
- Hydraulic power steering & dumping
- Closed hydraulic circuits on both traction and sweeping system
- Short distance between brush & hopper ensures great collection of heavy debris and particulates

Model	Working Width (2 side brushes)	Working Width (1 side brush)	Working Width (main brush)	Productivity (M ² /hr.) 2 side brushes	Hopper Capacity (Ltrs.)	Max dumping height	Power Supply	Filter Surface (m ²)	Max Speed (Km/hr)	Dimensions (LxWxH) (mm)
155 B	1440	1140	750	10080	220	1325	36 V 320 Ah	6	7	1990x1230x1380
155 D	1440	1140	750	10080	220	1325	Lombardini 12.5 kW	6	7	1990x1230x1380
165 B	1600	1250	900	11200	340	1350	36 V 320 Ah	6	7	2220x1350x1455
165 D	1600	1250	900	11200	340	1350	Lombardini 12.5 kW	6	7	2220x1350x1455
195 B	1800	1500	1200	14400	450	1500	48 V 620 Ah	10	8	2500x1560x1540
195 D	1800	1500	1200	18000	450	1500	KUBOTA 25 kW	10	10	2500x1560x1540



IPC
PUMP

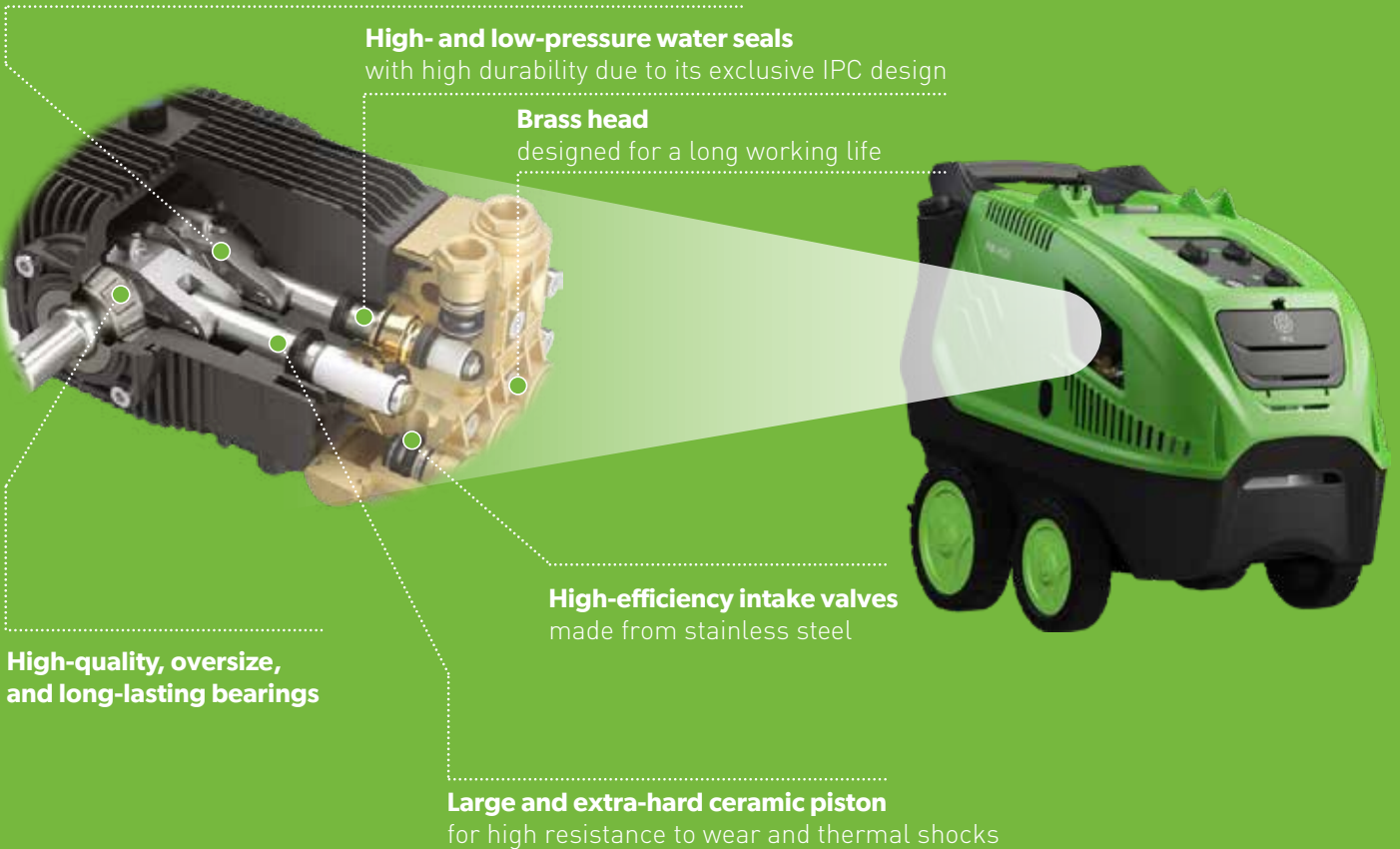
LONG WORKING LIFE

RELIABLE AND EFFICIENT.

The exclusive and highly reliable IPC's plunger pumps have passed the 2000 hours working time test, carried out in real heavy-duty working conditions, 8 hours/day.

Reinforced connecting rod

in a special alloy or bronze (depending on the model)



High- and low-pressure water seals

with high durability due to its exclusive IPC design

Brass head

designed for a long working life

High-efficiency intake valves

made from stainless steel

High-quality, oversize,
and long-lasting bearings

Large and extra-hard ceramic piston

for high resistance to wear and thermal shocks

IPC pressure washers nomenclature allows an easy and fast identification of the main technical features of each model.

Following an example on PW-H50 D1310P M pressure washer:

PRESSURE WASHERS		PLATFORM		MPA PRESSURE		PUMP TYPE		
PW	-	H	50	D	13	10	P	M
		H = HOT WATER PRESSURE WASHER C = COLD WATER PRESSURE WASHER		CONTROL SYSTEM: - = BY PASS I = IMMEDIATE TOTAL STOP D = DELAYED TOTAL STOP S = SAFETY STOP		FLOW RATE l/min		POWER M = SINGLE-PHASE T = THREE-PHASE

High Pressure Washers **COLD WATER**

PW-C22



Features

- Immediate total stop (the machine goes off automatically when the trigger gun is released)
- Axial pump with aluminium alloy head
- Stainless steel pistons with excellent mechanical characteristics

PW-C23



Features

- Immediate total stop (the machines goes off automatically when trigger gun is released)
- Axial pump with aluminium alloy head
- Stainless steel pistons with excellent mechanical characteristics

PW-C25



Features

- Asynchronous motor, 2-pole (2800rpm), class S1 (continuous Duty)
- Professional pressure gauge to monitor work pressure at all times
- Strong structure that is resistant to thermal shocks, atmospheric agents and chemical corrosion

MLC Wall Mounted Unit



Features

- Asynchronous motor 4-pole, class S1
- Sturdy frame and large diameter

PW-C09



Features

- Axial pump with aluminium alloy head
- Stainless steel pistons
- Universal motor

PW-C21



Features

- Plunger pump with brass head and ceramic pistons
- Adjustable pressure as equipped with pressure gauge
- Wall support kit, hose reel and trolley kit (optional accessories)

Model	Remote Control	Pressure (bar)	Flow Rate (l/h)	Voltage (Ph-V-Hz)	Absorbed Power (kW)	Detergent Tank (Ltrs.)	Electric Cable (M)	Hose (M)	Weight (Kg)	Dimensions (cm)
PW-C09 I1207A M	Total Stop I	120	380	1-230-50	1.8	0.5	5	6	10	26x25x78
PW-C21 I1508P M	Total stop I	150	480	1-230-50	2.5	-	5	8	16.8	46x28x26
PW-C21 I1609P M	Total stop I	160	540	1-230-50	2.9	-	5	8	18.4	46x28x26
PW-C22P I1609AO M	Total Stop I	160	540	1-230-50	3	4	5	8	25	35x33x87
PW-C23P I1610AO M	Total Stop I	160	600	1-230-50	3	2x0.6	5	12	25	38x33x84
PW-C25 I1310P4 M	Total Stop I	130	600	1-230-50	2.7	3	5	8	35	49x40x93
PW-C25 I1813P T	Total Stop I	180	800	3-400-50	4.7	3	5	8	35	49x40x93
MLC C-D-1915 P4T	Total stop D	190	900	3-400-50	5.1	7.5	5	10	45	53x36x60

Industrial High Pressure Washers **COLD WATER**

PW-C45 & PW-C55



Features

- Asynchronous motor, 2-pole & 4-pole, class S1 (continuous duty)
- Large wheel base, easily movable even on unpaved/uneven floors
- Collapsible handle, storage space for all equipment, removable cover & easy oil-fill-empty-system

PW-C85



Features

- Asynchronous motor, continuous duty, 1400 rpm. Guarantees the mechanical components a long and maintenance free working life
- Protected with thermal cut-out
- Sturdy painted steel frame for protection

ABSOLUTE

Features

- Remote control “safety-stop” (ST) shuts the machine down after 3’ of inactivity or definitively in the event of leaks in the water circuit and / or no water
- The pump and motor are easy to disconnect
- Sturdy painted steel frame for protection



BENZ

Features

- 280 mm diameter wheels
- Thermostatic valve
- H.P crankshaft pump with brass head and ceramic pistons
- Grab bar and tubular steel bumper with rests for the lance and gun



Model	Remote Control	Pressure (bar)	Flow Rate (l/h)	Voltage (Ph-V-Hz)	Absorbed Power (kW)	RPM	Weight (Kg)	Dimensions (cm)
PW-C45 D1310P4 M	Delayed Total Stop	130	600	1-230-50	2.9	1400	40	67x42x95
PW-C45 D1814P4 T	Delayed Total Stop	180	840	3-400-50	4.6	1400	44	67x42x95
PW C-55 D2117P T	Delayed Total Stop	210	1000	3-400-50	6.4	1400	61	88x48x104
PW C-55 D2515P T	Delayed Total Stop	250	900	3-400-50	7.5	1400	69	88x48x104
PW C-85 D3515P4 T	Delayed Total Stop	350	900	3-400-50	12.3	1400	115	78x59x90
Absolute-C S3521P T	Safety Stop ST	350	1300	3-400-50	17.5	1400	182	120x70x100
Absolute-C S5022P T	Safety Stop ST	500	1320	3-400-50	22	1400	220	120x70x100
Benz-C H1811Pi P	By-Pass	180	660	GX 200 Honda	4.85	3600	47	86x56x54
Benz-C H2013Pi P	By-Pass	200	800	GX 270 Honda	6.70	3600	70	105x66x75
Benz-C H2515Pi P	By-Pass	250	900	GX 390 Honda	9.70	3600	75	105x66x75

High Pressure Washers **HOT & COLD WATER**

PW H28



PW H50



PW H100



*MODELS ALSO AVAILABLE IN SS BODY

Features

- Large diameter wheels in order to facilitate movements
- Machine equipped with temperature stabilizer and micro-leakage control
- Pressure adjustment and steam knob, allowing pressure to be adapted to various cleaning situations
- Accessory storage compartment
- Crankshaft pump with brass head and ceramic pistons
- Sturdy and large tank in rotomoulded plastic material

Features

- Electric motor, 4-pole, 1400 rpm, continuous duty with double bearing and thermal cutout
- Delayed total stop
- Intelligent automatic switch off
- Micro leakage control
- Dry running protection
- Lance nozzle clogged control
- Ignition boiler delay
- Working hours counter
- Temperature stabilizer
- Lime-scale / corrosion protection unit

Features

- Electric motor, 4-pole, 1400 rpm, continuous duty with double bearing and thermal cutout
- Delayed total stop
- Intelligent automatic switch off
- Micro leakage control
- Dry running protection
- Lance nozzle clogged control
- Ignition boiler delay
- Working hours counter
- Electronic temperature stabilizer
- Lime-scale / corrosion protection unit
- Fuel level control
- Infrared flame control

Model	Remote Control	Pressure (bar)	Flow Rate (l/h)	Voltage (Ph-V-Hz)	Absorbed Power (kW)	Fuel (Ltrs.)	RPM	Temp. Range (°C)	Detergent Tank (Ltrs.)	Weight (Kg)	Dimensions (cm)
PW-H28 D1309P M	Delayed Total Stop	40-130	540	1-230-50	2.5	18	2800	30-130	2.5*	80	82x63x87
PW-H28 D1713P T	Delayed Total Stop	40-170	800	3-400-50	4.7	18	2800	30-130	2.5*	90	82x63x87
PW-H50 D1915P4 T	Delayed Total Stop	30-190	900	3-400-50	5	25	1400	30-140	22	122	110x70x90
PW-H50 D2017P4 T	Delayed Total Stop	30-200	1000	3-400-50	6.4	25	1400	30-140	22	140	110x70x90
PW-H100/4 D2515P T	Delayed Total Stop	30-250	900	3-400-50	7.7	25	1400	30-140	22	172	110x70x90
PW-H100/4 D2021P T	Delayed Total Stop	30-200	1300	3-400-50	8.5	25	1400	30-140	22	172	110x70x90

*Optional

Industrial High Pressure Washers **HOT WATER (ELECTRIC BOILER)**

PW-E100 (PP COVER)

PW-E100 (SS COVER)



WITHOUT EXHAUST GAS

- Greater efficiency without use of fuel
- 3 phase models for industrial use
- Detergent delivery in high pressure mode



MSC™
MULTIFUNCTION
SAFETY
CONTROLS

DELAYED TOTAL STOP (DTS)	Stops the machine after 30" from the trigger gun closing.
INTELLIGENT AUTOMATIC SWITCH OFF (IASF)	Switches off the machine after 20 minutes of no-use.
INTELLIGENT PROPORTIONAL SWITCH OFF (IPSF)	Automatic stop of the machine after a period of inactivity, which varies according to how long the machine has been used.
MICRO LEAKAGE CONTROL (MLC)	Stops the machine in case of dangerous leakage in the HP hydraulic circuit.
DRY RUNNING PROTECTION (DRP)	Stops the machine in case of lack of water.
LANCE NOZZLE CLOGGED CONTROL (NCC)	Stops the machine when the nozzle is clogged.
WORKING HOURS COUNTER (WHC)	Electronic hours counter indicating the working hours of the machine.
MAINTENANCE CHECK LED (MCL)	Control device to alert when maintenance is required.
LIMESCALE/CORROSION PROTECTION UNIT (LCPU)	Protects the hot water machine from limescale deposits and corrosion.
INTELLIGENT BOILER TEMPERATURE SETTING SYSTEMS (ITSS)	An extremely accurate electronic control device that ensures constant water temperature.
CHEMICAL LEVEL CONTROL (CLC)	Detects and reports the lack of fuel.
ANTI-SCALE LEVEL CONTROL (ALC)	Detects and reports the lack of descaler and stops the machine burner to prevent limescale deposits.
FLOODING PREVENTION SYSTEM (FPS)	Stops the machine after 60 minutes of continuous activity.



Large non-marking rubber wheels improve manoeuvrability.



22l detergent tank and 25l anti-scale tank.



3 stage high efficiency boiler with AISI 316 stainless steel structure.



Large non-marking rubber wheels improve manoeuvrability.



Stainless steel cover



Handle and tanks in rotomoulded plastic material

Model	Remote Control	Pressure (bar)	Flow Rate (l/h)	Boiler Thermal Power (kW)	Absorbed Power (kW)	Motor (RPM)	Outlet Water Temp (°C)	Anti-Scale Tank (Ltrs.)	Detergent Tank (Ltrs.)	Weight (Kg) PP/SS	Dimensions (cm)
PW-E100 D1712 P24T	Delayed Total Stop	170	720	24	29	1400	70	25	22	113/130	110x70x90

member of **IPC**

GREEN JET WEED REMOVAL

Green Jet is IPC's technology that uses hot water to remove weeds in an effective and ecologically sustainable way, avoiding contamination of the subsoil.

Green Jet has a low environmental impact because it does not use chemicals, consumes only 10 ltrs. of water per minute and can be supplied directly from the water mains or from external tanks.

It guarantees excellent visible results after a few days from the first intervention and ensures the final weed removal starting from the second year.

Specifically recommended for urban areas and green sectors.



Special applications - cleaning, washing and weed control with one machine

Features

- Delayed total stop - DTS
- Intelligent automatic switch off - IASF
- Dry running protection - DRP
- Limescale/corrosion protection unit - LCPU
- Antiscale level control - ALC
- Infrared flame control system - FCS
- Maintenance check led - MCL
- Self-priming, high performance volumetric rotary vane pump

INNOVATIONS



SPECS



STANDARD LIFTING HOOK TO BE RAISED AND TRANSPORTED ANYWHERE



DIRECT WATER SUPPLY OR SUCTION WITH EXTERNAL TANK



CONTROL PANEL SHOWING: ON/OFF SWITCH, NETWORK INDICATOR LIGHT, FLAME CONTROL LIGHT, WARMING LACK OF ANTISCALE, SERVICE WARNING LIGHT (150 HRS), READY WARNING LIGHT (TEMPERATURE REACHED)

Model	Remote Control	Pressure (bar)	Flow Rate (l/h)	Voltage (Ph-V-Hz)	Absorbed Power (Kw)	Fuel (Ltrs.)	Outlet water Temp. Max (°C)	Anti-scale Tank (Ltrs.)	Weight (Kg)	Dimensions (cm)
GREEN JET 1010 M	Delayed Total Stop	8	600	1-230-50	0.8	18	100	2	142	83x109x100
GREEN JET 7510 M	Delayed Total Stop	75	600	1-230-50	1.9	18	100	2	142	83x109x100

Pure Water Cleaning System

GREEN TUBE



Features

- Great ability to attract and dissolve dirt
- Maximum effect on treated surfaces
- No need of chemicals
- Extremely easy to use and carry
- No need to dry the surface after washing operations
- No need of ladders, scaffolding or elevated platforms
- Thanks to the extensible poles* with lengths up to 16 meters, it is possible to easily clean facades and vertical surfaces without any risk for the operator.

* Optional accessories



HIGH PURE



Features

- Great ability to attract and dissolve dirt
- Maximum effect on treated surfaces
- No need of chemicals
- Extremely easy to use and carry
- No need to dry the surface after washing operations
- No need of ladders, scaffolding or elevated platforms
- Thanks to the extensible poles* with lengths up to 16 meters, it is possible to easily clean facades and vertical surfaces without any risk for the operator.

* Optional accessories



Standard Accessories

CODE: FTAC40002
REVERSE OSMOSIS
MEMBRANE



CODE: KTRI40147
FILTER KIT: 1PCS SEDIMENTATION,
1PCS ACTIVE CARBON, 1PCS
DEIONIZING RESIN CARTRIDGE



CODE: PRCH400034
POWDER FOR
OSMOTIC MEMBRANE
FILTER MAINTENANCE



CODE: TBBP40079
DRAINAGE TUBE



CODE: TBFX40008
15 m FLEXIBLE HOSE
WITH FITTINGS



CODE: AZMC40006
HAND-HELD TDS
METER



CODE: CNPR40007
GASKET LUBRICANT



Standard Accessories

CODE: FTAC40002
REVERSE OSMOSIS
MEMBRANE



CODE: KTRI40106
FILTER KIT: 1PCS SEDIMENTATION,
1PCS ACTIVE CARBON, 1PCS
DEIONIZING RESIN CARTRIDGE



CODE: PRCH400034
POWDER FOR
OSMOTIC MEMBRANE
FILTER MAINTENANCE



CODE: TBBP40010
DRAINAGE TUBE



CODE: TBFX40009
30 m FLEXIBLE HOSE
WITH FITTINGS



CODE: AZMC40006
HAND-HELD TDS
METER



CODE: VVSF40018
FLOW CONTROL VALVE



CODE: CNPR40007
GASKET LUBRICANT



Model	Pressure (bar)	Pure Water Flow (l/m)	Water in/out connections (Gas)	Max poles length (m)	Productivity (M ² /hr.)	Power supply (Ph-V-HZ)	Absorbed power (kW)	Weight (Kg)	Dimensions (cm)
GREEN TUBE (APTA40009)	~8	2-4	3/4"	15	Upto 100	1-230-50	0.3	26	33x41x145
HIGH PURE (APTA40016)	~5	2-5	3/4"	16	Upto 200	12V-DC		50	53x50x127

Steam Generators

SG-10



Features

- Handle for convenient transportation
- Stainless steel structure suitable for areas where hygiene is a must
- Digital indicator of :
Boiler temperature, Steam ready, Water lack
- Boiler with auto-filling tank for continuous use
- Safety feature as the machine is fitted with automatic shut down feature

SG-20/30



Features

- It can work as a vacuum and steam cleaner with suction & injector feature
- Anti-bugs system
- Power suction system: wet & dry filtering system
- Water tank: integrated in the boiler

SG-45



Features

- Anti-bugs system
- Power filter
- Automatic shut down
- Power boiler
- Steam flow rate controller
- Non-marking wheels
- Soft touch panel

BENEFITS OF STEAM CLEANING

Cleaning action

Great penetration ability
It reaches deeply any area to clean

Degreasing action

- It melts the dirt very quickly
- It makes easy to remove the hardest dirt like grease and oil

Decontaminating action

- It eliminates the contaminating effects of biological and chemical substances

Sanitizing and disinfecting action

- The thermal shock created by the steam reduces drastically the microbic charge
- No need of special products like chemicals

Suction action (SG-20/30)

- Safe collection of what has been removed (solid and liquid) like dirt
- Suction system also independent from steam use



Model	Boiler Volume (Ltrs.)	Working Pressure (bar)	Steam Temperature (°C)	Steam Flow Rate (g/min)	Absorbed Power (kW)	Power Supply (Ph-V-HZ)	Water Tank Capacity	Dimensions (LxWxH) (cm)	Weight (Kg)
SG-10 S 6008 M	1.8	6.0	165	max 80	3.2	1-230-50	2.5*	45x28x31	8
SG-20 S 5008	2.2	5.0	140	max 80	3	1-230-50	2.0**	57x40x65	16
SG 30 S5510 M	2.2	5.5	140	100	3	1-230-50	2.0*	57x40x65	18
SG 45 5008 M	3	5	140	160	2.9	1-230-50	7	66x43x67	20

* Auto filling

** Detergent tank

Steam Generators

SG 50



SG 55



SG-70



Features

- Stainless steel structure, suitable for areas where hygiene is a must
- Control panel with micro- touch buttons for a quick and constant check of machine main functions.
- Rotary knob for steam quantity control
- Automatic shutdown
- Fixed 'Steam-only' station module
- 'Steam-only' module can be placed on trolley to facilitate manoeuvrability and transport*
- Trolley module also available with vacuum cleaner for combo 'steam+suction' applications*
*Vacuum & Trolley optional

Features

- Sturdy stainless steel structure
- Handle for easy transportation
- High performance IPC boiler
- Equipped with external stainless steel vacuum cleaner
- **Control panel features:**
 - Main switch
 - Pressure gauge
 - Boiler temperature digital indicator
 - Steam ready indicator light
 - Detergent lack indicator light
 - Power supply indicator light
 - Steam output regulator
 - Boiler switch
 - Detergent switch

Features

- Stainless steel structure, suitable for areas where hygiene is a must
- Extra large stainless steel boiler AISI 304
- Rotary knobs for steam, chemical and cold water quantity control
- Self-filling magnetic system
- Unlimited working time with 50 litre water tank
- Dismountable anti-corrosion water heaters
- Enhanced autonomy with connection to the water tank
- Accessory storage area
- Ideal for cleaning hard and soft floors, carpets and machineries
- Suitable for industry, food processing plants and transports

Model	Boiler Volume (Ltrs.)	Working Pressure (bar)	Steam Temperature (°C)	Steam Flow Rate (g/min)	Absorbed Power (kW)	Power Supply (Ph-V-HZ)	Water Tank Capacity	Dimensions (LxWxH) (cm)	Weight (Kg)
SG 50 S 5008 M	4	2.5-5	160	80	2.9	1-230-50	6	109x40x107	45
SG 50 S 5010 M	4	2.5-5	160	100	3.5	1-230-50	6	109x40x107	45
SG 55 8025 T	4.2	8	180	250	10.4	3-400-50	15	80x55x102	47
SG 70 9536 T	16	9	180	330	11.4	3-400-50	50	115x65x100	167

READY SYSTEM

EUROMOP™

PULEX™

member of **IPC**

member of **IPC**

member of **IPC**



Double mop bucket
30 Ltrs.



Polypropylene double section
bucket trolley CLEVY 30



BIS double bucket trolley
50 Ltrs.



Polypropylene multi-purpose
service trolley STAR ACE 111



BRIX Collection Trolley



BRIX School Trolley



Polypropylene
No-Touch Frame



Aluminium holder
with Velcro and
universal joint



Joint split sweeper
frame with plate and
joint in plastic



Olympic / one
frame



Pad holder



Stainless steel
window squeegee



Window
washer T-bar



Microfiber kentucky
mop with band



Loop microfiber
No-touch mop
replacement



Spot microfiber No-touch
mop replacement



V sweeper
complete



V sweeper mop
replacement



CLEANO indoor glass
cleaning tool with
telescopic handle



Lobby dust pan
with broom



Telescopic poles



Wet floor sign

READY SYSTEM

EUROMOP™

PULEX™

member of **IPC**

member of **IPC**

member of **IPC**



Flat mop trolley JT215R / SME 100



Janitorial Trolley / JTC 151



Janitorial Trolley / JTC 150



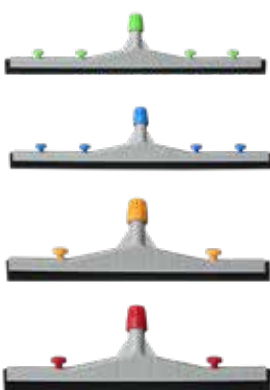
Janitorial Trolley / JT 61



Mini Cleaning Trolley / JT D15/JTD25



Wringer Trolley / DB30/DB50



Floor Squeegee



Microfiber Kentucky Mop Set



Lobby dustpan with broom



Window Cleaning Kit



Caddy Tray



Spray Bottles



Microfiber hand mops

Gutter & High Reach Vacuuming REACHES UP TO 12 METERS HIGH

**SKYVAC
INTERNAL**



Internal Kit
(Included In Skyvac Internal)

**SKYVAC
COMMERCIAL**



External kit
(included in Skyvac Commercial-Industrial)

**SKYVAC
INDUSTRIAL**



SVACS2 100% carbon fibre pole (1.5 mtr x 8)



Other Accessories Upon Request



SVACS1 Camera & monitor



SVACS2 100% carbon fibre pole (1.5 mtr x 8)



High Reach



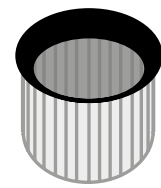
Huge Vacuum Lift Power



Rain Proof Camera and Monitor



DUST



Washable Cartridge



LIQUIDS

Features

- Cleaning and inspecting gutters and roofs has never been so easy and safe
- No need for expensive equipment to reach heights, such as scaffolding or special ladders
- Carbon fibre pole technology reduces the lifting effort (each pole weights just 310 grams)
- Skyvac Poles give 3 advantages to the operator: stability, strength and lightweight
- Internal model is suitable for indoor high reach cleaning, Commercial and Industrial models are also suitable for gutter cleaning and equipped with waterproof monitor and camera allowing you to monitor cleaning from ground level

MODEL	Application	N. of motors (by-pass)	Power (W) max	Voltage (V)	Water lift (mm H ₂ O)	Air flow (m ³ /hr.)	Tank cap. (Ltrs.)	Camera & Monitor	Pole Length (Mtr.)
SkyVac Internal	DRY	1xTwo stages	1200	220-240	2470	210	37	No	12
SkyVac Commercial	WET&DRY	2xTwo stages	2600	220-240	2500	430	72	Yes	12
SkyVac Industrial	WET&DRY	2xOne stage	2600	220-240	2380 Flomix OFF 3800 Flomix ON	400 Flomix OFF 220 Flomix ON	78	Yes	12

Industrial Vacuum Cleaners COMBUSTIBLE APPLICATIONS



C-10 EX (4W)

Features

- Ideal for housekeeping and general cleaning
- Includes 4 HEPA filters, class H14. Individually factory tested
- Heavy duty 2-stage by-pass motor
- Longer life brushless motor
- Material to be recovered within a conductive cloth recovery bag
- Indicator light to warn of vacuum blockage
- Recovery tank made of stainless steel SAE 430. Recovery tank made of stainless steel SAE 304 is also available
- Includes a complete static dissipative tool kit



C-10 EX (2+2W)

Features

- Ideal for housekeeping and general cleaning
- Includes 4 HEPA filters, class H14. Individually factory tested
- Heavy duty 2-stage by-pass motor
- Longer life brushless motor
- Material to be recovered within a conductive cloth recovery bag
- Indicator light to warn of vacuum blockage
- Recovery tank made of stainless steel SAE 430. Recovery tank made of stainless steel SAE 304 is also available
- Includes a complete static dissipative tool kit



C-25 EX TC WET & DRY

Features

- Longer life brushless motor, always with 4 x H14 HEPA filters
- Ideal for housekeeping and general cleaning
- By-pass Ametek® long life motor
- Indicator light to warn of vacuum blockage
- For wet & dry recovery
- All stainless steel SAE 304 construction (except cart)
- Stainless steel cart available
- Equipped with a heavy duty powder coated tilting cart and stainless steel drain valve for easy emptying of recovered materials
- Includes a complete static dissipative tool kit

Model	Usage	No. of motor	Max Power (W)	Supply (V/Hz)	Suction (mmH ₂ O)	Air flow (m ³ /hr.)	Protection (IP)	ATEX (Area)	Tank Capacity (Ltrs.)	Noise Level (dB(A))
C-10 EX (4W)	Dry	1	1200	240/50	2504	194	6X	22	19	72
C-10 EX (2+2W)	Dry	1	1200	240/50	2504	194	6X	22	38	72
C-25 EX TC	Wet & Dry	1	1200	240/50	2504	194	6X	22	56	76



DUPLEX 340 STEAM

Lightweight and balanced, with all the power of steam

Duplex 340 floor and carpet cleaning machine is feather-light and easy to manoeuvre in a single-handed operation.

This mid-range model is ideal for commercial facilities with mid-sized rooms and is used extensively in care homes, vets, hospitals, retail outlets, leisure, catering and educational facilities plus many more.

Effective for cleaning carpets, Polysafe, Altro, Marley, Tarkett, Flotex, Timbersafe, safety floors, non-slip resin floors, sports safety floors plus many more.

Features

- Patented homing guidance base, with its grooved wheels, keeps the machine on track in the working position
- Integral trolley, extractor included, detergent solution dispenser included
- Automatic electronic control of detergent dispensing
- Cleans without the need for aggressive chemicals, ecologically friendly and economically sound
- After steam cleaning, floors are left sanitised and virtually immediately dry



DUPLEX 350 ESCALATOR CLEANER

Duplex Escalator Professional: cost-effective quality

The Duplex Escalator range stands out for its ease of use and high quality results. It cleans an averagely dirty escalator or mobile walkway in just 15 minutes.

Brushes for any moving escalator

Duplex offers optional brushes for cleaning of escalators and moving walkways.

Features

- Maintenance cleaning or periodic deep cleaning for facilities with larger number of escalators or travelators
- Vacuum filtration to remove dust from the escalator or travelator
- Unique patented guide rail system allows safe operation whilst in motion
- Uses minimal water - a key requirement for escalator or travelator cleaning
- Range of dedicated brushes to suit various tread profiles
- Cleans right up to the edge of escalators and travelators
- Highly efficient machine cleans in just a few passes

Model	Solution Tank (Ltrs.)	Recovery Tank (Ltrs.)	Power (W)	Voltage (V) (50 Hz)	No. of Brushes (mm) (Ø)	Working Width (mm)	Brush Speed (RPM)	Vacuum Function	Weight (Kg)	Dimensions (LxWxH) (mm)
Duplex 340 Steam	2.1	1.9	1900	220-240	2x100	280	650-750	Mechanical	30	430x340x240
Duplex base 350	5.4	2.3	1000	220/240	2x120	350	650-750	Mechanical	28	475x465x250
Duplex 350 Escalator Professional	5.4	2.3	2250	220-240	2x120	350	650-750	Yes-14 ltr	50	475x480x250



Upright Vacuum BT 450

Features

- Ideal for small and medium surfaces
- High efficiency vacuum motor.
- Powerful rotating brush
- Efficient cleaning of carpets and rugs
- Multi-level filtration system
- Ergonomic and professional handle

Model	No. of Motors	Max Power (W)	Supply (V/Hz)	Suction (mmH ₂ O)	Air flow (m ³ /hr.)	Dust Bag Capacity (Ltrs.)	Cleaning Width (mm)	Cable Length (m)	Weight (kg)
BT350	2	870	220-240/50	2100	155	6.5	350	10	8.8
BT450	2	920	220-240/50	2100	155	6.5	450	10	9.3



NIKITA For large carpet areas

Nikita is a “step-on” carpet cleaning machine. It is ideal for very large areas of carpet and able to clean up to 1000 square metres of carpet in 1 hour. In a single pass, a 70cm strip of carpet is sprayed with a concentrated chemical solution, brushed with two counter-rotating brushes, rinsed and vacuumed.

With 2 three stage high-waterlift vacuum motors, Nikita can leave the carpet almost completely dry after the cleaning process. It is possible to perform a maintenance low-moisture cleaning or a restorative deep-cleaning. The pressure of the brushes and of the vacuum head is adjustable according to the carpet type. Turning a lever and using a specific chemical, Nikita can be used to clean the carpet with the “encapsulation” cleaning system.



ELITE-SILENT Extractor for carpets & hard floors

Elite-Silent is a self-contained extractor for carpet and hard floor with manual traction. It washes, brushes and dries a strip of 50 cm of carpet, moving forward, cleaning up to 500 sq. meters in one hour. Its 3 stage high-waterlift vacuum system allows to recover the maximum quantity of dirt from carpet and to get a shortest drying time.

Elite-Silent is a very silent machine, since it works with 60 Decibels only. It is possible to adjust the brush and vacuum head pressure, according to the type of carpet. The water-flow can be regulated, for a maintenance low-moisture cleaning or a restoration deep-cleaning.

Model	Working Width (mm)	Suction Width* (mm)	Productivity (M ² /hr.)	No. of Roller Brushes	Solution Tank (Ltrs.)	Recovery Tank (Ltrs.)	Power Supply	Max. Speed (Km/hr)	Weight (Kg)	Dimensions (LxWxH) (mm)
NIKITA MINI	500	500	300-600	1	50	50	36V(3X12V) 75Ah	3-6	238	500x1180x1240
NIKITA	700	700	500-1000	2	70	70	72V(6X12V) 75Ah	3-6	334	700x1200x1350
ELITE-SILENT	500	500	250-500	1	50	50	36V(3x12V) 38Ah	2-4	137	500x1020x1110

*Carpet



FOAMTEC15 Washroom hygiene

Foamtec15 is the smallest model in the range of machines working with Santoemma patented Foamtec system. This machine allows to completely clean and sanitize public restrooms by spraying a compact foam, rinsing and vacuuming.

Approximate performance: room with 25sqmt. of tiles +5 sanitary fixtures in 10 mins.

Foamtec15 is indicated for small places.

The cleaning process is carried out through four stages:

Spraying of foam on all the surfaces to be cleaned (walls, sanitary fixtures, showers and panes).

Chemical action against dirt and bacteria.

Rinsing with clean water to remove residuals from the surfaces.

Vacuuming of residual water from floor.

Model	Recovery Tank (Ltrs.)	Solution Tank (Ltrs.)	Supply (V/Hz)	Vacuum Motor (W)	Suction (mmH ₂ O)/ Airflow (m ³ /hr.)	Compressor (W)	Pump (W)	Pump Pr. (bar)	Rinse Pr.(bar)/ Flow (lpm)	Spray/ Suction Hose (M)
FOAMTEC15	14	14	220-240/50	1000	2200/180	350	90	9	3/4	5/5

IdroFoamRinse200



IdroFoamRinse200 is an innovative machine, electrically powered, allowing to spray compact foam and rinse continuously.

The water used for foaming and rinsing is directly taken from the water network, therefore the machine has an unlimited autonomy. Pure chemical is contained in its separate tank and is automatically used by the machine in a controlled quantity.

The internal air-compressor allows to produce foam with an optimal density, adjustable by the operator. It is not necessary to connect the machine to an external compressed air system. Rinsing is performed at an optimal pressure, suitable for small and medium-sized rooms.

Approximate performance: room with 40sqmt. of tiles +5 sanitary fixtures in 10 mins.

The cleaning process is carried out through three stages:

Spraying of foam on all the surfaces to be cleaned (walls, sanitary fixtures, showers and panes).

Chemical action against dirt and bacteria.

Rinsing with clean water.

Model	Foaming Autonomy	Rinsing Autonomy	Supply (V/Hz)	Compressor (W)	Pump (W)/ Pr.(bar)	Rinse Pr.(bar)/ Flow (lpm)	Water Consumption (litr./hr.)	Chemical Consumption (gr./sq.mtr.)	Spray Hose (M)
IdroFoamRinse200	Unlimited	Unlimited	220-240/50	350	90/14	4/4.5	14	10	10

Special Category Products



AIR BLOWER AB-21/SC

Features

- Fully sealed brushless DC motor, strong wind and low noise
- All-metal double wind wheels, ultra-dense air inlet design to prevent the motor from inhaling foreign matter
- 5 speeds, 0-8 hours timing with digital display tube
- With shockproof footpad the blowing vanes can be tilted to 45°
- The front-mounted handle can be equipped with a pull rod for easy movement

Model	Power (W)	Speed Mode	Max. Speed (m/sec)	Air Volume (m ³ /min)	Cable Length (M)	Noise Level (dbA)	Net Weight (kg)	Packing Size LxWxH (mm)
AB-21/SC	300	5	25	42.7	8	50±10	9.6	610x488x574



FOAM GENERATOR FG-21/SC

Features

- Can be used together with all kinds of floor cleaning machines
- Produces abundant and fine foam, so as to reduce the amount of water used
- Carpet dries faster after cleaning, gives an obvious and ideal cleaning effect

Model	Voltage (V/Hz)	Power (W)	Solution Capacity (Ltrs.)	Foam Generation (m ³ /min)	Safety Class	Noise Level (dbA)	Weight (kg)	Dimensions (WxH) (cm)
FG-21/SC	220-240/50	120	5	0.5	II	≤50	8	26x53



SG 07 SC

Features

- Handle for convenient transportation
- Durable ABS body+ Stainless steel 304 boiler
- Boiler with auto-filling tank for continuous use
- Pure copper heating plate
- PCB board intelligent control

Model	Boiler Volume (Ltrs.)	Working Pressure (bar)	Steam Temperature (°C)	Steam Flow Rate (g/min)	Absorbed Power (kW)	Power Supply (Ph-V-HZ)	Water Tank Capacity	Dimensions (LxWxH) (cm)	Weight (Kg)
SG 07 SC	1.2	5.0	140	65	1.8	1-230-50	2.5*	41x27x29	8.3



MOTORSCRUBBER

Features

- Reliable high torque motor allows for fantastic washing, polishing, cleaning and grinding results
- Cordless super portable, you can use it anywhere; stairs, swimming pools, motor vehicles. It's ideal for all hard to reach areas
- 100% waterproof and submersible in water with no shock risk due to its extra low safe voltage

Model	Scrubbing Width (mm)	Productivity (M ² /hr.)	Brush (RPM)	Battery (V-Ah)	Battery Type	Battery Performance (Hr.)	Charging Time (Hr.)	Weight (kg)
MOTORSCRUBBER	190	120	360	12-7	Sealed Lead Acid, 2.2 kg	4	Upto 8	2

Special Category Products



CT50 C40/B40 SC

Features

- Solution distribution from brush centre
- CWS (constant weight system)
- Brush replacement without tools
- SLS (self levelling system)
- Squeegee designed for the highest drying and productivity results

Model	Scrubbing Width (mm)	Suction Width (mm)	Productivity (M ² /Hr.)	Number of disc brushes	Solution Tank Capacity (Ltrs.)	Recovery Tank Capacity (Ltrs.)	Power Supply	Maximum speed (Km/Hr.)	Weight (Kg)	Dimensions (LxWxH) (mm)
CT50 C40 SC	510	755	1750	1	50	40	220-240V/50Hz	3.5	75	1250x630x1050
CT50 B40 SC	510	755	1750	1	50	40	24V (2x12V)x100Ah	3.5	148	1250x630x1050



MOPPING SCOOTY

The CT3900 is the three-wheel Mopping Scooter, installed with 4 pcs 12V/20Ah maintenance-free battery & 2pcs 900 mm mops.

It is very easy to operate and maintain and equipped with all the navigation systems for smooth operation and comfort of the operator.

A combination of the traditional mop and electric vehicle replacing the manual push mop. One machine is capable of completing the job that can be done with 10 labours using the traditional push mop, thus making it highly efficient and resulting in labour, time and cost savings.

Model	Max Working Width (mm)	No. of Mops	Productivity (M ² /hr.)	Power Supply	Battery Performance (hr.)	Working Speed (Km/hr.)	Transport Speed (Km/hr.)	Traction Motor (W)	Packing Dimensions (LxWxH) (mm)
MOPPING SCOOTY	900	2	9000	48V (4x12V)≈20Ah	4-6	5-6	15	350	1300x640x1040



LITTER PICKER

Litter picker is vacuum sweeper with manual controls. Factories, hospitals, schools, hotels are using the machine to clean indoor and outdoor areas. Manoeuvring capacity is highly developed and the machine provides very good motion ability to its user.

Litter picker is equipped with manual controls to clean parks and gardens. Cans, leaves, cigarette butts like garbage are swept in a short time. There is a water sprayer inside garbage tank to prevent the dust from billowing. The safe brake system on wheels will activate on high slopes and provide safe usage.

Model	Power Type	Tank Capacity (Ltrs.)	Traction Motor (W)	Speed (Km/hr.)	Battery Capacity	Vacuum Hose Dia. (mm)	Vacuum Motor Power (W)	Pump (W)	Dimensions (LxWxH) (cm)
ST240-G	Honda GX390	240	1200	6	2x12V	115	Turbine	48	220x95x160
ST240-B	Battery	240	1200	6	4x12V	115	4.1	48	170x80x160

TENNANT[®]

COMPANY

History

Advancing an Industry, Sustaining a Legacy

Founded in 1870 by George H. Tennant, Tennant Company began as a one-man woodworking business, evolved into a successful wood flooring and wood products company, and eventually into a manufacturer of floor cleaning equipment. Throughout its history, Tennant has remained focused on advancing our industry by aggressively pursuing new technologies and creating a culture that celebrates innovation. Today, Tennant is a global leader in designing, manufacturing and marketing solutions that help create a cleaner, safer, healthier world.



Partnership

From sales to service and support, Tennant Company will partner with you to find the right solutions for your facility.



Quality

Tennant Company is committed to exceeding customer expectations and meeting regulatory and quality management system requirements.



Ethics

Tennant Company's business ethics are rooted in our core philosophy of stewardship — leaving something better off than you found it.



Stewardship

At Tennant Company, we believe a good corporate citizen gives back to the global community in meaningful ways.

WHO WE ARE

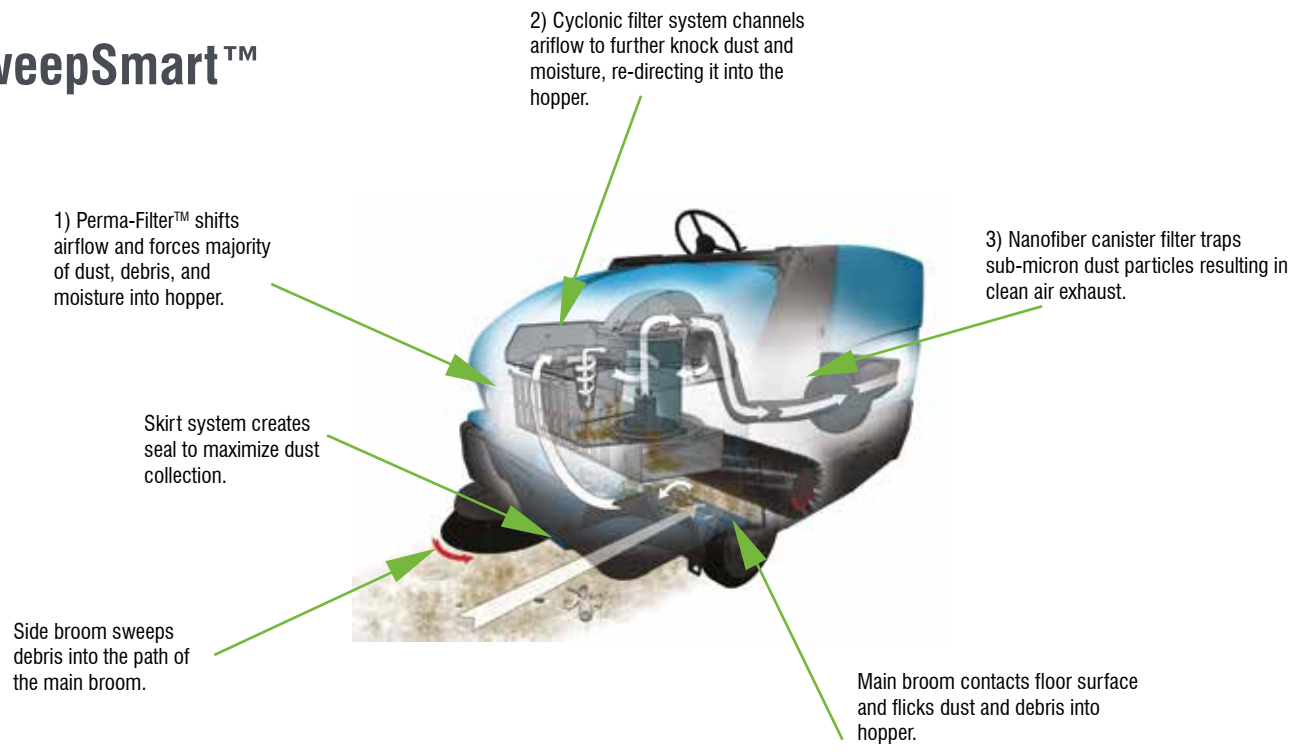
Building a Legacy of Quality and Innovation

Tennant Company is a recognized leader of the cleaning industry. We are passionate about developing innovative and sustainable solutions that help our customers clean more spaces more effectively, addressing indoor and outdoor cleaning challenges.

We lead our industry globally and fulfill our vision to bring to market sustainable cleaning innovations that empower others to create a cleaner, safer, healthier world. See how you can help us — and we can help you — change the way the world cleans.



SweepSmart™



Stage 1: Perma-Filter™

Reduce potential for damage and increase filter life.

- Keeps bulky debris, moisture and dirt in the hopper by shifting the airflow that makes these items fall into the hopper.
- Increases air speed, critical for maintaining consistent high-speed air flow.

Stage 2: Cyclones

Better sweeping results and more consistent air flow for long periods of time between filter shakes.

- Removes the majority of dust and moisture normally deposited into the filter (typical 2 stage systems).

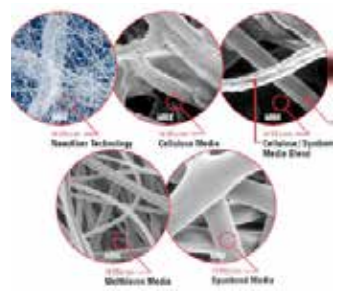


Stage 3: Nanofiber Canister Filter

- Nanofiber web filter
- Filters submicron dust particles
- Captures 0.5 micron particles at 99% efficiency
- Expected life:
 - 3x cellulose filters
 - 5x paper filters
- Near HEPA levels of filtration

Examples of some common air contaminants and their size in microns:

- Human Hair (70 - 100 microns)
- Spores from Plants (6 - 100 microns)
- Mold (2 - 20 microns)
- Smoke (.01 - 1 micron)
- Household Dust (.05 - 100 microns)
- Skin Flakes (0.4 - 10 microns)
- Bacteria (0.35 - 10 microns)



S20

Compact Ride-On Sweeper

Rely on the S20 Compact Ride-On Sweeper to deliver impressive performance – indoors or outdoors – even in harsh environments. Innovative Tennant technologies on the S20 reduce costs by extending run times, improving operator safety and simplifying maintenance. Help manage silica dust with our optional HEPA filtration system.



Key Benefits

- Get longer run times and filter life with ShakeMax 360 filter shaker that dislodges dust particles from deep folds and improves air filtration.
- Get maximum uptime with no-tool, easy-open covers for quick servicing.
- Decrease operating costs with SweepMax cyclonic pre-filter that removes most dust and moisture before it reaches the canister filter.
- Deliver exceptional dust release with lower operating pressure with nanofiber canister filter that lasts up to three to five times longer than other filters.
- Reduce cleaning time using optional dual side brushes, 62 in / 1,575 mm sweeping path and high-capacity debris hopper.

Features

HIGHLIGHTS

- Get exceptional dust control with exclusive SweepMax® cyclonic filtration that removes most dust and moisture.
- Clean your filter from the inside out, dislodging dust particles from deep within the filter pleats, with the ShakeMax® 360 filter shaker.
- Save time and training costs with intuitive, all-levers-forward operator controls and tool-free maintenance features.
- Achieve excellent cleaning performance, even in the most demanding environments.

Easy Operation & Maintenance

- Decrease downtime and costs with InstantAccess™ easy, which provides no-tool maintenance access to the Tennant S20 sweeper with easy-to-open covers.
- Reduce operator training time with simple, all-levers-forward operator controls.
- Achieve long machine life with the S20 Compact Ride-On Sweeper's corrosion-proof, heavy-duty Duramer™ hopper and shrouds.
- Store optional high-performance vacuum wand inside sweeper for easy accessibility.
- Choose optional no-tool brush change to make maintenance faster and easier.

Model	Working Width (mm) (with 1 side brush)	Main Brush	Productivity (M ² /hr.)	Hopper Capacity (Ltrs.)	Max Dumping Height (mm)	Diesel Engine	Filter Surface (M ²)	Max Speed (Km/hr.)	Dimensions (LxWxH) (mm)
S20	1270*	910	9650	310	1525	18.5 hp @2400 rpm	7.4	10	2090x1230x1260

*with 2 side brushes-1575

S30

Ride-On Sweeper

Easily pick up everything from cement dust to heavy debris with the powerful S30 Ride-On Sweeper. Achieve maximum performance and consistent cleaning results in the toughest applications – indoors or outdoors – with Tennant’s three-stage SweepMax® Plus dust control system. Help manage silica dust with our optional HEPA filtration system.



Key Benefits

- Achieve higher productivity with the optimized SweepMax Plus dust control system, which prevents more dust from going to the filter, resulting in less shake backs and more time spent sweeping.
- Keep bulky debris and moisture from reaching the filter by removing up to 90 percent of particulates from the air stream with the patented Perma-filter™ dust control stage.
- Minimize the maintenance time and cost of simple machine checks with no-tool InstantAccess™ filter and cyclone access.

Features

HIGHLIGHTS

- Maximize performance with three-stage SweepMax Plus cyclonic filtration and dust control system.
- Get outstanding performance indoors and outdoors, picking up everything from cement dust to heavy debris — indoors or outdoors.
- Achieve maximum efficiency with II-Speed™ sweeping technology that allows the operator to increase brush and vacuum speeds up to 20 percent to remove heavier debris.
- Take advantage of the only sweeper with a cyclonics pre-filter stage of dust control, which removes an additional 90 percent of dust particles from the air stream before reaching the filter.

Easy Operation & Maintenance

- Get maximum operator visibility with standard headlights and taillights and open sightlines.
- Avoid potential overheating with ThermoSentry heat sensor that alerts operator to sudden temperature elevations in the hopper.
- Reduce training time, even for novice operators, with all-levers-forward control layout and optional one-button worry-free operation.
- Keep operators safe and comfortable with optional FOPS-certified cabin.
- Reduce operator fatigue with cab-forward Ergospace™ compartment design that includes ergonomic seat, horn in the steering wheel center, and propel pedal.
- Reduce maintenance downtime with easy, no-tool brush removal and change.
- Perform simple machine checks quickly with InstantAccess filter and cyclone access that requires no tools.

Model	Working Width (mm) (with 1 side brush)	Main Brush	Productivity (M ² /hr.)	Hopper Capacity (Ltrs.)	Max Dumping Height (mm)	Diesel Engine	Filter Surface (M ²)	Max Speed (Km/hr.)	Dimensions (LxWxH) (mm)
S30	1588*	1145	12440	395	1525	37.5 hp Kubota	7.5	12.9	2360x1590x1475

*with 2 side brushes-2032

800

Industrial Ride-On Sweeper

The Tennant 800 Industrial Ride-On Sweeper is the largest, most powerful machine in its class. With its wide cleaning path, quad-filtering system and heavy-duty steel construction, it delivers consistent cleaning performance in the most demanding indoor or outdoor industrial and manufacturing environment. Help manage silica dust with optional HEPA filtration system.



Features

HIGHLIGHTS

- Capture everything from cement dust to heavy concentrations of pellets, rocks and glass.
- Get more continuous cleaning time with the sweeper's large capacity, multi-level hopper at 30 ft / 9 m.
- Control dry dust, even in the harshest, most congested sweeping environments, thanks to the Quad-filtering system.
- Maximize operator manoeuvrability, comfort and safety.

Key Benefits

- Maximize sweeping productivity with a wide cleaning path.
- Empty debris into containers as high as 6 ft / 1.8 m.
- Get long-lasting durability with the industrial floor sweeper's rugged steel T-beam superstructure and bend-resistant steel back wheel brackets.
- Prolong machine life and protect your investment with rear bumpers and optional corrosion-resistant stainless steel hopper bottom.

Easy Operation & Maintenance

- Simplify routine maintenance with easy-access brush and filter changes.
- Increase operator comfort with optional pressurized cabin with heating and air conditioning for controlled, comfortable environment year-round.
- Take advantage of a comfortable deluxe suspension operator seat, power steering and tilt steering wheel.
- Easily access all sweeper controls inside a spacious cabin.

Model	Working Width (mm) (with 1 side brush)	Main Brush	Productivity (M ² /hr.)	Hopper Capacity (Ltrs.)	Max Dumping Height (mm)	Diesel Engine	Filter Surface (M ²)	Max Speed (Km/hr.)	Dimensions (LxWxH) (mm)
800	1680*	1270	12760	800	1830	57.9 hp @2400 rpm	17	16	3048x1778x1335

*with 2 side brushes-2100

M20

Ride-On Sweeper-Scrubber

Improve productivity by delivering exceptional sweeping and scrubbing performance and enjoy health and safety benefits with the M20 Ride-On Sweeper-Scrubber. The M20 is easy to operate and maintain, and quickly enhances your facility's image by cleaning in a single pass – wet or dry.



Key Benefits

- Reduce the need for multiple machines with FloorSmart® integrated cleaning system technology that combines sweeping and scrubbing functions.
- Save on chemical purchasing, storing, handling and mixing with water-saving ec-H2O technology, which electrically activates water into an innovative cleaning solution.
- Increase productivity by expanding your cleaning path from 48 in / 1,220 mm up to 62 in / 1,575 mm with an optional scrubbing side brush.
- Protect your asset from damage upon impact with a heavy-duty wraparound steel bumper and optional rear squeegee guard.
- Extend machine life with a heavy-gauge steel frame and corrosion-resistant Duramer™ body construction.

Features

HIGHLIGHTS

- Effectively clean in just one pass – wet or dry – with FloorSmart® integrated cleaning system technology.
- Achieve consistent cleaning results with MaxPro²™ hydraulic technology.
- Use up to 70 percent less water and clean up to three times longer on a single tank with Tennant's innovative ec-H2O™ technology.
- Increase visibility with cab-forward design, open sightlines, and steering-wheel-mounted controls.
- Provide an easy operator and maintenance experience with intuitive controls and easy-to-identify yellow touch points.

Easy Operation & Maintenance

- Reduce training and simplify operation with the Touch-n-Go™ control module, featuring a 1-Step™ start button.
- Transform cleaning operations with optional Pro-Panel technology, which integrates multiple cleaning settings and on-demand videos into an intuitive, highly visible touchscreen interface.
- Easily care for solution and recovery tanks with design that allows for complete visual inspection and cleanout.
- Simplify preventative maintenance with easy-to-identify yellow maintenance touch points and no-tool squeegee and brush access.
- Make machine spray-down and cleanup quick and easy with the optional spray hose.

Model	Working Width (mm)		Suction Width (mm)	Productivity (M ² /hr.)	Disc Brushes	Solution/ Recovery Tank Capacity (Ltrs.)	Debris Hopper (Ltrs.)	Diesel Engine @2300 rpm	Working Speed (Km/hr.)	Dimensions (LxWxH) (mm)
	With Scrubbing Side Brush (mm)	With Sweeping Side Brush (mm)								
M20	1420	1370	1300	8190	2	212/ 276	110	18.5 kW	12.9	2410x1473x2120

T300 / T300E

Walk-Behind Floor Scrubbers

Clean virtually any hard surface, including porous stone, grout and finished concrete with the Tennant T300 / T300e High Performance Walk-Behind Floor Scrubbers. Keep every area of your facility clean and well-maintained with an affordable, battery-powered, walk-behind floor scrubber designed for versatility. And, when you add Tennant's innovative ec-H2O NanoClean® technology, you'll use electrically converted water to clean effectively, save money, and reduce environmental impact compared to daily floor cleaning chemicals.* Model T300 / T300e replaces Model T3 / T3+.



Features

HIGHLIGHTS

- Save time and money while protecting the environment when you add on Tennant's exclusive ec-H2O NanoClean® technology.
- Program Zone Settings™, machine configurations for particular parts of a building, and choose specialized head options to meet your environment's cleaning needs. The versatility of this walk-behind floor cleaner is unmatched in the industry.
- Use the T300 / T300e High Performance Walk-Behind Scrubbers as a concrete floor scrubber and perform daily cleaning of finished concrete.

Key Benefits

- Simplify training, reduce costs to clean and ensure optimal results with optional T300 LCD Pro-Panel™ on-board videos.
- Ensure quiet daytime cleaning with a vacuum motor that allows the Tennant T300 / T300e Scrubbers to clean as low as 57.9 dBA.
- Help lower your labor costs and improve cleaning performance with optimal down pressure and high RPM.
- Help prevent breakdowns and simplify preventative maintenance and training requirements with yellow touch points.

Easy Operation & Maintenance

- Install TennantTrue® brushes and pads safely, quickly and ergonomically with the patent-pending Insta-Click™ head. Insta-Click™ comes standard on the Tennant T300 scrubber and is an optional upgrade on the T300e.
- Reduce the chance of spills and fill the unit faster with an easy fill port. The integrated hose clip keeps the hose in place, allowing the operator to work on other tasks during the filling process.
- Help ensure the machine is operated in a safe manner and provide simplified training with optional Tennant T300 scrubber's LCD Pro-Panel™ on-board videos.

Model	Scrubbing Width (mm)	Suction Width (mm)	Productivity (M ² /hr.)	Disc Brushes	Solution / Recovery Tank Capacity (Ltrs.)	Brush RPM/ Pressure	Power Supply	Dimensions (LxWxH) (mm)
MV-T300-2000	500	722	1858	1	42/ 53	230/35 kg	2X12V, 140 Ah @C20	1372x559x1095
MV-T300E-1002	500	722	1858	1	42/ 53	150/23 kg	2X12V, 140 Ah @C20	1302x559x1095

*ec-H2O NanoClean® Optional

T350

Stand-On Floor Scrubber

High productivity rates and great manoeuvrability make this stand-on scrubber an ideal choice for large or obstructed spaces. Choose Tennant technologies like the ec-H2O NanoClean® system and Smart-Fill™ automatic battery watering for added benefits.



Key Benefits

- Take advantage of the T350's optimal down pressure, fast brush speeds and large-capacity solution and recovery tanks to clean effectively with fewer dump-fill cycles.
- Maximize uptime with a durable design, easy-to-access mechanicals, and readily available TennantTrue® parts and consumables.
- Assist operators with preventative maintenance and streamline their training with yellow maintenance touch points.
- Simplify training and obtain optimal results when you choose the T350 Pro-Panel™ with on-board maintenance videos.
- Use programmable Zone Settings to reduce set-up time for operators and clean more consistently.

Features

HIGHLIGHTS

- Clean faster and longer with category-leading productivity rates exceeding 30,000 square feet (2,795 square meters) per hour.
- Ensure consistent cleaning results with programmable Zone Settings™ that reduce dependence on operator set-up for different cleaning conditions.
- Reduce the risk of slip-and-fall accidents and ensure soils are removed from the floor with optimized squeegee design and recovery system.
- Ensure operator comfort and control with ergonomics designed for a stand-on scrubber and easy-to-use machine controls.

Easy Operation & Maintenance

- Ensure operator comfort and control with ergonomics designed for a stand-on machine with easy-to-use machine controls.
- Minimize the risk of slip-and-fall accidents with the optimized water recovery system and when you choose the T350 with ec-H2O NanoClean technology.
- Maintain wet batteries easily with Smart-Fill automatic battery watering.
- Perform routine maintenance efficiently with on-board tutorial videos.
- Increase operator comfort by managing machine speed via a speed dial on the console.
- Remove and maintain cleaning pads and brushes with less effort with the T350's Insta-Click™ magnetic cleaning head.

Model	Scrubbing Width (mm)	Suction Width (mm)	Productivity (M ² /Hr.)	Number of disc brushes	Solution/ Recovery Tank Capacity (Ltrs.)	Power Supply	Maximum Speed (Km/hr.)	Weight (Kg)	Dimensions (LxWxH) (mm)
T350-1003D	500	765	2946	1	53/70	24V(4X6V) 180Ah	5.8	329	1397x673x1245

T7

Ride-On Floor Scrubber

Clean both large areas and tight spaces easily with a floor scrubber designed for greater efficiency and less environmental impact. The T7 Ride-On Floor Scrubber uses Tennant's innovative ec-H2O NanoClean® technology to reduce the amount of detergent and water needed.



Features

HIGHLIGHTS

- Reduce detergent usage and use up to 70 percent less water with ec-H2O NanoClean®.
- Reduce occurrence of bacteria, mold and odours with easy-to-clean tanks.
- Reduce risk of slip-and-fall injuries with drier floors.

Key Benefits

- Simplify training and reduce re-work with intuitive, easy-to-understand controls.
- Eliminate the need to transport floor scrubber machines to a dedicated charging location with optional on-board charger.
- Enable energy-saving daytime cleaning with an operating noise level as low as 67-69 dBA .

Easy Operation & Maintenance

- Clean tight spaces like narrow aisles with this compact, highly manoeuvrable scrubber.
- Easily access and clean Hygeinic® solution and recovery tanks.
- Maintain sparkling floors and remove the guesswork from brush maintenances with a built in brush wear indicator.
- Increase ease of use with the new Insta-Fit™ Brush Adapter, which reduces the time and effort required to replace or change disk brushes.
- Improve operator productivity using this scrubber's simple controls, ergonomic design and clear sight lines.
- Get drier floors with a no-hassle squeegee system that is factory set at the optimum blade angle.

Model	Scrubbing Width (mm)	Suction Width (mm)	Productivity (M ² /hr.)	Number of disc brushes	Solution Tank Capacity (Ltrs.)	Recovery Tank Capacity (Ltrs.)	Power Supply	Maximum Speed (Km/hr.)	Weight (Kg)	Dimensions (LxWxH) (mm)
T7	810	1000	5230	2	110	110	24V(4X6V) 180Ah	5.8	386	1520x810x1270



T17

Battery-Powered Ride-On Floor Scrubber

An innovative, high-performance battery scrubber focused on delivering customized solutions to meet customer needs. The T17 cleans effectively in just one pass, enhances indoor air quality, and improves operator and supervisor experience, all in one machine!



Key Benefits

- Clean with exclusive Tennant ec-H2O™ technology and reduce your reliance on detergents.
- Reduce water use up to 70 percent with ec-H2O™ technology and scrub up to three times longer with a single tank of water.
- Reduce cost of operation with this heavy-duty, low-maintenance scrubbing system and AC brushless propelling motor.
- Enable full-shift cleaning while enjoying full battery capacity by utilizing opportunity charging.

Features

HIGHLIGHTS

- The optional pressure washer delivers a 2500 psi spray to clean tough soils while the optional live wand quickly picks up miscellaneous lightweight debris like shrink wrap.
- Leverage existing fuel cell infrastructure with a fuel cell ready Tennant T17 scrubber.
- Transform cleaning operations with optional Pro-Panel™ technology, which integrates multiple cleaning settings and on-demand videos into an intuitive, highly visible touchscreen.
- Increase productivity and ease of use with the Touch-n-Go™ control panel featuring 1-Step™ start button that remembers previous settings.

Easy Operation & Maintenance

- Quickly identify maintenance locations with yellow maintenance touch points.
- Prevent messy cleanups and over flows with the easy-to-adjust Variable Drain Valve™.
- Optional Pro-Panel™ technology integrates multiple controls into an intuitive, high visibility touch screen interface.
- Easily inspect and clean the recovery tank with the recovery tank access step.
- Deliver an easier and more efficient service experience with technician-friendly design.

Model	Scrubbing Width (mm)	Suction Width (mm)	Productivity (M ² /hr.)	Number of Disc Brushes	Solution Tank Capacity (Ltrs.)	Recovery Tank Capacity (Ltrs.)	Power Supply	Maximum Speed (Km/hr.)	Weight (Kg)	Dimensions (LxWxH) (mm)
T17	1015	1245	7860	2	285	346	36V 750Ah	6.5	875	2245x1168x1480

Corporate Sustainability

Creating a Cleaner, Safer, Healthier World

A Message from Our President and CEO



David W. Huml
President and Chief Executive Officer

I believe that the culture and success of Tennant Company's 150-year legacy is directly tied to our mission to empower our customers to create a cleaner, safer, healthier world. We aspire to make our communities better, and our focus on community translates into a culture of respect and care for our colleagues, our neighbors, our environment, our customers and business partners.

The annual 'Corporate Sustainability Report' highlights our commitment to our community and the environment through investments in our four focus areas: Products, GHG Emissions/Energy, Waste, and People & Communities. I encourage you to explore the report and supporting documents on our sustainability webpage to learn more about the significant impacts our teams have made over the last year.

I am proud of the work our employees have done to advance progress towards our sustainability targets and look forward to continuing our sustainability journey as we work together to create a cleaner, safer, healthier world.

Industry Leading Solutions

Tennant Company is a global leader in sustainable cleaning technologies. We design, manufacture, and market innovative cleaning equipment, parts and supplies, plus specialty coatings. For more than 150 years, we have changed the way customers clean – and consistently raised expectations for cleaning performances.

We invest in research and development that delivers new levels of cleaning efficiency and effectiveness. For leading solutions in cleaning, look to the industry leader: Tennant Company.



Our Global Reach

Tennant's global field service network is the most extensive in the industry. Tennant sells products directly in 15 countries and through a network of distributors in more than 80 countries.

Our Primary Purpose

We design, manufacture and market scrubbers, sweepers, burnishers, extractors, vacuums and other cleaning equipment that meet the needs of customers worldwide. Our machines clean millions of square feet of concrete, carpet, vinyl composition tile and synthetic wood every day.



TENNANT
COMPANY

CELEBRATING 150 YEARS

1870-2020 

IP Cleaning India Pvt.Ltd. (Estd. 1996) **(100% subsidiary IP Cleaning SRL Italy)**

Head Office : Block B-1, Plot No. A-27, Mohan Co-operative Indl. Estate,
Mathura Road, New Delhi – 110044

Tel. : 011-2695 0231 / 32, 011-41068725 Email : info@ipcleaning.in

Website : www.ipcworldwide.com/in/, www.ipcleaning.in, www.tennantco.com

Branches :

JAIPUR

Ground Floor, C-50,
Radha Madhav Nikunj
Sethi Colony, Near Transport Nagar
Jaipur – 302004, Rajasthan

CHANDIGARH

Ground Floor, Plot No 51,
Sector 82, (Industrial Area),
Mohali – 160055

INDORE

Plot No. P 147,
Scheme Number 53,
Opposite Of Orange Lily Hotel,
Vijay Nagar, Indore – 452010, MP

KOLKATA

CD-67, Salt Lake City,
Sector-I,
Kolkata – 700064

JAMSHEDPUR

Ground Floor Plot no.51,
House No.119,
Sitaramdera New layout,
Jamshedpur – 831009

AHMEDABAD

Ground Floor G -25,
Sumel Business Park -6
Opp. Hanuman Pura,
BRTS Dudheshwar Road
Shahibaug, Ahmedabad – 380004

VADODARA

Shree Krishna Palace,
A/12-Ghanshyam Park Society,
30 Meter Chhani-Sama Narmada
Canal Road, New Sama,
Vadodara – 390002

PUNE

Plot no. 72-76, Near Bharat
Forge, Mundhwa Industrial
Area, Mundhwa
Pune – 411036

MUMBAI

Shop No. 3, Ground,
Managaldeep CHS Ltd.
90 Ft Road Opp, Kelkar College,
Mulund East,
Mumbai – 400081

BANGALORE

Plot No. 225, 1st Cross,
Nagarabavi 2nd Stage,
12th Block, Bangalore – 560 072.

SECUNDERABAD

Plot No. 11, PWD Officials Colony,
Near Diamond Point,
Secunderabad,
Telangana – 500009

CHENNAI

11/7, Bharathidasan Colony,
Main Road,
K.K Nagar,
Chennai – 600078

ERNAKULAM

35/3039 B, Ground Floor,
SB Building, M.V Road,
PO Palarivattom,
Ernakulam – 682025, Kerala

BHUBANESHWAR

No:2375/922/9365,
Puri Bypass Road, NH-316,
Baragada,
(Landmark Tankapani Sai Temple)
Unit-35, Bhubaneshwar – 751018
Odisha

Our Partners are also at :

NORTH : GREATER NOIDA | BHIWADI | KANPUR | BAREILLY | UDAIPUR | AJMER | KOTA | JODHPUR | DEHRADUN | AMRITSAR | SRINAGAR

EAST : RANCHI | PATNA | GUWAHATI

WEST : GOA | NASHIK | NAGPUR | KOLHAPUR | RAJKOT | BHARUCH | VAPI

SOUTH : TRICHY | COIMBATORE | VIZAG | BELGAUM