



GranuAqua Tanks Private Limited



Bolted Water Tanks

Easily Expandable

Best possible corrosion resistance

Extremely cost effective

I.G.B.C. Approved green building material

Reduced lifecycle cost

Effective and fast installation

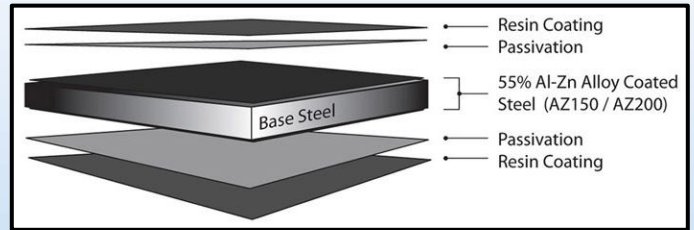
Re-locatable

Contact No. 90 28 28 19 49

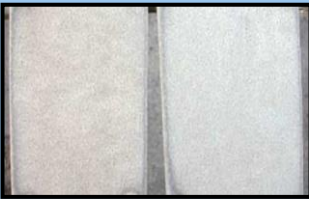
Zincalume® (TANK BODY)

The base metal of steel is coated with an alloy of Zinc Aluminium and silica and then with another layer of resin making it the best corrosion resistant sheet metal product in the market.

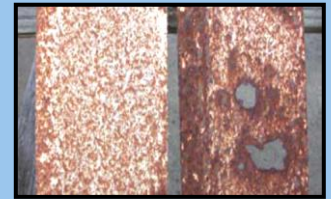
ZINCALUME steel complies with AS1397, ASTM A792M, IS 15961 and ISO 9364 standards and also Australian standard AS: 1397-2002, American standard ASTM A 792M and IS 15961:2012.



ZINCALUME steel Environment Exposure for 12 year



GALVANIZED steel Environment Exposure for 12 year



The corrugated design of the sheet provides extra strength to the walls of the tanks as compared to the conventional flat-curved metal which results in lesser overall thickness as compared with conventional metal tanks.

Exclude sunlight from the liquid as much as possible to minimise the growth of algae. Inspection and access points have tightfitting closures. All roofs collect debris, dust and bird droppings, so use a device that diverts the first flush or run-off from the roof to drain.

It is better, fast & cost effective mode of raw water and other liquid storages rather than other conventional market options like PVC, RCC or bare steel tanks.



Internal Liner

The key advantage of these tanks is use of an internal food grade PVC liner to ensure that the water in no way comes into contact with the steel wall of the tank. Tank liners consist of several permanently bonded reinforced PVC layers around a tough internal High Density Polyethylene woven Reinforcing known as the 'Scrim'.

- **Thickness varies from 0.7mm to 1.2mm**
- **Liner Bag is tested for 2kg/cm² for any Leaks**
- **Food Grade**
- **Temperature(-20°C to +70°C)**
- **Ph range (3 to 13)**
- **UV Stabilized**



These tanks can be made **on ground, under ground and partially above ground** also. This lets the designers and planners a variety of options with the orientation of the storage.



The capacities range from **10 KL to 5000 KL** depending upon the design and application requirements of the users.

The application of these pre-engineered bolter storage tanks vary from **raw water storage, fire hydrant water storage, S.T.P. contaminated water storage, rain water storage, etc.** All accessories and nozzles area **hot dip galvanized** and the transportation of a complete setup can be done on one truck loading (depending upon the size).



All the components are Shipped to the site and then assembled by professional installers in a couple of days ready to use.



GranuAqua Tanks Private Limited

Pre-Engineered is better than Engineered

TANK VOLUMETRIC CHART in Kilo Litres

All Dimensions are in metres		Rings	R1	R2	R3	R4	R5	R6	R7	R8	R9	R10
		Height	1.12	2.08	3.03	4	4.95	5.9	6.87	7.82	8.8	9.76
Code	Diameter											
GA02	1.84		2.98	5.53	8.06	10.64	13.16	15.69	18.27	20.79	23.4	25.95
GA03	2.77		6.75	12.53	18.26	24.11	29.83	35.56	41.4	47.13	53.03	58.82
GA05	3.69		11.98	22.24	32.4	42.78	52.94	63.09	73.47	83.63	94.11	104.37
GA08	4.61		18.69	34.72	50.57	66.77	82.62	98.48	114.67	130.53	146.88	162.91
GA12	5.53		26.9	49.96	72.78	96.07	118.89	141.71	165	187.82	211.36	234.42
GA15	6.46		36.71	68.17	99.31	131.1	162.24	193.38	225.17	256.31	288.43	319.89
GA15M	6.88		41.58	77.21	112.48	148.49	183.76	219.02	255.03	290.3	326.68	362.31
GA20	7.23		45.98	85.39	124.4	164.22	203.22	242.22	282.05	321.05	361.28	400.7
GA20M	7.74		52.63	97.74	142.38	187.96	232.6	277.24	322.83	367.47	413.52	458.63
GA25	8.3		60.6	112.54	163.94	216.42	267.83	319.23	371.71	423.11	476.13	528.08
GA25M	8.59		64.97	120.65	175.76	232.03	287.13	342.24	398.51	453.61	510.46	566.15
GA30	9.23		74.94	139.17	202.74	267.64	331.21	394.77	459.67	523.24	588.81	653.04
GA30M	9.63		81.56	151.47	220.65	291.28	360.46	429.64	500.28	569.45	640.82	710.73
GA40	10.15		90.62	168.3	245.17	323.65	400.52	477.39	555.88	632.74	712.04	789.72
GA40M	10.5		97.05	180.24	262.57	346.62	428.95	511.27	595.33	677.65	762.57	845.76
GA45	11.07		107.8	200.19	291.63	384.99	476.42	567.85	661.21	752.65	846.97	939.37
GA45M	11.59		118.08	219.29	319.45	421.71	521.87	622.03	724.29	824.45	927.77	1028.98
GA50	12		126.67	235.24	342.68	452.39	559.83	667.27	776.98	884.42	995.26	1103.83
GA50M	12.48		136.96	254.36	370.53	489.15	605.32	721.49	840.11	956.28	1076.12	1193.52
GA60	12.92		146.84	272.7	397.24	524.41	648.96	773.51	900.68	1025.23	1153.71	1279.57
GA60M	13.37		157.22	291.98	425.33	561.5	694.85	828.21	964.37	1097.73	1235.29	1370.05
GA70	13.84		168.49	312.91	455.83	601.76	744.68	887.59	1033.52	1176.44	1323.87	1468.29
GA70M	14.26		178.87	332.19	483.92	638.84	790.56	942.28	1097.2	1248.92	1405.44	1558.76
GA80	14.77		191.9	356.38	519.15	685.35	848.12	1010.89	1177.08	1339.85	1507.76	1672.25
GA80M	15.15		201.95	375.05	546.35	721.26	892.56	1063.85	1238.76	1410.06	1586.76	1759.87
GA90	15.69		216.55	402.16	585.84	773.39	957.06	1140.74	1328.29	1511.97	1701.45	1887.06
GA90M	16.04		226.4	420.46	612.5	808.58	1000.61	1192.65	1388.73	1580.77	1778.87	1972.93
GA100	16.61		242.69	450.71	656.56	866.74	1072.59	1278.44	1488.63	1694.48	1906.83	2114.85
GA100M	16.93		252.25	468.46	682.42	900.88	1114.84	1328.8	1547.27	1761.23	1981.95	2198.16
GA110	17.53		270.32	502.02	731.3	965.41	1194.7	1423.99	1658.1	1887.38	2123.91	2355.61
GA110M	17.83		279.49	519.05	756.12	998.18	1235.25	1472.32	1714.37	1951.44	2196	2435.56
GA120	18.45		299.43	556.09	810.08	1069.41	1323.39	1577.37	1836.7	2090.69	2352.69	2609.35
GA120M	18.72		308.16	572.3	833.69	1100.58	1361.97	1623.36	1890.25	2151.64	2421.28	2685.42
GA130	19.37		330.04	612.93	892.88	1178.72	1458.66	1738.61	2024.44	2304.39	2593.17	2876.07
GA130M	19.61		338.2	628.09	914.95	1207.86	1494.73	1781.59	2074.5	2361.37	2657.29	2947.18
GA140	20.29		362.14	672.54	979.71	1293.34	1600.51	1907.68	2221.32	2528.49	2845.36	3155.76
GA140M	20.5		369.64	686.47	1000	1320.13	1633.66	1947.19	2267.32	2580.85	2904.28	3221.11
GA150	21.21		395.72	734.91	1070.57	1413.29	1748.95	2084.6	2427.33	2762.98	3109.24	3448.43
GA150M	21.77		416.97	774.37	1128.05	1489.18	1842.86	2196.54	2557.66	2911.34	3276.19	3633.59
GA160	22.16		431.96	802.22	1168.62	1542.73	1909.13	2275.52	2649.64	3016.03	3394	3764.26
GA160M	22.68		452.47	840.31	1224.1	1615.98	1999.78	2383.57	2775.45	3159.24	3555.16	3942.99
GA170	23.08		468.58	870.21	1267.66	1673.48	2070.94	2468.39	2874.21	3271.66	3681.66	4083.3
GA170M	23.59		489.39	908.86	1323.97	1747.81	2162.92	2578.03	3001.87	3416.98	3845.19	4264.67
GA180	24		506.68	940.97	1370.74	1809.56	2239.33	2669.1	3107.91	3537.68	3981.03	4415.32
GA180M	24.49		527.75	980.11	1427.75	1884.82	2332.46	2780.11	3237.17	3684.82	4146.6	4598.95
GA190	24.9		545.39	1012.87	1475.47	1947.82	2410.43	2873.03	3345.38	3807.99	4285.2	4752.68
GA190M	25.39		566.84	1052.71	1533.51	2024.44	2505.24	2986.04	3476.97	3957.77	4453.76	4939.63
GA200	25.85		587.8	1091.63	1590.21	2099.28	2597.86	3096.44	3605.52	4104.1	4618.42	5122.25

OFFICE B-503, Space Olympia, Sutgiri Chowk, Aurangabad, 431005
 FACTORY Gut No. 114, Mumbai-Nagpur Highway, Karodi, Waluj, Aurangabad.
 info@granuaqua.com | granuaqua.com