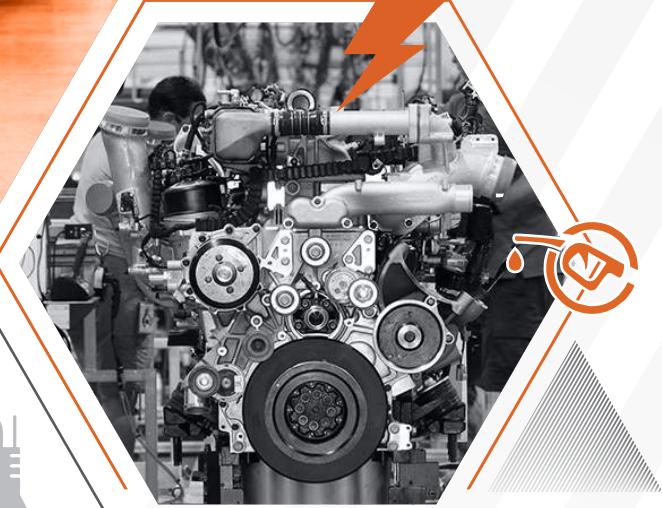
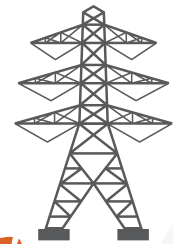




Engage ★ Performance ★ Service



# ELITE ENGINEERING

To Become Global Player In Precision Parts.



# PROFILE

## To Become Global Player In Precision Parts

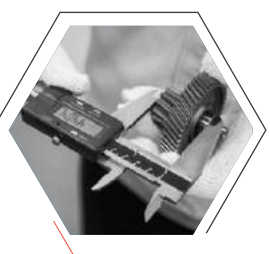
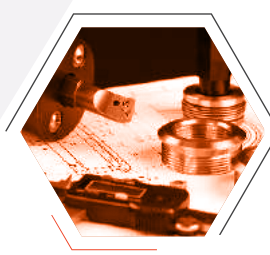
Elite Engineering are Jamnagar (India) based manufacturer, exporter & OEM supplier of precision machined components, castings, extrusions, forgings, stampings, machined assemblies catering Indian as well as off shore regions in USA, UK, Europe, Middle-East and South East Asia market. Our components are technologically advanced and have high level of performance that has earned us global recognition.

Elite Engineering offers superior craftsmanship when it comes to turned components, precision machining and die-casting operations, leaving no stone unturned when it comes to meeting your precise industrial requirements. Our capabilities go the extra mile in offering the best in class customized parts to suit your diverse set of industrial applications. Our promise to delight our customers comes from our strong network of strategic partners across India with a highly qualified staff of skilled operators, thereby contributing efficiently to projects globally.

Being an ISO 9001 certified company and in the old of manufacturing activities for more than a decade, we are committed in our efforts to give you total satisfaction in terms of product and service ensuring CUSTOMER DELIGHT!

Elite specializes in the processing of grades of stainless steel, brass, bronze aluminium copper, cast iron, gun metal, inconel & nickel. Our core capability when it comes to machining, happens to be for component sizes from 3mm to 200mm dia and up to a length of 500 mm with a tolerance up to 5m offering a surface finish of up to 0.3/Rz 2 on diameter & bore.

With state of the art manufacturing facility, ELITE specializes in best in class foundry offering Pressure Die casting of Aluminum & Zinc alloy materials for a capacity of 80 to 1200 tonnage with automated pouring, mould design and mould flow analysis for component weighing upto 20 kg. Sand-casting, Gravity die casting and copper & alloy casting happen to be the rest of the processes which meets the dynamic needs to our customers internationally.



# ELITE ENGINEERING

Manufacturer of ferrous and non-ferrous metal parts for Automobiles, Electrical & Electronics, Brass Fittings, Casting & Forging Components, Complete Brass Assembly and all other parts as per customer drawings. Complete customization including post processing like plating, powder coating, superfinishing operations.



## VISION

To Become Global Player In Precision Parts.



## MISSION

To Supply Quality Products With Prompt & Efficient Service At Competitive Costs.



## VALUES

- Customer first attitude
- Honour commitments
- Honesty and Integrity
- Focus on Quality



## QUALITY

Trained engineers perform First Pcs Approval, In-Process Inspection cross checking and final inspection. Readings are measured using our calibrated equipment's and recorded in computer online. Every component manufactured has a batch wise job sheet that describes the PPM level of the product with details of the non-conformance. PPAP documents up to level 5 can be provided on request.



**500+**  
Products



**150+**  
Customer



**2011**  
Established

We offer a complete solution from in-house raw material to finished components, including Casting, Forging, Machining, Testing and Assembly to warehousing of these parts.





# INDUSTRIES SERVED

**AUTOMOTIVE**  
INDUSTRY



**LIFE SCIENCES**  
INDUSTRY



**AGRIBUSINESS**  
INDUSTRY

**ENGINEERING**  
CONSTRUCTION



**TEXTILES**  
INDUSTRY

**HEALTH CARE**  
INDUSTRY



**CHEMICALS**  
INDUSTRY

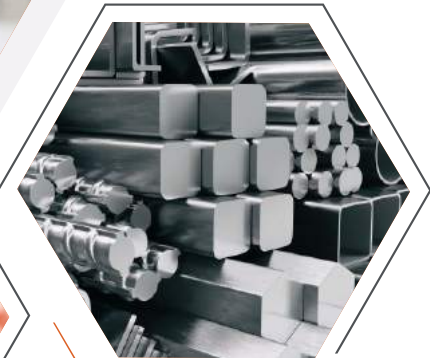
**INDUSTRIAL**  
MACHINERY



**FOOD**  
PROCESSING



**RETAIL**  
PROCESSING



**MIL**  
PRODUCTS

# AUTOMOBILE BUSH

## Kingpin Bush

Elite Engineering manufactures all types of Bushes like Kingpin Bush, Bell Crank Bush, Leaf Spring Bush, Engine Bush for Light & Heavy Commercial Vehicle & Industrial Bushes.

### Material

- ▶ Free Cutting Brass
- ▶ Lead Free Brass
- ▶ Leaded Bronze
- ▶ Manganese Bronze
- ▶ Aluminium Bronze
- ▶ Aluminium Silicon Bronze
- ▶ Phosphorous / Tin Bronze Bush
- ▶ Nickel Aluminum Bronze
- ▶ Silicon Bronze
- ▶ Copper
- ▶ Gun Metal
- ▶ As Per Customer Requirement



## Bell Crank Bush



### Application

- ▶ Truck
- ▶ Trailer
- ▶ Defense Vehicle
- ▶ Utility Vehicle
- ▶ Bus
- ▶ Tractor
- ▶ Construcon Vehicle
- ▶ Fire & Rescue
- ▶ Mobile Cranes

## Leaf Spring Bush



### Features

- ▶ Excellent Finish
- ▶ Dimensional Stabillty
- ▶ Easy to Install
- ▶ Accurate Dimension
- ▶ Rust Proof
- ▶ Non-Corrosive Surface

## Groove Type





# FASTENERS

## Bolt & Nut



### Bolt

- ▶ Carriage Bolt
- ▶ Hex Bolt
- ▶ Hex Flange Bolt
- ▶ Wing Bolt
- ▶ Flange Bolt
- ▶ Thumb Bolt
- ▶ Brass Eye Bolt
- ▶ Square Bolt
- ▶ Copper Bolt
- ▶ Special Bolt
- ▶ Full Thread Hex Bolt
- ▶ Half Thread Bolt

### Material :

#### Lead Brass

- ▶ Free Cutting Brass IS 319 Type (|)/(| |)
- ▶ Forging Brass
- ▶ High Tensile Brass
- ▶ Riveting Brass
- ▶ Commercial Brass

#### Lead Free Brass

- ▶ Naval Brass & DZR Brass
- ▶ Bronze & Aluminum Bronze
- ▶ Silicon Bronze & Manganese Bronze
- ▶ Nickel Aluminum Bronze
- ▶ As per Customers Requirement

### Nut

- ▶ Coupling Nut
- ▶ Castle Nut
- ▶ Crown Acorn Nut
- ▶ Flange Nut
- ▶ Flare Nut
- ▶ Hex Nut
- ▶ Jam Nut
- ▶ Knurled Thumb Nut
- ▶ Round Nut



## Stud



### Size :

#### Diameter Range

- ▶ U Above M30 by Hot Forging.
- ▶ U M3 to M30 by Cold Forging.

#### Length

- ▶ 6mm to 300mm by Cold Forging.
- ▶ Above 30 mm by Hot Forging.

#### Threads

- ▶ ISO Metric (MM Threads)
- ▶ BA Threads
- ▶ BSW Threads (inches)
- ▶ UNC, UNF & UNFE Threads
- ▶ Any threads as per custom design

#### Standard

- ▶ JIS
- ▶ ANSI
- ▶ BIS
- ▶ IS
- ▶ DIN
- ▶ ISO

- ▶ As per customer specifications.



# FASTENERS

## Screw



### Features

- ▶ Best Finishing
- ▶ Durability
- ▶ Dimensional Accuracy
- ▶ Higher Tensile Strength
- ▶ Resistance to Rust and Corrosion
- ▶ Visual Parameter

### Type

- ▶ Cheese Head Slotted Screw
- ▶ Counter Sunk Head Slotted Screw
- ▶ Round Head Slotted Screw
- ▶ Pan Head Slotted Screw
- ▶ Raised Head Slotted Screw
- ▶ Philips Head Screw
- ▶ Combination Head Screw
- ▶ Socket Head Screw
- ▶ Thumb Screws Slotted Grub Screw
- ▶ L Shape Screw
- ▶ Corby Screw



## Washer



### Type

- ▶ Conical Spring Washer
- ▶ Contact Washer
- ▶ Cup Washer
- ▶ Curved Washer
- ▶ Disc Spring Washer
- ▶ External Tooth Lock Washer
- ▶ Fender Washer
- ▶ Flat Washer
- ▶ Internal Tooth Lock Washer
- ▶ Nord Lock Washer
- ▶ Overlap Washer
- ▶ Propeller Washer
- ▶ Serrated Locked Washer
- ▶ Split Lock Washer
- ▶ Square Washer
- ▶ Taper Washer
- ▶ Thin Shim Washer
- ▶ Wave Washer

### Finish & Coating

- ▶ Nickel Plated
- ▶ Tin Plated
- ▶ Copper Plated
- ▶ As per customer specification



# EARTHING ACCESSORIES

## Split Bolt

Split Bolt Connector is designed for the sequence and transportation of all kinds of conductor in electric network. It is made of brass, bronze, copper or copper coated brass, stainless steel and aluminum



### Material

- ▶ Brass - IS319, Free Cutting, BS 249, CuZn39Pb3, CW614N, CW602N, CZ132, C35330
- ▶ Any Special Brass Material Composition
- ▶ As per Customer Requirements.

### Application

- ▶ Cable Lines
- ▶ Splicing Wires
- ▶ Connecting Ground
- ▶ Telephone Line



## Earthing & Lighting



### Size

As per customer specification any kind of parts can be developed and supplied exactly as per requirement.

### Threads

ISO metric, MM, PG, BSW, BSP, BSB, BSF, BA, NPT, MPTF, UNC, UNF, UNEF etc Any threads as per customer design.

### Finishing / Plating

Brass Natural, Tin, Nickel, Silver, Zinc or any special finish plating as per customer specifications.



## Copper Parts



- ▶ Customized size / OEM & OES available
- ▶ 100% inspected before delivery
- ▶ Perfect quality control system
- ▶ Short production period





# ELECTRICAL COMPONENTS

## Cable Glands & Accessories



### Size :

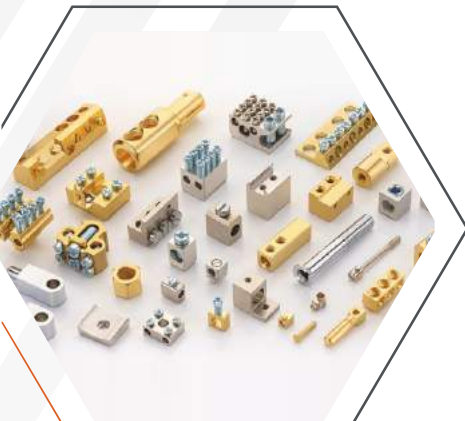
- ▶ BW2 cable gland, BW4 Cable gland
- ▶ CW3 cable gland, CW4 cable gland
- ▶ A1A2 cable gland, E1W cable gland

### Type of Cable Glands

- ▶ Single Compression Cable Gland
- ▶ Double Compression Cable Gland
- ▶ Double Compression Heavy Duty Cable Gland
- ▶ Threaded Single Compression Cable Gland
- ▶ Marine Cable Gland



## Connectors & Contacts



### Material

Brass - IS319, Free Cutting BS249, CuZn39Pb3, CW614N, CW602N, CZ132, C35330 and any brass material composition as per customer specification

### Threads

ISO metric, MM, PG, BSW, BSP, BSB, BSF, BA, NPT, MPTE, UNC, UNF, UNEF etc Any threads as per Customer's Design.

Any kind of parts can be developed and supplied exactly as per requirement.



## Switch Parts



### Applications

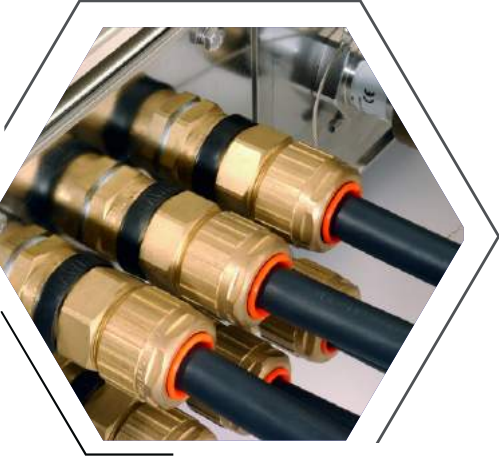
- ▶ Automobile industry
- ▶ Telecommunication industry
- ▶ Aerospace industry
- ▶ Pharmaceutical industry
- ▶ Plastic industry
- ▶ Electrical industry
- ▶ Mechanical industry
- ▶ Armored Cable Gland



**Finishing / Plating :** Brass Natural, Tin, Nickel, Silver, Zinc or any special finish / plating as per customer specifications.

# INSERT

We are the leading manufacturer of Brass threaded inserts for plastics Industries, Communication equipment, Automotive Industries, Electrical & Wiring Device Cases etc. We offer a full line of brass inserts for all methods of installation, including: **Ultrasonic, Heat, Thermal, Press-in and Mold-in.**



## Brass Inserts For

- ▶ Plastic Molding
- ▶ Plastic Components
- ▶ CPVC Pipe Fittings
- ▶ PE Fittings
- ▶ PPR Fittings
- ▶ PVC Fittings
- ▶ UPVC Fittings
- ▶ Roto Molding Inserts
- ▶ Ultrasonic Brass Inserts
- ▶ Threaded Inserts For Wood



## Knurling Available

- ▶ Diamond
- ▶ Straight
- ▶ Unidirectional
- ▶ Both blind and through inserts



## Threads

- ▶ ISO Metric (MM Threads)
- ▶ BSP & BSPT (Parallel & Taper Threads)
- ▶ NPT Thread
- ▶ BSW Threads (Inches)
- ▶ BSF Thread
- ▶ UNC, UNF, UNEF Thread
- ▶ BA Thread
- ▶ Any threads as per specifications



## Finish & Plating

- ▶ Natural Plated
- ▶ Nickel Plated
- ▶ Chrome Plated
- ▶ Tin Plated
- ▶ As per customer specifications.



\*Any kind of Brass Inserts can be developed and supplied exactly as per customer specifications.

# FITTINGS

## Fittings



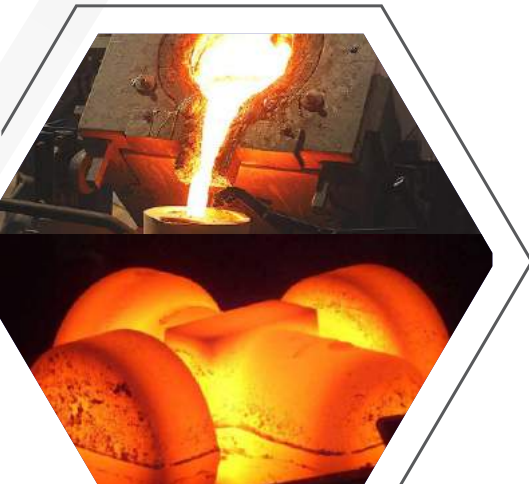
- ▶ Compression Fittings
- ▶ Bite-type Fittings
- ▶ Mechanical Grip Fittings
- ▶ Flare Fittings
- ▶ End Fittings
- ▶ Flange Fittings
- ▶ Threaded Fittings



### Industries

- ▶ Oil & Gas
- ▶ Refineries
- ▶ Chemical Industries
- ▶ Instrumentation
- ▶ Petrochemicals & Fertilizers
- ▶ Construction & Mining
- ▶ Marine
- ▶ Power Projects (Hydro, Wind, Thermal)

## Cast & Forged Parts



- ▶ Casting & Forgings up to 10 Kg.
- ▶ In-house dies and tooling manufacturing
- ▶ Rough and finish machining
- ▶ Cost optimization studies
- ▶ Quick-turnaround cost estimation

### Material

- ▶ Aluminum
- ▶ Stainless Steel
- ▶ Grey Cast Iron
- ▶ SG casting



### Industries

- ▶ Petrochemical Plants
- ▶ Mining And Mineral Processing
- ▶ Agriculture
- ▶ Water Treatment
- ▶ Aeronautics
- ▶ Automobile Industry
- ▶ Materials Handling
- ▶ Railways

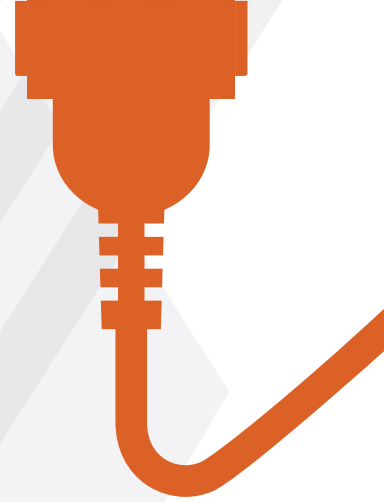




Engage ★ Performance ★ Service



“WE STAND FOR  
**QUALITY, INNOVATION AND RELIABILITY”**”



## ELITE ENGINEERING



Plot No. 3576, Bhagyoday Road, Phase 3, Dared GIDC,  
Jamnagar - 361005, Gujarat INDIA.



info.eliteengg@gmail.com, mail@elite-engg.com



+91 93281 03292, +91 91044 07174



www.elite-engg.com

