

## **Font : You Can select any font & Size**

**Below the Details need under the Automation Division Menu when click on Automation Division**

# **Automation Division**

Home > Automation Division

Yastronics has a group of dedicated and experienced professional engineers in this division. This division carryout the work to automate various production plants to PLC control system-designed for your specific and modern technology of this century. In Saudi Arabia, we can announce honestly that our team of specialists has automated most of the Ready-mix Concrete plants as well as Asphalt plants. Also some of the old model heavy mechanical machine units, water treatment plants, also small or big plants to the entire satisfaction of our clients in a highly professional way.

We Offer turnkey integrated PLC/SCADA based solutions for Batching and Continuous Processes like RO plants, Water and Waste Water Solutions, Sewage Treatment Solutions, Temperature Monitoring Systems, Factory Automation Solutions, Machine Automation Systems, Building Management Systems and in the field of Oil & Gas. We are also experienced in providing solutions in the field of Motion Control, CNC, Robotics, Vision and Imaging System, Process control and many more areas.

We distinguish ourselves by Providing well Engineered solutions with significant focus on the application software development and testing.

### **ATLAS INDUSTRIES ASPHALT PLANT DEALERSHP IN KSA**

We are Pleased to tell you that, we have taken OEM for Atlas Industries in Saudi Arabia.

We already have 100 customers in the batching Plant Line who are mainly Contracting Companies in Construction Field to build Buildings and lay down roads. So far we have completed nearly 70 Asphalt Plants and 100 Concrete Plants. But our work was mainly in the Software side which deals with supply and programming of PLC and Program and commissioning. We Will use the existing Control Panel in the Plant and we will interface our PLC Control panel and make it work with Customer required Operation Sequence

**ATLAS INDUSTRIES** is an **ISO 9001 : 2008 company** engaged in design, development, manufacturing, marketing and servicing a complete line of **Asphalt Batching Plants, Wet Mix Plant, Portable Concrete Plant, Bitumen Sprayer Distributors and Mechanical Brooms.**

**Based in Gujarat, India,** they are **road and civil construction machinery manufacturers and exporters in India.** As manufacturers of road machinery, they are the ones who offer quality road machinery and cement machinery equipments.

**ATLAS** has grown to be the market leader by being a customer-driven company. Through listening to the customers and understanding every aspect of the business, they are able to provide new products that solve problems and increase profitability.

### **ASPHALT AND CONCRETE PLANT AUTOMATION WORKS**

*Below list is the some of the Automation works we have done in Asphalt and Concrete Industries so far.*

**1. CUSTOMER : SHIBAH AL JAZIRA CONTRACTING CO.,**

**SYSTEM** Automation system for 2 Asphalt Plant in different locations (Uizah(Barber Greene) & Riyadh (WIBAU). Including supply, Installation Automation System, Calibrations and T/C of Weighing Systems ( Load Cells + Indicators), operator panels, Electronic devices etc.,

PLC Based Automation for Concrete Batching Plant. (Apha)

**2. CUSTOMER : AL OMAIR CO.,**

**SYSTEM** Upgradation of **Marini Asphalt** Plant in DAMMAM. The work consisting of supply Installation of Siemens S7-1500 PLC and Programming and Commissioning of Complete Asphalt Plant in Dammam. And **6 Concrete Batching Plants** Automation in Different Locations (Al Kharji, Dammam, Zulfi, Majmah, Shakra and Al Jouf).

**3. CUSTOMER : A1-Ayuni for Trading & Contracting (Southern Region)**

- SYSTEM** : Upgrading **4 Asphalt Plant & 4 Concrete Batching** plants in different locations. The work consisting of supply Installation, Calibrations and T/C of Weighing Systems ( Load Cells + Indicators), Heating System, Material Conveyors, and protection equipment like motor speed controller with all Electrical main & operator panels, Electronic devices etc.,
- 4.CUSTOMER :** **GANTOOT ROAD DIVISION,UAE**
- SYSTEM** : Upgradation of 2 **Marini Asphalts Plant in UAE**
- The work consisting of supply Installation, Calibrations and T/C of Weighing Systems ( Load Cells + Indicators) and protection equipment like motor speed controller
- With all electrical main & Operator panels, Electronic devices and Automation of Complete Asphalt Plant
- 5. CUSTOMER :** **KBAS CONTRACTING,QATAR**
- SYSTEM** : Upgradation of **Marini Asphalt Plant in Qatar.**
- The work consisting of supply Installation, Calibrations and T/C of Weighing Systems ( Load Cells + Indicators) and protection equipment like motor speed controller
- With all electrical main & Operator panels, Electronic devices and Automation of Complete Asphalt Plant
- 6. CUSTOMER :** **BUGSHAN ARABIA GROUP,TAIF**
- SYSTEM** : Upgradation of **Cesan Asphalt Plant** in TAIF.
- The work consisting of supply Installation of Siemens S7-1200 PLC and Programming and Commissioning of Complete Asphalt Plant in Taif.
- 7. CUSTOMER :** **AL OWaidha CO.,**
- SYSTEM** Automation system for 2 Asphalt Plant in Hail and Al Qassim.
- 8. CUSTOMER :** **UNIMAC,**
- SYSTEM** Automation system for **4 Asphalt Plant** in different locations (Rumah, Prince Noora University). Including supply, Installation,

9. CUSTOMER :	Al Fahad Co (Asphalt Div),
SYSTEM	Automation system for 3 Asphalt Plant in different locations (2 in Tabuk & 1 Ruma(Riyadh). Including supply, Installation, Calibrations and T/C of Weighing Systems ( Load Cells + Indicators), operator panels, Electronic devices etc.,
10. CUSTOMER :	Al Harbi Trading Co.
SYSTEM	Automation system for 1 Asphalt Plant (Barber Greene) in Madina. Including supply, Installation, Calibrations and T/C of Weighing Systems ( Load Cells + Indicators), operator panels, Electronic devices etc.,
11. CUSTOMER :	ZAID SAUD CONT EST.
SYSTEM	Automation system for 1 Asphalt Plant (WIBAU) in Shaqra. Including supply, Installation, Calibrations and T/C of Weighing Systems ( Load Cells + Indicators), operator panels, Electronic devices etc.,
12. CUSTOMER :	BIN SAMMAR (Banban Asphalt Plant),
SYSTEM	Automation system for SPECO Asphalt Plant in Banban.  The system controls the weighing and the batching of the Asphalt mix and provides daily & monthly detailed reports.
13. CUSTOMER :	HARD STONE READY MIX
SYSTEM	: PLC Based Automation for 4 Concrete Batching Plants. The system controls the weighing and the batching of the concrete mix and provides daily & monthly detailed reports.

- 14. CUSTOMER :** **MUDAIFR READYMIX DIV (OMRANIYA)**
- SYSTEM :** PLC Based Automation for 4 Concrete Batching Plants.  
The system controls the weighing and the batching of the concrete mix and provides daily & monthly detailed reports.
- 15. CUSTOMER :** **LCCSIPOREX**
- SYSTEM :** Automation for their Pre-cast concrete operations (PC Based)
- 16. CUSTOMER :** **AL RASHED ASPHALT PLANT (RIYADH)**
- SYSTEM :** **Complete Automation for AMMAN Plant DELTA PLC** Based  
Automation System for one Asphalt Batching plant
- 17. CUSTOMER :** **Al Fahad Co.,**
- SYSTEM :** PLC Based Automation for 4 Concrete Batching Plants.  
The system controls the weighing and the batching of the concrete mix and provides daily & monthly detailed reports.
- 18. CUSTOMER :** **MOON CONTRACTING CO. HAIL**
- SYSTEM :** Upgradation of **2 Asphalt** Plant in HAIL.  
The work consisting of supply Installation of DELTA PLC and Programming and Commissioning of Complete Asphalt Plant.

### **Asphalt Plant SCADA Screen**

Sunday, July 31, 2016 1:00:21 PM

# ASPHALT BATCHING AUTOMATION SYSTEM

Sl.No.	211	Date	31/07/2016	12:57:08 PM	Remark		Customer	1	GHANTOOT R	Truck No.	
MixDesign	4	B/C		Order	500.0	Tons	15.0	Batch	Balance	11.0	Batch Mixing 1.0
										Tot.Weight	2300
<input type="button" value="SAVE"/>											

<input type="button" value="MAIN"/>	<input type="button" value="ORDER"/>	<input type="button" value="CONFORM"/>	<input type="button" value="Repeat Order"/>	<input type="button" value="Manual"/>	<input type="button" value="PAUSE"/>	<input type="button" value="Start"/>	<input type="button" value="Cancel"/>	<input type="button" value="BACK"/>
-------------------------------------	--------------------------------------	--	---	---------------------------------------	--------------------------------------	--------------------------------------	---------------------------------------	-------------------------------------

Plant Auto Mode ☒ Plant Ready ☒

Last Mix Report

Print By Delivery No.

Last Mix Report

Next Batch Hold

Ind Batch

## AGGREGATE

Bin 1	Bin 2	Bin 3	Bin 4	Bin 5	Bin 6
333	510	487	821	0	0
14	22	21	36	0	0

## FILLER

66.7 0.0

2.9

66.7 66.7

65.2 65.3

## BITUMEN

80.5

3.5

80.5

81.4

Exhaust %

10

Burner %

35

Discharge Hold

Mixer Hold

TEMP. 183.0 C

Skip Mode

Mixing Time 24.0 17

Gate Open 4.0

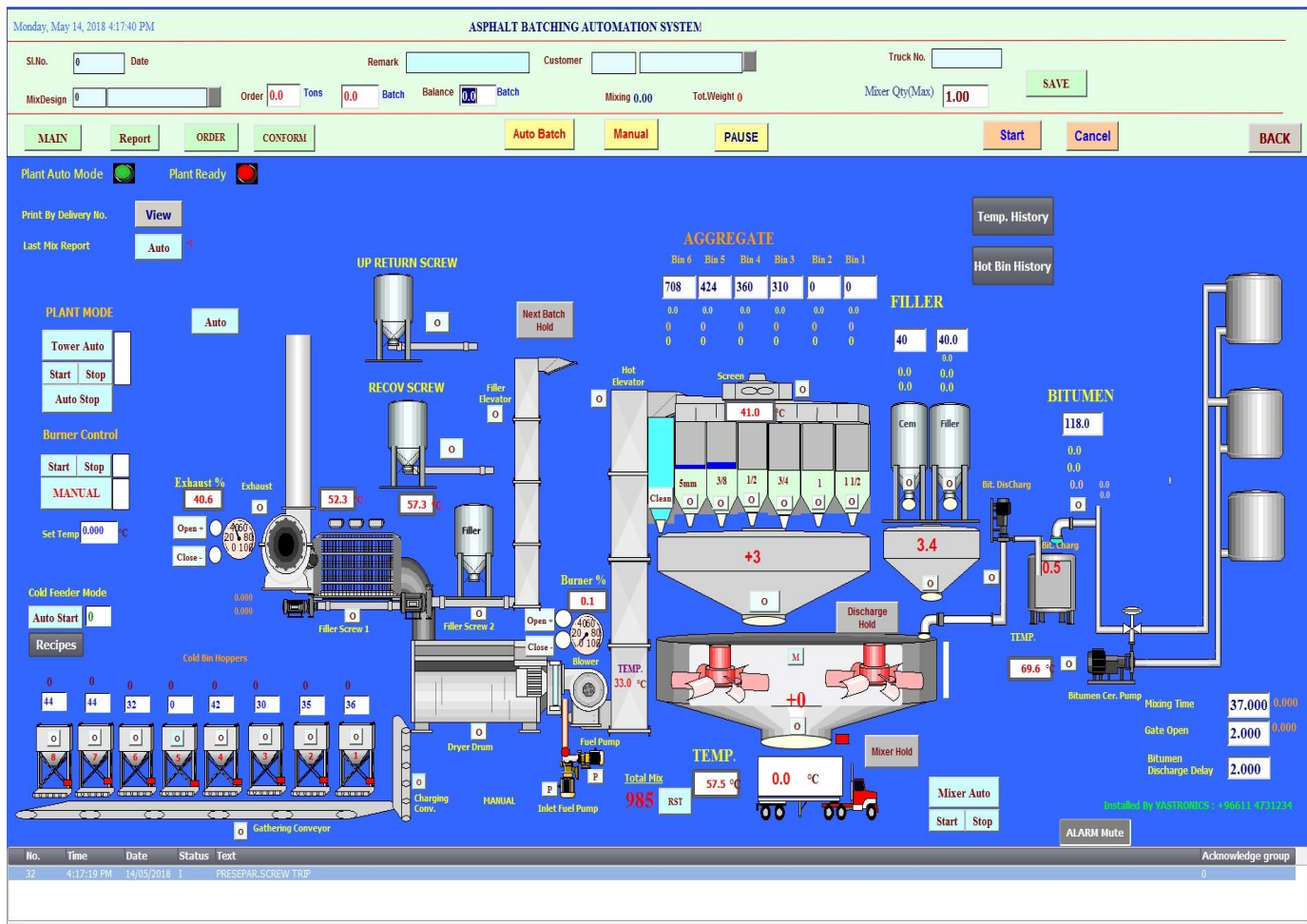
Bitumen Discharge Delay 1.3

Total Mix

19

RST

Installed By YASTRONICS - 096611 4731234



**Batching Plant SCADA Screen**

Date:                      Time:                      **Mixer - 1 & 2**                      Thursday, December 22, 2016 3:15:49 PM

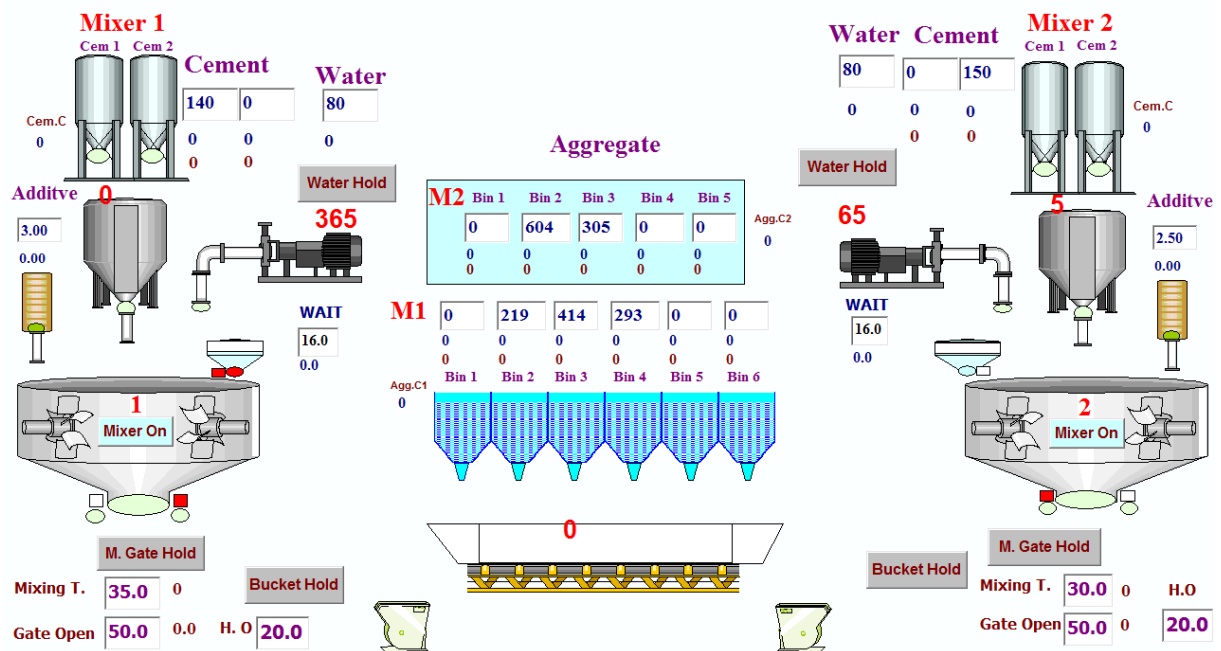
	Sl.No.	MixDesign	Order Qty	B.Qty	Agg-1	Agg-2	Agg-3	Agg-4	Agg-5	Agg-6	Cem-1	Cem-2	Water	Mix Qty	Refrence	
<b>M1</b>	0	0		0.00	0.00	0	219	414	293	0	0	140	0	80	0.00	
<b>M2</b>	0	0		0.00	0.00	0	604	305	0	0	0	150	80	0.00		

Customer - M1                      **Main**                      Customer - M2

Order M1    Conform M1                      Order M2    Conform M2

Start    Cancel    Auto    Mix Report Mixer 1    View    Mix Report Mixer 2    View    Auto    Cancel    Start

Manual    PAUSE                      PAUSE    Manual



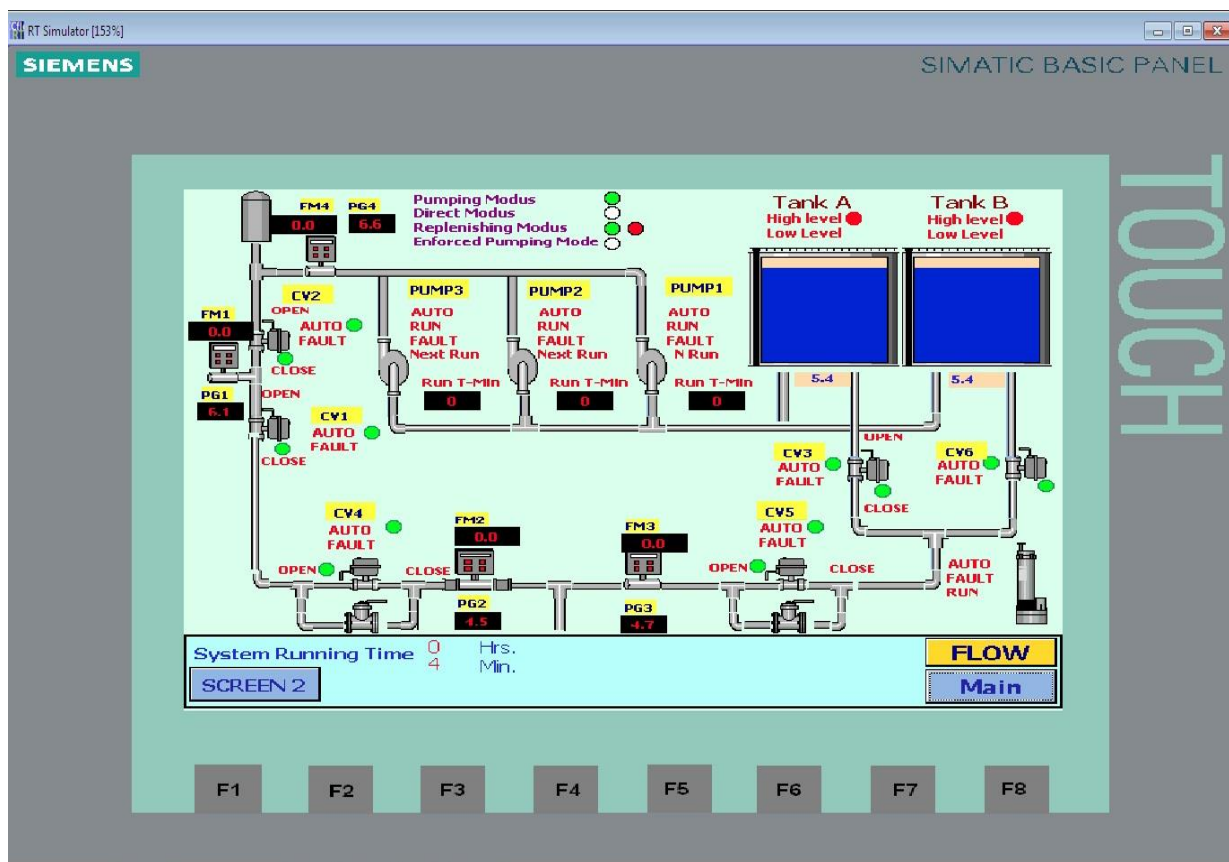
**WATER PROJECTS:**



1. CUSTOMER : Ar-Riyadh Development Authority – DQ (Diplomatic Quarter, Riyadh, Riyadh

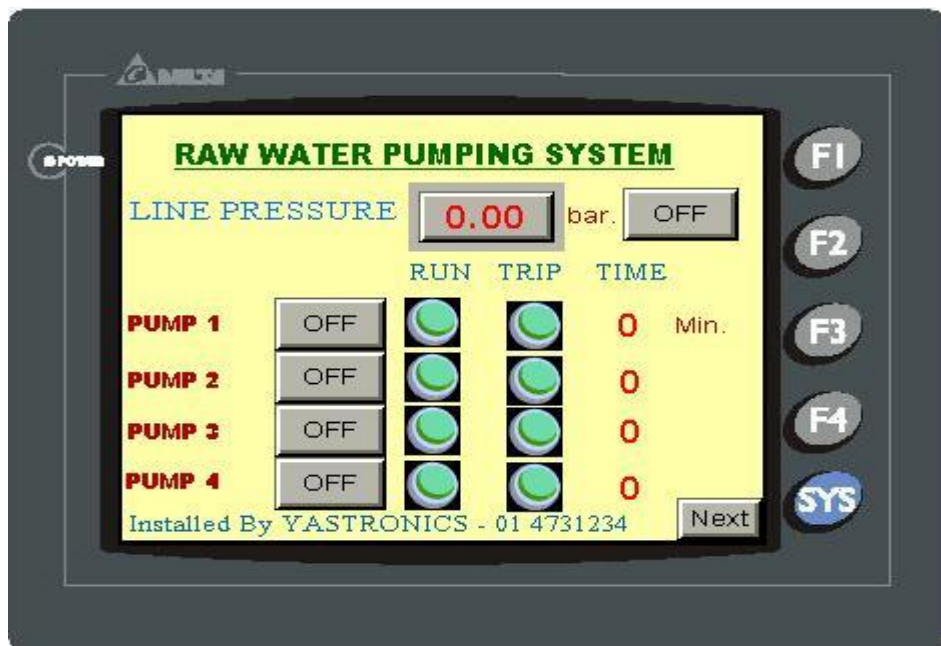
**SYSTEM Upgrading of Existing Potable Network – Reservoir and Pumping Station in Area “A”**

Using With Siemens S7-300 PLC & Siemens HMI Touch Panel Automation System.

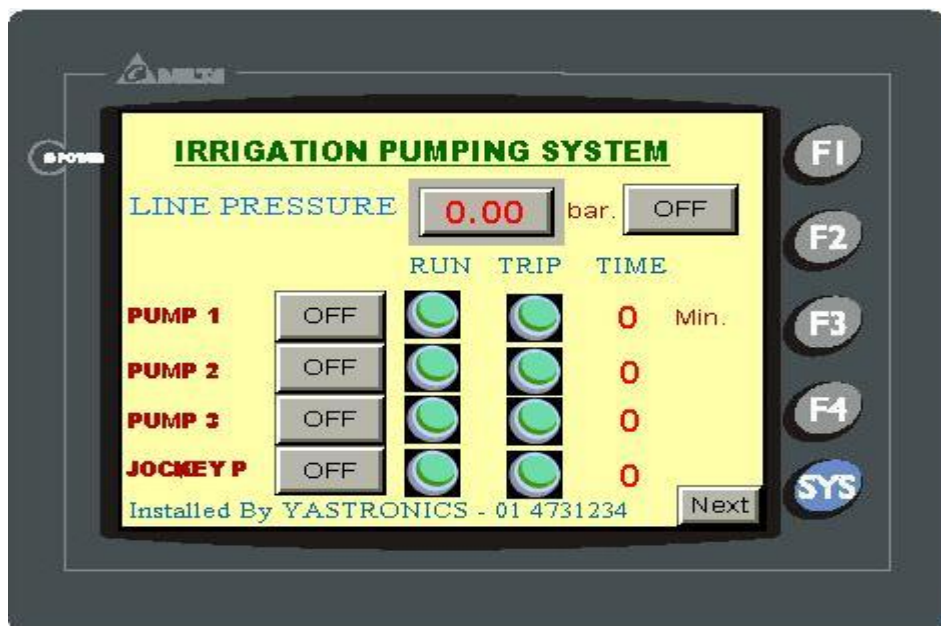


2. CUSTOMER : Equestrian Club Jandriay., Riyadh

**SYSTEM** 1. Automatic Drinking Water Distribution Pumping System with Delta PLC & Delta HMI Screen



2. Automatic Irrigation Water Distribution Pumping System with Delta PLC & Delta HMI Screen



3. CUSTOMER : Saudi Arabian Monitoring Agency (SEDER)

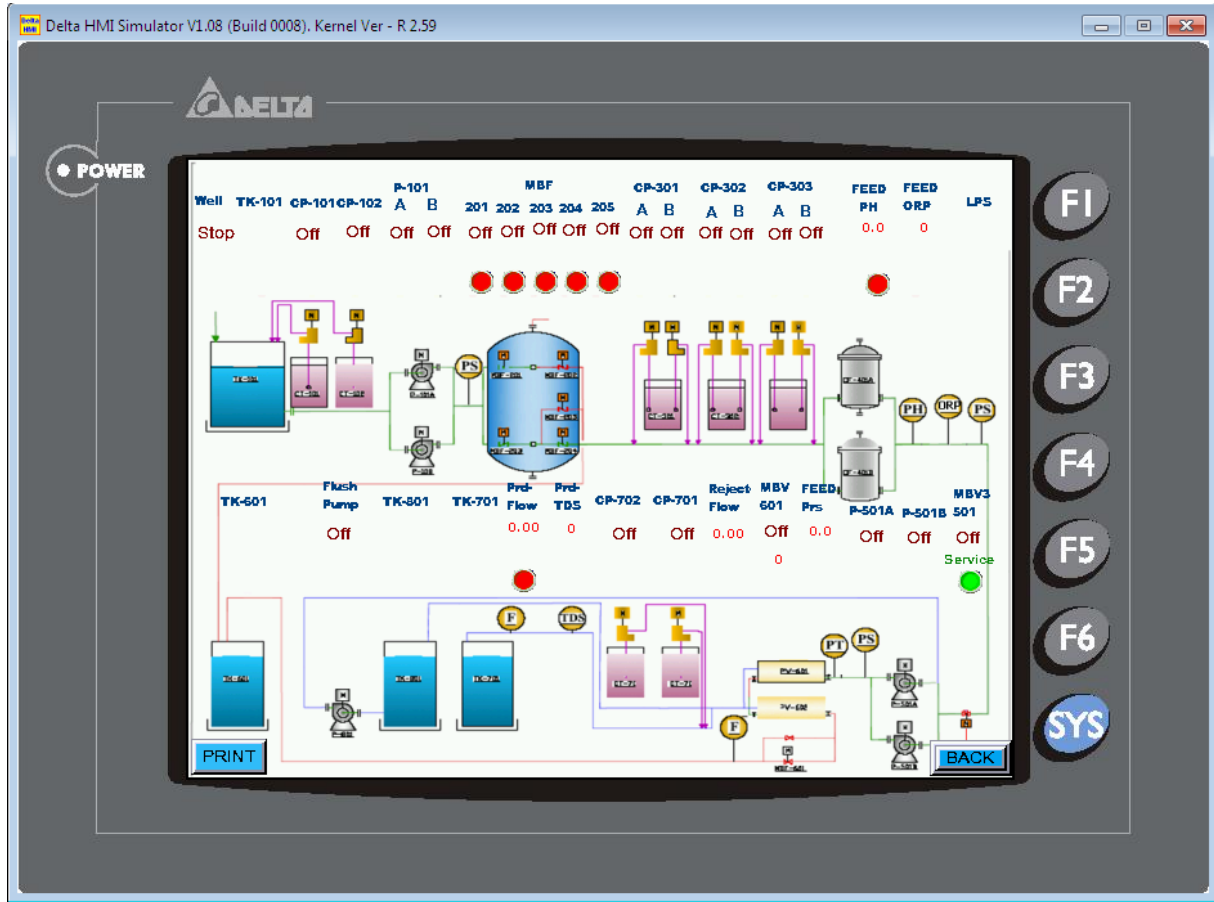
SYSTEM

1. Automatic Drinking Water Distribution Pumping System with Siemens PLC
2. Automatic Fire Fighting Water Pumping System with Siemens PLC.

4. CUSTOMER : Water & Power Engineering, Riyadh

## SYSTEM

Portable RO Plant Automation with Delta PLC & Delta HMI Screen.



5. CUSTOMER : (SELCO ) Rawdha al Kuraim King Abdullah Palace

SYSTEM 2 : Summing Pool Jacuzzi Auto Control System Using with Siemens S7-300 PLC and HMI Screen

6. CUSTOMER : (SELCO ) Arga Prince Mohamed Bin Salman Palace

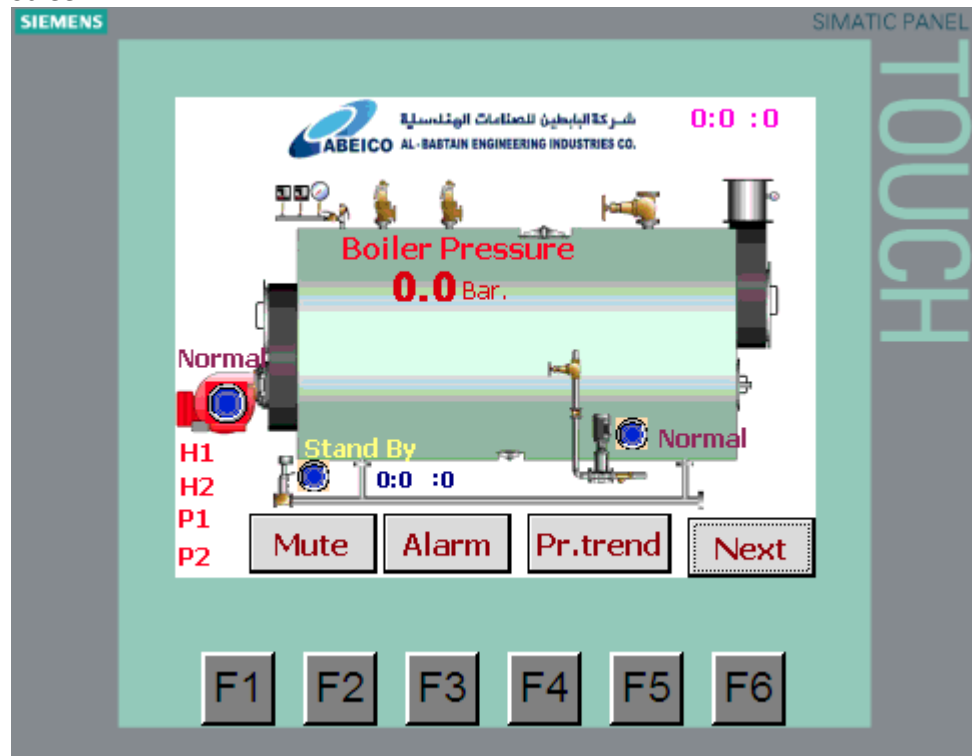
SYSTEM 3 : Summing Pool Jacuzzi Auto Control System Using with Siemens S7-300 PLC and HMI Screen

## OTHER PROJECTS

- 1. CUSTOMER :** **PETROMIN OIL CORPORATION. – Riyadh Plant,**  
Automation system for 200 Ltr Oil Drum Filling 4 Lines with Siemens S7-300 PLC
- 2. CUSTOMER :** **Al Jomiah Shell Oil. – Riyadh Plant,**  
**SYSTEM - 1** Automation system for 200 Ltr Oil Drum Manufacturing Plant with Siemens S7-200 PLC  
**SYSTEM - 2** Automation system for 4 Ltr. Oil Can Packing Machine Line with Siemens S7-300 PLC
- 3. CUSTOMER :** **Saudi Arabian Monitoring Agency(SADAR) – Riyadh.**  
Money Museum Currency Display System Using Delta PLC– 8 Unit
- 4. CUSTOMER :** **Mamlaka Food (Sulatan Chocolate).**  
3 Layer Filling Chocolate Making Line including Heaters and Chillers using Siemens PLC System
- 5. CUSTOMER :** **AL-BABTAIN INDUSTRIES - TOWER FACTORY**  
**SYSTEM :** Supply, Installation & Commissioning of a Tensile Testing System with accurate results and graphical printout
- 6. CUSTOMER :** **SAUDI SAND LIME CO., (S.S.L.B)**  
**SYSTEM :** Material Handling System for Killen Plant .  
Complete Control system for Hydraulic block making for 2 press machine.
- 7. CUSTOMER :** **NAJD CLAY BRICK,QASSIM**  
**SYSTEM :** Automation of brick Transport car.  
Complete Automatic Sequence of Brick Transport car into the respective line and monitoring of Temperature using Siemens And Delta PLC.

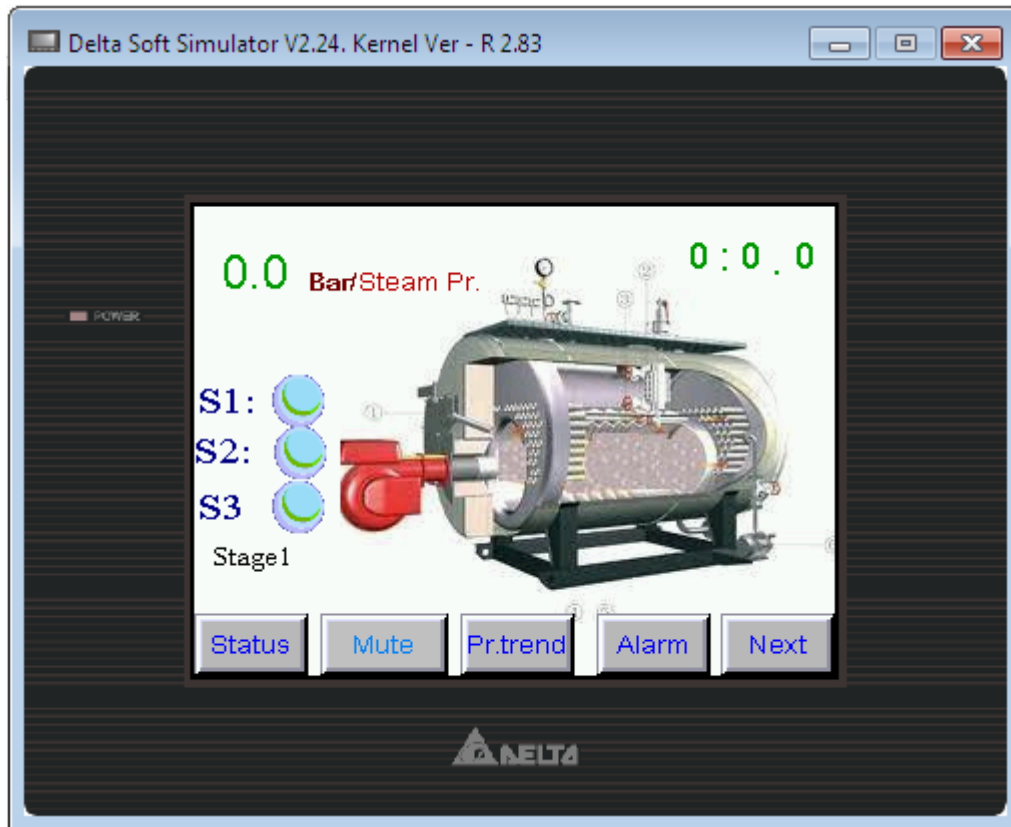
**8. CUSTOMER : Al Babtain Boiler Factory.**

- We Developed Special 4 Unit PLC Based Boiler Control System for Al Babtain Boiler Customer ARASCO, This System using with Siemens S7 PLC with Siemens HMI Touch Screen.



**8. CUSTOMER : Al Shahir Boiler Factory.**

- We Developed Special PLC Based Boiler Control System for Al Shahir Boiler, This System using for their PLC Based manufacture Unit.



9. CUSTOMER : ALKA Boiler (World Boiler Factory).

- We Developed Special PLC Based Boiler Control System for ALKA Boiler, This System using for their PLC Based manufacture Unit.

**This list is only a part of our clients. There are much more & more**