



# ELECTRO POLES PRODUCTS PVT. LTD.

AN ISO 9001 : 2015 CERTIFIED COMPANY



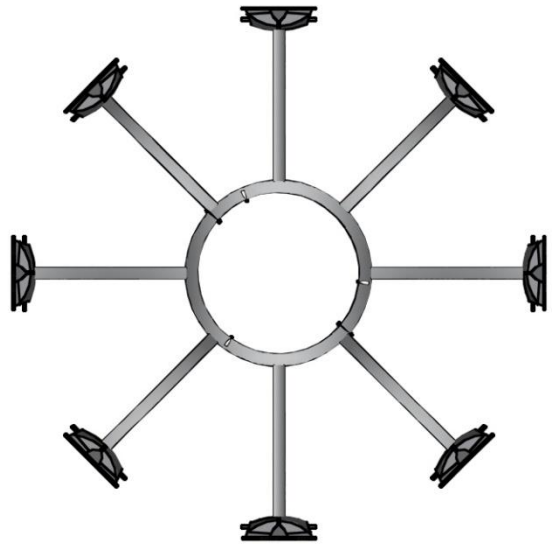
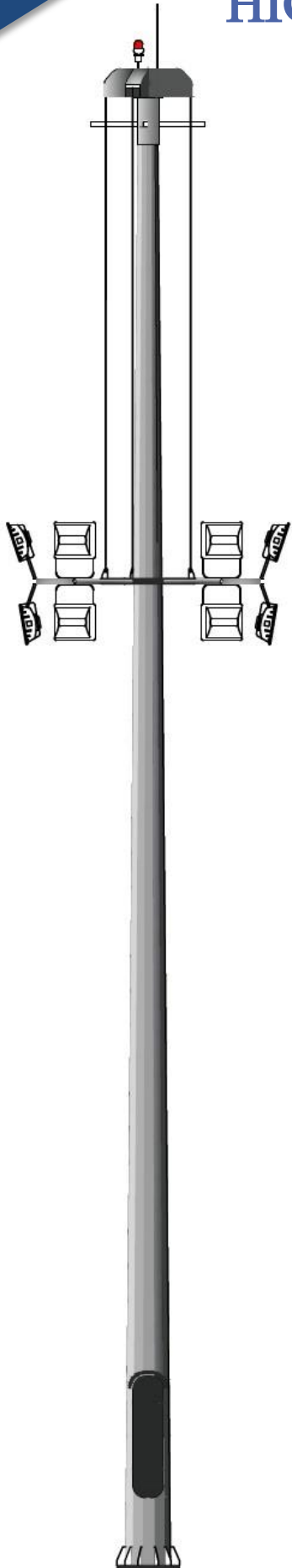
JAS-ANZ



ISO 9001:2015  
CERTIFIED

## HIGH MAST POLES

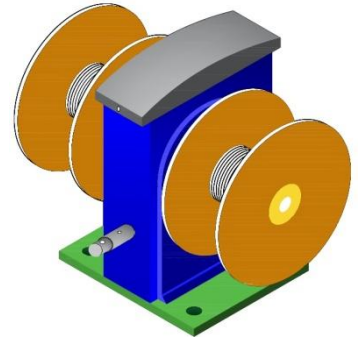
# HIGH MAST PARTS



LANTERN RING



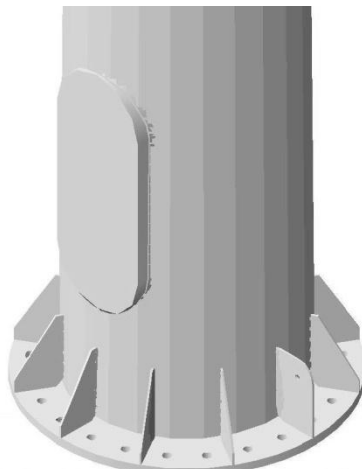
HEADFRAME



WINCH



FOUNDATION BOLT



MASTBOTTOM

**STANDARD SPECIFICATION FOR HIGH MAST AS PER 180 KMPH OR 50 M/S OR 112 MILES/HR.**

Designation of MAST (Heavy)	Mast Height Mtr.	No. Of Section	Section Thickness mm.	Dia(A/F) mm.		Base Plate mm. OD X Thk.	PCD mm.	Foundation Bolt Details			No of Lights
				Top Dia	Bottom Dia			Dia mm.	Length mm.	No of Bolts	
EPHM-12.0	12.0	1	4	150	340	540X20	440	M24	750	6	6
EPHM-12.0	12.0	2	3,3	150	340	540X20	440	M24	750	6	8
EPHM-12.5	12.5	2	3,3	150	360	560X20	460	M24	750	6	6
EPHM-16.0	16.0	2	3,3	150	360	560X20	460	M24	750	8	8
EPHM-16.0	16.0	2	3,4	150	360	560X20	460	M24	750	8	12
EPHM-20.0	20.0	2	3,4	150	410	610X20	510	M24	850	12	8
EPHM-20.0	20.0	2	3,4	150	410	610X20	510	M24	850	12	12
EPHM-20.0	20.0	2	3,4	150	410	610X20	510	M30	1200	10	16
EPHM-25.0	25.0	3	3,4,4	150	410	610X25	510	M30	1200	12	12
EPHM-25.0	25.0	3	3,4,5	150	460	660X25	560	M30	1200	12	16
EPHM030.0	30.0	3	4,4,5	150	560	760X25	660	M32	1200	16	16
EPHM030.0	30.0	3	4,5,5	150	610	810X25	710	M32	1200	20	20

**STANDARD SPECIFICATION FOR HIGH MAST AS PER 160 KMPH OR 44 M/S OR 100 MILES/HR.**

Designation of MAST (Medium)	Mast Height Mtr.	No. Of Section	Section Thickness mm.	Dia(A/F) mm.		Base Plate mm. OD X Thk.	PCD mm.	Foundation Bolt Details			No of Lights
				Top Dia	Bottom Dia			Dia mm.	Length mm.	No of Bolts	
EPHM-12.0	12.0	1	4	105	340	540X20	440	M24	750	6	6
EPHM-12.0	12.0	2	3,3	105	340	540X20	440	M24	750	6	8
EPHM-12.5	12.5	2	3,3	105	360	560X20	460	M24	750	6	6
EPHM-16.0	16.0	2	3,3	105	360	560X20	460	M24	750	8	8
EPHM-16.0	16.0	2	3,4	105	360	560X20	460	M24	750	8	12
EPHM-20.0	20.0	2	3,4	150	410	610X20	510	M24	850	12	8
EPHM-20.0	20.0	2	3,4	150	410	610X20	510	M24	850	12	12
EPHM-20.0	20.0	2	3,4	150	410	610X20	510	M30	1200	10	16
EPHM-25.0	25.0	3	3,4,4	150	410	610X25	510	M30	1200	12	12
EPHM-25.0	25.0	3	3,4,5	150	460	660X25	560	M30	1200	12	16
EPHM030.0	30.0	3	4,4,5	150	460	660X25	560	M32	1200	16	16
EPHM030.0	30.0	3	4,5,5	150	510	710X25	610	M32	1200	20	20

**STANDARD SPECIFICATION FOR HIGH MAST AS PER 120 KMPH OR 33 M/S OR 75 MILES/HR.**

Designation of MAST (Light)	Mast Height Mtr.	No. Of Section	Section Thickness mm.	Dia(A/F) mm.		Base Plate mm. OD X Thk.	PCD mm.	Foundation Bolt Details			No of Lights
				Top Dia	Bottom Dia			Dia mm.	Length mm.	No of Bolts	
EPHM-12.0	12.0	1	4	105	340	540X20	440	M20	750	6	6
EPHM-12.0	12.0	2	3,3	105	340	540X20	440	M20	750	6	8
EPHM-12.5	12.5	2	3,3	105	360	560X20	460	M20	750	6	6
EPHM-16.0	16.0	2	3,3	105	360	560X20	460	M20	750	8	8
EPHM-16.0	16.0	2	3,4	105	360	560X20	460	M20	750	8	12
EPHM-20.0	20.0	2	3,4	150	410	610X20	510	M24	850	12	8
EPHM-20.0	20.0	2	3,4	150	410	610X20	510	M24	850	12	12
EPHM-20.0	20.0	2	3,4	150	410	610X20	510	M30	1200	10	16
EPHM-25.0	25.0	3	3,4,4	150	410	610X25	510	M30	1200	12	12
EPHM-25.0	25.0	3	3,4,5	150	460	660X25	560	M30	1200	12	16
EPHM030.0	30.0	3	4,4,5	150	460	660X25	560	M30	1200	16	16
EPHM030.0	30.0	3	4,5,5	150	510	710X25	610	M30	1200	20	20

**APPLICABLE STANDARDS**

**ACCESSORIES**

**APPLICATIONS**

Title	Code
General Construction of Steel	IS 875 (PART III) 1987
Wind Load for Structures	IS 800 2007
Grades of Steel	BSEN 10025/ BIS 2062
Foundation Bolt Material	Gr Fe-415 MpaMin
Base Plate Material	BIS 2062
Galvanizing	IS 4759
Galvanization Thickness	70 - 86 Micron (Average)
Lantern Carriage capacity	300 Kg to 1000 Kg

Lantern Carriage
Head Frame
Motor & Winch Mounting Bracket
Lightning Arrester
Winch- Double/Single Drum
Stainless Steel Wire Rope
Power Tool
Trailing Cable

1. Air Ports & Sea Ports
2. Railway Yards
3. Industrial Flood Lighting
4. Car Parks & Junctions
5. Sports Arenas/Stadiums
6. Roads & Highway

- Electro Poles Products Pvt. Ltd.(EPPPL) was incorporated in the year 2007. We are basically ISO 9001:2008 Certified company & our factory is based in Dankuni, Dist-Hooghly near Mother Dairy Gate No 3 (Blue Heaven Hotel) based in Eastern India. We have professional & experienced workers working with us since inception of the company. Our factory is mostly modernised & we have state of art equipments & machineries for execution of the products. We also have a highly quality control procedure within the factory.
- You can depend on EPPPL's high quality Galvanized Steel poles for an appealing solution to your roadways & Street lighting needs. We offer Octagonal/ Polygonal shaped tapered Poles, Decorative brackets & accessories. Refer overleaf for the standard product range & specification. EPPPL also supplies galvanized & powder coated poles and brackets for decorative appearance & aesthetics.
- Meeting the needs of you , our customer is top priority no matter how large or small your order whether its a standard product or specifically designed to meet your requirements our focus is to provide a quality product on time and per agreed standards.
- We are reliable partner for your lighting needs.
- We also supply :
  - Customize / Decorative Lighting Poles/Brackets
  - High Masts for area illumination
  - Sports Lighting Poles/ Stadium Masts
  - Monopoles / Transmission Poles



Reg. Office:1-B, Ramlochan Mullick Street ,1st Floor, Room No. 105, Kolkata - 700073,  
Marketing Office:Eco Suite Tower, Plot II - D/22, Action Area II, 6th Floor ,Suite No : 607,  
(Near City Centre II) , Kolkata - 700156, West Bengal, India .

Work Unit 1 : Mother Dairy Gate No.3, P.O. Dankuni Coal Complex , Dankuni, Hooghly.  
Work Unit 2 : Santra para , village : Khariyal , P.O. Dankuni Coal Complex , Dankuni , Hooghly.  
Work Unit 3 : NH2, Pardankuni, Dankuni, Hooghly.  
Trade Enquiry No : +91-9874245900 / 9903915900

Email : [info@electrogroups.com](mailto:info@electrogroups.com)

Web : [www.electrosteelproducts.com](http://www.electrosteelproducts.com)

Mr. Ujjal Saha (Sales & Marketing) , Ph: +91-9874245530