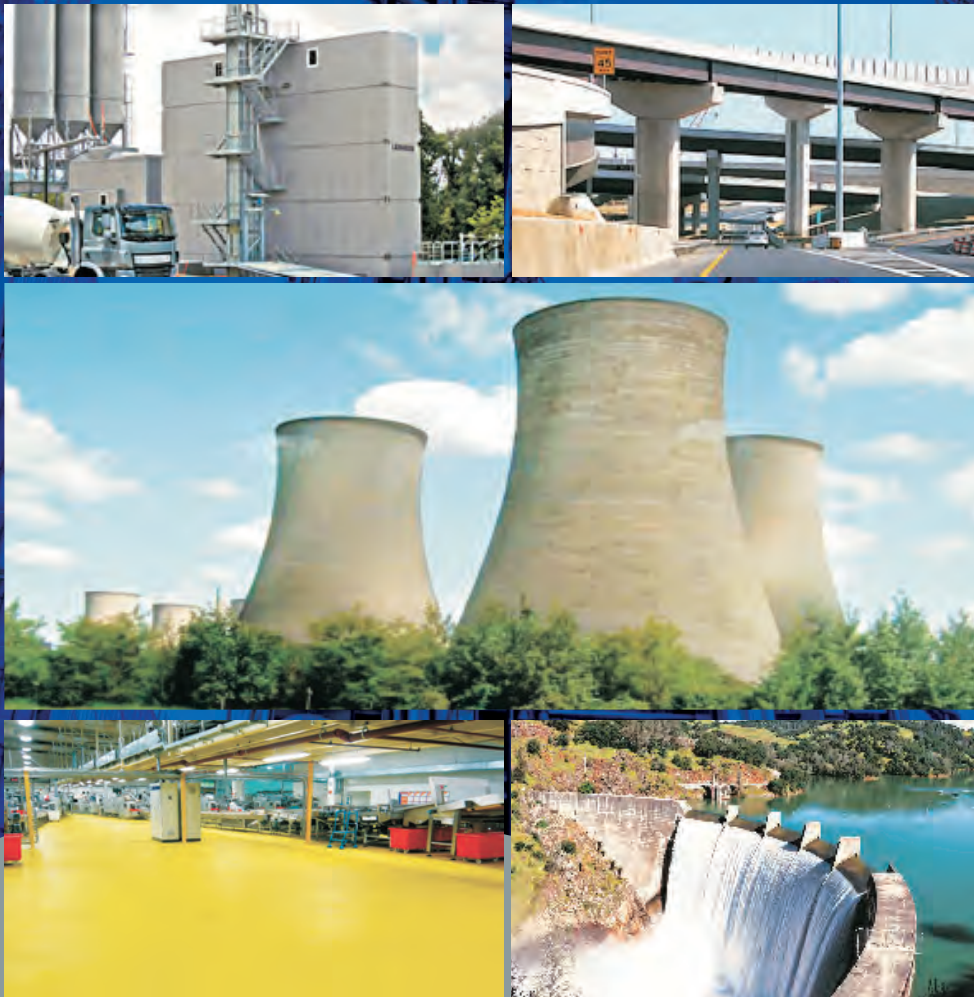


# Construction Chemicals & Flooring Solutions

Plasticity • Strength • Protection



PROTECTION IS ON WITH PROTECTON





## Undisputed Leader in the High Performance Protective Coatings Segment

Berger Protecton has been the undisputed leader in India's high performance coatings segment for over 50 years. Protecton's sustained leadership is driven by its deep commitment to introducing innovative products, strict focus on quality, continuous in-house R&D and technology tie-ups with global leaders.

Protecton's wide range of formulations have earned national and worldwide recognition. They stand up to the most aggressive conditions and cater to varied substrates - Ferrous, Non-Ferrous, Concrete as well as Composites.

The Core industrial and infrastructural sectors catered to by Protecton include Nuclear and Thermal Power, Irrigation, Chemicals, Oil & Gas, Refineries, Petrochemicals, Pharmaceuticals, Hospitals, Metro Stations, Railways, Stadiums, Flyovers & Bridges, Roads, Airports, Ports and Marine vessels.

Protecton Consultancy is a turnkey source of protective consultancy and technical support that adds value for end users and engineering consultants. From project conception onward through commissioning and maintenance, the services are delivered by a dedicated team of Consultants, Service Engineers and Site Executives as well as NACE and SSPC certified inspectors.



### SCOPE OF USE

- Structural Members
- Pipelines
- Equipment
- Vessels
- Tanks & Reservoirs

### SERVICE CONDITIONS

- Underground
- Above ground
- Underwater
- High Temperatures
- Cryogenic Temperatures
- Immersion conditions
- UV exposure
- Chemical splash & spillage zones

### COATINGS RANGE

- Alkyds, Epoxies, Inorganic Zinc, Polyurethanes, Poly-siloxanes
- Tank Internal & External Coatings - Amide / Amine cured, Solventless, Novolac cured Epoxies
- Pipe Coatings - Gas Pipeline Internal, WRAS approved for potable water, Epoxy & Bituminous Coatings
- Universal Primers & Mono Coats / DTM in Alkyds, Epoxy & Polyurethanes
- Quick Drying Coatings in Alkyds, Epoxy & Polyurethanes
- Flow Coatings for hard to reach areas like Transformer Radiator Fins
- Cryogenic Coatings & Epoxy Coatings for Corrosion Under Insulation areas
- Fire Proofing Coatings (Intumescent & Vermiculite based)
- Road Marking Coatings (Airport, Road & Kerb) / QD WB Lane Markings / Cycle Track Coatings
- Can Coatings for drums and packing containers
- Antifouling Coatings for wood, fibreglass, steel trawlers and fishing boats
- Concrete Coatings - Wet Surface Epoxy Coatings for NDFT Concrete structures, Coatings for Effluent Treatment plants
- Anti-carbonation, Clean Room Coatings & Floor Coatings

Disclaimer : Photographs used in this brochure are from various sources and are only indicative of possible usage areas etc.





**Anti-corrosive Coatings**



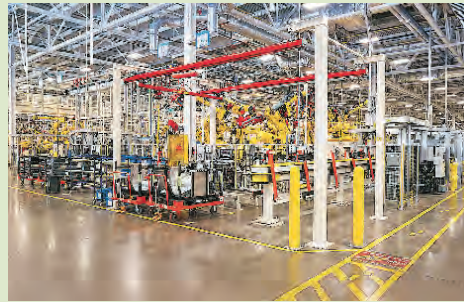
**CUI & HR Coatings**



**Anti-carbonation & Concrete Coatings**



**UV & Weather Resistant Coatings**



**Chemical Resistant Coatings**



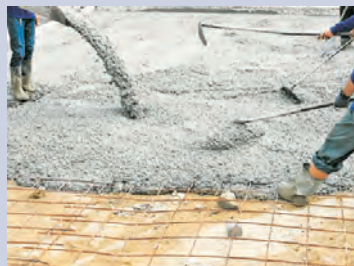
**Food Grade Pipe Internal Coatings**



**Passive Fireproof Coatings**



**Immersion Services Coatings**



## **BERGER (HOME) SHIELD**

WATERPROOFING SPECIALIST

A new thrust area for Protecton is in the field of Construction Chemicals. Berger's Home Shield range of Construction Chemicals cater to the requirements of today's wave of better and advanced constructions in the residential, industrial, and commercial sectors. The range offers a multifaceted range of Admixtures, Surface Treatment compounds, Adhesives & Repair Agents, Grouts, Sealants and Waterproofing products.

Protecton also offers builders a range of Floor Coatings systems that bring aesthetics and longevity to hard-working floors and walls in industrial and public buildings – including Food & Beverage units as well as Pharmaceuticals and Hospitals.



## Admixtures

Admixtures enhance properties of concrete by increasing the durability, increasing workability, reducing water content, improving pumpability, accelerating or retarding the initial setting time and improving finishability.

Brand Name	Product Profile
HS Procem	<b>Air Entraining Admixture</b> – with increased resistance to freeze-thaw degradation, increased cohesion and improved compaction.
	<b>Anti-Freeze Admixture</b> – for cold weather concreting ( $-4^{\circ}\text{C}$ ), it lowers the freezing point and increases the rate of early strength development.
	<b>Chloride-Free Accelerator Admixture</b> – for accelerating the initial setting time of concrete. It provides a degree of water-reduction and is safe for use in reinforced concrete.
	<b>Accelerator Admixture</b> – for increasing the rate of hardening and providing high early strength in cold temperatures.
HS Proplast	<b>Water-reducing Admixture</b> – complies with Type A in ASTM C 494. It reduces water requirement by upto 12% and increases the workability and strenght of concrete.
	<b>Retarder Admixture</b> – complies with Type B in ASTM C 494. It slows the initial setting time of concrete; and is used for complex structures, and where temperature is high.
	<b>Water-reducing cum Retarder Admixture</b> – complies with Type D in ASTM C 494. It gives higher compressive strength by lowering the water : cement ratio and increasing the workability of concrete.
HS Pro Superplast	<b>Superplasticiser Admixture</b> – complies with Type F in ASTM C 494, with highly effective water reducing properties upto 25%; and provides free flowing concrete.
	<b>Superplasticiser cum Retarder Admixture</b> – complies with Type D & G in ASTM C 494. It is highly effective in reducing water requirement upto 25%; and provides free flowing concrete with controlled extension of setting time.
HS Pro Hyperplast	<b>Superplasticiser Admixture</b> – complies with Type F in ASTM C 494. A high end super plasticiser that facilitates extreme water reduction upto 40%; with excellent flowability, and at the same time optimal cohesion.
	<b>Superplasticiser cum Retarder Admixture</b> – complies with Type G in ASTM C 494. A high end super plasticiser that facilitates extreme water reduction upto 40%; excellent flowability, and at the same time optimal cohesion and controlled extension of setting time.







## Surface Treatment

Forming a membrane over green concrete, Curing Compounds prevent moisture loss to ensure proper curing and development of strength and durability of concrete. The abrasion resistant membrane eases removal of formwork to significantly enhance aesthetics and service life.

Brand Name	Product Profile
HS ProSlip WB	<b>Water Based Mould Release Agent</b> – provides effective solution in processes involving mold release, die-cast release, plastic release, adhesive release etc.
HS ProCure	<b>Water Based Aluminized Curing Compound</b> – sprayed on newly laid concrete for prevention of premature water loss – with water retention efficiency index >90%.
	<b>Aluminized Synthetic Resin Based Curing Compound</b> – conforms to ASTM C309-81, Type-2 and BS 7542 – for the prevention of premature water loss from concrete, with water retention efficiency index >90%.
	<b>Emulsified Paraffin Wax Based Curing Compound</b> – complies with ASTM C309-81, Type-2, Class-A – a ready to use, liquid curing compound to prevent premature water loss from concrete and mortar.
	<b>Acrylic Copolymer Based Curing Compound</b> – complies with ASTM C309-81, Type-2, Class-A – a white coloured, ready to use, liquid curing compound to prevent premature water loss from concrete and mortar.



## Adhesives & Repair

Adhesives that display good bonding between old and new concrete, precast segments etc. They enhance inter-bonding properties for a variety of materials used in the construction industry, and also ensure durability, stability and strength of structures.

Repair materials that ensure durable rehabilitation of concrete deterioration that may occur due to use of substandard materials, or due to corrosion, water ingress, seismic activity etc.

HS ProEpibond	<b>Epoxy Based old to new Concrete Bonding Agent</b> – two component solvent free epoxy bonding agent supplied in pre-weighed quantities for ready on-site mixing and use.
HS Pro Latex Excel	<b>Premium SBR Based Polymer for Repair and Bonding</b> – displays good bonding with old to new concrete, bricks & stones. It increases the mechanical strength of mortar and hence prevents any cracks.
HS ProMicro Concrete	<b>Flowable non-shrink Concrete</b> – used for repairs to damaged reinforced concrete elements, particularly where access is restricted and where vibration of the placed material is difficult or impossible.



## Grouts

Grout materials for effective filling of gaps or to reinforce existing structures.

They can be employed in pressure grouting, embedding rebar in masonry walls, connecting sections of pre-cast concrete, filling voids etc.

HS-Super Grout	<b>Pumpable Non-Shrink Cementitious Grout</b> – a high precision, non-shrink packaged dry cement based flowable grout with two-stage expanding properties and select aggregates.
HS-Pro Grout - Epoxy	<b>3 Component Epoxy Grout for Vibratory / Heavy Equipment Bases</b> - a high performance Epoxy Grout designed for free flow grouting material for use in situations where heavy dynamic and mobile loads are encountered.
HS-Pro Grout - Epoxy Inj.	<b>2K Epoxy Injection Grout for Structural Strengthening</b> - a 100% reactive, 2 component Epoxy Injection Grout designed as a moisture insensitive adhesive for numerous injection and sealing needs.



## Sealants

Sealants with wide ranging properties in terms of strength, flexibility, appearance, permanence, solubility - effective in filling cracks & openings, sealing joints as well as providing a barrier against air, water, moisture, gas, noise, dust and smoke.

Brand Name	Product Profile
HS Pro Jointseal	<b>Gun Grade Polysulphide Sealant</b> – suitable for sealing joints in roads, subways, basements, retaining walls, reservoirs and brickwork joints.
	<b>Pouring Grade Polysulphide Sealant</b> – suitable for sealing joints in roads, subways, basements, retaining walls, reservoirs and brickwork joints.
	<b>PU Sealant</b> – single component, self levelling, moisture curing polyurethane sealant, specifically developed to be used as a multi-purpose joint sealant in applications where high chemical resistance to fuels, oils and hydrocarbons is required.



## Waterproofing

Waterproofing Compounds & Membranes form an impervious barrier to prevent water entering or escaping from various sections of building structures – whether they are walls, floors or roofs. Waterproofing enhances the longevity of concrete and masonry structures and protects against the high cost of repairs and maintenance.

HS Pro Cementmix	<b>Integral Liquid Waterproofing Admixture</b> – specially formulated additive composed of cement compatible, corrosion inhibitor, surface additive, polymers and other agents. It improves the integral waterproofing properties of cement concrete and plasters after curing.
HS Pro Cemshield WP	<b>Two component Polymer modified Cementitious Waterproof Slurry Mortar</b> – resistant to ingress of water, thus providing adequate waterproofing specially for water retaining surfaces.
HS Latex Plus	SBR Latex-Styrene-Butadene Latex based liquid for <b>Waterproofing and multi-purpose Repair Work</b> . It prevents cracking by improving flexural strength, and also reduces aging, drying and shrinkage cracks.
HS Polyshield Roofcoat	<b>PU Based Waterproofing</b> – one component, solvent free, cold applied Waterproofing Membrane. It complies with ASTM D6083 - 97a, and has high elasticity with elongation of 350% and crack bridging properties.
HS-Weathercoat Kool & Seal	Water based <b>Flexible Waterproofing Membrane</b> with heat reflecting particles – waterproof coating with 100% Acrylic Elastomeric Polymer with good crack bridging property. The heat reflecting particles present, reflects visible and infrared radiation, thereby reducing heat build-up and keeping the surface cool.
Quickseal MP 500	<b>Polyurea Coating</b> – a permanently flexible, seamless Waterproofing Solution for a wide range of substrates. Its rapid application and instant curing characteristics enable shorter shutdown times than traditional waterproofing products.







## Flooring

Resin Floors are ideal flooring solutions for both commercial and industrial environments. Applied over concrete floors, they bring aesthetics and longevity to hard-wearing floors. Resistant to water/moisture damage and dust being trapped, they are ideal as clean room floors. Resin Floors are used in a variety of industrial units including processing & manufacturing plants, commercial facilities, warehouses, pharmaceutical manufacturing, food and beverage plants, battery rooms, power points, refineries, laboratories etc.

Brand Name	Product Profile
	<b>EPOXY SELF LEVELLING</b>
<b>Pro Epishield SL Coating</b>	Solventless Epoxy Self Leveling Floor Topping for application at thickness ranging from 0.5 to 3.0 mm. A high performance glossy Top Coat reinforced with aggregates, available in assorted shades.
<b>Pro Epishield NE 100</b>	Chemical Resistant Epoxy Coating based on Epoxy Novolac Resin. A high performance clear glossy Top Coat for use as protection of chemical plant floors.
<b>Pro Epishield HVI Coating</b>	Dielectric Insulating Epoxy Flooring with break-down voltage resistance up to 44KVA. High Voltage Insulation coating reinforced with special fine aggregates, available in assorted shades for application on concrete floors.
<b>Pro Epishield ESD</b>	Solventless ESD Epoxy Flooring with surface resistance of $10^6$ to $10^9$ Ohms. High performance glossy Top Coat reinforced with aggregates.
<b>Pro Bepocem</b>	Epoxy Cementitious Underlay with Temporary Moisture Barrier Property.
	<b>EPOXY COATINGS</b>
<b>Pro Epishield Floor Sealer</b>	Non-fillerised Solventless Epoxy based Primer cum Sealer. With excellent penetration and concrete sealing properties, it acts as a bridge between substrate and Epoxy Screed and/or Top Coat.
<b>Pro Epishield FC 75 &amp; FC 150</b>	High Performance Epoxy Floor Coating suitable for brush and roller application. A coloured glossy Top Coat, with a smooth finish, possessing good chemical and mechanical properties.
<b>Pro Epishield Mark 100</b>	Glossy Floor Marking Coat for brush and roller application. With a smooth finish, it possess good chemical and mechanical properties.
	<b>POLYURETHANE CONCRETE</b>
<b>Pro Polyshield Concrete</b>	Self leveling high performance Polyurethane Concrete Coat - for thermal shock resistance and high impact. With chemical resistance ideal for floors in Chemical Plants.
	<b>FLOOR HARDENER</b>
<b>Pro Tuff Floor NM</b>	Non Metallic Floor Hardener - Pre blended, mineral dry shake hardener for hard-wearing topping for monolithic floor.
	<b>POLYURETHANE COATINGS</b>
<b>Pro Polyshield FC 150</b>	Aromatic Polyurethane Floor Coating possessing good chemical and mechanical properties. A coloured glossy Top Coat suitable for brush and roller application.
<b>Pro Polyshield UV 75</b>	Aliphatic Polyurethane Floor Coating with excellent UV stability.
<b>Aqugreen WB PU FIN</b>	Water borne Polyurethane Finish for concrete and masonry surfaces. A hygenic wall coating with antifungal and antibacterial characteristics that has excellent weather resistance properties. The coating is washable with water.





- Distinct Leader in Protective Coatings in India**
- 2nd largest paint company in India**
- 4th largest paint company in Asia**
- 14th largest paint company in the world**
- 16 Manufacturing Plants in India**
- 167+ Stock Points in India**

ISO 9001 : 2015 | ISO 14001 : 2015 | ISI 45001 : 2018



**BERGER PAINTS INDIA LIMITED**  
 Berger House, 129 Park Street, Kolkata 700 017  
 Phone : (033) 2229 9724 (5 lines) 2229 6005 / 06 / 16  
 Fax : (033) 2249 9009 / 9729  
 <protectonhelpdesk@bergerindia.com>  
 <[www.bergerpaints.com](http://www.bergerpaints.com)>

### Recognised & Feted by the World

- Ranked 14th globally among Manufacturers of Paints & Coatings according to a report in Coatings World 2018
- Ranked 99 in BT 500 – India’s Most Valuable Companies, 2017
- Consistently on the Milward Brown BRANDZ Top 50 Indian brands list since 2014
- Listed in Forbes India Super 50 Companies since 2015
- Won Greentech Environment Award 2018
- Awarded Green Products and Services Certification by CII
- Gold Award bagged by our Naltali Unit in National Occupational Health & Safety Awards 2020
- CII Environmental Best Practices Award 2020
- Berger Paints India recognised as the ‘Best Indian Paint Company’ at Times Business Awards
- National Award for Energy Conservation 2019
- Berger Express Painting Awarded SKOCH-BSE Order of Merit in the Innovation category at the 48th SKOCH-BSE Summit
- Business Today ranks Mr. Abhijit Roy, MD & CEO, Berger Paints India, in its 100 Best CEOs in India
- 10th Annual Construction World Global Awards 2012
- Builder Information Bureau (BIB) 2012 Leadership in the paint category
- Best Supplier Award for Outstanding Contribution in Product Development OEM customers M/s Whirlpool – 2005, Faridabad
- Fastest Growing Paint Company – Construction World NICMAR Award